

Southern Europe: economic growth factors and tools in support of regional policies

Prague, 03/6/2009



EUROPEAN UNION
Part-financed by the European Regional Development Fund
INVESTING IN YOUR FUTURE

IMPACT OF THE CRISIS

Financial crisis (global) + Construction industry crisis (local)



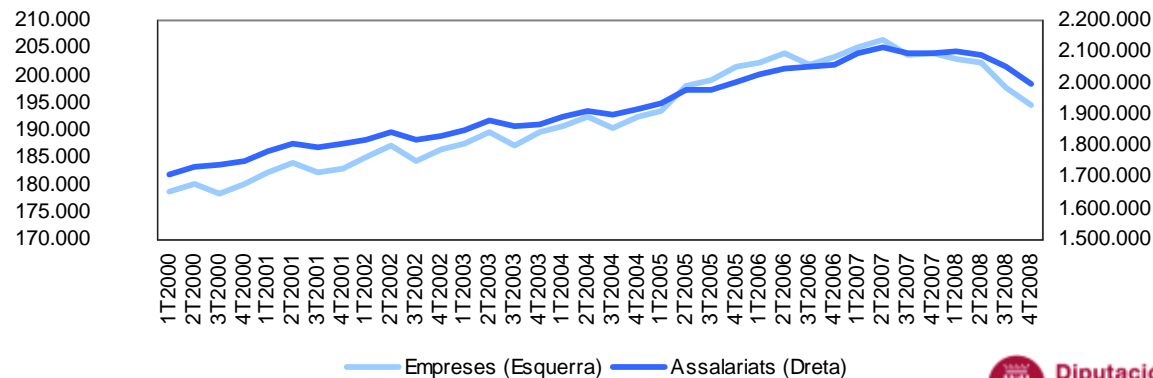
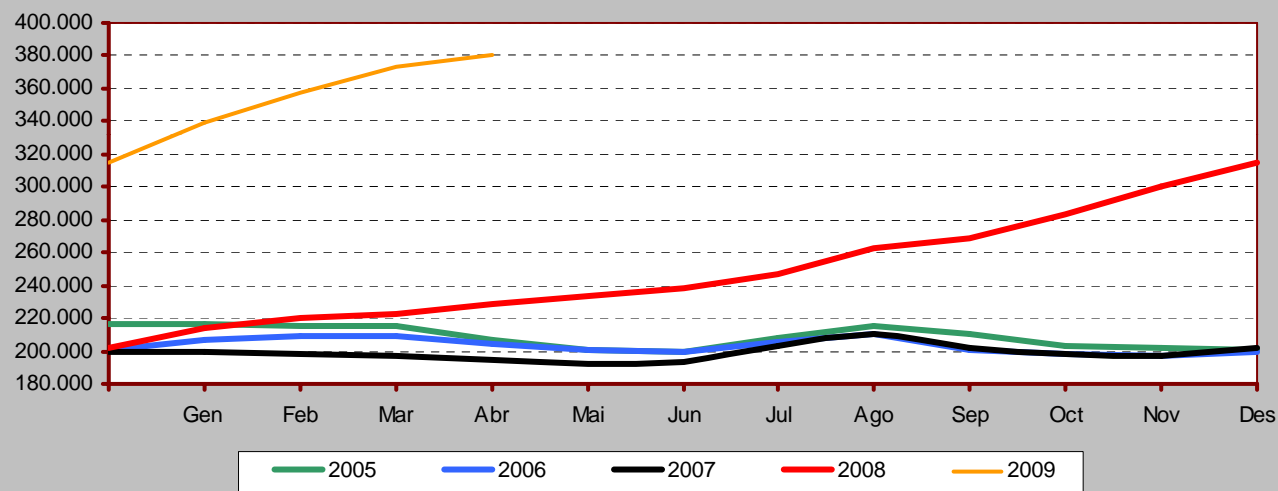
Some comparative figures (April'07-April'09)

- Unemployment up **96%** (+186.000)
- Unemployment rate up from **6.9%** to **13.2%**
- Unemployment in the construction industry up **+257%**
- Unemployment rate in the construction industry up from **8%** to **14%** of total
- Salaried employment down **4.7%** (-98,000)
(December'07-December'08)
- Number of companies down **4.7%** (-9,500)
(December'07-December'08)

IMPACT OF THE CRISIS

Graphs

Comparació de l'evolució mensual de la desocupació.
2005-2009



LOCAL SCALE

Local scale as a sphere in which to design and apply policies to influence economic development

Diputació de Barcelona



Economic Development Agencies



Implementing **territorial models**

LOCAL SCALE

Amongst other things, Agencies:

- Carry out regional observation and planning
- Foster strategic thinking
- Lead and develop strategic projects
- Promote business innovation and competitiveness (both in cutting-edge and labour-intensive sectors, i.e. tourism, textiles, metalwork, etc.)
- Encourage the entrepreneurial spirit and the creation and consolidation of businesses

LOCAL SCALE

- Business search
- Attract and retain talent
- Closer links between vocational training and job market
- Inter-institutional lobbying
- Creation of alliances and partnerships
- Local identity and image (city marketing)

MEASURES TAKEN BY DIPUTACIÓ DE BARCELONA AGAINST THE CRISIS

EU

State Government

Government of Catalonia

Diputació de Barcelona



12 measures :

Generate new jobs

Alleviate effects of crisis
on families

Help local authorities to
finance spending on social
welfare policies

MEASURES TAKEN BY DIPUTACIÓ DE BARCELONA AGAINST THE CRISIS

Examples:

- Measure 3. Increase the impact of job creation and absorption of unemployed people into personal care service sector
- Measure 4. Programme to strengthen local employment services
- Measure 5. Networks of agents to foster quality local tourism industry

THANK YOU VERY MUCH!

Diputació de Barcelona

Technical Office for Economic Development Strategies
Directorate for Studies and Prospective Research

herrerocm@diba.cat

canalsmjs@diba.cat