



Co-financed by the European Regional Development Fund

Inspire Policy Making with Territorial Evidence

# New challenges and thinking for spatial planning

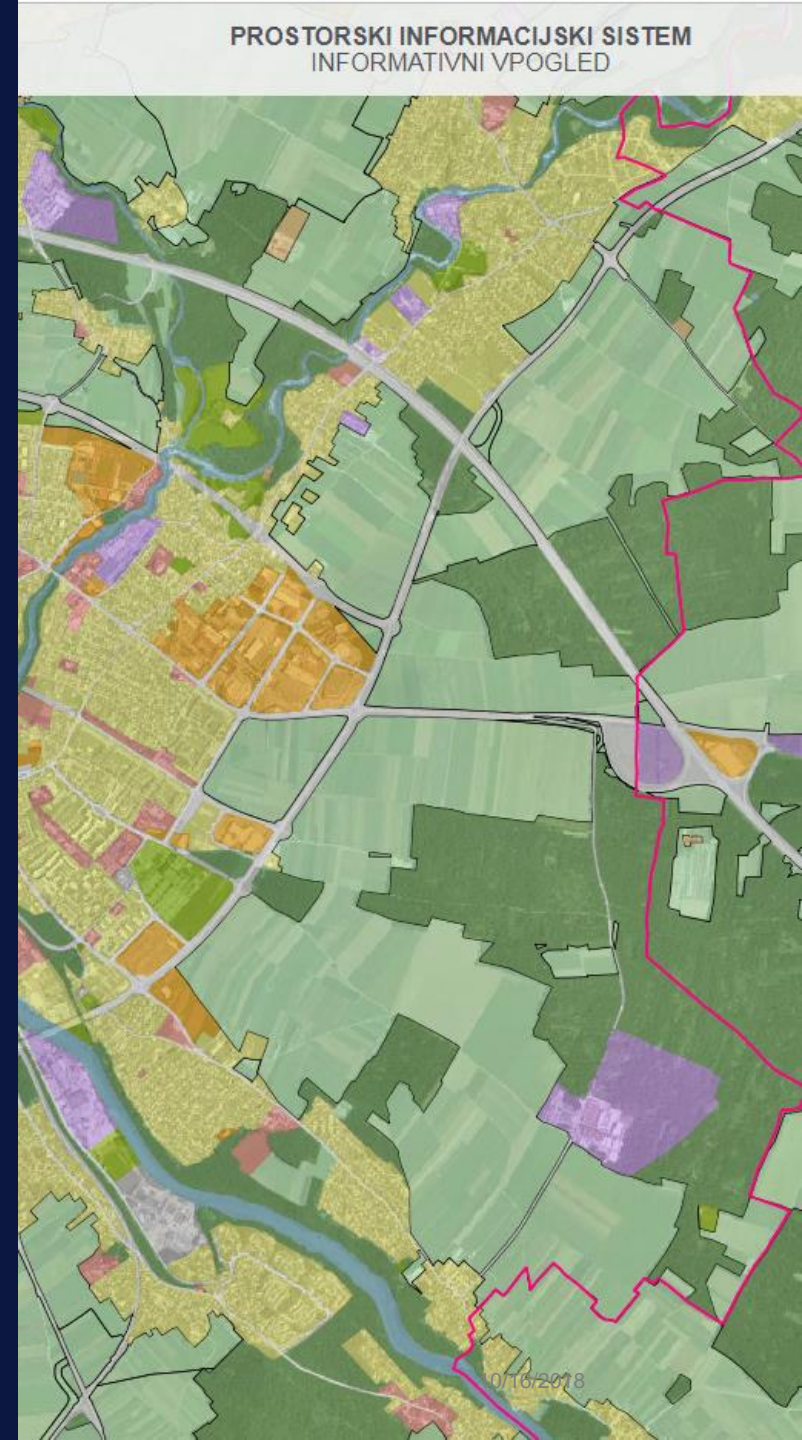
Slovenia – decades of transition

Tomaž Miklavčič  
ESPON contact point

- 1 National spatial planning system – the legal framework
- 2 Preparation of national spatial policy – participation and building of ownership
- 3 Reinventing a territorial level
- 4 Critical challenges

1

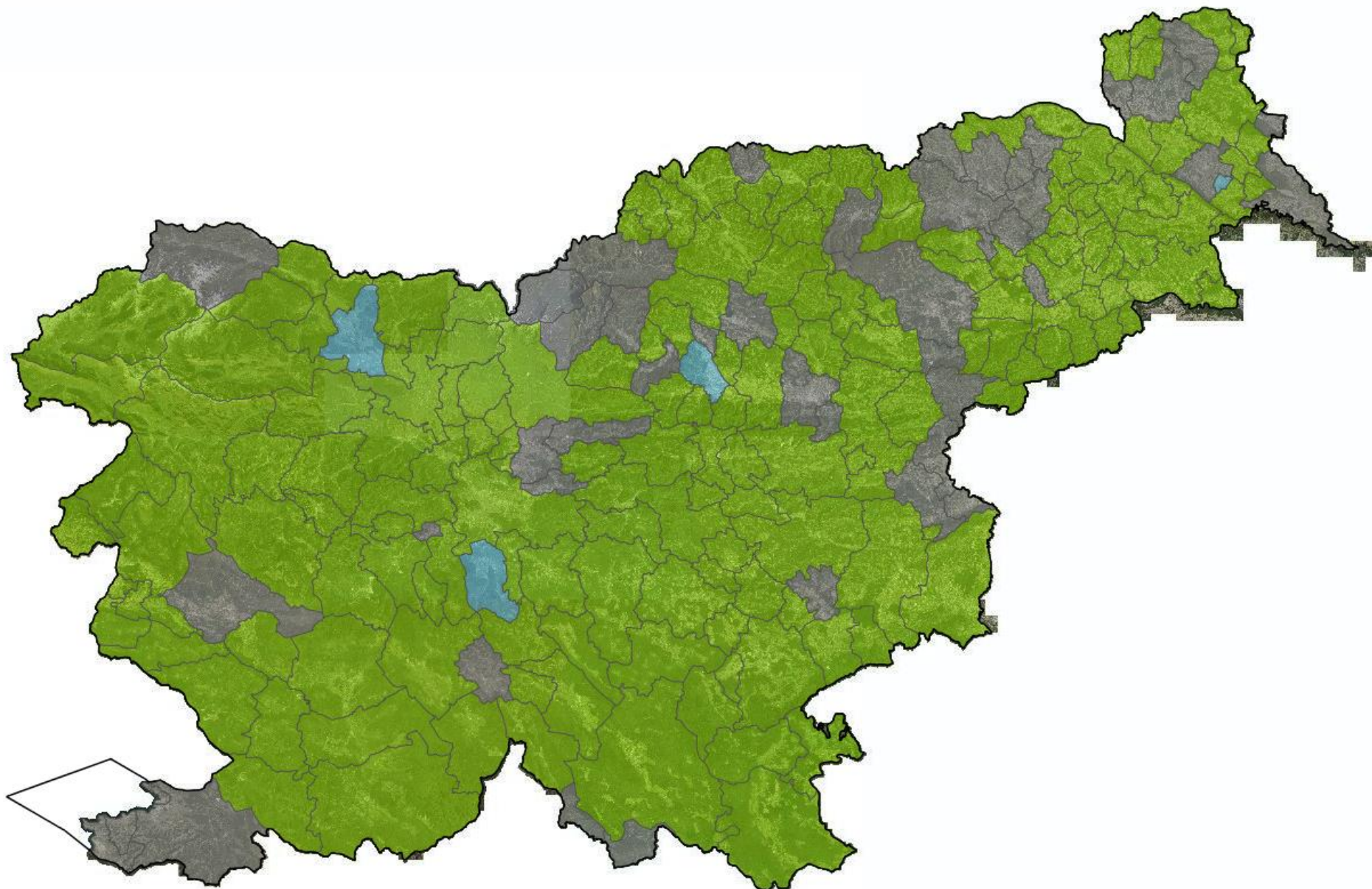
# National spatial planning system – the legal framework



# Changing legal framework

- Spatial Planning Act (1984)
- 1980s - Societal planning system: spatial/territorial, social and economic part
  - Long- and mid-term National Spatial Plan
- 1990s - disintegration of the societal planning system – spatial plans remained, without social and economic part
- 2002 - Spatial Management Act - 1 (national, regional and municipal territorial level)
- 2004 - adoption of the Spatial Development Strategy of Slovenia
- Preparation of regional spatial plans started
- 2007 Spatial Planning Act
- 2017 Spatial Management Act - 2





# Rationaile for latest legislative changes (2017)

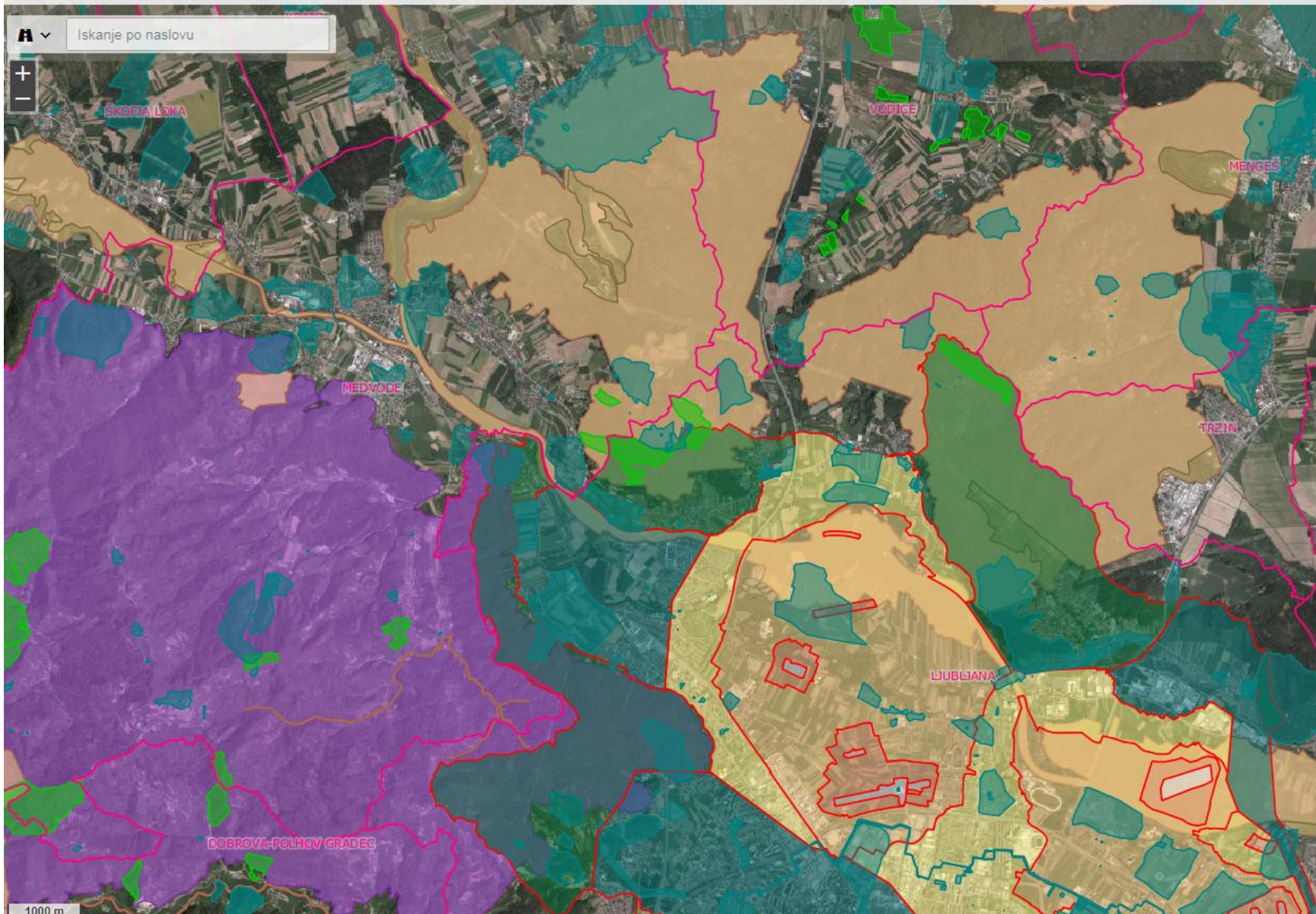
- revision of the strategic priorities of spatial policy;
- alignments of public-law regimes (heritage, flooding, land protection ...);
- improvement of the process of harmonization of various sectoral interests;
- the introduction and strengthening of the principles of regionalism in spatial planning through the integration of spatial and developmental planning;
- unification of the minimum requirements for spatial planning for the whole country;
- integration of spatial planning and permitting processes with environmental assessment procedures;
- standardization of public participation standards in the spatial planning process at all territorial levels;
- renovation of spatial measures and introduction of active land policy mechanisms; ...





A

Iskanje po naslovu



Osnovni sloji

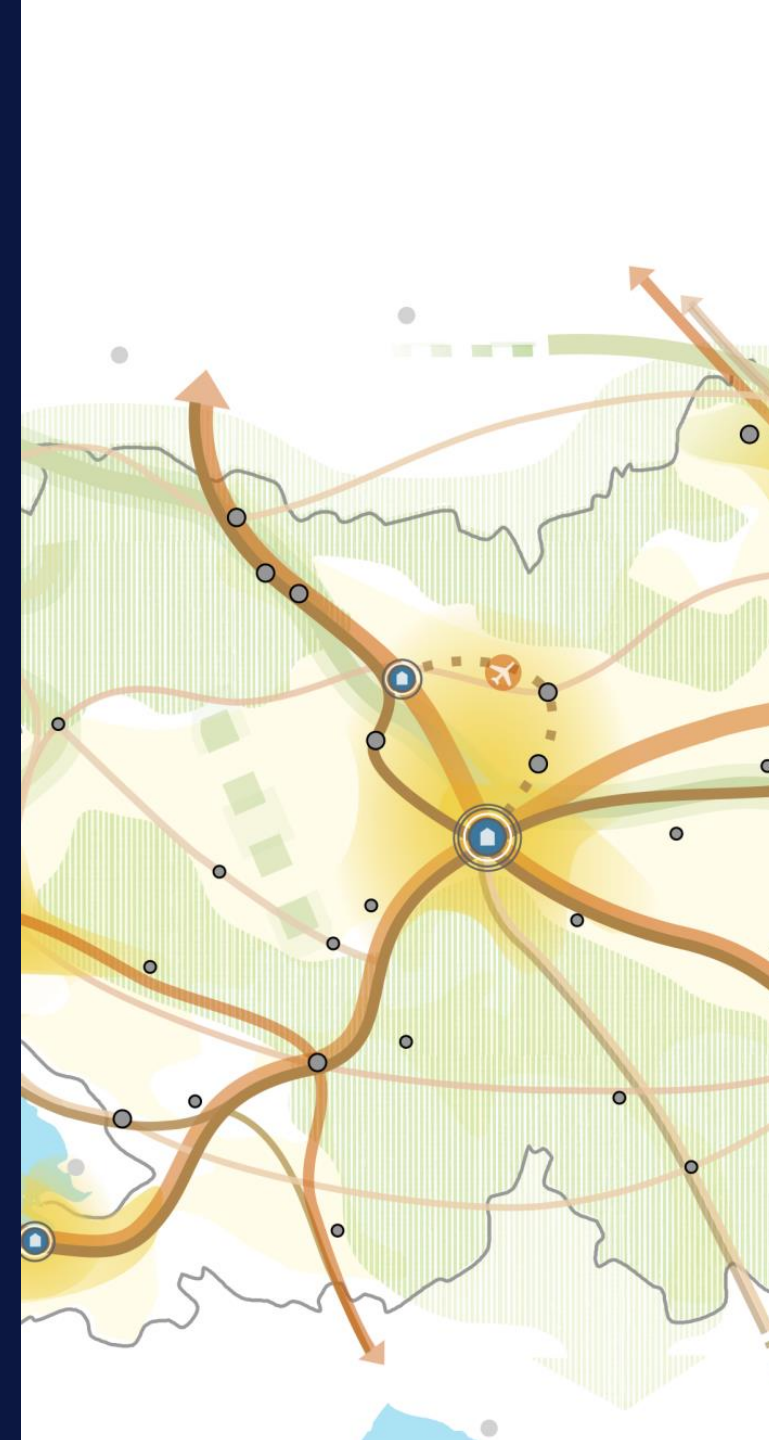
- >  Občinski prostorski akti
- >  Državni prostorski akti
- >  Upravni akti
- ▼  Omejitve v prostoru
  - ≡ Natura 2000
  - ≡ Zavarovana območja
  - ≡ Ekološko pomembna območja
  - ≡ Vodovarstvena območja
  - ≡ Gozdni rezervati
  - ≡ Varovalni gozdovi
  - ≡ Varstvo kulturne dediščine
- >  Nepremičninske evidence

12

Alina taborniki  
16:00 – 17:00  
[calendar.google.com](https://calendar.google.com)

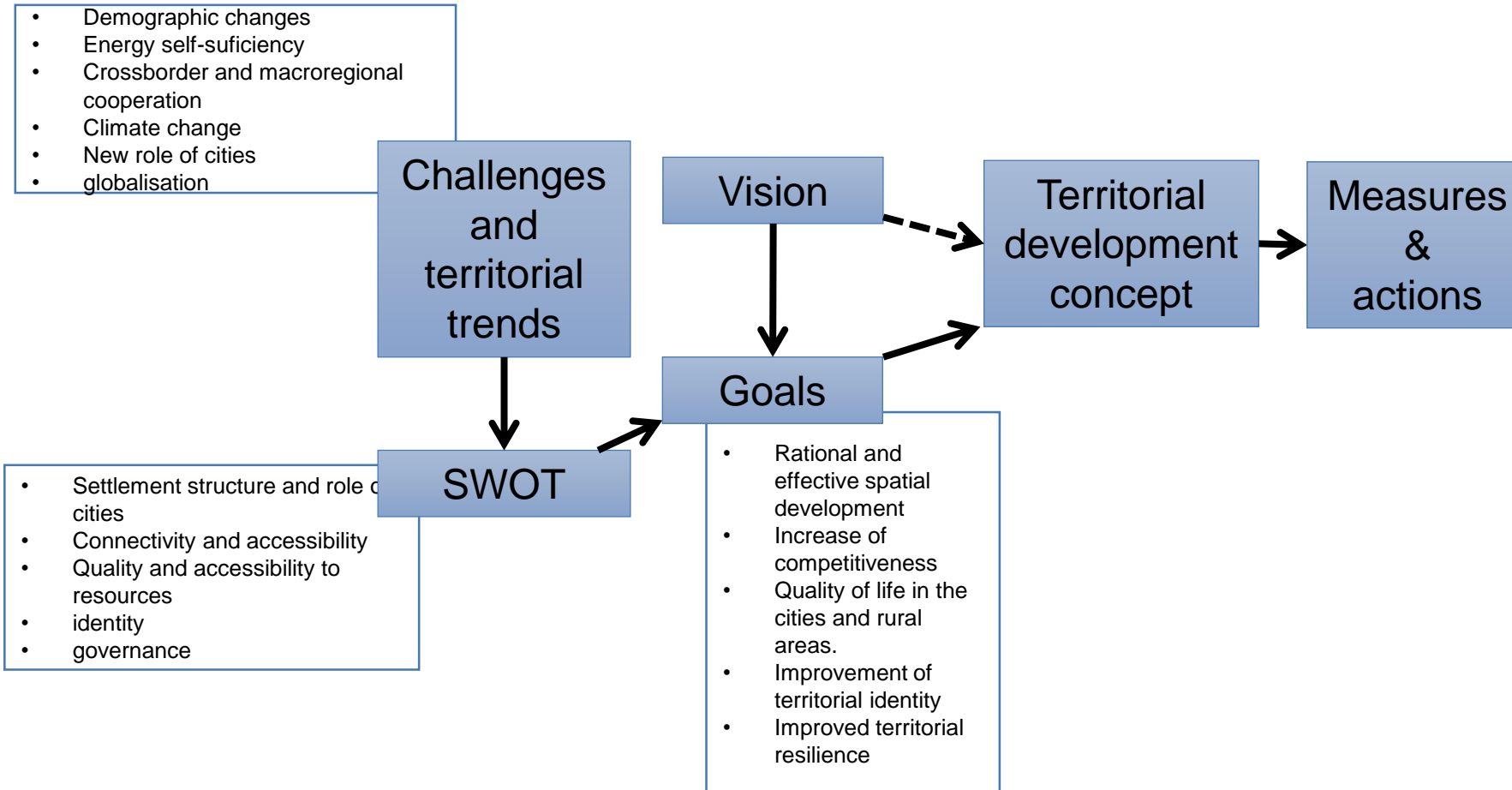
# 2

## Preparation of national spatial policy – participation and building of ownership



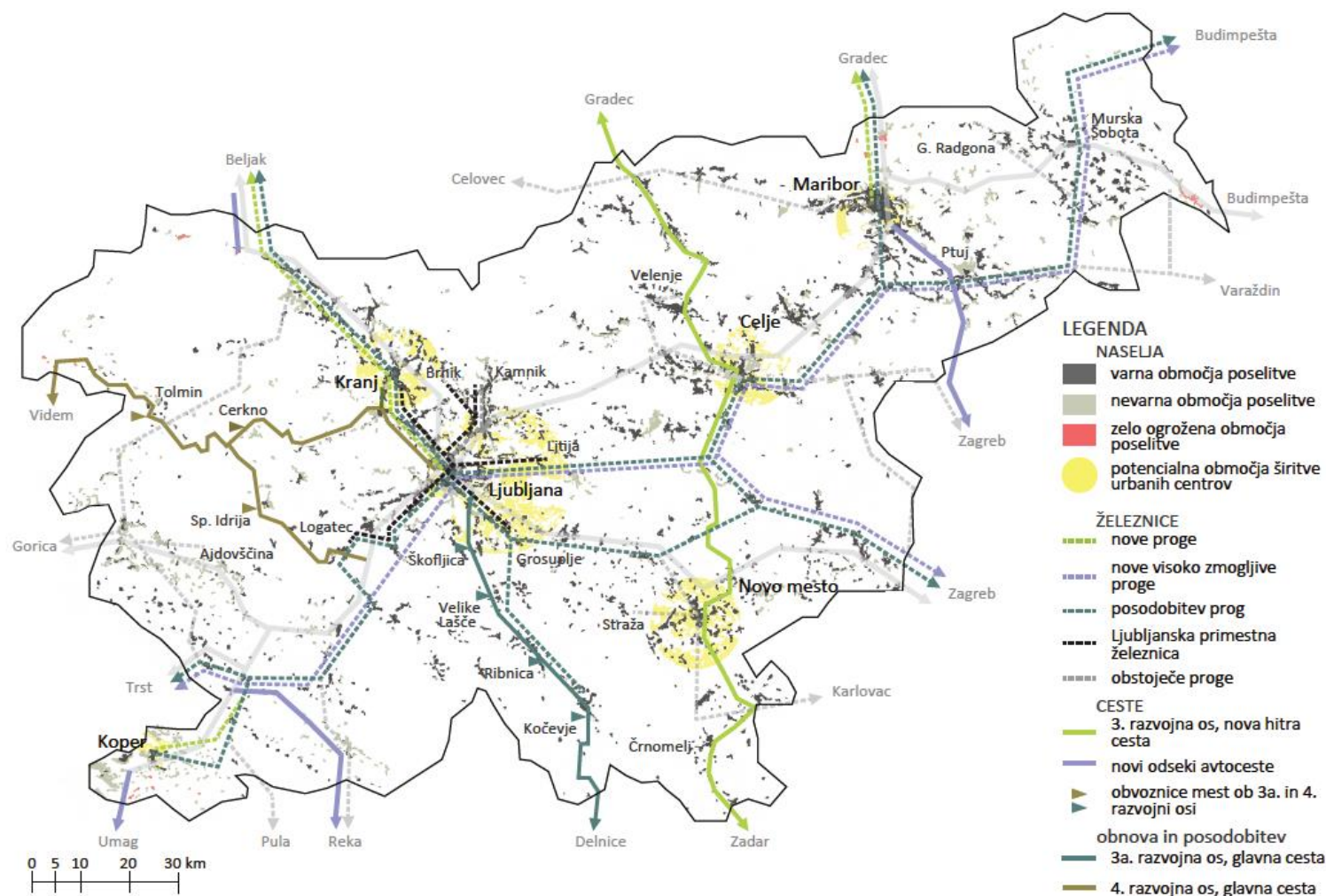


# Spatial development strategy



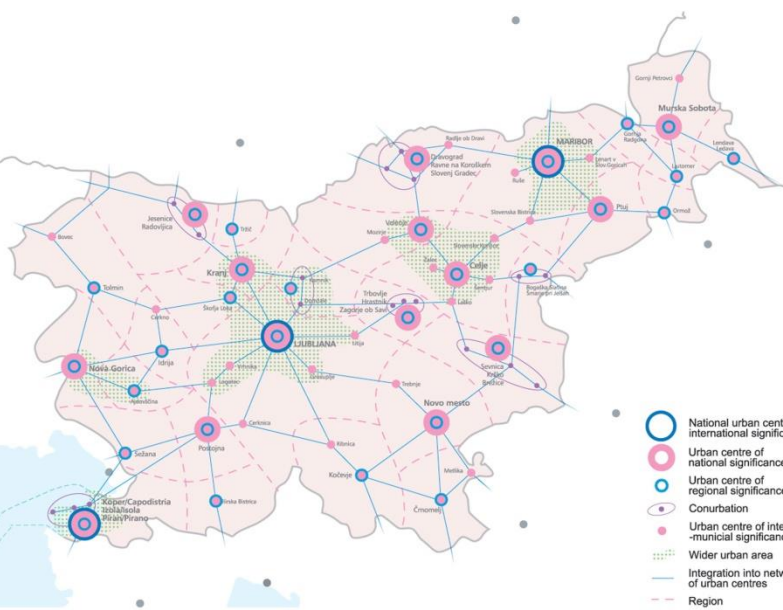
# Vision and goals

- Expert input
- Workshops and public events
- Student seminars

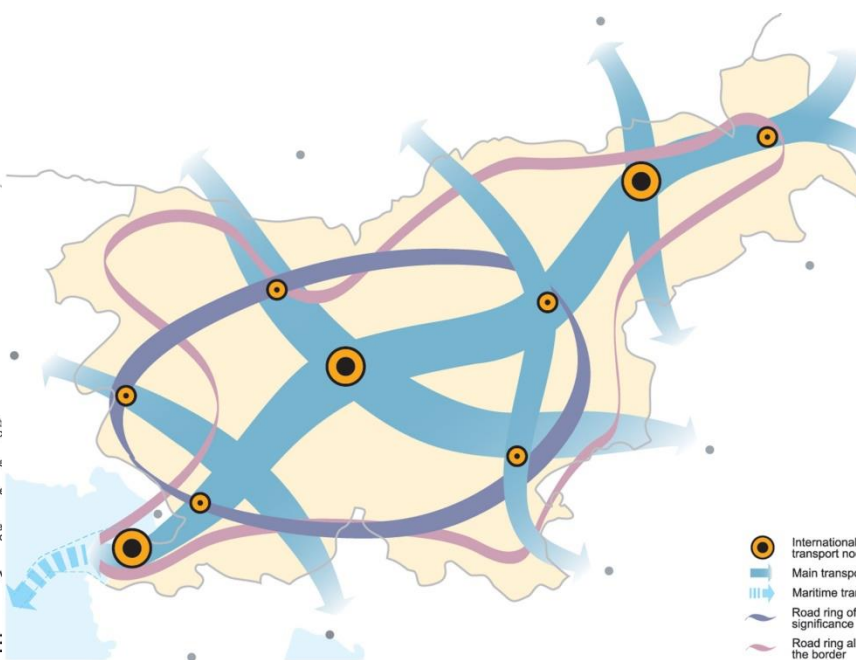


Karta naselij in prometnih povezav leta 2050

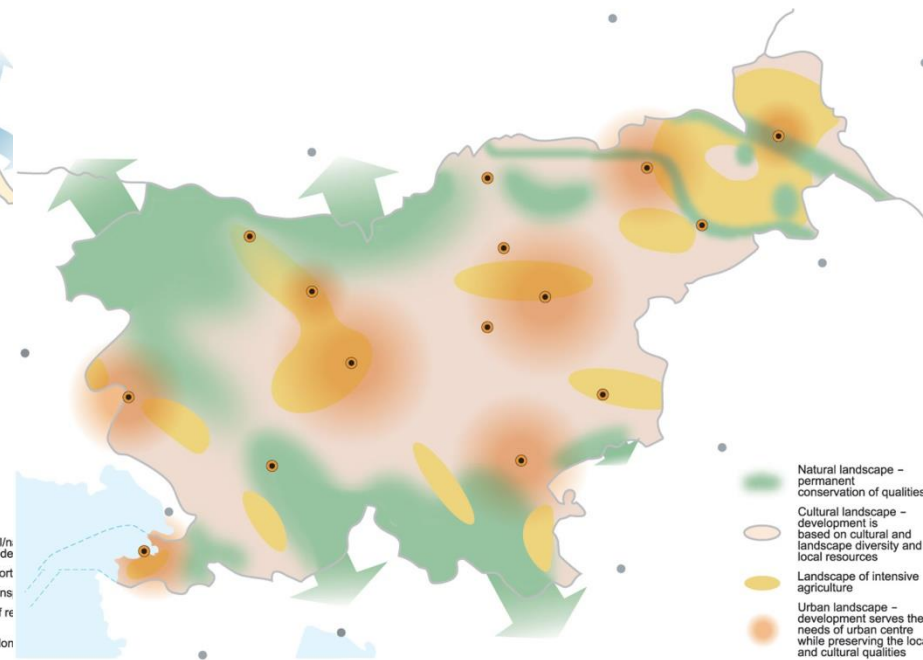
# Overcoming „sectorial“ approach



Map No 4 POLYCENTRIC URBAN SYSTEM AND DEVELOPMENT (WIDER URBAN AREA)



Map No 5 CONCEPT OF TRANSPORT NETWORK



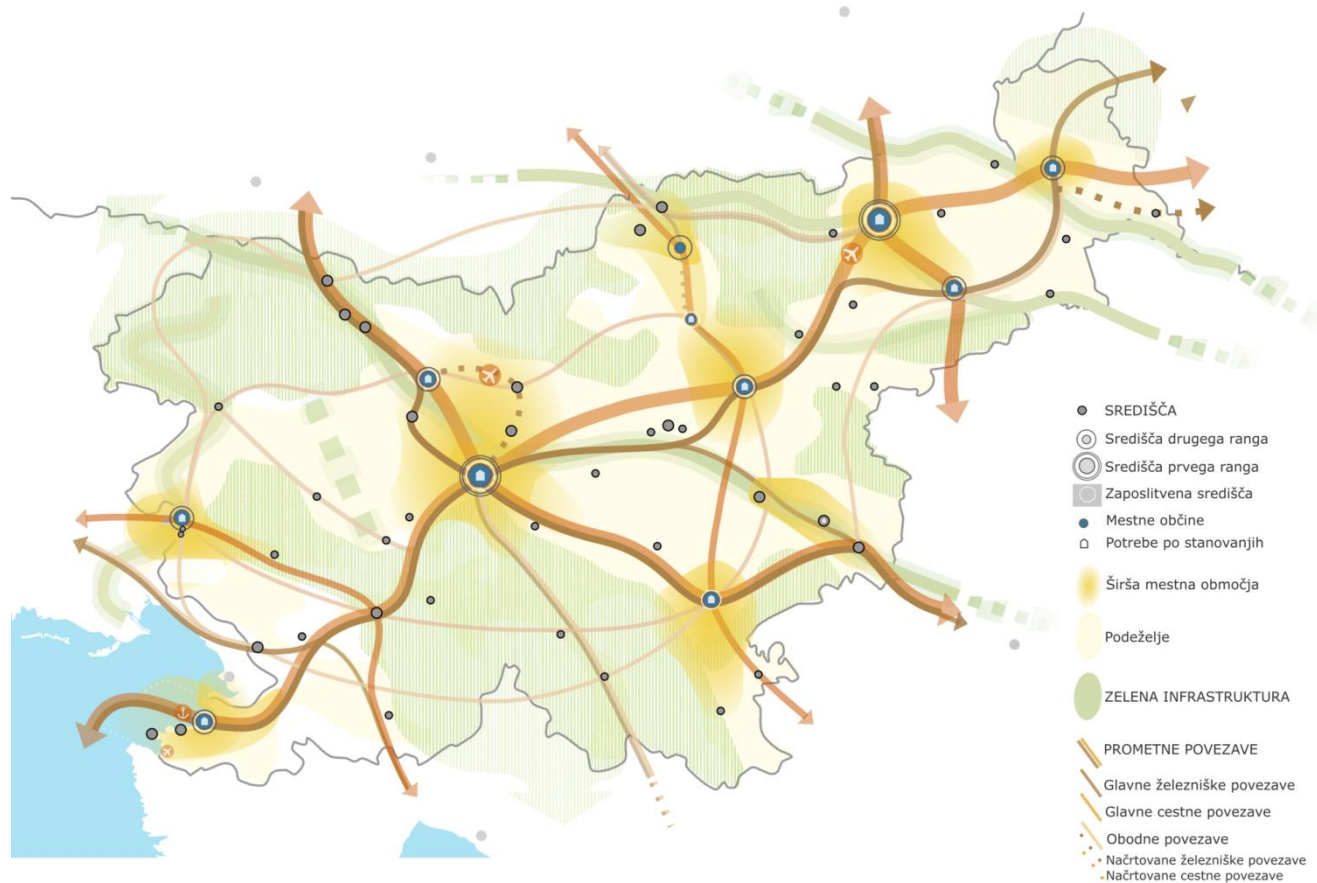
Map No 6 LANDSCAPE CONCEPT

The sea border between the Republic of Slovenia (RS) and the Republic of Croatia (RC) assumed from the Treaty on the Common State Border between the RS and the RC (Annex 1) approved by both governments on 19 July 2001, and installed by the heads of negotiating groups on 20 July 2001

The sea border between the Republic of Slovenia (RS) and the Republic of Croatia (RC) assumed from the Treaty on the Common State Border between the RS and the RC (Annex 1) approved by both governments on 19 July 2001, and installed by the heads of negotiating groups on 20 July 2001

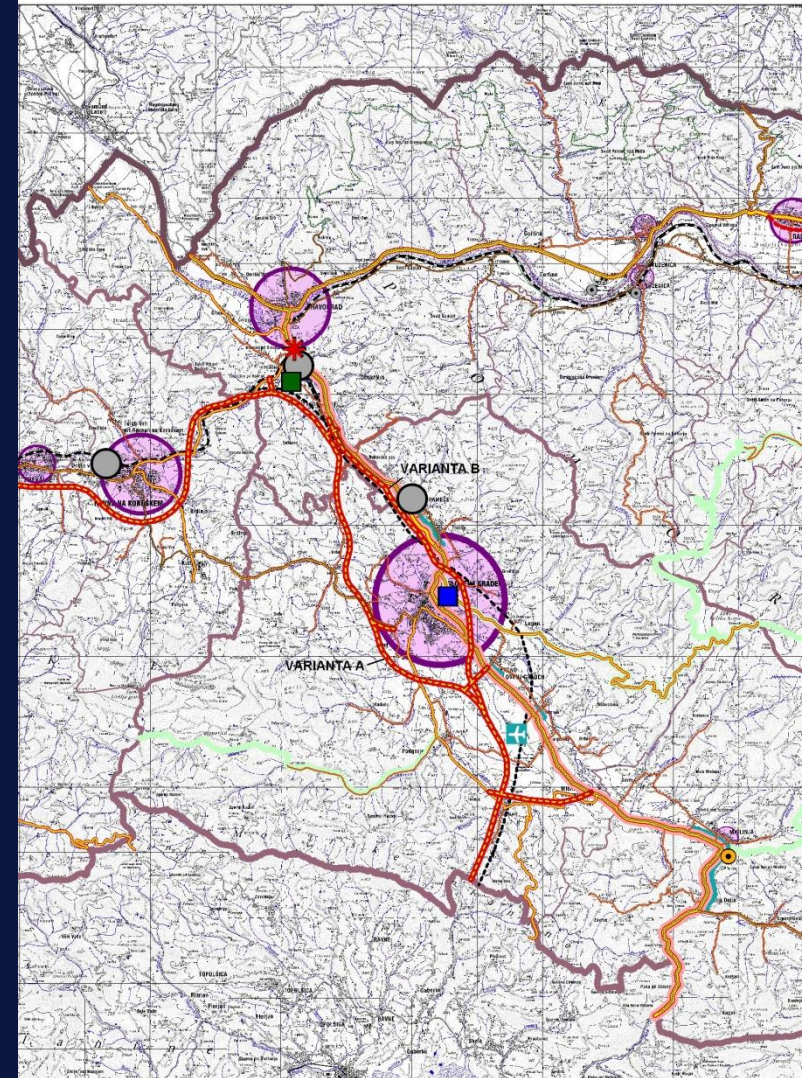


# Designing a common concept



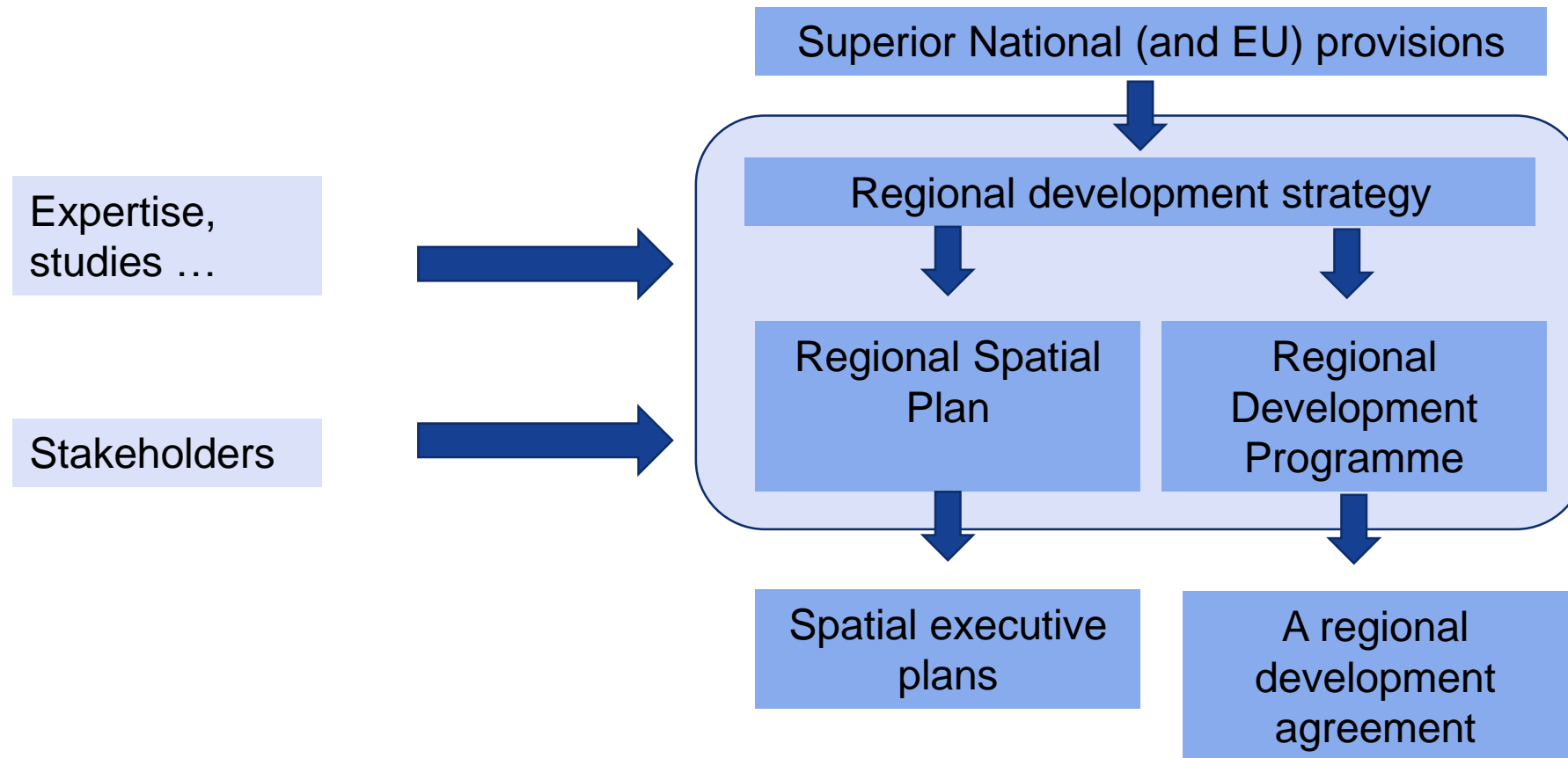
# 3

## Reinventing a territorial level



uktura			
avna cesta	PLAN	STANJE	glavna proga I. reda
gionalna cesta			glavna proga II. reda
kalna cesta			regionalna proga
tra cesta - v proučevanju			glavna proga II. reda - v proučevanju
avna cesta prekate gorizbrano regionalno			
esna obvoznica - proučevanju			
konstrukcija ceste			
lesarska pot			
ristična cesta			
		PLAN	terminal kombiniranega tovornega prometa nacionalnega pomena
			terminal JPP nacionalnega pomena
			javno letališče nacionalnega pomena in letališči za notranji zračni promet
			uređilne križišča
			parkirišče za tovorna vozila izven gospodarske cone

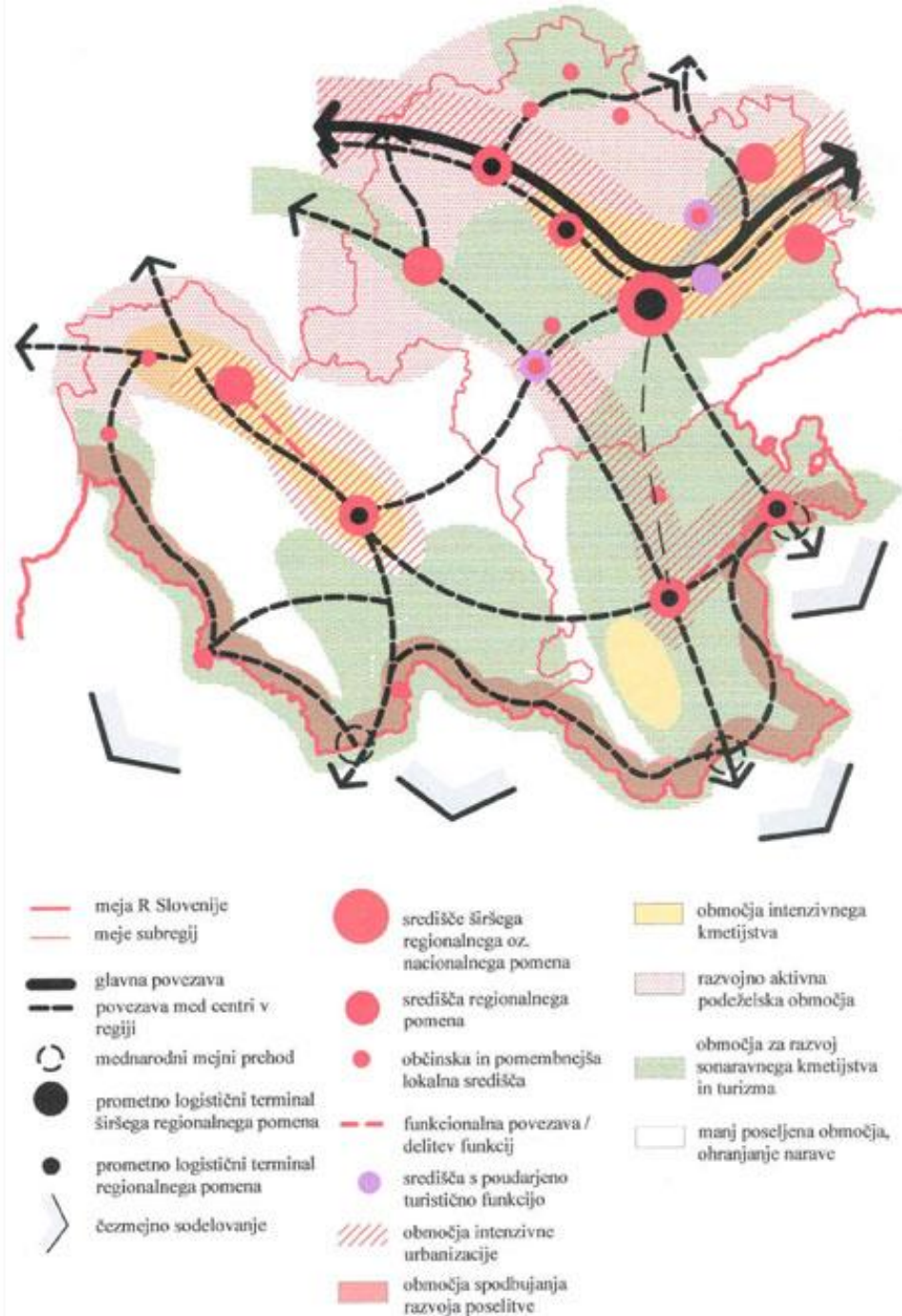
# Linking of spatial and regional policy





# Regional Spatial plan -general content

- Regional spatial development goals and objectives
- Functional urban areas
- Social infrastructure network
- Infrastructure network (transport infrastructure, economic zones ...)
- Housing development areas
- Regional green infrastructure
- ...



4

## Critical challenges



# Changing the role of Spatial planning

- Designing and moderating a process vs. Designing a plan
- Overcoming of sectoral planning by improving a dialogue and capacity building
- More participation less information
- Informatisation of spatial planning (e-plan, e permit, e- participation)



// Thank you

tomaz.miklavcic1@gov.si

This presentation will be made available at: [www.espon.eu/xxx](http://www.espon.eu/xxx)