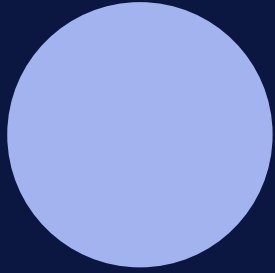


// Alps 2050



Alps 2050

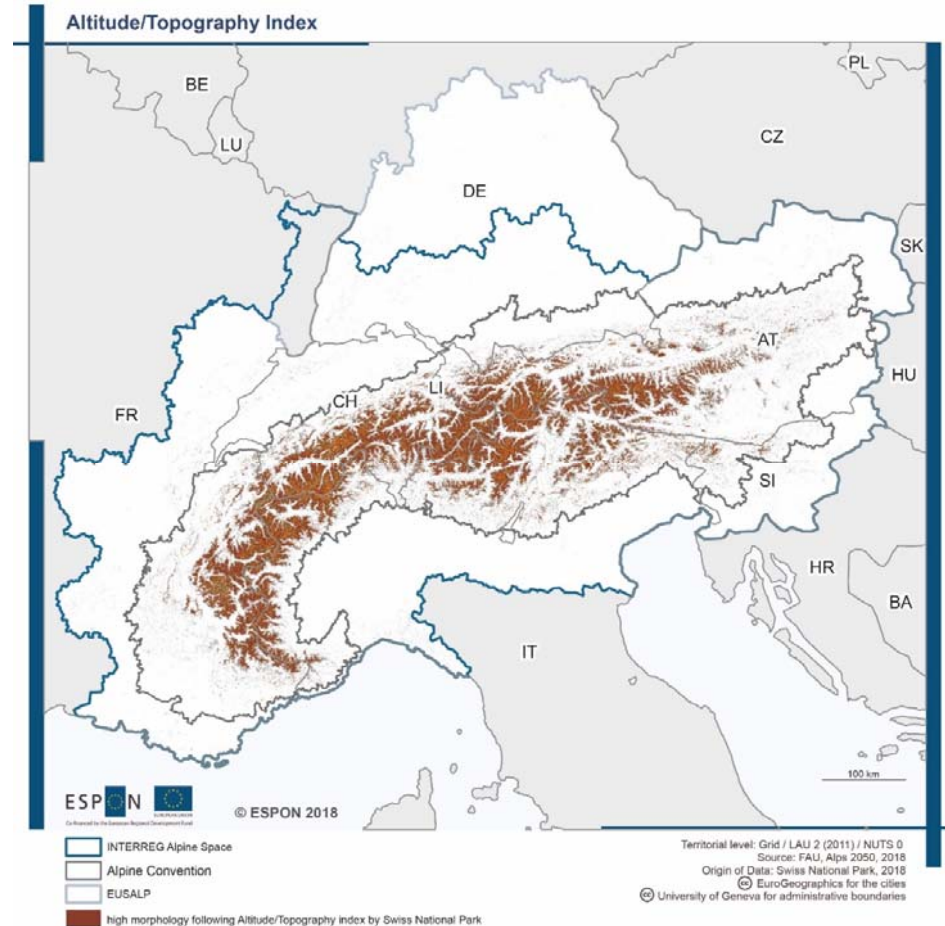
Common spatial perspectives for the Alpine area.

Towards a common vision

The project

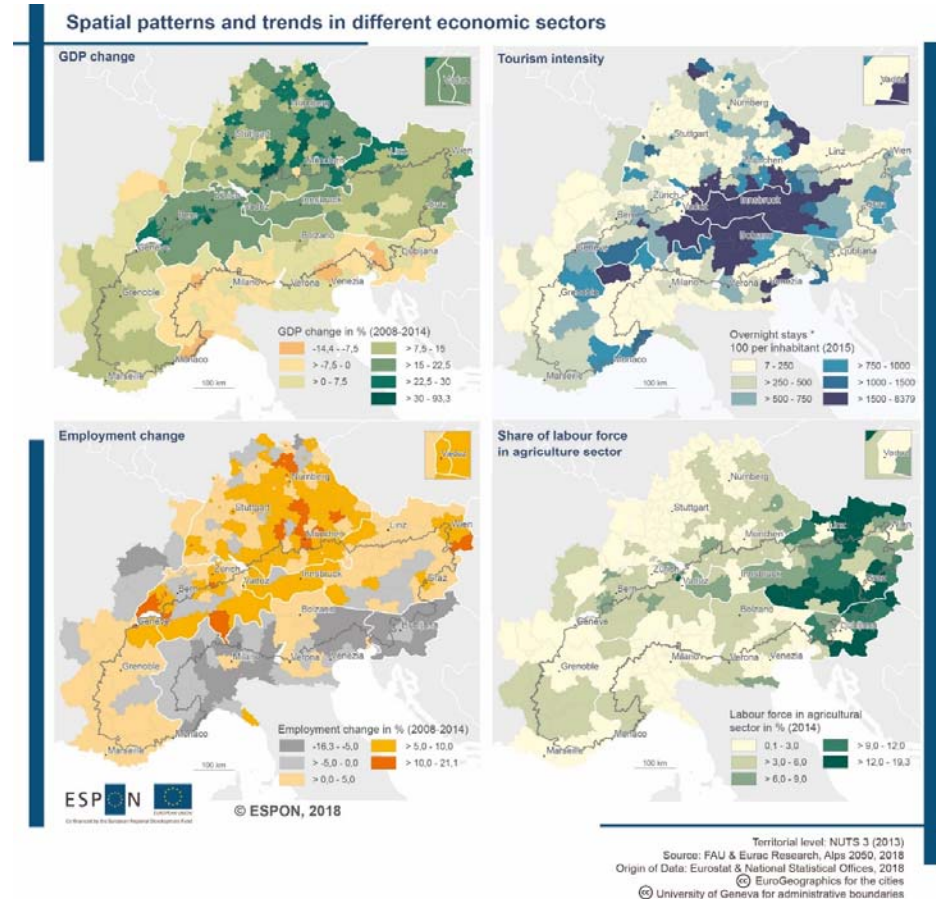
Main objectives:

- A territorial **vision** and common spatial perspectives for the Alpine area until 2050.
- Effective solutions for a balanced **sustainable development** as well as help to strengthen informal and formal **cooperation** between actors
- **Guidelines** for the development of spatial perspectives and a spatial vision on the transnational level



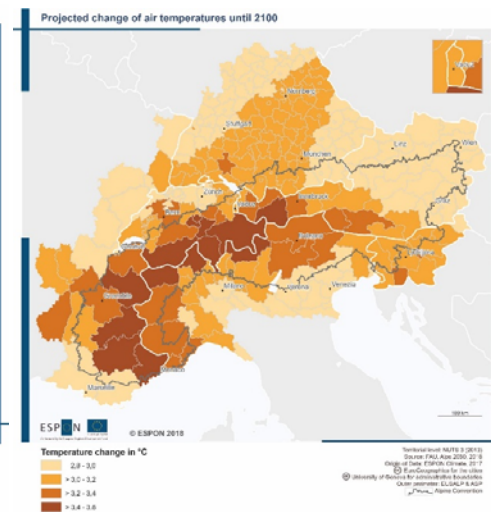
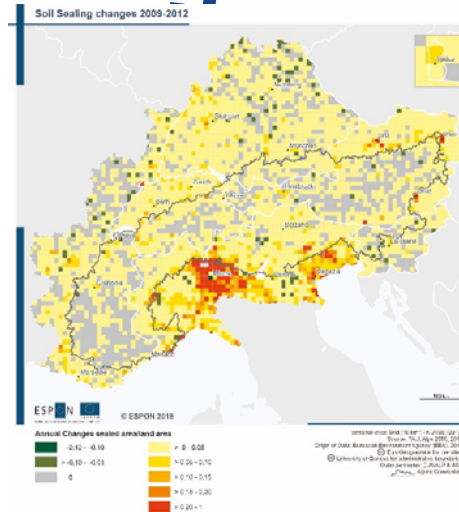
Complexity

- The territorial analyses display very diverse patterns and sectoral complexity
 - Left hand side, spatial patterns of a **North-South divide**: the trends in employment and in GDP (economic strength)
 - The map on tourism intensity based on overnight stays (upper right hand side): '**central-peripheral pattern**'
 - **East-West gradient** for the share of labour in the agricultural sector

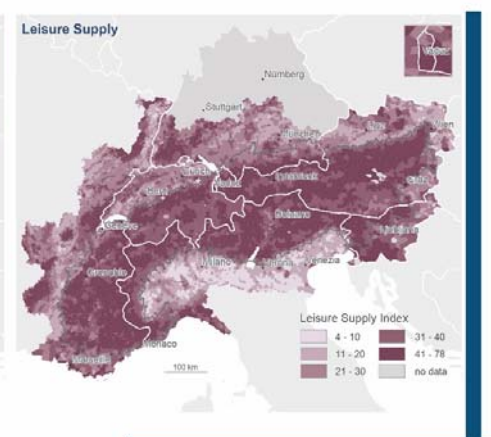
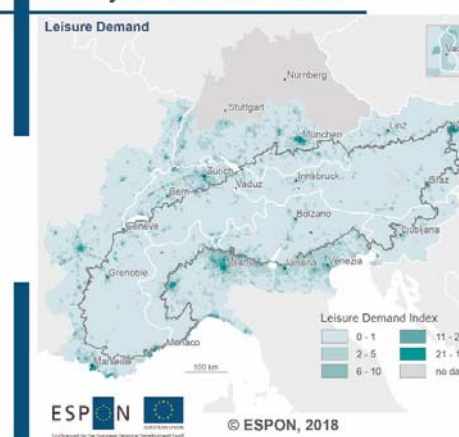


Sustainability challenges

- The project reveals considerable challenges to sustainable development
 - Climate change is already a severe threat – calling for climate change adaption measures like disaster risk management, touristic adaption strategies, new energy concepts etc.
- Soil sealing is a steady process affecting almost all municipalities. The omnipresence of the trend makes it an important topic
- The eco-system service of drinking water is an example of spatial interdependencies where dynamics pose challenges

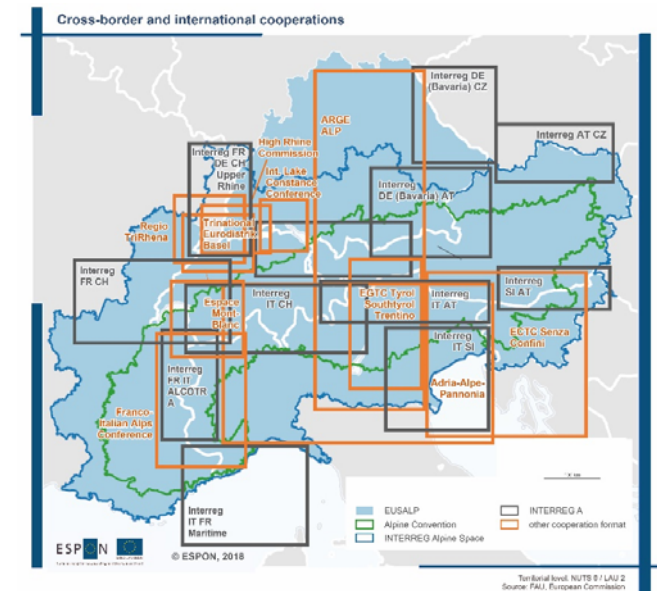
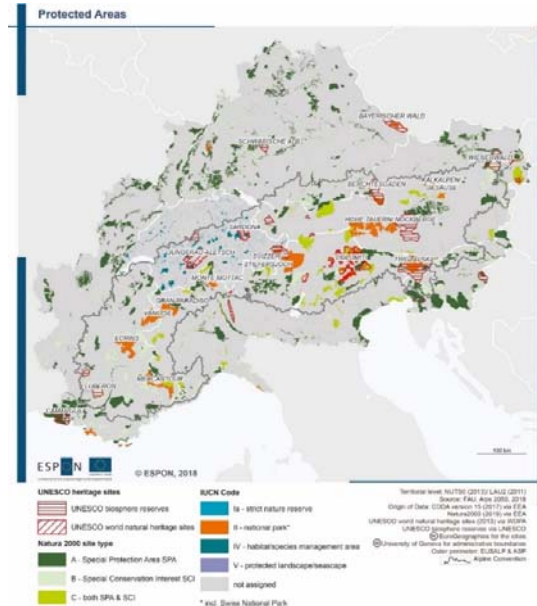
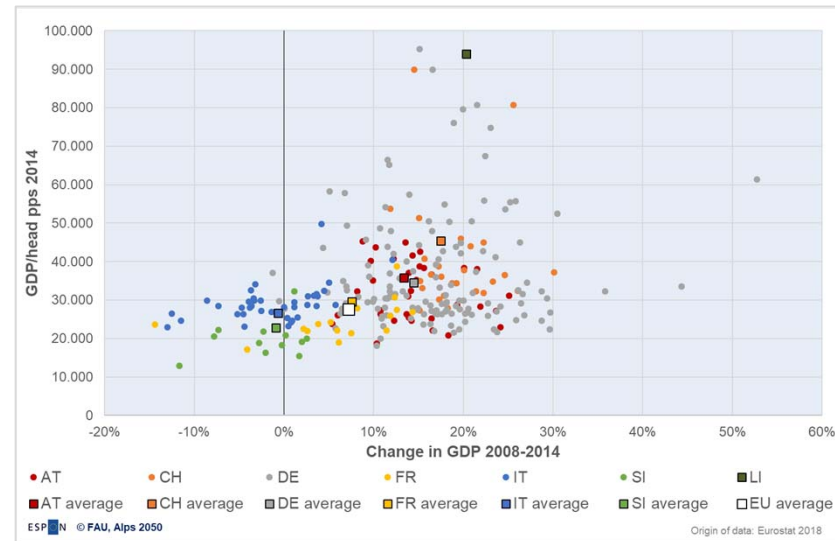


Eco-system services - leisure



Fragmentation

- Several results reveal territorial fragmentations, e.g.
 - Belonging to a specific nation-state determines the **economic level and development** to a high extent (upper figure)
 - The overview of the main existing **protected areas** reveals clear differences between national protection regimes and few cross-border formats (left)
 - A high number of cross-border and transnational cooperation formats aims to address the challenges



Scenarios and Perspectives

- The **overview** shows important elements of the reflection of the future development towards 2050
- **Scenarios** express different general priorities and reflect the participatory input
- Technique of **contrast scenarios** highlights underlying political process
- **Perspectives** concretise the scenarios in a more sectoral manner

Perspectives

People and territories

Economy

Environment

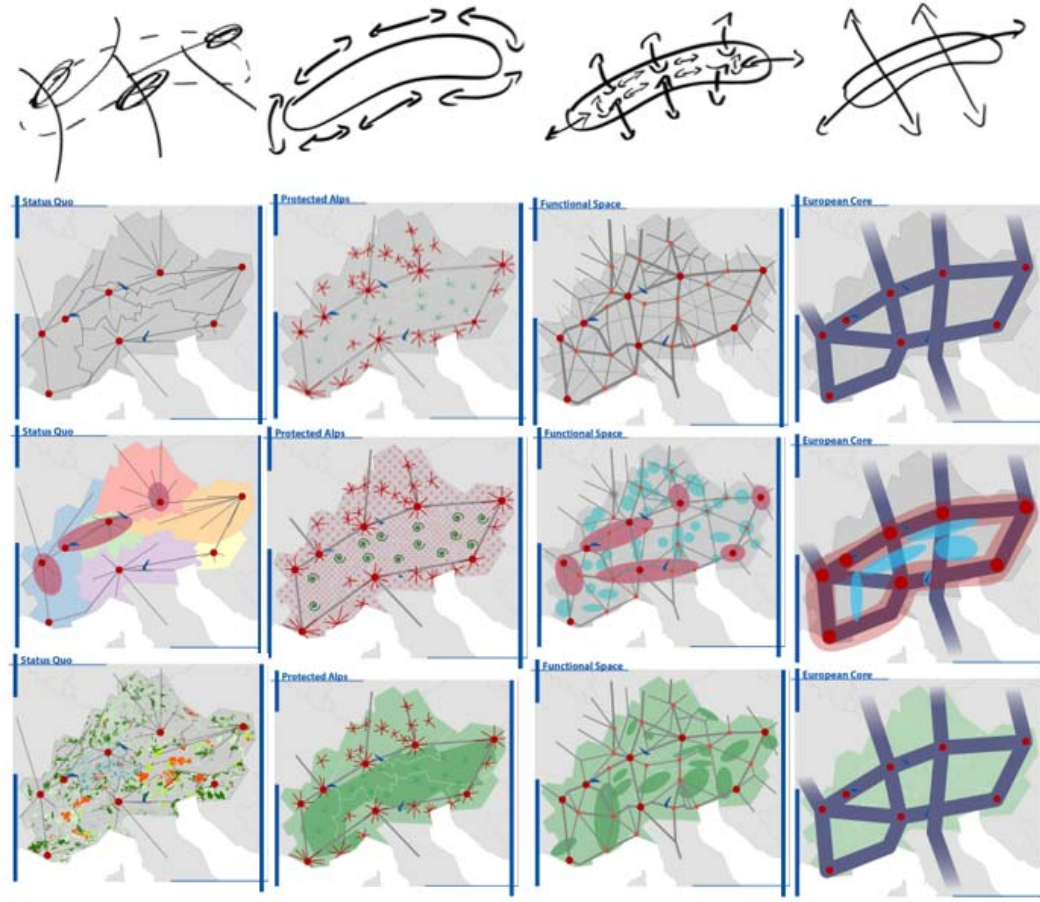
Scenarios

Status quo

Protected Alps

Functional space

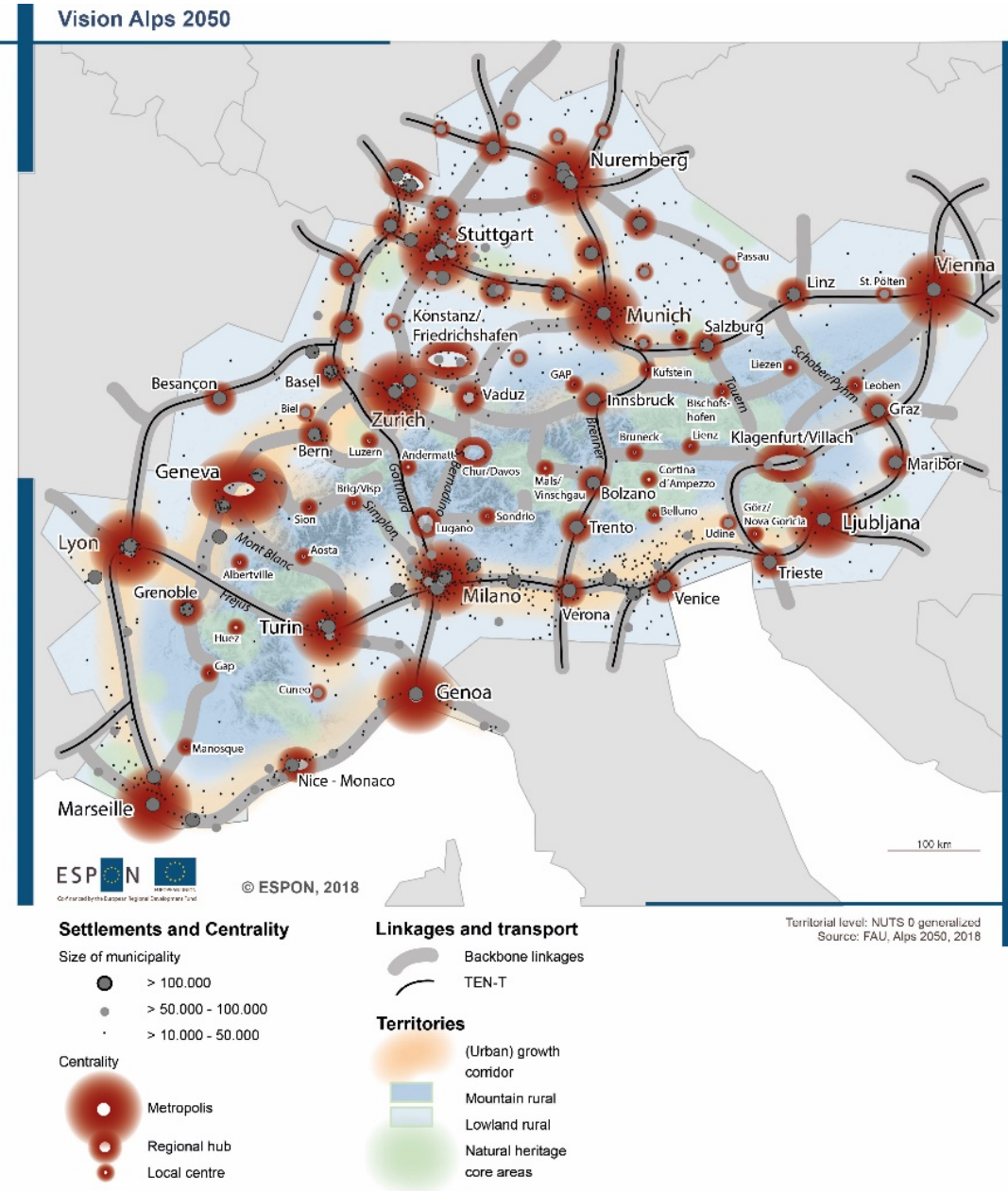
European Core



Towards a common vision

The vision translates important elements into a **spatial development strategy**:

- A draft document as basis for further political concretisation
- Aiming at a common space on the transnational scale, comprising both mountainous and lowland parts that are based on a joint inter-related spatial organisation.
- Aiming at balanced spatial development based on sustainability, safeguarding a good quality of life and an efficient management approach of governance.
- Based on three layers – settlement system, linkages and territories



Thank you

Tobias Chilla, University of Erlangen