

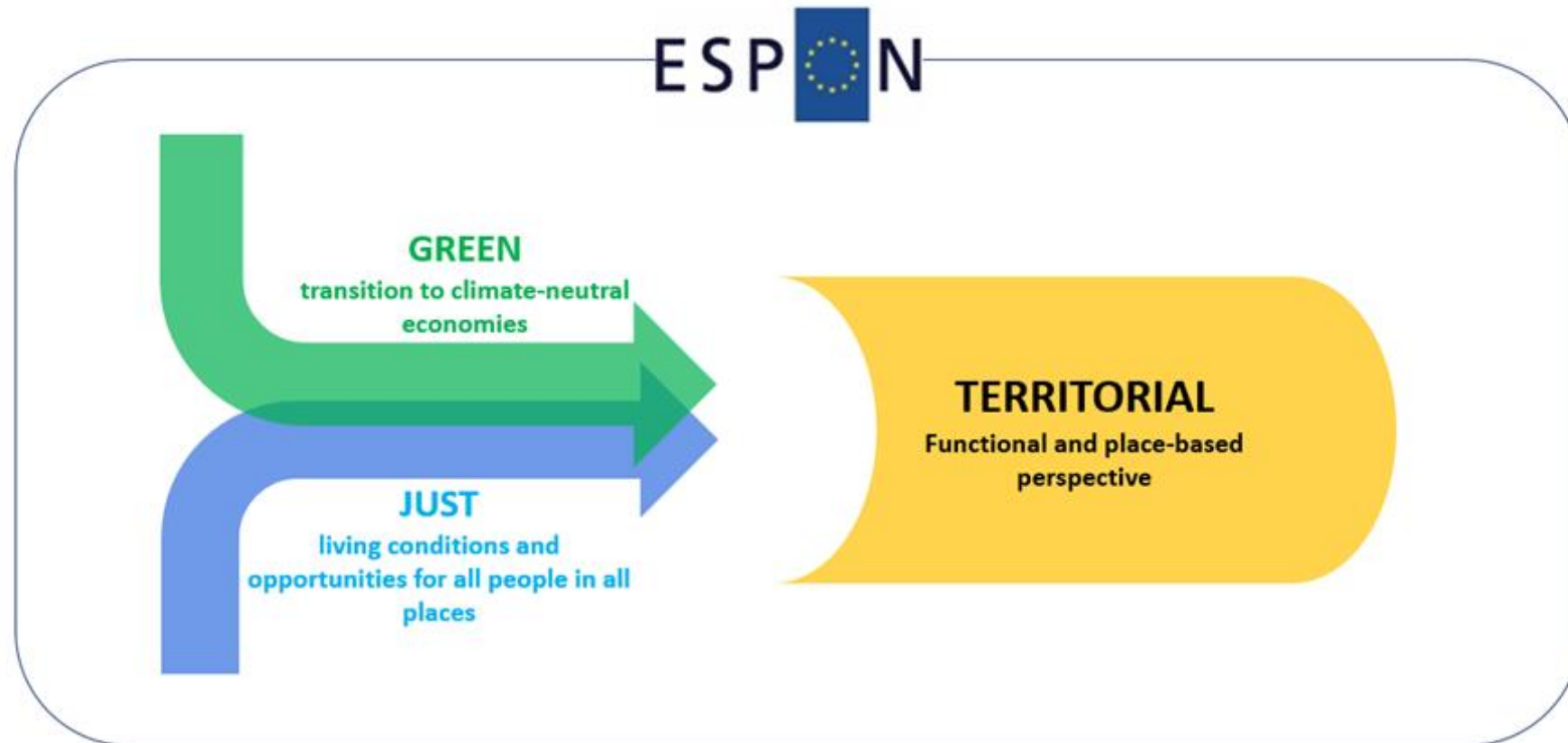
Designing the new ESPON 2030 Programme

Thiemo Eser (ESPON MA) and Wiktor Szydarowski (ESPON EGTC)

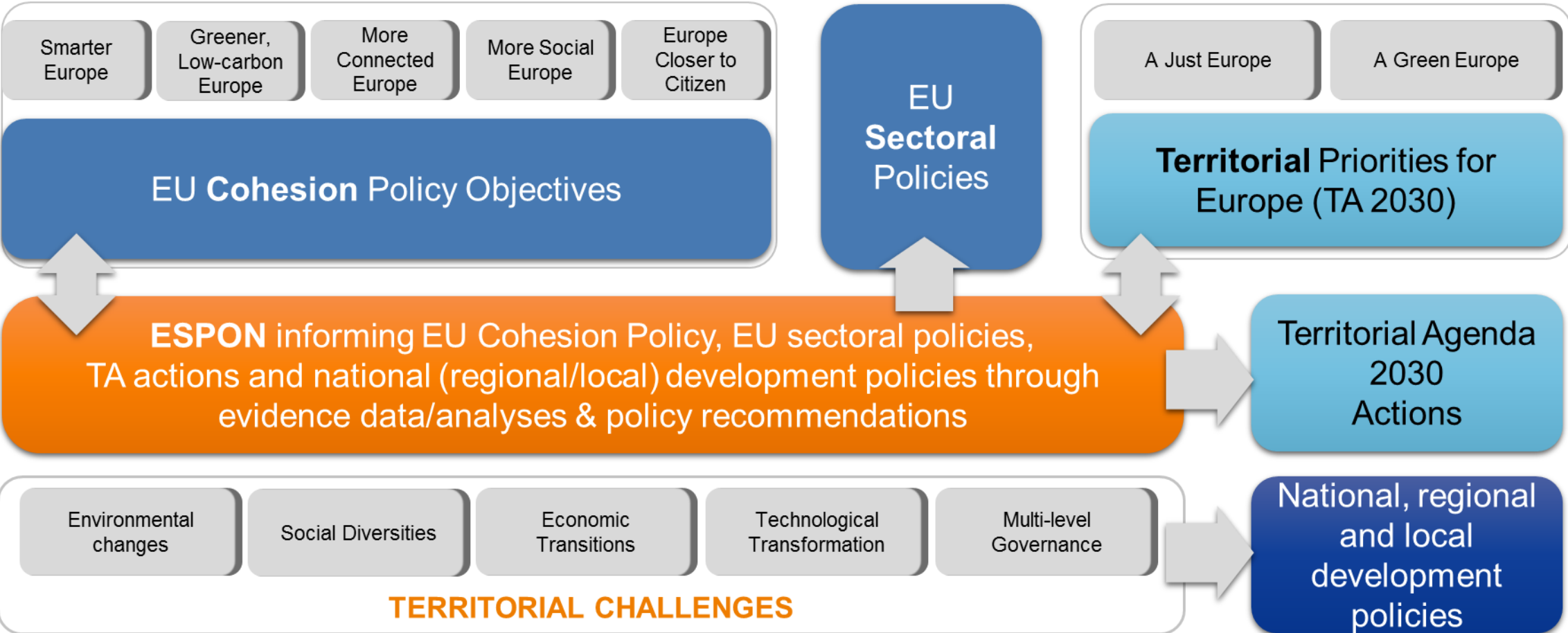
Version 24.3.2022

The ESPON 2030 Programme

ESPON provides territorial evidence to support stakeholders at all levels in achieving green transition to climate-neutral economies while ensuring at the same time just living conditions for all people in all places



Policy context for the **ESPON Programme**



The ESPON 2030 Programme

A decorative graphic on the left side of the slide. It features a vertical blue arrow pointing upwards. From the base of this arrow, several curved arrows branch out: a teal arrow pointing right, an orange arrow pointing left, a yellow arrow pointing right, and a dark teal arrow pointing right.

Expected to be approved in the first semester of 2022

A more strategic approach via thematic work streams called: **“Thematic Action Plans”**

Complemented by a series of cross-cutting **“Horizontal Measures”**



Thematic Action Plans

**The TAP is
a strategic
document
describing:**



Specific territorial trends and drivers

that policy making will have to address in the specific thematic field

The available territorial evidence

including data or research methodologies, existing and that could constitute a starting point

The additional evidence gaps

that ESPON should be suited to fill

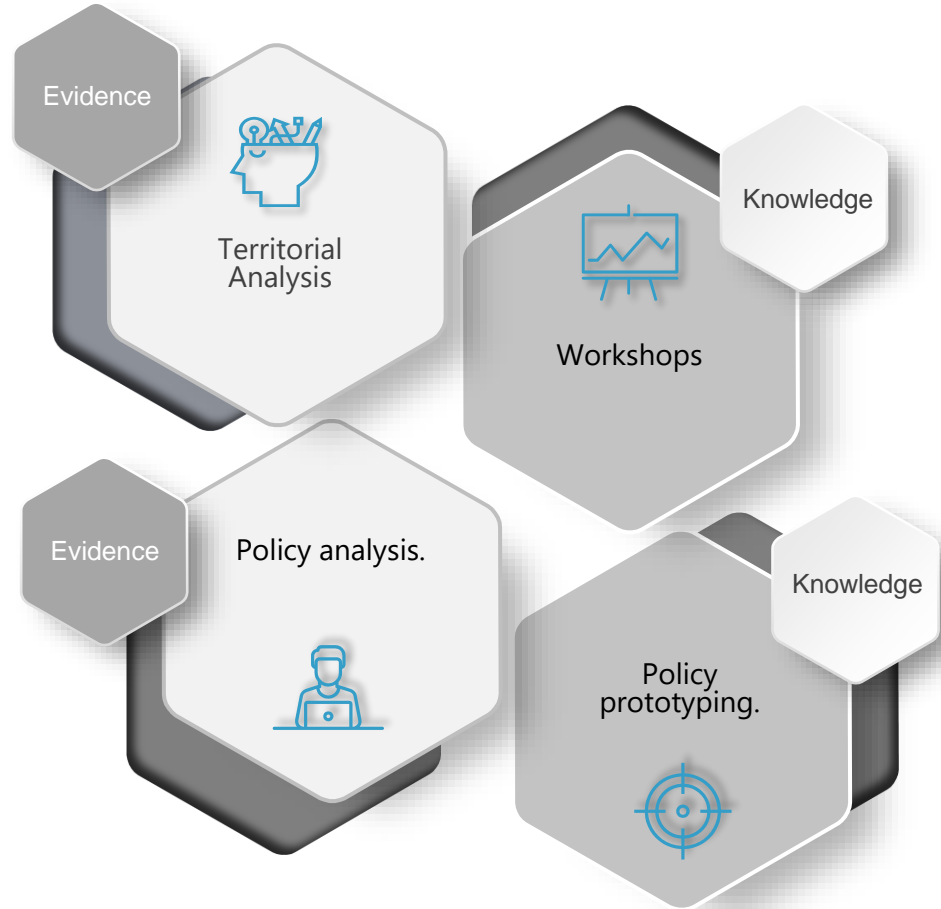
The knowledge gaps among policy makers at all levels

that prevent them from delivering effective policy response

Some major thematic activities

to bring the evidence to the policy makers and transfer it into actionable knowledge

Thematic Action Plans

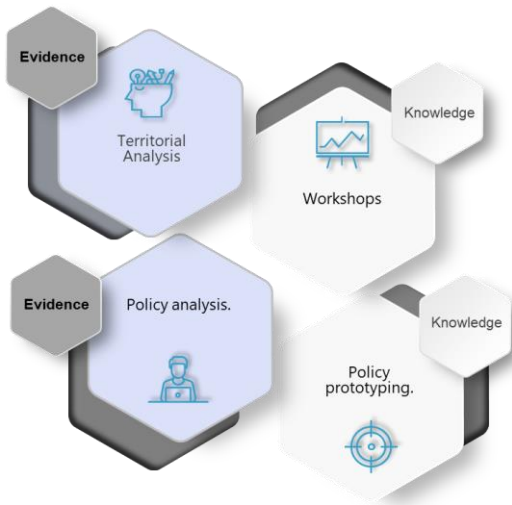


TAPs are composed of several activities

On one side, the activities related to the production of **evidence** (such as European research projects, targeted analyses, case studies, data, maps etc.)

On the other side, the activities related to the **knowledge development**, intended to deliver the evidence to the policy makers

TAPs evidence production



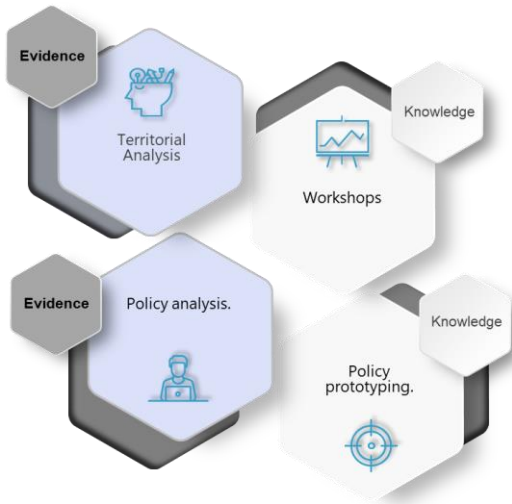
Europe-wide thematic activities:

- studies similar to current applied research projects, including pan-European collaborative actions with multilateral organisations and/or including involvement of national/regional stakeholders (for case studies);
- position papers, policy briefs, thematic papers;
- territorial and public policies scenarios on specific themes; pan-European comparative analyses and surveys (at various territorial levels);

Demand-driven thematic activities for TAP themes:

- fast-track targeted analyses (short-length and/or with reduced territorial focus); targeted analyses (traditional and foresight-driven);
- enhanced targeted analyses including further developed European territorial evidence and transferability assessment;
- case studies, both spin-off and on-demand; territorial reports (TAP-related at various territorial levels: country, local, FUAs...)

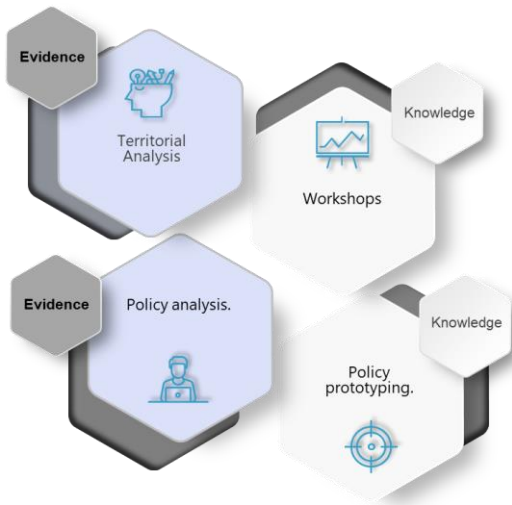
TAPs evidence production



Cross-thematic activities:

- Cross-cutting studies and scenarios;
- Territorial foresight reports (public policies oriented); territorial observation reports and atlases;
- Territorial impact assessments or other new methodologies (e.g. modelling, evaluation, policy analysis); territorial reports (comprehensive at EU/national levels);
- Supportive actions to TA2030 implementation (e.g. performance monitoring framework)

TAPs knowledge development



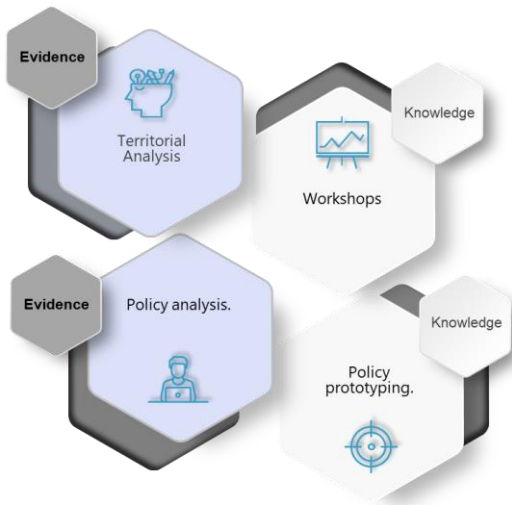
“Pushing evidence” activities (delivering the messages of the evidence production to the different stakeholders):

- standard outreach activities;
- publications,
- dissemination events;
- position papers
-

“Pulling evidence” activities (attracting the interest of the stakeholders and scientists) and “pulling” them in ESPON by directly involving in activities and debates:

- policy prototyping;
- territorial science boot camps;
- peer-to-peer workshops;
- digital community of practitioners
-

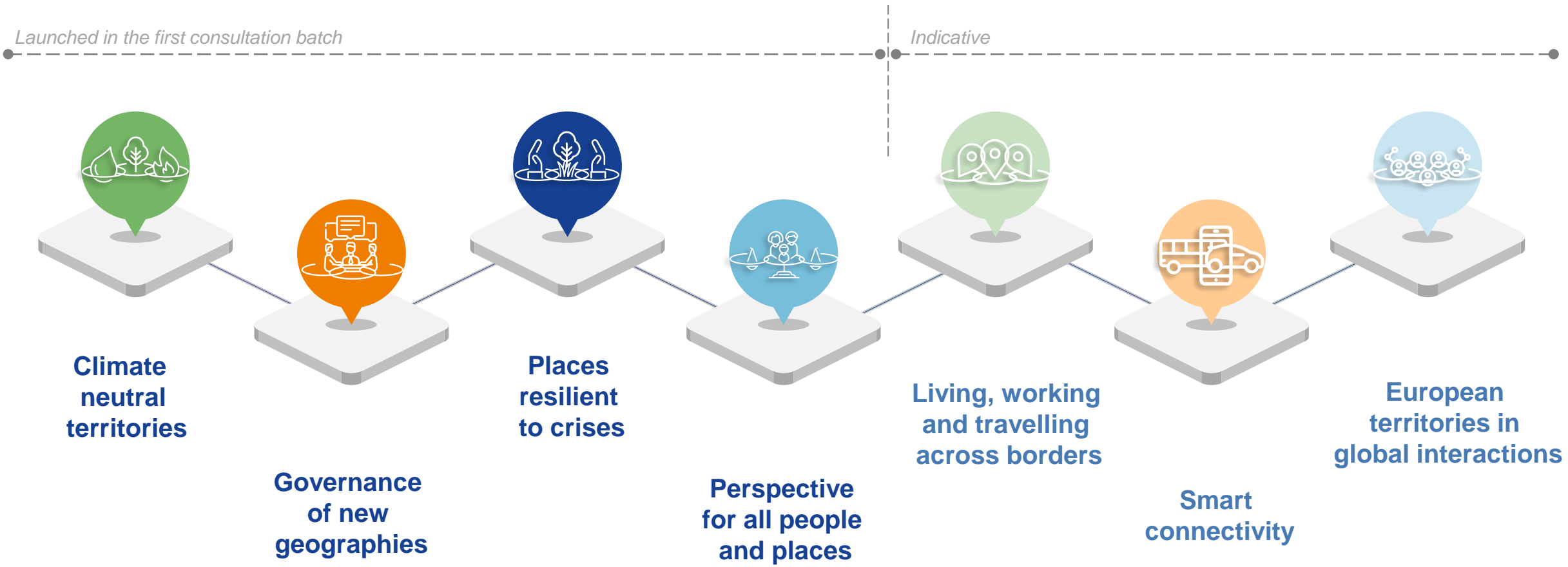
TAPs knowledge development



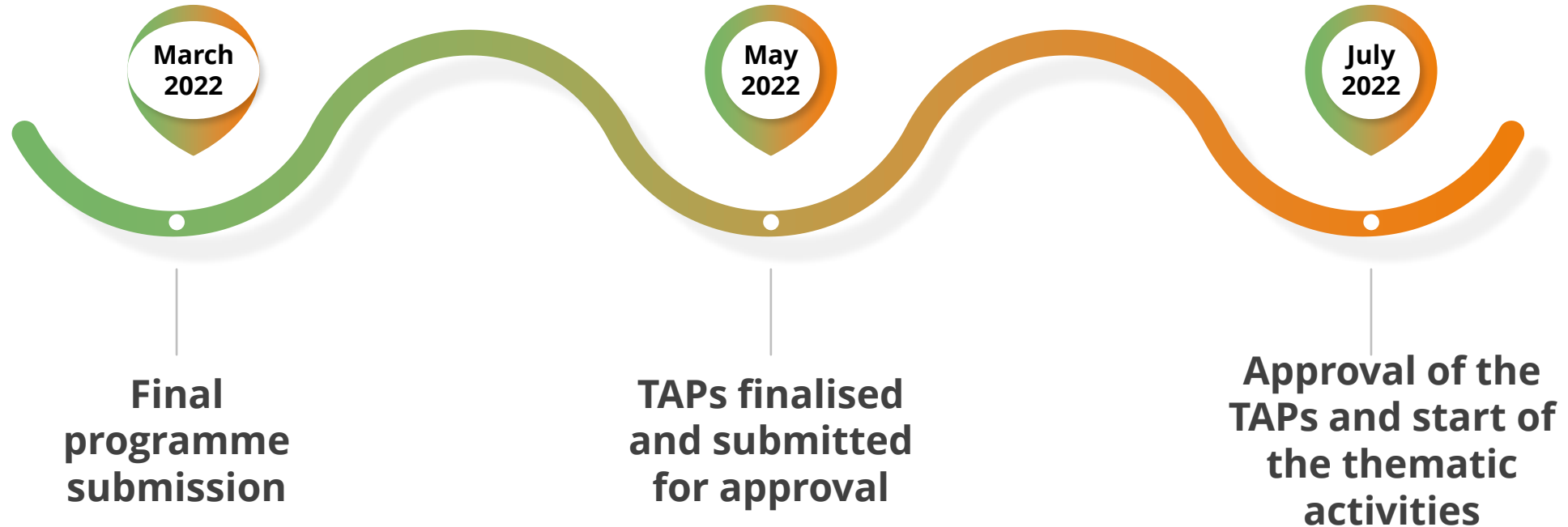
“Accompanying measures” (accompanying stakeholders in their process of understanding and use ESPON evidence, according to their requests):

- impact assessments;
- task force supports to policy processes;
-

The themes

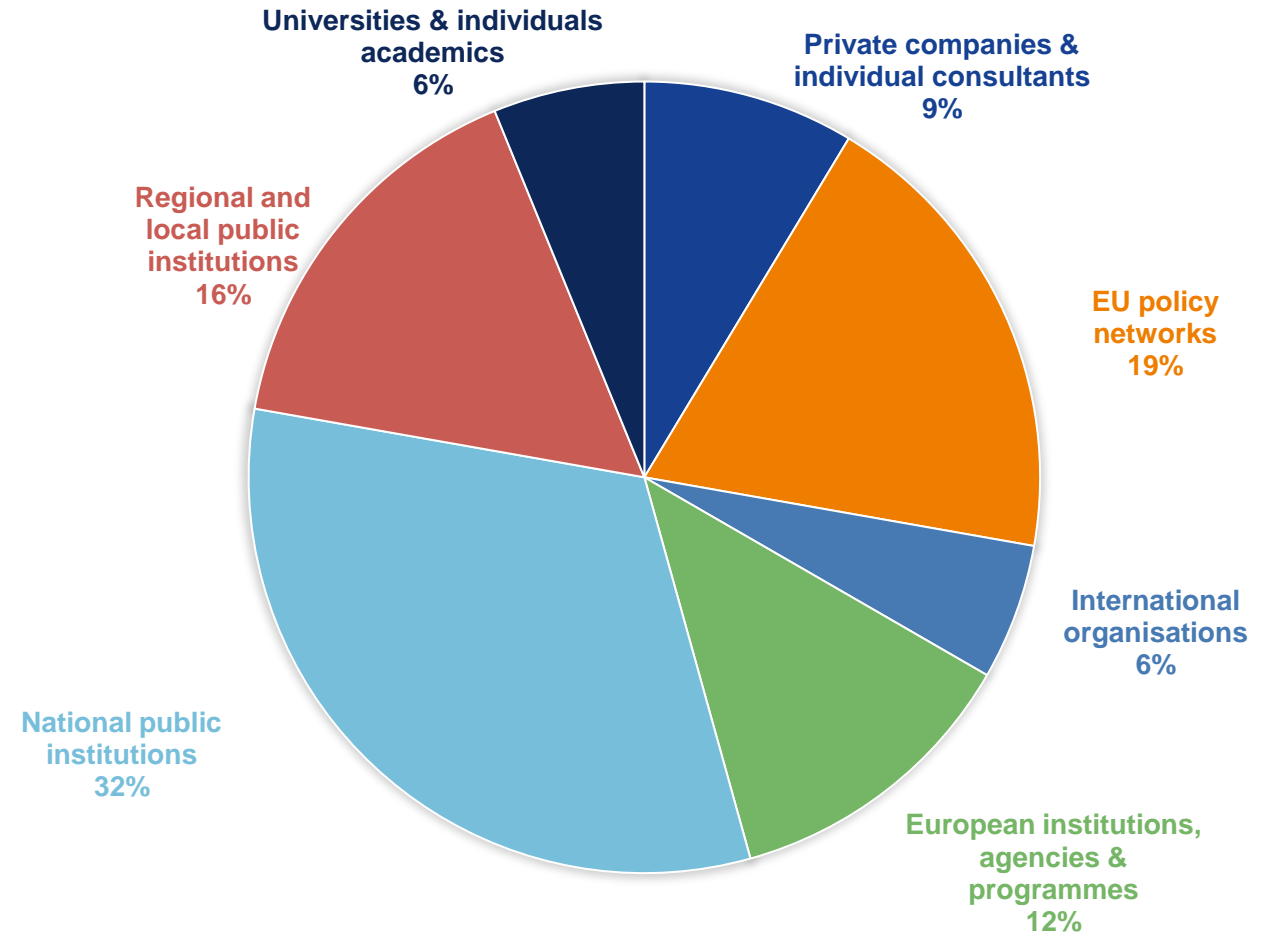


ESPON 2030 – milestones



Overview of the consultation process

- ▶ Kick-off event on 30 November 2021 – ca. 270 participants
- ▶ 5 bilateral meetings: the European Parliament, the OECD and several policy networks
- ▶ Focus Group meeting with researchers and ESPON 2020 Programme Monitoring Committee members
- ▶ Around 200 general comments and proposals for thematic activities received by end of February 2022



Factors impacting the content of TAPs

- ▶ New **geopolitical landscape** / emergency support for the current **migration wave** as a result of the war in Ukraine - cater for the needs of refugees
- ▶ Post pandemic **recovery** and building **resilience**
- ▶ Accelerating the **transition** to clean and fair **energy**, looking for more affordable, secure and sustainably-sourced energy
- ▶ Achieving a **climate-neutral economy** and overcoming the challenges of climate change and environmental degradation
- ▶ **Digital transformation** – new living options, new working patterns and new businesses, and its implicit territorial and spatial changes



① Governance of new geographies

objective



Develop the **knowledge base** on emerging new geographies in terms of their **delineations**, functional and cooperation **arrangements** and involved actors and stakeholders.

focus



On **functional territories** and territories facing state of **uncertainty** or challenges concerning their development paths. Finding appropriate and new governance mechanisms.

policy



Strengthen capacities and skills of policy makers in order to harness the potential of **functional approach** in planning and governance.

Potential research directions

Governance
of new
geographies



- ▶ The emerging functional areas (lake-regions, areas with a specific economic character, peripheral cross-border areas, etc.) – their **development potential** and **flow-based delimitation** (geographies of green infrastructure, health, crime, pollution etc.)
- ▶ Covid-19 and **revitalisation** of functional territories: new look on mobility patterns and public service provisions due to teleworking opportunities
- ▶ **Metropolitan governance** as a tool to deliver various EU policies and strategies, beyond the Cohesion Policy - in what way metropolitan cooperation can be useful in comparison to the existing administrative divisions?
- ▶ Spatial distribution of **growth** - production areas vs residential areas - co-development systems in a **cross-border** context (knowledge of flows, distribution of tax revenues in cross-border areas, problem of cross-border financing of public services, etc.)
- ▶ Scaled up functional approach in **governance arrangements** - how to roll out/implement territorial governance mechanisms for functional areas



② Climate neutral territories

objective



To further develop the **knowledge base** on the **territorial patterns** for a **green transition** in order to encourage and stimulate European territories to transition towards climate neutrality by 2050

focus



Territories with **additional challenges**, such as economic development, accessibility or social disparities.

policy



Strengthening skills and capacities of policy makers to further integrate **carbon neutral territories** in programming and policy making processes.

Potential research directions

Climate
neutral
territories



Opportunities and challenges of regions with different socio-economic situations and territorial specificities to **transition** towards climate **neutrality**



Blue energy and **land use planning**: aligning national maritime spatial plans with national energy and climate plans; analysing synergies between blue renewable energy systems and other sea uses



Climate adaptation: how to improve local cooperation, multilevel governance and cross-border cooperation for enhancing climate change adaptation and mitigation



Green transport: measuring impacts of changes in mobility on carbon emissions.



3 Places resilient to crises

objective



Creating evidence on European **territorial vulnerability** to different types of crises to help territories strengthen their adaptation, mitigation and recovery capacities.

focus



Different types of **crises**, i.e. environmental, economic, social, sanitary, digital on all levels of governance.

policy



Strengthening skills and capacities of policy makers to further **integrate resilience** in policy making processes.

Potential research directions

Places
resilient
to crises



Reference framework and system analysis for future-proof **territorial resilience** (definition, cooperation options with peer organisations for a European-level monitoring on local and regional resilience performance, etc.)



Governance and **capacity building** to increase resilience of territories (anticipation, mitigation measures, etc.)



Resilience and **intergenerational divides** in European regions



The added value of **culture** for territorial resilience



Cyber resilience practice for municipalities to safeguard local democratic processes/guarantee availability of (crucial) public services



4 Perspectives for all people and places

objective



Developing knowledge and territorial evidence on the key trends and determinants of **upward economic, social and institutional convergence** between European territories

focus



Territorial dimensions of social and economic **transformations**, including social progress and social innovation

policy



Strengthening the capacity to address the diversity of territorial development models in Europe

Potential research directions

Perspective
for all people
and places



Knowledge base on territorial patterns of social and economic **convergence** driven by interregional linkages and flows, including prospects for a dynamic and adaptive labour market



New territorial **models** of (sustainable and inclusive) economic growth / foundational economy and effective public investments



Livable environments and spatial planning response to shape attractive and inclusive places, including ensure the access to affordable and quality housing for all



Tools/policies unlocking the **potential of all places**, including citizen involvement and social innovation

// Thank you

[stay connected: www.espon.eu]