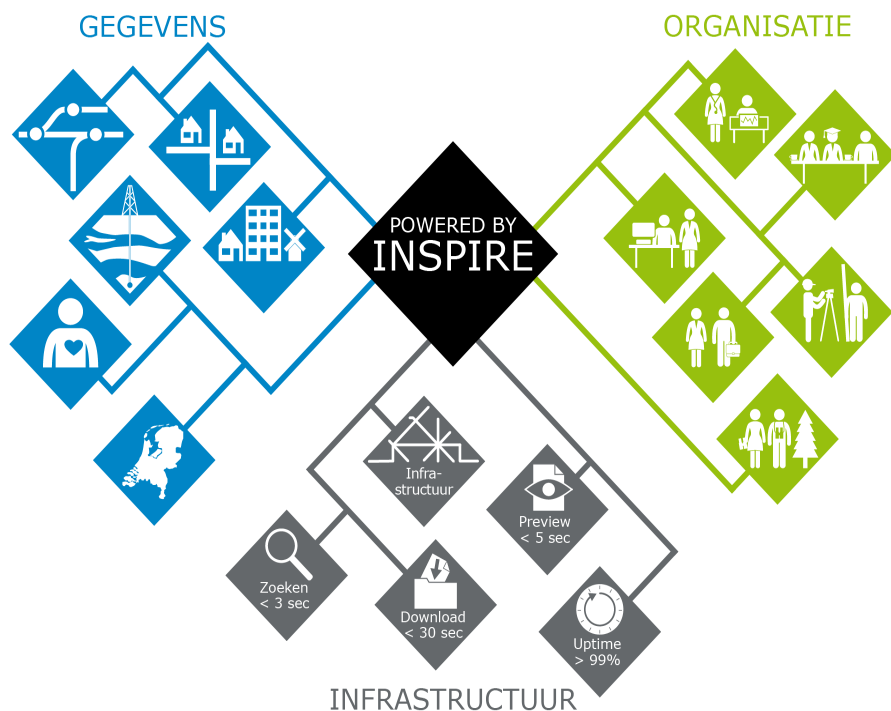




Ministerie van Infrastructuur en Milieu



# Get INSPIREd

Noud Hooyman

Head Policy Geo-information

Ministry of Infrastructure and  
Environment



## The INSPIRE Directive

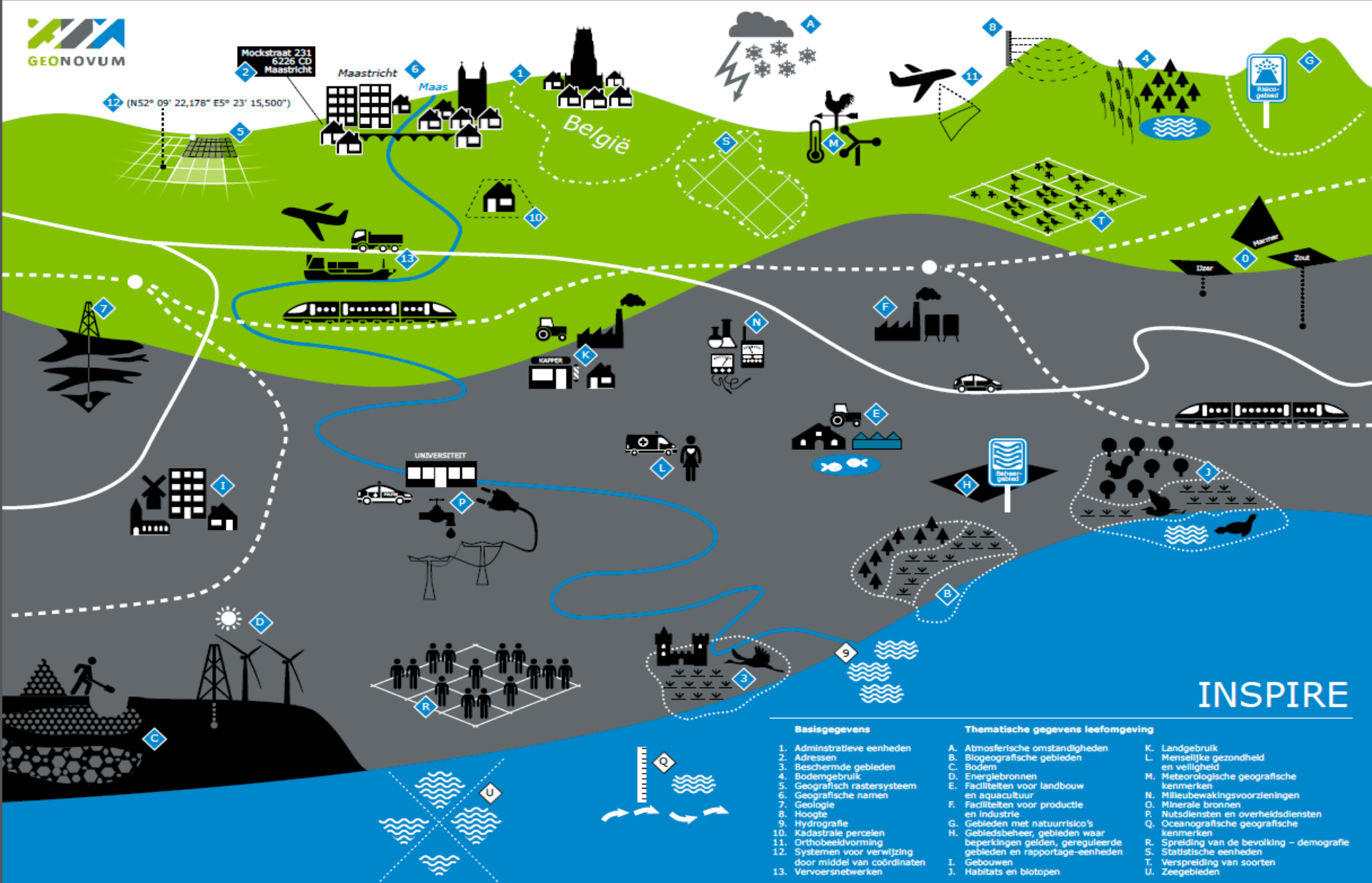




## Why INSPIRE?

- Origins: tackling environmental problems as climate change, nature and biodiversity, environment and health (*EU 6th Environmental Action Programme 2002-2012*).
- Initial objective: create an infrastructure to share spatial data and services to support environmental policies.
- INSPIRE was founded on the basis of five issues that were identified as presenting obstacles to this objective:
  - Missing or incomplete spatial data;
  - Incomplete descriptions of spatial data;
  - Difficulty to combine different spatial data sets;
  - Inaccessibility of spatial data;
  - Various barriers to data sharing.

# What is INSPIRE?



## Basisgegevens

1. Administratieve eenheden
2. Adressen
3. Bescherme gebieden
4. Bodemgebruik
5. Geografisch rasterstelsel
6. Geografische namen
7. Geologie
8. Hoogte
9. Hydrografie
10. Kadastrale percelen
11. Orthobeeldvorming
12. Systemen voor verwijzing door middel van coördinaten
13. Vervoersnetwerken

## Thematische gegevens leefomgeving

- |   |  |
|---|--|
| <ul style="list-style-type: none"> <li>A. Atmosferische omstandigheden</li> <li>B. Biogeografische gebieden</li> <li>C. Bodem</li> <li>D. Energiebronnen</li> <li>E. Faciliteiten voor landbouw en aquacultuur</li> <li>F. Faciliteiten voor productie en Industrie</li> <li>G. Gebieden met natuurrisico's</li> <li>H. Gebiedsbeheer, gebieden waar beperkingen gelden, gereuleerde gebieden en rapportage-eenheden</li> <li>I. Gebouwen</li> <li>J. Habitats en biotopen</li> </ul> | <ul style="list-style-type: none"> <li>K. Landgebruik</li> <li>L. Menselijke gezondheid en veiligheid</li> <li>M. Meteorologische geografische kenmerken</li> <li>N. Milieubewakingsvoorzieningen</li> <li>O. Minerale bronnen</li> <li>P. Nuttsdiensten en overheidsdiensten</li> <li>Q. Oceanografische geografische kenmerken</li> <li>R. Spreiding van de bevolking - demografie</li> <li>S. Statistische eenheden</li> <li>T. Verspreiding van soorten</li> <li>U. Zeegebieden</li> </ul> |
|---|--|



# What is INSPIRE?

- Infrastructure
  - Implementing rules for network services
  - Uptime > 99%, download < 30 sec.
- Data
  - Implementing rules for metadata and data specifications
  - 34 themes, harmonised, interoperable data
  - Largely open data
- Organization
  - Community process with experts and stakeholders from member states and European institutions
  - Common set of policies, standards and infrastructure



# INSPIRE principles

- Data should be collected only once and kept where it can be maintained most effectively.
- It should be possible to combine seamless spatial information from different sources across Europe and share it with many users and applications.
- It should be possible for information collected at one level/scale to be shared with all levels/scales; detailed for thorough investigations, general for strategic purposes.
- Geographic information needed for good governance at all levels should be readily and transparently available.
- It should be easy to find what geographic information is available, how it can be used to meet a particular need, and under which conditions it can be acquired and used.



# DEMO

http://www.nationaalgeoregister.nl/geonetwork/srv/d... Nationaal Georegister | 18 r...

Home Actueel **Catalogus** PDOK Over NGR Voor ontwikkelaars

Zoeken >> Zoekresultaten

inspire Met als resultaat:  Online kaarten  Downloadbare data  Data op aanvraag  Toon uitgebreide zoekcriteria

Het Waterschapshuis • inspire\*

**FILTER** 1-18 resultaat(en) / 18 Sorteer volgens Relevantie

**Trefwoorden**

- inlandwaters (12)
- Hydrografie (12)
- Nutsdiensten en overheidsdiensten (7)
- utilitiesCommunication (5)
- sluizenverkeersinstallatie (3)
- rioolgemaal (3)
- afvalwaterzuiveringsinstallatie (3)
- + Toon meer

**Licenties**

- Public Domain (18)

**Brontype**

- dataset (16)
- service (2)

**Categorieën**

- inspire (18)

**Servicetype**

- download (1)
- view (1)

**Online Bronnen**

- ATOM (17)
- OGC:WMS (17)

**Jaar**

- 2014 (1)

**INSPIRE view-service...**

**INSPIRE down-service...**

**Aquaduct**

**Stuw**

http://inspire-geoportal.ec.europa.eu/ INSPIRE > WELCOME TO INSPI... INSPIRE Geoportal

Welcome to the INSPIRE geoportal

The INSPIRE Directive requires the Commission to establish a community geo-portal and the Member States shall provide access to their infrastructures through the geo-portal as well as through any access points they themselves decide to operate.

[More...](#)

**Discovery / Viewer**

Search, discover and access geographic information provided by European governmental, commercial, and non-commercial organizations.

[More ...](#)

**Validator**

The purpose of the INSPIRE Metadata Validator is to test the compliance of INSPIRE metadata with the INSPIRE Metadata Regulation.

[More ...](#)

**Metadata Editor**

Create metadata according to the INSPIRE implementing rules.

[More ...](#)

**Resource Browser**

Technical insight into resource metadata

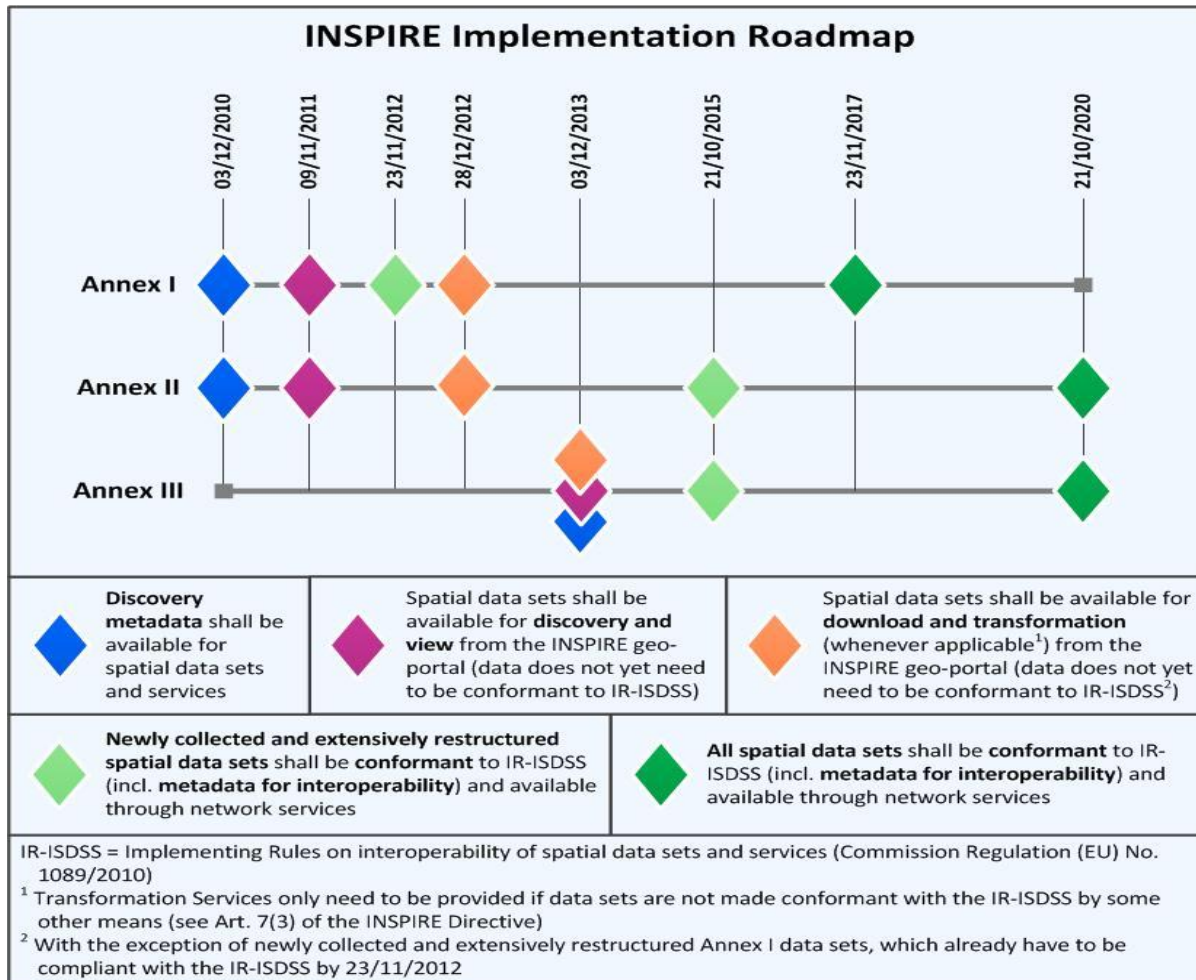
[More ...](#)

SCANDINAVIA  
Trondheim  
Oslo  
Helsinki  
St. Petersburg  
Moscow  
Warsaw  
Kiev  
Prague  
Vienna  
Brussels  
London  
Paris  
Zürich  
Bern  
Lyon  
Geneva  
Milan  
ALPS  
Ljubljana  
Zagreb  
Naples  
Istanbul  
Ankara  
Athens  
Lisbon  
Seville  
Algeria  
Tunis

Where to find the data, how to access it – assisted by Wideke Boersma, Geonovum



# State of play







## Get INSPIREd!?

- The new Dutch Environmental Planning Act, powered by INSPIRE
- E-reporting, align with environmental directives
  
- ESPON use cases???