



# New ESPON activities

## ESPON Seminar

“Territory matters: Keeping Europe  
and its regions competitive”

16-17 June 2016

Amsterdam, The Netherlands

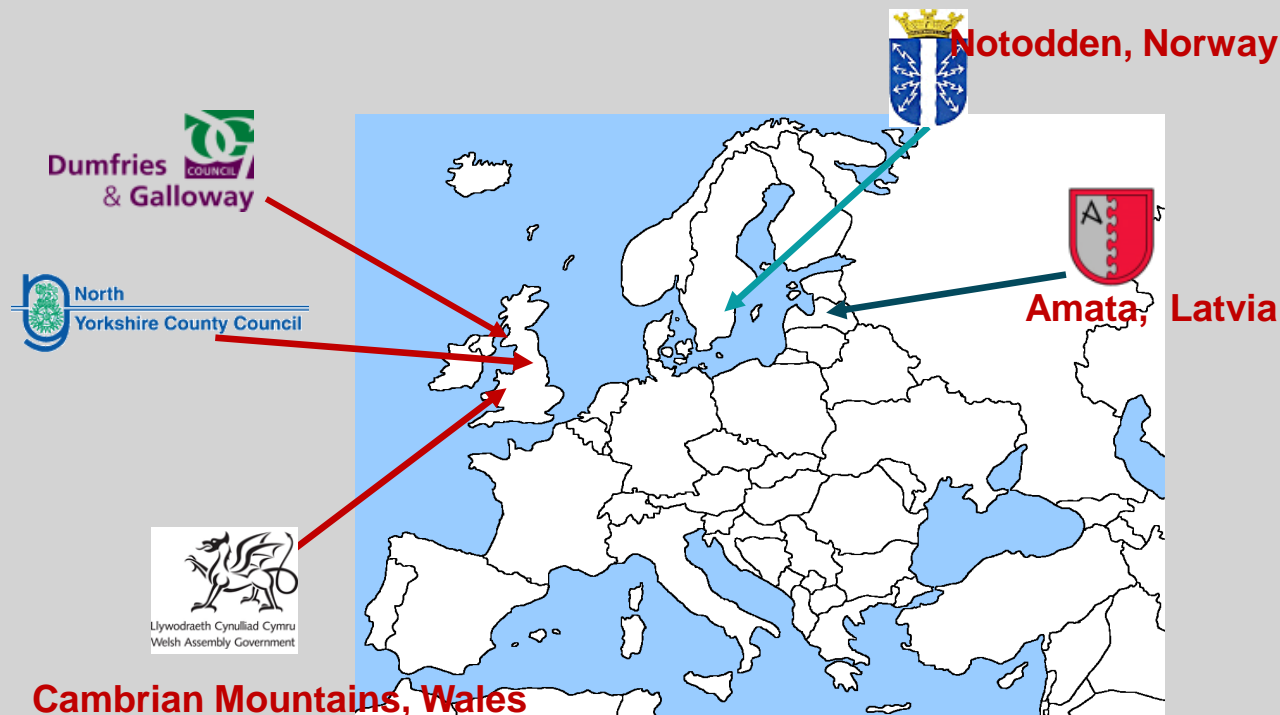


Inspire policy making by territorial evidence

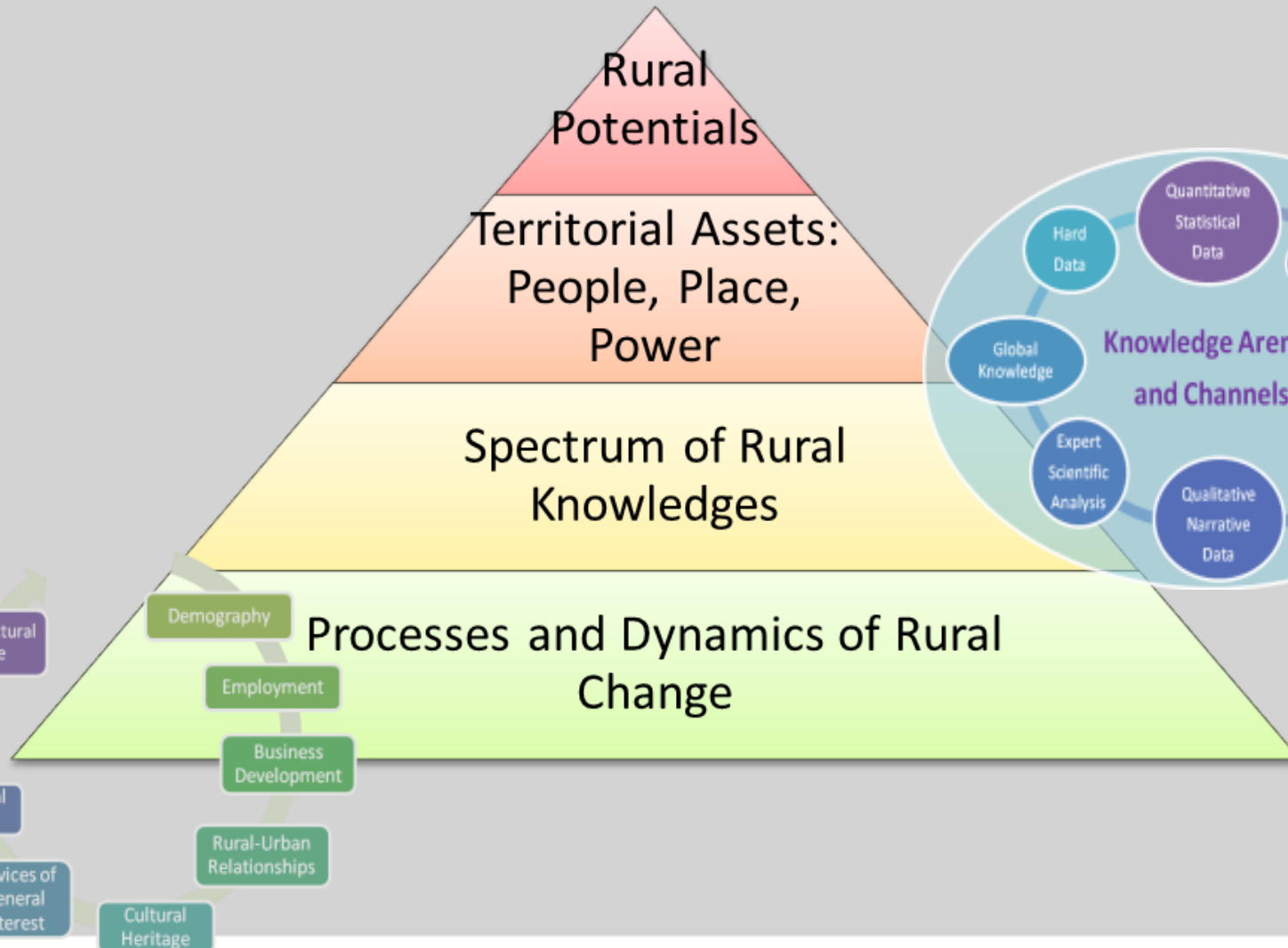
# Workshop E: Territorial specificities

## Key policy questions on the basis of the PURR Project:

- What can be considered for assessing the territorial potential of rural regions in Europe?



# Workshop E: Territorial specificities



# Workshop E: Territorial specificities

Top Down Perspective (TD)



Step 1 Benchmarking the region in its broader context

- Comparative quantitative data from European, national and sub-national sources
- Application of the 'Magnifying Glass Method'



Step 2 The regional context and stakeholder perspective

- Stage 1: Informal discussions with stakeholders
- Stage 2: Formalised workshops involving use of 'Rural Potentials Stakeholder Template' and SWOT analysis technique

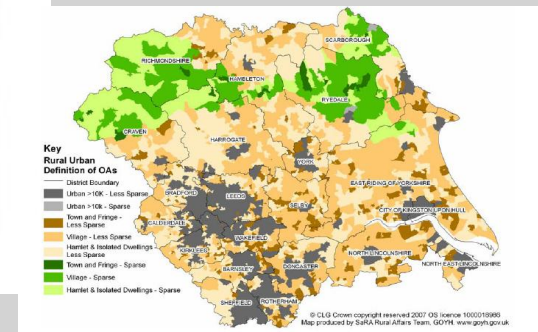
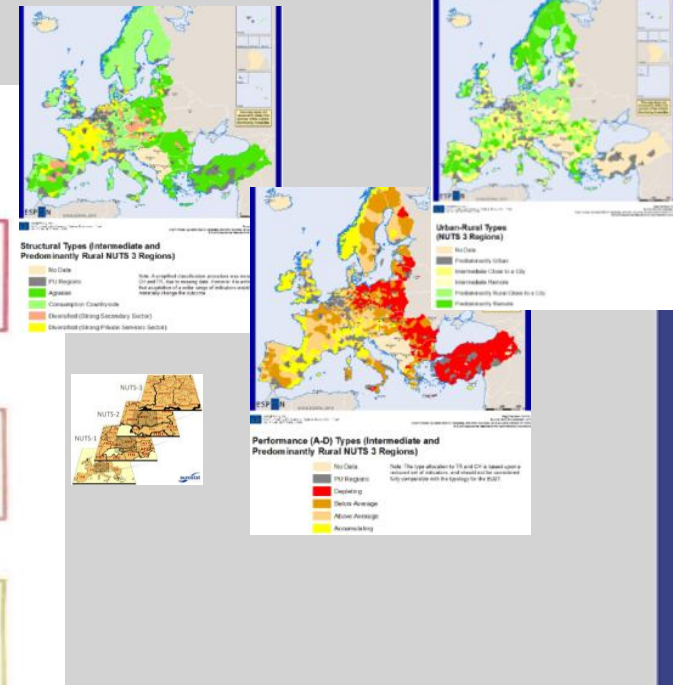
Step 3 Assessing the region's territorial potentials

- Consolidation of Template and SWOT analysis
- Possible use of scenario or foresight techniques
- Reflection upon development meta-narrative

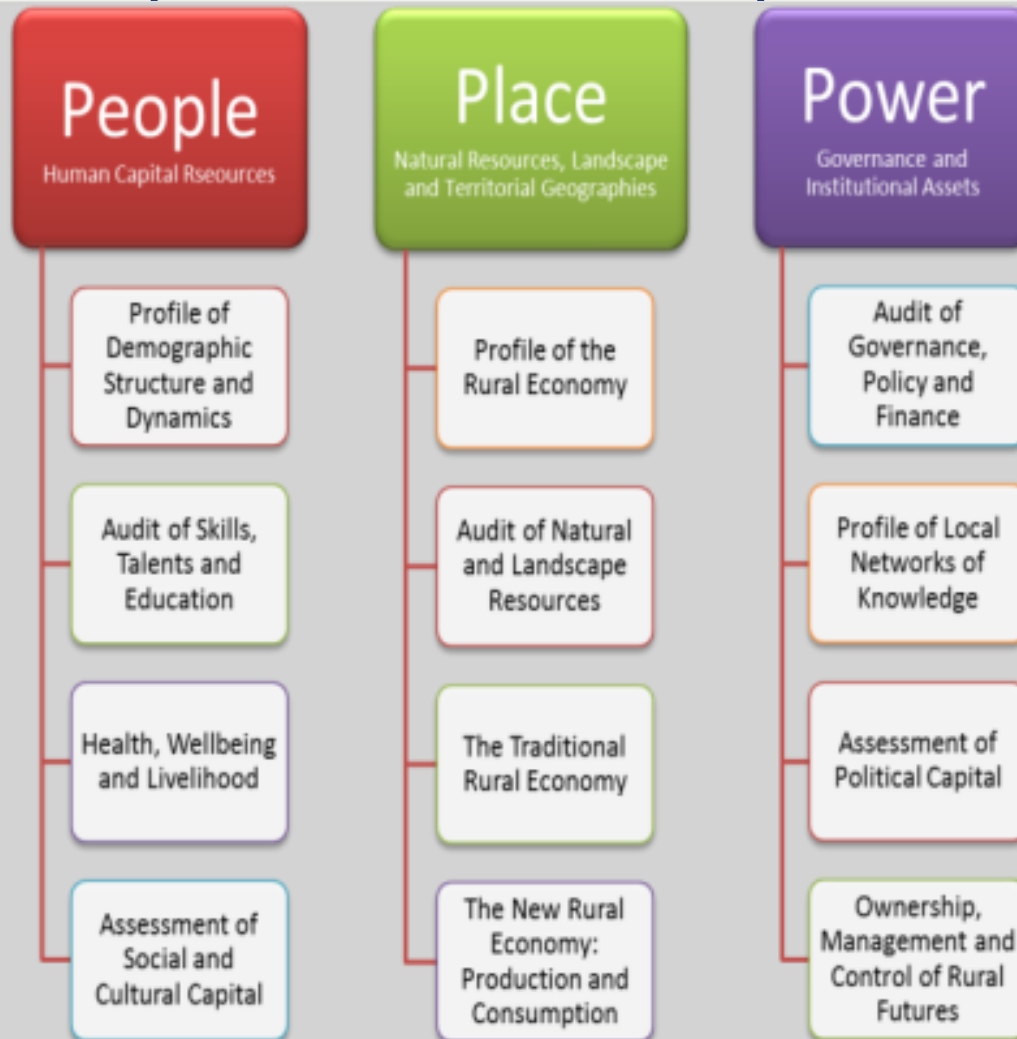
Step 4 Policy options and future development

- Consideration of strategic postures
- Analysis of possible policy options, scenarios and actions
- Exploring frameworks of policy implementation

Bottom Up Perspective (BU)



# Workshop E: Territorial specificities



# Workshop E: Territorial specificities

## Drivers

*Contextual:* Demography, economy, rural development, energy, transport, climate change, value change etc.

*Policy related:* Global, EU, state, regional and local policy interventions



## Strategy

Strategic postures and portfolio of actions

## Based on:

Key issues and potentials in regions

Ex-ante impact assessment of existing scenarios

Stakeholder perspective

## Scenarios:

...as general strategies and actions for developing potential

based on qualitative foresight

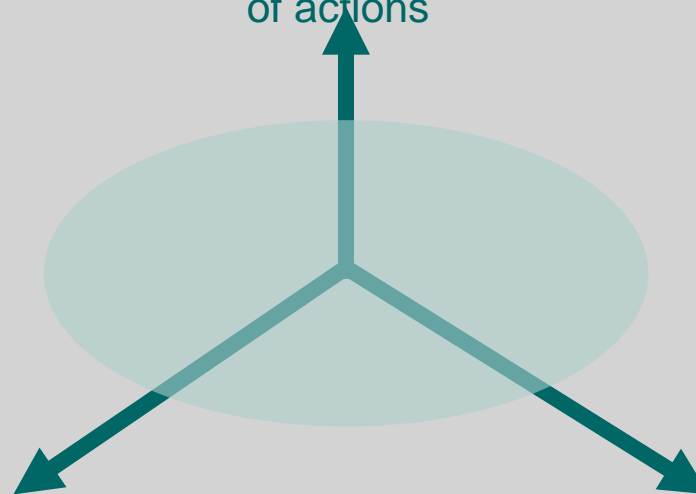
improving strategic decision making and consensus building

## Development narratives

Prevailing development paradigms and values

## Implementation

Governance, frameworks of policy implementation



## Workshop E: Territorial specificities

### **Key things to consider when assessing potential of rural regions:**

- Spectrum of knowledge
- 4-step methodology: adaptable, flexible and intuitive
- Holistic approach: people, place and power
- Challenges and opportunities for territorial governance
- Data issues (availability, scale...)
- ESPON data is useful but only part of story
- Spatial planning processes can help to identify and realise territorial potential strengthen regional resilience and promote effective governance

## Workshop E: Territorial specificities

### **Key things to consider when assessing potential of rural regions:**

- Rurality and rural development agendas are highly contested and diverse
- Difficult to define a rural stakeholder and rural stakeholder communities can be fragile
- Rural regions need to be creative and proactive
- Regional resilience (economic, social, environmental...)
- Identify your assets eg. natural heritage activities, 'core' activities (environmental management....), 'primary production and extraction' activities; and 'reliant' activities



## List of authors of PURR Final Report

Neil Adams, London South Bank University

Hild-Marte Bjørnsen, Norwegian Institute for Urban and  
Regional Research

Dace Jansone, Vidzeme University of Applied Sciences

Steinar Johansen, Norwegian Institute for Urban and Regional  
Research

Philip Pinch, London South Bank University

Visvaldis Valtenbergs, Vidzeme University of Applied Sciences

