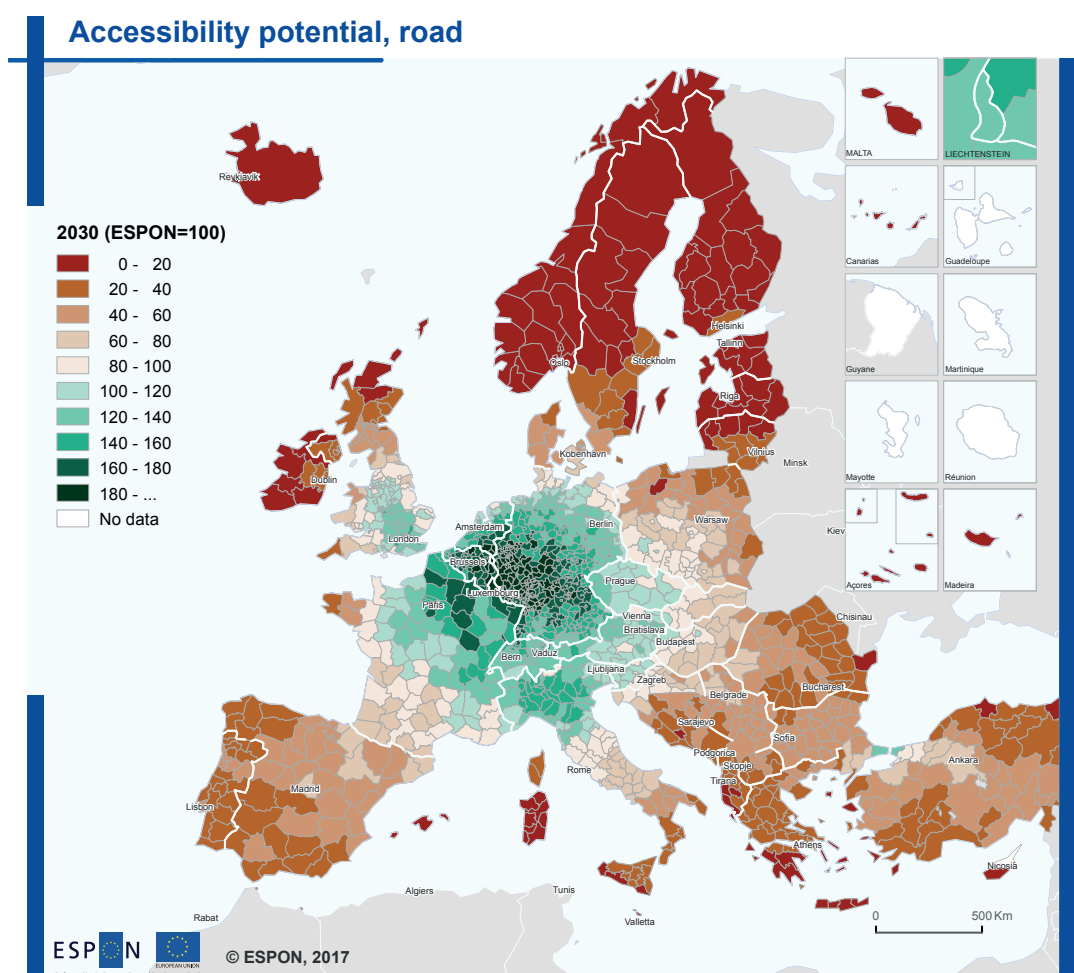


# South Europe at the crossroads: are we making the right decisions about accessibility investments for the future?

## Road potential accessibility: prospects and scenarios 2030



Road accessibility follows the core-periphery pattern in Europe with highest access around Germany, north-eastern France, the Netherlands and Belgium.

Accessibility decreases towards regions located outside the European core. The Romanian counties Botoşani, Neamţ, Suceava and Tulcea, the Greek regional units of Aetolia-Acaranania and Preveza as well as the Peloponnese peninsula are among the areas with lowest potential accessibility by road.

Northern Italy, with its combination of a well-developed road infrastructure and a high concentration of population, has an accessibility potential by road 50% above the European average.

Portugal and the Balkans exhibit high relative but low absolute growth in potential accessibility.