

ESPON



EUROPEAN UNION

Co-financed by the European Regional Development Fund



ESPON seminar
Where are European cities heading?
Evidence for better policy-making

Implementation of the Single Operation



Inspire policy making by territorial evidence

ESPON Mission

- Promoting high quality of policy process to ensure that policies fit to the specifics of different places in Europe

by

- Strengthening evidence base, ensuring knowledge transfer and policy learning to public authorities and other policy actors at all scales

Applied research

- **7 ongoing:**
 - The geography of new employment dynamics
 - The world in Europe, global FDI flows towards Europe
 - SMEs in European regions and cities
 - Territories and the low carbon economy approach
 - Inner peripheries: National territories facing challenges of access to basic services of general interest
 - Possible European territorial futures
 - Territorial governance and spatial planning systems in Europe

- **7 new applied research activities** will be pre-announced at the beginning of next year

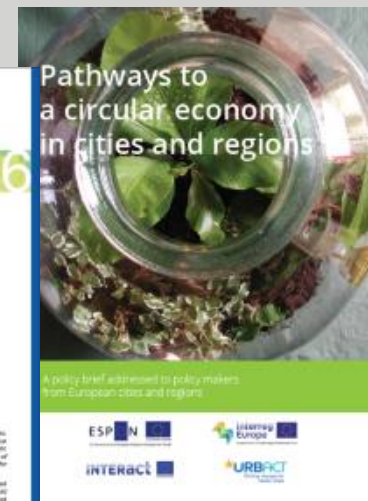
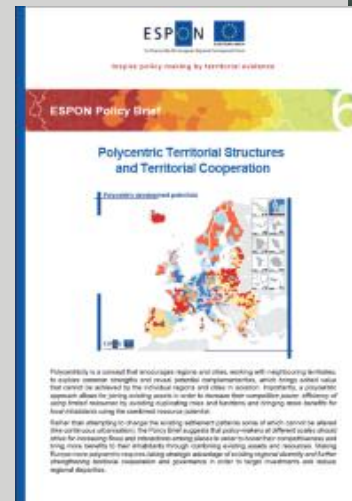
Targeted analyses

- **6 ongoing + 8 new targeted analysis projects:**
 - Regional strategies for sustainable and inclusive territorial development
 - Spatial dynamics and strategic planning in Metropolitan areas
 - Thinking and planning in areas of territorial cooperation
 - Linking protected areas to territorial development
 - Territorial and urban potential connected to migration and refugee flows
 - BT2050- Territorial scenarios for the Baltic sea region

- **Next cut-off date 13 January 2017**

SO2: Targeted Evidence Support

- Screening the demand among ESIF programmes for tailor-made territorial evidence - **19 responses received in 2016.**
- **2 Policy Briefs published:**
 - ‘Pathways to a Circular Economy in cities and regions’ (with URBACT, INTERACT and INTERREG Europe, October 2016)
 - ‘Polycentric territorial structures and territorial cooperation’ (October 2016)
- Upcoming policy briefs:
 - Accessibility indicators and scenarios
 - Digital transformation
 - Depopulating/ shrinking rural areas/ lagging regions
 - Regional/ functional urban governance and planning
 - Green infrastructure



S03: Territorial Observation & Tools

➤ EU Territorial Review:

- **Main territorial development trends** in relation to the key challenges: recovery from the global economic recession, refugee inflows, global competition, ageing and migration, accessibility and connectivity
- **Specific patterns of development** in cities, rural areas, specific regions and macro-regions in Europe
- **Innovative ideas and reflections post 2020** mainly focused on the objective of European territorial cooperation

The report will be finalised, presented and discussed at a conference in October 2017

S03: Territorial Observation & Tools

- **ESPON (ex-ante) TIA tool upgrade:**
 - Update the tool into a practical and user-friendly application (update and classify indicators, improve user interface and administrator module)
 - Integrate Urban Impact Assessment in TIA tool
 - Integrate Cross-border Impact Assessment in TIA tool
 - Train moderators
 - Use the TIA tool upon demand
 - Provide user support for using the TIA tool and other tools

SO3: Territorial Observation & Tools

- ESPON Toolbox – 11 Guidance Sheets, Practical Tools for Analysis and Policy-making
- Functional urban and metropolitan regions in Europe
- 2 custom-made macro-regional monitoring tools



European and Transnational Outreach

Main Activities

- Launch of new ESPON website (Spring 2017)
- Launch of Transnational Outreach project (Workplan)
- 2 ESPON seminars (Malta/ May 2017 and Estonia/ December 2017)
- ESPON workshop (tbd)
- High-level conference on the European Territorial Review and Cohesion policy (October 2017/ provisional)

ESPON



EUROPEAN UNION

Co-financed by the European Regional Development Fund



Thank you!

Ilona Raugze
ESPON EGTC Director
ilona.raugze@espon.eu

4, rue Erasme
Luxembourg
Tel: +352 20 600 280
www.espon.eu



Inspire policy making by territorial evidence