



Co-financed by the European Regional Development Fund

Inspire Policy Making with Territorial Evidence



# Cross-border Public Services in Europe – updating and upgrading the inventory

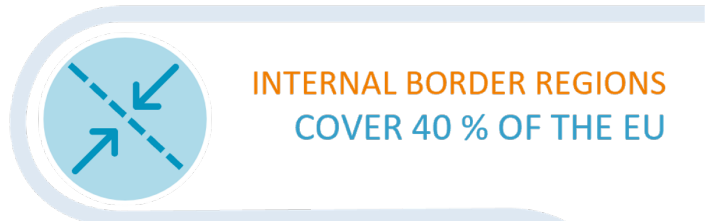
AEBR event

Andreea China, ESPON EGTC

Vaasa, 16 June 2022

# Cross border areas

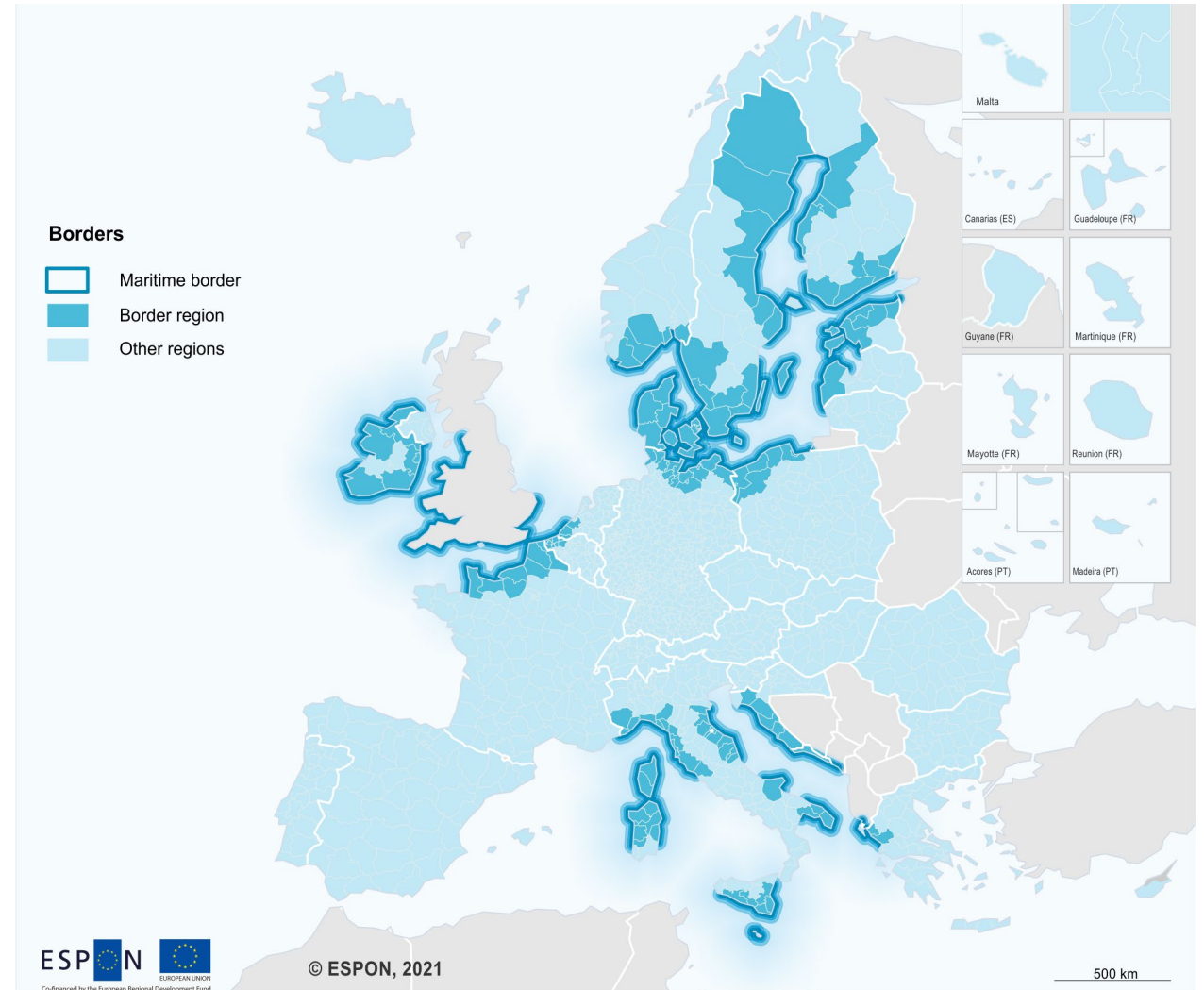
## EU facts and figures:



**PRODUCE**  
30 % OF THE EU'S GDP



**HOST**  
~ 2 MILLION CROSS-BORDER COMMUTERS



# Cross border areas



reflect the European diversity



successful laboratory of European integration



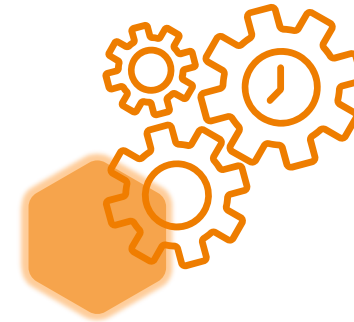
places of innovation and cooperation



contribute to sustainable regional development



contribute to the implementation of cohesion policies



monitoring and observation of flows and interactions within cross-border regions is one of the European Commission priorities



having great potentials to remove further obstacles and enhance cooperation

# 1<sup>st</sup> ESPON CPS study



**Targeted analysis,** involving 11 stakeholders in 10 cross-border areas



AEBR as Helpdesk

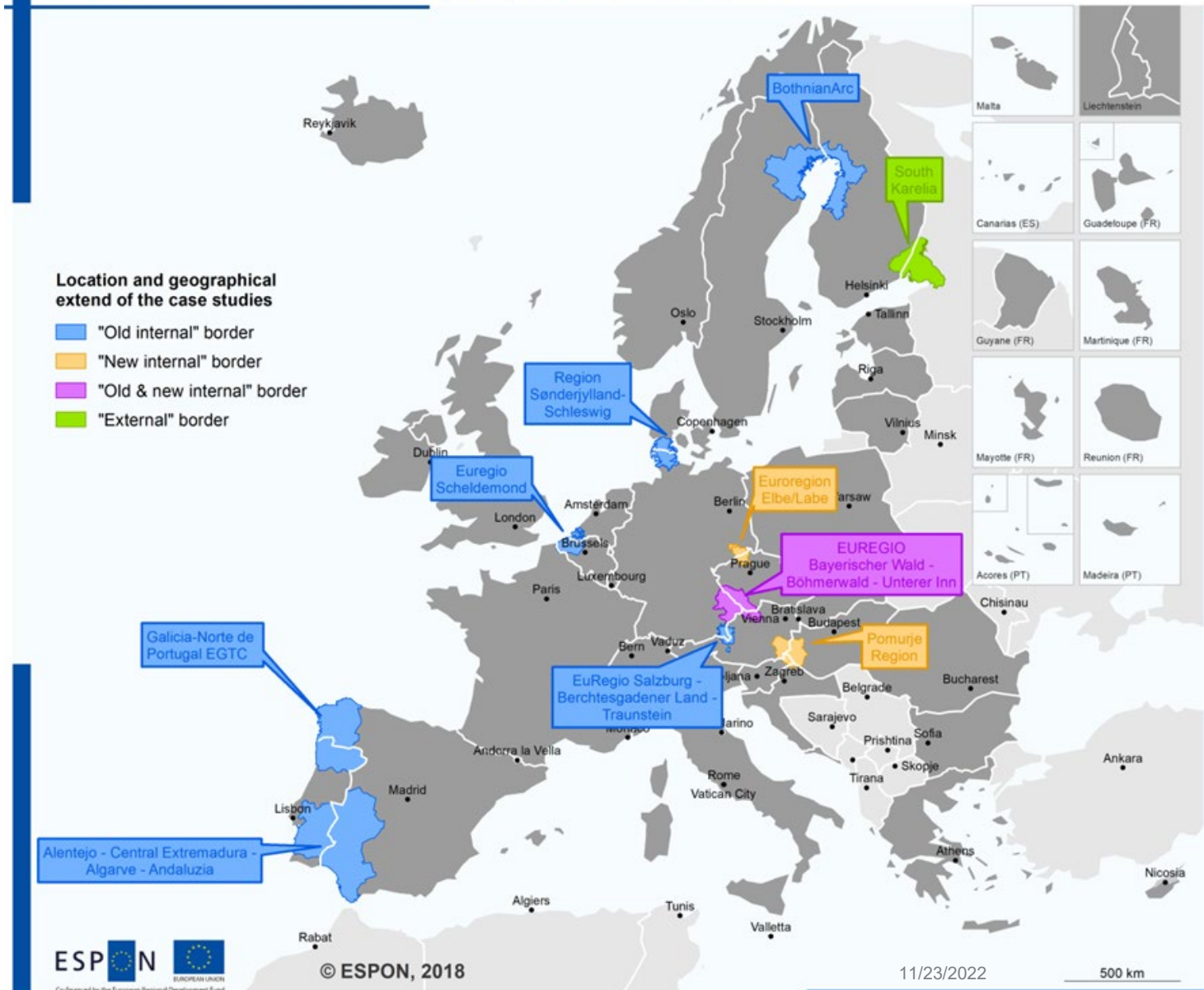


Research Team led by Spatial Foresight GmbH



Completed : November 2018

## Cross-border public services (CPS): Case study regions



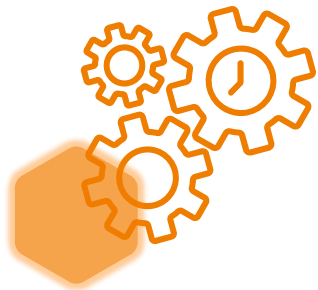
# 1<sup>st</sup> ESPON CPS // results

**ESPON CPS - Cross-border Public Services (2018) – first attempt in creating an integrated, complete database at EU level**

- It aimed to create an integrated common methodological approach for defining CPS,
- It brought to light harmonisation challenges,
- It aimed to design a method to collect, in an integrated and efficient manner, the necessary data to develop a comprehensive inventory of CPS at EU level,
- It provided a set of policy recommendations presented as a practical guide on how to implement CPS and to face potential obstacles



# For the recent past ... CPS has taken the spotlight



**The European Commission  
European Committee of the  
Regions  
European Economic and  
Social Committee**



**have formulated  
recommendations referring  
to CPS directly or indirectly**



## **DG REGIO & ESPON**

**Cross-Border Public Services  
(joint coordination), 2022**

## **DG REGIO**

**Providing public transport in  
cross-border regions. Mapping of  
existing services and related legal  
obstacles, 2021**

## **DG SANTE**

**Cross-Border Cooperation -  
Capitalising on existing initiatives  
for cooperation in cross-border  
regions, 2018**

## **ESPON**

**Cross-border Public services,  
2018**



# ESPON CPS2.0 study



European-wide



Research Team led by Spatial Foresight GmbH, and joined by AEBR, MOT and TCP International



Completed : June 2022



Coordinated with the EC/ DG Regio project **“CROSS-BORDER PUBLIC SERVICES”** (2020CE160AT084)

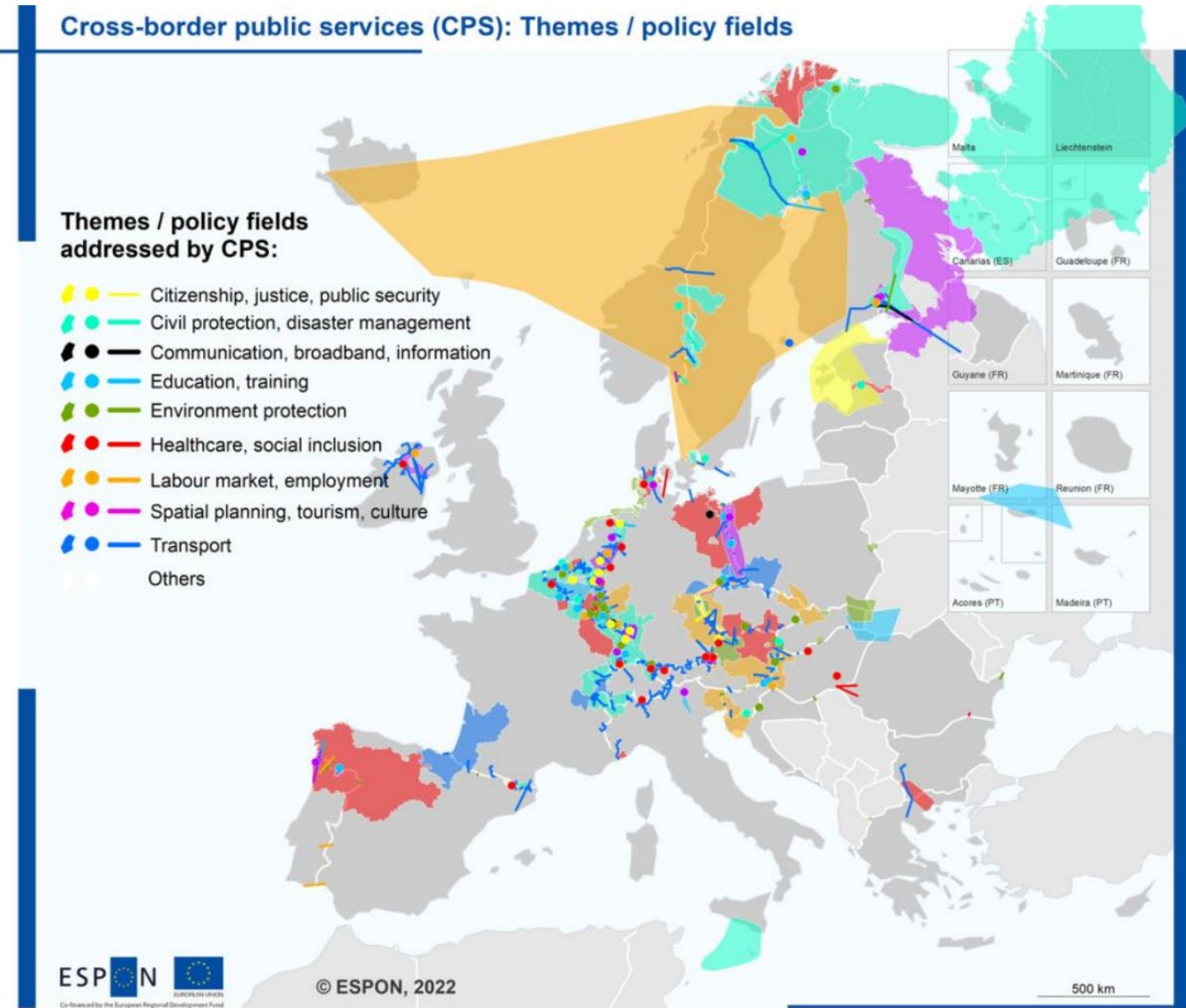
## Cross-border public services (CPS): Themes / policy fields

### Themes / policy fields addressed by CPS:

- Citizenship, justice, public security
- Civil protection, disaster management
- Communication, broadband, information
- Education, training
- Environment protection
- Healthcare, social inclusion
- Labour market, employment
- Spatial planning, tourism, culture
- Transport
- Others



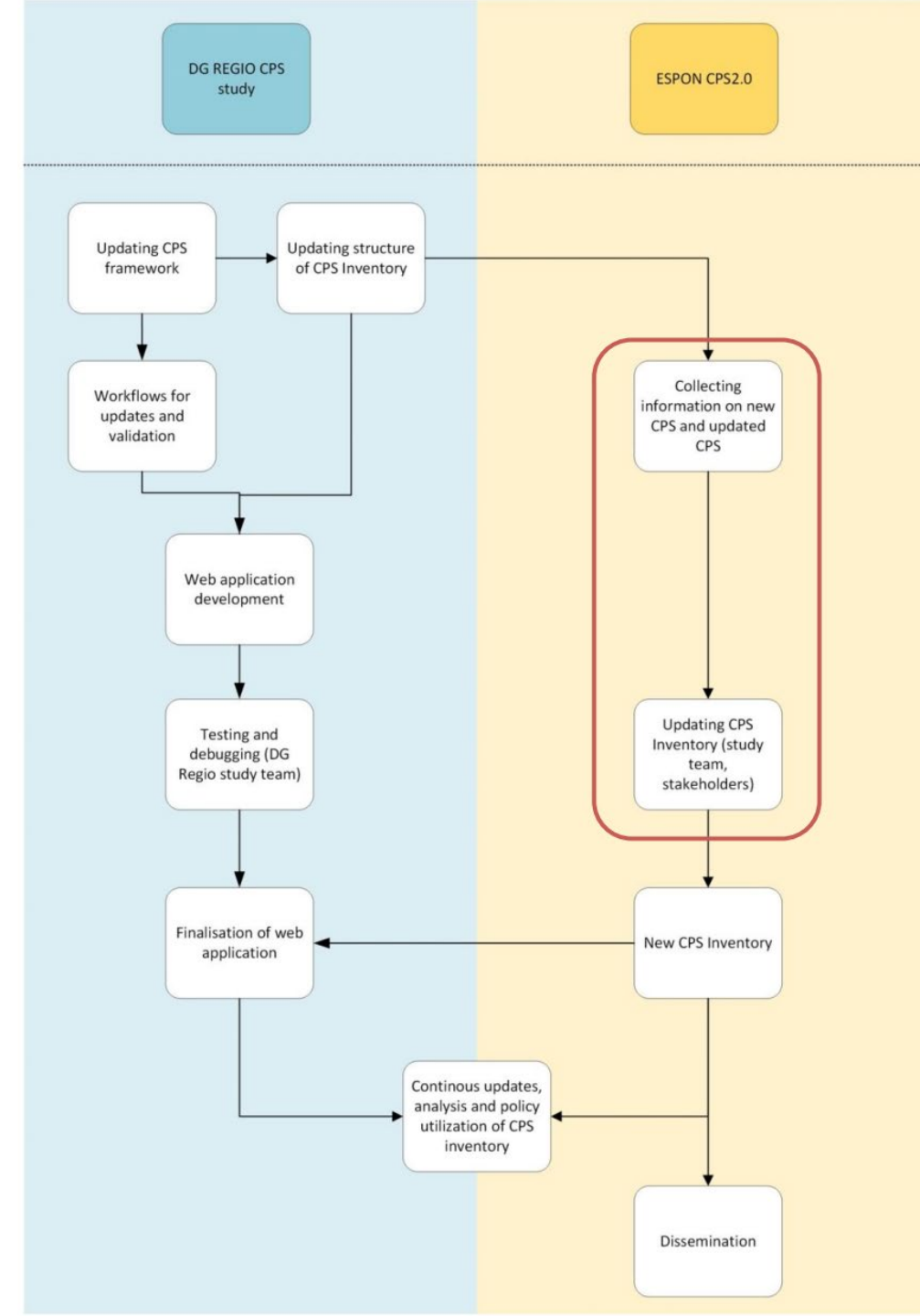
© ESPON, 2022



# ESPON CPS 2.0

**ESPON CPS - Cross-border Public Services (2021)**  
– a continuous effort in creating an integrated,  
complete database at EU level

- Stabilize definitions and reach a common understanding of CPS with all stakeholders
- Validate the conceptual and methodological framework for analysing and collecting data on cross-border public services
- Update and upgrade the inventory on CPS provision for both internal and external borders across the EU**
- Raise awareness and involve partners in keeping the CPS inventory up to date







Co-financed by the European Regional Development Fund

Inspire Policy Making with Territorial Evidence

espon.eu   

# Thank you for your attention!

Andreea China, ESPON EGTC

// [andreea.china@espon.eu](mailto:andreea.china@espon.eu)



Co-financed by the European Regional Development Fund

Inspire Policy Making with Territorial Evidence

# Cross-border Public Services 2.0 (CPS 2.0)

Vaasa – Dissemination event

16 June 2022

ESPON CPS (2018)

**ESPON CPS 2.0 (2022)**

- Data collection
- Dissemination

Updated, extended & sustainable CPS inventory

**DG Regio CPS (2022)**

- CPS concept
- In-depth analysis
- Web Application

# Illustrative examples



1 [https://ka.stadtwiki.net/Datei:2016-10-16\\_Rhein%C3%A4hre\\_Greffern\\_01.JPG](https://ka.stadtwiki.net/Datei:2016-10-16_Rhein%C3%A4hre_Greffern_01.JPG)

2 author Ragnar Vutt

3 Språkskolan Tornio-Haparanda, 2017

4 <https://www.cc-genevois.fr/fr/vie-pratique-et-services/vos-droits/les-services-de-la-mtj>

5 <https://www.schwarzwaelder-bote.de/inhalt.ortenaukreis-eine-gezielte-zuwanderung-ist-unerlaesslich.3e0dd5e8-68dc-48f8-987c-85f80effd0ca.html>

6 Geopark Karawanken, [www.geopark-karawanken.at](http://www.geopark-karawanken.at)

7 [www.efiduero.com](http://www.efiduero.com)

# Added value for border regions

## CPS enhance functionality in border areas by

- ... contributing to **better connections**
- ... supporting **cross-border flows** of people
- ... creating (thematic) **functional areas**
- ... addressing **gaps** in **domestic service provision**
- ... making service provision less costly and raise its **efficiency**, thereby helping to maintain services in border areas with low population densities
- ... contributing to raise **awareness** of **cross-border possibilities** (e.g. in terms of work and labour markets, health care, recreation, education, technical infrastructures etc.)
- ... **sustaining Interreg projects**

... reducing negative effects of border for border area & citizens

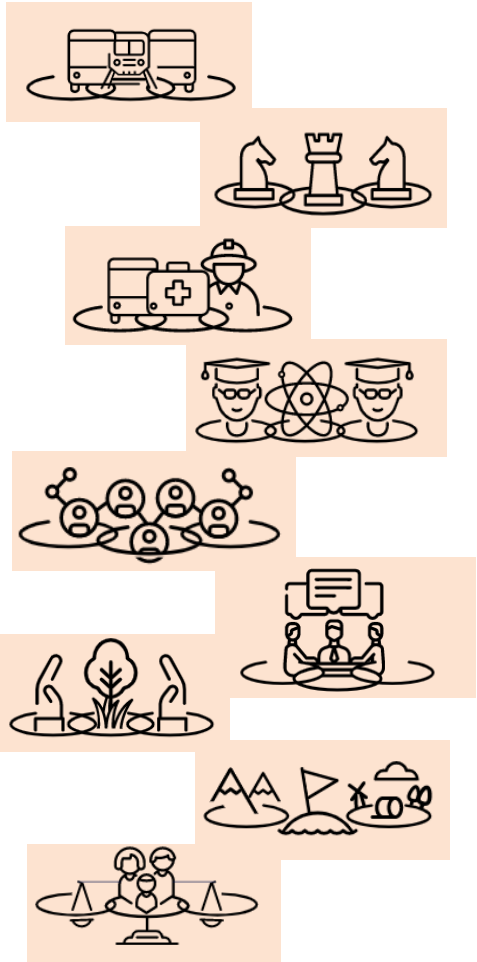


Contribution to **cohesion** beyond border areas in EU MS

# What are Cross-border Public Services?

Any CPS across any of nine policy areas...

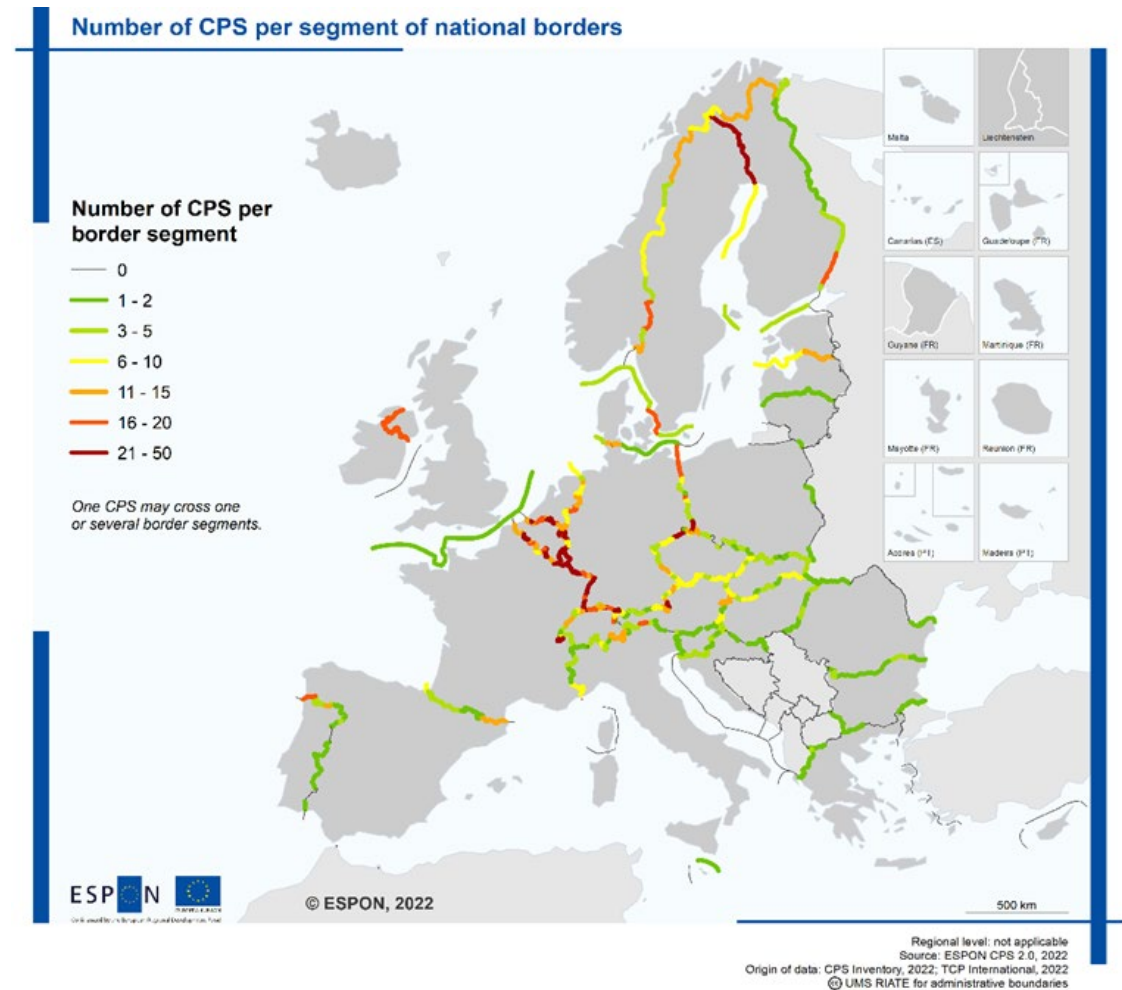
- ... is **publicly organised** and delivered either directly or via a concession
  - ... is **publicly (co-)financed**
  - ... is materialised in a specified **cross-border area**
  - ... addresses a **shared problem** or **development opportunity** in the CBC area
  - ... may **use** existing or newly established infrastructure (hard, soft or green)
- 
- ... has a **target group** on both sides of the border
  - ... is **non-discriminatory** to access
  - ... includes **actors** from both sides of the border
  - ... is **not limited** to a specific **timeframe** (i.e. not a “one-off project”).





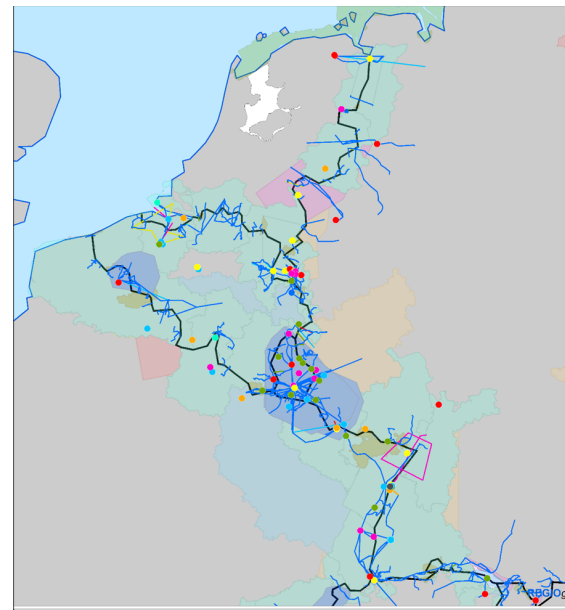
# Some new findings

- ~ 1550 CPS (as of May 2022)
- Density is the highest around the Benelux / France-German / Finland-Sweden & a few local spots
- New CPS identified in other parts of Europe – CEE & southern Europe
- Only few border segments of internal EU borders without any CPS
- Potentials of CPS are not yet equally used



# Some new findings

- Some borders have CPS in only 1 or 2 policy areas, e.g.
  - Civil protection & disaster management in Nordic countries
- Environmental protection incl. sewage water treatment at CZ-DE and AT-DE borders
- Border areas with many CPS have often services in several policy areas



**CPS provision in West European Countries: Policy areas addressed**

Note: Only active CPS are shown. Planned, temporarily closed or ceased services are not illustrated.

Geographically, the provision of a CPS can be punctual (e.g. school), linear (e.g. bus line) or areal (e.g. nature park), which is reflected accordingly in the map by point, line and polygon features. Lines may furthermore represent CPS which are bilaterally provided (i.e. at two locations); similarly, polygons may also represent CPS which are provided in multilateral networks at three or more locations. Points are shown disproportionately on the map to improve their visibility.

Source: CPS Inventory, 2022

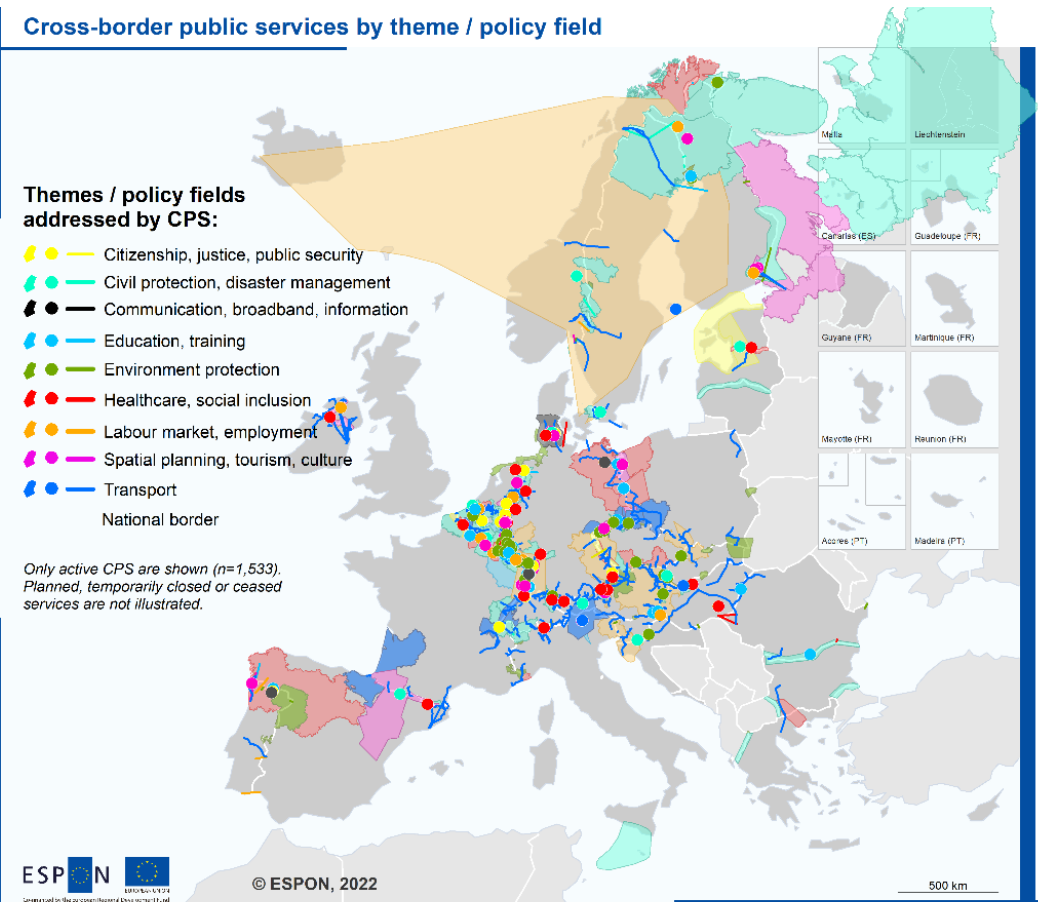
© EuroGeographics Association for the administrative boundaries

## Cross-border public services by theme / policy field

### Themes / policy fields addressed by CPS:

- Citizenship, justice, public security
- Civil protection, disaster management
- Communication, broadband, information
- Education, training
- Environment protection
- Healthcare, social inclusion
- Labour market, employment
- Spatial planning, tourism, culture
- Transport
- National border

Only active CPS are shown (n=1,533). Planned, temporarily closed or ceased services are not illustrated.



ESPON  
European Commission

© ESPON, 2022

500 km

Regional level: NUTS 0  
Source: ESPON CPS 2.0, 2022  
Origin of data: CPS Inventory, 2022; TCP International, 2022  
© UMS RIATE for administrative boundaries

# Some new findings

Many different attributes for analyses by...

- spatial coverage
- geographical specificities along the border
- governance models for CPS provision
- legal framework for CPS implementation
- model of user payment
- public transport permeability
- status of operation
- language similarities
- groups of obstacles
- ...

## CPS and border areas

### CPS within 25 and 50 km border areas

- CPS within 25 km border area
  - CPS within 50 km border area
  - CPS beyond 50 km border area
- National border

*Only active CPS are shown (n= 1,533). Planned, temporarily closed or ceased services are not illustrated.*

*The assignment is based on an assessment of the location of the major parts of the service area of a CPS. Thus, parts of the service area can also lie outside the specified border areas.*

### Cross-border public services (CPS): Governance model

- #### Governance model of CPS
- Central with legal personality interstate agreement / EU law

### Cross-border public services (CPS): Legal frameworks

#### Legal frameworks of CPS

- Secondary EU legislation
- Multilateral interstate agreement
- Theme-specific interstate agreement
- Regional cooperation agreement
- Regional cooperation agreement in connection with multilateral interstate agreement
- Regional cooperation agreement in connection with theme-specific interstate agreement
- Harmonised national rules

*Only CPS for which information is available are shown (n=352).*



Co-financed by the European Regional Development Fund

Inspire Policy Making with Territorial Evidence

# // Thank you

Sabine Zillmer & Sandra Spüle, Spatial Foresight