

ESPON:

Territorial evidence of rural development and change in Nordic Countries

Anna Vasilevskaya, GIS analyst



21st April 2022

Nordregio

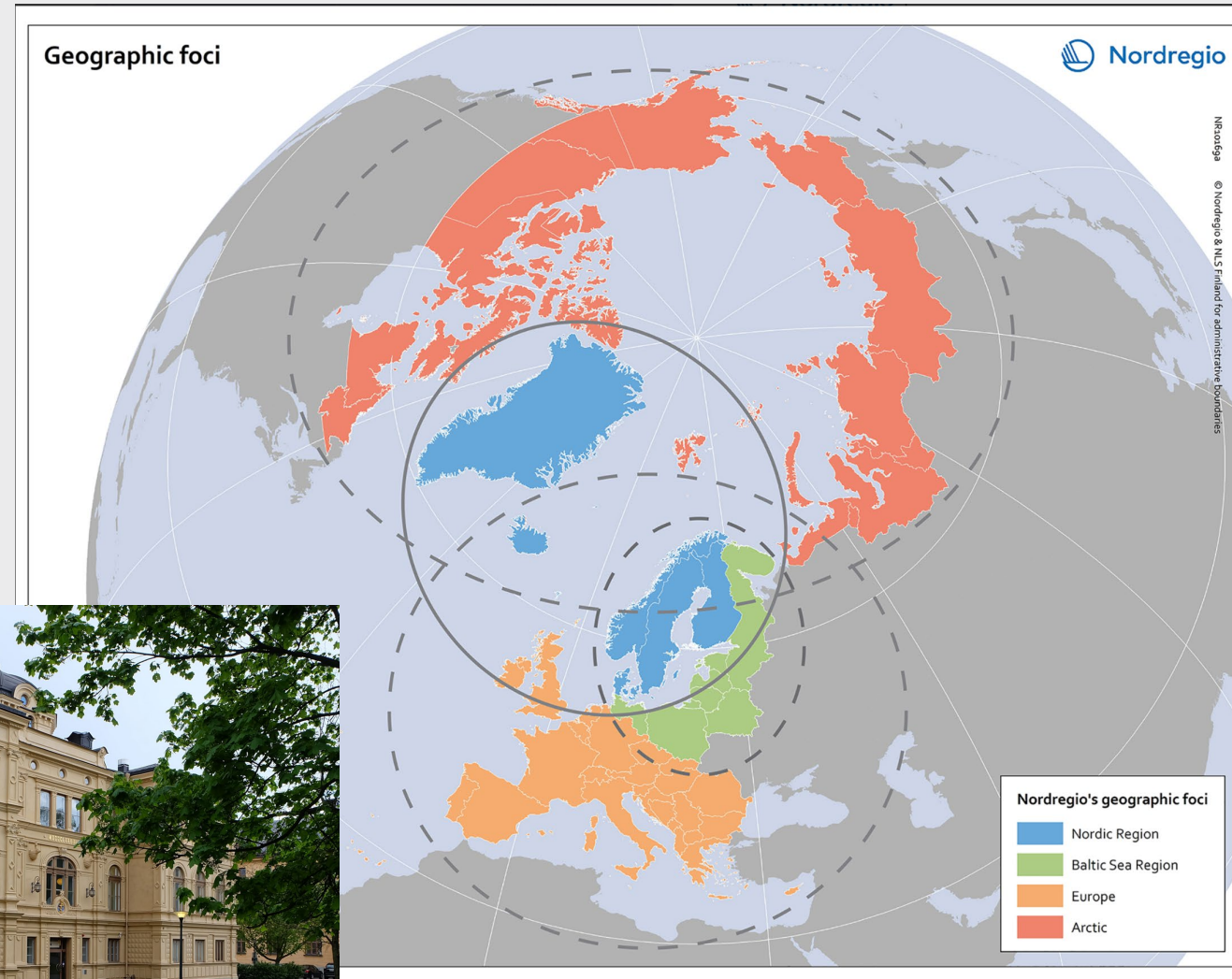
Nordic research institute

Ca 45 employees

- Regional Development
- Rural Development
- Urban Planning
- Demography
- Governance

- mapping and GIS analysis
- communications and outreach

<https://nordregio.org/>

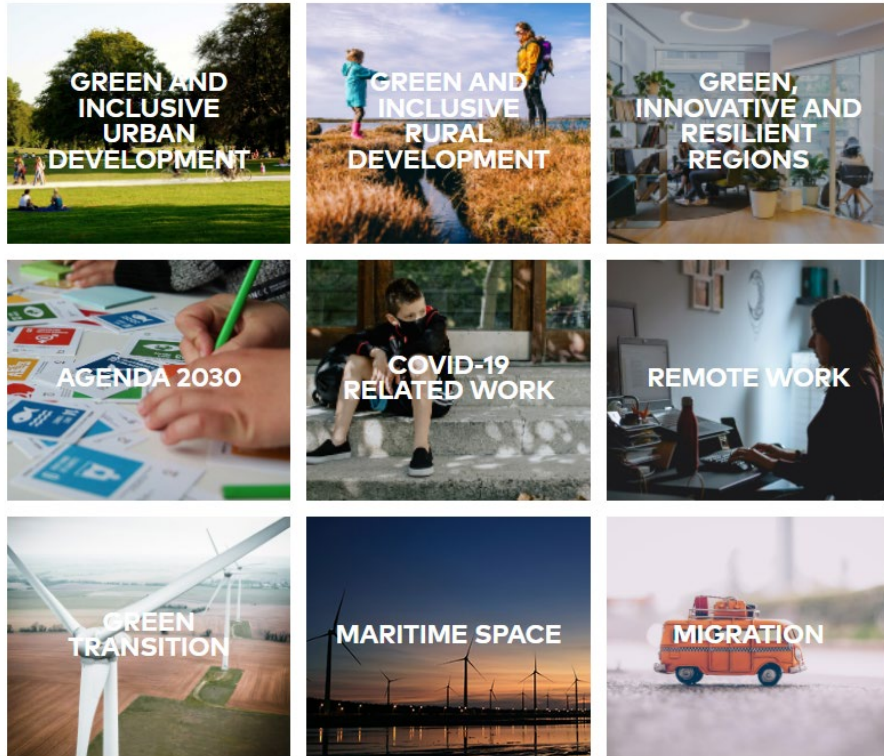


Nordregio's webpage

WELCOME TO NORDREGIO

Nordregio is an international research centre for regional development and planning. Read more about our latest research topics, news and publications

About Nordregio



Search within publications... GEOGRAPHY THEME TYPE



Public service delivery in the Nordic Region: A governance

Nordic welfare states are world renowned for providing high quality authorities, in particular, play a central role in the delivery of key p

2021 February Report Cross-border Nordic Region



Regional tourism satellite accounts for the Nordic Countries

Tourism has played a growing role in the last two decades in the Nordic region until the Covid-19 pandemic hit and the tourism sector suffered from restrictions. After relief, tourist influx will resurrect and again affect

2021 January Report Nordic Region Covid-19

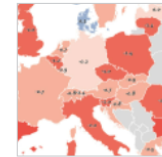


The Nordic Thematic Group for Innovative and Resilient Regions 2017-2020 - final report

This report summarises the work and results of the Nordic thematic

<https://nordregio.org/maps/>

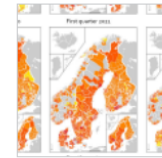
Search within maps... GEOGRAPHY THEME



Change in life expectancy 2019-2020 by country in Europe

The excess mortality has affected overall life expectancy at birth across Europe. In 2019, prior to the pandemic, Spain, Switzerland, and Italy had the highest life expectancy in Europe, followed by Sweden, Iceland, France, and Norway. Finland and Denmark had slightly lower levels but were above the EU average (Eurostat, 2021). Life expectancy across the EU as a whole and in near

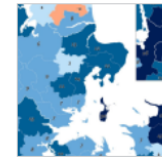
2022 March Demography Europe



Work mobility per municipality and region by quarter

The map shows the percentage change for work mobility in Nordic regions and municipalities compared to a pre-pandemic baseline. The maps compare Nordic mobility patterns in each quarter of 2021 with a pre-pandemic baseline. Based on Google data, the panels illustrate the impact of national restrictions and how those restrictions hampered work mobility. As the restrictions were both

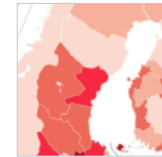
2022 March Labour force Nordic Region Transport



Price development for Danish single-family homes

The map shows the relative change in single-family house prices from fourth quarter 2019 and second and third quarter of 2021 for Danish municipalities. The map shows that most municipalities experienced high price increases during this period, but the extent to which this more pronounced differs between municipalities. The increases are highest in the Copenhagen

2022 March Denmark Economy



Gross Value Added (GVA) change 2019-2020

The map shows the change in regional Gross Value Added (GVA) from 2019 to 2020 (in fixed prices). The map shows the change in regional aggregated production levels, in terms of Gross Value Added (GVA), contrasted with all of the Nordic regions between 2019 and 2020. In general, the variability was comparatively higher within each country than it was between countries, even when comparing regions with similar

2022 March Economy Nordic Region

Agenda

- Territorial evidence on rural development and change in Nordic countries
- Norway's relative position within this context

Projects

1. State of the Nordic Region (**SoNR**) (latest: 2020 and 2022)
2. **Nordic service mapper** and **NordMap**
3. **Sherpa**: Sustainable hub to engage into rural areas with actors
4. **Rural services** : Essential rural services in the Nordic Region – Challenges and opportunities
5. **Rural attractiveness**: Attractive Rural Municipalities in the Nordic countries
6. **Population change** dynamics in Nordics
7. **Multilocality**: *Rural and regional impacts of remote work and multilocality*

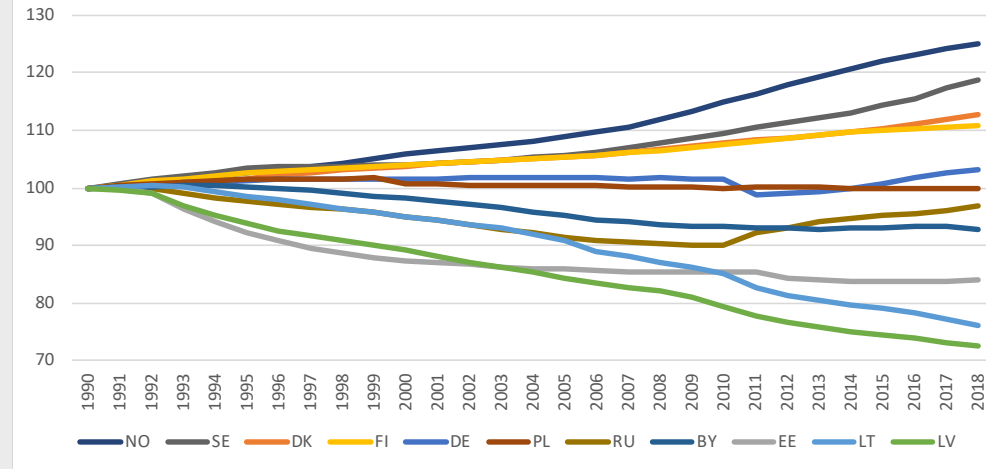
And more on the web page : <https://nordregio.org/>

Nordics

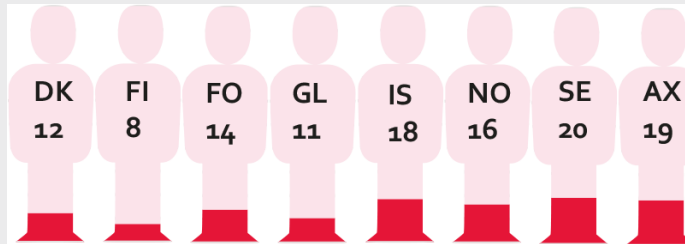
- The Nordic population is growing
- Varied countries of origin of the immigrants
- A larger number of population is born in foreign countries
- Aging population
- Immigration unevenly divided between the regions
- Regional differences in socio-economics
- Differences between international and domestic migration



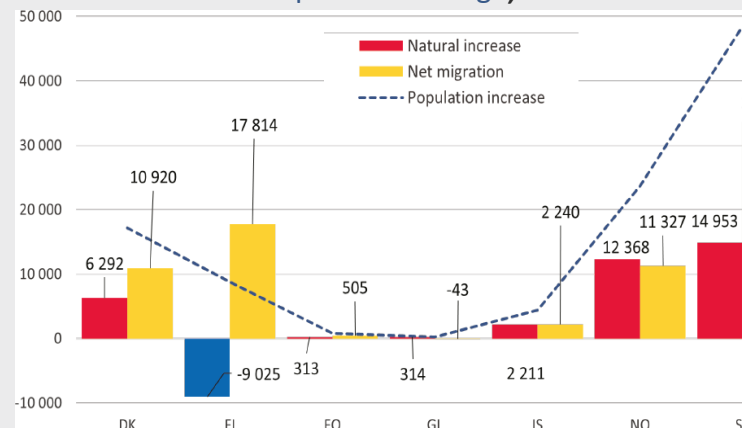
Population change in the BSR 1990-2018, index: 1990 = 100



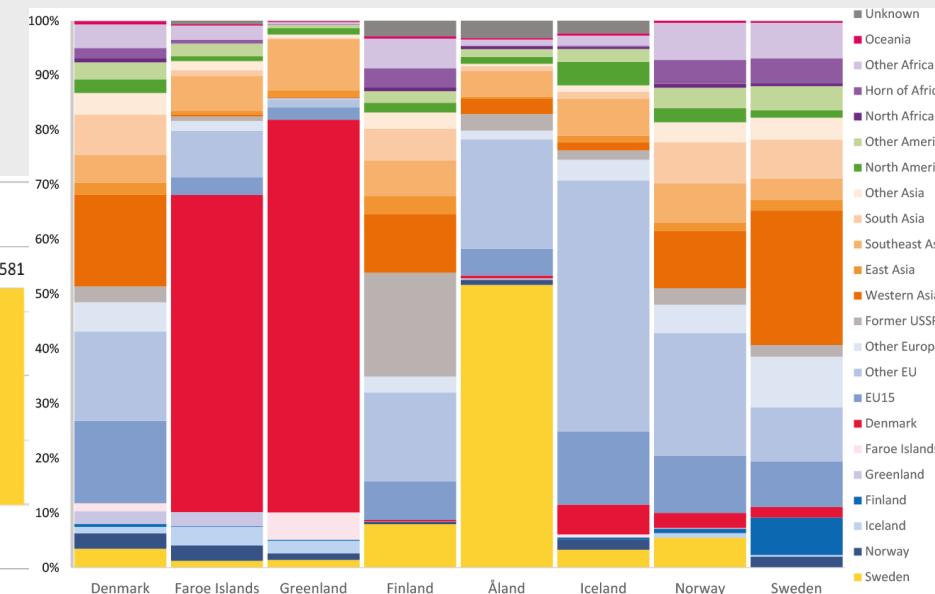
Foreign-born % of the total population, 2021



Population change, 2020



Foreign-born population 1 January by reporting country, 2021



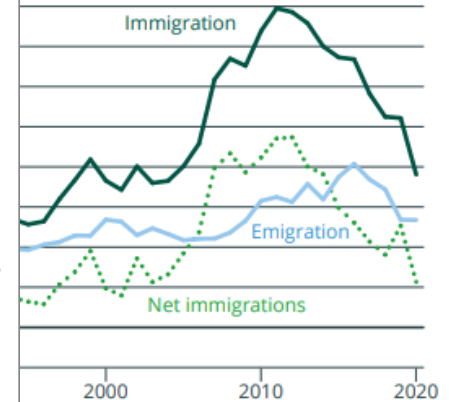
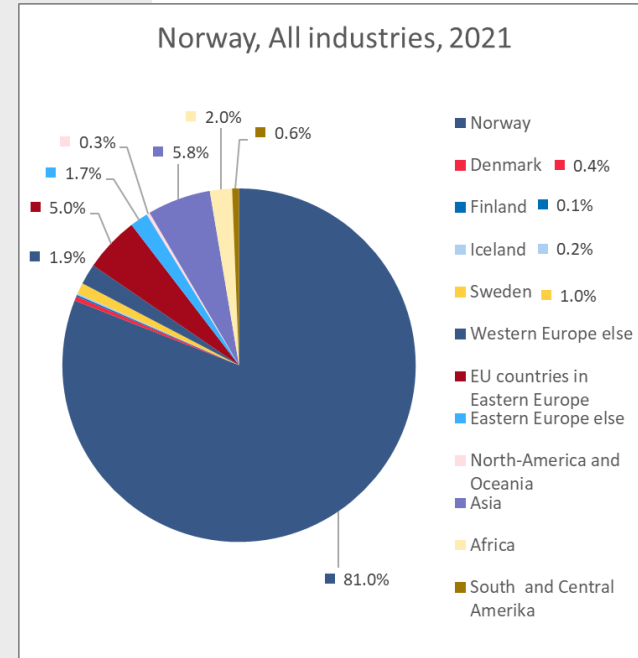
Norway



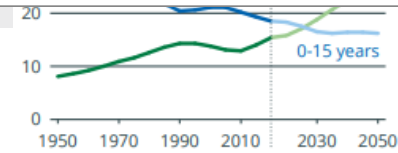
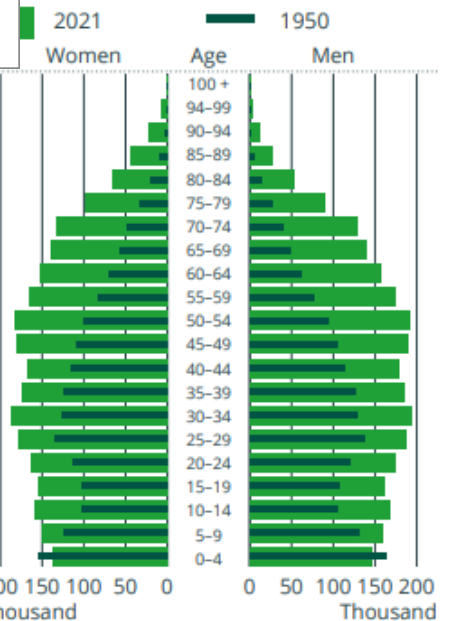
- Geographical peculiarities
- Population ca 5,4 mil
- Decline in population growth
- Work is the main reason for immigration
- Most people live in the city (82%) with 44 % in the Oslo Fjord region; 9% in the Northern Norway
- The ageing population: more prevalent in rural areas

Decline in population growth

The figure shows immigration, emigration and net immigration

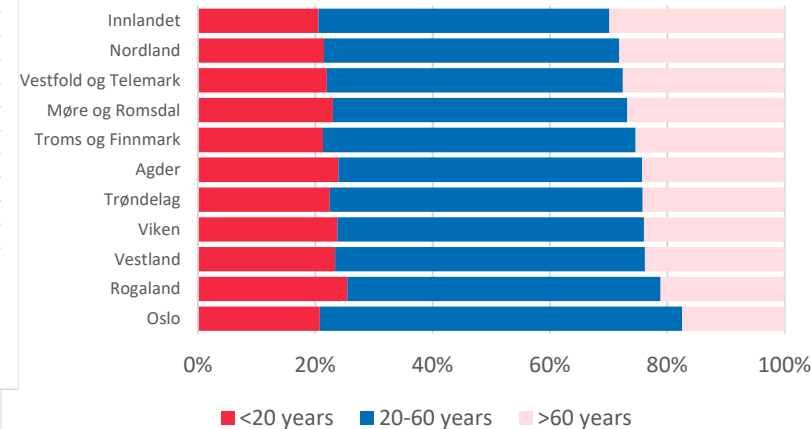


Distribution in the population by age and gender

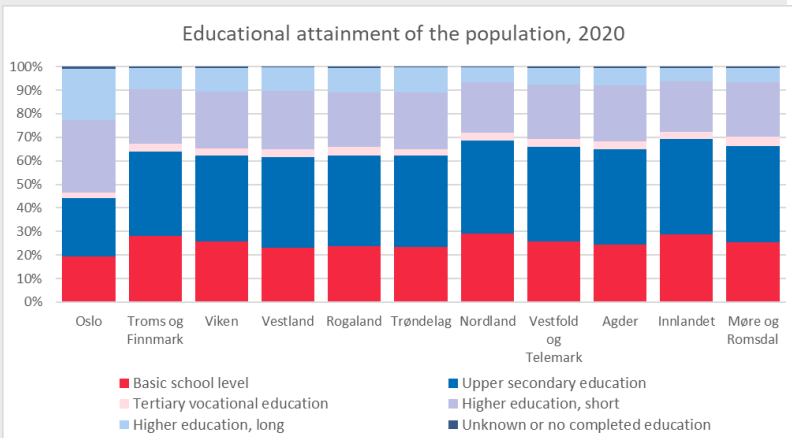


Source: ssb.no/en/folkemengde and ssb.no/en/folkfram (main alternative)

Population, by age, region, 2022



<https://www.ssb.no/en/befolkning/folketall/artikler/this-is-norway-2021>

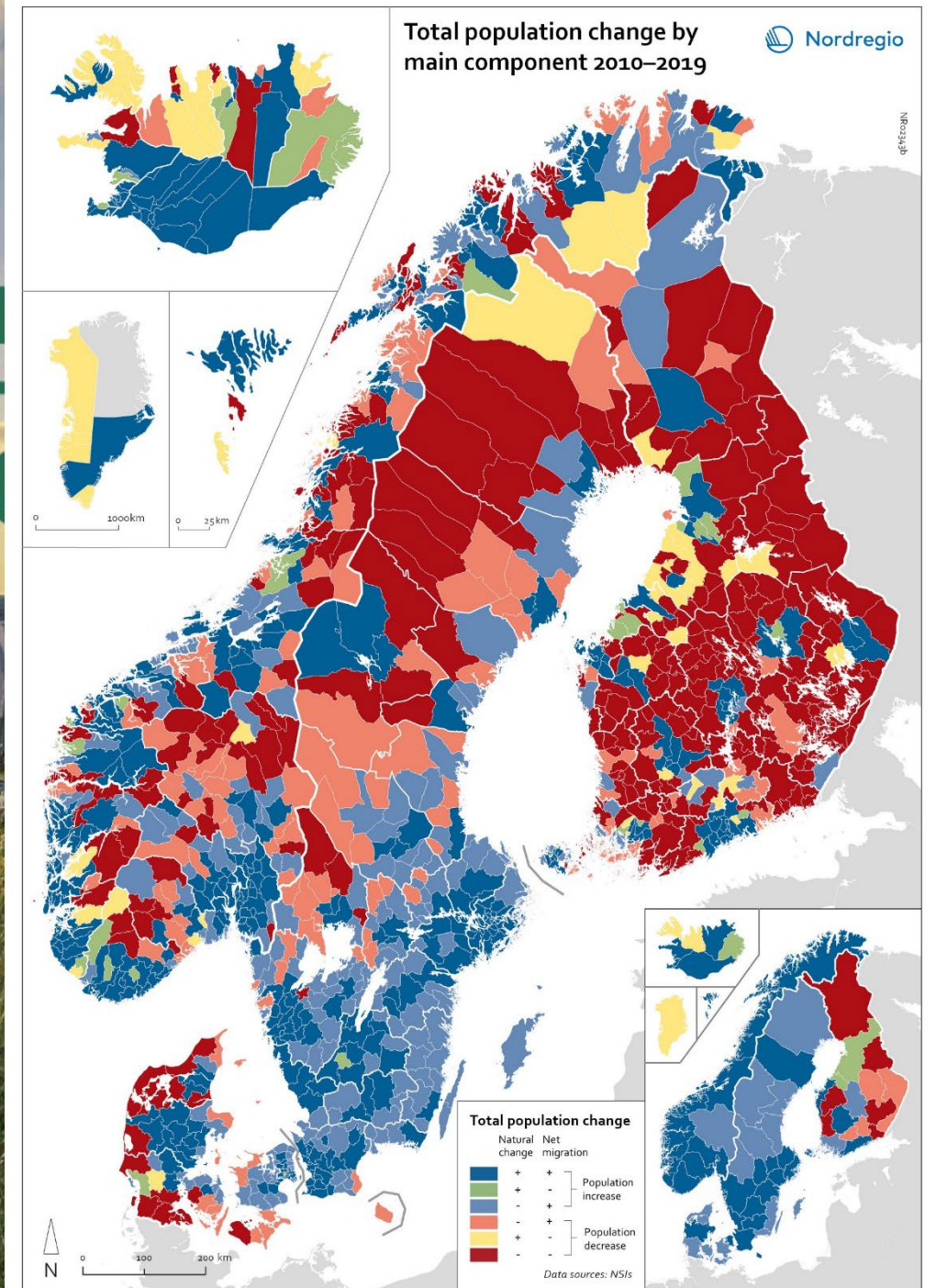


1. State of the Nordic Region

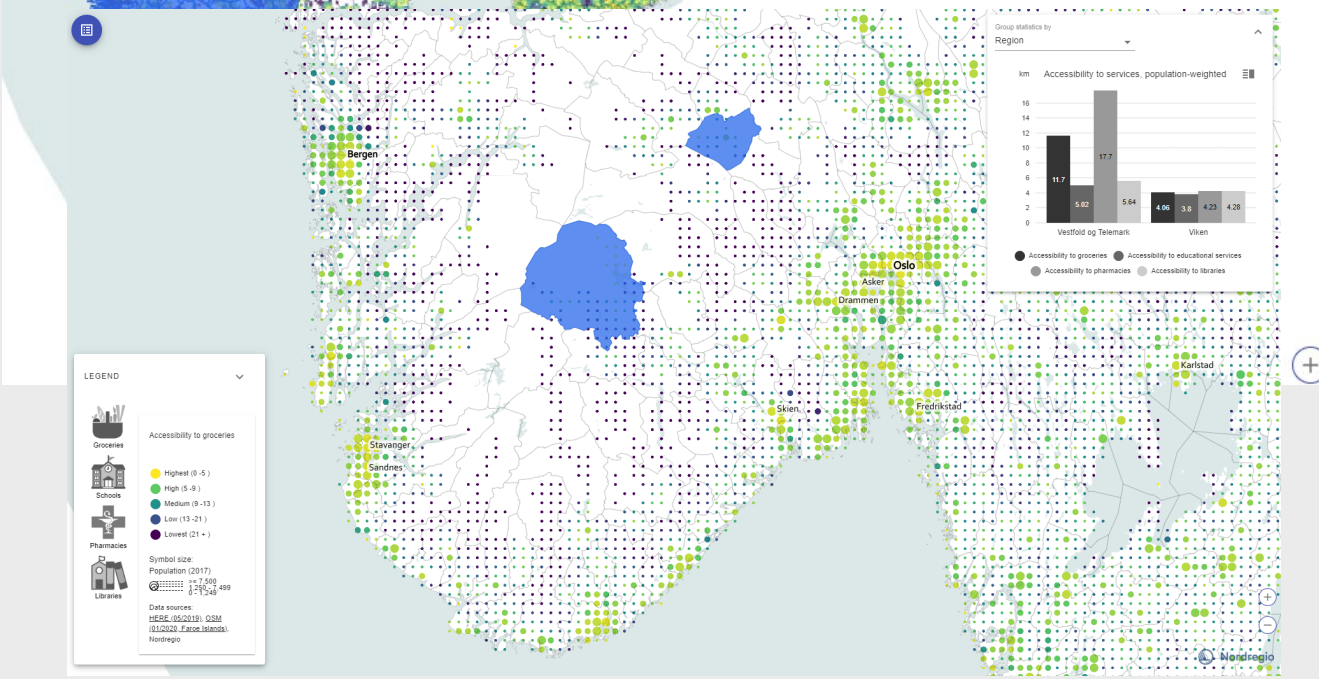
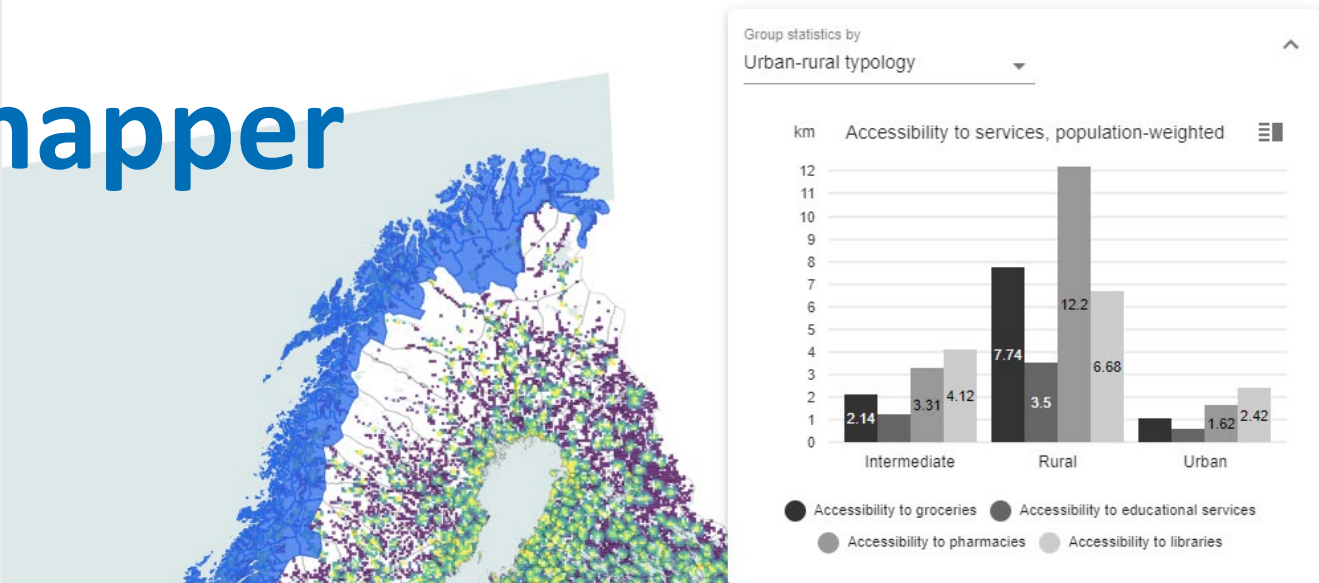
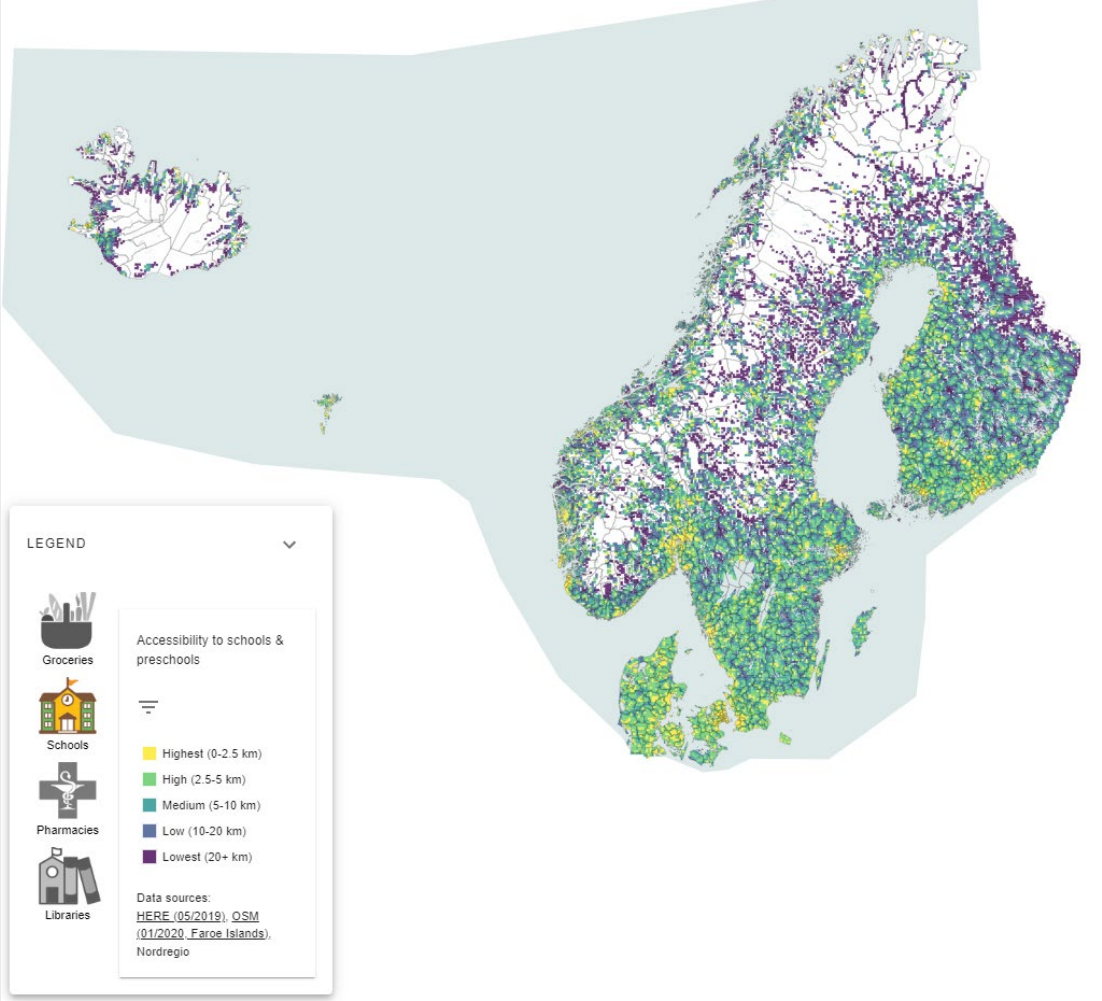
- The State of the Nordic Region presents a collection of maps, figures and analysis within three core areas: demography, labour market, and economy.
- Published every second year

SoNR 2022: <https://nordregio.org/publications/snr22/>

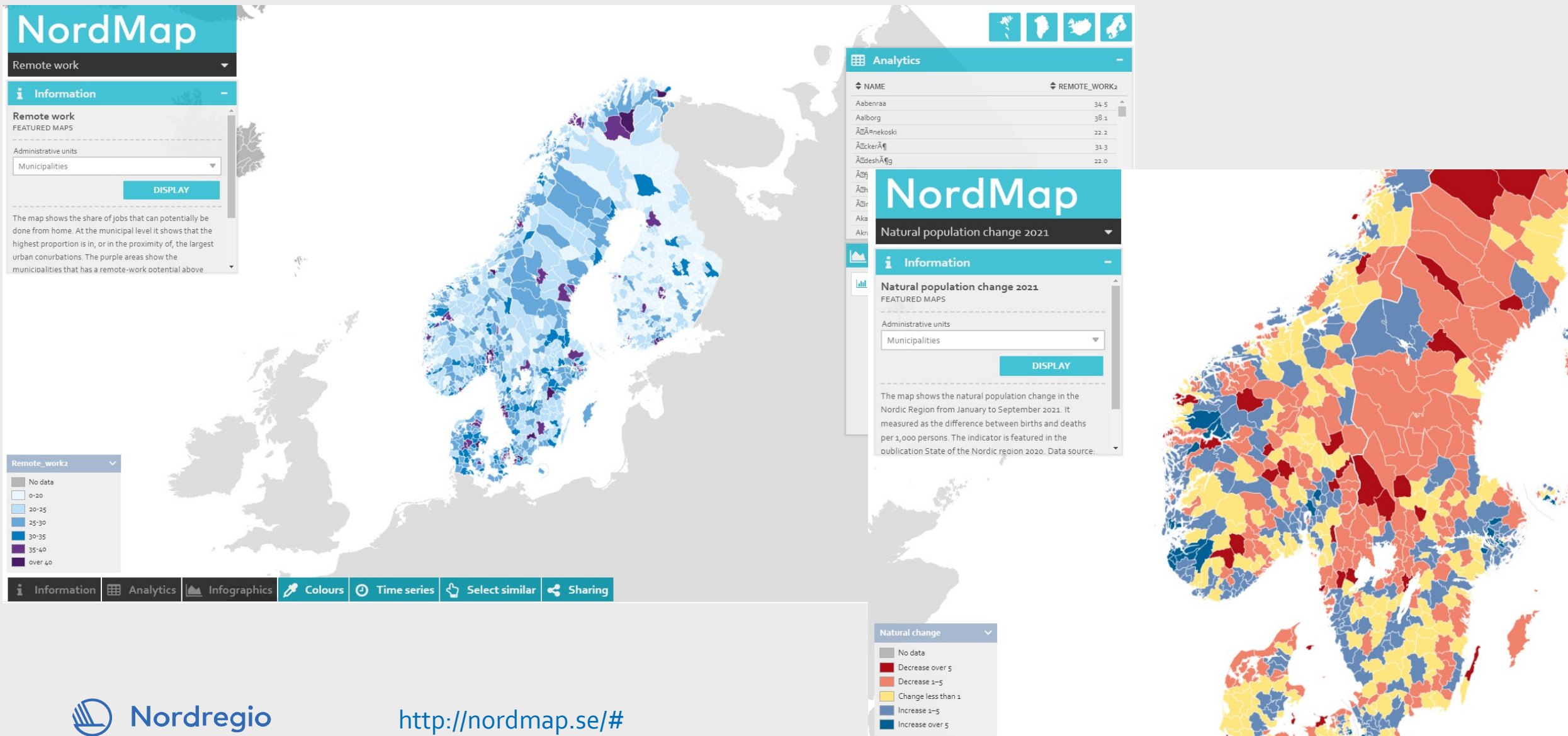
SoNR 2020: <https://nordregio.org/publications/state-of-the-nordic-region-2020/>



2.2. Nordic service mapper



2.1. NordMap

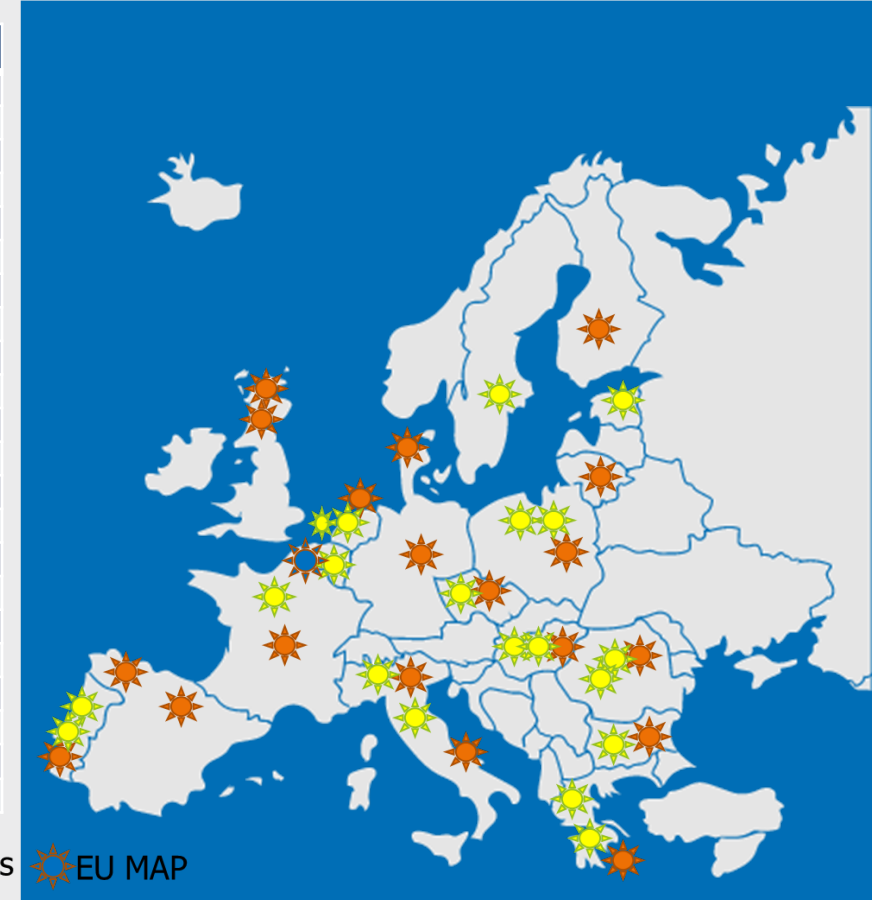


3. Sherpa: Sustainable hub to engage into rural areas with actors

- **Multi-Actor Platforms (MAPs)**
- 40 regional MAPs and 1 EU-level MAP
- **science-society-policy** interface which provides a hub for knowledge and policy
- **Topics:**
 1. Change in production and diversification of the economy
 2. Climate change and environmental services
 3. Vision – second phase

Country	Partner	Phase 1	Phase 2
Belgium	ECR	0	1
Bulgaria	ERDN	1	2
Czech Republic	ERDN	1	2
Denmark	NR	1	1
Estonia	NR	0	1
Finland	NR	1	1
France	CI	1	2
Germany	TI	1	1
Greece	AUA	1	3
Hungary	ERDN	1	3
Italy	UNIPI/UNIBO	2	4
Lithuania	ERDN	1	1
Netherlands	WR	1	3
Poland	ERDN	1	3
Portugal	Consulai	1	3
Romania	ERDN	1	3
Slovenia	UL	1	1
Spain	USC	1	1
Spain	UPM	1	1
Sweden	NR	0	1
United Kingdom	HUT	2	2
		20	40

★ 1st Phase MAPs
 ★ 2nd Phase MAPs
 ★ EU MAP

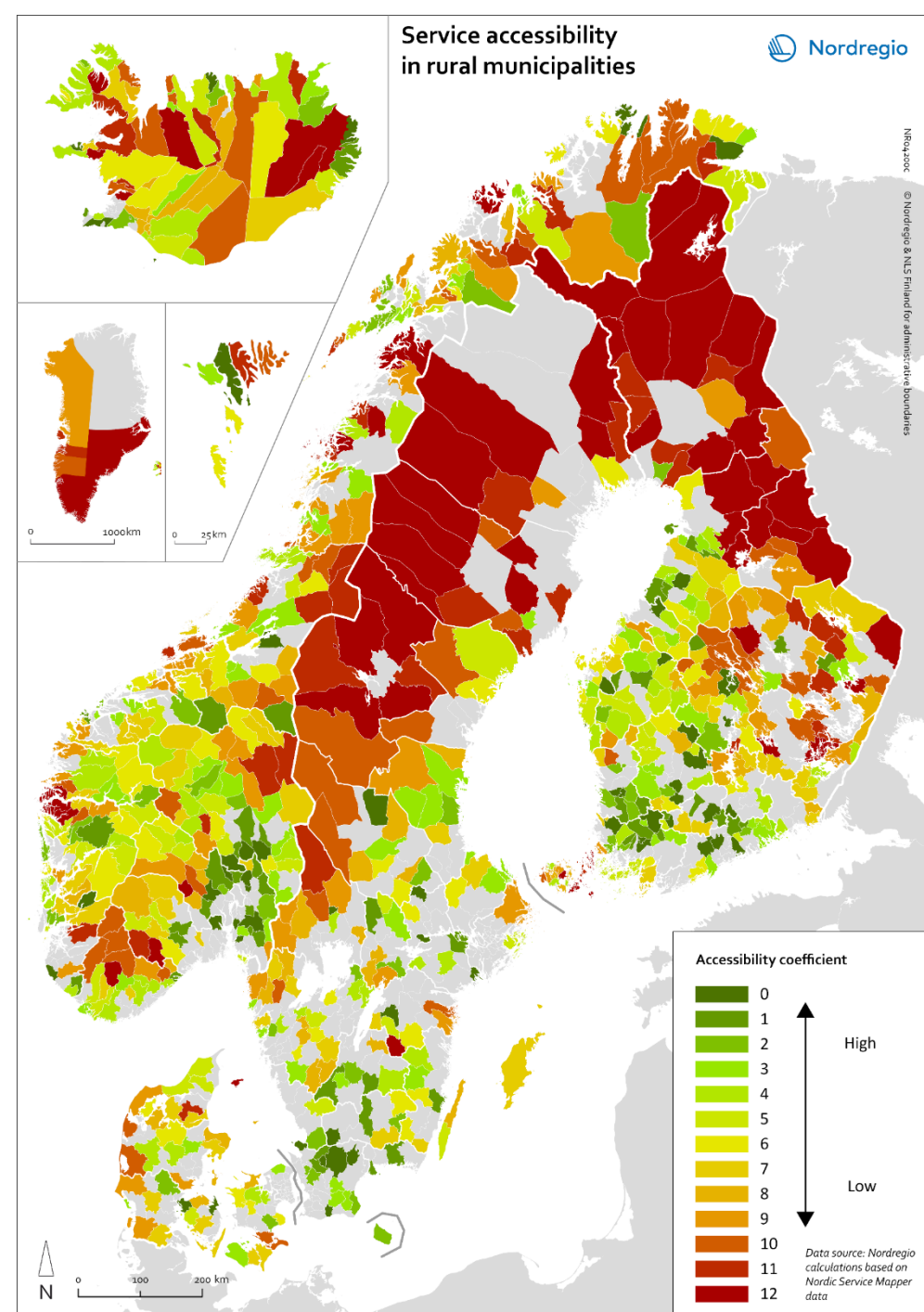


<https://rural-interfaces.eu/>

4. Essential rural services in the Nordic Region

- Commissioned by the Nordic thematic group of green and inclusive rural development
- a part of the project “Service provision and access to services in Nordic rural areas – secure, trusted and for all ages”
- Analyze how essential service needs for different types of societal groups and ruralities can be understood and defined, and how solutions to rural service provision challenges can be organized

<https://nordregio.org/publications/essential-rural-services-in-the-nordic-region-challenges-and-opportunities/>



5. Rural attractiveness

Nordic Cooperation Programme for Regional Development

Population analyses

Shift-share job analyses

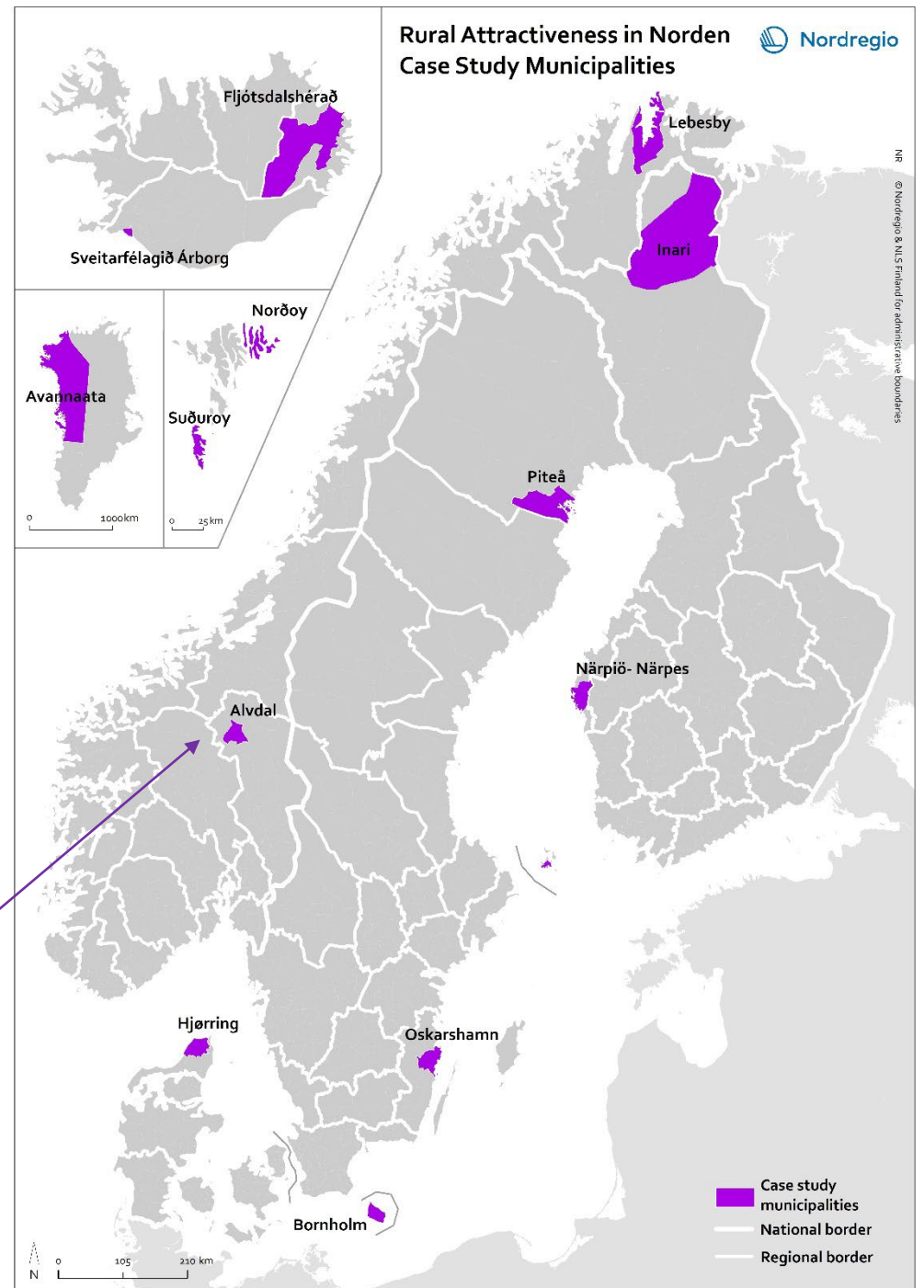
Case-studies

Story maps

Municipal differences within **jobs and migration**

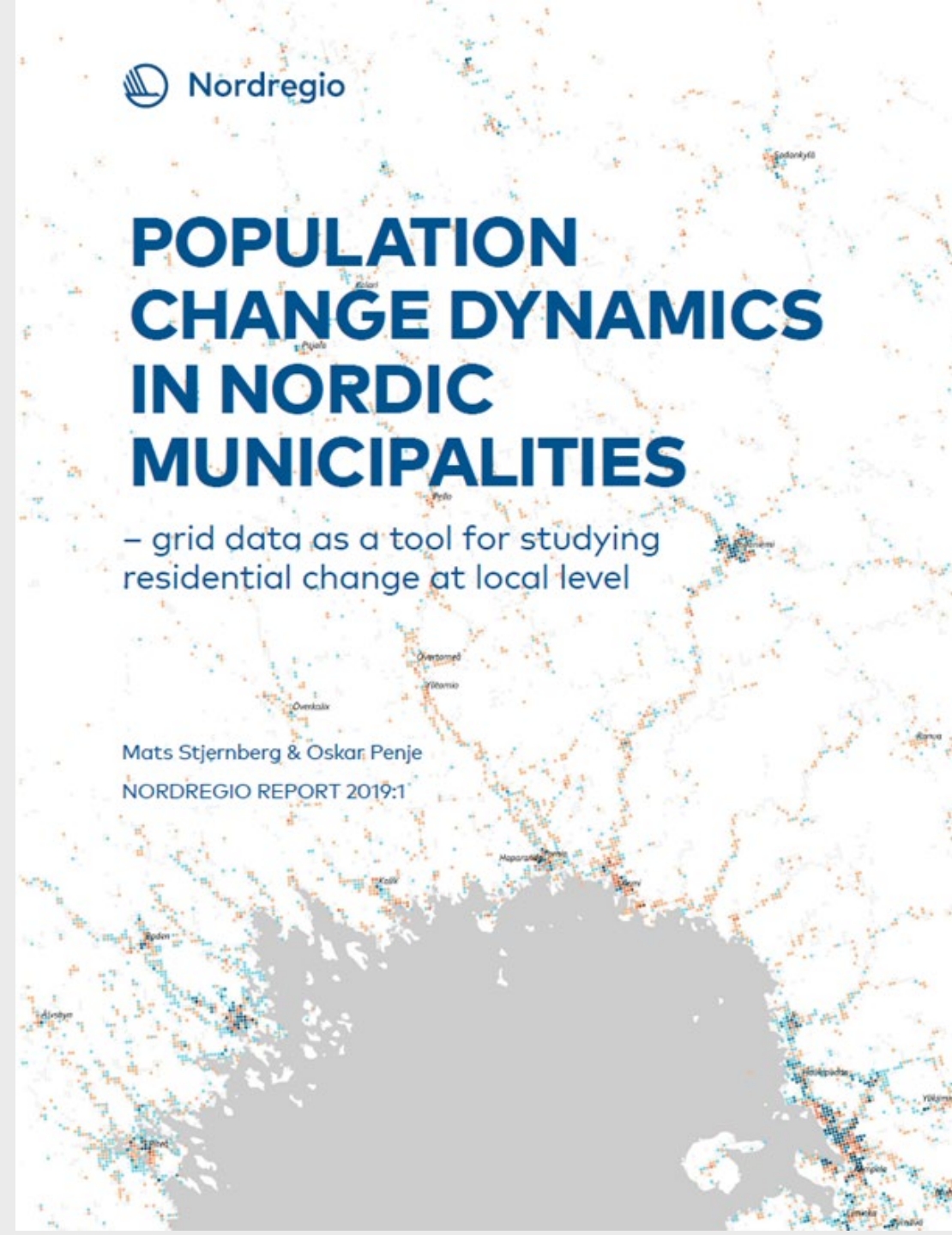
- ✓ Why people move away
- ✓ Why they move to?
- ✓ Why have they always lived there?
- ✓ In particular youth motives

Alvdal municipality in Norway



6. Population change dynamics in Nordics

- Relative change in population size at the municipal level in the Nordic region, 2008–2017
- grid data as a tool for studying residential change at local level
 - Technical considerations with grids and spatial aggregation
 - Data accessibility (age and gender)
 - Data harmonisation



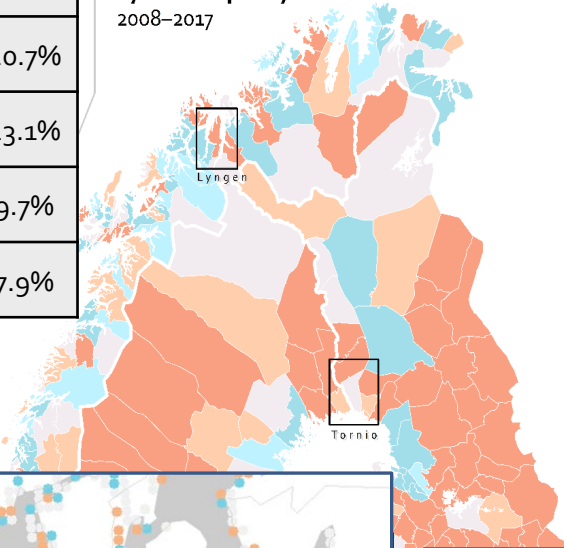
Total population change 2008–2017 in Denmark, Finland, Norway and Sweden

Grid cell size
1,000 x 1,000 meters

	Growing grids (n)	Shrinking grids (n)
Denmark	14 000	20 333
Finland	26 781	46 793
Norway	23 123	23 329
Sweden	52 093	46 867

Population change rate by municipality 2008–2017

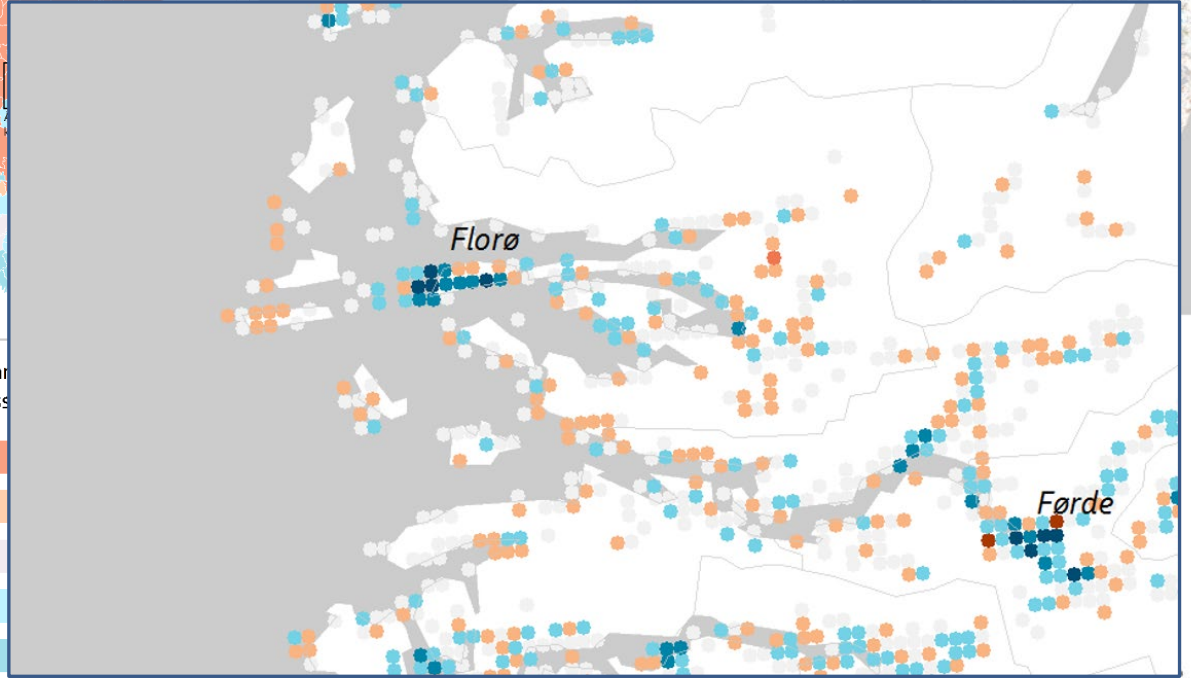
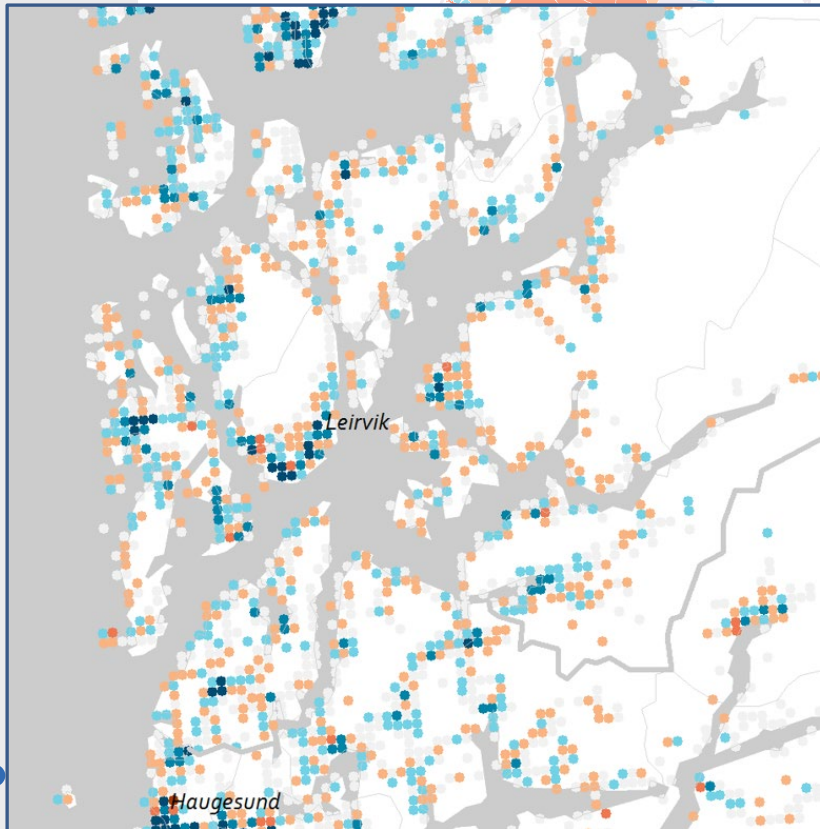
2008–2017



© Nordregio & NLS Finland for administrative boundaries

	Denmark	Finland	Iceland	Norway	Sweden
Significantly growing (pop. increase 5% or more)	32.3%	18.0%	31.1%	46.0%	38.6%
Moderately growing (pop. increase 2–5%)	22.2%	8.0%	6.7%	14.2%	20.7%
Stable (pop. change between -2%–2%)	25.3%	12.9%	18.9%	18.7%	23.1%
Moderately shrinking (pop. decrease between 2–5%)	9.1%	10.9%	16.2%	12.1%	9.7%
Significantly shrinking (pop. decrease 5% or more)	11.1%	50.2%	27.0%	9.0%	7.9%

Case municipality



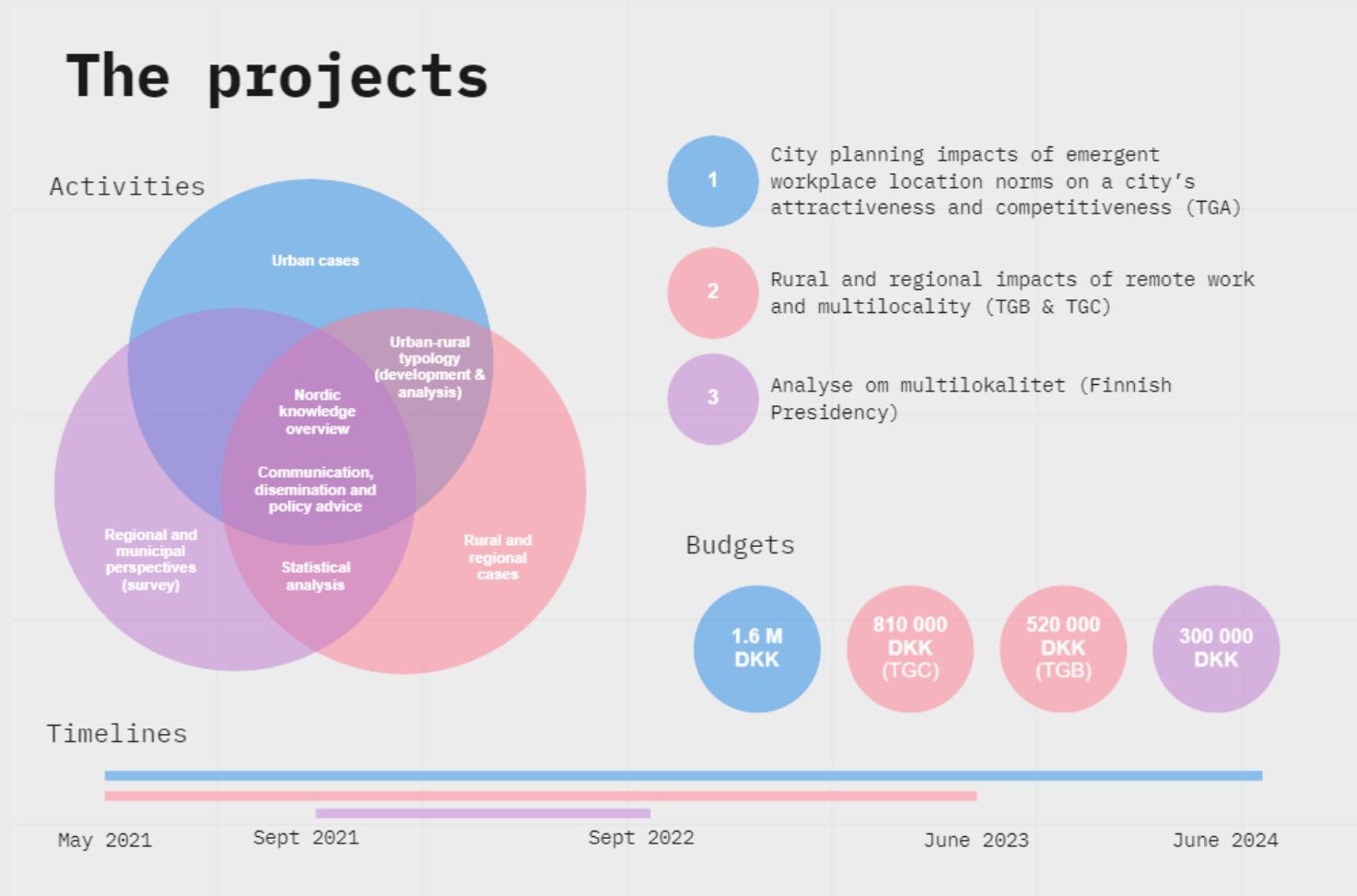
Data source: NSI/Nordregio calculations



Report available at Diva:
Population change dynamics by Nordic municipalities
- Grid data as a tool for studying population change at local level
Stjernberg, M. Petre, O. (2019)

7. Multilocality : *Rural and regional impacts of remote work and multilocality*

- Update urban-rural typology
 - Draft of the **grid-based** urban rural typology map
- Open and free data sources
- Replicable data processing model
- Nordic thresholds and normalisation

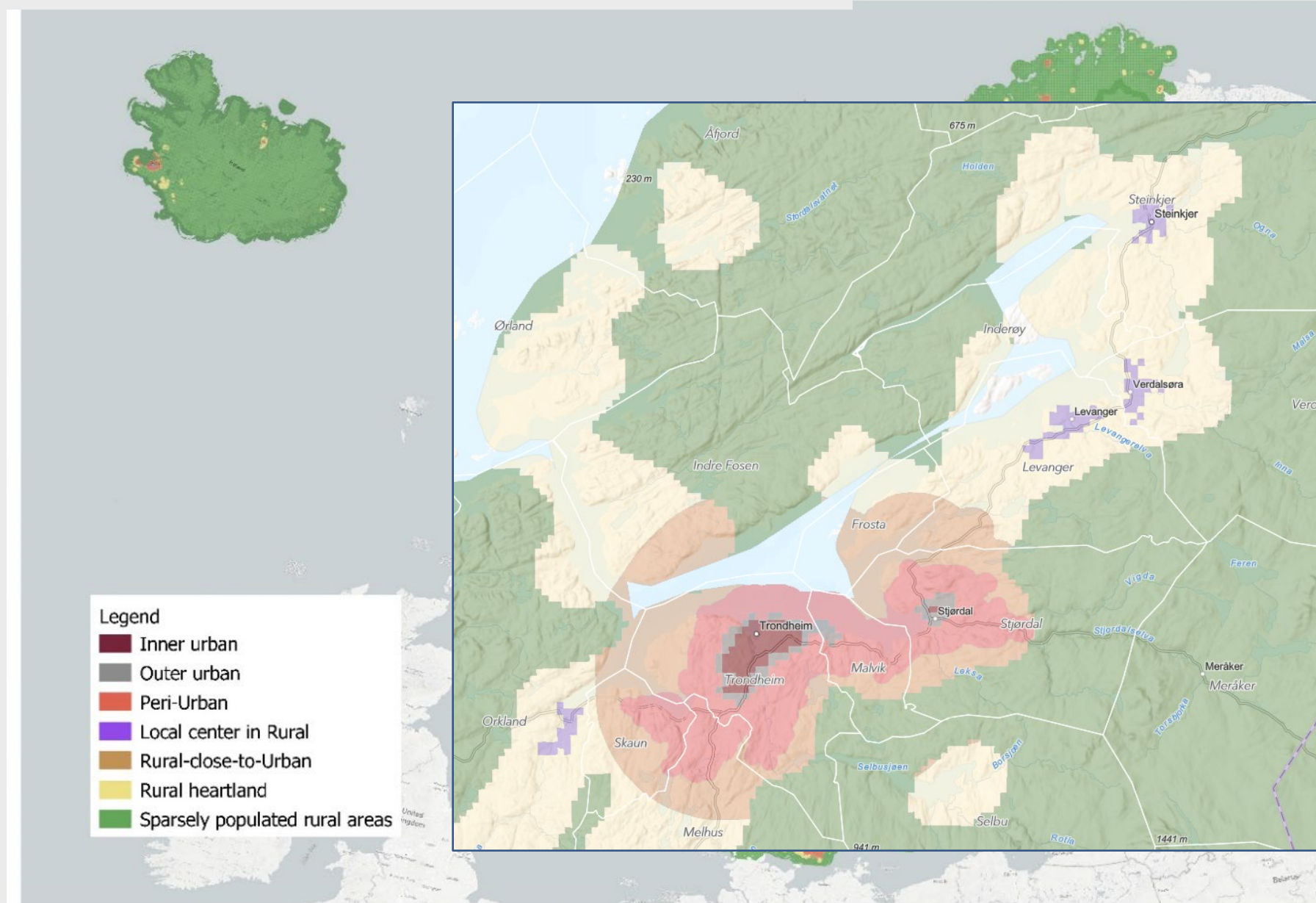


The Nordic level typology

Indicators

- Built environment
- Population density
- Land use (crop farming, forest etc)
- Worker commuting
- Working population by sector
- Work places

<https://nr.maps.arcgis.com/apps/mapviewer/index.html?webmap=703fb8e3b1944a54a26d6fb3424324ec>



Norway's relative position within this context

- Data harmonization, lack of data availability
- Need in redefining rural and urban areas with scaling it for the Nordics
- Governance initiatives supporting more equal development of the regions (service provision as example)
- Distances and transport issues affecting connectivity
- Gentrification/ new trends in rural-urban changes during and post pandemic?
- Digitalization of services and new types of models for service provision
- Impacts of border restrictions during pandemic effect on border regions
- Follow up and cooperation



Thank you!

Anna Vasilevskaya
anna.vasilevskaya@nordregio.org