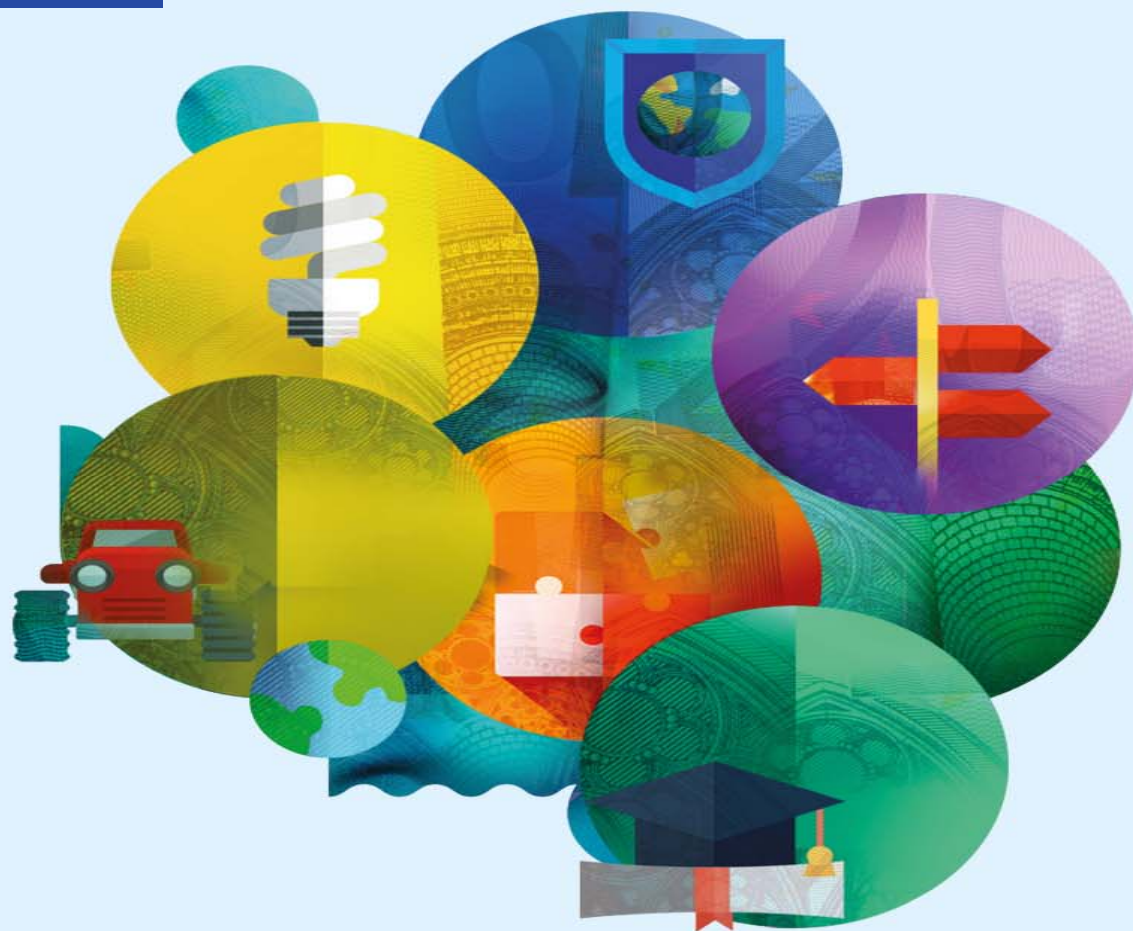




Territorial dimension of Interreg post 2020

Nathalie Verschelde, DG
REGIO D2

#CohesionPolicy
#EUinmyRegion



Territorial Cooperation post 2020 key messages

1. Cooperation not limited to Interreg (see ERDF reg)
2. Stronger territorial dimension : functional areas (hence more strategic outlook)
3. Simplification for programme authorities and beneficiaries
4. Integration of external dimension
5. Greater focus on CB Governance (specific objective)

Main changes

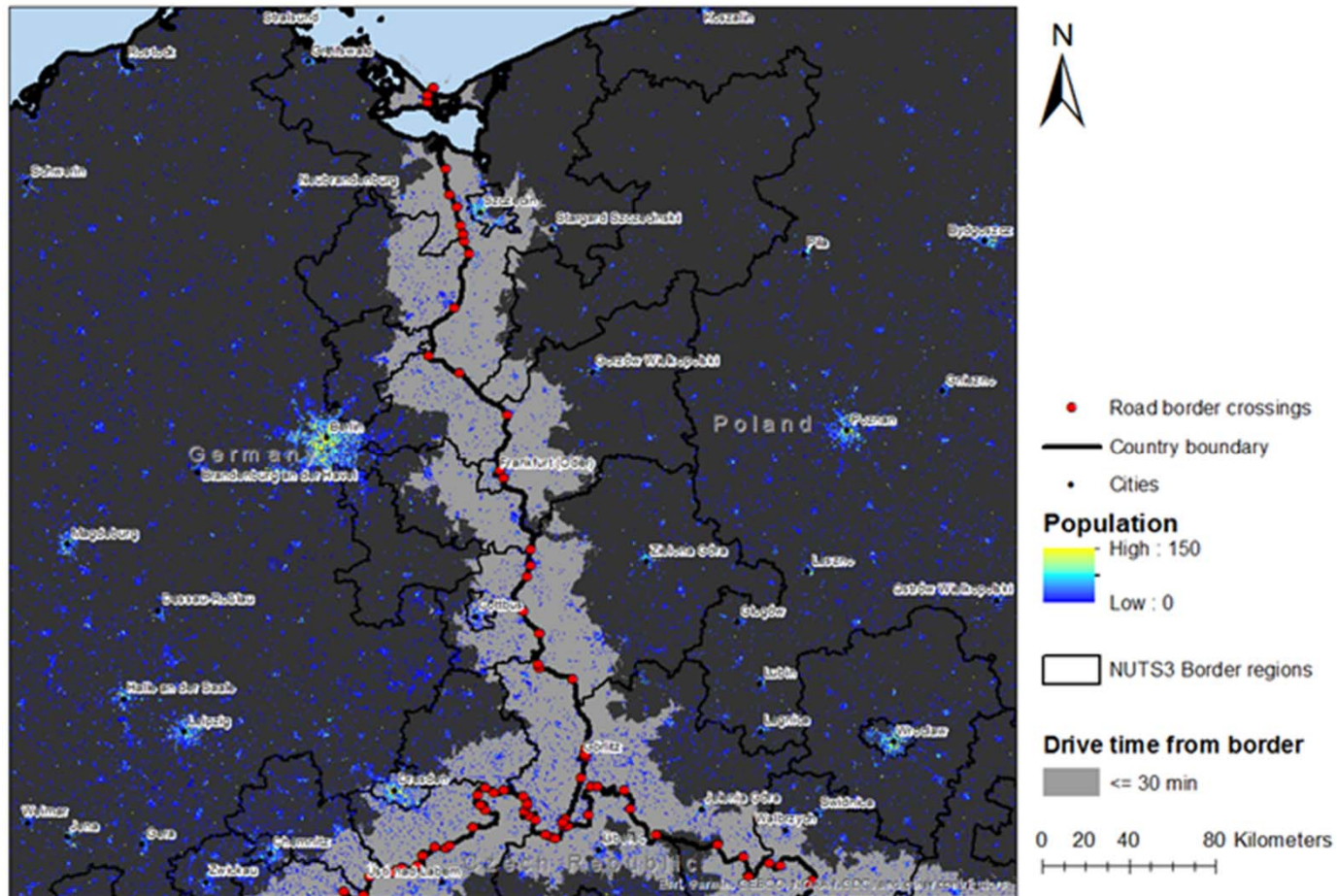
1. New dimension : **maritime** co-operation at sea-basin level
2. New dimension : Interregional innovation **investments**
3. Specific component for the **outermost** regions
4. Member States, third and partner countries, OCTs on equal footing
5. Integration of **external** cross-border cooperation
6. European Cross-Border **Mechanism**



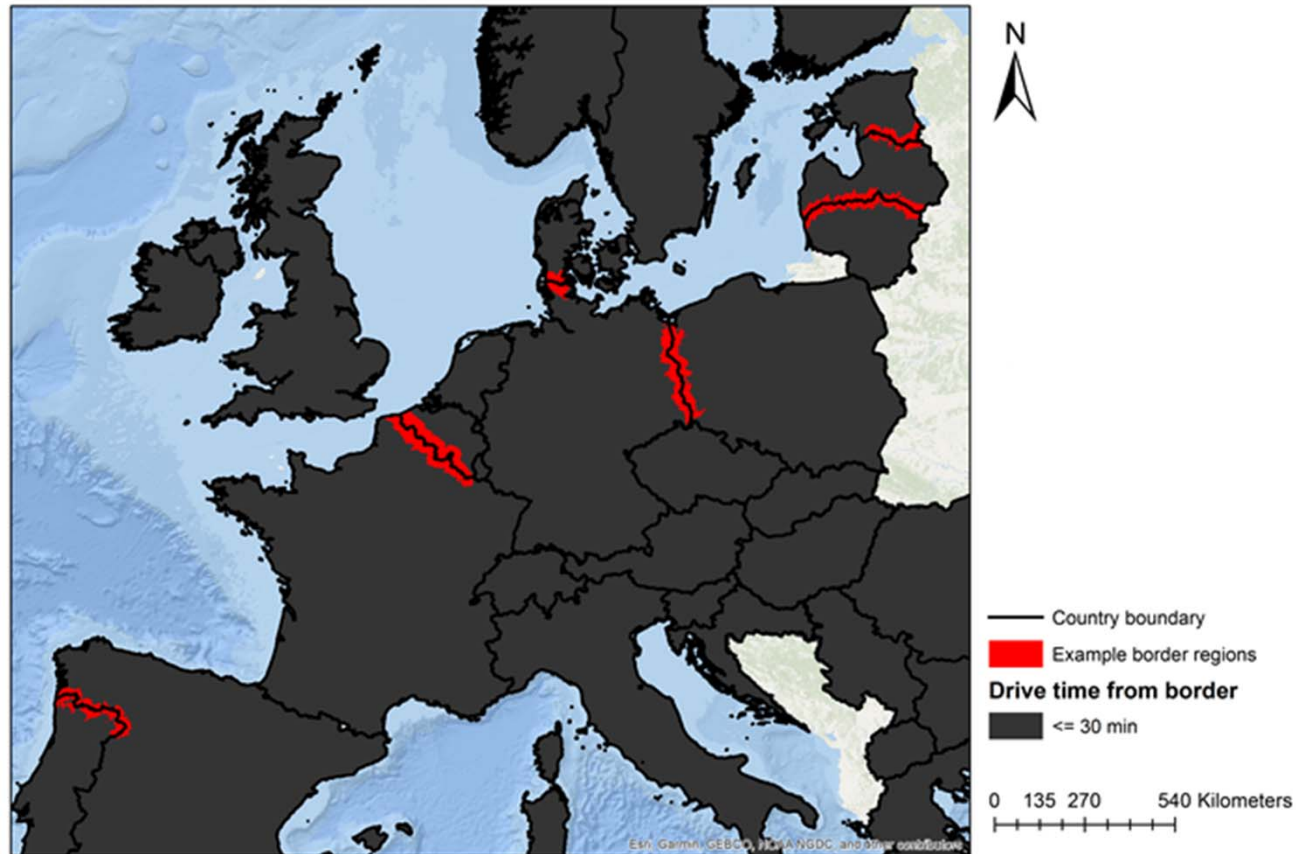
Contribution to territorial vision

1. Differentiation between terrestrial and maritime cross-border cooperation
2. Territorial continuity as a key vector of development
3. Cross-border territories to be seen as "single spaces"
4. Access to....

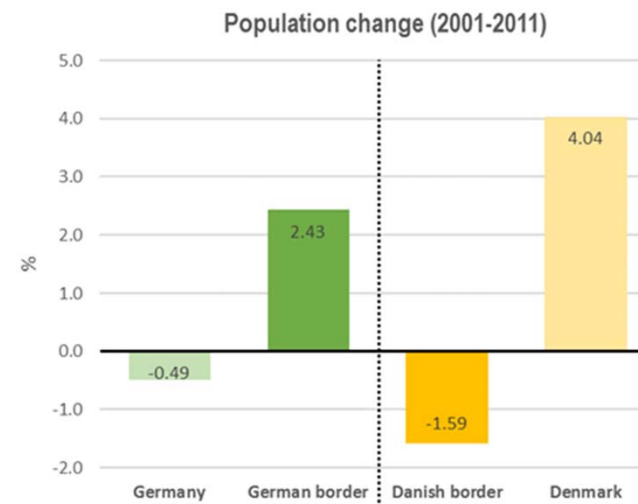
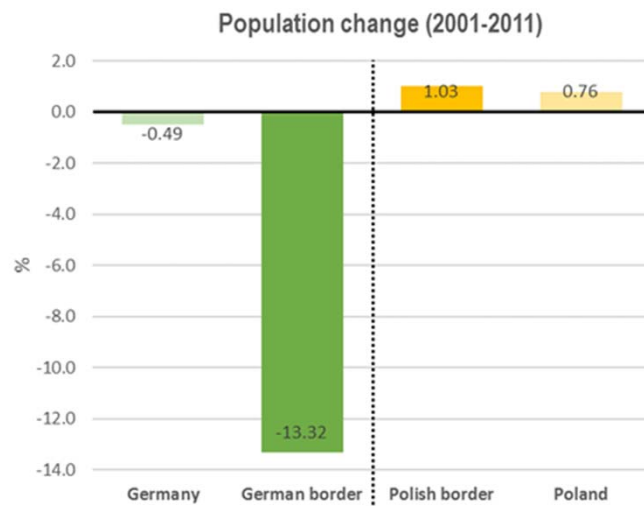
Cross-Border Position Papers



Cross-Border Position Papers



Cross-Border Position Papers



Promote cross-border territorial (spatial ?) continuity as an important vector for development

- ☐ To integrate the labour market
- ☐ To integrate education, training and lifelong learning
- ☐ To integrate health care provision (and emergency services)
- ☐ To integrate sustainable movement

I.e. to provide larger choice and more opportunities to all CB citizens

European Cross-Border Mechanism

1. A legal mechanism to overcome legal obstacles that hamper stronger cross-border interaction
2. A direct result of the 2017 Communication "Boosting Growth and Cohesion in EU Border Regions"
3. Main idea : establish case by case agreements between authorities to overcome existing obstacles (derogation from national rules)
4. Direct contribution to increased continuity (legal and administrative)

Extension of Strasbourg (FR) tram line to Kehl (DE)

