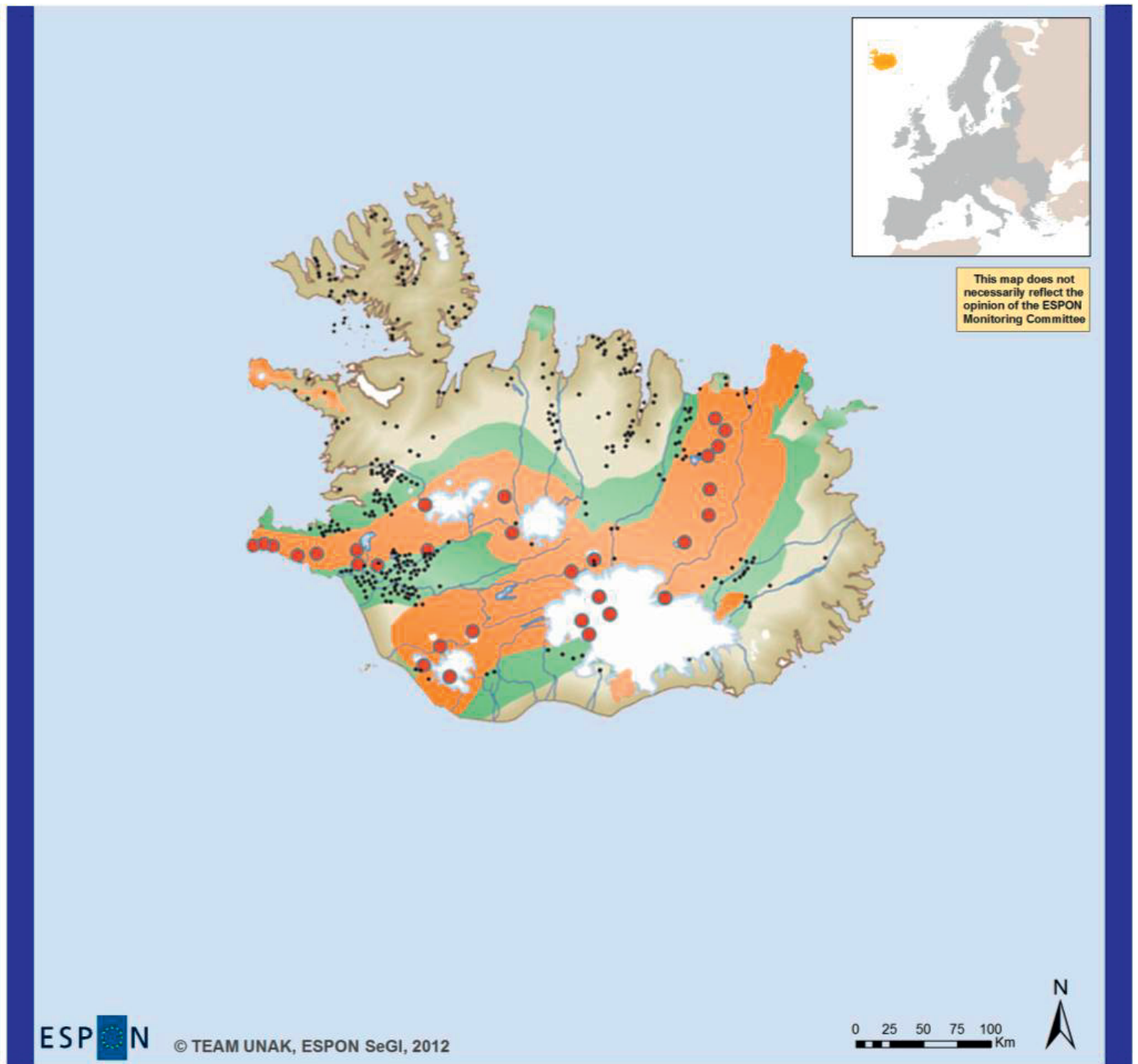


Geothermal fields



EUROPEAN UNION
Part-financed by the European Regional Development Fund
INVESTING IN YOUR FUTURE

Source: National Energy Authority (www.os.is)
© EuroGeographics Association for administrative boundaries

Geothermal fields

- High temperature field
- Low temperature field

Bedrock

- < 0.8 m. years
- 0.8–3.3 m. years
- 3.3–15 m. years