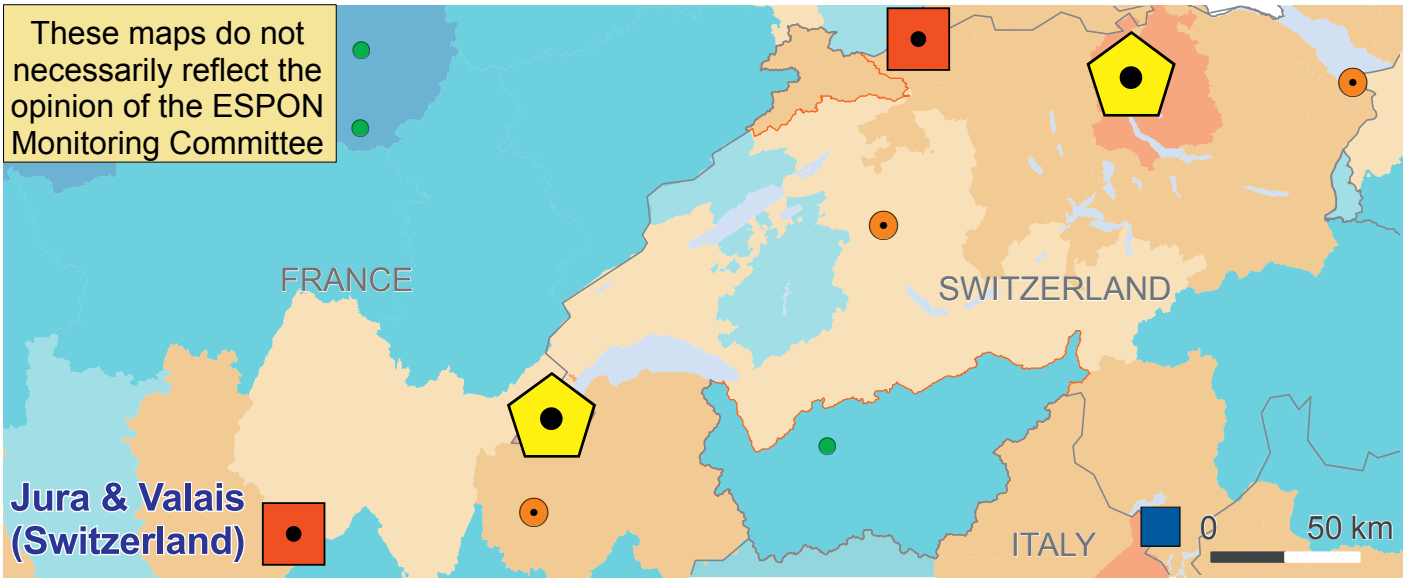
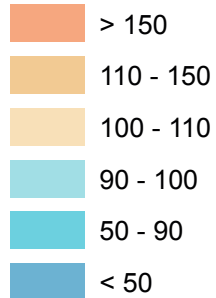


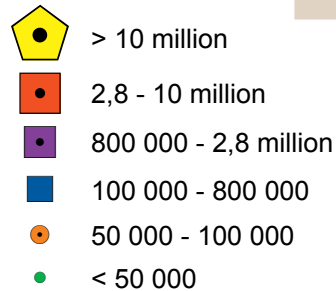
These maps do not necessarily reflect the opinion of the ESPON Monitoring Committee



Standardised potential accessibility by air in 2006 - ESPON = 100



Number of passengers at airports in 2007



Delimitation of the case study areas

Non ESPON space

North Calotte: number of passengers in 2006  
 Sources: Spiekermann & Wegener, Urban and Regional Research (S&W) for the accessibility indicator, Eurogeographics association and GISCO for administrative boundaries, national statistical institutes, Websites of respective airports (RO)  
 © Nordregio, ESPON TeDi, 2009  
 Mélodie Martin, Erik Gløersen, Alexandre Dubois