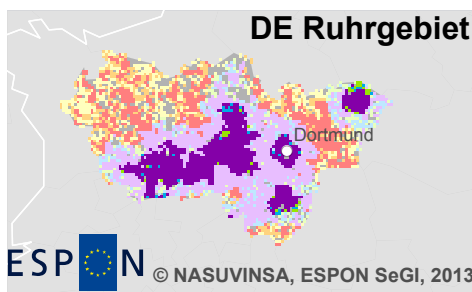
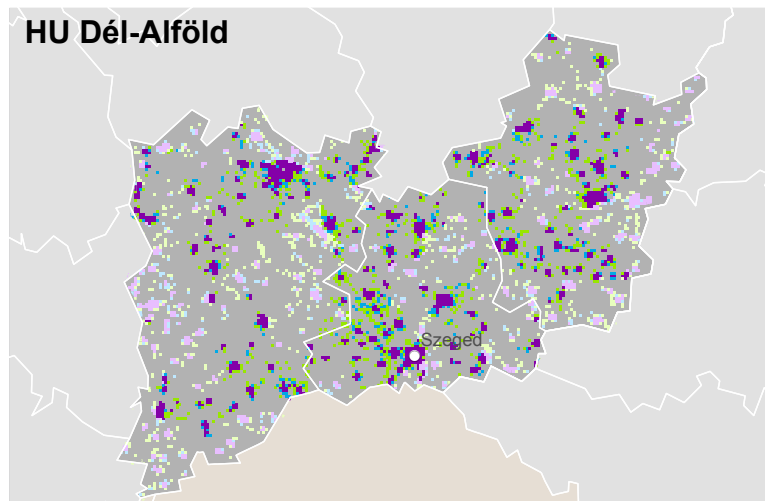
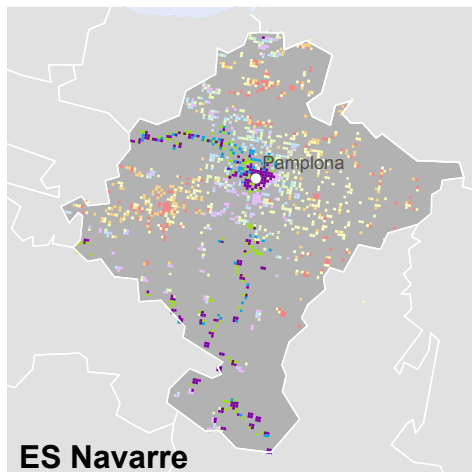
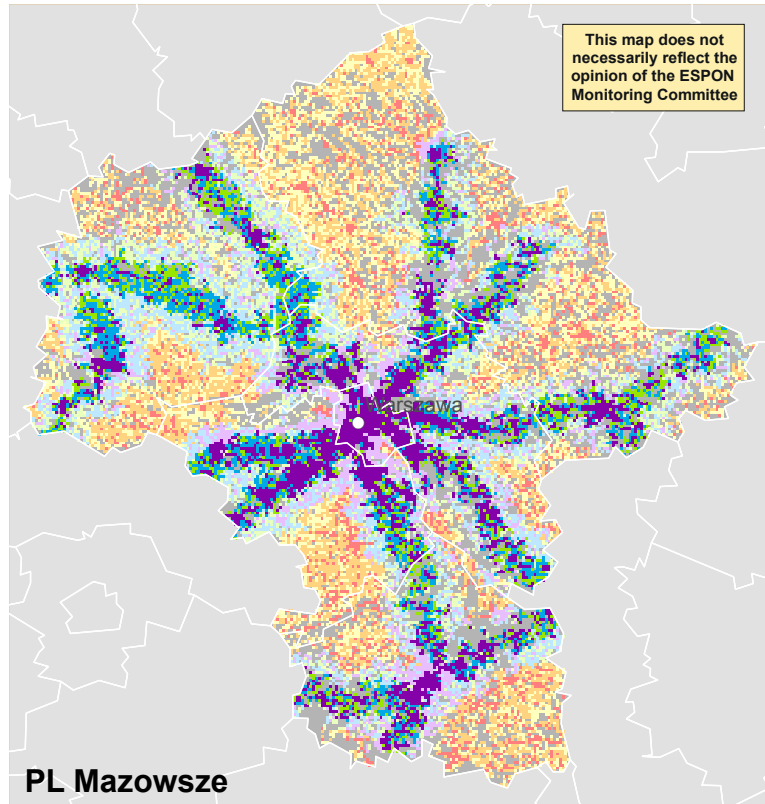
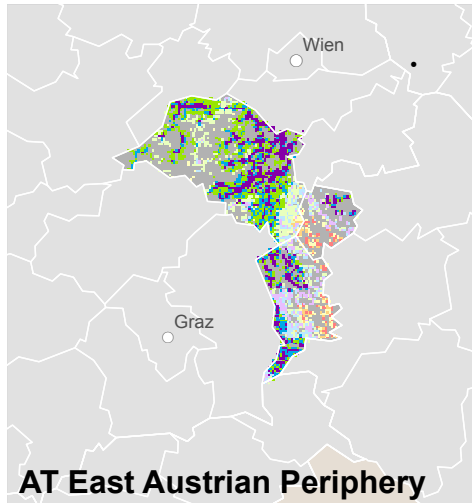


## Map 2 - Accessibility of railway stations



EUROPEAN UNION  
Part-financed by the European Regional Development Fund  
INVESTING IN YOUR FUTURE

Source: IGSO PAS, University of Vienna, Nasuvinsa, BBSR & PlanIdea, 2012  
© EuroGeographics Association for administrative boundaries

### Accessibility of population to railway stations (considers study regions as a whole)

- Low accessibility/ Low population density
- Low accessibility/ Medium population density
- Low accessibility/ High population density
- Medium accessibility/ Low population density
- Medium accessibility/ Medium population density
- Medium accessibility/ High population density
- High accessibility/ Low population density
- High accessibility/ Medium population density
- High accessibility/ High population density
- Unpopulated case study area
- ESPON area
- Non-ESPON countries
- Main cities

This map analysis considers the case regions not separately but as a group, comparing highest and lowest accessibility and population densities between them.