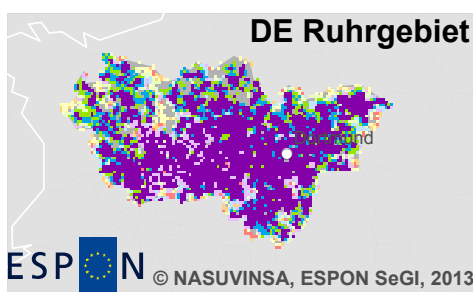
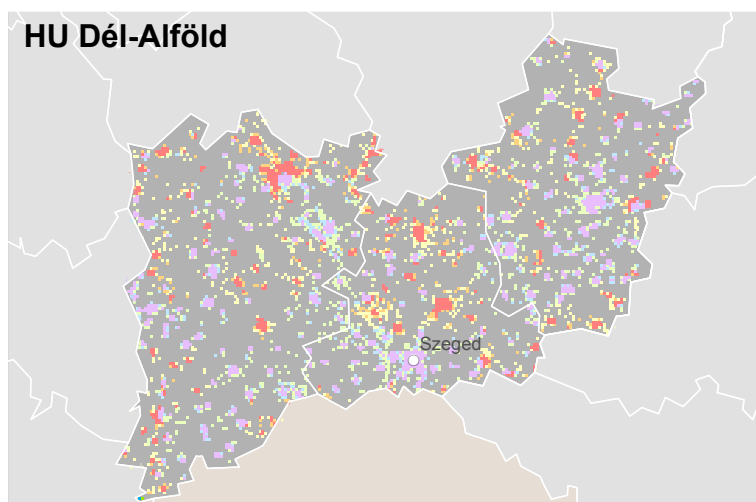
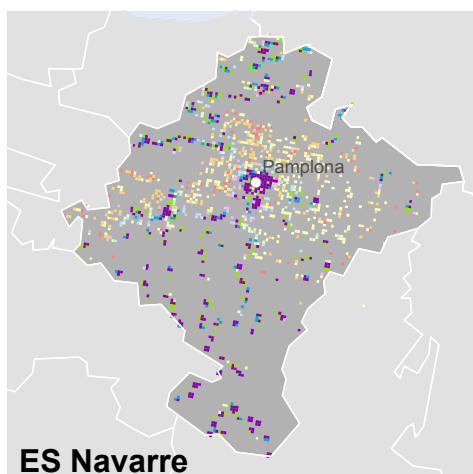
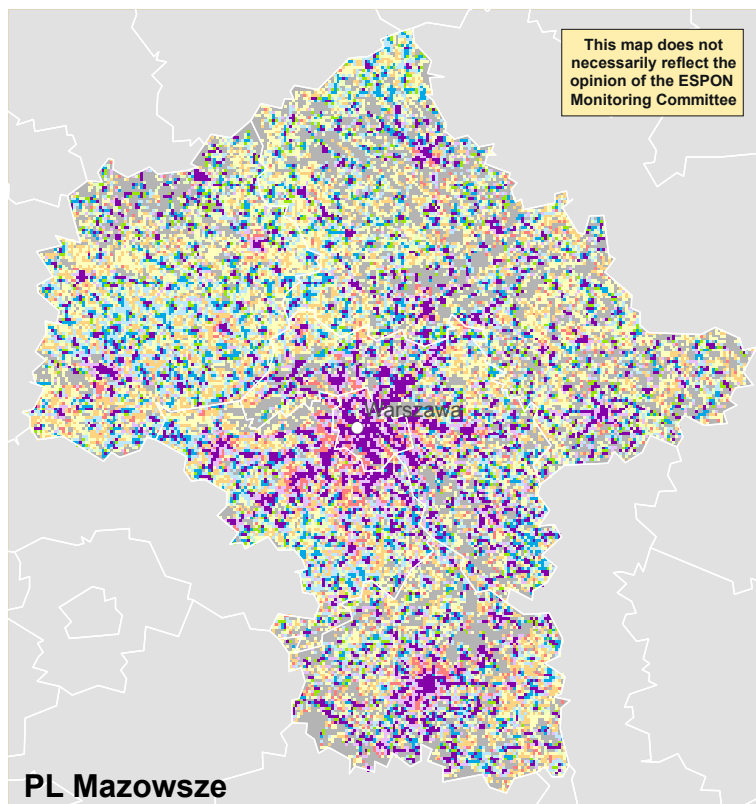
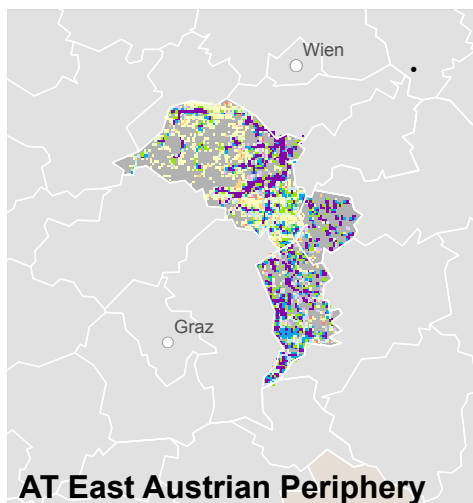


# Map 1 - Accessibility of primary schools



ESPON © NASUVINSA, ESPON SeGI, 2013

EUROPEAN UNION  
Part-financed by the European Regional Development Fund  
INVESTING IN YOUR FUTURE

Source: IGSO PAS, University of Vienna, Nasuvinsa, BBSR & PlanIdea, 2012  
© EuroGeographics Association for administrative boundaries

## Accessibility of population to primary schools (considers study regions as a whole)

- Low accessibility/ Low population density
  - Low accessibility/ Medium population density
  - Low accessibility/ High population density
  - Medium accessibility/ Low population density
  - Medium accessibility/ Medium population density
  - Medium accessibility/ High population density
  - High accessibility/ Low population density
  - High accessibility/ Medium population density
  - High accessibility/ High population density
- Unpopulated case study area
  - ESPON area
  - Non-ESPON countries
  - Main cities

This map analysis considers the case regions not separately but as a group, comparing highest and lowest accessibility and population densities between them.