



Inspire Policy Making with Territorial Evidence

ESPON evidence on urban and metropolitan areas

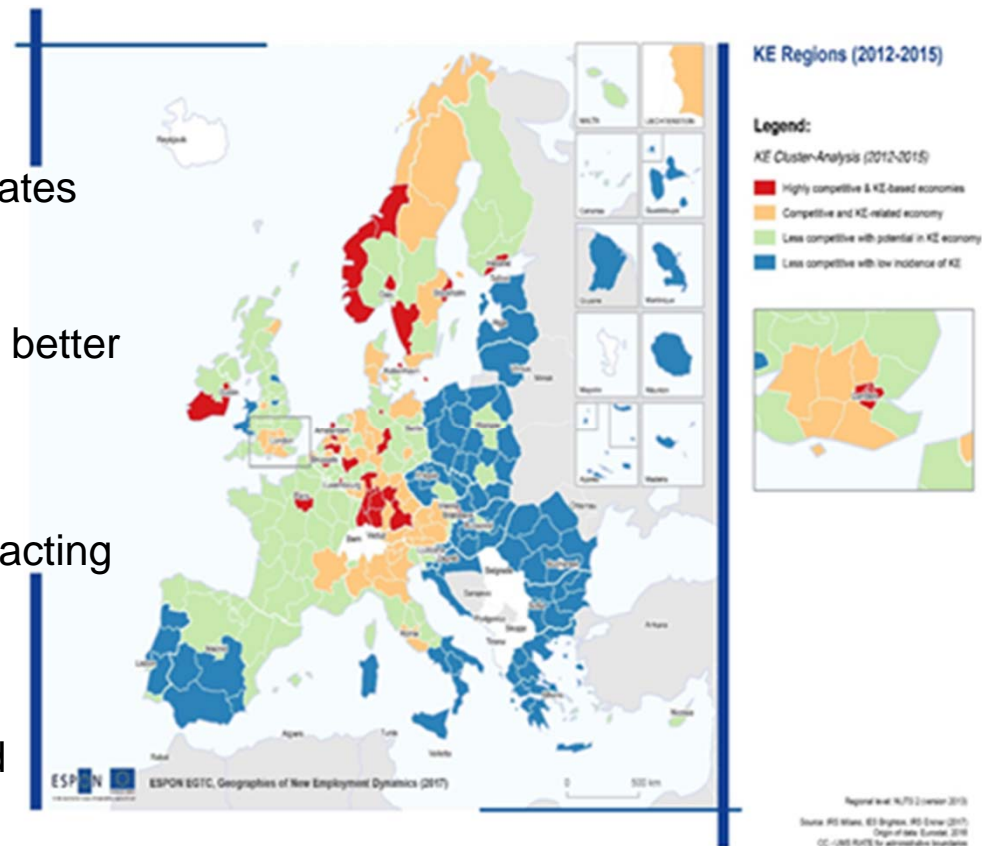
Ilona Raugze, Director of ESPON EGTC

SPIMA Final conference "Planning for a Metropolitan Future"

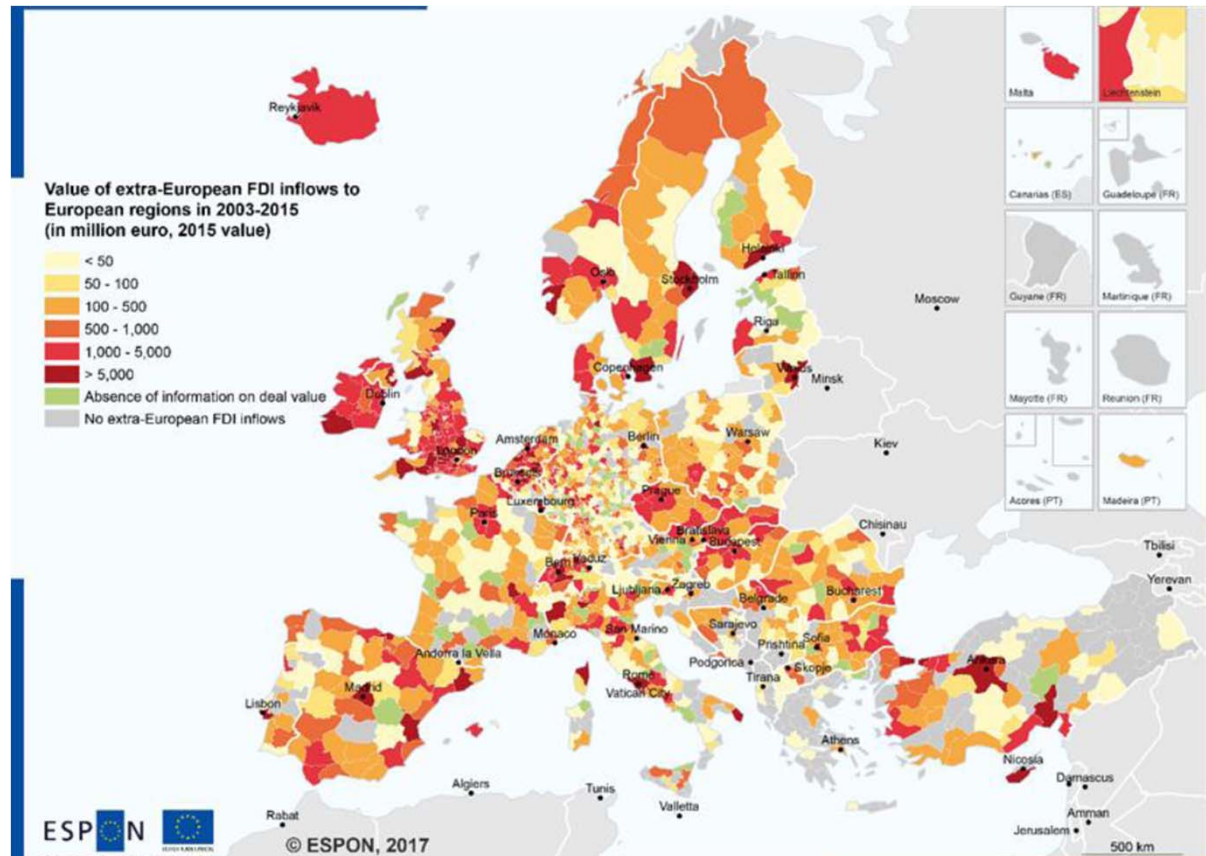
6 February 2018

Characteristics of European urban fabrics I

- Highest natural population growth, particularly in northwest Europe and in the western part of the Baltic Sea Region
- Capital cities show the highest net migration rates
- Economic growth engines that offer more and better job opportunities
- Highly competitive and knowledge-based, attracting people with higher education qualifications
- ICT hubs tend to be concentrated in large and easily accessible urban centres



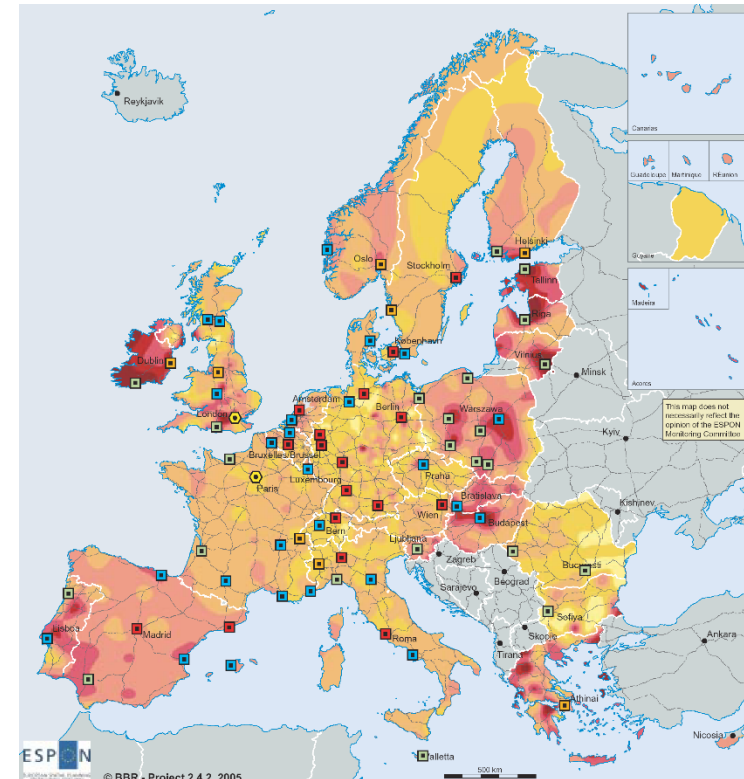
Characteristics of European urban fabrics II



- Direct impact of non-European owned-firms is highest in capitals and metropolitan areas
- 69% of all non-European owned firms in Europe are in urban regions accounting for 83% of employment

ESPON's contribution to metropolitan thinking and action

- In 2002 ESPON started mapping MEGAs leading to the first European comparable metropolitan evidence
- Research topics related to metropolitan development:
 - Delineations
 - Governance
 - Cross-border cooperation for polycentric development
 - Profiles and development perspectives
 - Global challenges (migration and refugee flows, FDI, knowledge economy)



Average yearly development of GDP per capita in Purchasing Power Standards 1995-2002 in percent*



*Switzerland, Norway and Bulgaria 1995 to 2001; Romania 1998 to 2001

Metropolitan Growth Areas



Highways of European level

© EuroGeographics Association for administrative boundaries

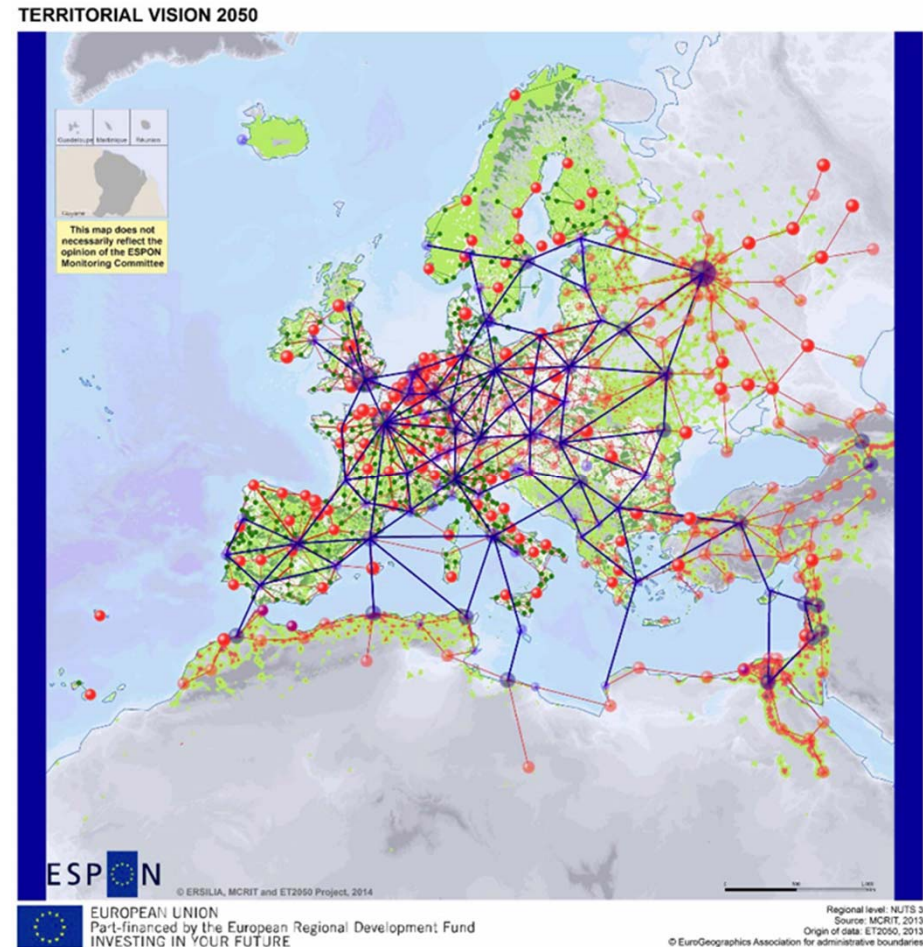
Regional level: NUTS 3

Origin of data: GDP: Eurostat, MEGA: ESPON 1.1.1 Nordregio

Source: ESPON database

Urban-related research themes addressed by ESPON 2013

- Territorial Scenarios and Visions for Europe (ET 2050)
- Global orientation of cities (FOCI)
- Growth poles and second tier cities (SGPTD)
- Small and medium-sized towns (TOWNS)
- Agglomeration economies (CAEE)
- Cross-border metropolitan areas (METROBORDER)
- Metropolitanisation and polycentric development in Central Europe (POLYCE)



Metropolitan-related research themes addressed by ESPON 2020

- New employment dynamics (EMPLOY)
- World in Europe (FDI)
- Small and medium sized enterprises in European regions and cities (SME)
- Territorial governance and spatial planning systems (COMPASS)
- Youth unemployment
- Sustainable land-use
- Territorial and Urban Potentials Connected to Migration and Refugee Flows
- Tool for assessing the socio-economic dynamics of functional urban areas

Policy and development considerations for a metropolitan future I

- Metropolitan Europe is a key precondition for its global competitiveness:
 - Competition for investment is increasing within Europe and globally
 - Ensuring attractive investment conditions is crucial, e.g. by securing skills related to emerging new economic sectors and jobs
 - Creating and sustaining innovation ecosystems based on highly educated human capital, social capital, government support and leadership etc.
 - Functioning as gateways to world markets for goods and people is a key for competitiveness

- Strong need to provide attractive and sustainable living conditions:
 - Metropolitan space needs to be well planned and functioning with high level of services to be attractive, competitive, sustainable and cohesive
 - Transport has in certain places reached its limits with very high levels of congestion

Policy and development considerations for a metropolitan future II

- Metropolitan strategies and policies need constant innovation, respond to challenges and see new opportunities
 - Linking strategically to the larger global context
 - Developing stronger cooperation with surrounding areas
- Further need to strengthening governance systems towards functional urban regions and metropolises
- European policies have to integrate the metropolitan reality and provide a strong long-term vision for a polycentric European territory

ESPON invites to participate!

- European Territorial Reference Framework to support the EU Territorial Agenda post 2020
 - Scenarios
 - Long-term European territorial development perspective
 - Mid-term policy proposals
- On demand peer-learning workshops - 6 throughout the year
- ESPON Transnational conference on functional urban areas and cross border cooperation – 16 May 2018, Nova Gorica, Slovenia
- Next cut-off date for selecting targeted analysis – 22 June 2018



Inspire Policy Making with Territorial Evidence

Thank you!

Ilona Raugze, Director of ESPON EGTC

ilona.raugze@espon.eu