



UrbaLyon
26 Mei 2020



METREX, the acronym for METRopolitan EXchange, is an established network of public organisations, active since 1996. The network's members are its main resource and together they represent a vast experience in addressing many of Europe's current, most pressing metropolitan issues. The strength of METREX is its direct contact with practitioners and decision makers in 48 METROPOLITAN regions and areas in Europe.



METREX Activities

1. Conferences, 2 / year
2. Expert Groups on specific issues
3. Sub networks
4. Liaising with EU Institutions
5. Continuously promoting the Metropolitan Dimension



Strategy Plan 2018-23

1. Continuously Exploring the Metropolitan Dimension
2. Actively taking the European Stage
3. Collaboration (horizontally & vertically)
4. Focus on Members
5. Metropolitan Image



Actions 2018-23

Metropolitan Dimension

1. Using the Metropolitan Frame in all our activities
2. Interfering in EU policies, programmes to stress the Metropolitan Dimension
3. Further exploration of the Metropolitan Dimension



Actions 2018-23

Collaboration

1. Deepening collaboration with other networks and institutions
2. Exchange on local and (inter)national level to better define our own position
3. Actively joining EU programmes/projects for and with our members and with non-members



Actions 2018-23

Learning

1. Survey on existing Metropolitan Studies
2. Setup a METREX Research Platform
3. Collaboration with knowledge institutes, think-tanks
etc



Actions 2018-23

European Stage

1. METREX Brussels Day
2. (EU) Project Participation through members
3. Alliances for Strategic Collaboration



Actions 2018-23

Focus on Members

1. Improved Services (support, website, etc)
2. Expert Exchange Portal
3. Alliances for Strategic Collaboration



Actions 2018-23

Image

1. Metropolitan Image
2. Member's image
3. METREX' image



Experts Groups

1. Governance
2. EconoMetrex
3. Baltic Space
4. Metropolitan

Landscapes balancing the urban
and rural

5. from Roads to Streets
(with Eurocities)

Sub Networks

1. Nordic Network
2. SURE
3. A-Ring (part)
4. Espon Stise
5. SMART NODE H2020

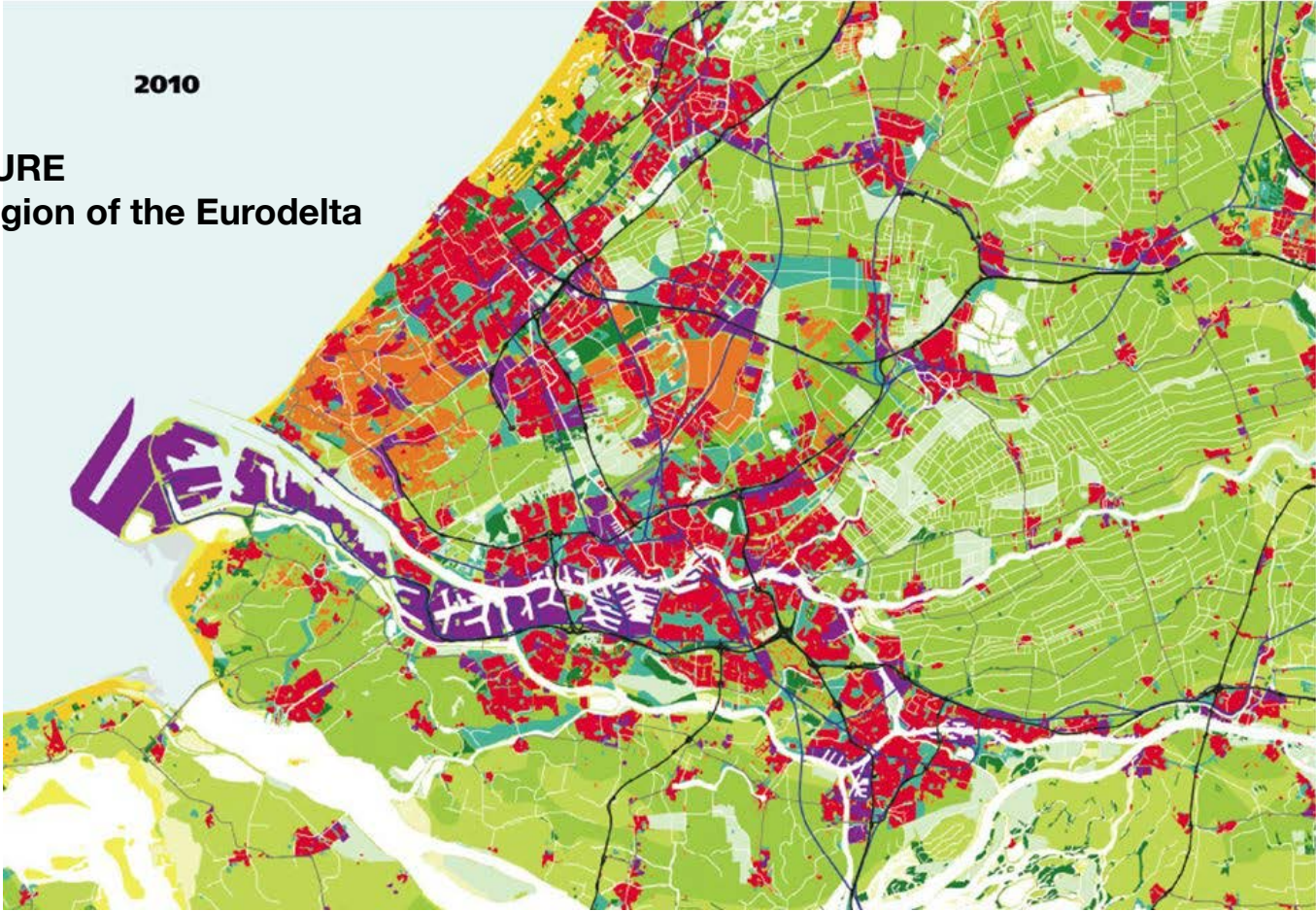


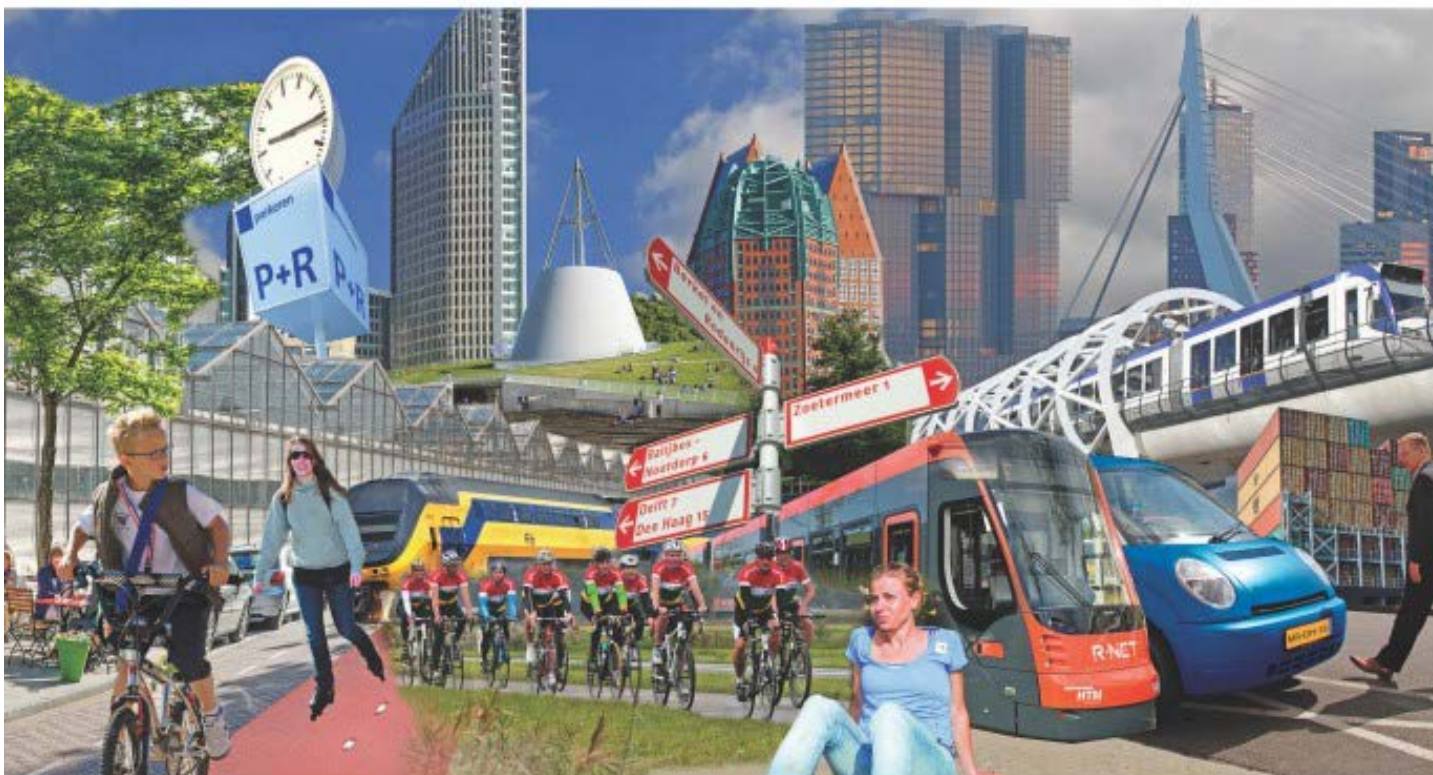
METROPOOLREGIO ROTTERDAM DEN HAAG



2010

SURE
Strategic Urban Region of the Eurodelta





Uitvoeringsagenda Bereikbaarheid

2016-2025

Uitvoering geven aan de Strategische Bereikbaarheidsagenda





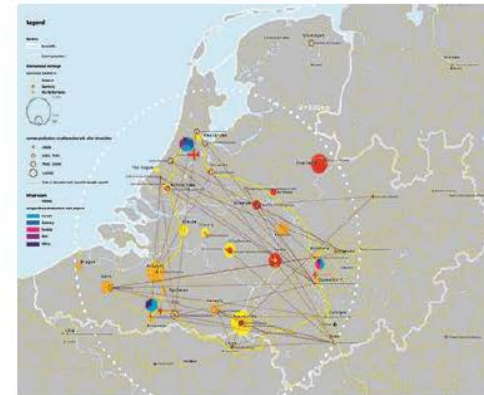
Dr. Ernst Grigat, Managing Director

METROPOLREGION
RHEINLAND

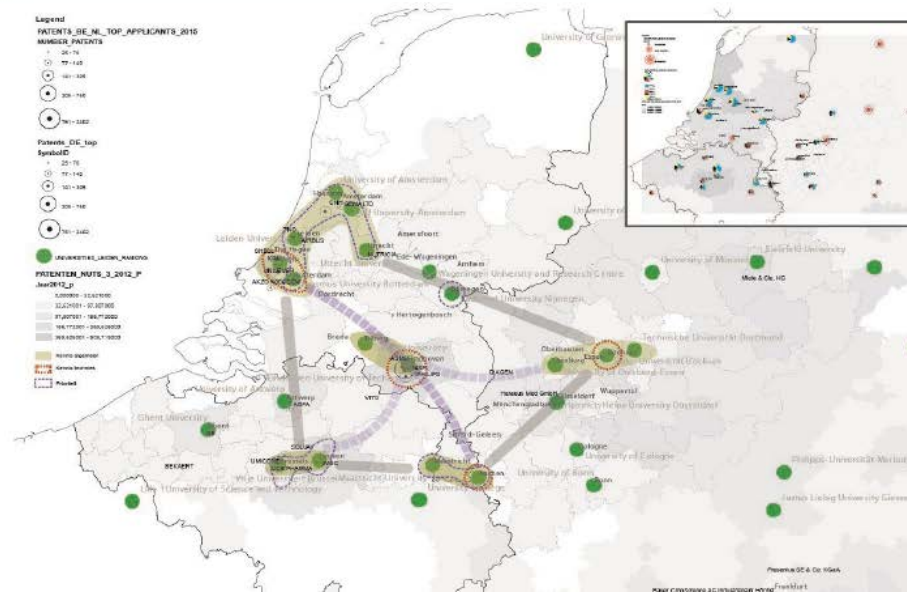


What does the Euroregion has in common?

- The Rhineland model: **highly educated, active government, cooperation public and private sector, long term thinking, quality of life**
- River delta, Energy flows, Transport flows
- Language, Culture, Climate, Economy
- Knowledge Cities



Knowledge region





Henk.Bouwman@euroMETREX.org

+31 654 295 377

+33 608 145 616

Tour Part Dieu
129 rue Servient
69326 Lyon cedex 3





The Network of
European Metropolitan
Regions and Areas