



RĪGAS  
PLĀNOŠANAS REĢIONS



# RIGA METROPOLITAN AREA COMPETITIVENESS IN RELATION WITH LOCAL CHALLENGES

## **PEER-LEARNING WORKSHOP:**

*Supporting the establishment of  
Riga Metropolitan Area Action Plan  
June 13, 2018 / Jurmala*

**Sabine Zagere**

*Riga Planning region  
Spatial Planning Unit*



# COMPETITIVENESS

PRODUCTIVITY..GROWTH..RISING PROSPERITY

## REGIONAL AND INTERNATIONAL COMPETITIVENESS

..ABILITY TO OFFER  
PRODUCTS AND SERVICES THAT MEET THE QUALITY  
STANDARTS AND ARE COMPETITIVE ..



# **METROPOLITAN AREA**

- **IN TIME AND SPACE DEVELOPED AREA**
- **WITHOUT CO-ORDINATED PLANNING IN THE BEGINNING**
- **SHARING OF INDUSTRY, INFRASTRUCTURE, AND HOUSING**
  - **SPACE FOR REGIONAL AND INTERNATIONAL COMPETITIVENESS**

**CAN COMPETITIVENESS BE DECLARED AS  
COMMON GOAL FOR RIGA METROPOLITAN AREA  
DEVELOPMENT ACTORS ???**



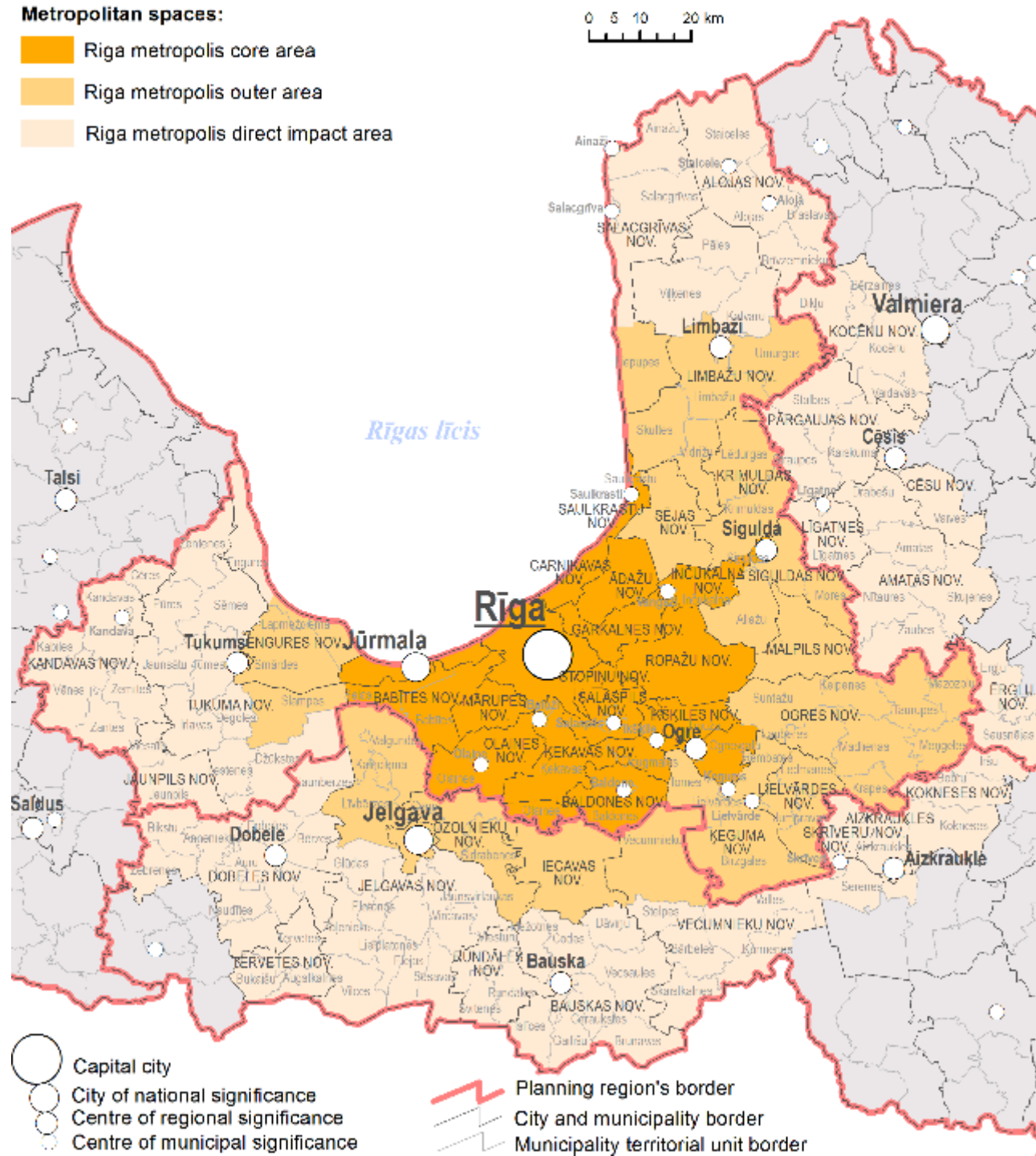
# RIGA METROPOLITAN AREA

Metropolitan spaces characterized by its specific features

CORE AREA

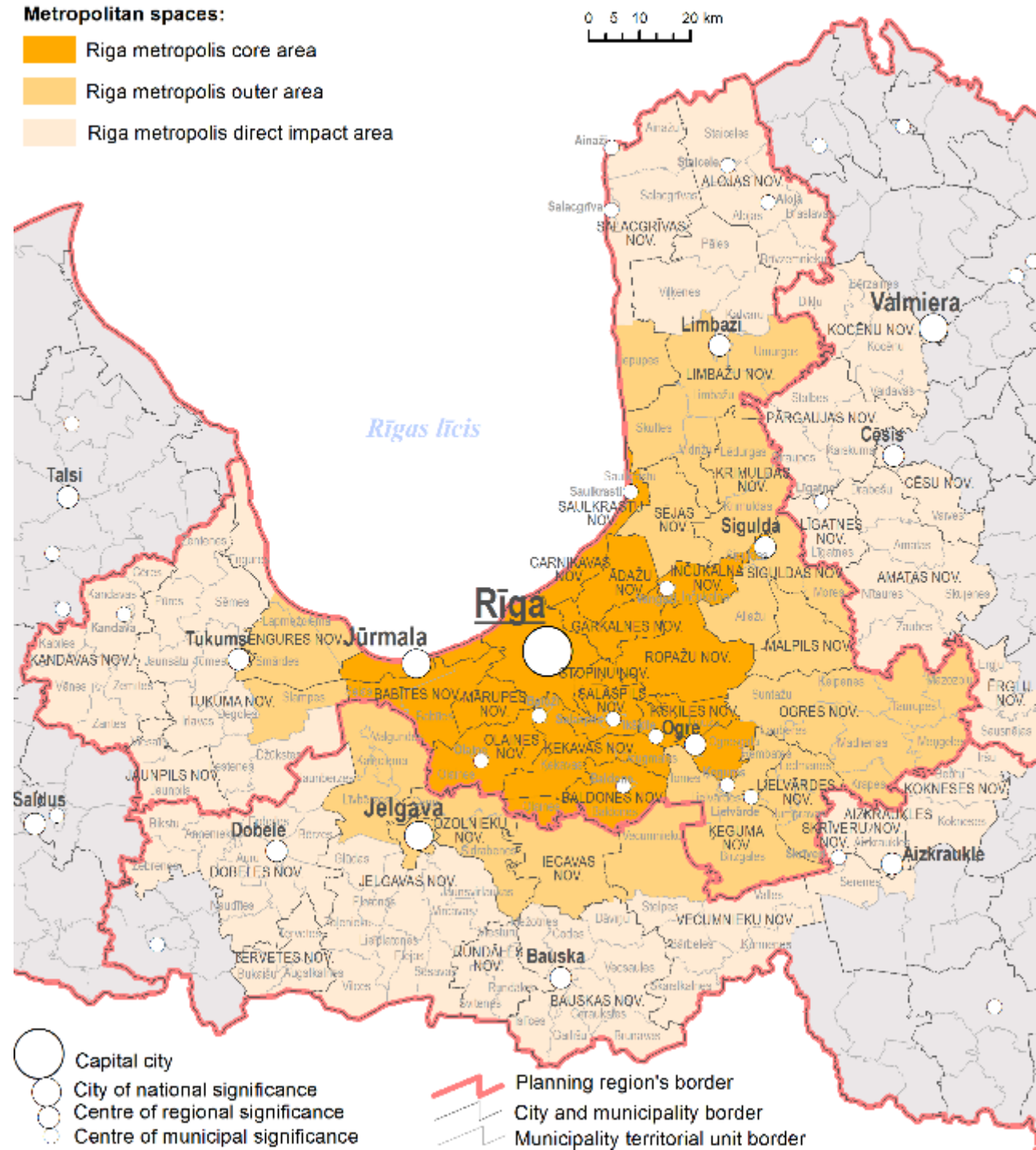
OUTER AREA

DIRECT IMPACT AREA



# MAIN FEATURES THAT DIVERSE METROPOLITAN SPACES:

- distance to the capital Riga
- commuting intensity
- trends in population changes
- directions of traffic flows
- availability of public services
- as well as other specific features



## Local challenges – as a part of the way to competitiveness

- **Governance** - common understanding of metropolitan area territorial coverage, common understanding about role and significance of competitiveness, adaption of new governance models, actions and responsibilities, decision-making and implementation mechanisms);
- **Settlement structure** – coordinated development of settlement, transport infrastructure, public services; bound of built areas expansion, tolerance to natural environment and culture heritage;
- **Transport and mobility** – planning of joint public transport routes, development of infrastructure as well as park and ride system in collaboration among state, region and involved municipalities;
- **Public services** – joint planning of public services (education, health care, culture ...) role of smaller satellite cities and regional development centers around capital city Riga;
- **Strengthening competitiveness** – specialization, identification of driving forces, industrial spaces in metropolitan area, creation of complex tourism offer, marketing strategies...



# RIGA PLANNING REGION – SUSTAINABLE DEVELOPMENT STRATEGY 2014-2030

## *VISION AND OVERALL OBJECTIVE*

**Quality in all spheres of life - becoming humanly attractive, effective, open-minded and tolerant region - COMPETITIVE IN THE GLOBAL ARENA**

- Human life and social environment
- Economic activities and products
- Physical space quality

## **DEVELOPMENT PILLARS / DRIVERS**

- **Targeted collaborative process**
- **Riga with metropolis**
- **Significant agents** (stakeholders) of the strategy implementation
- **Excellent** companies and institutions, education and research



## NATURAL INCREASE AND MIGRATION



**Actions** (keywords)  
FERTILITY PROMOTION  
STRATEGIES IMMIGRATION  
POLICY  
QUALIFIED WORKFORCE

## COMMUNITIES AND SELF-SUFFICIENCY



**Actions** (keywords)  
SOCIAL PLANNING  
LOCAL INITIATIVES  
TERRITORIAL COMMUNITIES  
SOCIAL AND ENERGY SELF-SUFFICIENCY

## FLEXIBLE AND EXCELLENT EDUCATION



**Actions** (keywords)  
INFRASTRUCTURE FOR PHYSICAL  
ACTIVITIES PROFESSIONAL  
EDUCATION AND LIFELONG  
LEARNING  
INNOVATIVE BUSINESS,  
EXCELLENT RESEARCH AND  
HIGHER EDUCATION LINKAGE

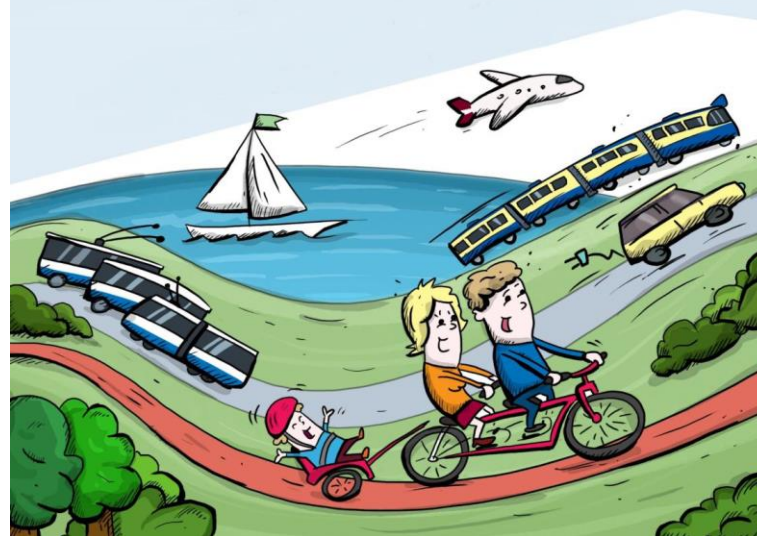


## GLOBALLY COMPETITIVE INDUSTRIES



**Actions** (keywords)  
SUPPORT FOR KNOWLEDGE  
AND TECHNOLOGY EXPORT  
NICHE PRODUCTS WITH  
INTERNATIONAL ATTENTION  
CULTURE AND CREATIVE  
INDUSTRIES TOURISM AND  
MARKETING STRATEGIES

## HIGH QUALITY TRANSPORT AND LOGISTICS



**Actions** (keywords)  
INTEGRATED PUBLIC TRANSPORT  
NETWORK CONNECTIONS WITH  
INTERNATIONAL IMPORTANCE  
COASTAL AND INLAND  
WATERWAYS  
URBAN LIGHT TRANSPORT  
CYCLING

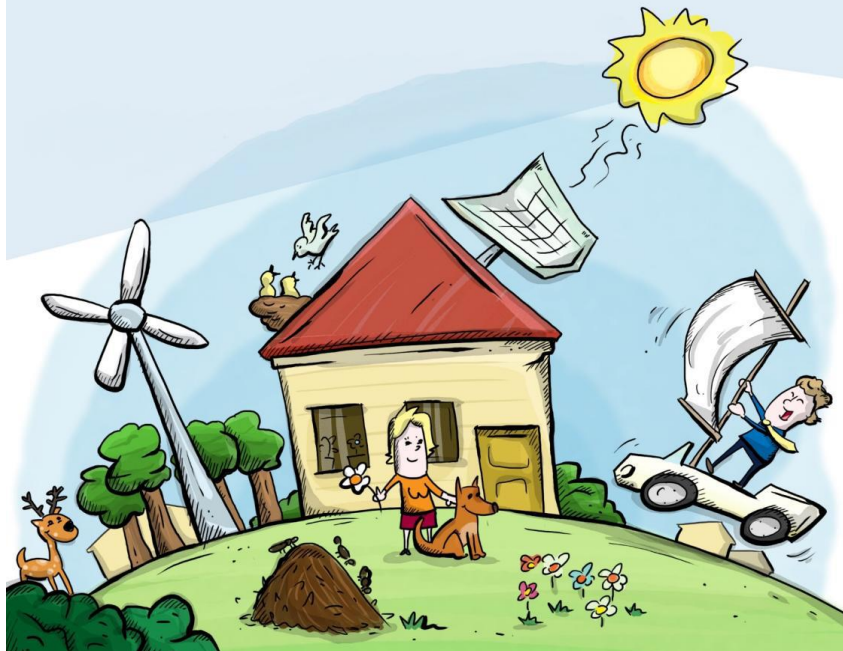
## MUNICIPALITIES - DRIVING FORCE FOR DEVELOPMENT



**Actions** (keywords)  
RESPONSIBILITY AND  
FINANCIAL SELF-SUFFICIENCY  
SPECIALIZED AND DIVERSE  
TERRITORIES  
ROLE OF DIFFERENT  
DEVELOPMENT ACTORS  
SUSTAINABLE AND EFFECTIVE  
SERVICE SYSTEMS



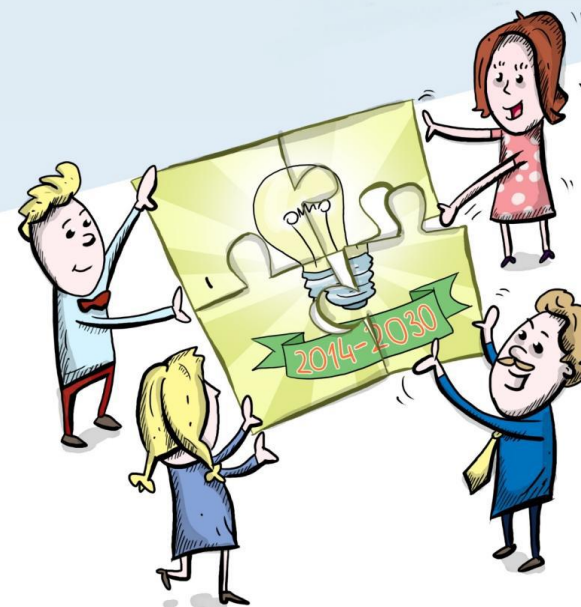
## SUSTAINABLE LIVING



### **Actions** (keywords)

MAINTAINING BALANCE OF SPATIAL  
STRUCTURE  
URBAN GROWTH MANAGEMENT AND  
REGENERATION  
ENERGY SYSTEMS BASED ON  
RENEWABLE RESOURCES  
HOUSING AND PUBLIC SPACE  
NETWORK (NEEDS-BASED)

## SMART DEVELOPMENT



### **Actions** (keywords)

SPECIALIZATION OF RIGA REGION  
*SMART:*

- Economy (competitiveness)
- People (social capital)
- Governance (participation)
- Mobility (transport & ICT)
- Environment (resources)
- Living (life quality)

## Opportunities:

- Targeted dialog and mechanism of collaboration of involved stakeholders - On political level and specialists
- Political support and leadership
- Model of governance selection
- Coordinated planning and space for independency
- Joint projects and funding
- Joint marketing
- Services and business coordination and collaboration
- Low emissions and effective economy
- Green spaces and recreation in relation to climate change challenges
- ...
- ....
- .....
- .....





**GOOG LUCK IN WORKSKOP SESSION!**

