

**TARGETED ANALYSIS //**

**DIGIPLAN – Fact sheet on digital  
plan data in Lithuania**

Annex 2.8 of final report

Final delivery // June 2021



This Targeted analysis was conducted within the framework of the ESPON 2020 Cooperation Programme, partly financed by the European Regional Development Fund.

The ESPON EGTC is the Single Beneficiary of the ESPON 2020 Cooperation Programme. The Single Operation within the programme is implemented by the ESPON EGTC and co-financed by the European Regional Development Fund, the EU Member States, the United Kingdom and the Partner States, Iceland, Liechtenstein, Norway and Switzerland.

This deliverable does not necessarily reflect the opinions of members of the ESPON 2020 Monitoring Committee.

#### **Coordination and Outreach**

Christian Fertner, University of Copenhagen and Piera Petruzzi, ESPON EGTC

#### **Authors**

University of Copenhagen (Denmark): Christian Fertner, Andreas Aagaard Christensen, Sara Folvig, Sophie Ingeholm

Norwegian University of Life Sciences (Norway): Marius Grønning, Daniel Galland, Bjørnar Rutledal, Marc Le Diraison

Swiss Federal Research Institute WSL (Switzerland): Anna Hersperger, Silvia Tobias, Corina Wittenwiler

Nordregio (Sweden): Julien Grunfelder, Alex Cuadrado

#### **Cite as**

ESPON DIGIPLAN (2021) Fact sheet on digital plan data in Lithuania. Annex 2.8 of final report. <https://www.espon.eu/digiplan>

#### **Advisory group**

Stakeholders: Bent Lindhardt Andersen and Ole Pagh Schlegel, Danish Business Authority, DK | Hilde Johansen Bakken, Ministry of Local Government and Modernisation, NO | Silvia Jost, Yves Maurer and Marc Pfister, Swiss Federal Office of Spatial Development, CH

ESPON EGTC: Senior Project Expert: Piera Petruzzi, Financial expert: György Alföldy

#### **Acknowledgements**

We would like to thank the experts who participated in the interviews.

#### **Information on ESPON and its projects can be found at [www.espon.eu](http://www.espon.eu).**

The website provides the possibility to download and examine the most recent documents produced by finalised and ongoing ESPON projects.

ISBN: 978-2-919795-63-5

© **ESPON, 2020**

Published in June 2021

Graphic design by BGRAPHIC, Denmark

Printing, reproduction or quotation is authorised provided the source is acknowledged and a copy is forwarded to the ESPON EGTC in Luxembourg.

Contact: [info@espon.eu](mailto:info@espon.eu)

**TARGETED ANALYSIS //**

**DIGIPLAN – Fact sheet on  
digital plan data in Lithuania**

Annex 2.8 of final report

Final delivery // June 2021

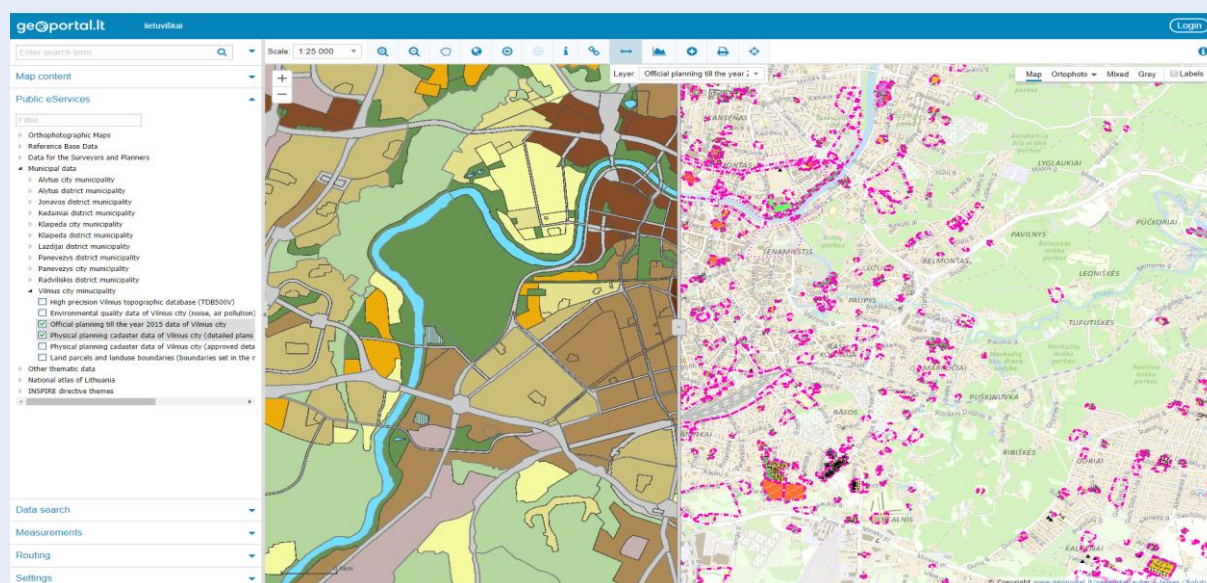


This fact sheet summarises the experience in digitisation of plan data in Lithuania. This explorative investigation includes information on the digitisation of plan data, on the digital platform that contains plan data, the current uses of digital plan data as well as foreseen developments of the investigated platforms. The inputs are based on both a desk study and interviews with experts at the State Enterprise GIS-Centras.

## Lithuania (Decentralised; two levels of government)

The Lithuanian Law of Territory Planning (which came into force in January 2014) defines key terms, conditions, and provides prescriptive guidelines for territorial planning. It also defines the main levels of terrestrial spatial planning to be the state, the municipal, and the local. The state level considers the entire territory of Lithuania. The municipal level encompasses territories characterised by administrative or functional commonality. The local level is concerned with territorial planning of cities, towns, villages, and steadings.

In addition, a new Comprehensive Plan of the Territory of the Republic of Lithuania was started in 2018. It defines spatial development aims and functional priorities for the use of territories, ensuring compatibility of strategic planning with spatial (territorial) documents valid in Lithuania. The Comprehensive Plan is expected to become the main development document of the country and its objectives are to analyse, evaluate, discuss with stakeholders and propose a common and integrated vision of spatial, environmental, social and economic development of the territory of the country. Geoportal – <https://www.geoportal.lt/map/index.jsp?lang=en>



### Background information

Main stakeholder(s)	Ministry of Agriculture of the Republic of Lithuania (as owner of GIS-Centras) GIS-Centras (as the institution managing Lithuania's geoportal) Ministry of Environment (as responsible for plan data)
Level of digitalisation of the geoportal	Intermediate: the user can make a limited number of simple operations based on the available plan data (e.g. data search, measurements, printing and saving)

### The digitisation of plan data

Main purpose(s)	To integrate national datasets and harmonize previous scanned data plans.
Added value	Easier to use, to transform, and to share.
Main driver	Support from the Ministry of Environment, which is the responsible body for planning processes.
Main obstacle(s)	Lack of resources, including human resources (e.g. lack of competence in municipalities).

## Lithuania (Decentralised; two levels of government)

Standards and methods	Authorized planners in each municipality can enter plan data in the portal. They do so by either scanning old plans or by preparing vector data according to the required specifications.
-----------------------	---

### The current platform

Type of plan data included	Municipal master plans, urban and detailed plans; regional plans; special spatial plans (for nature conservation, water bodies, coastal areas) and others.
----------------------------	--

Legal status of the plan data	National dataset is specified in the law and it is official.
-------------------------------	--

### The current uses

Type of users	Plans are public but mostly is businesses and realtors using the data.
---------------	--

Number of users	There are 20 000 registered users in Geoportal and there are, yearly, around 4 million requests for spatial data.
-----------------	---

Example of evaluation of planning practices or innovative practices	A newly developed system is being built. It will combine all processes in one chain: availability of topographic data, physical planning, construction technical projects and permissions, all needed data in a single environment, publicly available.
---	---

### Foreseen developments

All paper plans need to be scanned, perhaps could be nice to have it within the next two years. Paper plans should disappear and be replaced by vector.

Levels	Planning instruments (Name in English)	Planning instruments (Name in local language)	Included in the geoportal?
National	Comprehensive Plan	Lietuvos Respublikos teritorijos bendrasis planas (LRBP)	No
Sub-national	Comprehensive Plan	Lietuvos Respublikos teritorijos bendrasis planas (LRBP)	No
Local	Comprehensive plan of the municipality	Miesto bendrasis planas	Yes
	Comprehensive plan of the locality	Rajono bendrasis planas	Yes
	Detailed plans	Detalieji planai	Yes





Co-financed by the European Regional Development Fund

Inspire Policy Making with Territorial Evidence

espon.eu   

## **ESPON 2020**

ESPON EGTC

4 rue Erasme, L-1468 Luxembourg

Grand Duchy of Luxembourg

Phone: +352 20 600 280

Email: [info@espon.eu](mailto:info@espon.eu)

[www.espon.eu](http://www.espon.eu)

The ESPON EGTC is the Single Beneficiary of the ESPON 2020 Cooperation Programme. The Single Operation within the programme is implemented by the ESPON EGTC and co-financed by the European Regional Development Fund, the EU Member States, the United Kingdom and the Partner States, Iceland, Liechtenstein, Norway and Switzerland.

ISBN: 978-2-919795-63-5

Disclaimer

This delivery does not necessarily reflect the opinion of the members of the ESPON 2020 Monitoring Committee.