

September 2010



The ESPON 2013 Programme

DEMIFER

Demographic and migratory flows
affecting European regions and cities

Applied Research Project 2013/1/3

Deliverable 12/09
Demifer Case Studies

ROMANIAN MACROREGION 2
A Challenge for the European Regional Development

(North-East and South-East Regions)

Prepared by
Carmen Beatrice Păuna
Institutul de Prognoză Economică
Romanian Academy
Bucharest, Romania



EUROPEAN UNION
Part-financed by the European Regional Development Fund
INVESTING IN YOUR FUTURE

This report presents results of an Applied Research Project conducted within the framework of the ESPON 2013 Programme, partly financed by the European Regional Development Fund.

The partnership behind the ESPON Programme consists of the EU Commission and the Member States of the EU27, plus Iceland, Liechtenstein, Norway and Switzerland. Each partner is represented in the ESPON Monitoring Committee.

This report does not necessarily reflect the opinion of the members of the Monitoring Committee.

Information on the ESPON Programme and projects can be found on www.espon.eu

The web site provides the possibility to download and examine the most recent documents produced by finalised and ongoing ESPON projects.

This basic report exists only in an electronic version.

© ESPON & CNR, 2010.

Printing, reproduction or quotation is authorised provided the source is acknowledged and a copy is forwarded to the ESPON Coordination Unit in Luxembourg.

Table of contents

1. Introduction

1.1. Romanian Macroregion 2 composed of Nord-Est and Sud-Est Regions

1.2. Historical and economic background of Macroregion 2

1.2.1. Historical and economic background of Nord-Est Region

1.2.2. Historical and economic background of Sud-Est Region

1.3. Outline of the case studies addressed to the Macroregion 2 composed of Nord-Est and Sud-Est Regions

2. Review of existing analysis demographic and migratory flows in the case study addressed to the Macroregion 2 composed of Nord-Est and Sud-Est Regions

3. Demographic stocks and flows in the case study addressed to the Macroregion 2

3.1. Demographic stocks and flows of the Nord-Est Region and its subdivisions

3.1.1. Demographic aspects of Nord-Est Region

3.2. Aspects related to the situation of migration in the Nord-Est Region

3.2.1. Internal migration in the Nord-Est Region

3.2.2. External migration in the Nord-Est Region

3.3. Demographic stocks and flows of the Sud-Est Region and its subdivisions

3.3.1. Demographic Aspects of the Sud-Est Region

3.3.2. Aspects related to the situation of migration in the Sud-Est Region

3.3.2.1. Internal migration in the Sud-Est Region

3.3.2.2. External migration in the Sud-Est Region

4. Economic change and population in the case studies addressed to the Macroregion 2

- 4.1. Economic change and population: the labour market of the Nord-Est Region and its subdivisions
- 4.2. Economic change and population: the labour market of the Sud-Est Region and its subdivisions
5. Economic change and population: other aspects in the case study addressed to Macroregion 2
 - 5.1. Economic change and population: other aspects of the Nord-Est Region
 - 5.2. Economic change and population: other aspects of the Sud-Est Region
6. Economic and social effects of demographic change in the case study addressed to the Macroregion 2
 - 6.1. Economic and social effects of demographic change in Nord-Est Region
 - 6.2. Economic and social consequences of demographic change in Sud-Est Region
7. Population ageing at the regional level and the DEMIFER scenarios in the case study addressed to the Macroregion 2
8. Conclusions on the demographic and migration aspects in the case study addressed to the Macroregion 2
 - 8.1. Conclusions on the demographic and migration aspects in the Nord-Est Region
 - 8.2. Conclusions on the demographic and migration aspects in the Sud-Est Region
9. Annex I : Data issues and regional particularities in the case study addressed to the Macroregion 2 composed of Nord-Est and Sud-Est Regions
10. Annex II: Data used in the case study addressed to the Macroregion composed of Nord-Est and Sud-Est Regions
 - 10.1. Annex II: Data used in the analysis of the Nord-Est Region and its subdivisions

10.2. Annex II: Data used in the report of the Sud-Est Region and its subdivisions

Selected References

Figures

Figure 1. Number of romanian emigrants by country of destination – European Countries (2000-2008)

Figure 2. number of romanian emigrants by country of destination – Other countries (2000-2008)

Figure 3. Number of immigrants in Romania by country of origin – European Countries (2000-2008)

Figure 4. Number of romanian emigrants by nationalities (1990-2008)

Figure 5. Evolution of emigrants in Nord-Est Region (1990-2008)

Figure 6. Evolution of immigrants in Nord-Est Region (1990-2008)

Figure 7. Evolution of the number of emigrants and immigrants in Sud-Est (1990-2008)

Figure 8. Active population 2008 of the Nord-Est Region (a)

Figure 9. Active population 2008 of the Nord-Est Region (b)

Figure 10. Fertility rate of the Nord-Est Counties (1990-2008)

Figure 11. Active population 2008 of the Sud-Est Region (a)

Figure 12. Active population 2008 of the Sud-Est Region (b)

Figure 13. Fertility rate of the Sud-Est counties (1990-2008)

Figure 14. DEMIFER Policy Scenarios for the Macroregion 2 (2005-2050)

Figure 15. DEMIFER Reference Scenarios for the Macroregion 2 (2005-2050)

Maps

Map 1. GDP/capita 2007 (in PPS) of the Macroregion 2

Map 2. Crude birth rate 2005-2007 of Macroregion 2

Map 3. Crude death rate 2005-2007 of Macroregion 2

Map 4. Population 2008 of the Macroregion 2

Map 5. Life expectancy at birth – men, 2006-2008, Macroregion 2

Map 6. Life expectancy at birth – women, 2006-208, Macroregion 2

Tables

Table 1. Natural movement of the population in Nord-Est Region (2008)

Table 2. Natural movement of the population in Sud-Est Region (2008)

Table 3. Structure of population in Nord-Est Region (2000-2008)

Table 4. Internal migration caused by change of residence in Nord-Est Region (2007-2008)

Table 5. Internal migration according to urban/rural areas in Nord-Est Counties (2007-2008)

Table 6. International migration according to sex in N-E counties 2007-2008

Table 7. Structure of population in Sud-Est Region (2000-2008)

Table 8. Internal migration caused by the change of residence in the Sud-Est Region (2007-2008)

Table 9. Internal migration according to urban/rural areas in Sud-Est Counties (2007-2008)

Table 10. International migration according to sex in S-E counties 2007-2008

Key findings

- *Since Romania became member of the European Union in 2007 Romanians represent approximately 19% of the migrants between the EU-countries compared to a share of its population of 4.3%, according to the Communication from the Commission of the European Communities of 18 November 2008. In the same source there is stipulated that the Romanian migrants represent approximately 2.5 % of Romania's active population.*
- *Their main destination country was Spain, destination of over 50% of the Romanians who left their country, followed by Italy (approximately 25%) and by Germany.*
- *At the same time we can observe also an intensification of the phenomenon of immigration in Romania.*
- *The actual extent of migration is difficult to estimate for Romania, the records provide statistical information only for permanent emigration. The official figures for migration reflect only a small fraction of the actual size of the phenomenon, because temporary emigration is excluded. Spain and Italy are not among the first destinations of permanent emigration flows, but they are the largest receiver of temporary emigration from Romania.*
- *These emigration processes are also observed for the case study area, the Romanian Macroregion 2, which is composed of Nord-Est and Sud-Est Regions. It can be expected that a considerable share of Romanian emigrants will come back to their regions of origin and their extended, traditional family, after they realised their aim*
- *In Romania, as compared to West European countries, the ageing of the population was delayed. The phenomenon of demographic aging of the population is a result of decreased fertility and increased life expectancy. The combined effects of the two processes lead to a reduction in the young population and an increased share in the older population. A continuation, in the near future, of the fertility decrease phenomenon (of the young population share within the total population, respectively) and an increase in number and share of the older population (due to a life expectancy higher than the present one), will lead to a older population larger than the younger one, which situation can be qualified as serious demographic imbalance, with effects on the economic situation, as for the example the increase of the old age dependency ratio, with effects on the economic situation, as for the example the increase of the old age dependency ratio.*
- *Following the general national trend, the population of Macroregion 2 has faced in the last years, mostly a decrease. Regarding the age structure of population in Macroregion 2, we can observe that there are some age categories which had yet an increase generally, as for example the group of population younger than 34 years, the one between 50 and 59 years and the one over 70 years. Another observation would be that the population younger than 34 years in the*

rural areas of Macroregion 2 has had unfortunately very often a decrease of its number because of an inadequate medical care in most of the cases. Another point, which has to be underlined, is the fact that at all age categories in the Nord-Est Region the population decreased in the last years.

- One of the most discussed indicator could be the fertility rate which has faced a quite dramatic evolution in România and in the Macroregion 2 as well, where its level was from an average fertility of around 60 in '90s to one of around 40 for 1000 inhabitants in 2008. In the Macroregion 2, the fertility rate is mostly higher in the rural area as in the urban one (sometimes it was almost two times higher, as for example 60.6 compared to 32.5 for 1000 inhabitants in 1994). It is also a well-known fact that the Nord-Est region has the highest fertility rate (44.7 for 1000 inhabitants in 2008) from all Romanian regions. Some reasons for this situation are the tradition of large families, level of education, a low level of social assistance (in respect of teenagers assistance), mentality, etc.
- The mortality rate in the Macroregion 2 has continuously increased, thus in 2008 it was 11.2 compared with the one in 1990 of 9.5 for 1000 inhabitants. The Nord-Est Region has a lower mortality rate as that of Sud-Est Region. As expected in the rural areas it is much higher as in the urban ones, for example in 2008 it was 13.4 in rural zones compared with 9 for 1000 inhabitants in urban zones.
- The Nord-Est region has the highest level of poverty in Romania: 40.7% of the total population represents the share¹ of the poor persons (according to the National Anti-Poverty and Promotion of Social Inclusion Plan, 2006-2008).
- In the last years, the counties with the highest values for emigrants are Neamț, Iași and Bacău while the lowest values are recorded in Botoșani and Vaslui.
- The number of immigrants is quite important for the region, because of the features of immigration, which implies a lower number and distribution of new comers from West European countries and a higher proportion of the immigration from the Republic of Moldova.
- Main immigration flows come from Moldova. They settled predominantly in Iași, Suceava and lowest number in Botoșani.
- The Nord-Est region is affected by the migration of workforce outside Romania; this cannot be analyzed based on the lack of measures and the interest to monitor this process; however, more consistent steps are related to school children left with grandparents or elder brothers, for which the region has to look and find solutions for schooling and specialized assistance

¹ head count ratio, calculated as a report between no. persons / households whose income or y_i costs are lower than the poverty line z and the total no of population

- *Lack of appropriate jobs, unattractive wages, as well as inadequate qualifications lead to massive population migrations to economic growth areas in the country or abroad.*
- *There is not only the case of Nord-Est Region but also of Sud-Est Region, which is the second largest Romanian region.*
- *The counties with the highest emigration rates in Sud-Est are Galați, Constanța and Vrancea, in particular because the unconsolidated economic structure, where the young population massively left towns (not the rural areas) to work abroad. The lowest rates were registered in Tulcea County and Braila County.*
- *The number of immigrants is reduced in the Sud-Est region. Most immigrants came to Constanța County (seasonal workers to tourist areas on the black sea coast) and the least to Brăila County and Buzău County.*
- *For both of the regions, Nord-Est and Sud-Est there is in the last years a reverse departure, from rural-urban to urban-rural..*
- *Ethnic diversity specific to the region requires solutions to provide access to education and professional training and support for the disadvantaged ethnic groups, in particular for the Roma population (1.7% from the population of Sud-Est Region).*
- *Although there are no detailed data on migration during the past years at a regional level, a series of companies in Sud-Est, especially in the naval industry, experienced a problem of the deficit in the labour supply, caused by the emigration of a significant number of employees with average and higher education and qualification.*
- *The total number of North-East and South-East emigrants will decrease continuously until 2050. It is to underline that the number of migrants to other destinations than Europe will be smaller than the one of migrants who feel attracted to Europe.*
- *According to the scenarios of all the 4 Policy Scenarios, the number of population based on age group generally follows a descending trend. Exception is the very old age group over 89 years, as a result of life expectancy increase. The labour force evolution follows the same descending trend. The drop of population for the young age group - in the case of all the 4 Policy Scenarios - will determine in both regions the increase of the "old age dependency ratio" and of the "economic old age dependency". The value of these indicators is higher in the South-East Region, compared to North-East. One of the causes is the migration of the young population to more developed regions of Romania, or west-European countries, especially Italy and Spain.*
- *Romania should undertake its role of eastern European Union border, and in particular the case study regions, Macroregion 2, which is, as a border region, now and will be in the future more exposed to immigration flows.*

1. Introduction

Demographic aging is a multifaceted issue: demographic, economic, social, political and legal (with regard to the free movement of people and labour force, emigrants, right to work etc.). The World economic recession, as well as certain demographic policies will certainly introduce new elements, some possibly contradictory, in dealing with and the analysis of such a complex and intricate issue.

For the European space, the movement of people and labour force, respectively, is of major significance, as the EU enlargement in successive waves, the demographic aging of the population in the (West) European countries at an accelerated rate and the economic reasons represent the main incentives for the intensified movement of people and labour force.

According to the Communication from Commission of the European Communities of 18 November 2008, Romanian migrants represent approximately 2.5 % of Romania's active population. According to the same source Bulgarian and Romanian citizens resident into the EU-25 increased from approximately 69,000 at the end of 2003 to approximately 1.8 billion at the end of 2007. Romanians represent approximately 19% of the total of people recently exercising freedom of movement within the EU and who have resided in another EU member state during the past 4 years. Their main destination country was Spain, which received over 50% of the people recently exercising freedom of movement within the EU. The second country in the number of Romanian citizens recently exercising freedom of movement was Italy (approximately 25%), followed by Germany. In the same time we can observe also an intensification of immigration phenomenon in Romania

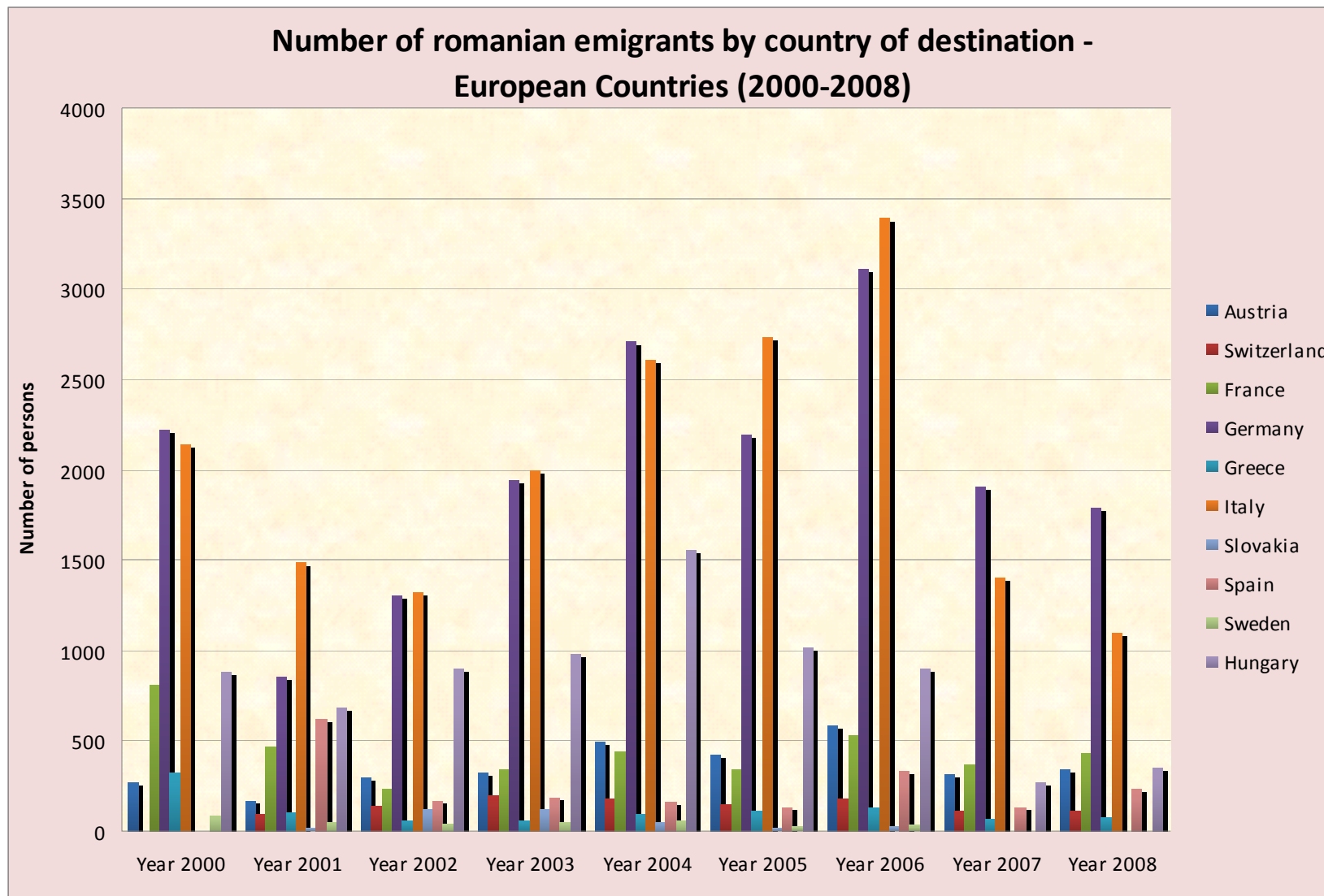


Figure 1. Number of romanian emigrants by country of destination – European Countries (2000-2008)

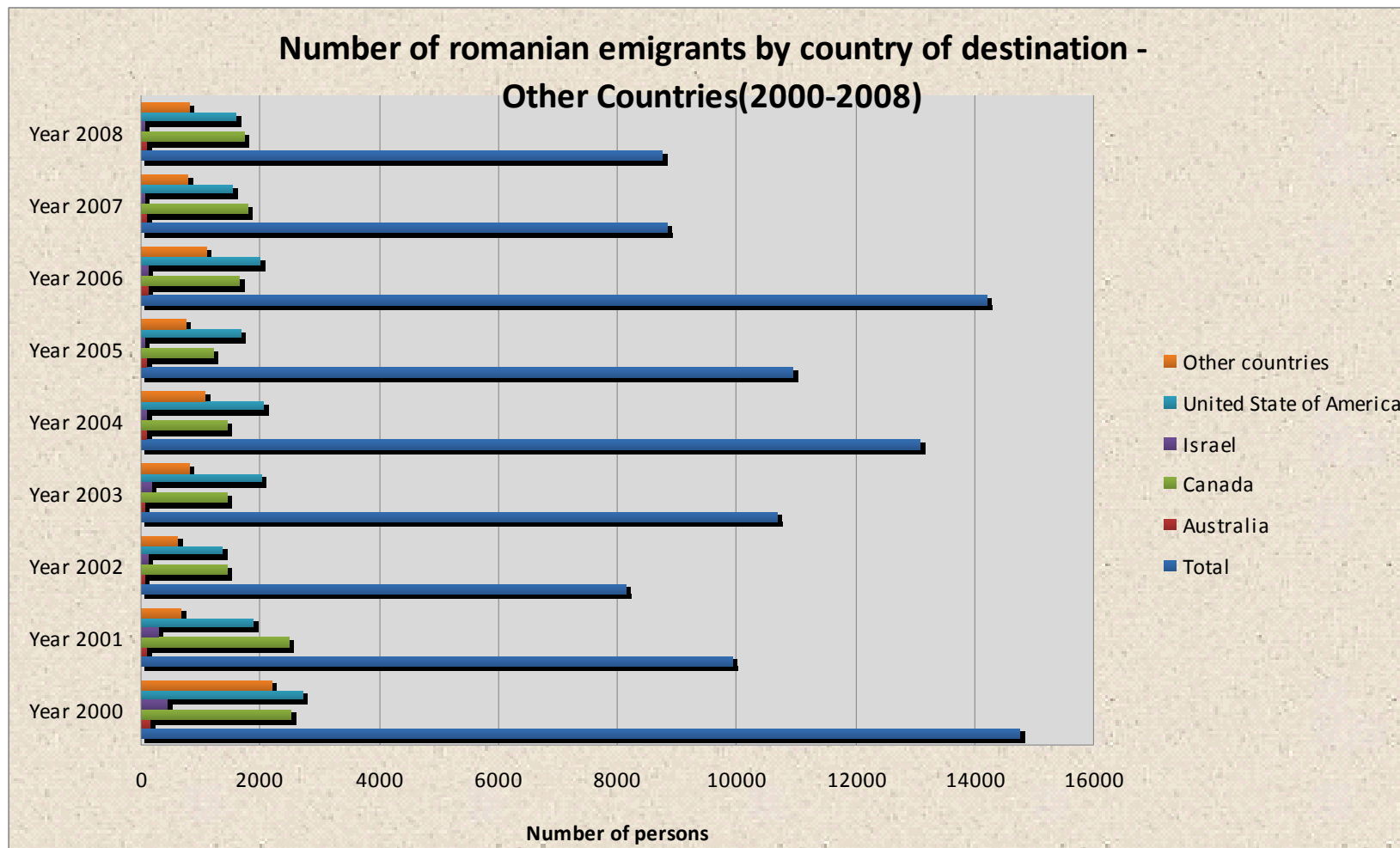


Figure 2. number of romanian emigrants by country of destination – Other countries (2000-2008)

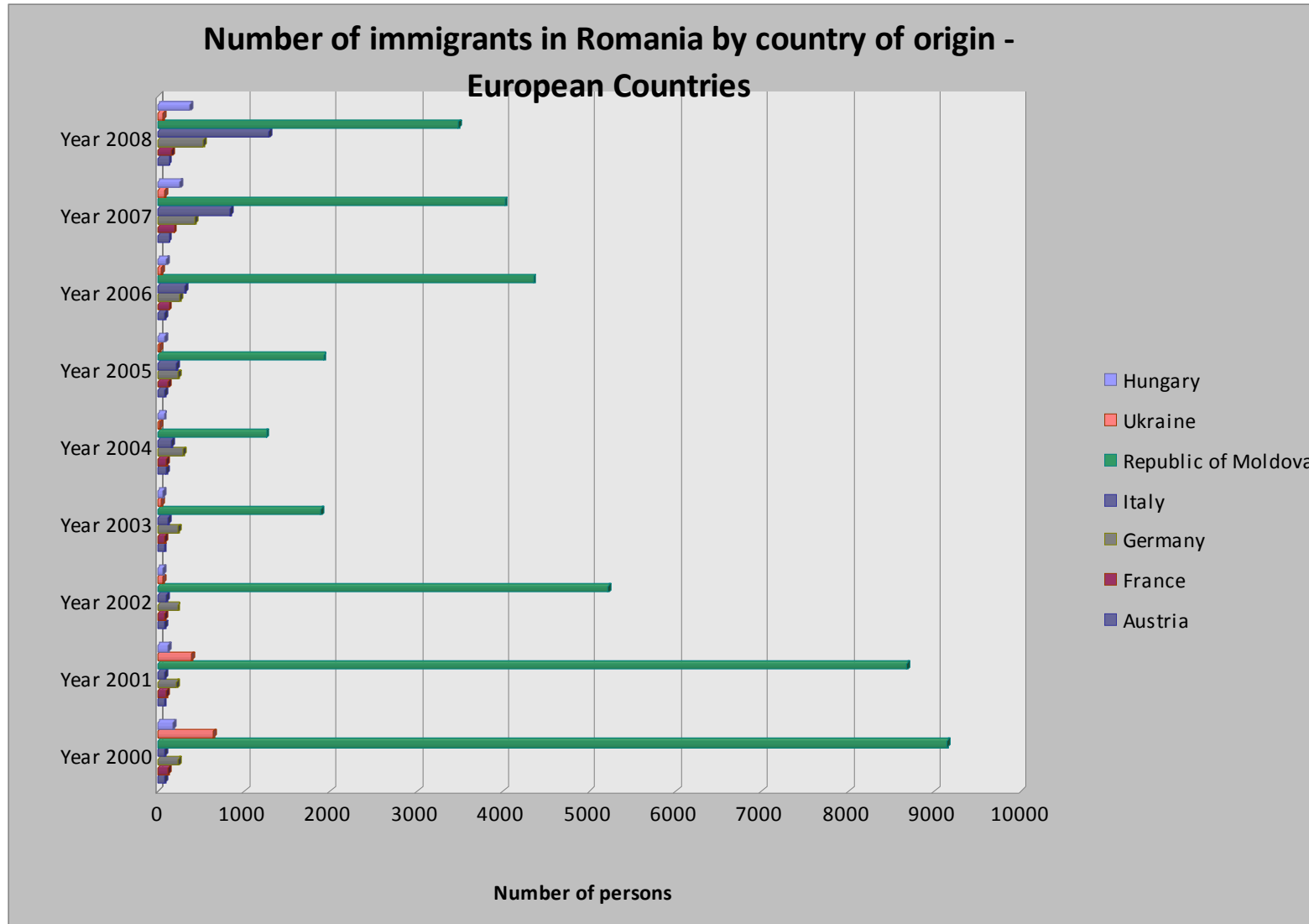


Figure 3. Number of immigrants in Romania by country of origin – European Countries

Intensity of migration flows depends between other factors, on geographical proximity and linguistic (Italy) and historical ties (for example the existence of a strong German minority in Transylvania, Centre and West sides of Romania).

In a first phase in the early '90s, ethnic motivation was the main factor for supporting of a high level of external mobility by change of address. The most largest leaving flows started in areas with high ethnic concentration, especially in Transylvania, mainly to Germany and Hungary. On the other hand there were in this period significant return flows of Jews.

In a second phase, after 1994, permanent migration is strongly reduced, mainly becoming temporary migration for work, often motivated by the professional affirmation and by chances of big earning, and favored in recent years by liberalization of the movement of Romanians in Schengen area, and after 2007 by Romania's accession to EU.

Regarding the immigration, most of the foreigners with temporary residence on Romanian territory in 2007 (Constantin, 2008) originated from the Republic of Moldova (11,852), Turkey (6,227) and China (4,336). The number of citizens of the Republic of Moldova temporarily living in Romania is also increased by the many pupils and students studying in Romania (5,725 in 2007, according to the statistic data held by the Ministry of Education, Research and Youth).

Permanent legal immigration has an opposite way comparing to that of permanent migration: after 1991 migration decreases, and immigration is steadily rising, with the exception of a temporary decline in 2004-2005. The two migration flows tend to equalize in the 2007, the final loss of indigenous population being compensated by definitive immigration through change of address.

The actual extent of migration is difficult to estimate for Romania, the records providing statistical data only for final migration. The official figures for migration reflect only a small fraction of the actual size of the phenomenon. For example, Spain, although it is not among the first destinations of permanent emigration flows is with Italy, the largest receiver of temporary emigration for Romanians.

Many Romanian citizens already emigrated to the EU for work during the past years, which indicates the fact that many of the ones who intended to emigrate have already emigrated and that there is a limited potential for new emigration waves. Taking into consideration the current economic condition, it is possible that a future decrease in the demand for labour force in the EU will decrease the migration of the labour force and even lead to the return of some emigrants back to their country.

During the transition period in Romania, the labour force movement abroad intensified, regardless of the risks that migrant workers are exposed to. Many Romanian professionals (doctors, researchers, IT specialists, nurses) immigrate to the European Union member states, mainly to Spain and Italy, but also to Canada and to the U.S.A.

Regarding Italy, one of the largest receiver of emigration from EU, it is to underline that Romania has the first position in the top of immigrants, with 555997 persons, we mean 15.1% of total immigrants number, followed by Maroc (387031 persons) and Albania (381011 persons), according to Statistica Caritas – Migrantes, 2009.

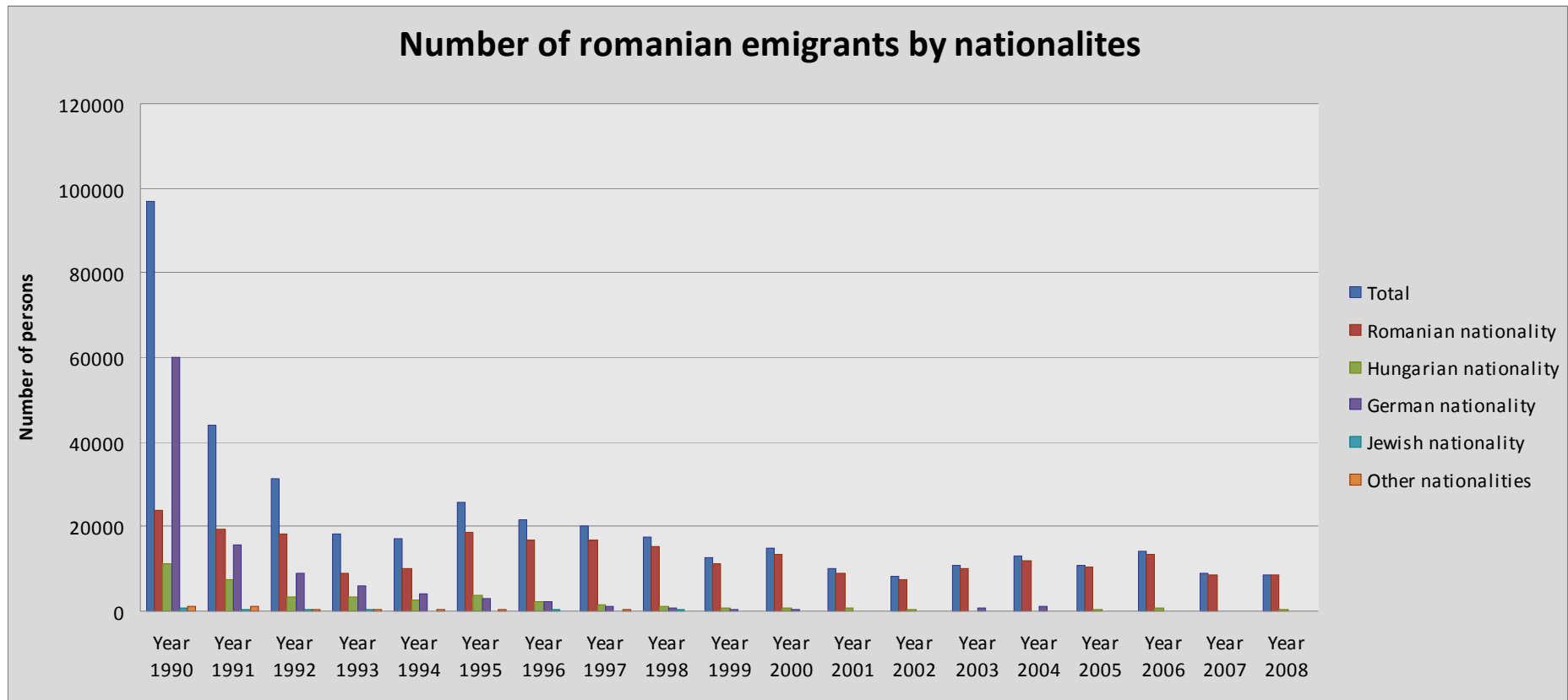


Figure 4. number of romanian emigrants by nationalities

From a demographical perspective, this movement is to Romania's disadvantage: on one hand, because it loses a significant number of highly trained professionals, and, on the other, because of the rather high costs involved in bringing professionals from other countries to occupy certain positions.

Another concerning aspect of the migration of labour force from Romania is the fact that people between 26 and 50 are leaving together with their families and children under 18. The labour force loss is thus doubled, since the young resources of our country are employed by the countries where they emigrate.

On the other hand, the advantages of the labour force migration cannot be underestimated:

- emigrants leave vacancies behind or decrease the unemployment rate;
- the increased income of the emigrant population leads to an improvement in the standard of living, to an escalation in the house building and sales of appliances and goods to equip them, of cars, it stimulates consumption.

In Romania, as compared to West European countries, the aging of the population was delayed. The phenomenon of demographic aging of the population is a result of decreased fertility and increased life expectancy. The combined effects of the two processes lead to a reduction in the young population and an increased share in the older population. An continuation, in the near future, of the fertility decrease phenomenon (of the young population share within the total population, respectively) and an increase in number and share of the older population (due to a life expectancy higher than the present one), will lead to a older population larger than the younger one, which situation can be qualified as serious demographic imbalance.

In the period between 1992 and 2002, the impact of the transition and the economical decline lead to a serious reduction in the activity and occupancy rate, the job safety becoming delicate and unemployment chronic. During this period, as a "solution" in the fight against unemployment, the number of people on anticipated retirement increased, further to a permissive legislation. This is, in our opinion, the main cause of the increase by 7.4% in the share of retired people in the inactive population at the 2002 Census of Population and Housing as compared to 1992.

The threefold increase of the inactivity rate with the population of 65 and older, from a 5.5% in 1992 to 15.2% in 2008 intensifies the process of demographic aging of the active population in Romania.

The strong internal and external migratory flows of the population after 1989 lead to a massive depopulation of the rural environment, taking into consideration the size of these population flows (especially the younger population) from the rural to the urban, during the first years after the revolution.

As far as the occupied population is concerned, the main shifts in economic characteristics of the active population of age groups are:

- in agriculture the shares of older occupied population (55-64 years, 65 years and older) have maximum rates as compared to the other young and adult age groups.
- demographic aging of the occupied population in the main economic sector, lack of financial resources of the actual land owners, as well as the limited access to irrigation and automation systems, were the major causes why this sector was "destroyed".
- shares of older occupied feminine population outruns the masculine ones throughout the entire analysed period.

The analysis of the active population according to the level of education shows an increase in the share of active and occupied population with higher and average education in the total of active, occupied respectively, population.

Mutations occurred in the structure according to the professional status are significant for the period of economic, social and political transition that Romanian underwent.

It is to be noted that there was an increase in the share of masculine occupied population with the self-employed status (in 2007 it reached a 25.4%). The specific weight of the occupied population according to the professional status – family worker in self-owned household – in the total of the occupied population shows an aging and feminization tendency similar to that in the occupied population in agriculture and in rural areas.

The active population aging process as a strong and sustainable impact on the social, health, education, family behaviour, retirement system and social security fields, etc. The main factors in the aging of the active population are: demographic, economic, political or social.

Concerns related to the challenges put forward by the aging of the active population became a priority in the public policies debate in many countries, in view of the fiscal reliability of the public retirement systems, in particular, in developed countries (industrial countries) and not only, of the creation of vacancies, extension of the retirement age, of the conditions for participation in the economic, social or civil life for elders. Therefore, policies need to be inclusive, not exclusive.

In 1990, the difference between the number of retired people and the average number of employed people in Romania was of 4477 people, followed by an ascendant trend in the number of retired people and a descendent one in the number of employed people, until 1997, when the level of the two was nearly even, around the number of 5500 people.

This was due to the restructuring or liquidation process that inefficient companies underwent in 1997 (especially in the mining sector – according to Ordinance no. 22/1997), and the registered unemployment rate went up to 8.9% (from a 6.6% registered in 1996). Many of the ones who were in this situation, and were getting close to the retirement age, chose retirement to avoid unemployment.

In order to handle the challenge of the aging population, the Special European Council held in Stockholm, in 2001, decided to make an evaluation of the social costs. It was drawn up by the European Commission, together with specialised bodies, in 2008. The result of the evaluations for public expenses related to retirement are expected to increase between 5 and 10 in the GDP percentage points in five member states (Ireland, Malt, Spain, Romania, Slovenia).

According to the mentioned reference scenario, based on actual policies, public expenses for long term care are estimated to double, and increase from 1.2% of the GDP in 2007 to 2.3% of the GDP in 2060 in the entire EU. The estimated changes vary to a less than a quarter of the GDP in Bulgaria, Estonia, Cyprus, Portugal and Romania.

The construction of an Enlarged Europe cannot be accomplished without a consensus with regards to international migration, without drawing up a common policy on migration. Promoting the spirit of EU migration policy involves: analysis of all process steps belonging migration; capitalizing of its advantages; application of effective measures related to – legal migration, human trafficking and asylum application (in Romania was agreed the National Strategy for Immigration in 2007-2013, HG 1122).

Information on actual migratory flows, on their specifics and dynamics, allows the defining and adjustment of balances in the economic and social environment. Migration can (no longer) be considered a spontaneous, unpredictable phenomenon, as circulation of people is determined by various causes: historical, behavioural, socio-economic etc.

In this context, Romania should undertake its role of eastern European Union border, since it is common knowledge that, from a demographic perspective, as well as in view of the economic difficulties, Asia may be considered as the main migratory reservoir for the 21st Century.

1.1. Romanian Macroregion 2 composed of Nord-Est and Sud-Est Regions

The case study refers to Macroregion 2 which includes regions Nord-Est and Sud-Est that is, the North-Eastern and South-Eastern parts of Romania bordering on the North to Ukraine, on the East to the Republic of Moldova and Ukraine and on the South to Bulgaria, in this last case there is a natural border of the Black Sea in the South-Eastern part.

The very diverse geographical relief as well as the diverse historical circumstances of development require a differentiated approach to this area, that is, of the two NUTS 2 regions called Nord-Est and Sud-Est. In fact, Macroregion 2 covers the territory of some old historical provinces with a very rich cultural heritage.

For strictly methodological reasons, after the events of 1989, the option was made for a random administrative-territorial partition of the territory, without taking into account unfortunately the border of the old historical provinces (as it was done in other countries, like Germany, with the well-known Land Bayern). The criteria underlay the formation of units of the NUTS 2 and 3 type were more of a statistical nature, in an attempt to create some entities that should be close in point of physical area, number of inhabitants, inclusion of some significant urban centers and only laterally the geographical borders of some well-known historical areas. In the opinion of many Romanian specialists, geographers, historians, sociologists, it would have been possible to have at least NUTS 2 type of entities on the territory of the historical provinces, (some of them having been self-standing provinces), that is, Banat, Bucovina, Crişana, Dobrogea, Maramureş, Moldova, Muntenia, Oltenia and Transilvania.

However, it is worth mentioning that the European Commission raised the issue of the veridicity of the current borders, in the case of Romania.

However, the will was to carry out some balanced development by eliminating regional disparities which (in the opinion of the political decision makers) could be better analyzed in the form of counties, units that lay at the basis of policy off regional development in Romania. As a matter of fact it would have been quite difficult to choose some administrative territorial units at the level of NUTS 2 and especially NUTS 3 that should not have gone beyond the borders of some provinces or historical areas. In this way, the regions and counties of Romania are situated in areas which sometimes include areas of different historical zones.

This is also the very case of Macroregion 2, and the two regions NUTS 2 inside it, Nord-Est and Sud-Est. Therefore, regions Nord-Est covers a

great part of the old province of Moldavia and part of Bukovina. The region of Sud-Est covers also a small part of Moldavia (the southern part), Dobrogea and a small part of Muntenia, the differences are of an economic nature (Nord-Est for instance is the least developed region of Romania) geographic nature (Nord-Est has mountains, plains and hills) and Sud-Est has almost all landforms: mountains, plain, plateau, sea - which give a special aspect to the region, at the same time the region is crossed by the River Danube which forms the beautiful Danube Delta), of a historical and cultural nature (traditions preserved with consistency).

Under these circumstances we will analyze separately the regions of Nord-Est and Sud-Est as part of Macroregion 2, as follows.

1.2. Historical and economic background of Macroregion 2

1.2.1. Historical and economic background of Nord-Est Region

The North East Region covers mostly the historical regions of Moldova and Bucovina, representing 15,5% of Romania's total area.

The region is comprised of 6 counties: Bacău, Botoșani, Iași, Neamț, Suceava and Vaslui.

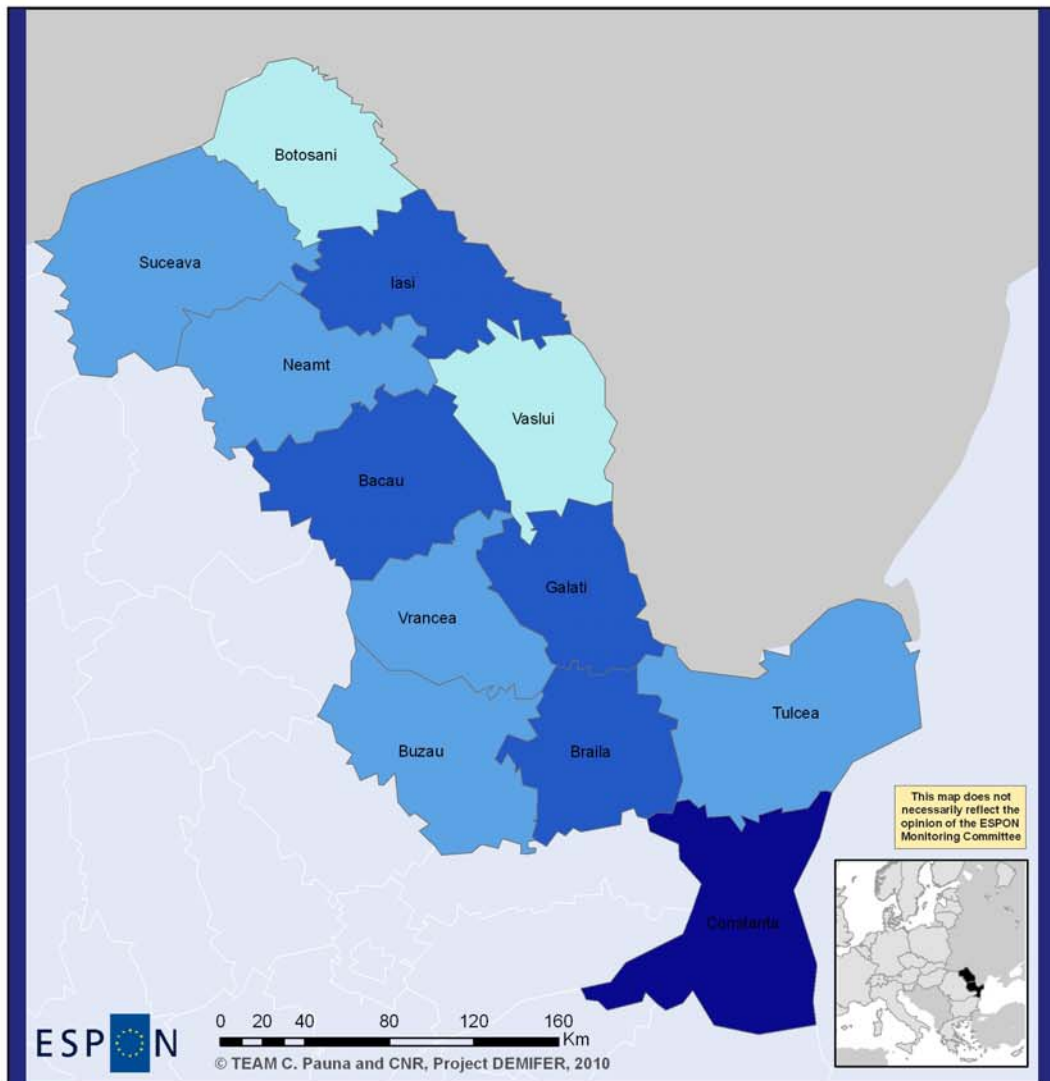
Geographically, the region neighbours Ukraine to the north, Galați and Vrancea Counties to the south (Sud-Est Region), the Republic of Moldova to the east and, to the west, Maramureș and Bistrița-Nasaud Counties (Nord-Vest Region) and Mureș, Harghita and Covasna Counties (Central Region).

The territory of the region holds major mineral resources and useful substances (coal, peat, crude oil, natural gas, building stone etc.). Also, there are several mineral water springs, as well as carbonated water. The region is characterized by a high hydroelectric potential. The mountains foster a rich flora and fauna.

On January 1st, 2009, the total population of the Nord-Est Region amounted to 3,714,050 inhabitants, representing 17.29% of the population of the entire country. It is the first region in the country in number of inhabitants. The share of urban population is of 43,6%, and that of the rural population of 56.4%.

The geographical and historical conditions caused a major socio-economic delay of the Nord-Est Region. The economy of the '60 was characterized by the prevalence of agriculture and a very low standard of living. Between 1965 and 1985, the region underwent forced industrialization, intended to improve the economic situation, by acquiring modern production equipment, at the level of developed countries, which lead to

the creation of an industrial culture, the qualification of the labour force and training a high number of specialists. However, the industrial development was far too diverse and did not take into account the specific conditions and natural, energetic and environment resources existing in the region.



GDP 2007 (in PPPS)



Map 1. GDP / capita 2007 (in PPS) of the Macroregion 2

It was found that the period 1998-1999 was marked by recession, both regionally and nationally, and by the consequences of the exchange-rate liberalization, as well as those of the restructuring programs for companies with losses, initiated during 1997. Faulty management, caused by the reluctance in implementing the production and product quality assurance system, the company development strategies, of employing marketing principles in promoting products, together with the loss of markets and the reduction in the competitiveness of the products, added to the lack of resources to maintain investments, lead to a major industrial decline, as of 1997, with major implications on the development of the region in any other fields. In 1999 the regional economic decline was 50% higher than the decline registered at national level.

The decline in 2000 was much lower than the decline during the previous year, of 2.51%, given the fact that the economic increase of 2.06% was recorded nationally. During 2001-2005, a continual economic increase process is registered on two various time slots, 2001-2003, on one hand, with yearly increase rated even higher than the national increase rate, and 2004-2005, on the other hand, with lowering yearly increase rates, inferior to the national average, which indicated a saturation level of the regional economy.

The assessment of the data for previous years shows that the gross domestic product per capita in the Nord-Est Region has, up to the present time, the lowest level of the 8 regions, with a maximum of 72.3 % and a minimum of 68.39% from the value of the GDP/capita recorded nationally, placing it last from this perspective. Just as in the section dealing with the gross domestic product by region, this situation also shows that an increase of the GDP/capita took place between 2000 and 2003, being followed by a decrease. It is however common knowledge that the Nord Est Region is the last in the hierarchy of European regions, from the perspective of the GDP/capita.

Constructions and transport are the branches generally recording an economic increase starting with 2000, due, on one hand, to the high demand for the creation, restoration and development of the physical infrastructure, and, on the other, to the intensification in the commercial flows.

Commerce ran a long period of decline, with decrease amounting to 14% in 2000, followed by a sudden increase by 35%, in 2004, when the population purchasing power increased.

Services (except constructions, commerce) are the ones who generally counterbalanced the negative evolution of the main sector, due to their positive contribution (increases up to 24% in 2003 and 13% in 2005).

1.2.2. Historical and economic background of Sud-Est Region

The Sud-Est Region has an area of 35 762 km², representing 15% of the total area of the country. The region neighbours the Nord-Est Region to the north, the Central region to the west, the Sud Region and Bucharest Region to the south-west, Bulgaria to the south, Ukraine and the Republic of Moldova to the north-east and the Black Sea shore to south-east.

The Region is comprised of 6 counties: Brăila, Buzău, Constanța, Galați, Tulcea and Vrancea.

The Black Sea Coast is located on the territory of this region. North Dobrogea is the home of the oldest rock formations in Romania, residing in mountains, plateaus and hills, and the Baragan plain to the south-west. It is also the place where the Danube flows into the Black Sea, through three branches (Chilia, Sulina and Saint George), which form the Danube Delta.

Natural resources are represented by: iron ore, copper pyrites, complex lead and zinc sulphates, quartz, granite, marble and a diversity of lime stone, kaolin, and barite. The Black Sea continental platform holds major mineral and hydrocarbon deposits. Liquid and gas hydrocarbon deposits are located in Braila, Buzau, Vrancea and Galati counties. The only surface oil reservoir is located in the Berca and Monteoru areas, in Buzau county.

A sulfurous geothermal spring, of exceptional therapeutic qualities was found in Insurăței (Brăila County). The water and the mud in the Techirghiol, Nuntași, Lacul Sărat, Movila Miresii, Amara and Balta Alba salty lakes are renowned for their therapeutic effects.

Major quantities of salt are extracted from: Sari – Bisoca, Manzalesti and Viperesti. More than half of the fertile fields in the Baragan Plain, known as "the country's granary", are located on the territory of the Sud-Est Region.

The region includes a series of protected areas, with a flora and fauna considered to be unique in Europe, representing exceptional touristic attractions. The Danube Delta Biosphere Reservation and The Balta Mica a Brailei Natural Park are among them.

On January 1st, 2009, the total population of the Sud-Est region was of 2,812,755 inhabitants, representing 13.1% of the country's total population. The region is third in the country in number of inhabitants. The share of urban population is of 55.5%, and that of the rural population of 44.5%.

1.3. Outline of the case studies addressed to the Macroregion 2 composed of Nord-Est and Sud-Est Regions

The study was structured in agreement to the relevant issues identified in the reference terms, which we tried to provide with an answer in all required chapters.

Please note that the same structure was employed for each separate region. Chapters dedicated to each region end with conclusions to them, usually in the terms of the general tendency of the demographic phenomena registered in Romania.

2. Review of existing analysis demographic and migratory flows in the case study addressed to the Macroregion 2 composed of Nord-Est and Sud-Est Regions

The demographic issues enjoy a real interest from Romanian professional. There are designated research institutes, with the purpose of demographic research, and surveys of the labour market, health and education issues etc.

A part from that, there are licensed organisations on the premises of the specialised ministries, dedicating their more of their time to legislative aspects, and less to scientific research.

Socio-economic, competitiveness etc. analysis departments are also organised within the regional development agencies for each Romanian region, where surveys on demographic and migration topic are conducted, with specific view to draw up the optimal strategies for each region and accessing community funds for that particular field. The lack of funds and personnel makes it difficult to update the surveys. For this reason, consultancy firms, nongovernmental organisations etc. are employed, according to governmental or such other needs. Among them there is the European Institute of Romania, which drew up surveys on the labour force circulation and migration phenomena during the past years. The titles of such surveys are to be found in the bibliographical list annexed to the hereby-case study.

To our knowledge, no recent surveys on the demographic – and, in particular, migration phenomena were drawn up in strict relation to the Nord Est and Sud-Est regions, forming Romania's Macroregion 2. At any rate, most organisms specialised on migration complain with the lack of surveys, and relevant analyses. All the more, the intention to draw up surveys at a regional level was made difficult by the lack of data mentioned. In our opinion, these surveys should subsequently be

integrated, in order to have an overall image of the migratory phenomena, to rely on in drawing up the optimal strategies and policies.

3. Demographic stocks and flows in the case study addressed to the Macroregion 2

3.1. Demographic stocks and flows of the Nord-Est Region and its sub-divisions

3.1.1. Demographic aspects of Nord-Est Region

Nord-Est Region is the largest of the eight development regions in Romania, covering 15.46% of the country area, with a population of 16.94% from the total population.

Most of the population is located in the rural area, approximately 56.4% mainly working in agriculture, with a load of 48.3% and a share of the women working in agriculture about 56.8%.

Demographically speaking, the region follows the national decrease trend based on a lower birth rate, yet major changes take place in the structure of population per age groups in that it refers to a decrease of the young population and the raise of the rate of adult and aged population as a slow and continuous process.

Starting with 1 January 1998, the total population in the Nord-Est Region was 3,785,530 inhabitants, representing 16.7% of the total population of the country, and reaching 3,719,102 inhabitants in 2008 (as 17.29% of the country population). As for the number of inhabitants, the region is at the top for the whole country. The population of the region is located in 46 urban areas, 506 large villages and 2.414 villages. The ratio of rural population in 2008 is 56.8% in the total population.

Regionally there is a raise of the total population in between 1998-2001, followed by a sinusoidal variation during 2002-2008. Surprising is the evolution for the urban-rural segment. Thus, if in between 1998-2000 we note a low decrease of urban population compared to the rural one, and in 2001 a pause, 2002 marks a clear decrease of urban population with 8.32% followed by another pause in 2003, a clear raise in 2004, based on converting some large villages in towns, and a low decrease in 2005, followed again by a raise in 2006 and 2008.

Table 1

Natural movement of the population in Nord-Est Region 2008

	Born- alive	Deaths	Natural raise	Marriages	Divorces	Born- dead	Deaths under one year
Romania	10.3	11.8	-1.5	6.9	1.66	4.5	11.0
Nord-Est	11.5	11.0	0.5	6.6	1.86	3.5	11.1

Source: Annual Statistic Record of Romania, 2009, National Institute of Statistics

Looking at the evolution of female population, there is a trend similar with the trend of population at urban level. The population in towns is grouped in more developed urban areas. This migration from town to village came up as a need for a segment of the population to cover conditions of subsistence, given massive lay offs in the industrial sector (mainly located in urban areas) at the same time with the application of the restoring the agricultural lands.

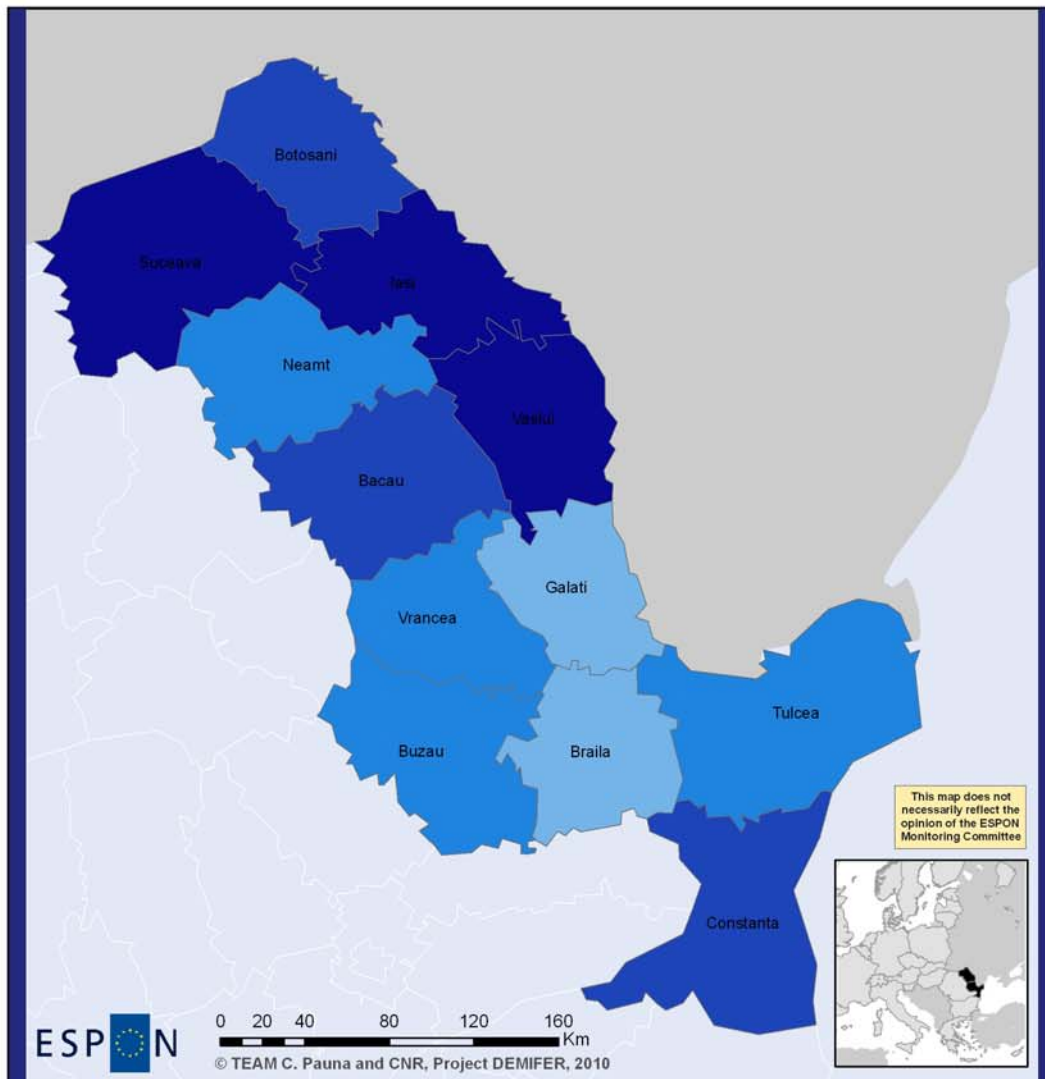
In 2008, the region has a medium density of 100.9 inhabitants/km², with a higher rate than the country average (90.2 inhabitants/km²). The county with the highest density is Iasi with 150.9 inhabitants/km², and the lowest is Suceava with 82.6 inhabitants/ km². In 2008, the natural raise in North-East is 0.5 for one thousand inhabitants, being the only region in Romania with a positive score. Instead, the rate of infant mortality in 2008 is 11.1 deaths (under one year) in North-East for 1000 inhabitants, while the national average is 11.0.

This can be explained by the high level of poverty, mainly in the rural areas, and the insufficient education on health and hygiene. The structure of genders globally in this region highlights a balanced distribution of population in the Nord-Est, 49.41% in the total region being men, and 50.59% being women.

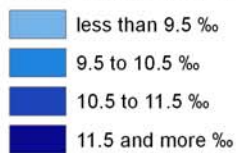
Out of the total, the rate of the young population aged 15-59 is major (63.7%), and a higher number of the aged population can be noticed, of 60 and over, as 18% in the total. An indicator pointing the development of a country/region is the human development index (HDI). This is a comparative element of life expectancy, schooling, education, and standards of life. It is annually updated by the United Nations Development Program and published in the Human Development Report. The last human development index was done in 2006, using data from 2004.

Based on existing data in the National Human Development Report – 2006, the Nord-Est Region is similar to the country average for the life

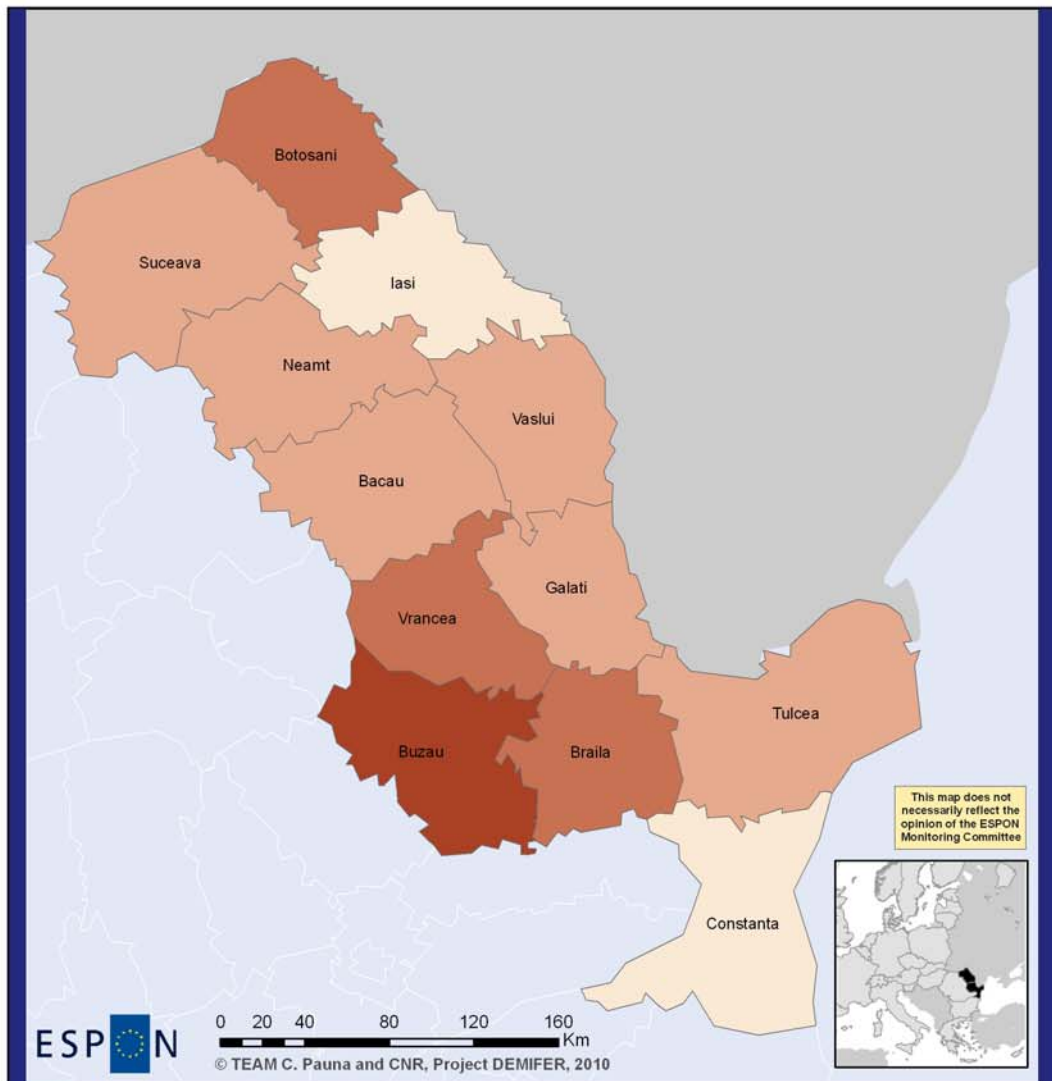
expectancy and the schooling (the ratio of those over 15 and over and who attended or graduated a school and learned reading and writing or who know reading and writing without having been to school, in the total population of 15 years and over) and with 6.5 percent under the average for the gross rate in the education (number of registered students for a certain level of education, despite being part, or not, of the age group corresponding to that level, as a percent of the total population out of that age group). For the human development index, the Nord-Est Region is the last (HDI=0.773), still higher than in 1999, when this index was 0.738.



Crude birth rate 2005-2007



Map 2. Crude birth rate 2005-2007 of Macroregion 2



EUROPEAN UNION
Part-financed by the European Regional Development Fund
INVESTING IN YOUR FUTURE

Local level: NUTS 2
Source: Romanian National Statistical Office, 2010
Origin of data: Romanian National Statistical Office, 2010
© EuroGeographics Association for administrative boundaries

Crude death rate 2005-2007

- less than 10.5 ‰
- 10.5 to 11.5 ‰
- 11.5 to 12.5 ‰
- more than 12.5 ‰

Map 3. Crude death rate 2005-2007 of Macroregion 2

3.2. Aspects related to the situation of migration in the Nord-Est Region

3.2.1. Internal migration in the Nord-Est Region

In the Nord-Est development region, internal migration caused by the change of residence affected 123,837 people in 2007 (16.54% out of internal migration recorded in Romania). Out of that 65,228 are people leaving, while 58,609 are new comers, resulting a migratory score of 6,619 people. In 2008, the internal migration covered 123,319 changes of residence.

In 2007 and 2008, internal migration was higher in Iași (28,661 people, respectively 28,758 people), Bacău (24,456 people, respectively 25,573 people) and Neamț (21,222 people, respectively 20,063 people). The lowest scores were recorded in Botoșani (14,282 people, respectively 13,804 people).

As for the migratory balance, it indicates negative values across all counties. The highest values are recorded for Vaslui (-2,387 people) and Botoșani (-1,824 people) while the lowest are in Iași (-121 people) and Suceava (-709 people).

Average internal migration has highest values in rural areas (72.748 people) compared to urban ones (51.089). The average migratory balance shows positive values for the rural areas (4.576 people) and negative ones in urban areas (-11.195 people). This implies there is a reverse departure, from rural-urban to urban-rural. The same trend is recorded in 2008.

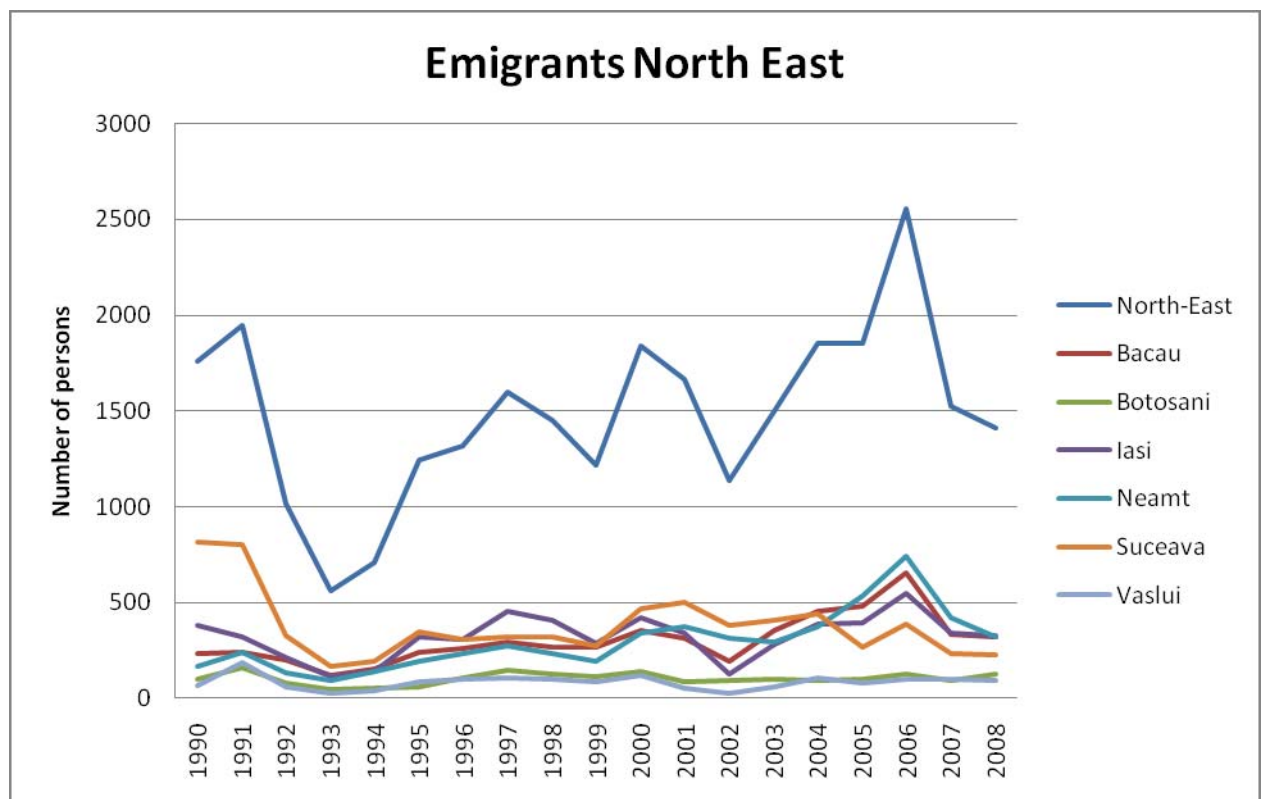
In the urban areas, the highest values of internal migration are recorded in Iași (12,295 people) and Bacău (10,176 people). The lowest values are recorded in counties with a low population in urban areas, such as: Botosani (5,656 people) and Vaslui (5,726 people). The migratory balance in urban areas recorded highest values in Bacau (-2,688 people), Neamț (-2,060 people) and Iași (-1,933 people). The lowest values are recorded in Botoșani (-1,482 people) and Suceava (-1,248 people).

In the rural areas, we have a special case, namely the migratory balance had positive values in 4 counties out of 6 in this region. A clear raise of number of inhabitants is recorded in Bacau (+1,922 people) and Iasi (+1,812 people). Vaslui and Botosani counties record negative values of the migratory balance (-603, respectively -342 people), being the only counties with negative migratory balance in both areas (urban and rural) given the low economic development. The negative migratory balance per

counties is caused by a low economic development in Moldavia compared to other regions of the country.

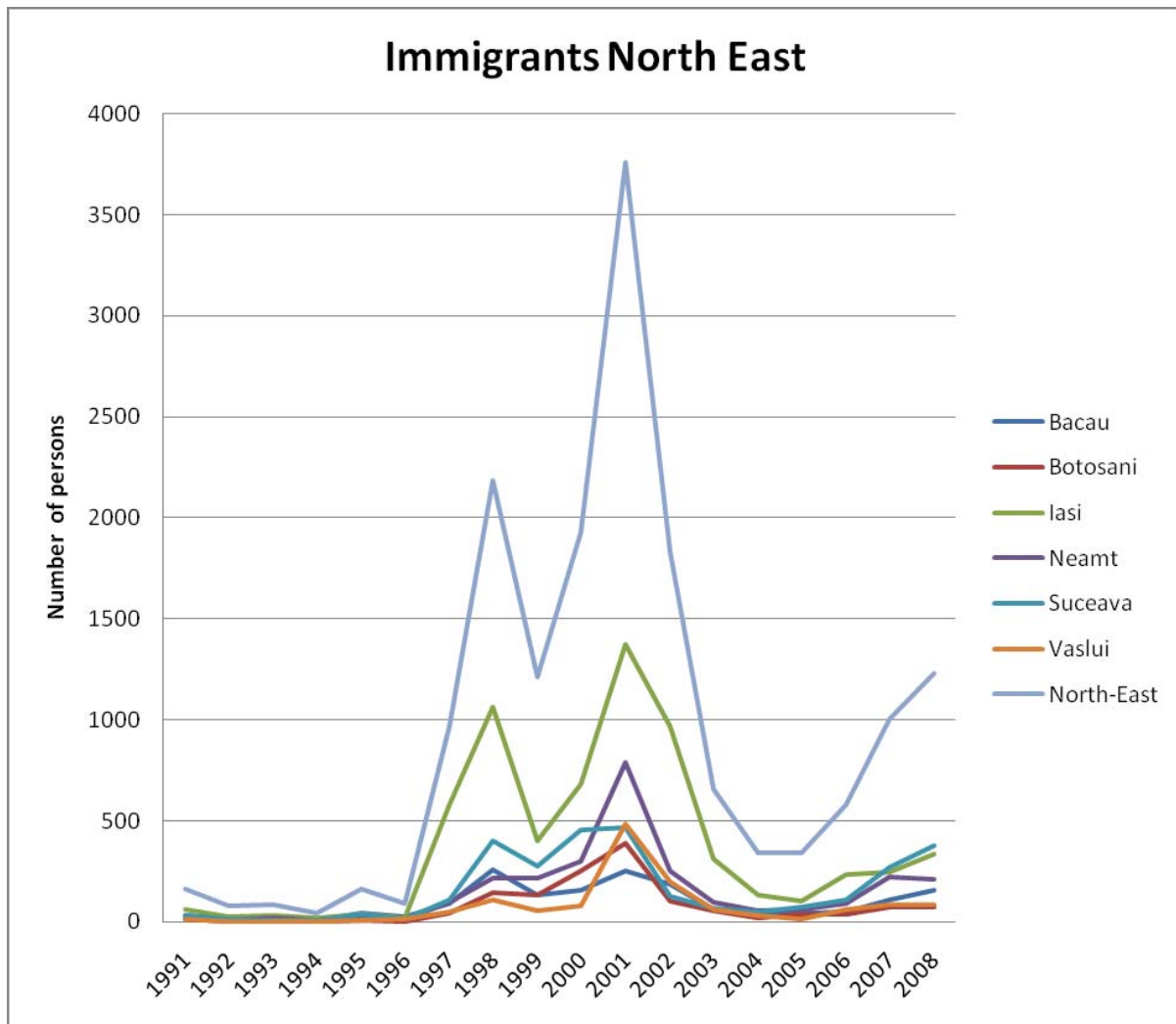
3.2.2. External migration in the Nord-Est Region

Evolution of emigrants and immigrants in Nord-Est Region



Source: Annual Statistic Record of Romania 1990 – 2009

Figure 5. Evolution of migrants in Nord-Est Region



Source: Annual Statistic Record of Romania 1990- 2009

Figure 6. Evolution of immigrants in Nord-Est Region

In the Nord-Est Region, 1,522 people emigrated (17.23% out of total) and 1,003 people arrived (10.47% out of total), resulting a balance of - 519 people. From the above-mentioned data, it results that the Nord-Est Region has quite a clear depopulation. The trend stays the same for 2008, with a low decrease of the emigrants and a raise of immigrants, resulting a lower migratory balance.

The counties with the highest values for emigrants are: Neamț (422 people), Iași (341 people) and Bacău (333 people). The lowest values are recorded in Botoșani (91 people) and Vaslui (100 people) in 2007 and some smaller figures are registered for 2008.

It is noticeable that the number of women emigrating is exceeding the number of men. 996 women left the region, while only 526 men did in 2008. The same situation is seen for the international migratory balance,

where the deficit of women (-545 people) is a lot higher than the men, which is positive as well (+26 people).

The number of immigrants is quite important for the region (1.003 people, respectively 1229 people). Most immigrants arrived in Iași (243 people), respectively 375 in Suceava, and lowest number in Botoșani (74 people, respectively 73 people). The situation is comparable also in 2008 as in the previous year.

The second most favourite location is the Nord-Est Region, as 18.2% of the total immigrants went there during the same time. In 2001, this region is placed at the top (36.3%) before Bucharest for the 1992-2002 period.

Initially, the second place was recorded by the West region, which managed to attract over a quarter of the total in 1994, but the changes in the features of immigration (which implies a lower number and distribution of new comers from West European countries and a higher proportion of the immigration from the Republic of Moldova) was the key factor contributing to being the next to last rank in 2002 (5.58%). During this time, the ranking of this region stays as the fourth (10.07%).

The flow of people over the national borders can be better evaluated if we know the trends of population.

Marking the contribution of migration to the dynamic of the total population and the potential of workforce in Romania can be explored via a comparative and mixed analysis of the natural increase and migratory increase.

3.3. Demographic stocks and flows of the Sud-Est Region and its sub-divisions

3.3.1. Demographic Aspects of the Sud-Est Region

As the second largest Romanian region, the Sud-Est Region covers 35,762 Km², representing 15% of the country's total area, and a similar percentage goes to the share of population. Thus, in 2008, the region had a population of 2,819.565 inhabitants, representing 13.11 % of the country's population; the density of 78.8 people per km² is below the country average (90.2 people per km²), the highest population density being recorded in Galați County (136.9 people per km²), dominated by the homonymous industrial and commercial centre, and the lowest, in Tulcea Country (29.3 people per km²), where natural and economic conditions are less favourable. Towns gather up 55.1% of the population, with a declining tendency.

Table 2. Natural movement of the population in Sud-Est Region 2008

	Live Births	Decreases	Natural Growth	Marriages	Divorces	Dead Births	Deceases below 1 year
Romania	10.3	11.8	-1.5	6.9	1.66	4.5	11.0
Sud-Est	10.0	11.6	-1.6	6.7	1.89	5.1	13.0

Source: Romania's Census Yearbook 2009, INS (National Institute of Statistics)

An analysis of the natural movement of the population indicates a very high rate (the highest out of all the regions in Romania) for the infantile mortality indicator (13 ‰ as compared to 11‰ in 2008).

Demographic migration is another social phenomenon found during the past few years in the region, especially among young and adult population (19-49 years), from the rural to the urban areas, being motivated by the living and working conditions provided by urban centres, which leads to an aging of the population in rural areas. A positive balance of internal migration, in the total of the population, was recorded in Vrancea County: 83 people (meaning that there were more people coming than going away). There are significant differences in the distribution on the two residential areas, between the counties in the Sud-Est Region, in 2008: counties such as Brăila, Constanța, Galați, with a prevalence of population residing in the urban areas and counties such as Buzău, Tulcea and Vrancea, with a prevalence of population residing in the rural areas.

It is clear that during the past 8 years, the population in the rural area was in continuous decline, reaching in 2007 the same level as in 2000. This phenomenon may have multiple causes, from the birth rate decrease to the national and international migration phenomenon. According to surveys conducted by the National Institute for Statistics, the evolution of the demographic phenomena in Romania, and implicitly in the region, during the past decades was strongly reflected in the changes occurred in the age structure of the population, with both demographic and socio-economic implications.

Thus, the population in the rural area is further aged, with a much higher average age than the one in the urban area, especially due to feminine rural population. Structural changes that took place during recent years are within the long term trend of increased aging of the population, a process typical to European populations. The effects of the demographic aging process on the economic and social life, as well as on the future demographic evolutions, are present since 2005, when the working-age population (15-64 years old) started including generations reduced in number, born after 1990.

This is a region of a high ethnic, linguistic and religious diversity: – Roma population (1.7%) – Russian community (Lipovans) (0.9%) – amassed in Tulcea area (16,350 inhabitants) – Greek community (0.1%) – Turkish community (1%) – amassed in Constanța area (27,914 inhabitants) – Tartar community amassed in Constanța area (23,230 inhabitants).

The distribution of the population in age groups shows that the Sud-Est Region has a lower prevalence as to the national average for the lots of 0-14 years old and 60 and over, and higher than the national average for the population of 15-59 years old.

3.3.2. Aspects related to the situation of migration in the Sud-Est Region

3.3.2.1. Internal migration in the Sud-Est Region

The lack of suitable jobs, unattractive wages, as well as inadequate qualifications leads to massive migrations of the active population to the economic growth areas in the country or abroad. The highest level of migration is registered in Vrancea county, especially because of the unconsolidated economic structure, where younger population massively left towns to work abroad.

In the Sud-Est development region, internal migration caused by change of residence, in 2007, involved a number of 97,652 people (13.04% of the internal migration recorded in Romania). Out of which a number of 49,533 people represent the number of the ones who left, and 48,119 people coming, with a migratory balance of -1,414 people. In 2008, internal migration caused by change in residence involved 97,271 people.

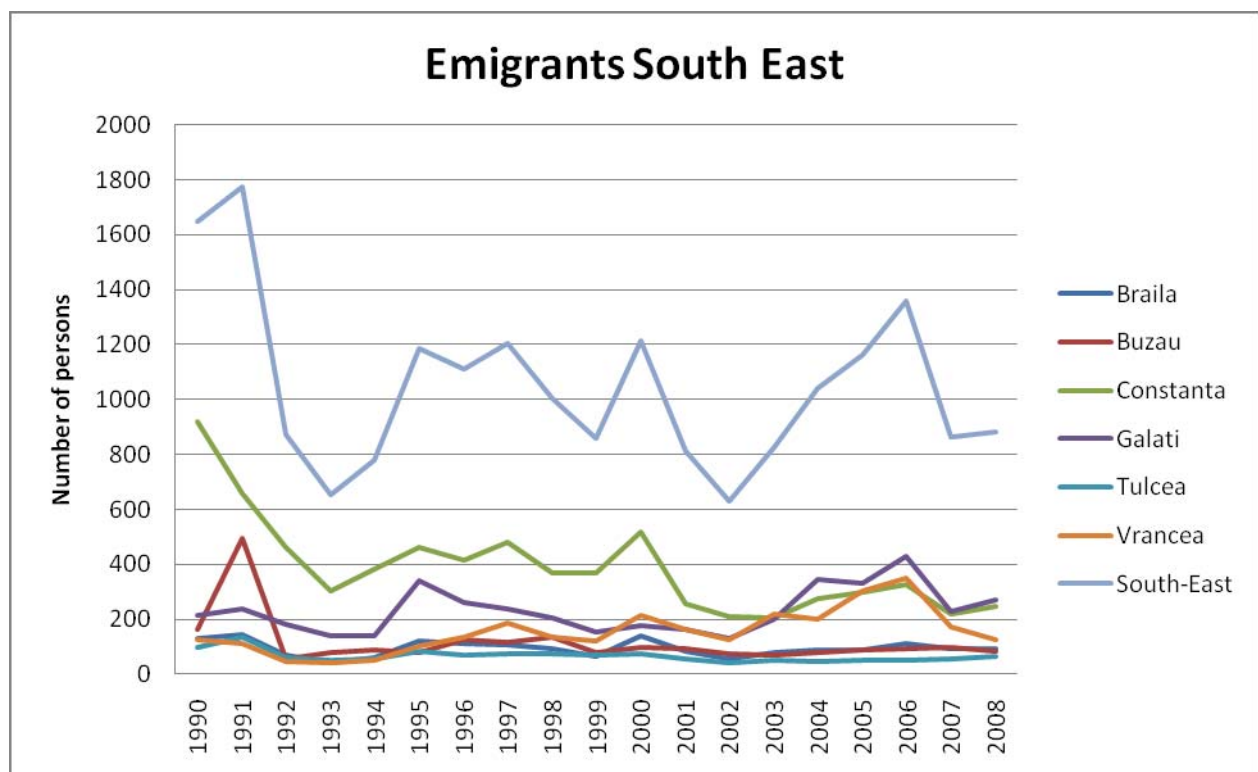
In 2007 and 2008 internal migration recorded higher rates in counties such as Constanta (27,684 people, 29,168 people respectively), Galati (18,809 people, 17,647 people respectively) and Buzau (17,534 people, 17,087 people respectively). The lowest rates were recorded in Tulcea County (9,013 people, 9,404 people respectively). The migratory balance indicates negative rates in four of the six counties in the region. The highest rates were recorded in counties such as Constanța (+1,674 people) and Galați (-1,217 people), and the lowest rates in counties such as Vrancea (+83 people) and Buzau (-352 people).

Internal migration according to areas shows higher rates in rural areas (49,968 people) than in areas (47,684 people). The migratory balance on areas indicates positive rates in the rural area (4,844 people) and negative rates in the urban area (-6,258 people). The conclusion is that we are facing a reversal of the exodus, from the rural-urban, to the urban-rural. It was a similar situation in 2008 as in 2007.

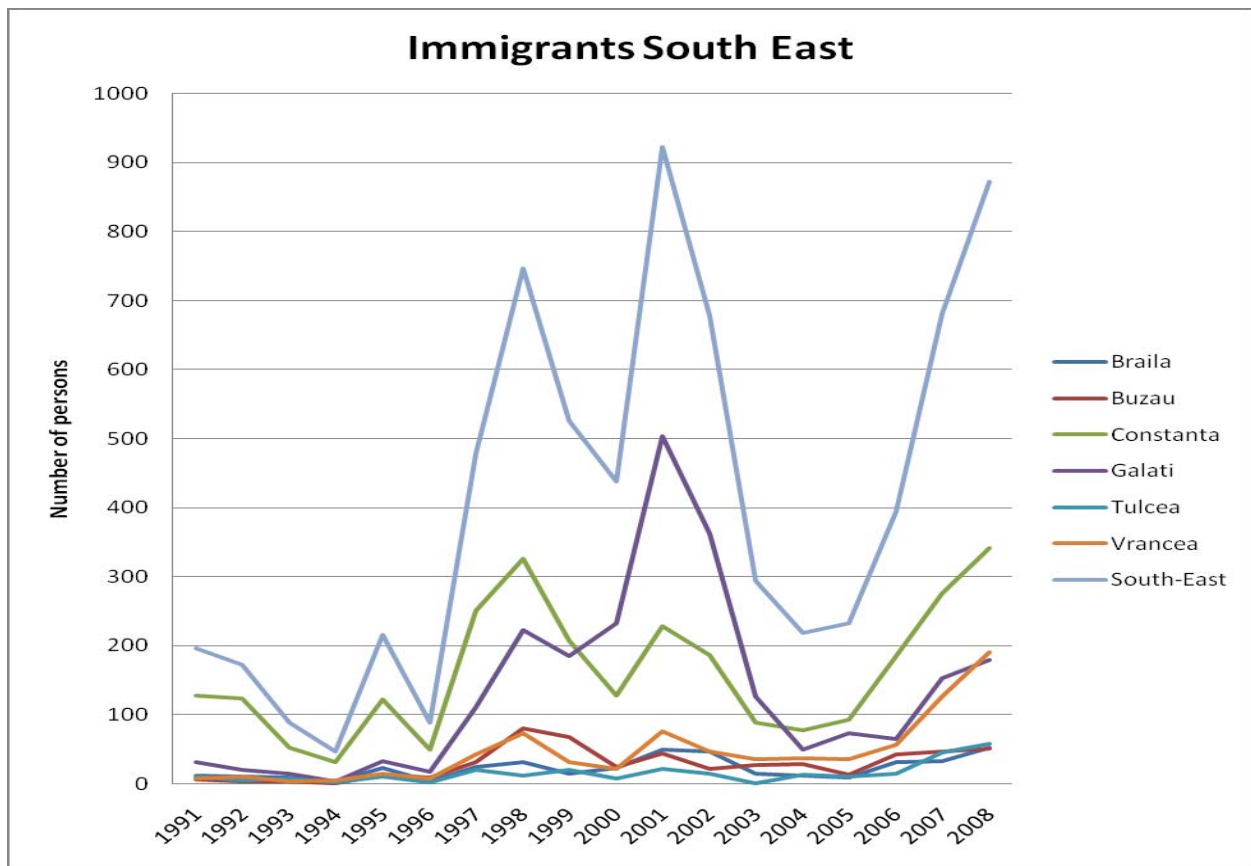
The highest rates in internal migration in urban areas were recorded in Counties Constanța (17,597 people) and Galați (8,889 people). The lowest rates were recorded in counties with a lower number of inhabitants in the urban areas, such as: Brăila (5,166 people) and Vrancea (5,572 people). The migratory balance in the urban area recorded the highest rates in Counties Buzău (-1,745 people), Galați (-1,229 people) and Brăila (-1,036 people). The lowest rates were recorded in Counties Tulcea (-663 people) and Constanța (- 781 people). The figures are quite similar in both years 2007 and 2008.

In rural areas we are facing an exceptional situation, in the sense that the migratory balance registered positive rates in 5 counties of the 6 in the region. There is a significant increase of the number of inhabitants, on this line, in villages from counties such as Constanța (+2,455 people) and Buzau (+1,393 people). A special situation occurred in Tulcea County where negative rates of the migratory balance were recorded (-160 people), and which is the only county in the regions to register negative migratory rates in both areas (urban and rural), due to the fact that it is a less developed county.

3.3.2.2. External migration in the Sud-Est Region



Source: Annual Statistic Record of Romania 1990 - 2009



Source: Annual Statistic Record of Romania 1990 – 2009

Figure 7. Evolution of the number of emigrants and immigrants in Sud-Est Region

863 people, 881 people, respectively, (9.77% of the total) emigrated from the Sud-Est Region and 681 people, 873 people, respectively (7.11% of the total) came, reading to a migratory balance of - 269 people, -220 people respectively in 2008.

The counties with the highest emigration rates are: Galați (230 people), Constanța (217 people) and Vrancea (172 people). The lowest rates were registered in Tulcea County (54 people) Brăila County (93 people).

It is notable that the number of women who emigrated significantly exceeds the number of men. 567 women left the region, as compared to 296 men. It is the same case for the international migration balance, where the women deficit (-269 people) differs from the male deficit, which is of positive value (+ 87 people).

The number of immigrants is reduced in the region (681 people, 873 people respectively). Most immigrants came to Constanța County (276 people, 342 people respectively), and the least to Brăila County (33 people), 51 people respectively in Buzău County.

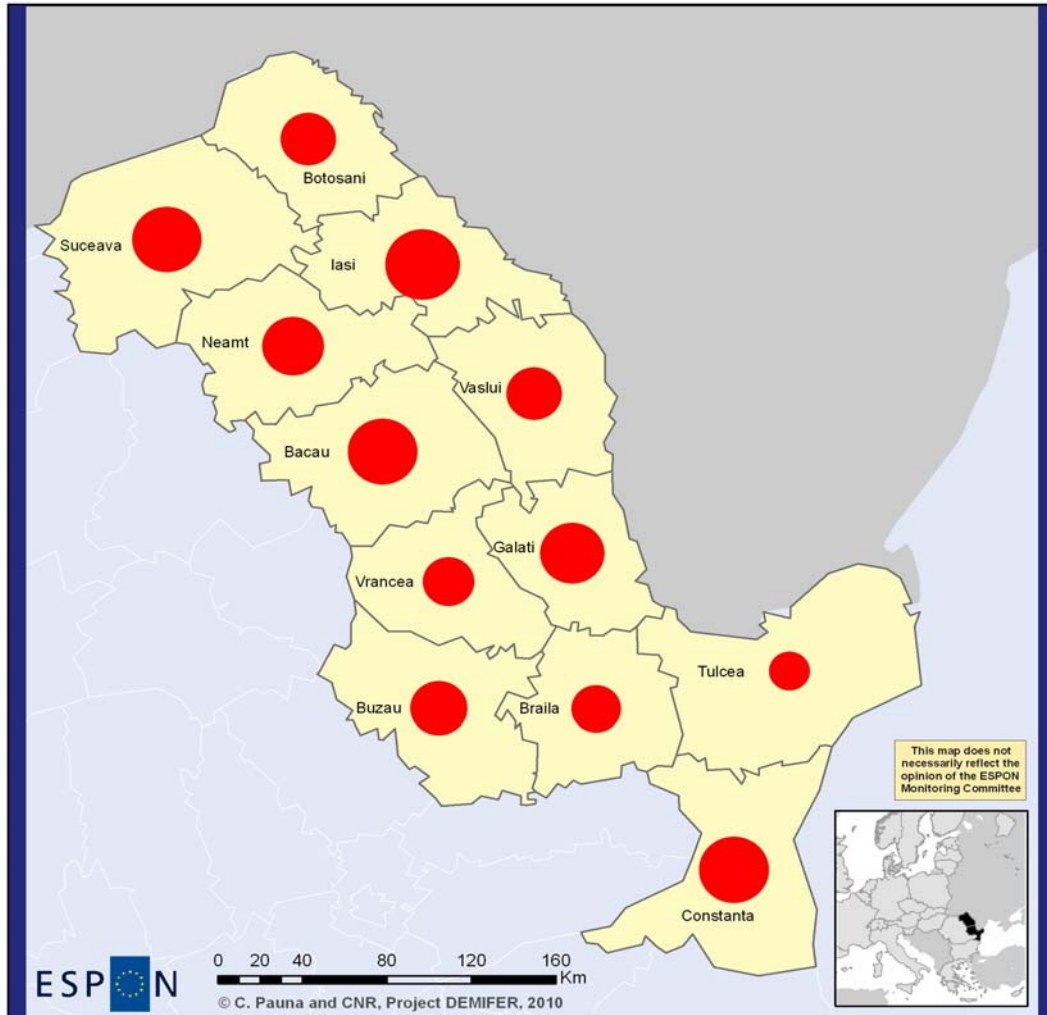
The Sud-Est Region comes fifth, for receiving 6.71% of the total cumulated immigrants; the share indicated a slight increase tendency towards the end of the period. 2004

The comparative analysis between the natural growth and the migratory growth (permanent migration) indicates the following (the data are available also for Nord-Est Region):

- the total population is declining especially due to the negative dynamics of the natural growth, rather than migratory growth;
- losses cumulated during the total period do not exceed 3% of the population of Romania registered at the last census;
- from a quality perspective, the negative migratory growth is more "expensive" for the society, that the natural growth, as the investments into the human capital (through education, etc.) made by the time of the migration and the related working potential is transferred at no cost to the destination country, adjusting, on long term, the national economy growth and the sustainable human development.

It is notable however that in most cases we're talking about temporary labour migration. The profile of the Romanian migrant can be basically described by the intention of financial and material gain, through a job abroad, with the stated intention of returning to the extended, traditional family, that the members of all generations are part of.

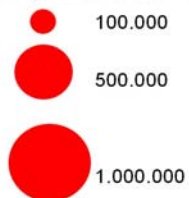
4. Economic change and population in the case study addressed to the Macroregion 2



EUROPEAN UNION
Part-financed by the European Regional Development Fund
INVESTING IN YOUR FUTURE

Local level: NUTS 2
Source: Romanian National Statistical Office, 2010
Origin of data: Romanian National Statistical Office, 2010
© EuroGeographics Association for administrative boundaries

Population 2008



Map 4. Population 2008 of the Macroregion 2

4.1. Economic change and population: the labour market of the Nord-Est Region and its subdivisions

In the last couple of years, a decrease of the working force took place (from 64.2% in 2000 to 33.8% in 2005 was the deepest decrease). A fast decrease of working population took place in Botosani, where a higher percentage of population works in agriculture (52.9%).

Corresponding to a high number of working population in the rural areas, we can notice that the working population in agriculture is prevailing.

Comparatively to the average values per region and the average per country, the highest values of unemployment are recorded in Vaslui, approximately 10.3% compared to 6.2% country average and 7.5% region average. At the other extreme, the lowest values of unemployment are recorded in Botoşani, Iaşi and Bacău.

Many of the aged people in this region work temporarily or permanently in Bucharest, Banat, Transylvania, West Europe and Israel. In Bukovina, following the migration of men able to work, a tendency of emigration is remarked for women, in search of a job abroad; that is why many locations were left with old and children. In many of those locations the work in constructions is impressive, the raw material being the wood. This means a higher disparity between the locations of the region for the general development, and mainly the infrastructure. Unemployment records rather low values compared to other regions

The Nord-Est Region is the lowest developed one in Romania (GDP/inhabitant is around 69.2% out of national average). Inside the region, the poorest areas are the South of Iaşi, the South-East of Neamţ, the East of Bacău, and Botoşani and Vaslui counties. In the West of the region, which was the key area of forced industrialization in the 60s and the 70s (furniture, chemistry, constructions, machines, textiles), a deindustrialization started in the last 10 years (companies working in chemistry, oil chemistry, light industry, machines, furniture) which worsened the economic status, the East of the region being traditionally undeveloped.

The index of attractiveness is the lowest in this region – 19.7 (the highest attractiveness being in the North –West, 39.8 according to various studies). The low attractiveness is remarked in the low volume of foreign investments that rise to 1.3% of the total direct foreign investments in Romania.

Also, the Nord-Est Region has the lowest number of SMEs for 1,000 people, that is only 13.1% compared to the total number of SMEs across

the country. Inside the region, Iași (27.2%), Bacău (20.8%) and Suceava (18.8%) have the highest number of SMEs, the extreme being Vaslui with only 8,5%.

The region also has 2 industrial parks (Bacău and Iași), 1 being a private and 1 being a public-private partnership. They cover a 22,38 ha, as a brown field. Bacău industrial park, based on IT and communications will assimilate people who were laid off and will raise the development of this sector regionally. Thus, about 50 new workers are expected for the implementation and about 200 for the operational stage. Iași industrial park is aimed at top technology industries including IT and biotechnology. There is an effort to stop the young and specialized work force migrating from those fields, by creating jobs for fresh graduates.

4.2. Economic change and population: the labour market of the Sud-Est Region and its subdivisions

In 2005, the occupied population represented 36.1% of the total population, the largest part working in services (44.5%) and agriculture (32%), followed by industry (23.5%). There's a high share of occupied population working in the services sector in Constanța and Galați Counties, due to the resorts along the sea coast and to the presence of the ports in Constanța, Mangalia and Galați. Unlike these counties, approximately 49% of the occupied population in Vrancea County works in agriculture, and 62% of the entire county population lives in the rural areas.

The labour force market plays a significant role in assuring the economic and productivity growth on long term; however, the lack of appropriate jobs, unattractive wages, as well as inadequate qualifications lead to massive population migrations to economic growth areas in the country or abroad. The highest migration was recorded in Vrancea County, in particular because the unconsolidated economic structure, where the young population massively left towns to work abroad.

In 2007, the region had a number in occupied population amounting to 1,155,000 (people), which represent 12.35% of the total national level. An intensified decrease took place regionally during 2004 and 2005, from 1,151,000 to 1,147,000, and a significant increase in 2006, the occupied population reaching a number of 1,182,000 people. Structural changes in the economy in the South East Region lead to a decrease in the unemployment rate. Thus, there is a significant decrease in the unemployment rate in the region in 2008, as compared to 2004, reaching from 9.8 % to 7.2%.

The contribution of the counties in the region to forming the GDP indicates major disparities. Thus, the contribution of Constanța county in

2006 is the highest, representing 38.05% of the regional GDP, while the contribution of Tulcea county is the lowest, of only 7.86%. The evolution of the gross domestic product shares in forming the regional GDP during the period between 2000 and 2008 reveals the fact that at Constanța and Tulcea counties registered increases in the GDP shares forming the regional GDP.

5. Economic change and population: other aspects in the case studies addressed Macroregion 2

5.1. Economic change and population: other aspects of the Nord-Est Region

Among other relevant economic and demographic aspects in the region there is to mention the evolution of the following indicators (on the basis of data delivered by the Annual Statistic Record of Romania 2009).

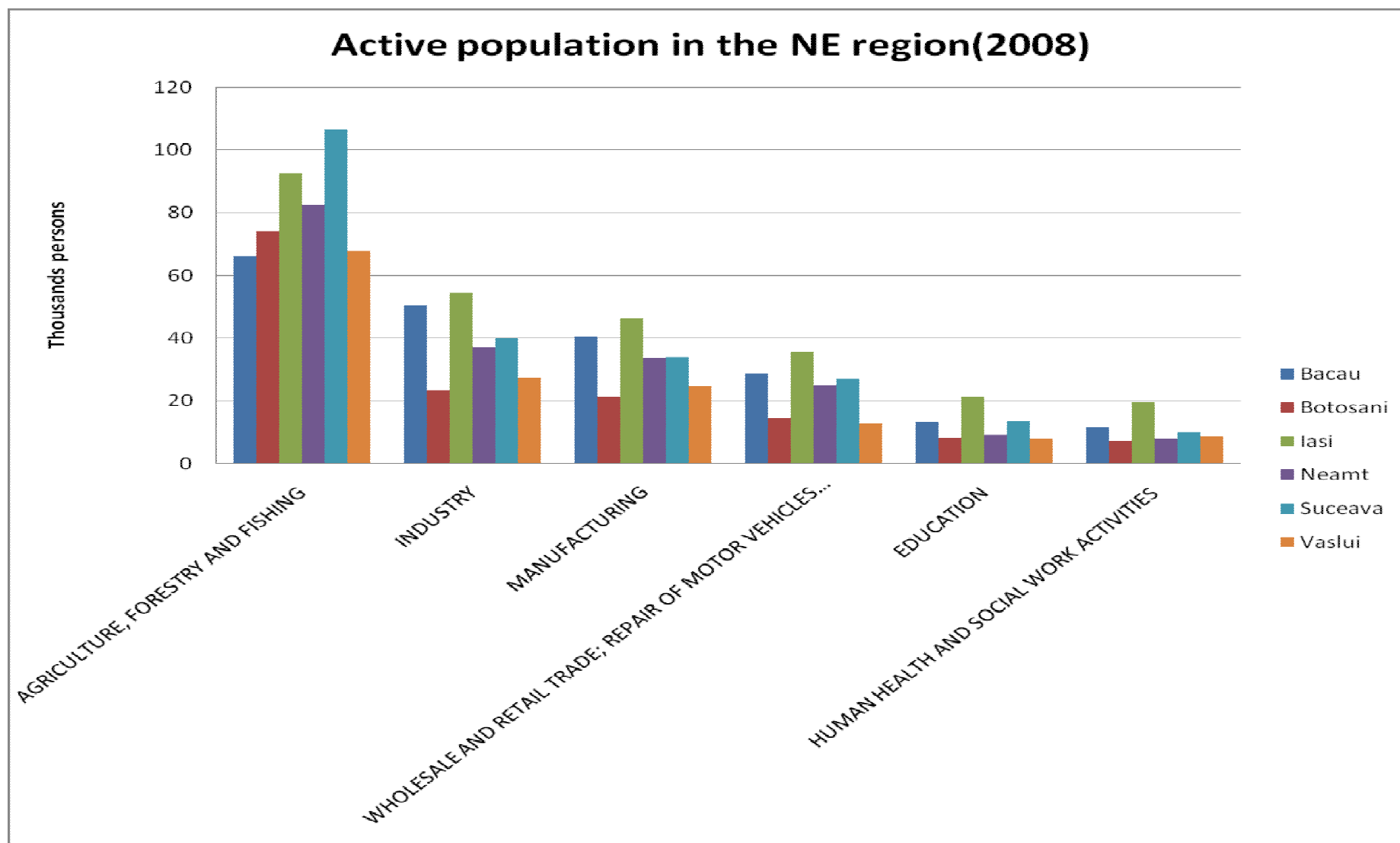


Figure 8. Active population 2008 of the Nord-Est Region (a); Source: Annual Statistic Record of Romania, 2009, National Institute of Statistics

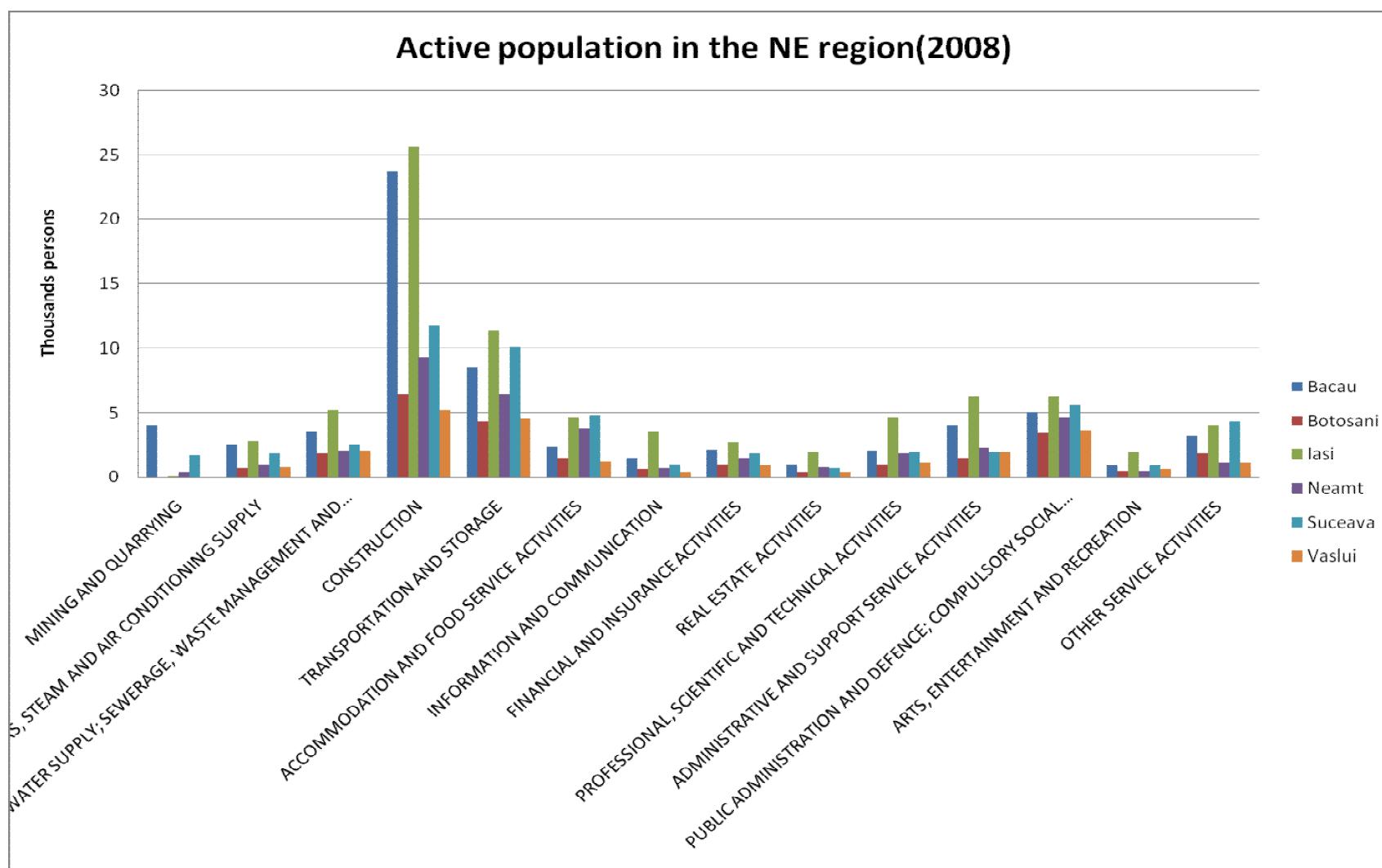


Figure 9. Active population 2008 of the Nord-Est Region (b); Source: Annual Statistic Record of Romania, 2009, National Institute of Statistics

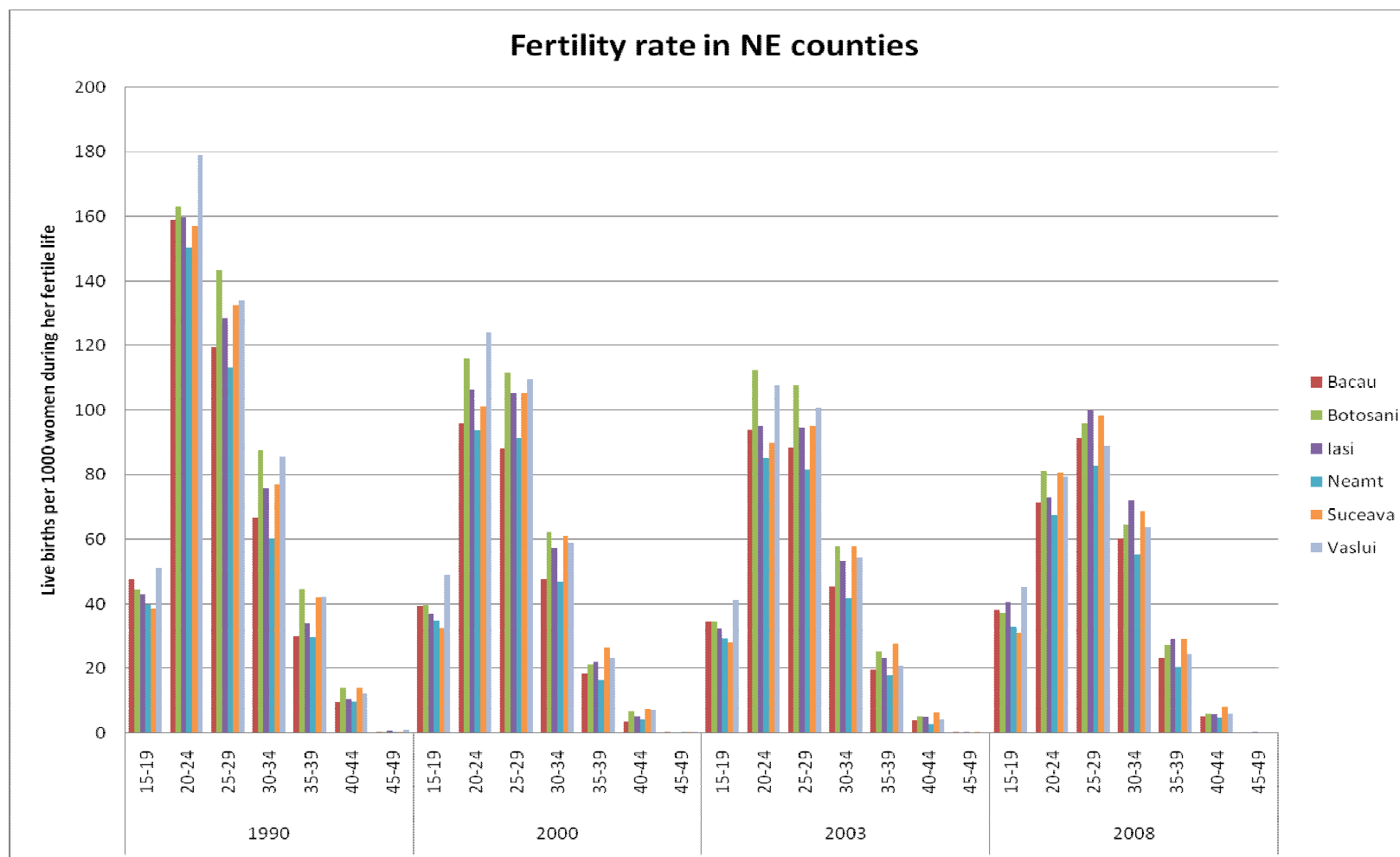
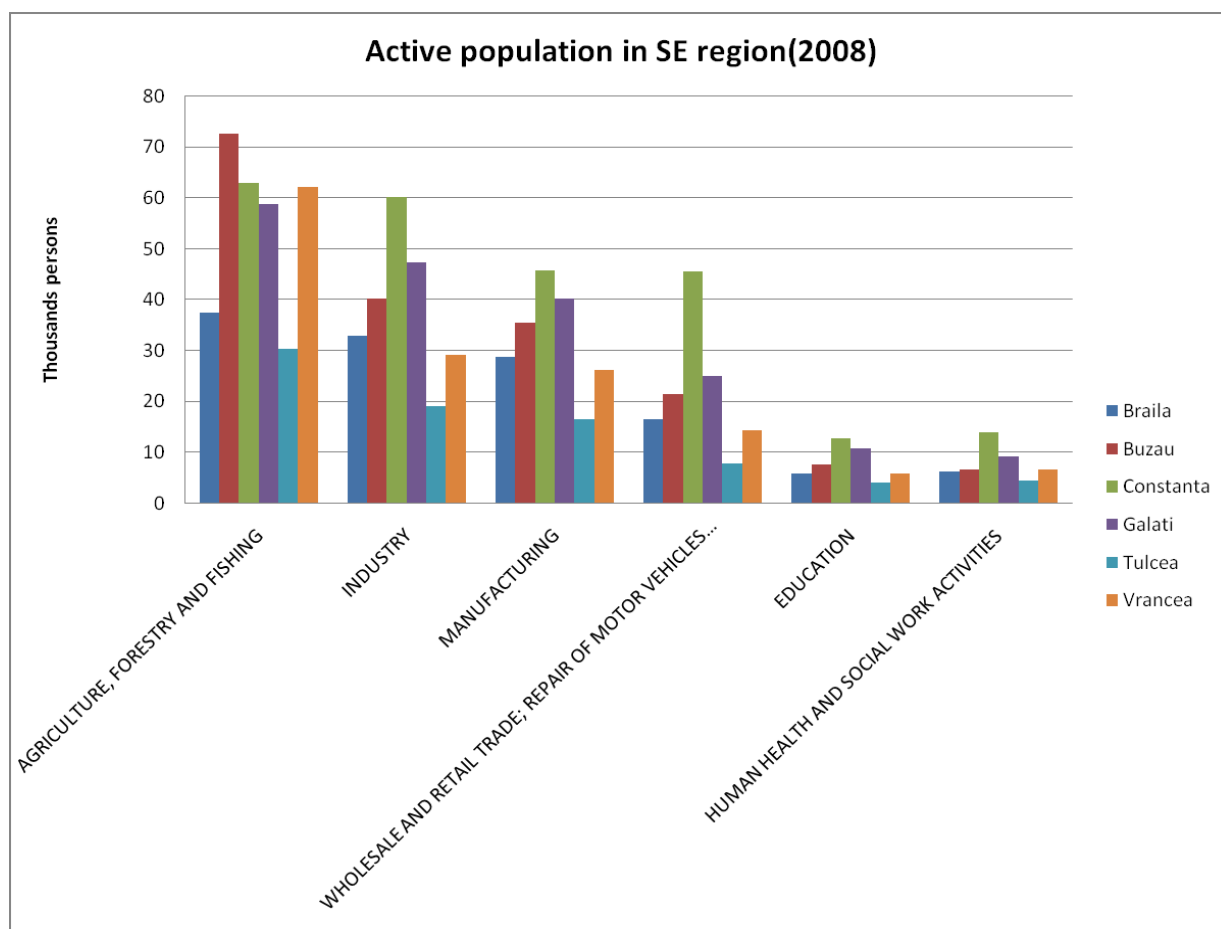


Figure 10. Fertility rate Nord-Est Counties; Source: Annual Statistic Record of Romania, 2009, National Institute of Statistics

5.2. Economic change and population: other aspects of the Sud-Est Region

Among other relevant economic and demographic aspects in the region there is to mention the evolution of the following indicators (on the basis of data delivered by the Annual Statistic Record of Romania 2009).



Source: Annual Statistic Record of Romania, 2009, National Institute of Statistics

Figure 11. Active population 2008 of the Sud-Est Region (a)

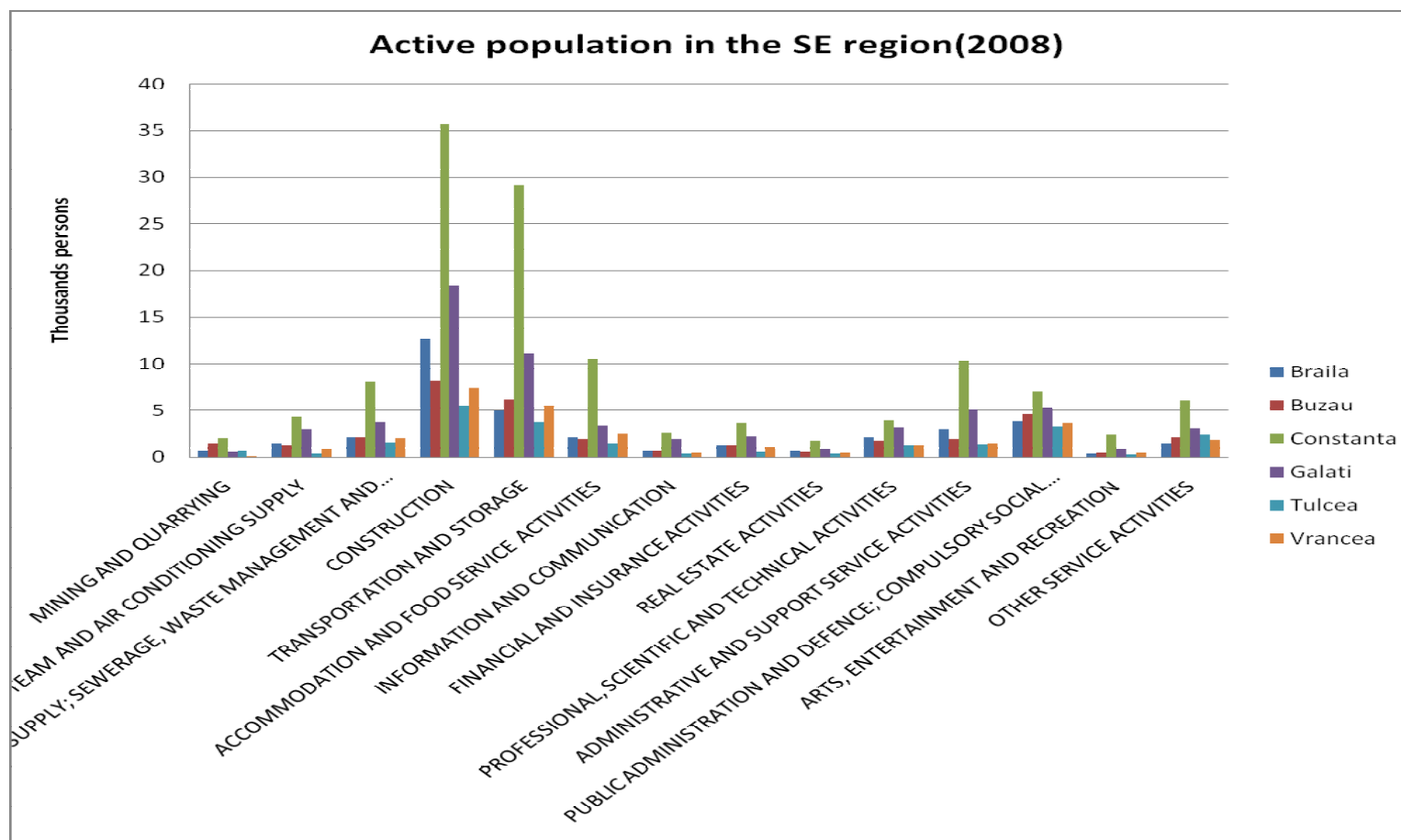


Figure 12. Active population 2008 of S-E (b); Source: Annual Statistic Record of Romania, 2009, National Institute of Statistics

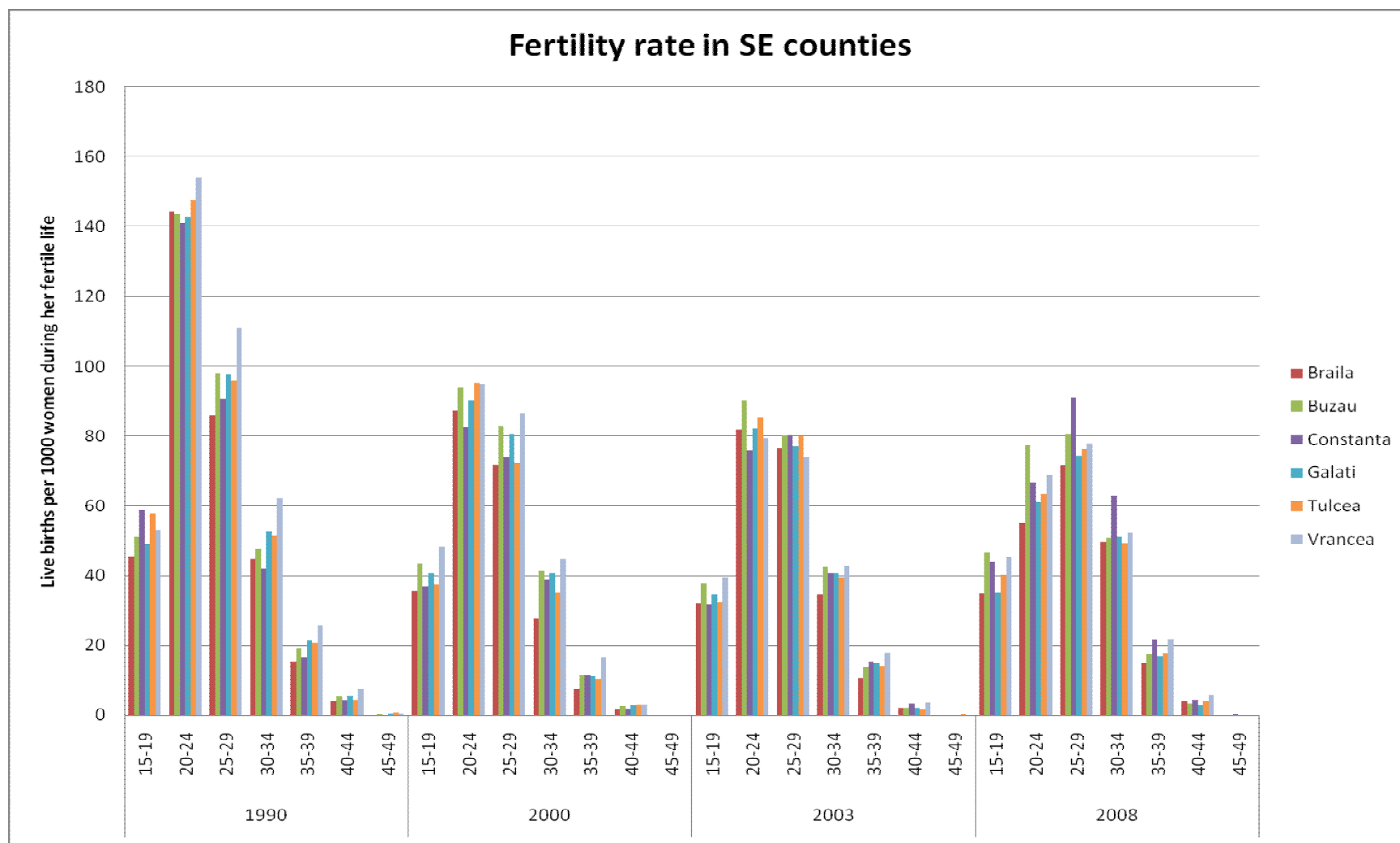


Figure 13. Fertility rate of the Sud-Est counties; Source: Annual Statistic Record of Romania, 2009, National Institute of Statistics

6. Economic and social effects of demographic change in the case study addressed to the Macroregion 2

6.1. Economic and social effects of demographic change in Nord-Est Region

- substitution rate is higher than 1, which indicates for the next period a raised pressure on the work market for the fresh graduates
- the working force is high compared to the national level mainly given the number of population working in agriculture
- the working force in agriculture is high, which indicates an economic structure needing major and sustained interventions for modernization, with a decrease of the work in subsistence agriculture common in the region and an increase in the tertiary sector of services
- the need to take well planned and sustained actions to change the economic structure in the region so that it adapts to a modern, flexible and competitive structure in a globalized competition, along with other measures so that the work force structure reflects such changes
- the workforce per gender and age groups is similar with the national structure, while regionally women are predominant in agriculture and services, and men work mainly in industry and constructions; for the work force on age groups, those aged 15-24 and those aged 55-64 have lowest numbers, and indicate the need for policies promotion the workforce
- the region is affected by the migration of workforce outside Romania; this cannot be analyzed based on the lack of measures and the interest to monitor this process; however, more consistent steps are related to school children left with grandparents or elder brothers, for which the region is to look and find solutions for schooling and specialized assistance

6.2. Economic and social consequences of demographic change in Sud-Est Region

The issues that the South East Region and the entire country are equally facing are related, in particular to the decrease of the total active and occupied population. The decrease of the total number of population had major consequences on the labour force market.

The dismissed labour force in large companies undergoing an economic restructuring process has a reduced capacity of adjusting to other activities, due to the fact that people who are affected by unemployment are, in general, professionally trained only in the inefficient sectors and/ or are of a higher age (over 40). Given that, the adaptation to the requirements of the labour market is more difficult, leading to a long-term increase of the unemployment.

The aging of the population can also lead to the decline of major competences on the labour market, on fields of interest, such as: research, where there's a radical decrease in the number of employees, pre/university education, industry, etc., and, at the same time, the need for initial and/ or continuous training in sectors that are poorly developed at present: caregivers specific for elderly, maintenance and prophylactic activities, socialising activities for the elderly, "part time" activities.

The Roma community represents one of the largest minorities in the Sud-Est Region. In the Sud-Est Region, the highest share of Roma ethnics is represented by children (of ages between 0-14 years old), followed by people of ages between 25-34 years old (16 %), people of ages between 45-64 years old (12 %), people of ages between 35-44 years old (10 %), people of ages > 65 years old (3 %), people of ages between 15-24 years old (2%). Although the dropout rates seem to have decrease in recent years, official statistics include concerning data. Thus the dropout in the school year 2003-2004 in the region had approximately the same rate as the national rate for primary and secondary schools, colleges and vocational schools. For the post-college education and foremen school instead, the dropout rate exceeds the national value by 1.5 %. There are also notably high differences between counties. Thus, for colleges and vocational schools, the highest dropout rate was registered in Vrancea County, with percentages of 4.6%, and 10.1% respectively, which are approximately 80% higher than the regional values in 2008.

The economic activity of the region during the past few years is defined by a beginning of the decline in industrial branches, which lead to the liquidation and/ or restructuring of large companies (with negative consequences on unemployment) and the set up of small and medium enterprises. According to statistical regional data, micro-enterprises, small and medium enterprises hold the major share in the economy of the region during recent years. Most large enterprises work in manufacturing, construction, transports and storage sectors.

The Sud-Est Region is defined by disparities in the knots focusing industrial and tertiary activities (Brăila - Galați; Constanța - Năvodari), complex industrial centres, touristic areas (the Black Sea Coast and the Danube Delta) and wide areas with agricultural fields and vineries (Buzău, Focșani).

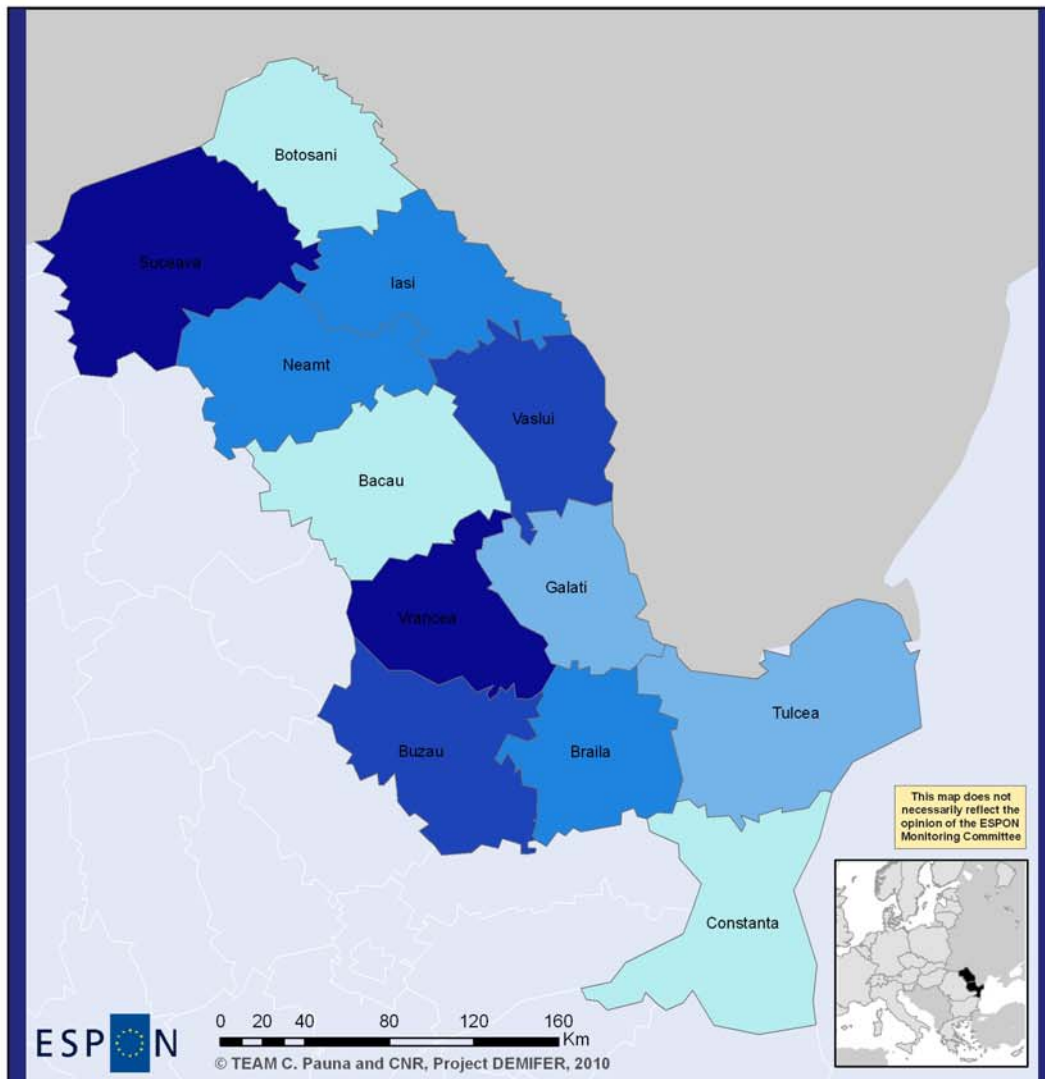
As for specific unemployment segments, the share of women in the total unemployed, as well as the share of young people in the total unemployed at the regional level exceed the rates registered nationally.

Taking into consideration that, as compared to previous years, 2008 recorded a decrease of the personnel in agriculture, industry, constructions, commerce and other services, Constanța and Galați

Counties are still on the top for the number of occupied population, exceeding the regional average. The rate of participation in the labour force, representing the share between the civil active population and the working-age population, was close to the rate registered nationally.

Movements of the labour force in the Sud Est Region follow the global trends, as a natural consequence of the unequal economic evolution. The labour force crisis is effective in the South East Region, in the entire country, as well as in the European Union, and is noticeable both for occupations with a high degree of qualifications and competences, as well as in the ones requiring a low level of training. The demographic decline registered during the past few years seems to contribute to the intensification of this crisis. The solution seems to be the implementation of a focused strategy, to work simultaneously in several sectors: economic, educational and sanitary. The new international context required companies to become competitive, to implement strategies concerned with changes in the culture, organisation and work management system, to offer more attractive wages, to acquire state of art technologies. These are actually the tools to create not only a stable labour market, but a sustainable economic development as well.

Although there are no detailed data on migration during the past years at a regional level, a series of companies, especially in the naval industry, were confronted with the problem of the deficit in the labour force, caused by the emigration of a significant number of employees with average and higher education.



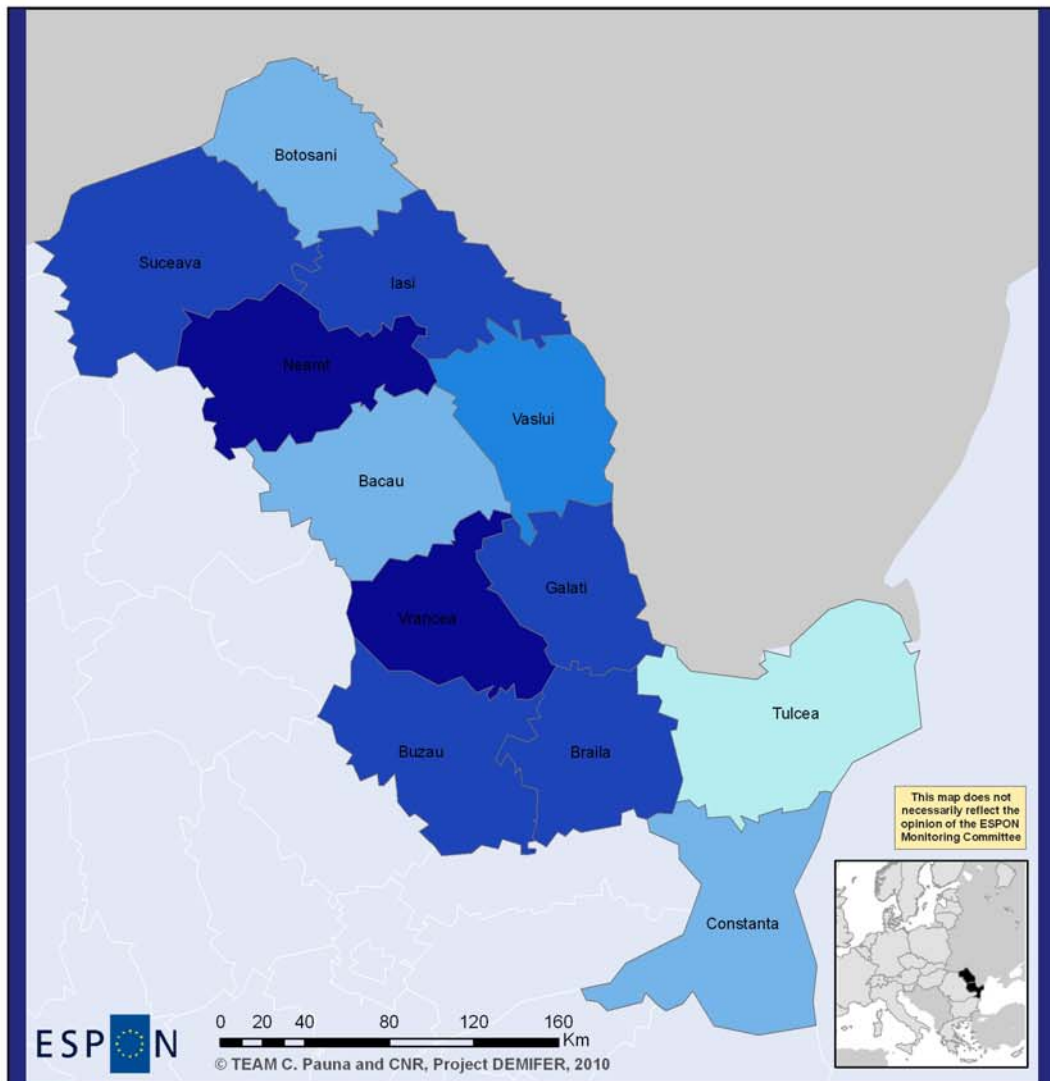
EUROPEAN UNION
Part-financed by the European Regional Development Fund
INVESTING IN YOUR FUTURE

Local level: NUTS 2
Source: Romanian National Statistical Office, 2010
Origin of data: Romanian National Statistical Office, 2010
© EuroGeographics Association for administrative boundaries

Life expectancy at birth - men 2006-2008

- less than 68.5 years
- 68.5 to 69.0 years
- 69.0 to 69.5 years
- 69.5 to 70.0 years
- 70.0 years and more

Map 5. Life expectancy at birth – men, 2006-2008, Macroregion 2



Life expectancy at birth - women 2006-2008

- less than 75.5 years
- 75.5 to 76.0 years
- 76.0 to 76.5 years
- 76.5 to 77.0 years
- 77.0 years and more

Map 6. Life expectancy at birth – women, 2006-2008, Macroregion 2

7. Population ageing at the regional level and the DEMIFER scenarios in the case study addressed to the Macroregion 2

“Which is the direction of Romania’s population² is the title of a prestigious international conference, which took place in Sibiu, 2007. By this occasion, optimistic and pessimistic scenarios regarding the evolution of Romania’s population were presented.

This subject is debated not only in our country, but also abroad. Even the United Nations has developed demographic forecasts for Romania in optimistic and pessimistic versions. According to the medium version, the Romanian population will reach approximately 16 Millions in the year 2050. This figure is also found in the forecasts of Professor Ghetau - a well-known Romanian specialist in demographical problems.

Regarding the elaborated scenarios of the DEMIFER Project, there are to be mentioned several general notices.

The total number of North-East and South-East migrants will decrease continuously until 2050. It is to underline that the number of migrants to other destinations than Europe will be smaller than the one of migrants who feel attracted to Europe.

According to the scenarios of all the 4 Policy Scenarios, the number of population based on age group generally follows a descending trend. Exception is the very old age group over 89 years, as a result of life expectancy increase. The labour force evolution follows the same descending trend. The drop of population for the young age group - in the case of all the 4 Policy Scenarios - will determine in both regions the increase of the “old age dependency ratio” and of the “economic old age dependency”. The value of these indicators is higher in the South-East Region, compared to North-East. One of the causes is the migration of the young population to more developed regions of Romania, or West European countries, especially Italy and Spain.

² The original title is “Populatia Romaniei incotro ?”

DEMIFER Policy Scenarios

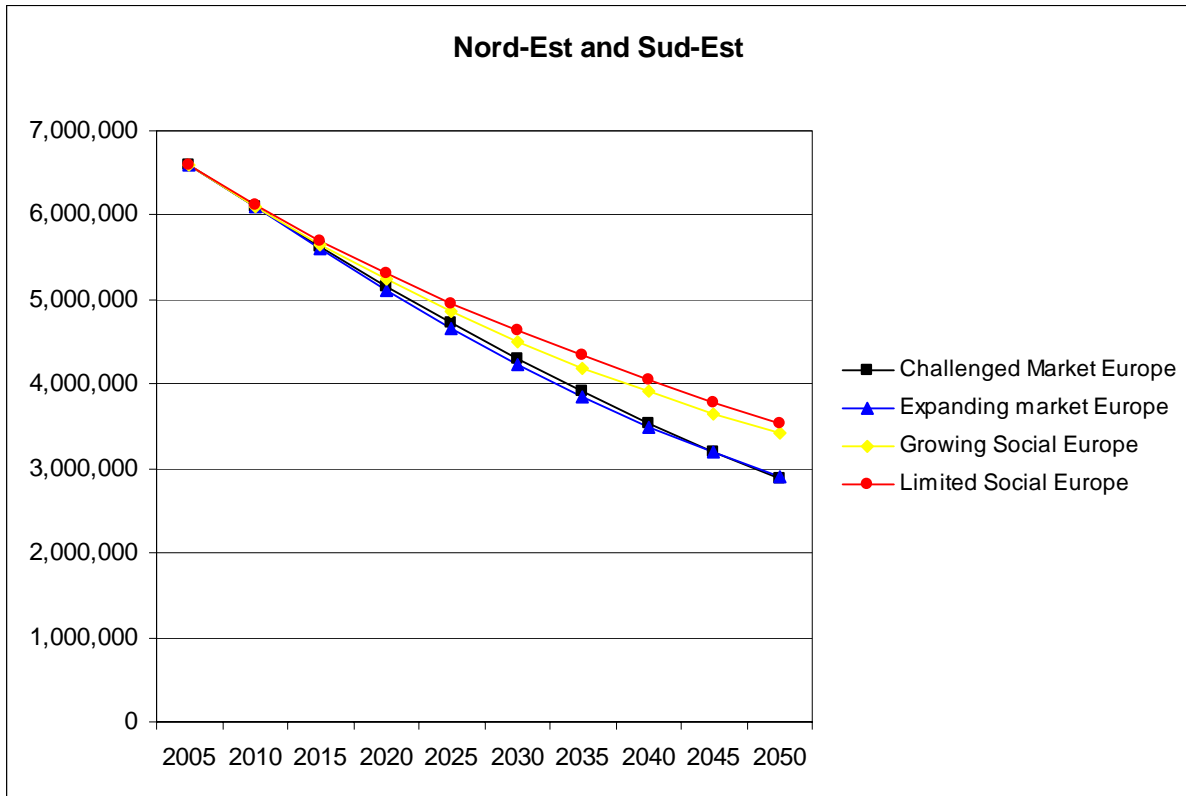


Figure 14. DEMIFER Policy Scenarios for the Macroregion 2

DEMIFER Reference Scenarios

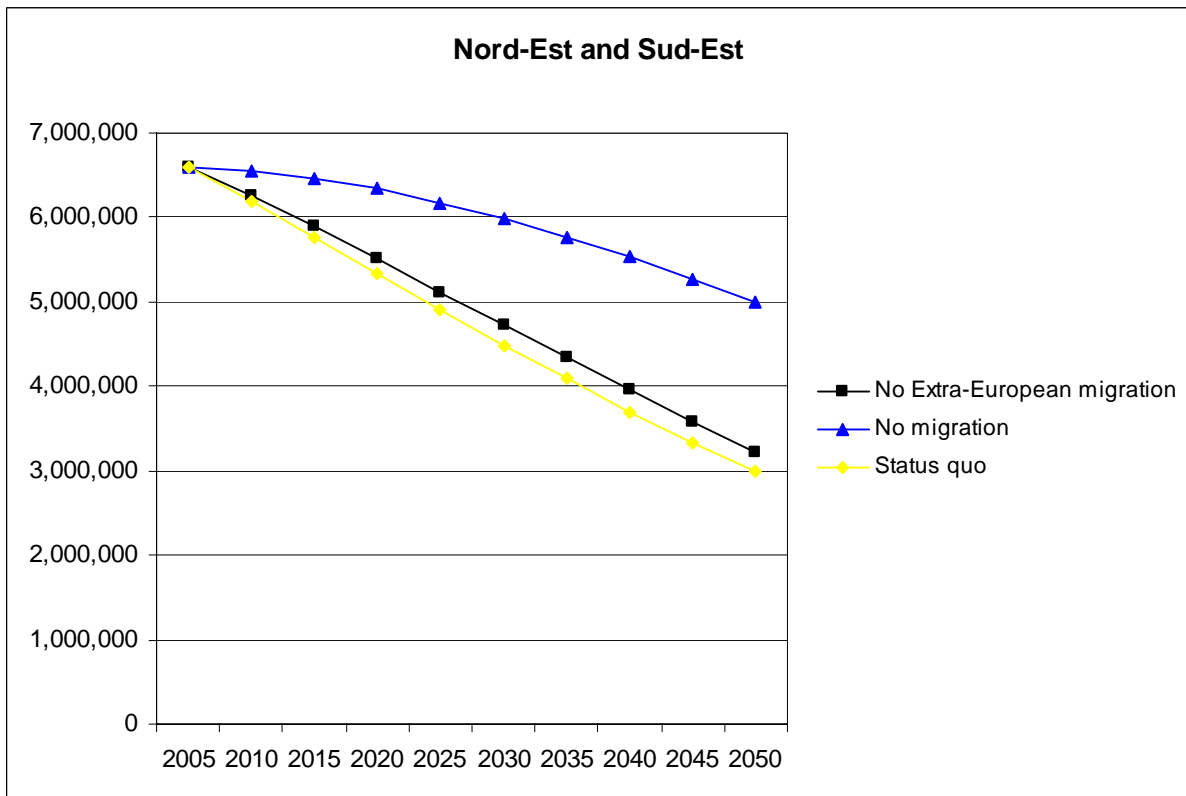


Figure 15. DEMIFER Reference Scenarios for the Macroregion 2

8. Conclusions on the demographic and migration aspects in the case study addressed to the Macroregion 2

8.1. Conclusions on the demographic and migration aspects in the Nord-Est Region

- infant mortality rate, although declining in the last years, is still high in 2008, up to 11.1 deaths (under one year) for 1000 inhabitants
- the constant trend of number of active population and the working population
- a general decline of urban population by 2004 is slightly changed, yet still remains a region with a high proportion of population living in the rural areas: 56.8% out of the population in 2008
- a declining trend of companies registered in industry, trade and services across the region, with a volume of direct foreign investments of only 3% out of the national total volume
- high loses during the primary and secondary education, of 24.55% out of the school population
- for the level of instruction, a preponderance of the population aged 15 and over is remarked as being low, a lot higher than the national average, while the average for secondary and tertiary education is lower than the national average
- there is an overwhelming number of low educated unemployed people across all unemployed
- the region has the highest level of poverty in Romania, 40.7% (according to the National Anti-Poverty and Promotion of Social Inclusion Plan) which asks for special attention.

8.2. Conclusions on the demographic and migration aspects in the Sud-Est Region:

The youth unemployment rate (15-24 years old) recorded in 2007 worrying high rates (26.5%, by 6.4 percentage points higher than the national average and by 11.2 points higher than the EU 27 average). The feminine population and the population in the urban area in this age group register higher unemployment rates than the total of the working-age population.

The share of young unemployed in the total unemployed population increased during 2002 – 2007 and reached in 2007 the highest rate in the analysed period, over 33%.

The higher share of the population with ages between 0-14 years old in rural areas, as compared to the one in urban areas, in all the counties in the region, points to the problem of adapting the schools network for initial professional training and of implementing efficient measures to

assure the access of this school population category to education and professional training, with a view to providing equal opportunities. The initial professional training offer from schools will have to support the capitalization of the specific cultural patrimony and of the natural resources in rural areas.

The envisaged increase of the population aged 65 and over, will lead, in our opinion, to an increased demand in the sector of social and medical assistance, and the education system will have to meet this new reality with a training offer, both through schooling plans and an adapted curricula;

The high share of population aged between 30-64 years old will lead to an increased demand for continuous training. This represents a major opportunity for school units interested in compensating for the diminishing school population.

Ethnic diversity specific to the region requires solutions to provide access to education and professional training and support for the disadvantaged ethnic groups, in particular for the Roma population.

The opening of the labour market in the entire European Union, in the context of the new status of Romania as EU member state, lead to a deficit on the labour market, caused by external migration. The phenomenon is already present in the South East Region in the naval construction and construction industries.

In order to reduce the gaps between regions at European level, as well as in order to strengthen the competitiveness and the occupancy of the labour force, the European Union has created specific financial tools (ERDF, ESF, CF). On Romania's accession to the European Union, we have access to European Grants. Through financing programs, Romania was allotted, by the European Union, structural funds of approximately 19,7 billion Euro for the period 2007-2013.

9. Annex I : Data issues and regional particularities in the case study addressed to the Macroregion 2 composed of Nord-Est and Sud-Est Regions

For both regions were used the official data from the National Statistic Institute.

For data analysis related to migration, there is a good record at the regional level for a long time. But statistics do not show regional level data on education level of migrants, and country of destination or the origin country of migrants.

For the most important used indicators, there must be mentioned the followings:

Emigrants by macroregions, development regions and counties of departure

Definition Emigrants are persons who change their permanent residence from Romania to another country.

Periodicity Annual

Data sources Data base of Ministry of Administration and Interior

Methodology Emigrants - Romanian citizens who left the country, in agreement with the Romanian authorities, in order to settle their domicile abroad.

Last update MAY 29, 2009

Immigrants by macroregions, development regions and counties of destination

Definition Immigrants are persons who change their permanent residence from another country to Romania.

Periodicity Annual

Data sources Data base of Ministry of Administration and Interior

Methodology Immigrants - foreign citizens who came into the country, in agreement with the Romanian authorities, in order to settle their domicile in Romania.

Last update MAY 29, 2009

Fertility rate by urban and rural areas, mother's age group, macroregions, development regions and counties

Definition Total fertility rate represents the average number of children to be born by a woman during her fertile lifetime (aged 15-49 years), according to fertility rates of a given year

Total fertility rate is calculated both for the whole fertile contingency and for five-year groups.

Periodicity Annual

Data sources Turning into account the results of statistical surveys carried out within the system of official statistics

Methodology General fertility rate is computed from the live-births numbers per 1000 women aged 15 to 45 years old.

The total fertility rate represents the average number of children that would be born to a woman during her fertile lifetime, conforming to fertility rates of a given year.

Is computed based on the average feminine population (at mid-year), registered by the mother's domicile.

Last update JUL 16, 2009

Civil economically active population by activity of national economy at level of CANE Rev.2 section, gender, macroregions, development regions and counties:

Definition The civil employed population includes all the persons who work for an income and whose work is usually done in one of the activities of the national economy, being defined as an economic or social activity, based on a work contract or a free-lance activity (self-employed) in order to get income such as salary , in kind payment, etc. The following are the categories of persons included:

- employees who work in one of the activities of the national economy in the public (integrally of state and public of national interest), mixed, private, cooperative and collective;
- employers - managers of private units - that employ labour force for the activity of their units;
- self-employed;
- unpaid family workers.

The civil employed population does not include armed forces and similar (the personnel of the Ministry of Defence, Ministry of Administration and Interior, Romanian Intelligence Office, conscripts), convicts and political and community organisations employees.

Periodicity Annual

Data sources Labour force balance

Methodology $POC_{vl} = S + P + L_{cp} + L_{fn}$ where: POC_{vl} = civil employed population:

S = employees: persons who work based on a work contract in an economic or social unit - regardless of the form of property - in exchange for a money or in kind payment;

P = employers: persons who work in their own units and for whose activity have one or more employees;

L_{cp} = own-account workers: persons who work either in their own units endowed with own equipments, or based on their professional training, without hiring employees but being or not helped by the unpaid members of the family;

L_{fn} = unpaid family workers: persons who work in an economic family unit, run by a member of the family or by a relative, who do not get a money or in kind payment for their activity.

Last update NOV 12, 2009

10. Annex II: Data used in the case study addressed to the Macroregion composed of Nord-Est and Sud-Est Regions

10.1. Annex II: Data used in the analysis of the Nord-Est Region and its subdivisions

Table 3

The structure of population in Nord-Est Region

	Total	0-14 years old		15-59 years old		60 years and over	
	Thousands	Thousands		Thousands		Thousands	
ROMANIA							
2000	22435205	4098080	18.3	14117075	62.9	4220050	18.8
2008	21504442	3265476	15.2	14034289	65.3	4204677	19.6
NORD-EST							
2000	3823492	803457	21.0	2327517	60.9	692518	18.1
2008	3719102	662602	17.8	2369650	63.7	686850	18.5

Source: Annual Statistic Record of Romania, 2009, National Institute of Statistics

Table 4

Internal migration caused by change of residence in Nord-Est Region (2007-2008)

No.	County	Leaving	Arriving	Balance	Leaving	Arriving	Balance
		2007			2008		
TOTAL		65228	58609	-6619	64804	58515	-6289
1.	Bacau	12611	11845	-766	13215	12358	-857
2.	Botosani	8053	6229	-1824	7787	6017	-1770
3.	Iasi	14391	14270	-121	14365	14394	29
4.	Neamt	11017	10205	-812	10409	9654	-755
5.	Suceava	9812	9103	-709	10153	9535	-618
6.	Vaslui	9344	6957	-2387	8875	6557	-2318

Source: Annual Statistic Record of Romania 2009

Table 5**Internal migration according to urban/rural areas in N-E Counties 2007-2008**

No.	County	Urban			Rural		
		Leaving	Arriving	Balance	Leaving	Arriving	Balance
2007							
TOTAL		31142	19947	-11195	34086	38662	4576
1.	Bacau	6702	4014	-2688	5909	7831	1922
2.	Botosani	3569	2087	-1482	4484	4142	-342
3.	Iasi	7114	5181	-1933	7277	9089	1812
4.	Neamt	5173	3113	-2060	5844	7092	1248
5.	Suceava	4829	3581	-1248	4983	5522	539
6.	Vaslui	3755	1971	-1784	5589	4986	-603
2008							
TOTAL		31061	19960	-11101	33743	38555	4812
1.	Bacau	6654	3965	-2689	6561	8393	1832
2.	Botosani	3493	1912	-1581	4294	4105	-189
3.	Iasi	7282	5577	-1705	7083	8817	1734
4.	Neamt	4920	2941	-1979	5489	6713	1224
5.	Suceava	5049	3678	-1371	5104	5857	753
6.	Vaslui	3663	1887	-1776	5212	4670	-542

Source: Annual Statistic Record of Romania 2009

Table 6**International migration according to sex in N-E counties 2007-2008**

Nr. crt.	County	IMMIGRANTS			EMIGRANTS			INTERNATIONAL		
		Total	Masculin	Feminin	Total	Masculin	Feminin	Total	Masculin	Feminin
2007										
TOTAL		1003	552	451	1522	526	996	-519	26	-545
1.	Bacău	106	60	46	333	99	234	-227	-39	-188
2.	Botoșani	74	43	31	91	29	62	-17	14	-31
3.	Iași	243	147	96	341	135	206	-98	12	-110
4.	Neamț	224	116	108	422	147	275	-198	-31	-167
5.	Suceava	271	145	126	235	87	148	36	58	-22
6.	Vaslui	85	41	44	100	29	71	-15	12	-27
2008										
TOTAL		1229	692	537	1412	488	924	-183	204	-387
1.	Bacău	155	91	64	320	106	214	-165	-15	-150
2.	Botoșani	73	40	33	125	39	86	-52	1	-53
3.	Iași	334	183	151	328	109	219	6	74	-68
4.	Neamț	209	96	113	319	112	207	-110	-16	-94
5.	Suceava	375	240	135	226	92	134	149	148	1
6.	Vaslui	83	42	41	94	30	64	-11	12	-23

All other files (Excel tables) attached for NE Region

10.2. Annex II: Data used in the report of the Sud-Est Region and its subdivisions

Table 7**The structure of population in Sud-Est Region**

	Total	0-14 years old		15-59 years old		60years old and over	
		thousand people	thousand people	-%-	thousand people	-%-	thousand people
ROMANIA							
2000	22435205	4098080	18,3	14117075	62,9	4220050	18,8
2008	21504442	3265476	15,2	14034289	65,3	4204677	19,6
SUD-EST							
2000	2934319	542253	18,5	1859490	63,4	532576	18,1
2008	2819565	423404	15,0	1855210	65,8	540951	19,2

Source: Annual Statistic Record of Romania 2008, 2009

Table 8

**Internal migration caused by the change of residence in the Sud-Est Region
(2007-2008)**

No.	County	Leaving	Coming	Balance	Leaving	Coming	Balance
		2007			2008		
TOTAL		49533	48119	-1414	49590	47681	-1909
1.	Braila	5408	4575	-833	5200	4342	-858
2.	Buzau	8943	8591	-352	8752	8335	-417
3.	Constanta	13005	14679	1674	13908	15260	1352
4.	Galati	10013	8796	-1217	9474	8173	-1301
5.	Tulcea	4891	4122	-769	5052	4352	-700
6.	Vrancea	7273	7356	83	7204	7219	15

Source: Annual Statistic Record of Romania 2008, 2009

Table 9

**Internal migration according to urban/rural areas in S-E
Counties 2007-2008**

No.	County	Urban			Rural		
		Leaving	Coming	Balance	Leaving	Coming	Balance
2007							
TOTAL		26971	20713	-6258	22562	27406	4844
1.	Braila	3101	2065	-1036	2307	2510	203
2.	Buzau	4223	2478	-1745	4720	6113	1393
3.	Constanta	9189	8408	-781	3816	6271	2455
4.	Galati	5059	3830	-1229	4954	4966	12
5.	Tulcea	2211	1548	-663	2680	2574	-106
6.	Vrancea	3188	2384	-804	4085	4972	887
2008							
TOTAL		27577	19964	-7613	22013	27717	5704
1.	Braila	2969	2006	-963	2231	2336	105
2.	Buzau	4203	2416	-1787	4549	5919	1370
3.	Constanta	9825	8392	-1433	4083	6868	2785
4.	Galati	5023	3403	-1620	4451	4770	319
5.	Tulcea	2368	1473	-895	2684	2879	195
6.	Vrancea	3189	2274	-915	4015	4945	930

Source: Annual Statistic Record of Romania 2008, 2009

Table 10**International migration according to sex in S-E counties 2007-2008**

No.	County	IMMIGRANTS			EMIGRANTS			INTERNATIONAL MIGRATION BALANCE		
		Total	Men	Women	Total	Men	Women	Total	Men	Women
2007										
TOTAL		681	383	298	863	296	567	-182	87	-269
1.	Braila	33	24	9	93	31	62	-60	-7	-53
2.	Buzau	47	28	19	97	35	62	-50	-7	-43
3.	Constanta	276	169	107	217	79	138	59	90	-31
4.	Galati	153	81	72	230	85	145	-77	-4	-73
5.	Tulcea	46	25	21	54	17	37	-8	8	-16
6.	Vrancea	126	56	70	172	49	123	-46	7	-53
2008										
TOTAL		873	511	362	881	299	582	-8	212	-220
1.	Braila	53	31	22	94	32	62	-41	-1	-40
2.	Buzau	51	33	18	83	34	49	-32	-1	-31
3.	Constanta	342	207	135	248	82	166	94	125	-31
4.	Galati	179	104	75	269	93	176	-90	11	-101
5.	Tulcea	58	34	24	63	20	43	-5	14	-19
6.	Vrancea	190	102	88	124	38	86	66	64	2

Source: Annual Statistic Record of Romania 2008, 2009

All other files (Excel tables) attached for SE Region

Selected References

Baldwin-Edwards, M. (2006), „Patterns of Migration in the Balkans”, *MMO Working Paper No.9*, January 2006, Mediterranean Migration Observatory

Baldwin-Edwards, M. (2005), „Migration Policies for Romania within the European Union: Navigating between Scylla and Charybdis”, *MMO Working Paper No.7*, December 2005, Mediterranean Migration Observatory

Constantin D.L., Nicolescu L., Goschin Z., (2008), “Perspective europene de abordare a azilului si migratiei”, Institutul European din România, Studii de strategie si politici 2008

Constantin D.L, Vasile, V., Preda, D., Nicolescu L., (2008), „Current issues regarding Romania’s external migration”, in J. Poot, B. Waldorf, L. van Wissen, L. (Eds.), *Migration and Human Capital: Regional and Global Perspectives*, Edward Elgar, Cheltenham, UK

Constantin, D.L., Nicolescu, L. (2005), „Romania’s external migration from the perspective of accession to the EU : Institutional and behavioural challenges”, the CD-ROM Collection of *Papers of the 45th Congress of the*

European Regional Science Association, Amsterdam, August 2005, www.ersa.org

Constantin D.L., Vasile, V., Preda, D., Nicolescu L., (2004), *Fenomenul migraționist din perspective aderării României la Uniunea Europeană* (ediție bilingvă – română și engleză), Institutul European din România, Studiile de Impact PAIS II

Ghetau V.,(2008), The known and unknown face of romanian international migration, International Conference "*Effects of Migration on Population Structures in Europe*", Vienna/Austria, 1-2 December 2008, Organizer: Vienna Institute of Demography / IIASA

Lăzăroiu, S., Alexandru, M. (2008), „Romania in E.Hönekopp, H. Mattila (Eds.), *Permanent or Circular Migration? Policy Choices to Address Demographic Decline and Labour Shortages in Europe*, IOM

Sandu D, Radu Cosmin, Constantinescu M, A country report on romanian migration abroad: stocks and flows after 1989, Multicultural Center Prague, 2004

Sandu D, (2006), *Locuirea temporară în străinătate. Migrația economică a românilor 1990-2006*, Bucuresti, FSD

Sandu D., (2010), *Lumile sociale ale migrației romanesti in strainatate*, Iasi, Polirom

Confederatia Caritas Romania, Confederatia Italiana, Centrul de Studii si Cercetari IDOS, *Romanii din Italia – intre respingere si acceptare*, Sinnos Roma, 2010

OECD (2009) *International Migration Outlook, SOPEMI Country Notes Romania*, OECD, Paris

Regional Development Plan 2007-2013, Regional Development Agency for North East Region

Regional Development Plan 2007-2013, Regional Development Agency for South East Region

Regional Operational Programme, 2007-2013

Romanian Statistical Year Book, 1991 – 2009, Institutul National de Statistica

Statistica Tempo – On line, Institutul National de Statistica

Statistica Caritas – Migrantes, 2008

Statistica Caritas – Migrantes, 2009

www.e-migration.ro

<http://infoeuropa.ro>