



EUROPEAN UNION

Co-financed by the European Regional Development Fund

Inspire Policy Making with Territorial Evidence

# Kronoberg Challenges and Strategies

**Christel Gustafsson**  
**Director of Regional Development**

# **Welcome to Kronoberg**

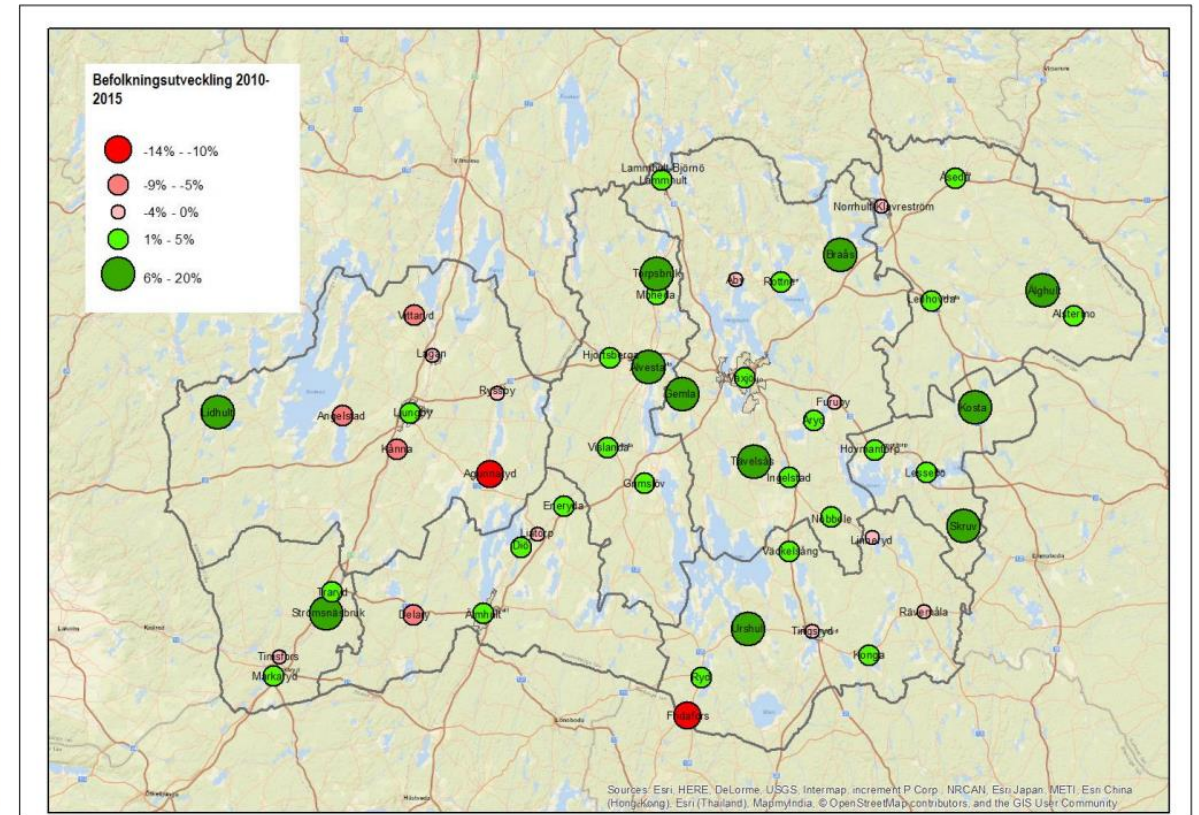
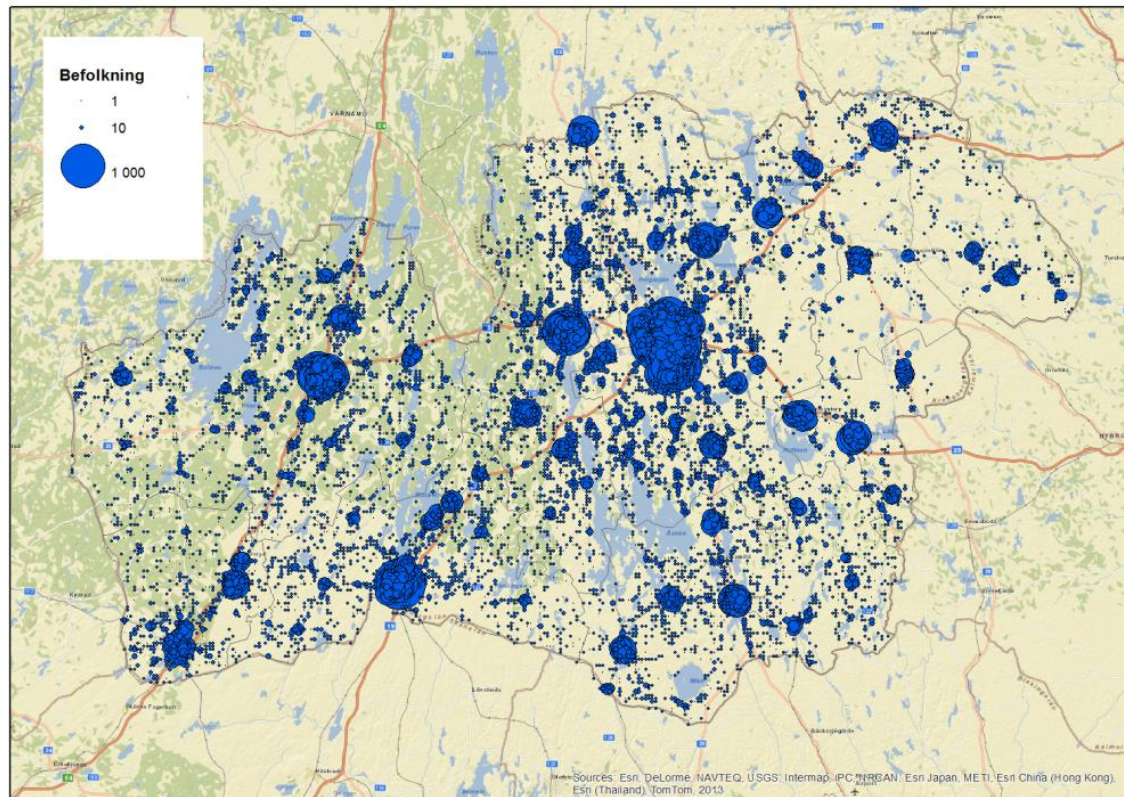
## **The County of Entrepreneurs and Legends**

### **in the green Province of Småland**



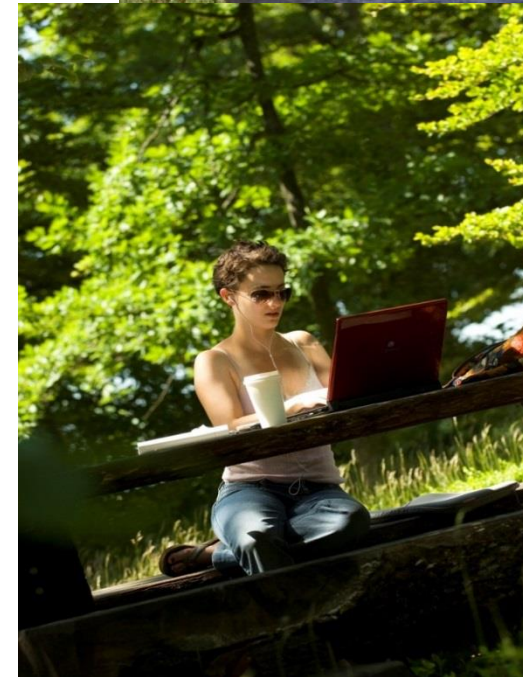
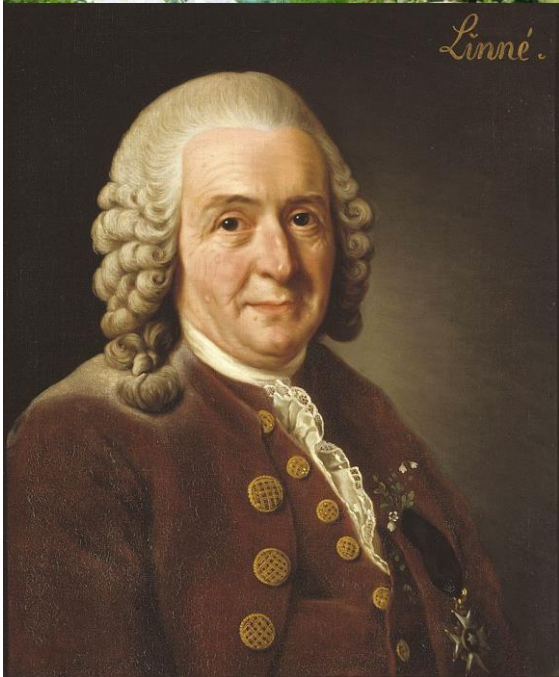


# The Rural Kronoberg





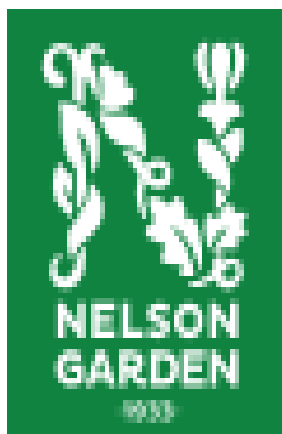
# The past... the present... and the future...





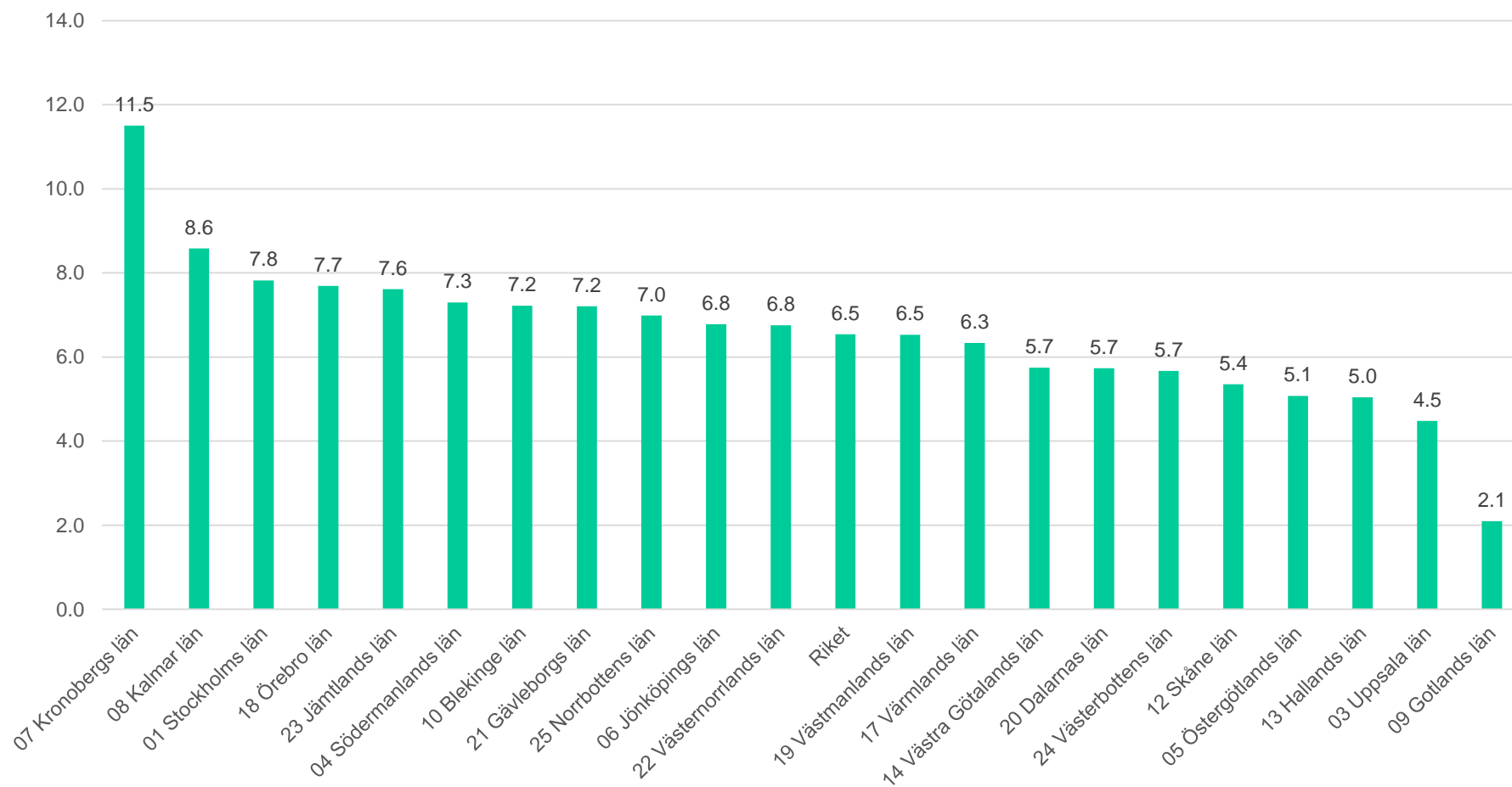
# The past... the Present... and the future...



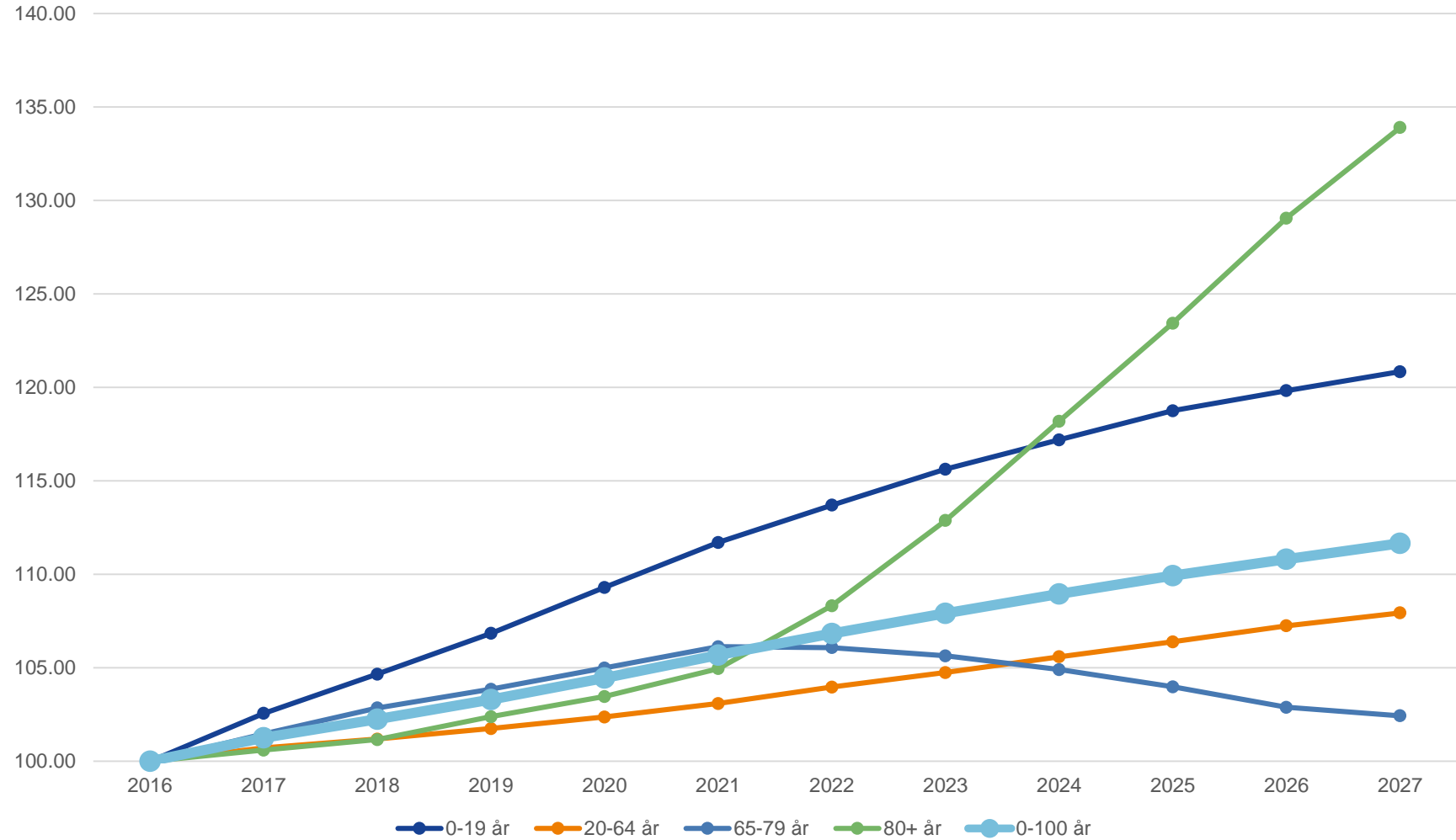


# Net migration 2011-2015

Migranter/1000 invånare årligen i genomsnitt 2011-2015

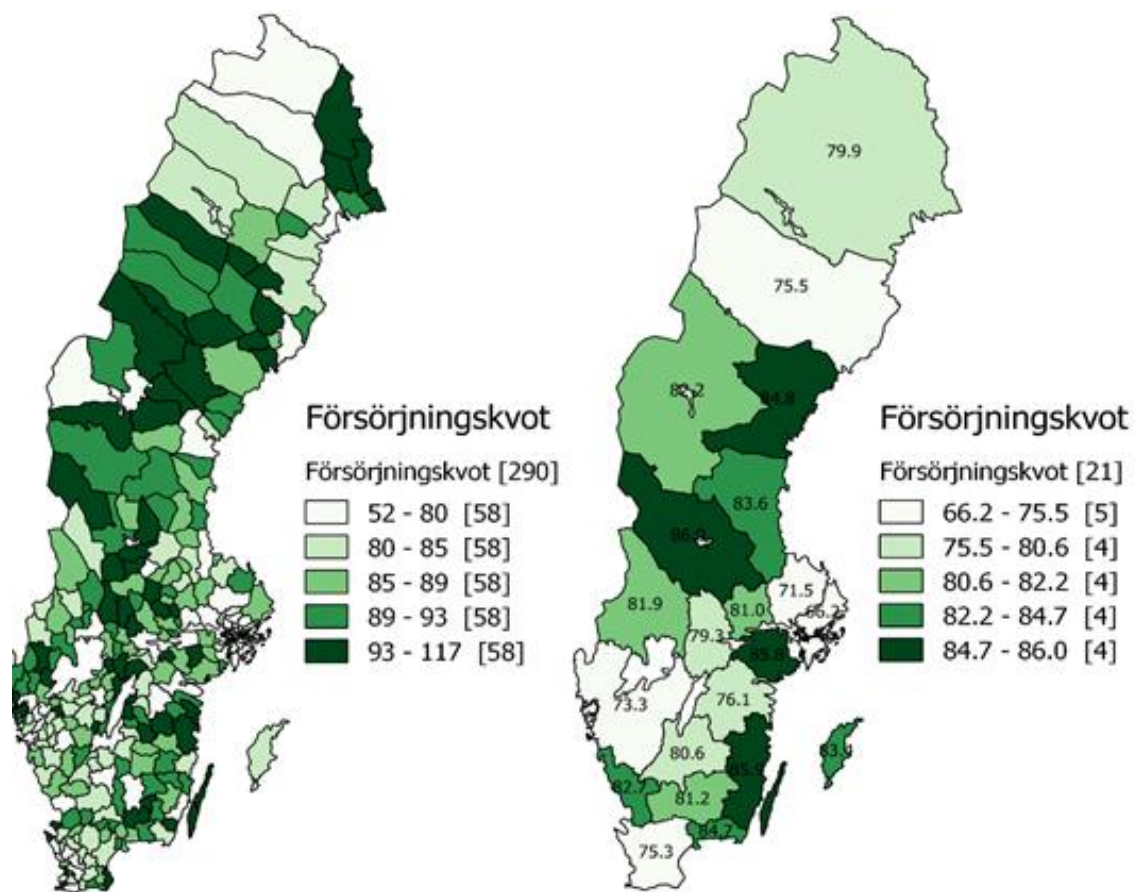


# Expected demography in Kronobergs län

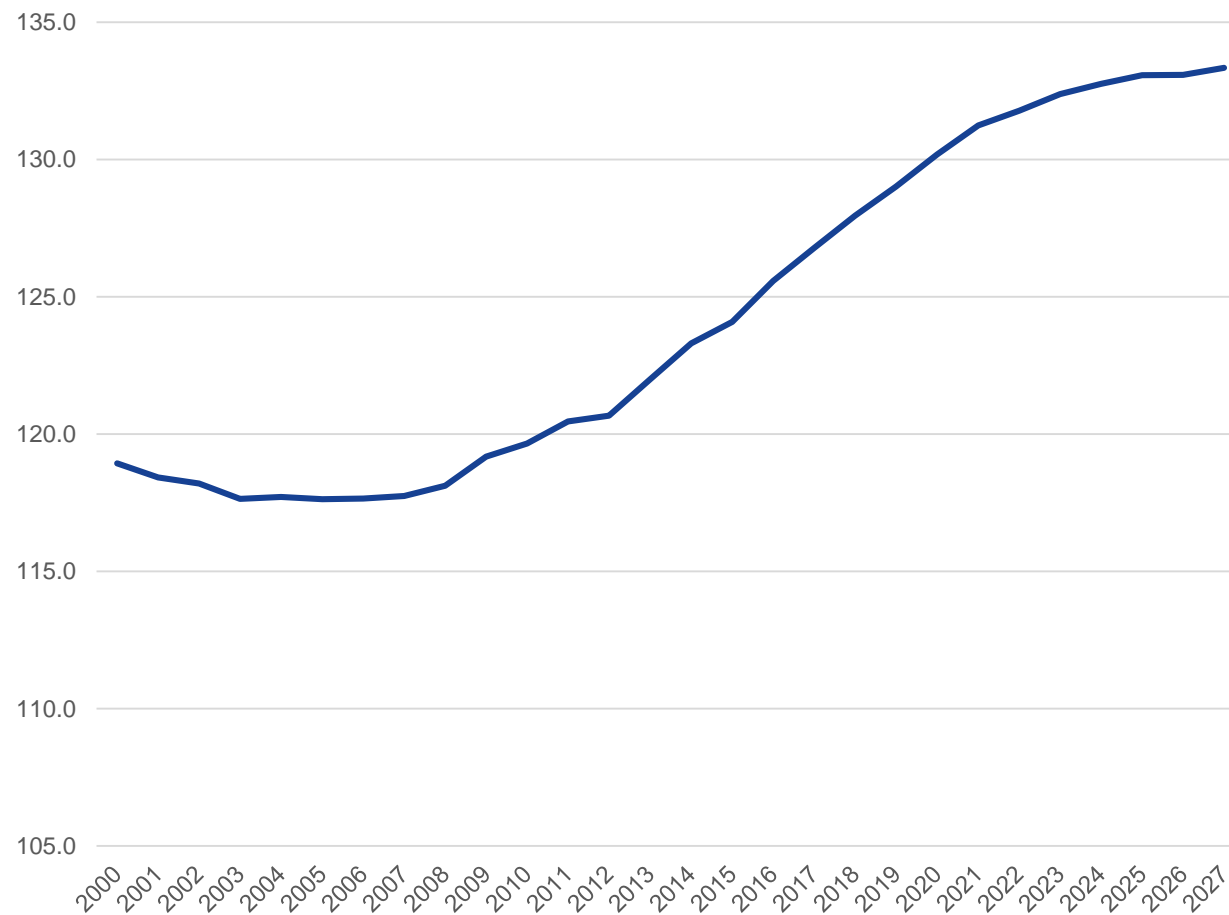




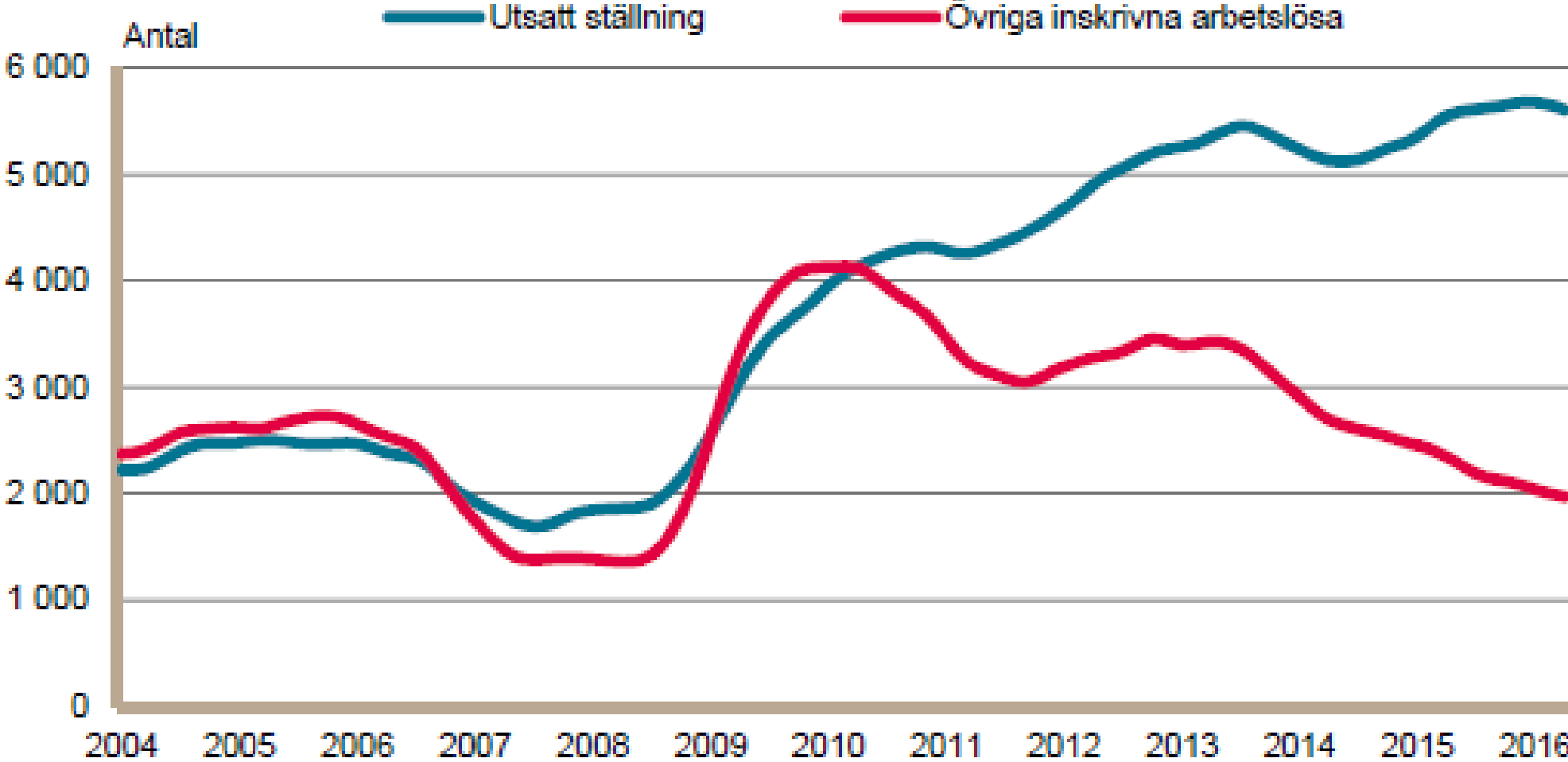
# Rising Supply Quota



Effektiv försörjningskvot vid 80 % sysselsättningsgrad

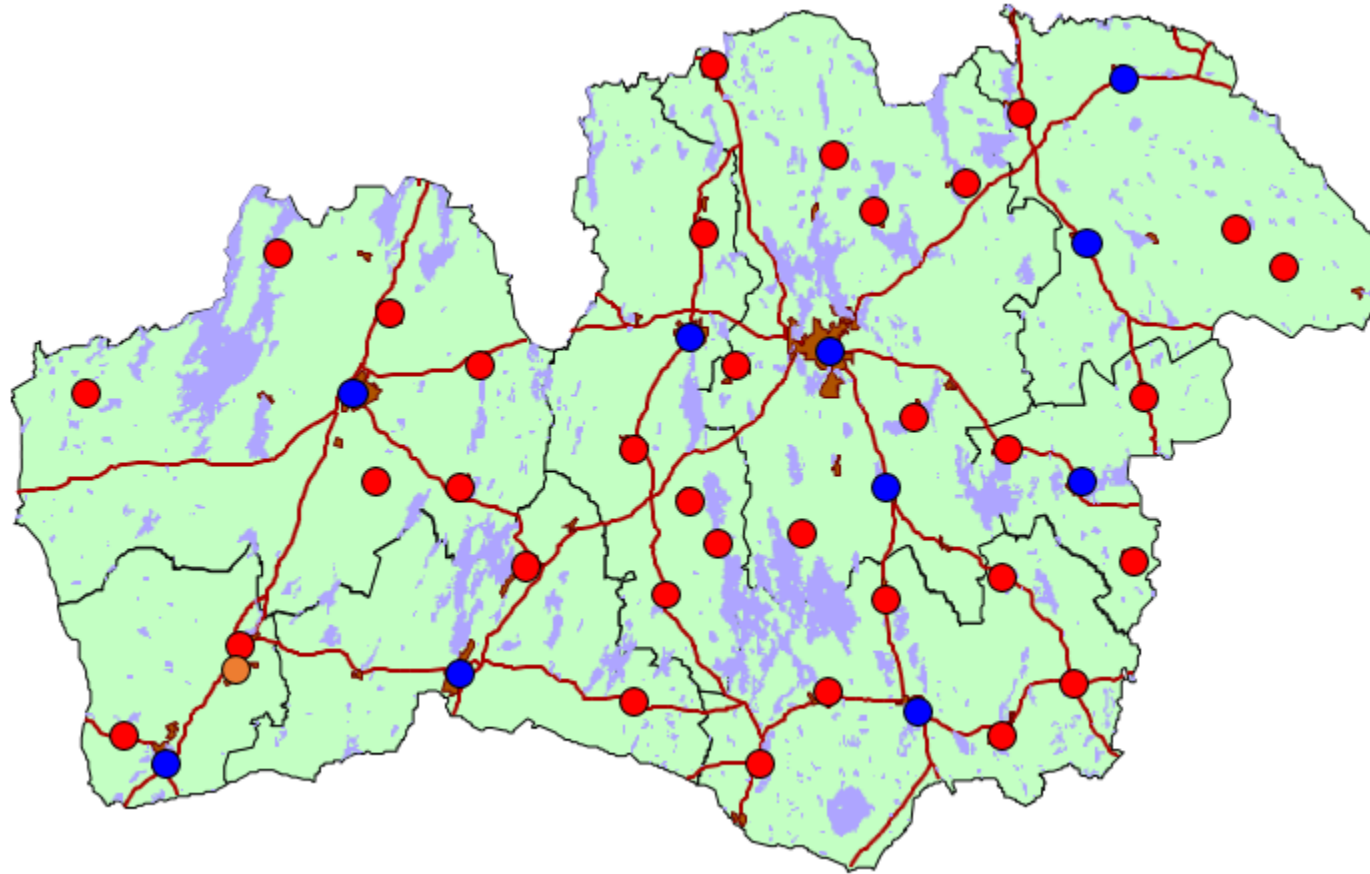


# Inskrivna arbetslösa 16-64 år med utsatt ställning på arbetsmarknaden och övriga inskrivna arbetslösa, Kronobergs län, januari 2004-april 2016



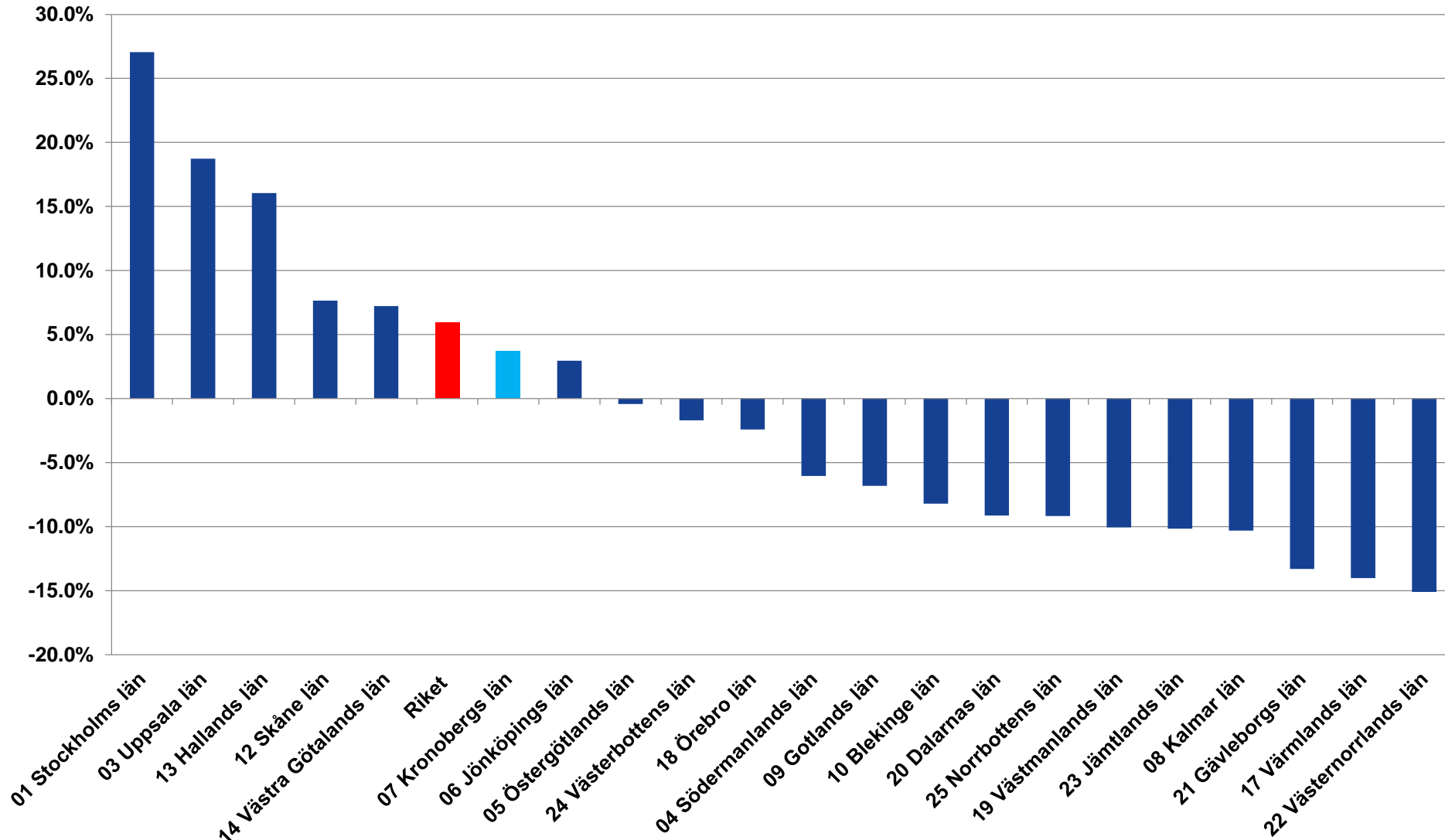
Säsongrensade data, trendvärden  
Källa: Arbetsförmedlingen

# Grocery stores 2015

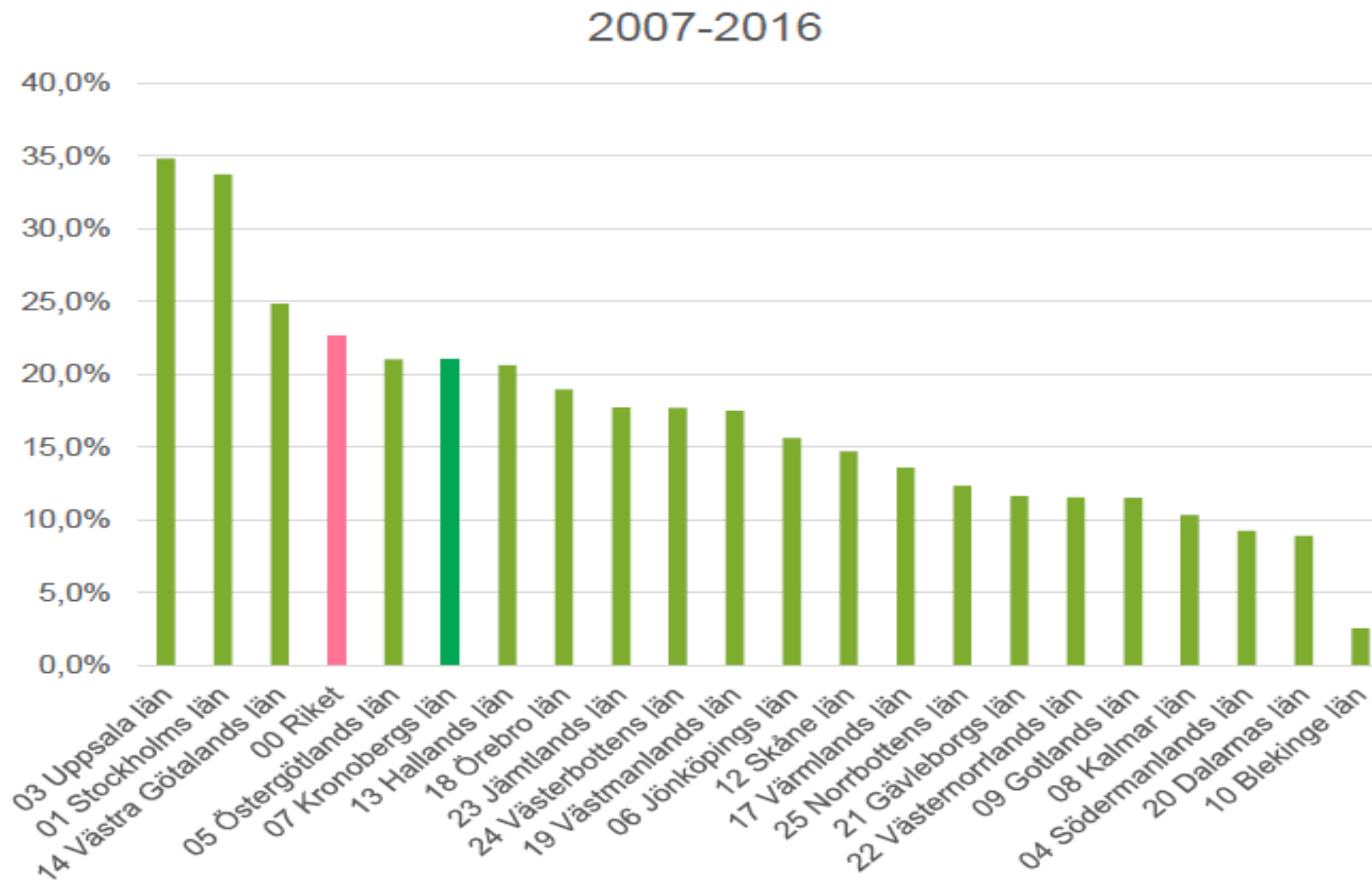




# Job Growth 1990-2015

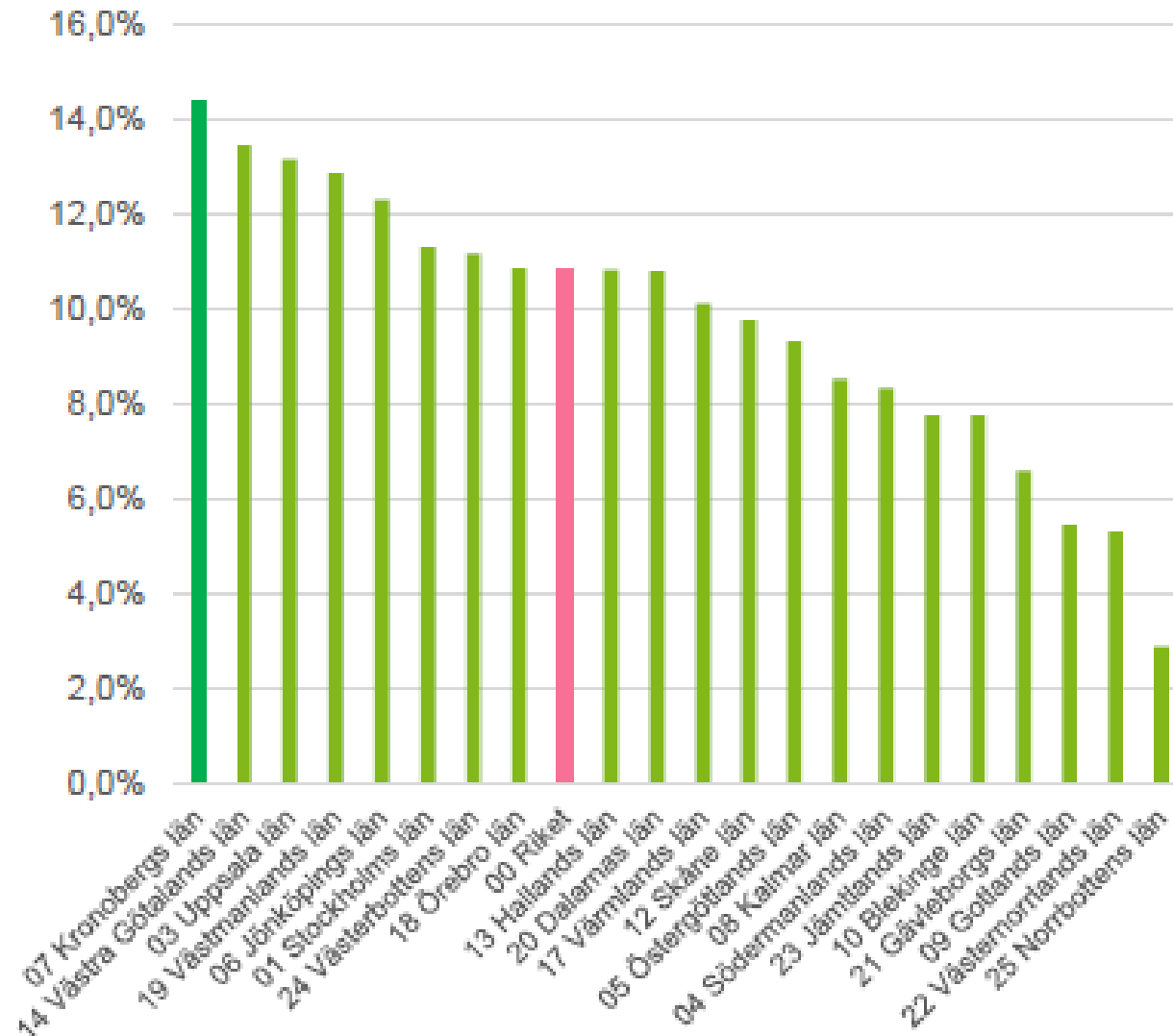


# Economic growth (BRP) 2007-2016



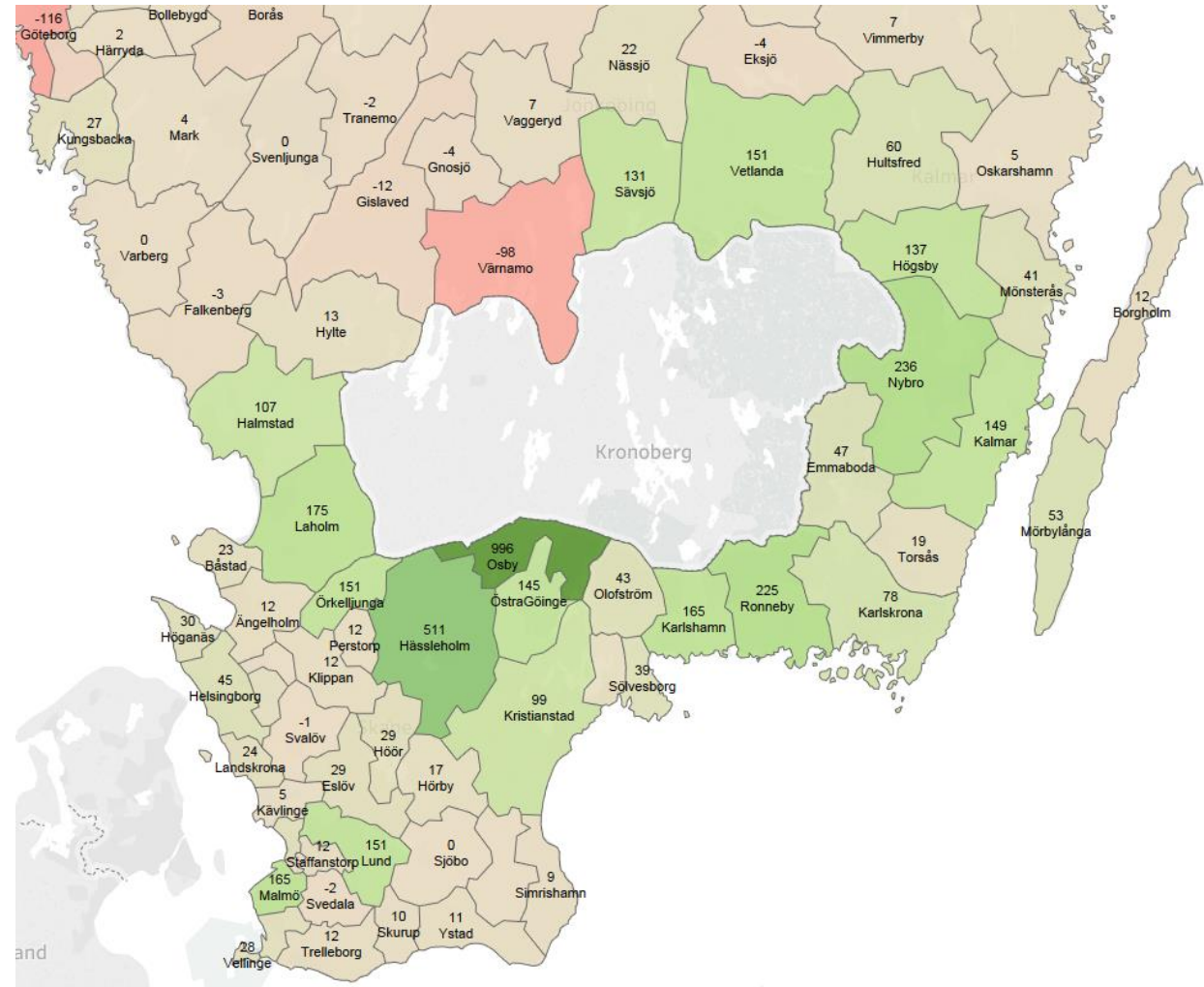
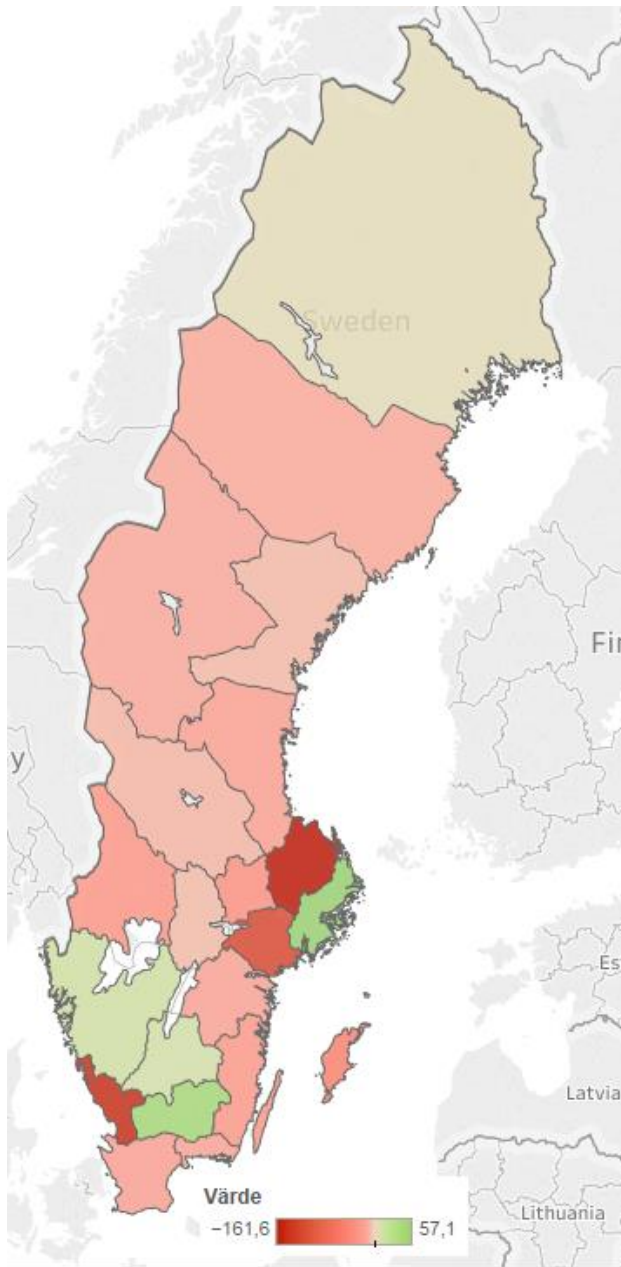
# Economic Growth (BRP) 2014-2016

2014-2016





# Commuting to Kronoberg



# Education Research



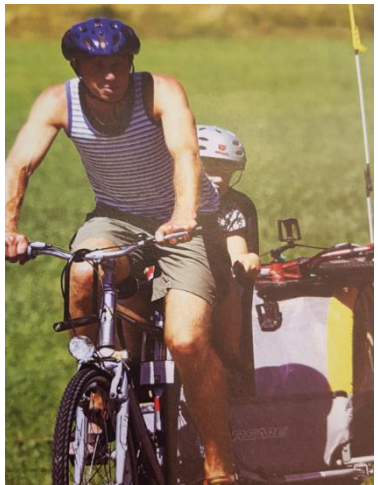
Seminarieriserie i höst i samarbete med Linnéuniversitetet

Det funkar - IT Works!



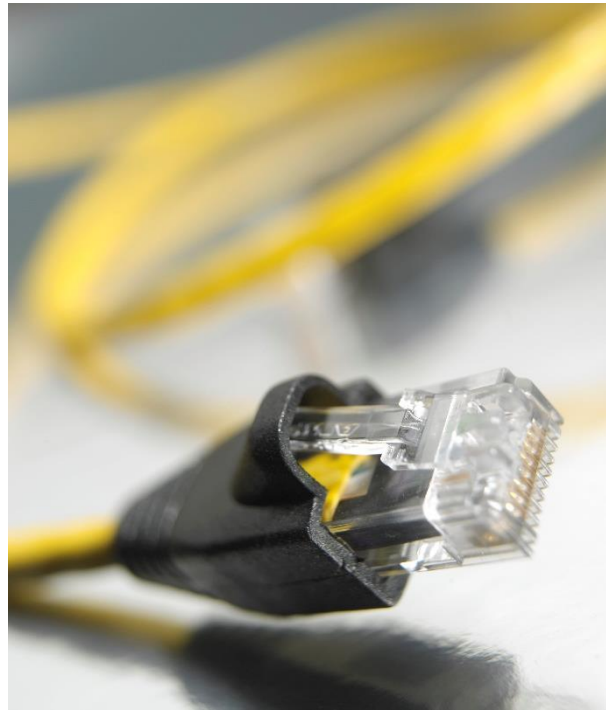
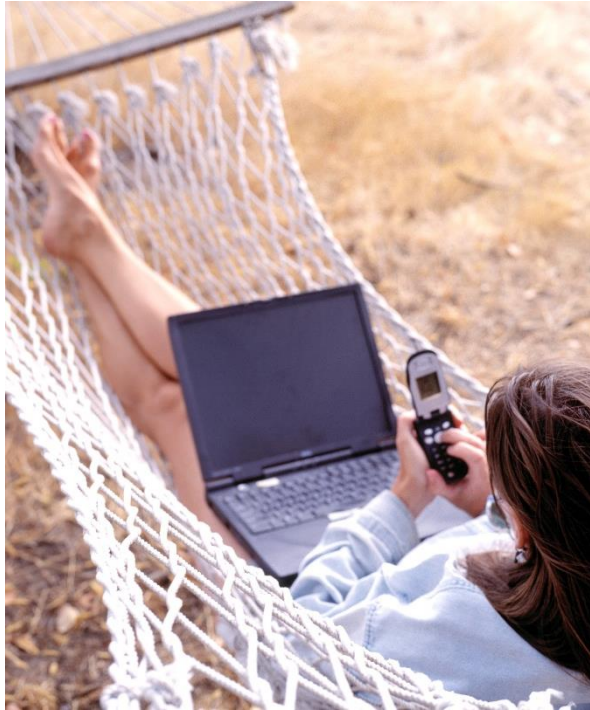


# Attractiveness Digitalisation Communication





# Competence, Renewal Higher Value, Circular Economy



# Ett gott liv i ett livskraftigt län



# // Thank you

Christel Gustafsson, Director of regional development Kronoberg.

This presentation will be made available at: [www.espon.eu/vaxjo](http://www.espon.eu/vaxjo)