



Co-financed by the European Regional Development Fund

Inspire Policy Making with Territorial Evidence



eu2018bg.bg

Bulgarian Presidency of the Council  
of the European Union

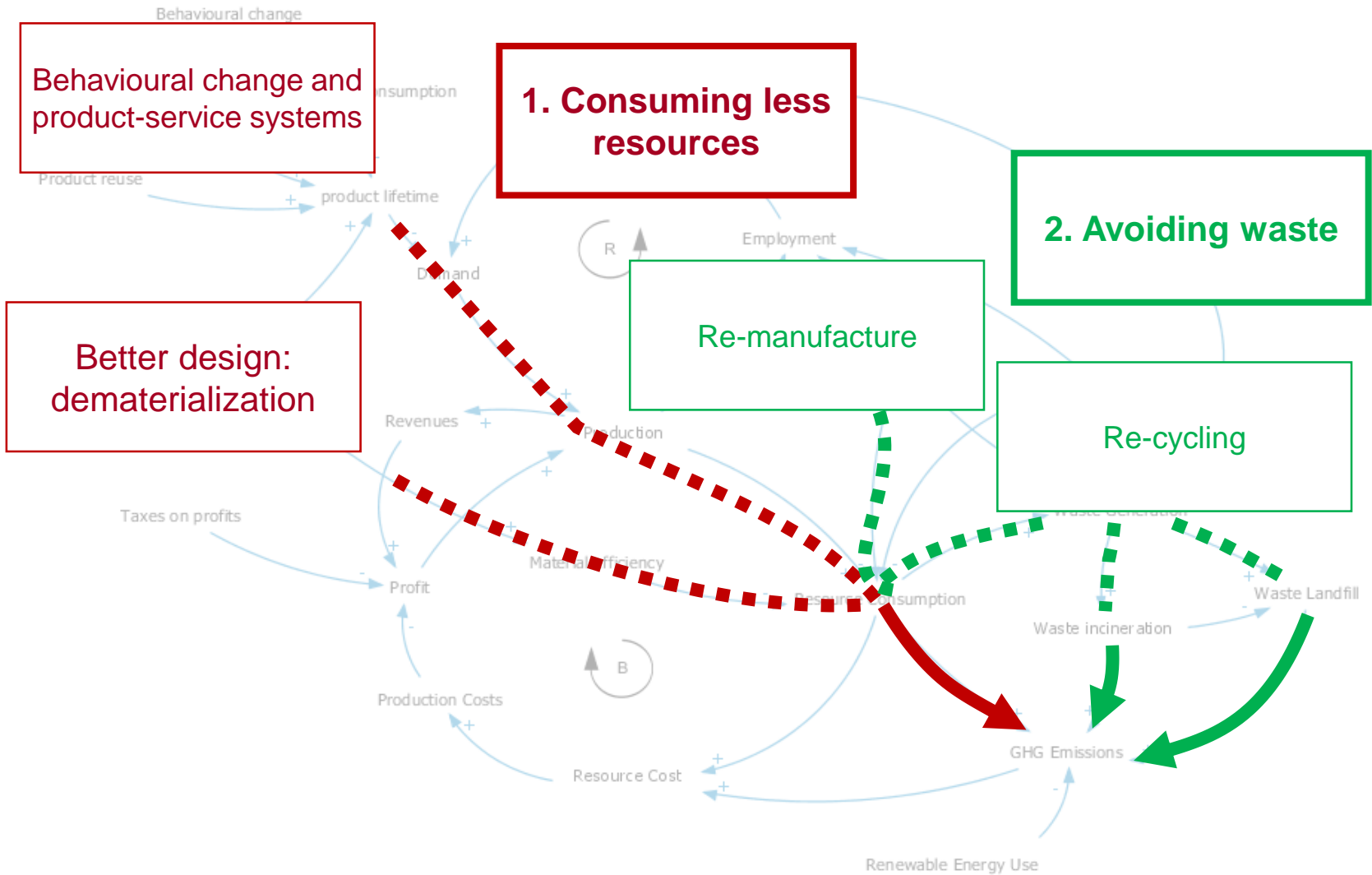
# ESPON CIRCTER Circular Economy and Territorial Consequences

ESPON Seminar

“Territorial Cohesion Post 2020: Integrated Territorial Development for  
Better Policies

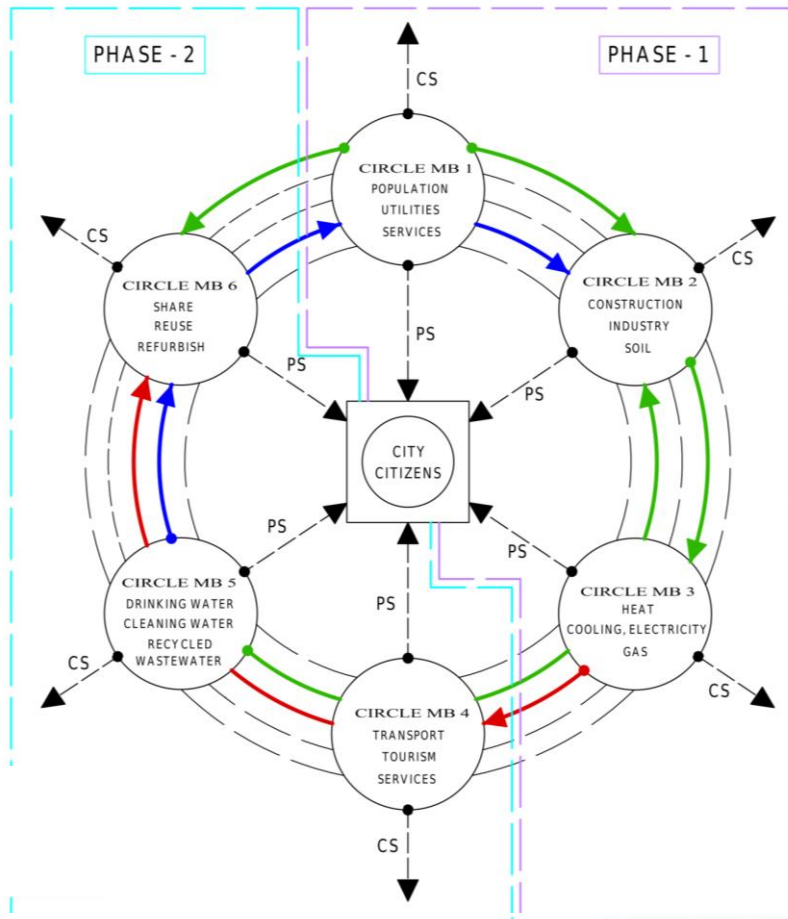
29-31 May 2018  
Sofia, Bulgaria

# 1. How can the transition towards circular economy address climate change challenges?



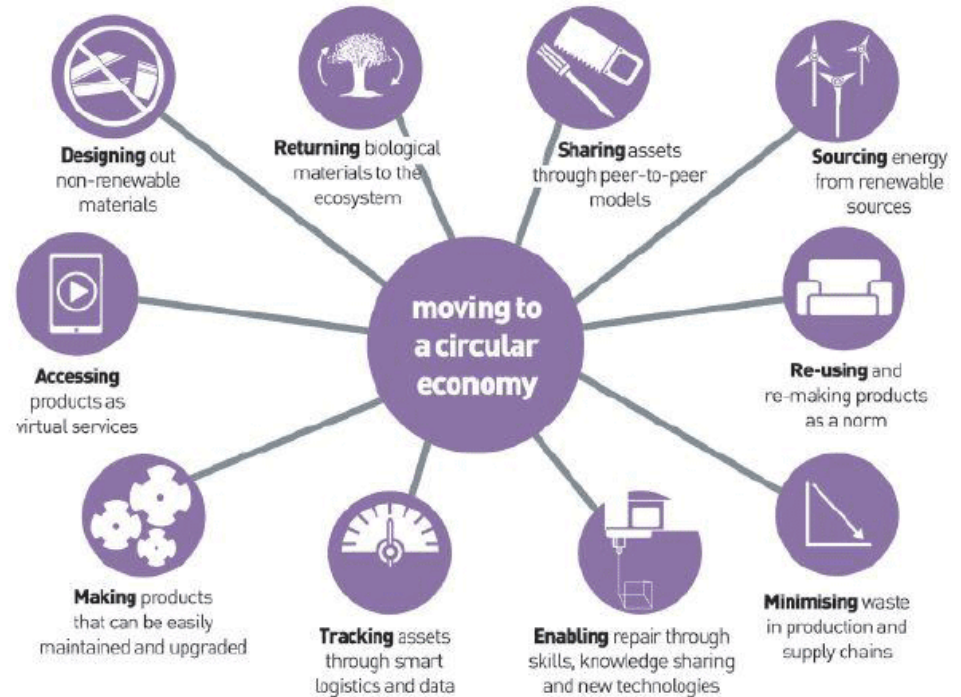
# Two Examples on how circular economy transitions can (also) address climate challenges

## 1. The WYCICLE project in Maribor



**LEGEND:**  
 PS - PUBLIC SERVICES  
 CS - COMMERCIAL ACTIVITY  
 MATERIAL WASTE FLOW  
 ENERGY FROM WASTE  
 RECYCLED WASTE WATER

## 2. Making Things Last: a circular economy strategy for Scotland



## 2. How can social, economic and environmental aspects related to the transition towards circular economy be embedded in planning and governance?

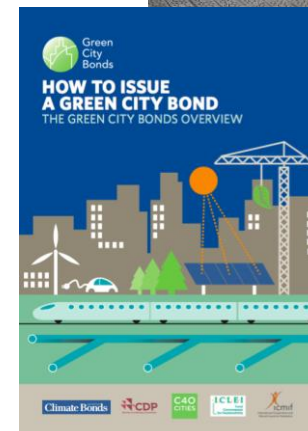
### 1. Make **sustainable urban and regional planning** a norm and not an exception:

- Reduce urban & regional metabolism: e.g. via **urban regeneration initiatives**, or **sustainable Urban Mobility Plans** – have a look at [eltis.org](http://eltis.org)
- Focus on **waste prevention** rather than on waste treatment! – have a look at [zerowasteurope.eu](http://zerowasteurope.eu)
- Boost the **bio-economy**, preserving **ecosystem services**, while creating ‘more value from nature’

### 2. Innovative finance:

- Complement ERDF, LIFE, H2020, EBRD, etc. with **Green bonds!** The EC to present an **Action Plan on Sustainable Finance**

### 3. But there are **many other ways** to work for a CE from sub-national levels. **Stay tuned!**



# 3. How can the transition towards circular economy create or use new types of territorial interactions?

## 1. Distance matters (again)

- **Proximity** (in a broad sense) to become an ever more important factor to sustain a circular economy (e.g. in industrial symbiosis systems, reverse logistics, etc.)
- **Spatial effects** will also play a role, as closer systems tend to be more similar than distant ones (1st law of geography)

## 2. Agglomeration economies matter (as usual)

- Agglomeration (**urban**) **economies** are critical for circular innovation

## 3. Life will not be the same (as it never was)

- New relations between rural and urban areas based on **blurred functional divisions**: cities will become greener and rural areas will assume new industrial functions Spatial



# Towards new geographies?



Image: weurbanist.com



Image: weurbanist.com



Image: biobasedeconomy.nl



Image: veolia.com



Co-financed by the European Regional Development Fund

Inspire Policy Making with Territorial Evidence

espon.eu   



eu2018bg.bg

Bulgarian Presidency of the Council  
of the European Union

# Thank you for your attention!

More info:

<https://www.espon.eu/circular-economy>

[carlos.tapia@tecnalia.com](mailto:carlos.tapia@tecnalia.com)