



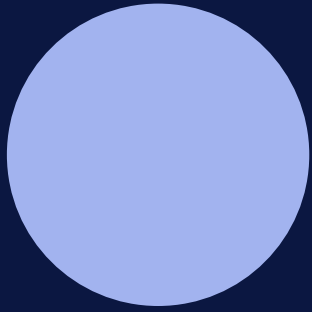
Co-financed by the European Regional Development Fund

Inspire Policy Making with Territorial Evidence

Small and Medium-sized Enterprises in Northern rural regions

Economic development in rural regions – new thinking and policies in finding and exploiting endogenous capacities
Oct. 2018; Vaxjö

B. Schuh OIR GmbH



Setting the Frame - Definitions

Small and Medium-Sized Enterprises in European Regions and Cities

Mapping and analysing territorial patterns and performance of SMEs in Europe

- Distribution patterns of SMEs across Europe (size, employment, sectors, economic weight, new SME start ups)
- Contribution of SMEs to business development job creation and innovation – with focus on creative/knowledge economy, ITC and low-carbon economy; key dynamics and drivers for SME growth
- Main opportunities, drivers and obstacles for SME growth in regions

Proposing territorial development strategies (targeting different regions) to further strengthen SMEs

- Identify strategies to support SMEs in different types of regions/territories
- Identify particular role of the public sector

ESPON SME project

ESPON SME project deals with

- Knowledge on the distribution patterns of SMEs across European regions
- The extent and the ways SMEs contribute to business development, job creation and innovation
- Policy support options for SME development – to come

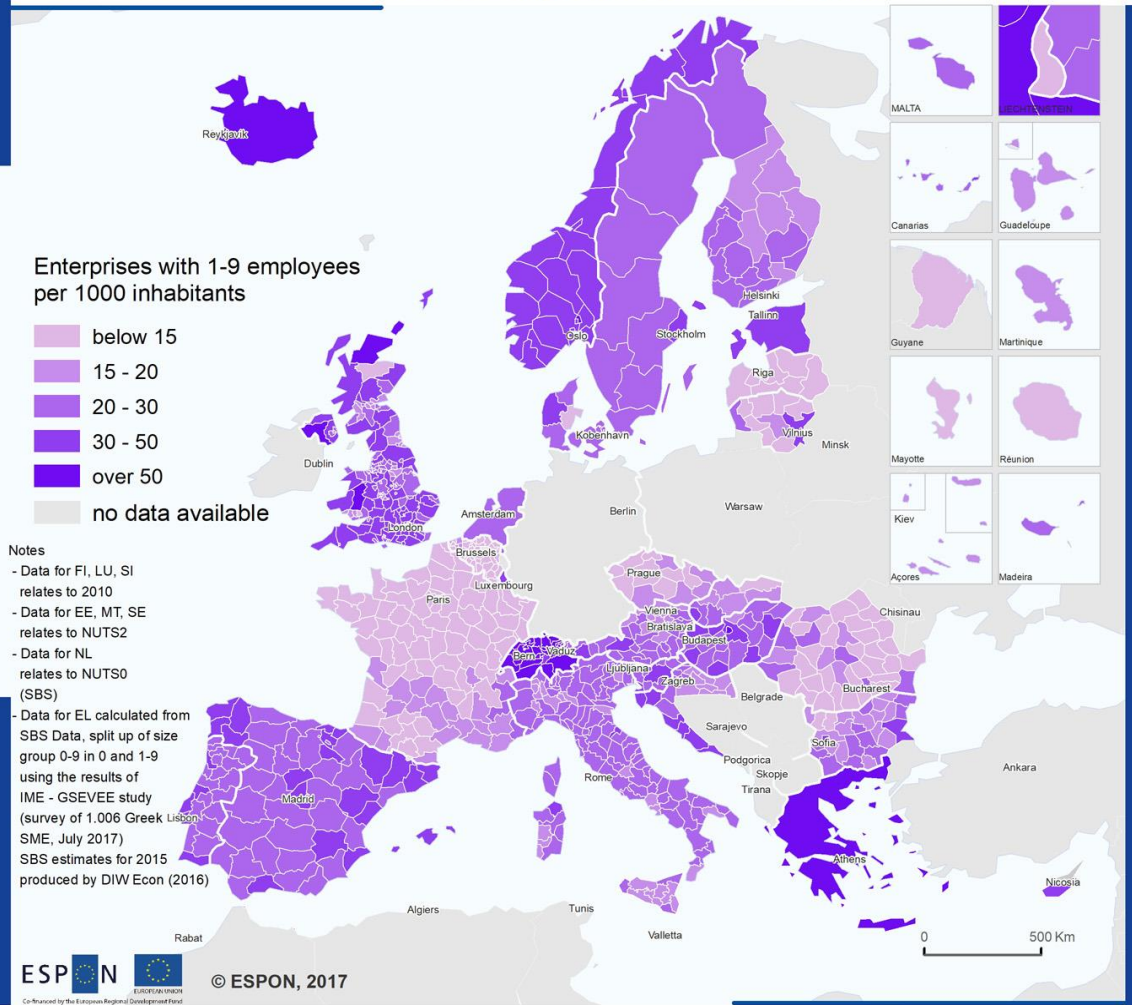
Small and medium-sized enterprises (SMEs) are often referred to as the backbone of the European economy, providing a potential source for jobs and economic growth

- micro enterprises: with less than 10 persons employed;
- small enterprises: with 10-49 persons employed;
- medium-sized enterprises: with 50-249 persons employed;
- small and medium sized enterprises (SMEs): with 1-249 persons employed;
- large enterprises: with 250 or more persons employed.

2

SMEs – the status

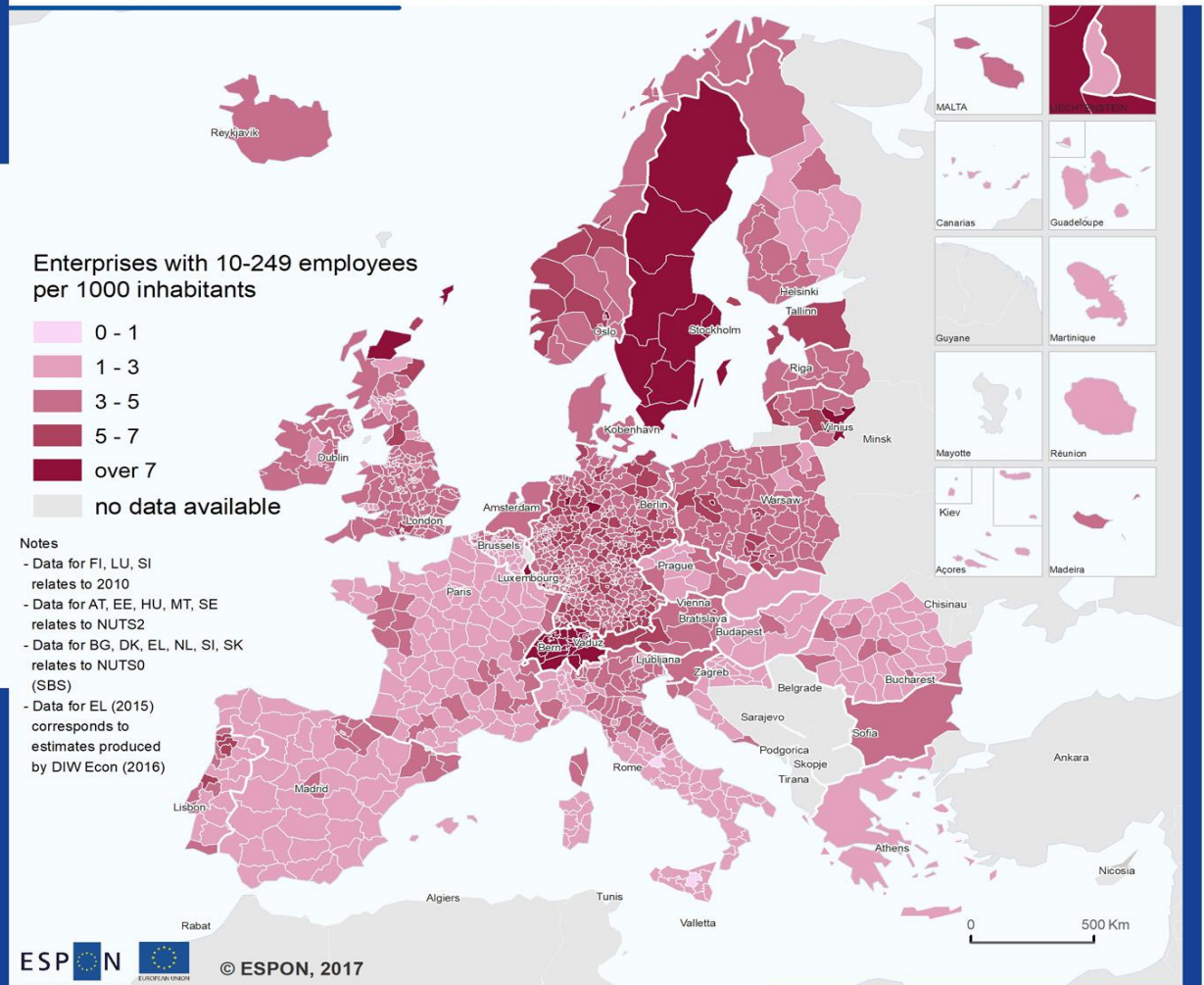
Enterprises with 1-9 persons employed per 1000 inhabitants, 2014



Regional level: NUTS 3 / NUTS 2 / NUTS 0 (version 2013)
Source: ESPON SME, 2017

Origin of data: Eurostat Business demography, Structural Business Statistics, Statistics Austria national SBS, Statistics Belgium Demografie Ondernemingen, ORBIS, Beschäftigtenstatistik Bundesagentur, national SBS, Statistics Finland national BD, Insee Direction des statistiques démographiques et sociales (DSDS), Financial Agency, Central Statistics Office (CSO) national BD, Statistics Iceland national BD, Amt für Statistik Fürstentum Liechtenstein - Beschäftigungsstatistik, Statistics Norway national BD, Central Statistical Office Poland national BD, Statistics Portugal Integrated Business Accounts System, National Statistics Institute Romania national SBS, Statistics Sweden Business Register, Bundesamt für Statistik Schweiz, SBA Factsheet Greece 2016, Small Enterprises' Institute of the Hellenic Confederation of Professionals, Craftsmen and Merchants (IME GSEVEE)
CC - UMS RIATE for administrative boundaries

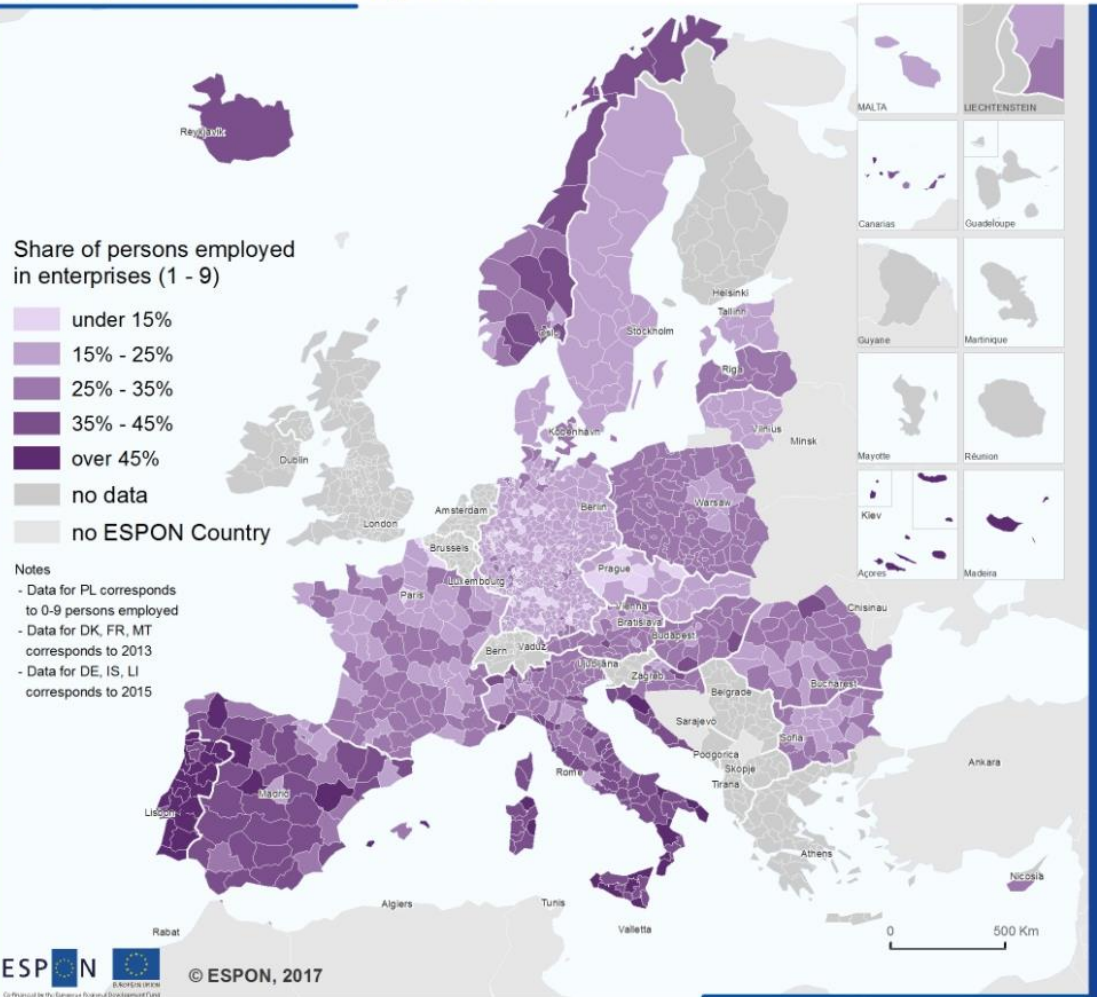
Enterprises with 10-249 persons employed per 1000 inhabitants, 2014



Regional level: NUTS 3 / NUTS 2 / NUTS 0 (version 2013)
Source: ESPON SME, 2017

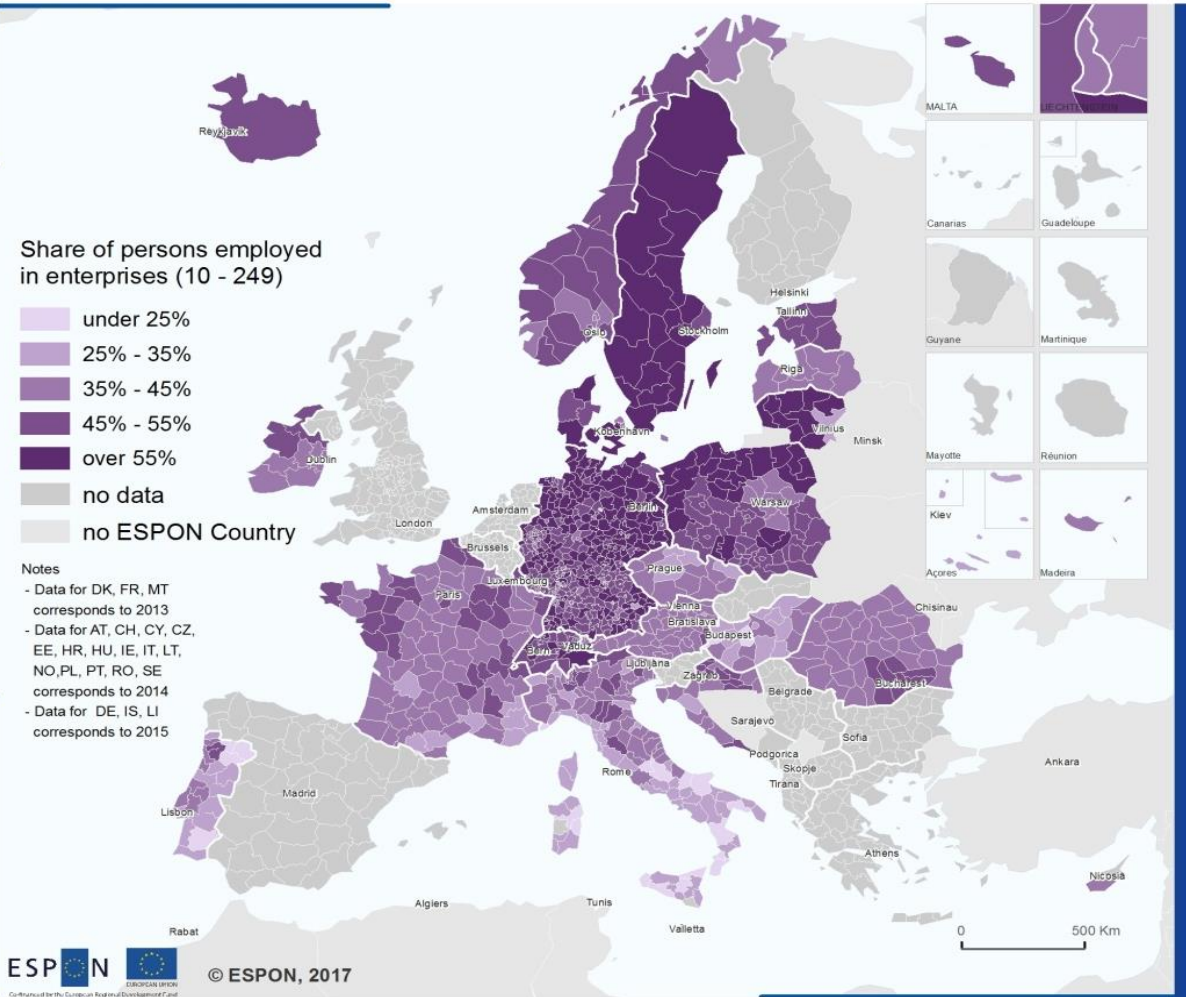
Origin of data: Eurostat Business demography, Structural Business Statistics, Statistics Austria national SBS, Statistics Belgium Demografie Ondernemingen, ORBIS, Beschäftigtenstatistik Bundesagentur, national SBS, Statistics Finland national BD, Insee Direction des statistiques démographiques et sociales (DSDS), Financial Agency, Central Statistics Office (CSO) national BD, Statistics Iceland national BD, Amt für Statistik Fürstentum Liechtenstein - Beschäftigungsstatistik, Statistics Norway national BD, Central Statistical Office Poland national BD, Statistics Portugal Integrated Business Accounts System, National Statistics Institute Romania national SBS, Statistics Sweden Business Register, Bundesamt für Statistik Schweiz, SBA Factsheet Greece 2016
CC - UMS RIATE for administrative boundaries

Share of persons employed in micro enterprises (1 - 9 persons employed), 2014



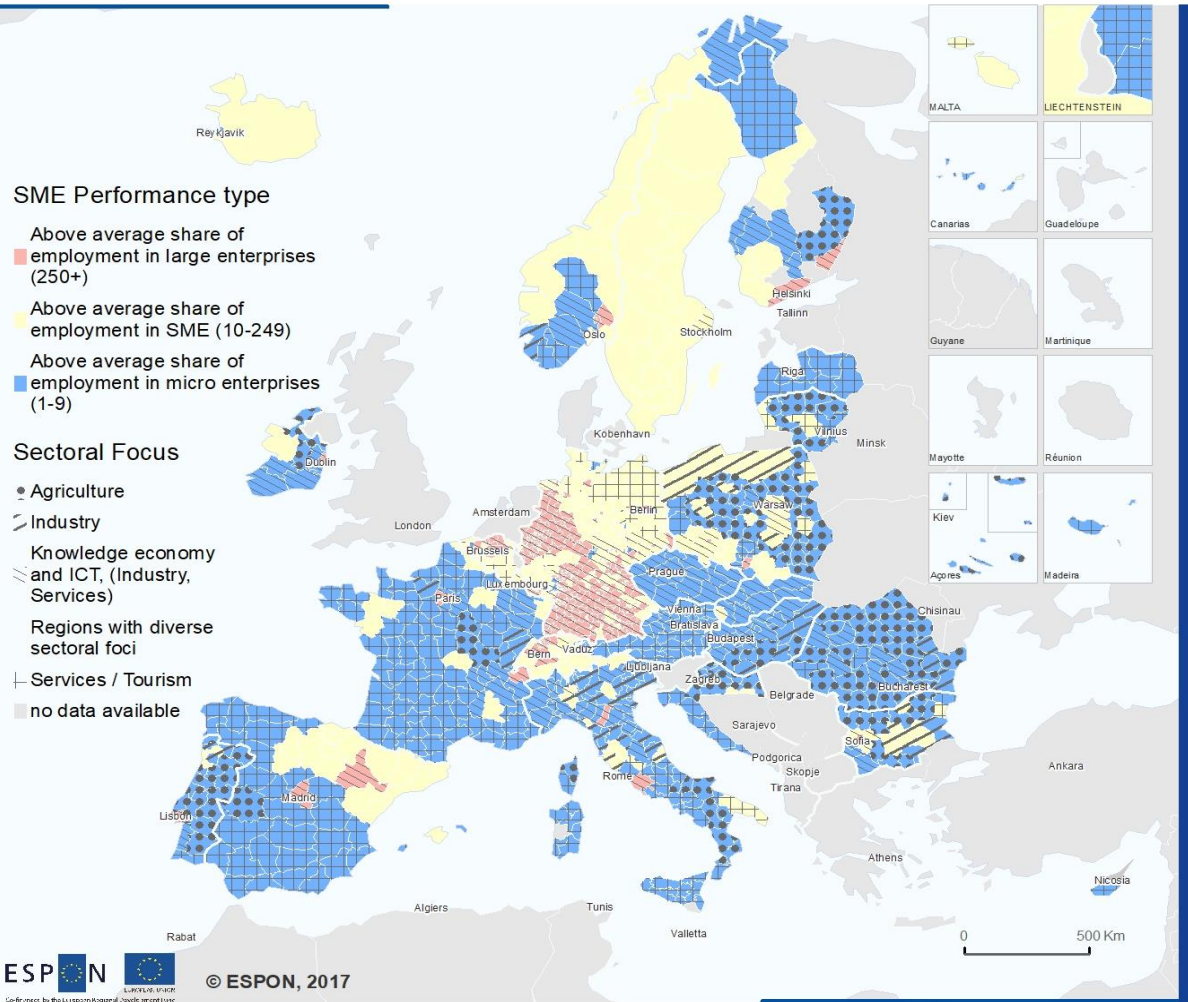
Regional level: NUTS 3 / NUTS 2 / NUTS 0 (version 2013 / 2010 / 2006)
 Source: ESPON SME, 2017
 Origin of data: Eurostat Business demography, national statistical offices
 CC - UMS RIATE for administrative boundaries

Share of persons employed in small and medium enterprises (10 - 249), 2014



Regional level: NUTS 3 / NUTS 2 / NUTS 0 (version 2013 / 2010 / 2006)
 Source: ESPON SME, 2017
 Origin of data: Eurostat Business demography, national statistical offices
 CC - UMS RIATE for administrative boundaries

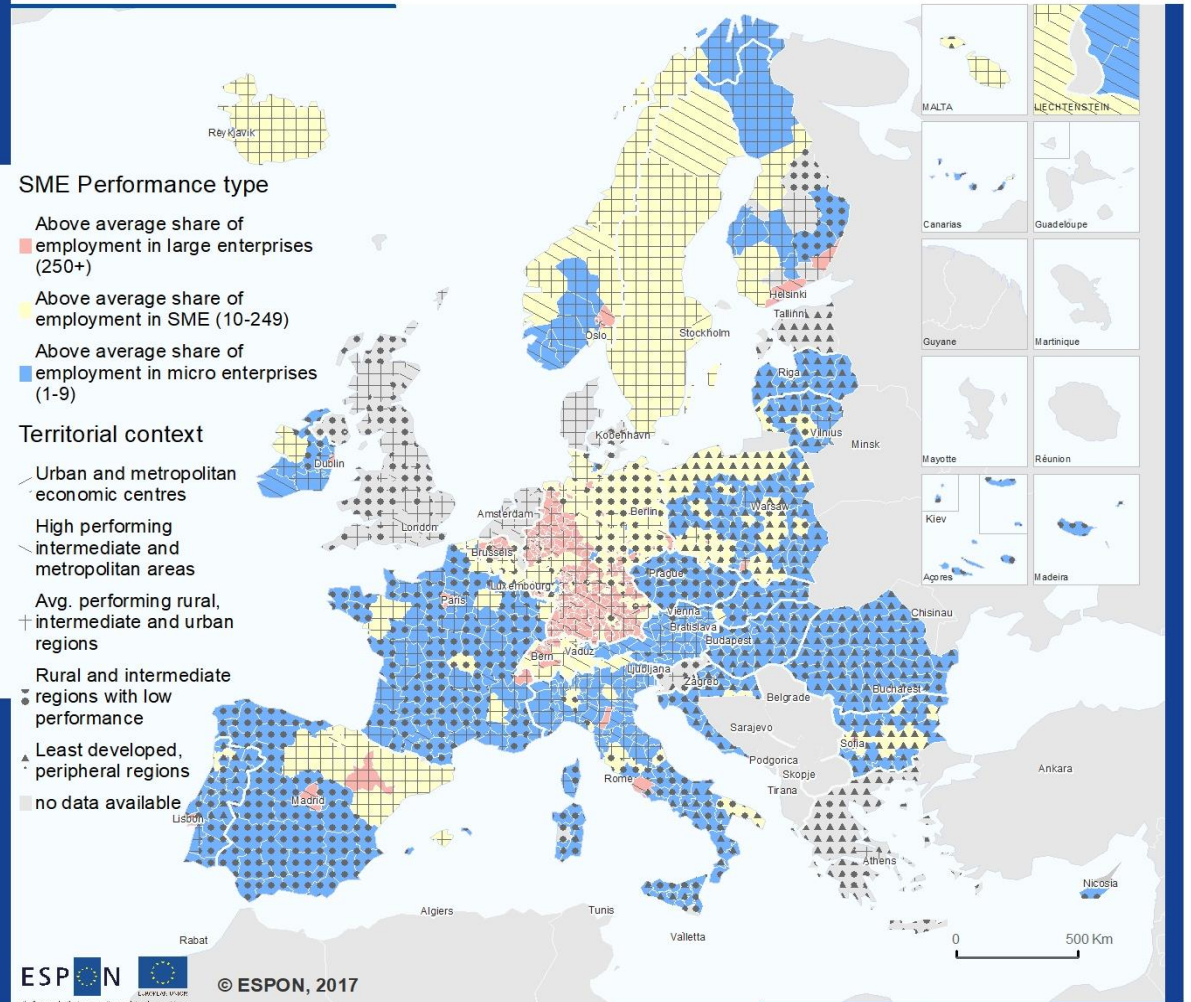
Regional SME Typology: Combination of SME performance and sectoral focus



Regional level: NUTS 3 / NUTS 2 / NUTS 0 (version 2013)
Source: ESPON SME, 2017

Origin of data: Eurostat Business demography, Structural Business Statistics, Statistics Austria national SBS, Statistics Belgium Demografie Ondernemingen, ORBIS, Beschäftigtenstatistik Bundesagentur, national SBS, Statistics Finland national BD, Insee. Direction des statistiques démographiques et sociales (DSDS), Financial Agency, Central Statistics Office (CSO) national BD, Statistics Iceland national BD, Amt für Statistik Fürstentum Liechtenstein - Beschäftigungsstatistik, Statistics Norway national BD, Central Statistical Office Poland national BD, Statistics Portugal Integrated Business Accounts System, National Statistics Institute Romania national SBS, Statistics Sweden Business Register, Bundesamt für Statistik Schweiz
CC - UMS RIATE for administrative boundaries

Regional SME Typology: Combination of SME performance and territorial context

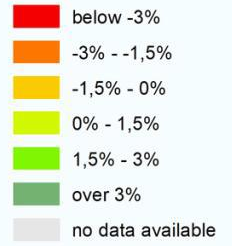


Regional level: NUTS 3 / NUTS 2 / NUTS 0 (version 2013)
Source: ESPON SME, 2017

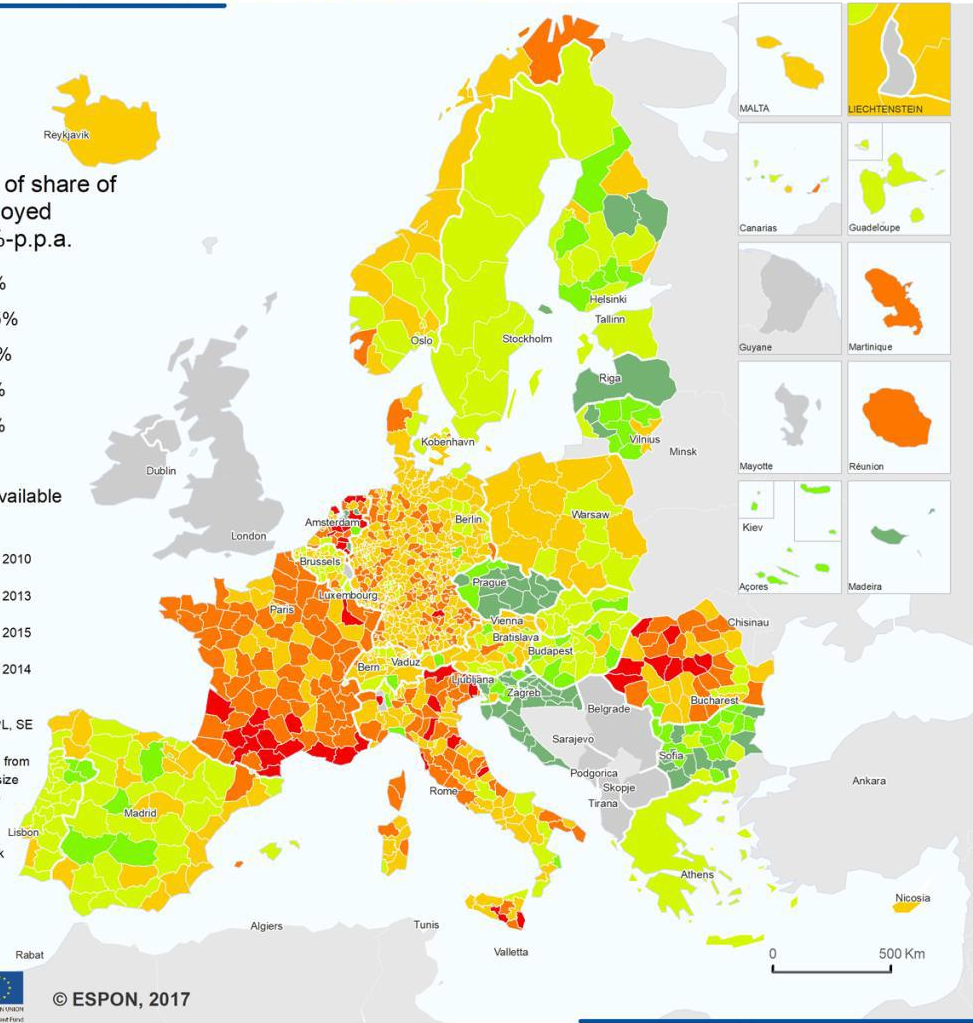
Origin of data: Eurostat Business demography, Structural Business Statistics, Statistics Austria national SBS, Statistics Belgium Demografie Ondernemingen, ORBIS, Beschäftigtenstatistik Bundesagentur, national SBS, Statistics Finland national BD, Insee. Direction des statistiques démographiques et sociales (DSDS), Financial Agency, Central Statistics Office (CSO) national BD, Statistics Iceland national BD, Amt für Statistik Fürstentum Liechtenstein - Beschäftigungsstatistik, Statistics Norway national BD, Central Statistical Office Poland national BD, Statistics Portugal Integrated Business Accounts System, National Statistics Institute Romania national SBS, Statistics Sweden Business Register, Bundesamt für Statistik Schweiz
CC - UMS RIATE for administrative boundaries

Development of the share of persons employed in micro enterprises (1-9 persons employed) in %-p.p.a., 2008-2014

Development of share of persons employed in micros in %-p.p.a.



Notes
 - Data for FI, SI corresponds to 2008 - 2010
 - Data for DK, FR, MT corresponds to 2008 - 2013
 - Data for DE corresponds to 2008 - 2015
 - Data for CZ, EE, LU corresponds to 2010 - 2014
 - Data for CH, HR, LT relates to 2011-2014
 - Data for EE, LV, MT, PL, SE relates to NUTS2
 - Data for EL calculated from SBS Data, split up of size group 0-9 in 0 and 1-9 using the results of IME - GSEVEE study (survey of 1.006 Greek SME, July 2017)



Regional level: NUTS 3 / NUTS 2 / NUTS 0 (version 2013)
 Source: ESPON SME, 2017

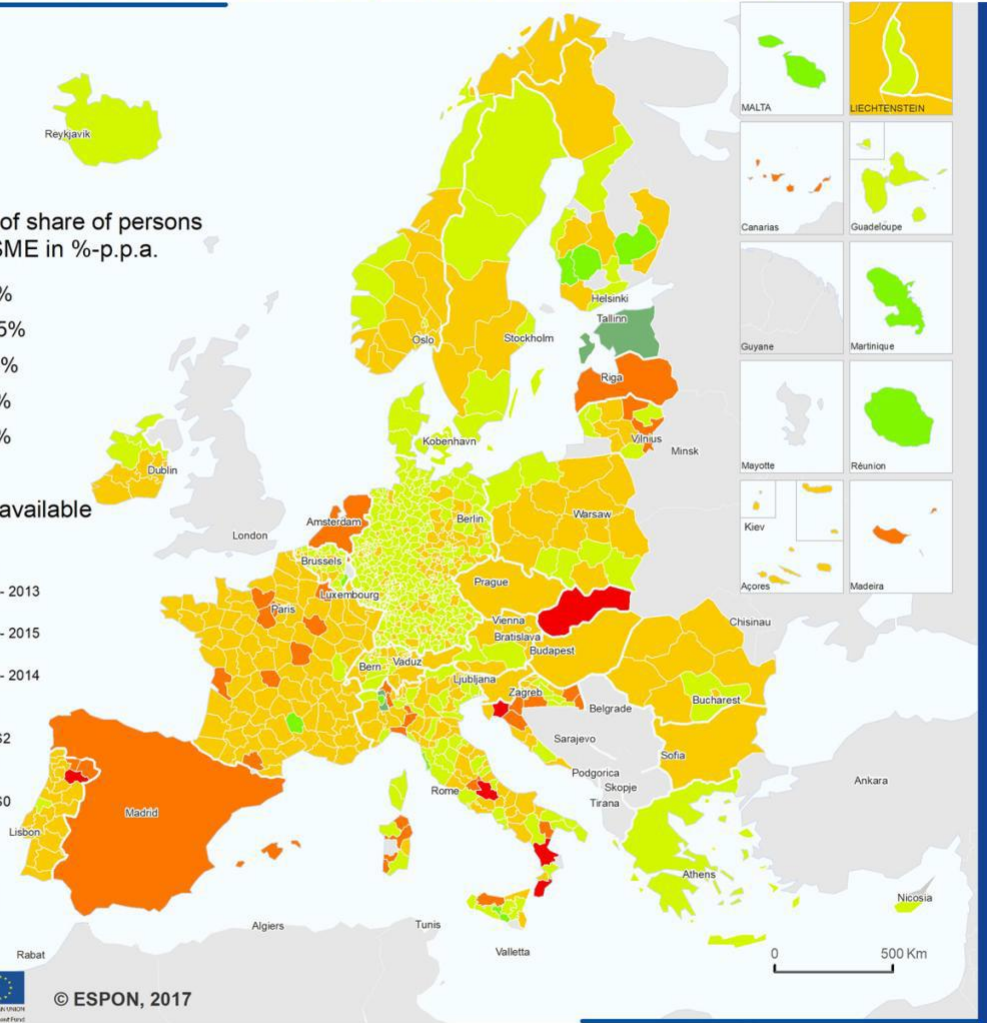
Origin of data: Eurostat Business demography, Statistics Austria national SBS, Statistics Belgium Demografie Ondernemingen, ORBIS, Beschäftigtenstatistik Bundesagentur, national SBS, Statistics Finland national BD, Insee. Direction des statistiques démographiques et sociales (DSDS), Financial Agency, Central Statistical Office (CSO) national BD, Statistics Iceland national BD, Amt für Statistik Fürstentum Liechtenstein - Beschäftigungsstatistik, Statistics Norway national BD, Central Statistical Office Poland national BD, Statistics Portugal Integrated Business Accounts System, National Statistics Institute Romania national SBS, Statistics Sweden Business Register, Bundesamt für Statistik Schweiz, Small Enterprises' Institute of the Hellenic Confederation of Professionals, Craftsmen and Merchants (IME GSEVEE)
 CC - UMS RIATE for administrative boundaries

Development of share of persons employed in small and medium enterprises (10-249 persons employed) in %-p.p.a., 2008-2014

Development of share of persons employed in SME in %-p.p.a.



Notes
 - Data for DK, FR, MT corresponds to 2008 - 2013
 - Data for DE corresponds to 2008 - 2015
 - Data for CZ, EE, LU corresponds to 2010 - 2014
 - Data for AT, DK, EE, LV, MT, PL, RO, SE corresponds to NUTS2
 - Data for BG, CZ, ES, HU, NL, SI, SK corresponds to NUTS0 (SBS)
 - Data for EL (2015) corresponds to estimates produced by DIW Econ (2016)



Regional level: NUTS 3 / NUTS 2 / NUTS 0 (version 2013)
 Source: ESPON SME, 2017

Origin of data: Eurostat Business demography, Structural Business Statistics, Statistics Austria national SBS, Statistics Belgium Demografie Ondernemingen, ORBIS, Beschäftigtenstatistik Bundesagentur, national SBS, Statistics Finland national BD, Insee. Direction des statistiques démographiques et sociales (DSDS), Financial Agency, Central Statistical Office (CSO) national BD, Statistics Iceland national BD, Amt für Statistik Fürstentum Liechtenstein - Beschäftigungsstatistik, Statistics Norway national BD, Central Statistical Office Poland national BD, Statistics Portugal Integrated Business Accounts System, National Statistics Institute Romania national SBS, Statistics Sweden Business Register, Bundesamt für Statistik Schweiz, SBA Factsheet Greece 2016
 CC - UMS RIATE for administrative boundaries

3

SMEs – the drivers

What determines the expansion of microenterprise employment?

- education level and the component *governance quality* → *determinants for employment*
- *education* is the most important driver for the performance of microenterprises

What determines the expansion of small and medium-sized enterprises?

- *governance quality* plays a major role in the growth of small and medium-sized enterprises & the component *urbanisation* (the opposite of rurality and highly correlated with *accessibility*)

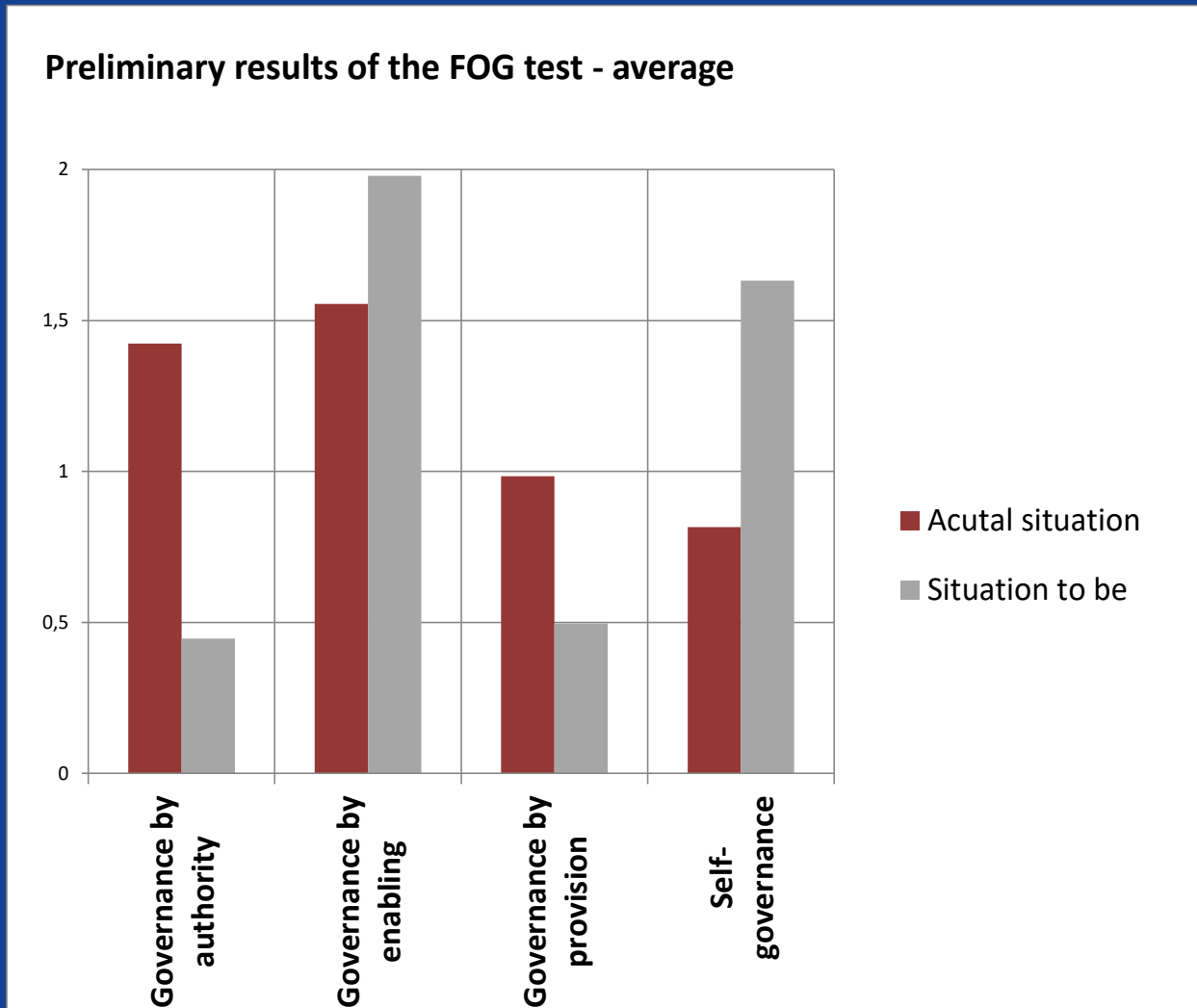
What determines enterprise birth rates?

- *accessibility* (urbanisation) and *governance quality* drive enterprise birth rates

4

SMEs – the Governance

FOG test results of all regions: comparison actual situation and situation as it should be





Co-financed by the European Regional Development Fund

Inspire Policy Making with Territorial Evidence

// Thank you

Bernd SCHUH; OIR GmbH; schuh@oir.at