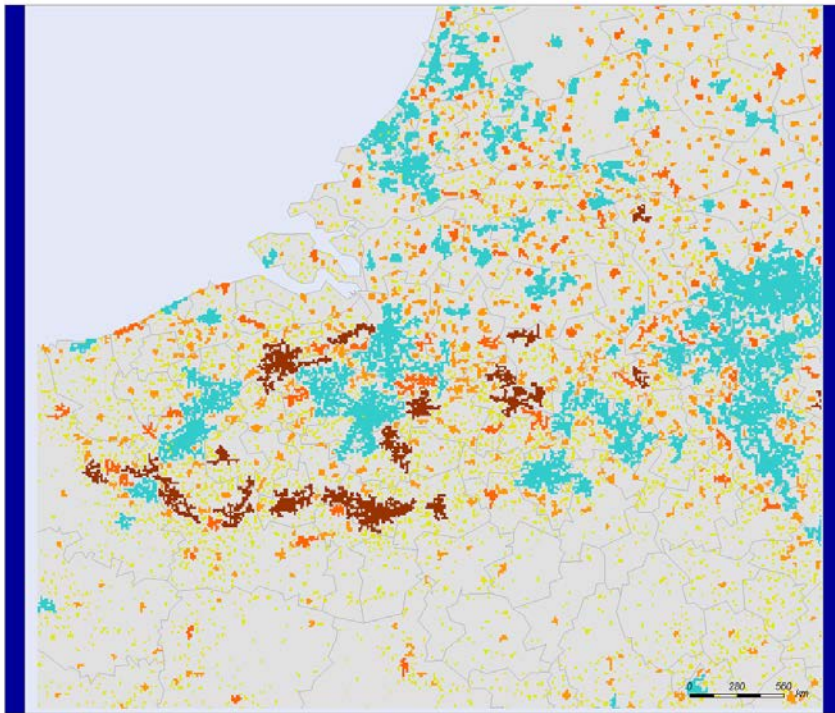


# TOWN Interim Report: ANNEX 3\_Town typology in case study regions

**Figure 1. TOWN typology 3 in TOWN case studies regions**

**(A) Flanders (BE2)**



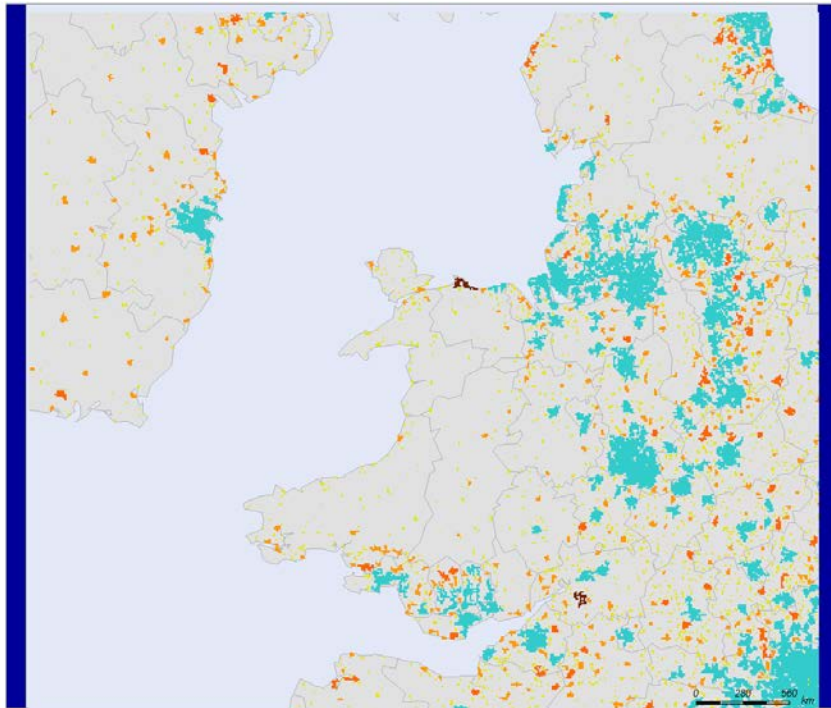
- High-density urban clusters: Density > 1500 inh./Kmq  
Total population >50000 inh.
- Large SMT: Density >300 <1500 inh./Kmq  
Total population >50000 inh.
- Medium SMT: Density >300 inh./Kmq  
Total population >25000 <5000 inh.
- Small SMT: Density >300 inh./Kmq  
Total population >5000 <25000 inh.
- Very Small Towns: Density > 300 inh./Kmq  
Total population < 5000

ESPON

EUROPEAN UNION  
Part-financed by the European Regional Development Fund  
INVESTING IN YOUR FUTURE

Regional level: NUTS 2  
Source: Own elaboration on EUROSTAT/LFS data  
Origin of data: EUROSTAT/LFS data  
Authors: F. Brandajs, A.P. Russo, D. Serrano Giné  
©EuroGeographics Association for administrative boundaries

**(B) Wales (UKL)**



- High-density urban clusters: Density > 1500 inh./Kmq  
Total population >50000 inh.
- Large SMT: Density >300 <1500 inh./Kmq  
Total population >50000 inh.
- Medium SMT: Density >300 inh./Kmq  
Total population >25000 <5000 inh.
- Small SMT: Density >300 inh./Kmq  
Total population >5000 <25000 inh.
- Very Small Towns: Density > 300 inh./Kmq  
Total population < 5000

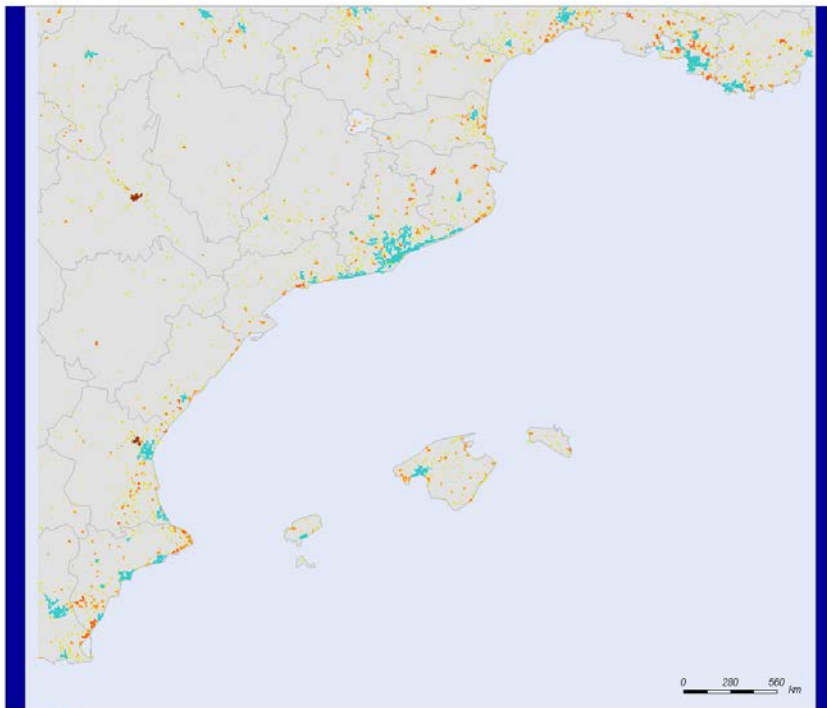
ESPON

EUROPEAN UNION  
Part-financed by the European Regional Development Fund  
INVESTING IN YOUR FUTURE

Regional level: NUTS 2  
Source: Own elaboration on EUROSTAT/LFS data  
Origin of data: EUROSTAT/LFS data  
Authors: F. Brandajs, A.P. Russo, D. Serrano Giné  
©EuroGeographics Association for administrative boundaries

# TOWN Interim Report: ANNEX 3\_Town typology in case study regions

## (C) East of Spain (ES5)



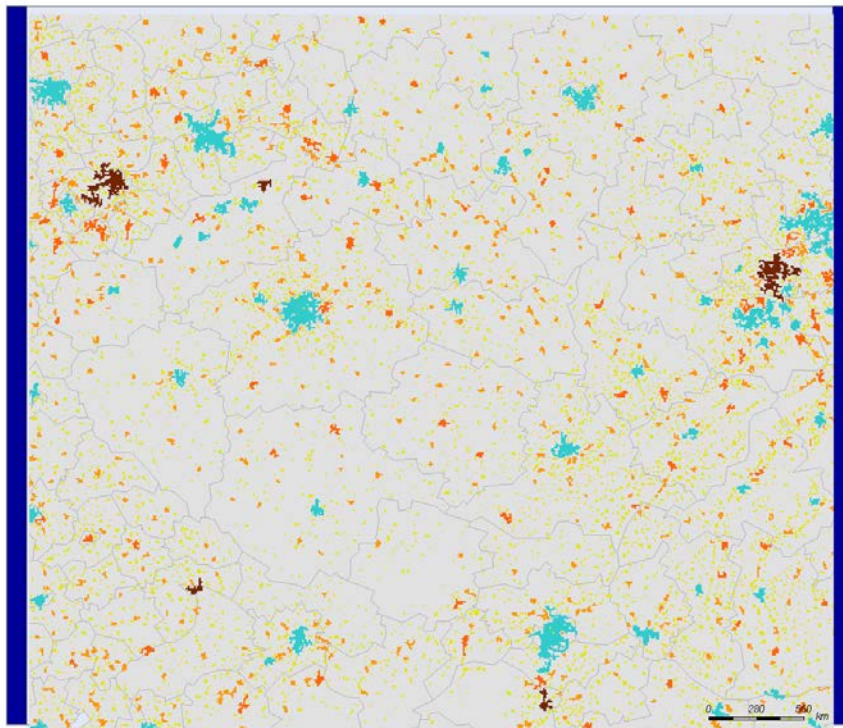
- High-density urban clusters: Density > 1500 inh./Kmq  
Total population >50000 inh.
- Large SMT: Density >300 <1500 inh./Kmq  
Total population >50000 inh.
- Medium SMT: Density >300 inh./Kmq  
Total population >25000 <50000 inh.
- Small SMT: Density >300 inh./Kmq  
Total population >5000 <25000 inh.
- Very Small Towns: Density > 300 inh./Kmq  
Total population < 5000

ESP N

EUROPEAN UNION  
Part-financed by the European Regional Development Fund  
INVESTING IN YOUR FUTURE

Regional level: NUTS 2  
Source: Own elaboration on EUROSATLFS data  
Origin of data: EUROSATLFS data  
Authors: F. Brandajs, A.P. Russo, D. Serrano Giné  
© EuroGeographics Association for administrative boundaries

## (D) Czech Republic (CZ0)



- High-density urban clusters: Density > 1500 inh./Kmq  
Total population >50000 inh.
- Large SMT: Density >300 <1500 inh./Kmq  
Total population >50000 inh.
- Medium SMT: Density >300 inh./Kmq  
Total population >25000 <50000 inh.
- Small SMT: Density >300 inh./Kmq  
Total population >5000 <25000 inh.
- Very Small Towns: Density > 300 inh./Kmq  
Total population < 5000

ESP N

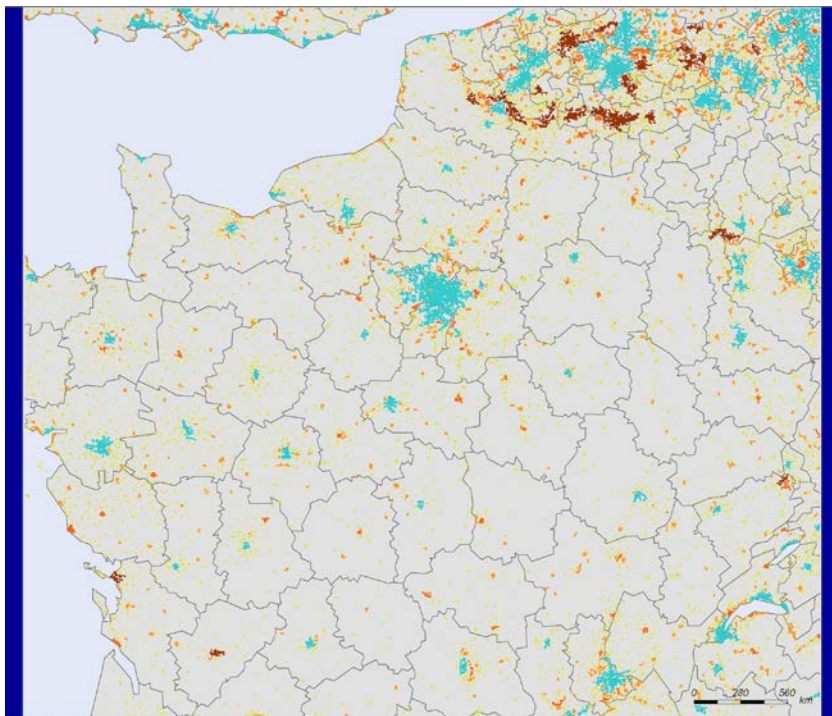
EUROPEAN UNION  
Part-financed by the European Regional Development Fund  
INVESTING IN YOUR FUTURE

Regional level: NUTS 2  
Source: Own elaboration on EUROSATLFS data  
Origin of data: EUROSATLFS data  
Authors: F. Brandajs, A.P. Russo, D. Serrano Giné  
© EuroGeographics Association for administrative boundaries



# TOWN Interim Report: ANNEX 3\_Town typology in case study regions

## (E) Parisian Basin incl. Île de France (FR1-2)



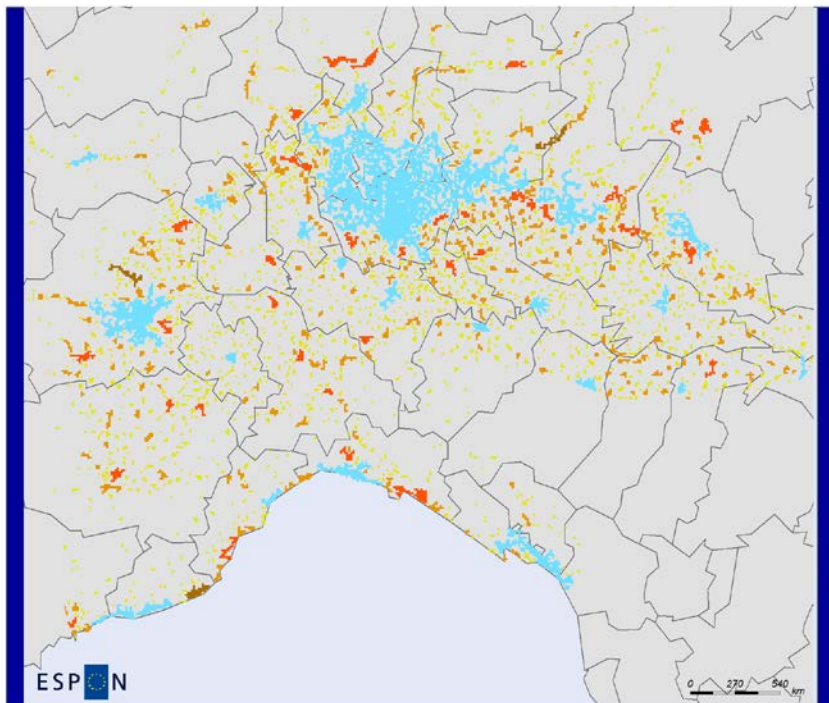
- High-density urban clusters: Density > 1500 inh./Kmq  
Total population >50000 inh.
- Large SMT: Density >300 <1500 inh./Kmq  
Total population >50000 inh.
- Medium SMT: Density >300 inh./Kmq  
Total population >25000 <50000 inh.
- Small SMT: Density >300 inh./Kmq  
Total population >5000 <25000 inh.
- Very Small Towns: Density > 300 inh./Kmq  
Total population < 5000

ESP N

EUROPEAN UNION  
Part-financed by the European Regional Development Fund  
INVESTING IN YOUR FUTURE

Regional level: NUTS 2  
Source: Own elaboration on EUROSTAT/LFS data  
Origin of data: EUROSTAT/LFS data  
Authors: F. Brandajs, A.P. Russo, D.Serrano Giné  
© EuroGeographics Association for administrative boundaries

## (F) North West Italy (ITC)



- High-density urban clusters: Density > 1500 inh./Kmq  
Total population >50000 inh.
- Large SMT: Density >300 <1500 inh./Kmq  
Total population >50000 inh.
- Medium SMT: Density >300 inh./Kmq  
Total population >25000 <50000 inh.
- Small SMT: Density >300 inh./Kmq  
Total population >5000 <25000 inh.
- Very Small Towns: Density > 300 inh./Kmq  
Total population < 5000

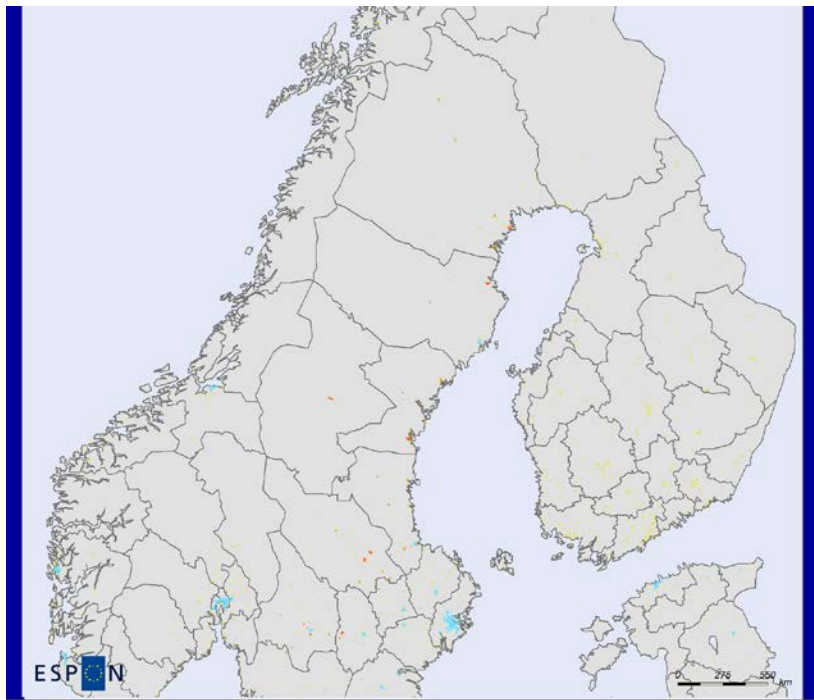
ESP N

EUROPEAN UNION  
Part-financed by the European Regional Development Fund  
INVESTING IN YOUR FUTURE

Regional level: NUTS 2  
Source: Own elaboration on EUROSTAT/LFS data  
Origin of data: EUROSTAT/LFS data  
Authors: F. Brandajs, A.P. Russo, D. Serrano Giné  
© EuroGeographics Association for administrative boundaries

# TOWN Interim Report: ANNEX 3\_Town typology in case study regions

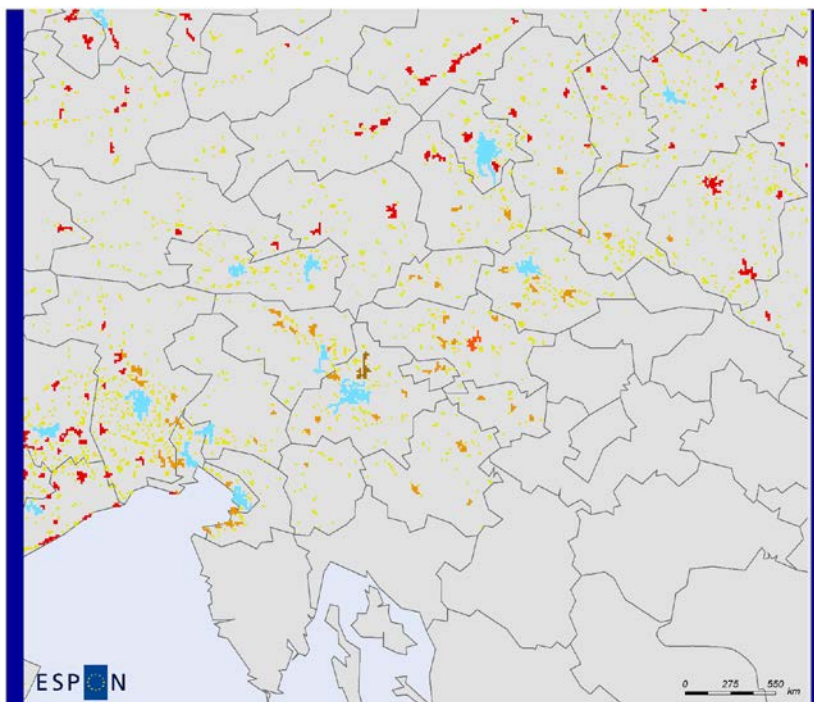
## (G) North Sweden (SE3)



- High-density urban clusters: Density > 1500 inh./Kmq  
Total population >50000 inh.
- Large SMT: Density >300 <1500 inh./Kmq  
Total population >50000 inh.
- Medium SMT: Density >300 inh./Kmq  
Total population >25000 <50000 inh.
- Small SMT: Density >300 inh./Kmq  
Total population >5000 <25000 inh.
- Very Small Towns: Density > 300 inh./Kmq  
Total population < 5000

Regional level: NUTS 2  
 Source: Own elaboration on EUROSTAT/LFS data  
 Origin of data: EUROSTAT/LFS data  
 Authors: F. Brandajs, A.P. Russo, D. Serrano Giné  
 © EuroGeographics Association for administrative boundaries

## (H) Slovenia (SI0)



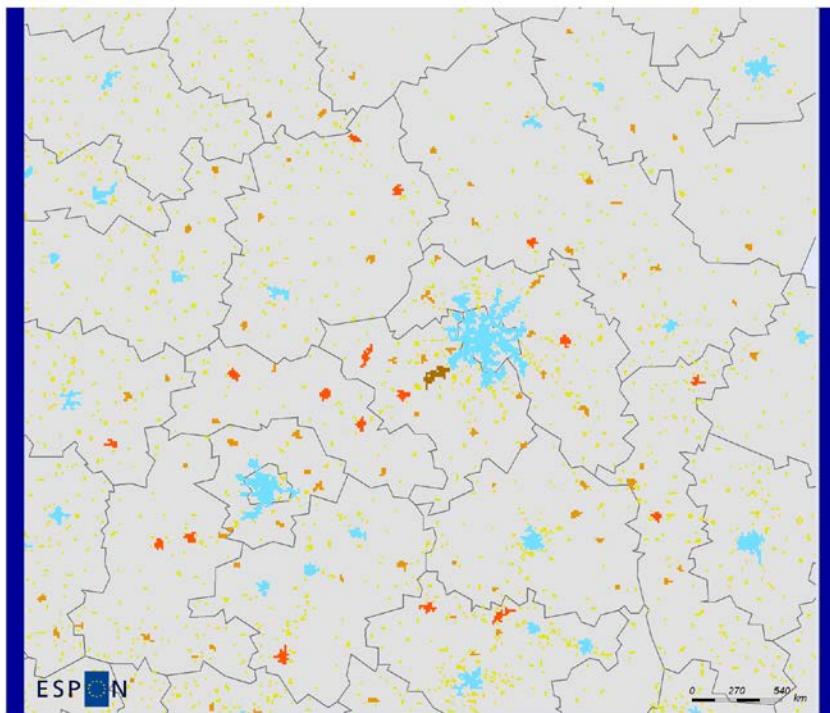
- High-density urban clusters: Density > 1500 inh./Kmq  
Total population >50000 inh.
- Large SMT: Density >300 <1500 inh./Kmq  
Total population >50000 inh.
- Medium SMT: Density >300 inh./Kmq  
Total population >25000 <50000 inh.
- Small SMT: Density >300 inh./Kmq  
Total population >5000 <25000 inh.
- Very Small Towns: Density > 300 inh./Kmq  
Total population < 5000

Regional level: NUTS 2  
 Source: Own elaboration on EUROSTAT/LFS data  
 Origin of data: EUROSTAT/LFS data  
 Authors: F. Brandajs, A.P. Russo, D. Serrano Giné  
 © EuroGeographics Association for administrative boundaries



# TOWN Interim Report: ANNEX 3\_Town typology in case study regions

## (I) Central Region (PL1)



- High-density urban clusters: Density > 1500 inh./Kmq  
Total population >50000 inh.
- Large SMT: Density >300 <1500 inh./Kmq  
Total population >50000 inh.
- Medium SMT: Density >300 inh./Kmq  
Total population >25000 <50000 inh.
- Small SMT: Density >300 inh./Kmq  
Total population >5000 <25000 inh.
- Very Small Towns: Density > 300 inh./Kmq  
Total population < 5000

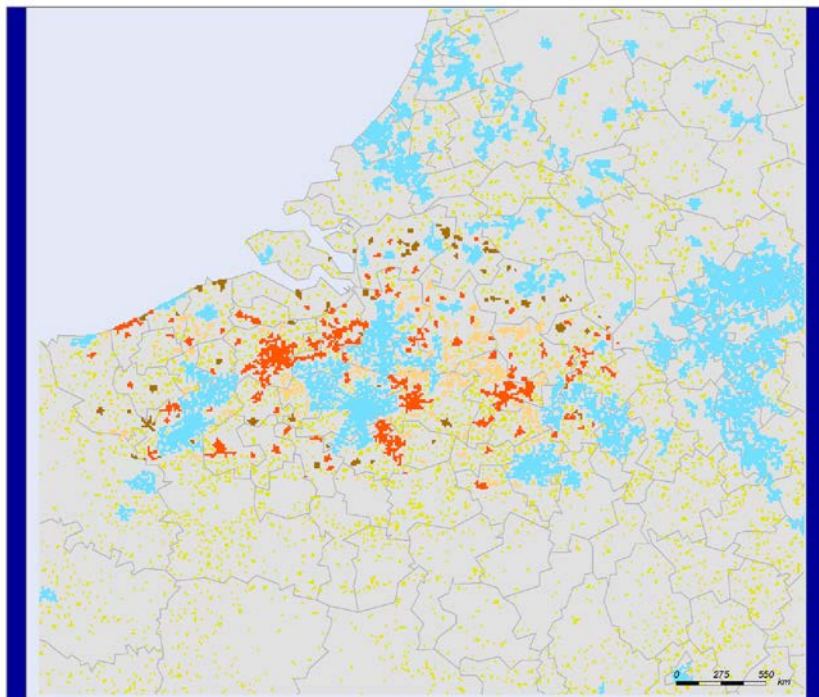
EUROPEAN UNION  
Part-financed by the European Regional Development Fund  
INVESTING IN YOUR FUTURE

Regional level: NUTS 2  
Source: Own elaboration on EUROSTAT/LFS data  
Origin of data: EUROSTAT/LFS data  
Authors: F. Brandajs, A.P. Russo, D. Serrano Giné  
© EuroGeographics Association for administrative boundaries

# TOWN Interim Report: ANNEX 3\_Town typology in case study regions

Figure 2. TOWN typology 4 in TOWN case studies regions

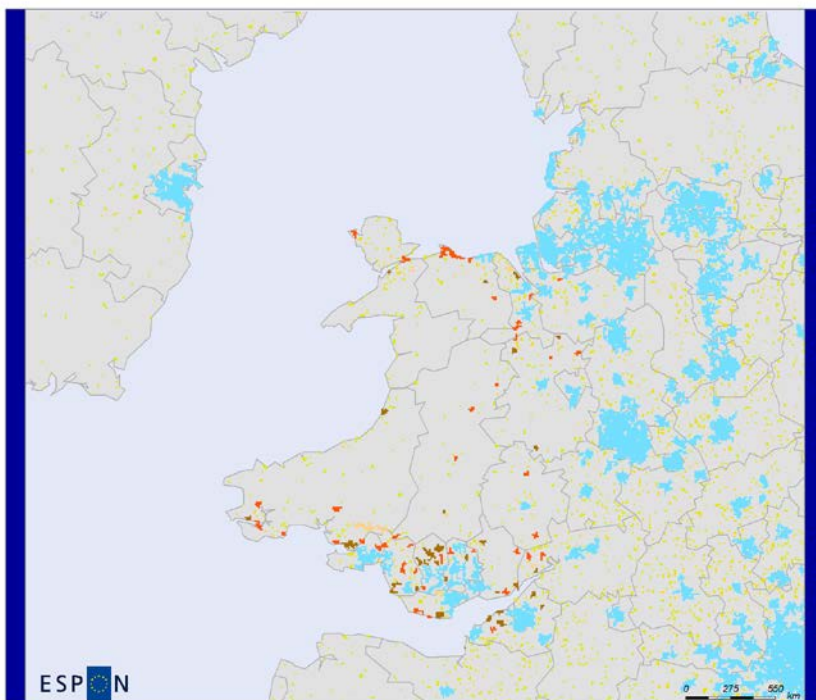
## (A) Flanders (BE2)



- High-density urban clusters: Density > 1500 inh./Kmq  
Total population >50000 inh.
- High density SMT: Density >1500 inh./Kmq  
Total population >5000 and <50000 inh.
- Medium density SMT: Density > 1000 and <1500 inh/Kmq  
Total population >5000 inh.
- Low density SMT: Density <1000 inh./kmaq  
Total population >5000 inh.
- Very Small Towns: Density > 300 inh./Kmq  
Total population < 5000

Regional level: NUTS 2  
 Source: Own elaboration on EUROSTAT/LFS data  
 Origin of data: EUROSTAT/LFS data  
 Authors: F. Brandajs, A.P. Russo, D. Serrano Gimé  
 © EuroGeographics Association for administrative boundaries

## (B) Wales (UKL)



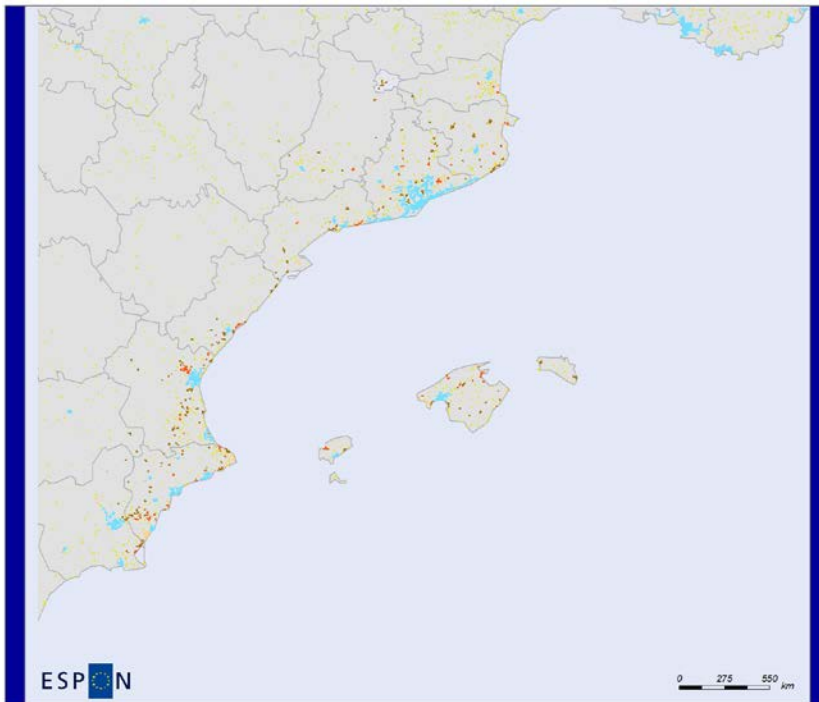
- High-density urban clusters: Density > 1500 inh./Kmq  
Total population >50000 inh.
- High density SMT: Density >1500 inh./Kmq  
Total population >5000 and <50000 inh.
- Medium density SMT: Density > 1000 and <1500 inh/Kmq  
Total population >5000 inh.
- Low density SMT: Density <1000 inh./kmaq  
Total population >5000 inh.
- Very Small Towns: Density > 300 inh./Kmq  
Total population < 5000

Regional level: NUTS 2  
 Source: Own elaboration on EUROSTAT/LFS data  
 Origin of data: EUROSTAT/LFS data  
 Authors: F. Brandajs, A.P. Russo, D. Serrano Gimé  
 © EuroGeographics Association for administrative boundaries



# TOWN Interim Report: ANNEX 3\_Town typology in case study regions

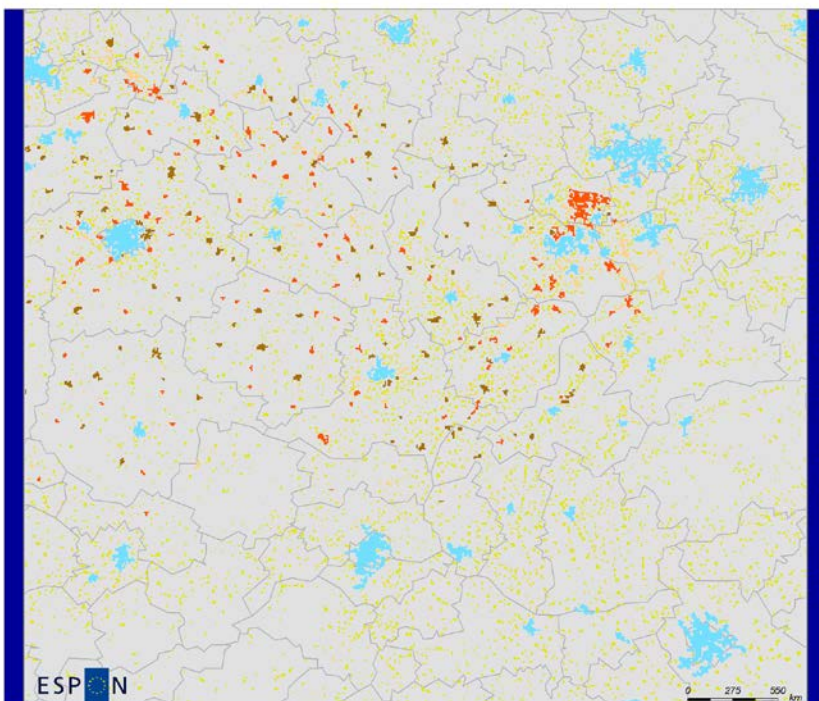
## (C) East of Spain (ES5)



- High-density urban clusters: Density > 1500 inh./Kmq  
Total population >50000 inh.
- High density SMT: Density >1500 inh./Kmq  
Total population >5000 and <50000 inh.
- Medium density SMT: Density >1000 and <1500 inh./Kmq  
Total population >5000 inh.
- Low density SMT: Density <1000 inh./kmq  
Total population >5000 inh.
- Very Small Towns: Density > 300 inh./Kmq  
Total population < 5000

Regional level: NUTS 2  
 Source: Own elaboration on EUROSTAT/LFS data  
 Origin of data: EUROSTAT/LFS data  
 Authors: F. Brandajs, A.P. Russo, D. Serrano Giné  
 © EuroGeographics Association for administrative boundaries

## (D) Czech Republic (CZ0)

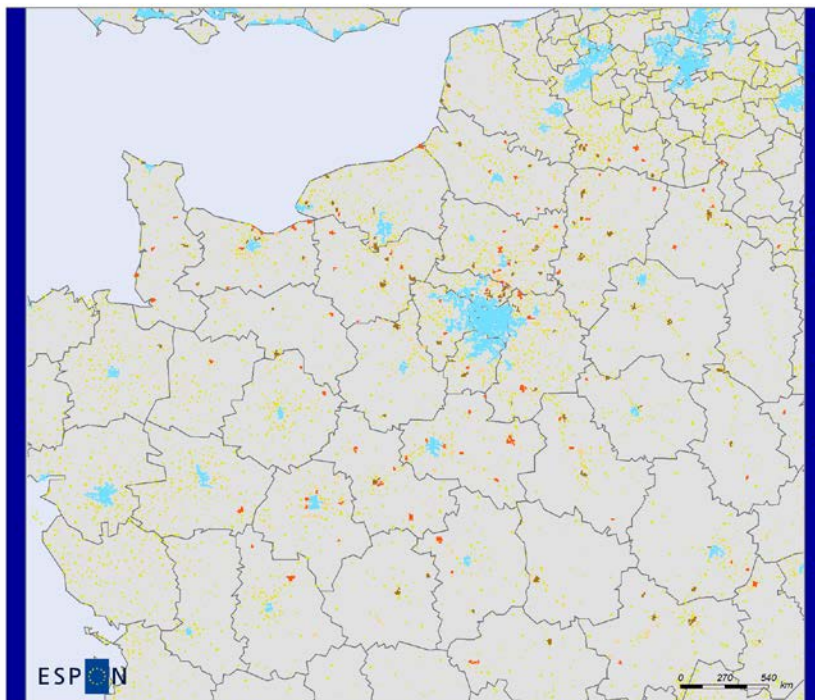


- High-density urban clusters: Density > 1500 inh./Kmq  
Total population >50000 inh.
- High density SMT: Density >1500 inh./Kmq  
Total population >5000 and <50000 inh.
- Medium density SMT: Density >1000 and <1500 inh./Kmq  
Total population >5000 inh.
- Low density SMT: Density <1000 inh./kmq  
Total population >5000 inh.
- Very Small Towns: Density > 300 inh./Kmq  
Total population < 5000

Regional level: NUTS 2  
 Source: Own elaboration on EUROSTAT/LFS data  
 Origin of data: EUROSTAT/LFS data  
 Authors: F. Brandajs, A.P. Russo, D. Serrano Giné  
 © EuroGeographics Association for administrative boundaries

# TOWN Interim Report: ANNEX 3\_Town typology in case study regions

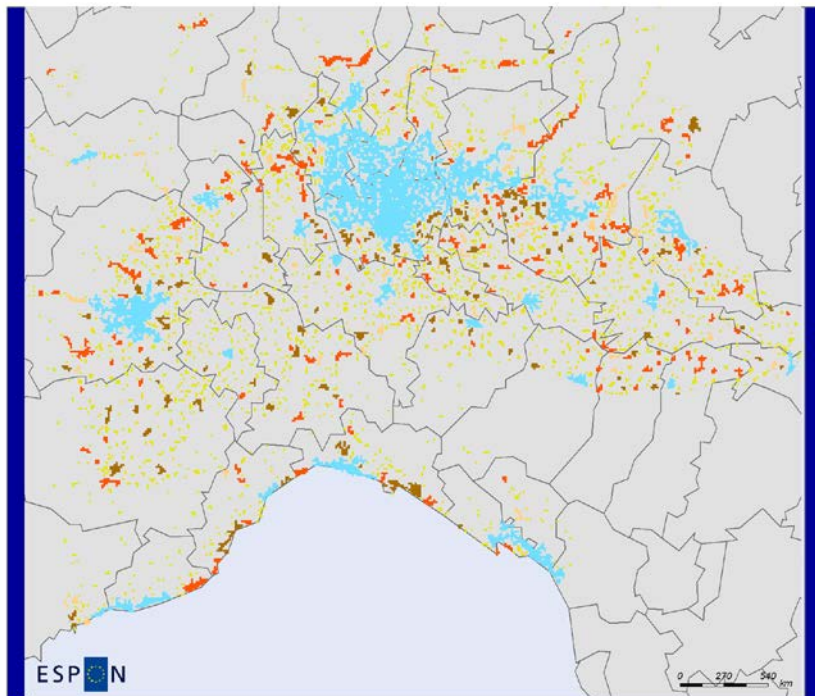
## (E) Parisian Basin incl. Île de France (FR1-2)



- High-density urban clusters: Density > 1500 inh./Kmq  
Total population >50000 inh.
- High density SMT: Density >1500 inh./Kmq  
Total population >5000 and <50000 inh.
- Medium density SMT: Density >1000 and <1500 inh/Kmq  
Total population >5000 inh.
- Low density SMT: Density <1000 inh./kmq  
Total population >5000 inh.
- Very Small Towns: Density > 300 inh./Kmq  
Total population < 5000

Regional level: NUTS 2  
 Source: Own elaboration on EUROSTAT/LFS data  
 Origin of data: EUROSTAT/LFS data  
 Authors: F. Brandajs, A.P. Russo, D. Serrano Giné  
 © EuroGeographics Association for administrative boundaries

## (F) North West Italy (ITC)



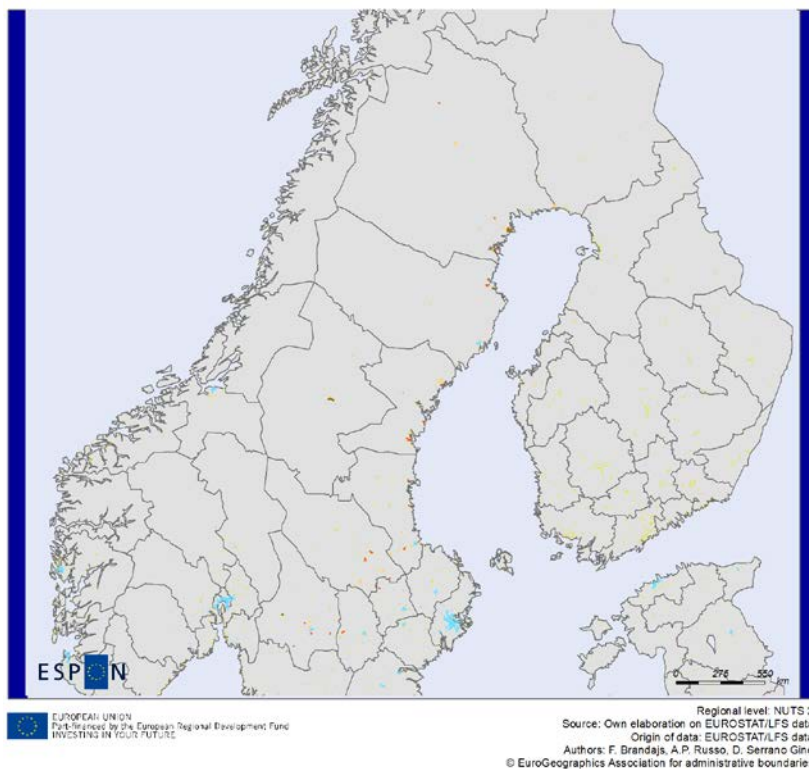
- High-density urban clusters: Density > 1500 inh./Kmq  
Total population >50000 inh.
- High density SMT: Density >1500 inh./Kmq  
Total population >5000 and <50000 inh.
- Medium density SMT: Density >1000 and <1500 inh/Kmq  
Total population >5000 inh.
- Low density SMT: Density <1000 inh./kmq  
Total population >5000 inh.
- Very Small Towns: Density > 300 inh./Kmq  
Total population < 5000

Regional level: NUTS 2  
 Source: Own elaboration on EUROSTAT/LFS data  
 Origin of data: EUROSTAT/LFS data  
 Authors: F. Brandajs, A.P. Russo, D. Serrano Giné  
 © EuroGeographics Association for administrative boundaries



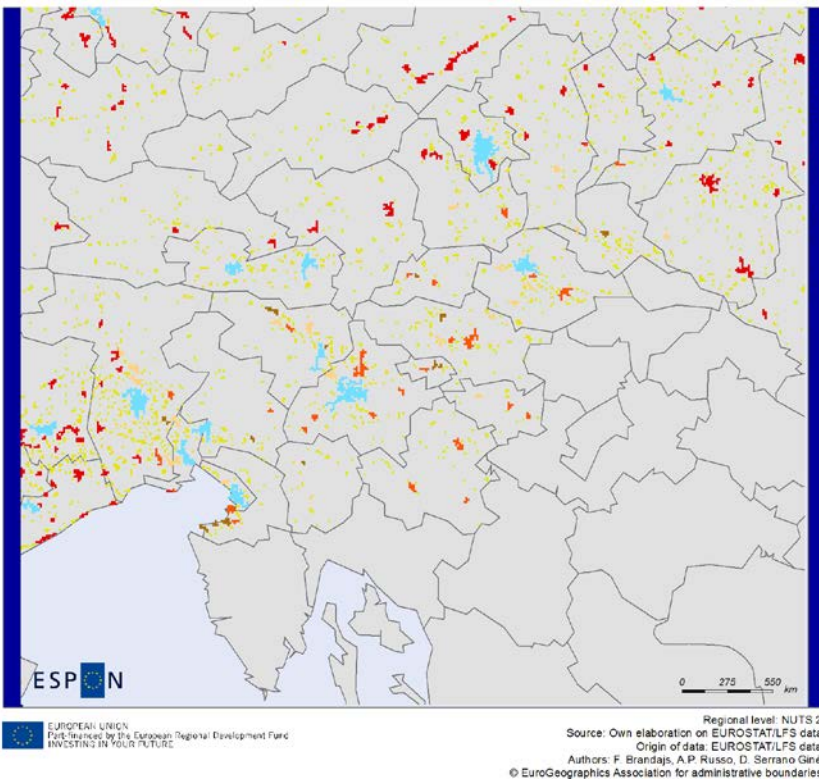
# TOWN Interim Report: ANNEX 3\_Town typology in case study regions

## (G) North Sweden (SE3)



- High-density urban clusters: Density > 1500 inh./Kmq  
Total population >50000 inh.
- High density SMT: Density >1500 inh./Kmq  
Total population >5000 and <50000 inh.
- Medium density SMT: Density >1000 and <1500 inh/Kmq  
Total population >5000 inh.
- Low density SMT: Density <1000 inh./kmq  
Total population >5000 inh.
- Very Small Towns: Density > 300 inh./Kmq  
Total population < 5000

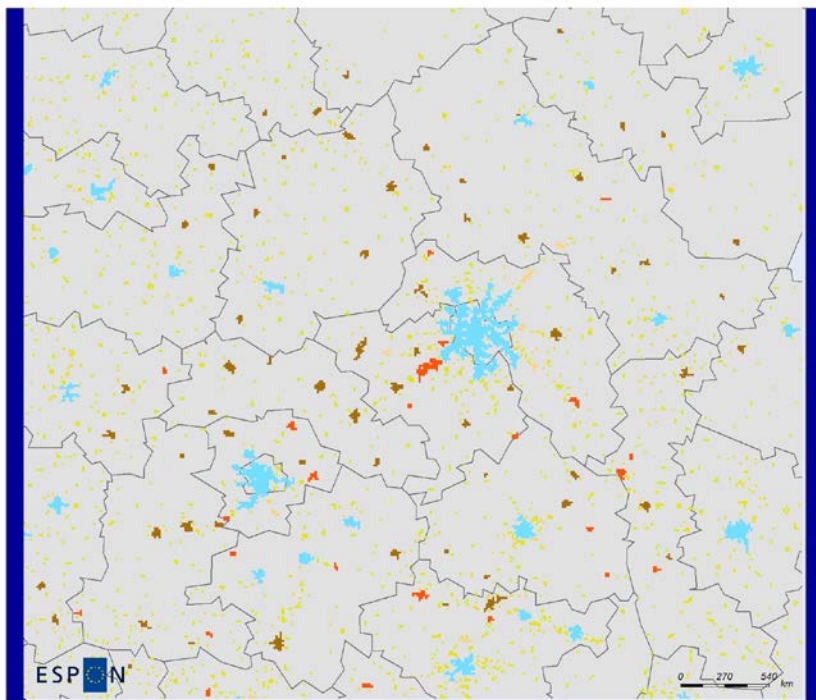
## (H) Slovenia (SI0)



- High-density urban clusters: Density > 1500 inh./Kmq  
Total population >50000 inh.
- High density SMT: Density >1500 inh./Kmq  
Total population >5000 and <50000 inh.
- Medium density SMT: Density >1000 and <1500 inh/Kmq  
Total population >5000 inh.
- Low density SMT: Density <1000 inh./kmq  
Total population >5000 inh.
- Very Small Towns: Density > 300 inh./Kmq  
Total population < 5000

# TOWN Interim Report: ANNEX 3\_Town typology in case study regions

## (I) Central Region (PL1)



- High-density urban clusters: Density > 1500 inh./Kmq  
Total population >50000 inh.
- High density SMT: Density >1500 inh./Kmq  
Total population >5000 and <50000 inh.
- Medium density SMT: Density >1000 and <1500 inh./Kmq  
Total population >5000 inh.
- Low density SMT: Density <1000 inh./kmq  
Total population >5000 inh.
- Very Small Towns: Density > 300 inh./Kmq  
Total population < 5000

ESPON  
EUROPEAN UNION  
Part-financed by the European Regional Development Fund  
INVESTING IN YOUR FUTURE

Regional level NUTS 2  
Source: Own elaboration on EUROSTAT/LFS data  
Origin of data: EUROSTAT/LFS data  
Authors: F. Brandajs, A.P. Russo, D. Serrano Giné  
© EuroGeographics Association for administrative boundaries