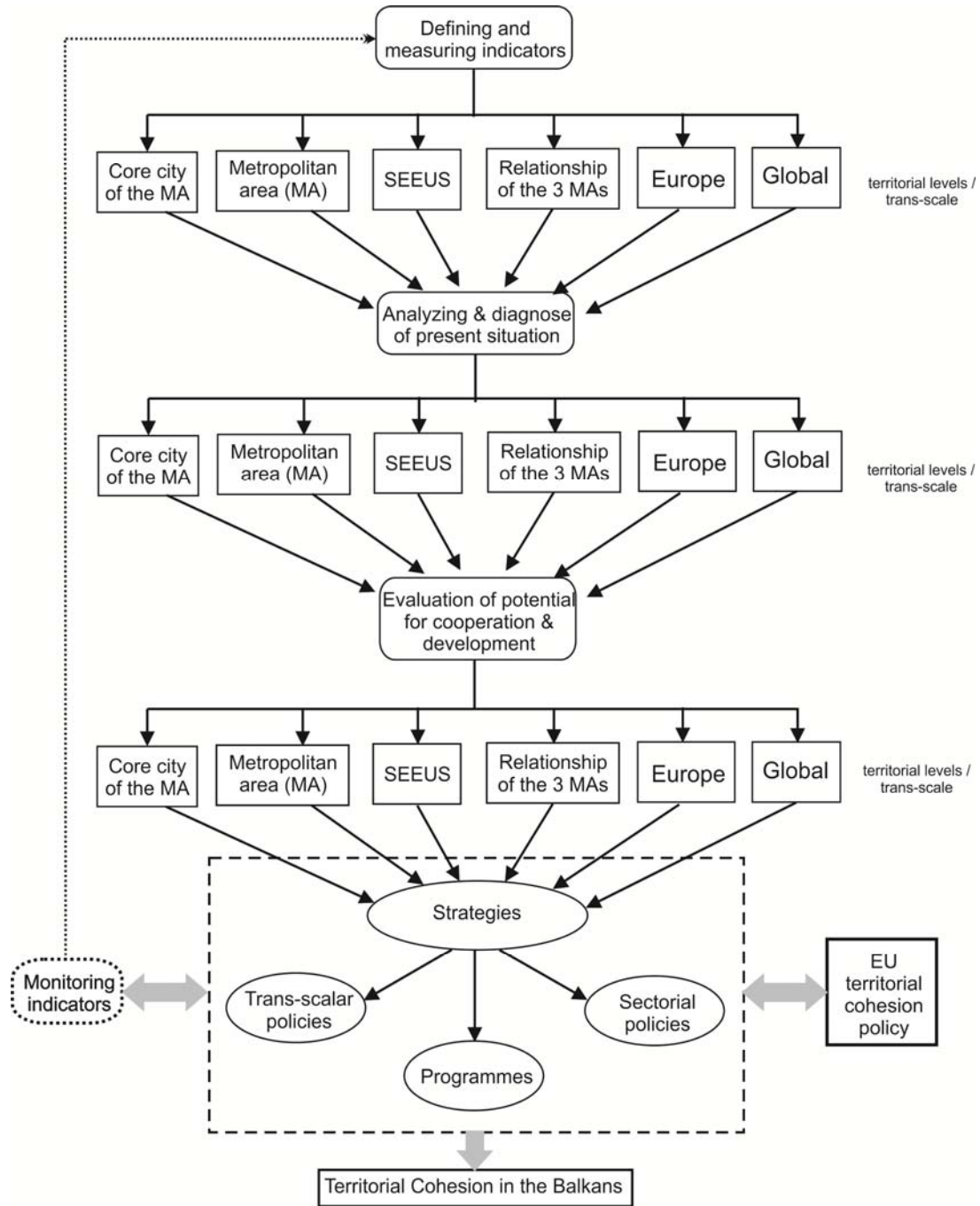


# ANNEX I

## General methodological scheme of the project



SEEUS = South-East European Urban System

## ANNEX II

### List of references

- Amiel M., Mélançon G., Rozenblat C. (2005), *Réseaux multi-niveaux: l'exemple des échanges aériens mondiaux de passagers*, <http://mappemonde.mgm.fr/>;
- Angelidis et al. (NTUA research team and experts) (2011), *Polycentric development in Europe – based on the results of ESPON FOCI project*, NTUA, Athens;
- Angelidis (sc. resp.) et al. (NTUA and UT research group) (2006), *Operational Program of Integrated Development of the Prefecture of Athens*, Research report, Prefecture of Athens (in Greek)
- Andrusz G., Harloe M., Szelenyi I. (1996), *Cities after Socialism*, New York: Blackwell Publishing;
- Attica Region (2013), *Strategic Positions and Priorities of Attica Region for the Programming Period 2014-2020*, Athens;
- Balteanu D., Grigorescu I. (2006), *The Impact of Changing Land Use upon the Environment in the Metropolitan Area of Bucharest. Preliminary Considerations*, Romanian Review of Regional Studies, 2 (1);
- Benedek J., Veress N.-C. (2013), *Economic Disparities and Changes in the Convergence of the Romanian NUTS 2 and NUTS 3 Regions*, Romanian Review of Regional Studies, 9 (1)
- Brenner, N. (2003), *Metropolitan institutional reform and the rescaling of state space in contemporary Western Europe*, European Urban and Regional Studies, 10, 297-325;
- Bogdan M., Nistor C., Simion G. (2012) *Post-socialist urban growth of Bucharest, Romania. A change detection analysis on Landsat imagery (1984 - 2010)*, Understanding Land, People and Environment: Research and Teaching Perspectives in Geography, 10-11 November 2012, Bucharest, Romania;
- Bourdeau-Lepage L. (2002) *Metropolization in an enlarged Europe*, Document de travail LEG;
- Budd L., Hirmis A. (2004) *Conceptual Framework for Regional Competitiveness*, Regional Studies, 38 (9), pp.1015-1028;
- Bundjulov, A., I. Tchalakov. (eds.). (2008), *Networks of transition. What really happened in Bulgaria after 1989*. East-West, Sofia
- Castells M. (1996), *The Information Age: Economy, society and culture: Volume 1 – The rise of the network society*, Blackwell Publishers, Massachusetts – Oxford;
- Castells M. (1999), *The Information Age: Economy, Society and Culture: Volume I - The Rise of the Network Society*, Blackwell Publishers;

- Castells M. (2003), *The Internet Galaxy: Reflections on the Internet, Business, and Society*, USA, Oxford University Press;
- CCMESI (2008), *Monitoringul integrat al suprafețelor oxigenate urbane. Studiu de caz: spațiile verzi*, CNCSIS – AT. București: Centrul de Cercetare a Mediului și Efectuare a Studiilor de Impact;
- Cepoiu A.-L. (2009), *The role of industrial activities in the development of settlements in the Metropolitan Area of Bucharest*, Universitară Publishing House, Bucharest.
- Christofakis M., Papadaskalopoulos A. (2011), *The Growth Poles Strategy in Regional Planning: The Recent Experience Of Greece, Theoretical and Empirical Researches in Urban Management*, 6 (2), pp. 5-20. <http://um.ase.ro/no62/1.pdf>;
- Consiliul Județean Ilfov, (2013), *Strategia pentru dezvoltarea județului Ilfov - "Orizont 2020"*, available at [http://www.cjilfov.ro/upload2/strategia\\_orizont/Partea\\_I\\_Planificare\\_strategica\\_30.09.2013.pdf](http://www.cjilfov.ro/upload2/strategia_orizont/Partea_I_Planificare_strategica_30.09.2013.pdf), (Accessed on 22.11.2013).
- Crampton G. (2008), *Environmental and Transport Indicators in the 'Old 15' and the 'New 12'*, Paper prepared for the Regional Studies Association international conference, University of Economics, Prague;
- Diakakis M., Foumelis M., Gouliotis L., Lekkas E. (2011), *Preliminary flood hazard and risk assessment in Western Athens metropolitan area, Advances in the Research of Aquatic Environment*, Vol. 1, Springer-Verlag, Berlin - Heidelberg;
- Doran G. T. (1981), "There's a S.M.A.R.T. way to write management's goals and objectives", *Management Review*, 70 (11), pp. 35-36, 2p;
- DG Regio (2010), *Regions 2020*;
- DG Regio (2009), *The climate change challenge for European regions*;
- EC (1999), *European Spatial Development Perspective (ESDP). Towards Balanced and Sustainable Development of the Territory of the European Union, Agreed at the Informal Council of Ministers responsible for Spatial Planning in Potsdam*;
- EC Commission staff working paper (2006), *Sustainable Urban Transport Plans, Preparatory Document in relation to the follow-up of the Thematic Strategy on the Urban Environment*, Technical Report, SEC(2006) 1432, 8.11.2007,
- EC (2007), *Green Paper - Towards a new culture for urban mobility {SEC(2007) 1209} / COM/2007/0551 final*;
- EC (2008), *Green Paper on Territorial Cohesion: Turning territorial diversity into strength*, COM ((2008)) 616 final;
- EC (2009), *Europe's Digital Competitiveness Report. Main achievements of the i2010 strategy 2005-2009*, Brussels;

EC (2009), *The climate change challenge for European regions*. Bruxelles: European Commission, Directorate General for Regional Policy;

EC (2009), *The Sixth progress report on economic and social cohesion*;

EC (2010), *Europe 2020: A European strategy for Smart, Sustainable and Inclusive Growth*, COM (2010) 2020, Brussels;

EC (2011), *Investing in Europe's future: Fifth report on economic, social and territorial cohesion*, Luxembourg, Publications Office of the European Union;

EEA (2010), *The European Environment – state and outlook 2010 - Urban Environment*

EEA (2012), *Corine Land Cover (CLC) 2000 and 2006 by country*;

ESPON 2006 Programme (2002) Project 1.1.4, *Spatial effects of demographic trends and migration*, Final Report;

ESPON 2006 Programme (2003) Project 3.1, *Integrated tools for European Spatial Development*, Interim Report;

ESPON 2006 Programme (2004) Project 1.2.1, *Transport services and networks: territorial trends and basic supply of infrastructure for territorial cohesion*, Project Report;

ESPON 2006 Programme (2004) Project 2.4.2, *Integrated analysis of transnational and national territories based on ESPON results*, First Interim Report;

ESPON 2006 Programme (2005) Project 1.1.1, *Potentials for polycentric development in Europe*, Final Report;

ESPON 2006 Programme (2005) Project 1.1.3, *Enlargement of the European Union and the wider European Perspective as Regards its Polycentric Spatial Structure*, Final Report;

ESPON 2006 Programme (2006) Project 1.1.2, *Urban-rural relations in Europe*, Final Report

ESPON 2006 Programme (2006) Project 1.4.1, *The role of small and medium sized towns*, Final Report

ESPON 2006 Programme (2006) Project 4.1.3, *Feasibility study on monitoring territorial development based on ESPON key indicators*, Interim Report;

ESPON 2006 Programme (2007) Project 1.4.3, *Study on Urban Functions*, Final Report;

ESPON 2013 Programme (2008) *Territorial Dynamics in Europe. Trends in Population Development*, Territorial Observation No. 1/November 2008.

ESPON 2013 Programme (2010), ATTREG Project, *Attractiveness of Europeans Regions and Cities for residents and visitors*, Inception Report.

ESPON 2013 Programme (2010) DEMIFER Project, *Demographic and Migratory Flows Affecting European Regions and Cities*, Final Report;

ESPON 2013 Programme (2010) ESPON 2013 Database 1 Project, Final Report;

ESPON 2013 Programme (2010) ESPON 2013 Database 1 Project, Draft Final Report;

ESPON 2013 Programme (2010) FOCI Project, *Future Orientations for Cities*, Final Report;

ESPON 2013 Programme (2010) METROBORDER Project, *Cross-border Polycentric Metropolitan Regions*, Final Report;

ESPON 2013 Programme (2010) ReRisk Project, *Regions at Risk of Energy Poverty*, Final Report;

ESPON 2013 Programme (2010) TEDI Project, *Territorial Diversity in Europe*, Final Report;

ESPON 2013 Programme (2010) TIPTAP, *Territorial Impact Package for Transport and Agricultural Policies*, Final Report;

ESPON 2013 Programme (2011) BEST METROPOLISES Project, *Best Development Conditions in European Metropolises: Paris, Berlin and Warsaw*, Inception Report;

ESPON 2013 Programme (2011) CLIMAT Project, *Climate Change and Territorial Effects on Regions and Local Economies in Europe*, Final Report;

ESPON 2013 Programme (2011) GEOSPECS Project, *Geographic specificities and Development Potentials in Europe, European Perspective on Specific Types of Territories*, Interim Report;

ESPON 2013 Programme (2011) SIESTA, *Spatial indicators for a Europe 2020 Strategy Territorial Analysis*, Inception Report;

ESPON 2013 Programme, (2011), TERCO / European Territorial Cooperation as a Factor of Growth, Jobs and Quality of Life, Inception Report and Interim Report;

ESPON 2013 Programme (2011), TRACC Project, *Transport accessibility at regional / local scale and patterns in Europe*, Interim Report;

ESPON 2013 Programme, (2012) SIESTA Project, *Spatial indicators for a Europe 2020 Strategy Territorial Analysis*, Final Report;

ESPON 2013 Programme (2012) ECR2, *Economic Crisis: Resilience of Regions*, Inception Report;

ESPON 2013 Programme (2012) INTERCO Project, *Indicators of Territorial Cohesion*, Final Report;

ESPON 2013 Programme (2012) KIT Project, *Knowledge, Innovation, Technology*, Draft Final Report;

ESPON 2013 Programme (2012) SGPTD, *Second Tier Cities in Territorial Development in Europe: Performance, Policies and Prospects*, Draft Final Report;

ESPON 2013 Programme (2012) POLYCE, *Metropolisation and Polycentric Development in Central Europe: Evidence Based Strategic Options*, Final Report

ESPON 2013 Programme (2013) ULYSSES Project, *Using applied results from ESPON as an yardstick for cross-border spatial development planning*, Draft Final Report;

ESPON 2013 Programme (2013) ESPON 2013 Database 2 Project;

- European Union (2007), *Treaty of Lisbon: Amending the Treaty on European Union and the Treaty establishing the European Community*, signed at Lisbon, 13 December 2007;
- European Union (2007), *Leipzig Charter on Sustainable European Cities*, Agreed on the occasion of the Informal Ministerial Meeting in Leipzig on 24 / 25 May 2007;
- European Union (2010), *URBACT Cities facing the crisis: impact and responses* (results of the respective specific survey);
- European Union (2011), *Territorial Agenda of the European Union 2020, Towards an Inclusive, Smart and Sustainable Europe of Diverse Regions*, Agreed on the Occasion of the Informal Ministerial Meeting in Gödöllő, Hungary on 19 May 2011;
- European Union (2011), *Demography Report 2010. Older, more numerous and diverse Europeans*, Commission Staff Working Document;
- European Environment Agency (EEA) (2012), *Climate change, impacts and vulnerability in Europe 2012 An indicator based report*, 12, ISSN 1725-9177.
- Gabi S., Thierstein A., Kruse C., Glanzmann L. (2005), *Sustainable Management of the polycentric European Metropolitan Region of Northern Switzerland*, Raumentwicklung;
- Gardiner B., Martin R. (2004), *Regional Competitiveness and Productivity across the European Union*, Regional Studies, 39 (9), p.1045-1067;
- Gordon D. (2007) *North-South Interface RINA*, Helsinki City Planning Department Strategic Urban Planning Division, Report 2007;
- Harvey D. (1989) *The Condition of Postmodernity*, Blackwell, Cambridge, Oxford;
- Haidndl G., Hirschler P. (2008), *Metropolitan development and strategic positioning - Planning Efforts in selected cities on different levels*, REAL CORP 008 Proceedings / Tagungsband, Vienna;
- Hall P., Pain K. (2006), *The Polycentric Metropolis - Learning from Mega-City Regions in Europe*, London: Earthscan Publications Ltd;
- Hallgeir A. (2004), *Spatial policies in the European Union*, EuroFutures, Stockholm;
- Hoornweg S., Trejos G. (2011), *Cities and greenhouse gas emissions: moving forward*, *Environment and Urbanization*, Vol. 23(1) April, pages 211-213;
- Ianoş I. (2002), *The maturing of the Romanian Urban System*, in International handbook of urban systems: Studies of urbanization and migration in Advanced and Developing Countries, (ed. H.S.Geyer), Edward Elgar, Cheltenham, p.295-327;
- Ianoş I., Pintilii R.D., Peptenatu D., Draghici C. (2012), *About sustainable development of the territorial emergent structures from the metropolitan area of Bucharest*, Engineering and Environmental Management Journal, 11 (9), 1535-1545;
- Ilieva Margarita, Iliev Iliya (2010), *Bulgarian Urban Settlements in the Early 21st Century*, Bulletin of Geography, Socio-Economic Series, 13/2010, pp. 113-126. [http://www.bulletinofgeography.umk.pl/13\\_2010/09\\_ilieva.pdf](http://www.bulletinofgeography.umk.pl/13_2010/09_ilieva.pdf);

INTERREG IVC “Regions for sustainable change”

- Ioja I. C. (2008), *Metode și tehnici de evaluare a calității mediului în aria metropolitană a municipiului București*, București: Editura Universității din București;
- Ioja I. C., Pătroescu M., Matache M. L., Pavelescu G., Damian R. (2007), *Environmental impact assessment of the vegetable cultivations using the Pimentel-Euleistein model Case study Argeș Lower Watershed*, in V. Pleșu & P. Șerban (Eds.), *Computer Aided Process Engineering*, 24, pp. 1247-1252, Elsevier Press;
- Ioja I. C., Pătroescu M., Niță M. R., Rozyłowicz L., Ioja A. D., Onose D. A. (2010), *Categories of residential spaces after their accessibility to urban parks – indicator of sustainability in human settlements*, *Wseas Transactions on Environment and Development*, 5 (6), pp. 307-314.
- Ioja I. C., Rozyłowicz L., Pătroescu M., Niță M. R., Vânău, G. O. (2011), *Dog walkers' vs. other park visitors' perceptions: The importance of planning sustainable urban parks in Bucharest, Romania*. *Landscape and Urban Planning*, 103 (1), pp. 74-82.
- Mandrescu N., Radulian M., Marmureanu Gh. (2007), *Geological, geophysical and seismological criteria for local response evaluation in Bucharest urban area*, *Soil Dynamics and Earthquake Engineering*, 27 (4), pp. 367-393. doi: 10.1016/j.soildyn.2006.06.010;
- Meijers E. (2009), *Synergy in Polycentric urban Regions: complementarity, organising capacity and critical mass (Ph. D. Thesis)*, Delft Centre for Sustainable Urban Areas, Delft;
- Meijers E. (2006), *The notion of complementarity in urban networks: definition, value, measurement and development*, paper presented at the 10th UNECE Conference on Urban and Regional Research, May 22-23 2006, Bratislava;
- Meyer P. J. (2003), *Attitude is everything: If you want to succeed above and beyond*, Waco, Texas: The Meyer Resource Group;
- Milakis D. (2006), *Land use and transport: investigation of the effects of the characteristics of urban form at macro and micro- level to the travel choices*, School of Surveyors NTUA (in Greek), Ph.D. dissertation
- Mionel V., Mionel O. (2012) *Changing the Paradigm of Living in Bucharest: The Economic Segregation of the Urban Privileged*, *Theoretical and Empirical Researches in Urban Management*, 7 (4);
- Moulaert F., Rodriguez A., Swyngedouw, E. (Eds.) (2003), *The Globalized City: Economic Restructuring and Social Polarization in European Cities*. Oxford: Oxford University Press.
- Moulaert F., Salin E., Werquin, T. (2001), ‘*Euralille. Large-scale Urban Development and Social Polarization*’, *European Urban and Regional Studies* 8: 145–60;

- Nae M., Turnock D. (2011), *The new Bucharest: Two decades of restructuring*, Cities, 28, pp. 206-219.
- Nica-Guran L. (2009), *Investitiile straine directe in Romania (Foregin direct investments in Romania)*, Romanian, Editura Tehnica, Bucuresti;
- Otgaar A., Van Den Ber L., Van Der Meer J. (2008), *Empowering metropolitan regions through new forms of cooperation*, Ashgate Publ;
- Paddison R. (2001), *Handbook of Urban Studies*, SAGE Publications, London;
- Pătroescu M., Iojă I. C., Necşuliu R., Brăilescu C. (2004), *The quality of oxygenating surfaces. The green areas of Bucharest. A case studies*. Revue Roumaine de Geographie, 48 (1), pp. 205-216;
- Pătroescu M., Vânău G., Niţă M. R., Iojă C., Iojă A. (2011); *Land Use Change in the Bucharest Metropolitan Area and its Impacts on the Quality of the Environment in Residential Developments*, Forum geografic. Studii și cercetări de geografie și protecția mediului, 10 (1), pp. 177-186
- Pavleas S., Petrakos G. (2005), *The Urban System of Southeastern Europe: Evolution, Structure and Hierarchy, 18th European Advanced Studies*. Institute in Regional Science, [http://www.wz.uni.lodz.pl/ersa/abstr/pavleas\\_p.pdf](http://www.wz.uni.lodz.pl/ersa/abstr/pavleas_p.pdf);
- Peptenatu D., Pintilii R., Cepoiu L., Draghici C. (2009), *Polycentric Development Strategy – An Instrument in Administrative Decentralization*, Romanian Review on Political Geography, 11th year, no. 2, p. 85-97, ISSN: 1454-2749, E-ISSN: 2065-1619;
- Petrakos G., Pavleas S., Anagnostou A. (2005), *The Greek Urban System: Concentration or Deconcentration and Estimation of Metropolitan Concentration*, Discussion Paper Series, 11(14): 255-280. [http://www.prd.uth.gr/uploads/discussion\\_papers/2005/uth-prd-dp-2005-14\\_en.pdf](http://www.prd.uth.gr/uploads/discussion_papers/2005/uth-prd-dp-2005-14_en.pdf);
- Petsimeris P. (2002), *Population deconcentration in Italy, Spain and Greece: A first comparison*, EKISTIKS, the problems and science of human settlements, Defining success of the city in the 21st century, Vol: 69;
- Pintilii R.-D. (2008), *Turismul și rolul său în dezvoltarea integrată a zonei de influență a municipiului București*, Editura Universitară, ISBN 978-973-749-597-6.
- Prevelakis G. (2002), *Metropolitan Planning in Greece: the case of Athens*, Aeihoros, Issue 1, Department of Urban and Regional Planning, University of Thessaly, Volos.;
- Porter M. (1998), *The Competitive Advantage of Nations*, Free Press, New York;
- PwC Big Cities Network (2005), *Cities of the future: global competition, local leadership*, Pricewaterhouse Coopers;
- Rey V., Groza O., Ianoș I., Pătroescu M. (2007), *Atlas de la Roumanie*, Montpellier, Paris: Reclus;



- Rodrigue J., Comtois C., Slack B. (2006), *The Geography of Transport Systems*. Routledge, New York;
- Rozenblat C., Pumain D. (2004), *Articulated modes of integration: the structuring of the european urban system* in M. Pacione: *Changing cities: international perspectives*, IGU Urban Commission and Strathclyde University Publishing, pp.91-105;
- Rozenblat C., Pumain D. (2007), *Firm linkages, innovation and the evolution of urban systems* in Taylor et al. (eds), *Cities in Globalization: Practices, policies and theories*, Routledge, pp.130-156;
- Sassen S. (2002), *Global networks, linked cities*, Routledge, New York – London;
- Simion G. (2012), *Urban Sprawl and Agricultural Land Use Change in the Bucharest Metropolitan Area*, IAMO Forum 2012, Land Use in Transition: Potentials and Solutions between Abandonment and Land Grabbing, 20-22 June 2012, Halle, Germany;
- Taylor P. J. (2003), *European Cities in the World Network*, in Dijk, H. van (ed) *The European Metropolis 1920–2000*, Rotterdam: Erasmus Universiteit;
- Trullén J., Boix R. (2003), *Barcelona, policentric metropolis and network of cities*, REAL CORP 008, Viena;
- Vanolo A. (2008), *The Image of the Creative City: Some Reflections on Urban Branding in Turin*. *Cities*, 25 (6), pp.370-382.
- Wickham J., Lohan M. (1999), *Scenarios for a sustainable society: car transport systems and the sociology of embedded technologies*, PROJECT SCENESUSTECH / *The Social Shaping of European Urban Car Systems*, Employment Research Centre, Trinity College, Dublin;
- \*\*\*Athens Urban Transport Organisation (AUTO), Annual Reports 2006 – 2012, Athens;
- \*\*\*CEMAT - Guiding Principles for Sustainable Spatial Development (2000).
- \*\*\*CUGUAT-TIGRIS (2007), <http://mdrt.ro/dezvoltare-teritoriala/atlas-teritorial-on-line>
- \*\*\*Draft partnership agreement of the Republic of Bulgaria with the European commission for funding from the European structural investment funds 2014-2020, update 21.08.2013.
- \*\*\*EHEMU Country Reports (2010), *Health Expectancy in Romania*, Issue 3 – March, [http://www.eurohex.eu/pdf/CountryReports\\_Issue3/Romania\\_Issue%203.pdf](http://www.eurohex.eu/pdf/CountryReports_Issue3/Romania_Issue%203.pdf) (Accessed on 20 December 2012);
- \*\*\*ELSTAT (Hellenic Statistical Authority) data – different years
- \*\*\*\*Eurostat regional yearbook, 2013
- \*\*\* Flash Eurobarometer “Perception survey on quality of life in European cities”, 2010
- \*\*\* Institutul National de Statistica of Romania (INSRO) Constitution of Romania, Title I, article 3, INSR (2012)a;
- \*\*\*INSRO, Romanian Statistical Yearbook, (2012)b;

- \*\*\* Integrated plan for urban regeneration and development of Sofia 2014-2020
- \*\*\*Efficient Metropolitan Governance Functioning Urban-Rural Relations (2011)  
[http://www.eurometrex.org/Docs/Activities/EP\\_Event/EN\\_METREX\\_URBAN\\_EP\\_report.pdf](http://www.eurometrex.org/Docs/Activities/EP_Event/EN_METREX_URBAN_EP_report.pdf)
- \*\*\* JRC, EFGS, REGIO-GIS (2010), GMES Promote project
- \*\*\*Master plan of Sofia
- \*\*\*Master plan for traffic management, Sofia
- \*\*\*Ministry of Agriculture and Rural Development – Management Authority for NPRD, platform LEADER (<http://leader-romania.ro/index.php>)
- \*\*\*Ministry of Regional Development and Public Works, Bulgaria;
- \*\*\*Municipal plan for the development of Sofia 2007-2013
- \*\*\*Municipal strategy for the implementation of the decade of Roma inclusion 2007-2013
- \*\*\*National Institute of Statistics, Statistical Yearbook 2010
- \*\*\*National Regional Development Strategy of the Republic of Bulgaria for the period 2005-2015
- \*\*\*National strategy for regional development of Bulgaria 2012 – 2022
- \*\*\*National concept for spatial development of Bulgaria 2013-2025
- \*\*\*National strategy for demographic development of Bulgaria 2012-2030
- \*\*\*National Development Plan 2007-2013 (Romania)
- \*\*\*National Territorial Plan (PATN-Romania)
- \*\*\*NTUA School of Rural & Surveying Engineering, Centre of the Assessment of Natural Hazards and Proactive Planning, (2006), *Developing a Decision Support System for the Management of Natural and Man-Made Hazards in the Eastern Attica Prefecture, An Initial [Spatial] Inventory*, SI.PRO.CI – INTERREG IIIC, Athens;
- \*\*\*OECD-JRC, (2008), Handbook on Constructing Composite Indicators: Methodology and user guide, OECD Publishing;
- \*\*\*Operational programme “Transport” 2014-2020, draft update 20.08.2013
- \*\*\*PATJ Ilfov, 2004.
- \*\*\* Planul de Amenajare Teritoriala a Judetului Ilfov (2004).
- \*\*\*Regional plan for development of Yugozapaden region 2014-2020
- \*\*\*Smart cities - Ranking of European medium-sized cities Project, Final Report (2007), ([http://www.smart-cities.eu/download/smart\\_cities\\_final\\_report.pdf](http://www.smart-cities.eu/download/smart_cities_final_report.pdf))
- \*\*\*Strategic Concept for Territorial Development – Romania 2030 (2006) INCD Urbanproiect,
- \*\*\*Strategic Concept for Bucharest 2035 (2011-2012).
- \*\*\*Strategy for the prevention of social exclusion in Sofia city 2011 -2015
- \*\*\*The Global Innovation Index 2013: The Local Dynamics of Innovation

www.bucharestairports.ro, Annual Report, 2011

[http://www.mdpl.ro/\\_documente/dezvoltare\\_teritoriala/amenajarea\\_teritoriului/patj\\_ilfov2/Memoriu%20Etapa%20II.pdf](http://www.mdpl.ro/_documente/dezvoltare_teritoriala/amenajarea_teritoriului/patj_ilfov2/Memoriu%20Etapa%20II.pdf)

[www.ratb.ro/statistici.php](http://www.ratb.ro/statistici.php)

[www.metrorex.ro](http://www.metrorex.ro)

[www.autogari.ro](http://www.autogari.ro)

<http://epp.eurostat.ec.europa.eu/portal/page/portal/eurostat/home/> accessed on 06.01.2013.

[www.ploiesti.ro/ADI/index.php](http://www.ploiesti.ro/ADI/index.php)

# ANNEX III – List of GROSEE Indicators

## 1. Competitiveness

| Sub-themes       | Headline indicators                     | Indicator   | Source of indicator | 5th Coh. Rep.* | Source of data           | Europe 2020 target |
|------------------|---|---|---------------------|----------------|--------------------------|--------------------|
| GDP, FDI, Income | Headline                                | GDP per capita in PPS   | INTERCO             |                | Eurostat                 |                    |
|                  |   | GDP, in PPS per inhabitant, in percentage of the EU average   | Eurostat            |                | Eurostat                 |                    |
|                  |   | GDP in Euros, per capita                                      | Eurostat            |                | Eurostat                 |                    |
|                  |   | GDP, in Euros, in percentage of the EU average per inhabitant | Eurostat            |                | Eurostat                 |                    |
|                  | Headline                                | Dispersion of regional GDP per inhabitant                     | Eurostat            |                | Eurostat                 |                    |
|                  |   | Gross Value Added (GVA)                                       | Eurostat            |                | Eurostat                 |                    |
|                  |   | Real growth rate of regional Gross Value Added (GVA)          | Eurostat            |                | Eurostat                 |                    |
|                  |   | Turnover for enterprises by activity sectors                  | Eurostat            |                | National data - Eurostat |                    |
|                  |   | Gross Fixed Capital Formation                                 | Eurostat            |                | Eurostat                 |                    |
|                  | Headline                                | FDI / Foreign direct investments (per inhabitant)             | INTERCO             |                | Eurostat                 |                    |
|                  | Headline                                | Income / Disposable household income                          | Eurostat            |                | Eurostat                 |                    |
|                  |   | Tourism intensity   | Eurostat            |                | Eurostat                 |                    |
|                  |   | Arrivals in tourist accommodation establishments              | Eurostat            |                | Eurostat                 |                    |
|                  |   | Number of establishments, bedrooms and bed-places             | Eurostat            |                | Eurostat                 |                    |
|                  | Labour market, employment, unemployment |   | Total employment    | Eurostat       |                          | Eurostat           |
|                  |   | Total employment rates by sex and age (%)                     |                     |                | Eurostat                 |                    |

| Sub-themes | Headline indicators                  | Indicator   | Source of indicator                                   | 5th Coh. Rep.*                  | Source of data         | Europe 2020 target                                  |
|------------|--------------------------------------|---|---|---------------------------------|------------------------|---|
|            | Headline                             | Employment rate by sex, age group 20-64   | Eurostat / Europe 2020 headline                       |                                 | Eurostat / Europe 2020 | 75% of the population aged 20-64 should be employed |
|            |                                      | Balance between female and male employment  |   |                                 | Eurostat               |   |
|            |                                      | Employed persons in all NACE  | Eurostat  |                                 | Eurostat               |   |
|            |                                      | Employment by economic activity   | Eurostat  |                                 | Eurostat               |   |
|            | Headline                             | Unemployment rates per sex and age (%)  | INTERCO (Top ind.)                                    |                                 | Eurostat               |   |
|            |                                      | Development of unemployment rate (male, female, young, total, 99-04)  | INTERCO   |                                 | Eurostat               |   |
|            | Headline                             | Labour productivity in industry and services  | INTERCO (Top ind.)                                    |                                 | Eurostat               |   |
|            |                                      | Productivity growth within sectors - Increase in average productivity due to higher productivity within sectors | Eurostat  | +                               | Eurostat               |   |
|            |                                      | Productivity growth through employment shifts between sectors   | Eurostat  | +                               | Eurostat               |   |
|            | Technological readiness & Innovation | Headline  | Persons aged 30-34 with tertiary education attainment | Eurostat / Europe 2020 headline |                        | Eurostat / Europe 2020                              |
| Headline   |                                      | Total expenditure on R&D - % of regional GDP  | Eurostat / Europe 2020 headline                       |                                 | Eurostat / Europe 2020 | 3% of expenditure on research and development       |
|            |                                      | Total intramural R&D expenditure (GERD)   | INTERCO (Top ind.)                                    |                                 | Eurostat               |   |
|            |                                      | Human Resources in Science & Technology   | Eurostat  |                                 | Eurostat               |   |
|            |                                      | Employment in technology and knowledge-intensive sectors  | Eurostat  |                                 | Eurostat               |   |

| Sub-themes      | Headline indicators | Indicator   | Source of indicator    | 5th Coh. Rep.* | Source of data | Europe 2020 target                                    |
|-----------------|---------------------|---|------------------------|----------------|----------------|---|
|                 | Headline            | Households with broadband access (% of the entire population) | Eurostat / Europe 2020 |                | Eurostat       |   |
|                 | Headline            | Households with access to the Internet at home                | POLYCE                 |                | Eurostat       |   |
| Human potential | Headline            | Share of early school leavers                                 | Europe 2020 headline   |                |                | The share of early school leavers should be under 10% |

## 2. Demography, social structure and well-being

| Sub-themes | Headline indicators | Indicator                                     | Source of indicator | 5th Coh. Rep.* | Source of data | Europe 2020 target |
|------------|---------------------|---|---------------------|----------------|----------------|--------------------|
| Demography |                     | Annual average population by sex              | Eurostat            |                | Eurostat       |                    |
|            |                     | Population by sex and age groups on 1 January | Eurostat            |                | Eurostat       |                    |
|            |                     | Gender imbalances                             | INTERCO (Top ind.)  |                | Eurostat       |                    |
|            |                     | Ageing index (persons 65+ / persons 0-14)     | INTERCO             |                | Eurostat       |                    |
|            | Headline            | Old age dependency ratio                      | INTERCO (Top ind.)  |                | Eurostat       |                    |
|            |                     | Young age dependency ratio                    |                     |                |                |                    |
|            |                     | Total dependency rate                         |                     |                |                |                    |
|            |                     | Fertility rate (total and by age)             | Eurostat            |                | Eurostat       |                    |
|            | Headline            | Life expectancy at birth                      | INTERCO (Top ind.)  |                | Eurostat       |                    |
|            |                     | Average number of children per women          |                     |                |                |                    |
|            |                     | Number of illegally entered migrants          |                     |                |                |                    |
|            | Headline            | Net migration rate                            | INTERCO (Top ind.)  |                | Eurostat       |                    |
|            |                     | Population density                            | INTERCO / Eurostat  |                | Eurostat       |                    |

| Sub-themes                                | Headline indicators | Indicator   | Source of indicator  | 5th Coh. Rep.* | Source of data | Europe 2020 target  |
|---|---------------------|---|----------------------|----------------|----------------|---|
| Social structure & well being             | Headline            | At persistent risk of Poverty rate (population share with 60% of the national equivalent medium income) | Europe 2020 headline |                | Eurostat       | Reducing the number of people at risk of poverty or exclusion by 20 million in the EU |
| Provision of services of general interest |                     | Number of doctors by 10.000 inhabitants   |                      |                |                |   |

### 3. Accessibility and connectivity

| Sub-themes  | Headline indicators | Indicator   | Source of indicator                              | 5th Coh. Rep.* | Source of data | Europe 2020 target |   |
|---|---------------------|---|--|----------------|----------------|--------------------|---|
| Transport flows / traffic, infrastructure, capacity | Headline            | Airflights number   |  |                | Eurostat       |                    |   |
|   | Headline            | Existing Connections – number of trains                     | ESPO 1.1.1.                                      |                |                |                    |   |
|   | Headline            | Length of motorways   | Eurostat   |                | Eurostat       |                    |   |
|   |                     | Length of railway network, km                               |  |                | Eurostat       |                    |   |
|   |                     | Length of road network (km)                                 |  |                |                |                    |   |
|   |                     | Number of commercial airports                               |  |                |                |                    |   |
|   |                     | Total length of motorways                                   | ESPO Project 1.2.1                               |                |                |                    |   |
|   |                     | Traffic in commercial airports (in million passengers/year) |  |                |                |                    |   |
|   |                     | Air transport of passengers                                 |  |                | Eurostat       |                    |   |
|   |                     | Air transport of freight*                                   |  |                | Eurostat       |                    |   |
|   |                     | Airports accessibility                                      | FOCI   |                |                |                    |   |
|   |                     | Air transport flows   |  |                |                |                    |   |
|   |                     | Contactability through one trip day                         | FOCI   |                |                |                    |   |
|   |                     | Existing Connections – number of trains – number of flights | ESPO 1.1.1.                                      |                |                |                    |   |
|   |                     | Connectivity – daily links                                  |  |                |                |                    |   |
|   |                     | Motorisation rate   |  |                |                |                    |   |
|   |                     | Headline  | Number of deaths in road accidents (road safety) | Europe 2020    |                |                    | 33.8 fatalities per 1 million inhabitants |
|   |                     |   | Fleet of vehicles of public transport            |                |                |                    |   |

| Sub-themes                | Headline indicators | Indicator  | Source of indicator | 5th Coh. Rep.* | Source of data | Europe 2020 target |
|---------------------------|---------------------|--|---------------------|----------------|----------------|--------------------|
|                           |                     | Public transport passenger movements   |                     |                |                |                    |
|                           |                     | Index of satisfaction with public transport in 2009                          |                     |                |                |                    |
|                           |                     | Share of passenger trips by public transport in the total of passenger trips |                     |                |                |                    |
| Accessibility to services |                     | Access to industrial zones   |                     |                |                |                    |
|                           |                     | Access to grocery services   |                     |                |                |                    |
|                           |                     | Access to hospitals  | INTERCO             |                |                |                    |
|                           |                     | Access to universities   | INTERCO             |                |                |                    |
| Urban Transport           |                     | Speed  |                     |                |                |                    |

#### 4. Environment

| Sub-themes   | Headline indicators | Indicator   | Similar indicator from Eurostat   | Source of indicator | 5th Coh. Rep.* | Source of data | Europe 2020 target |
|--------------|---------------------|---|---|---------------------|----------------|----------------|--------------------|
| Water, waste |                     | Consumption of water per capita   |   | INTERCO             |                |                |                    |
|              |                     | Percentage of treated wastewater  |   |                     |                |                |                    |
|              |                     | Annual wastes amount  | Generation and treatment of municipal waste (1 000 t) by NUTS 2 regions | Eurostat            |                | Eurostat       |                    |
|              | Headline            | Percentage of resident population connected to wastewaters collection and treatment systems |   | Europe 2020         |                |                |                    |
|              |                     | Share of population with access to sewage   |   |                     |                |                |                    |
|              |                     | Share of waste recycling  |   |                     |                |                |                    |
|              |                     | Rate of production of household waste   |   |                     |                |                |                    |
|              |                     | Total waste amount  |   |                     |                |                |                    |
|              | Headline            | Solid waste   |   |                     |                |                |                    |



| Sub-themes                                    | Headline indicators | Indicator  | Similar indicator from Eurostat                       | Source of indicator | 5th Coh. Rep.* | Source of data       | Europe 2020 target |
|---|---------------------|--|---|---------------------|----------------|----------------------|--------------------|
|   |                     | collected per inhabitant   |   |                     |                |                      |                    |
| Land use, Environment quality, natural assets |                     | Land cover/land use  |   | INTERCO             |                | Eurostat / CORINE LC |                    |
|   |                     | Agricultural areas   | Areas harvested, yields, production by NUTS 2 regions |                     |                | CORINE LC            |                    |
|   |                     | Surface of landfills   |   |                     |                | CORINE LC            |                    |
|   |                     | Percentage of green areas of total urban areas   |   |                     |                |                      |                    |
| Protected areas                               | Headline            | NATURA 2000 area   |   | INTERCO             |                | Eurostat             |                    |
| Air pollution                                 |                     | Summer Smog: Number of days with ozone (O3) concentrations exceed 120 µg/m3              |   |                     |                |                      |                    |
|   |                     | Air quality index  |   |                     |                |                      |                    |
|   |                     | Days per year with levels of particulate matter above the normal                         |   |                     |                |                      |                    |
|   |                     | Total volume of emissions of sulphuric oxides  |   |                     |                |                      |                    |
|   |                     | Nitrogen oxides  |   |                     |                |                      |                    |
|   |                     | Methane emission   |   |                     |                |                      |                    |
|   |                     | Carbon dioxide emissions   |   |                     |                |                      |                    |
| Expenses / funding for environment protection |                     | Public expenses for environment protection   |   |                     |                |                      |                    |
| Risks and hazards                             |                     | Intensity of multiple risks (number of challenges) for European Regions ("Regions 2020") |   | INTERCO             |                |                      |                    |
|   |                     | Percentage of surfaces vulnerable to landslides of total surface                         |   |                     |                |                      |                    |

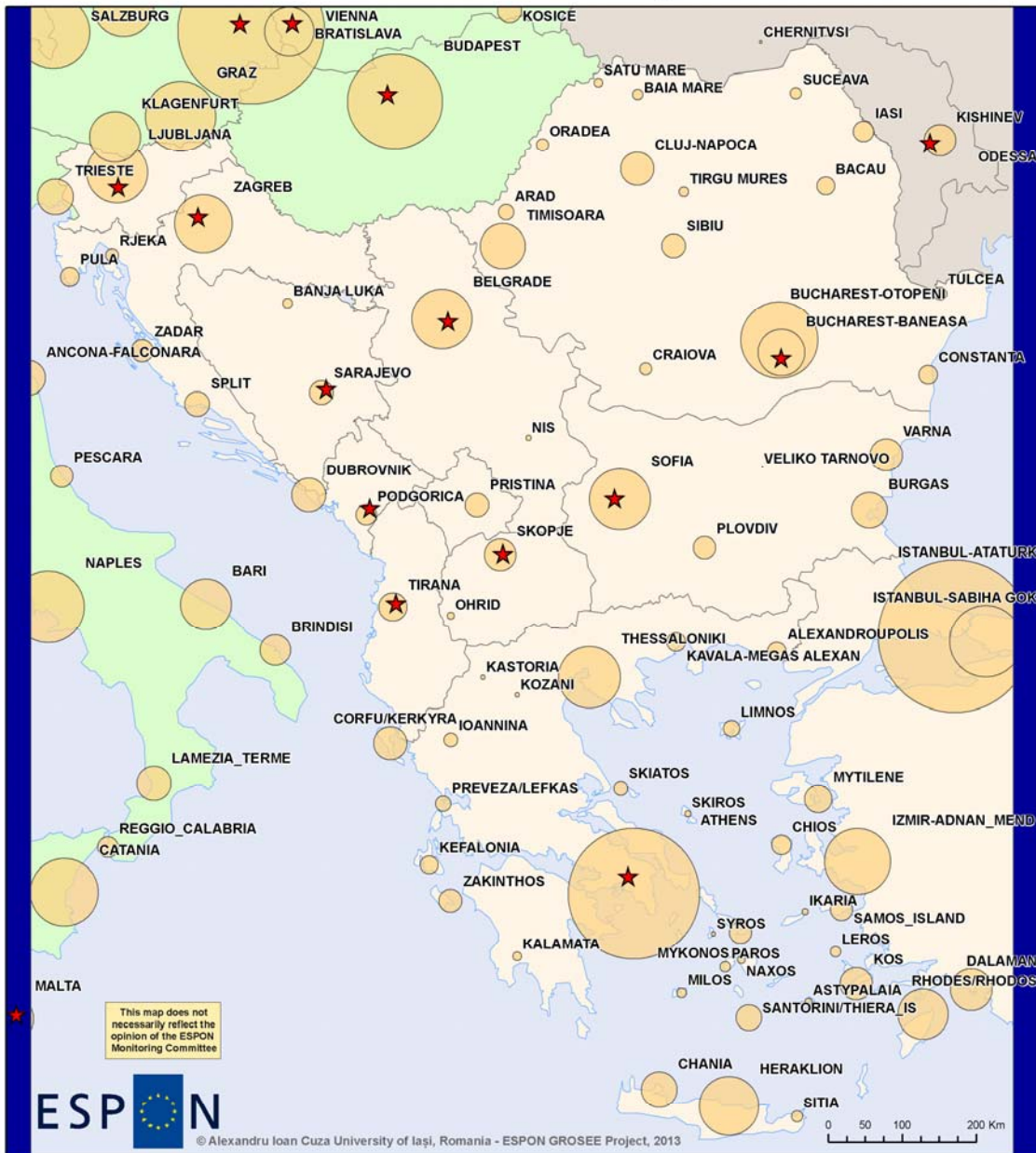
| Sub-themes     | Headline indicators | Indicator  | Similar indicator from Eurostat                             | Source of indicator                       | 5th Coh. Rep.* | Source of data | Europe 2020 target  |
|----------------|---------------------|--|---|---|----------------|----------------|---|
| Energy         | Headline            | Share of renewable energy in gross final energy consumption (and increase needed to meet the 20% target) | Share of renewable energy in gross final energy consumption | Eurostat / Europe 2020 headline / INTERCO |                | Eurostat       | 20% of energy from renewables                               |
|                | Headline            |  |   | Europe 2020 headline                      |                |                | 20% increase in energy efficiency                           |
| Climate change |                     | Potential vulnerability to climate change [ESPON Climate]  |   | INTERCO (Top ind.)                        |                |                |   |
|                | Headline            | Total amount of greenhouse gases   |   | Europe 2020 headline                      |                |                | Greenhouse gas emissions 20% (or even 30%,) lower than 1990 |

## 5. Territorial and urban structures and policies

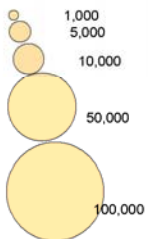
| Sub - themes          | Headline indicators | INDICATOR                         | Source of indicator (ESPON projects etc) | 5th Coh. Rep.* | Source of data |
|-----------------------|---------------------|-----------------------------------|--|----------------|----------------|
| Cooperation           | Headline            | Cooperation intensity             | INTERCO (Top ind.)                       |                | Eurostat       |
|                       | Headline            | Cooperation degree                | INTERCO (Top ind.)                       |                |                |
| Polycentricity, MEGAs |                     | Population potential within 50 km | INTERCO (Top ind.)                       |                | Eurostat       |
|                       |                     | Student number in CC              | Eurostat                                 |                | Eurostat       |

# ANNEX IV

Map 1 Aircraft Movements in SE Europe by Airport, in 2009



## Number of Movements



- ★ Capital Cities
- Other ESPON Countries
- SE Europe Countries
- Other European Countries

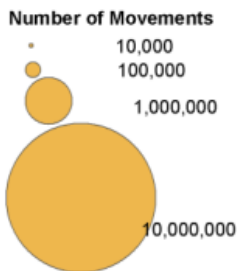
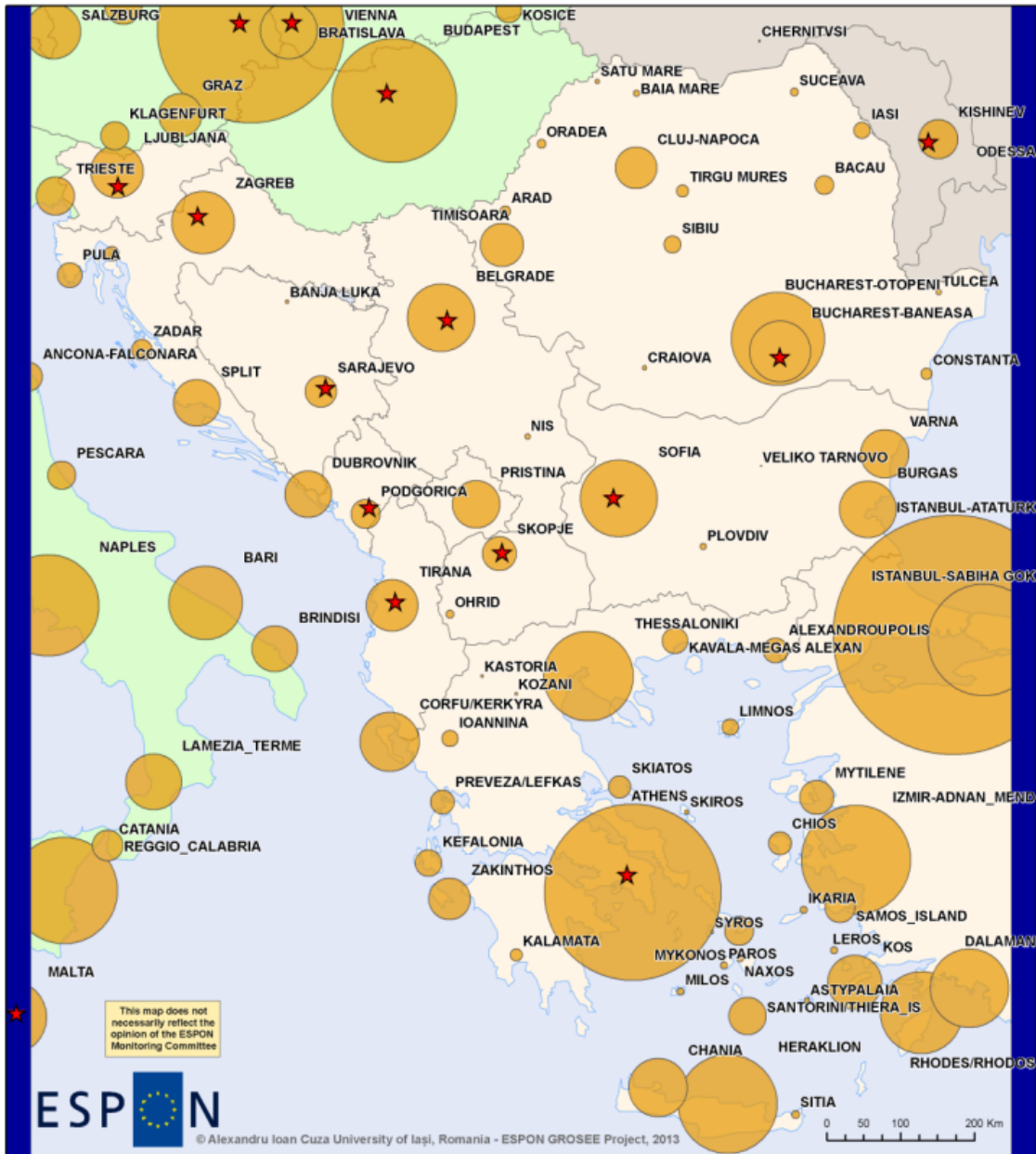


EUROPEAN UNION  
Part-financed by the European Regional Development Fund  
INVESTING IN YOUR FUTURE

Data sources: EUROSTAT, ACI World Traffic Report 2009, National Aviation Administrations  
Vector source - ESPON, Eurostat GISCO, JRC TransTools

This indicator - Number of Aircraft Movements reflects the total number of landings and take offs of either passenger, cargo or mail flights by airport in 2009

Map 2 Number of passengers by airport in SE Europe, in 2009



- ★ Capital Cities
- Other ESPON Countries
- SE Europe Countries
- Other European Countries

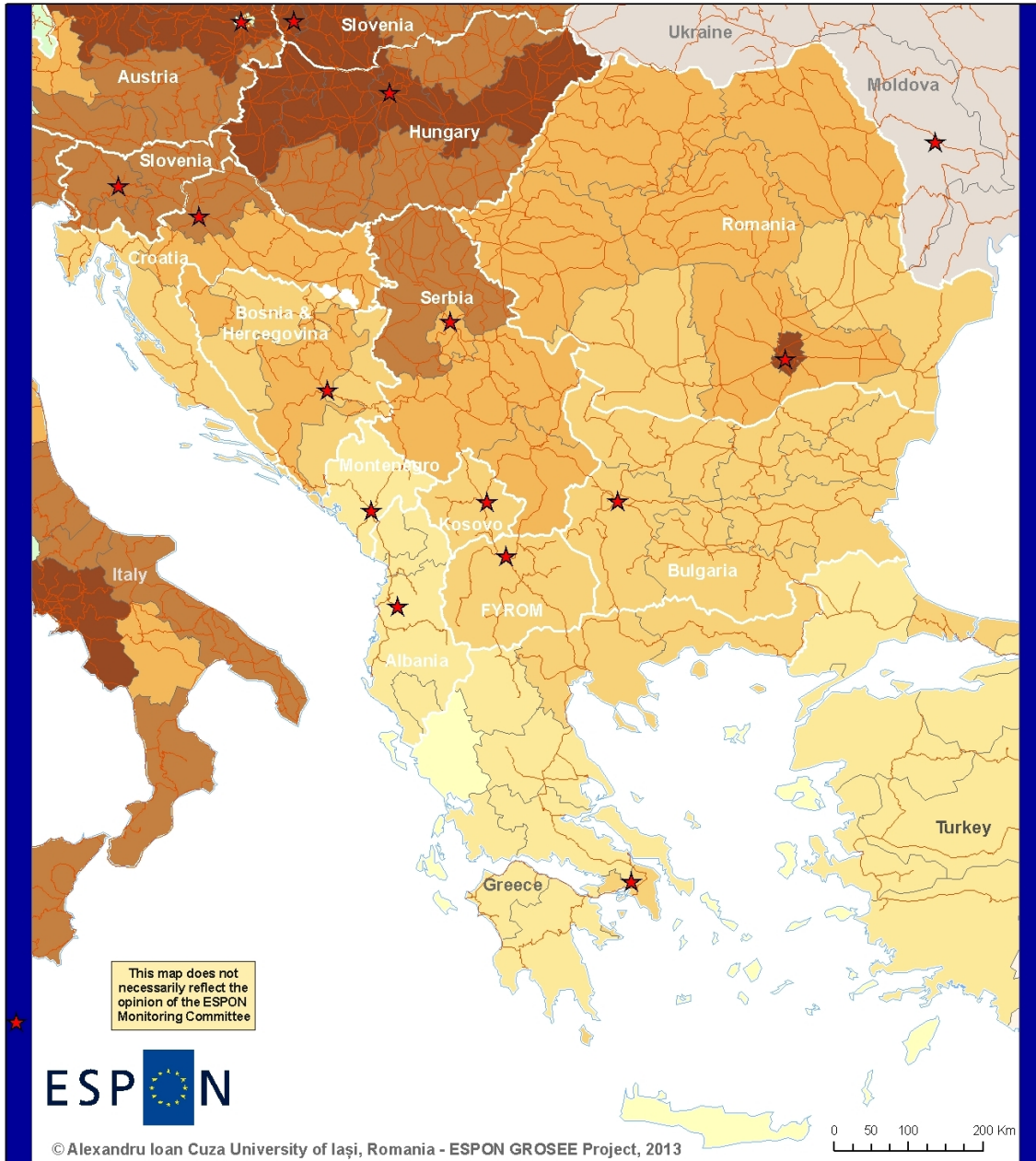


EUROPEAN UNION  
Part-financed by the European Regional Development Fund  
INVESTING IN YOUR FUTURE

Data sources: EUROSTAT, ACI World traffic Report 2009, National Aviation Administrations  
Vector source - ESPON, Eurostat GISCO, JRC TransTools

This statistic indicator - number of passengers by airport - reflects the number of passengers on board of incoming and outgoing commercial flights in 2009.

Map 3 Railway line length and density in Southeast Europe in 2010



**Network Density**  
(km line/1000 sq km)

- 0.0 - 1.0
- 1.1 - 25.0
- 25.1 - 37.0
- 37.1 - 50.0
- 50.1 - 80.0
- 80.1 - 130.0
- 130.1 - 450.0

- ★ Capital Cities
- Rail Network
- Other ESPON Countries
- SE Europe Countries
- Other European Countries



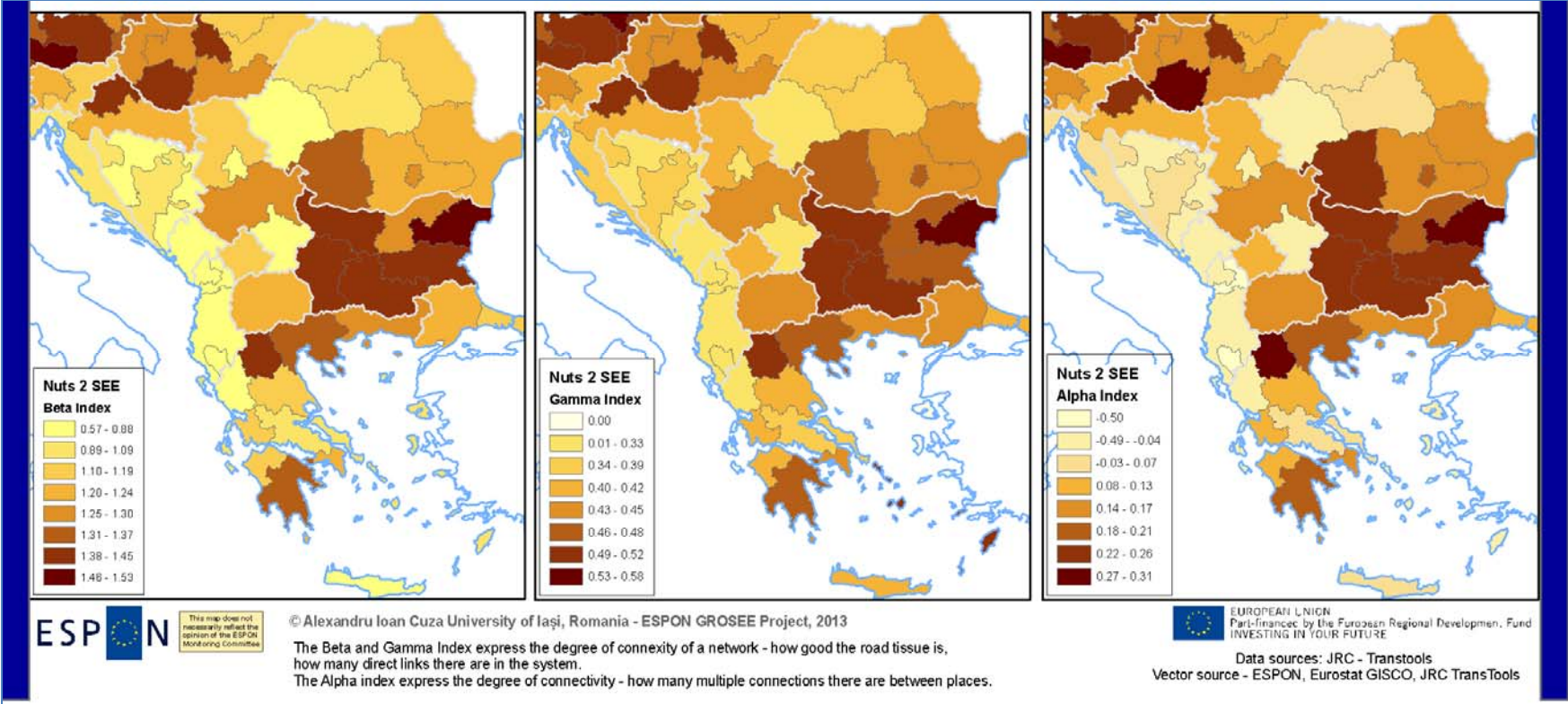
EUROPEAN UNION  
Part-financed by the European Regional Development Fund  
INVESTING IN YOUR FUTURE

Data sources: EUROSTAT, ACI World traffic Report 2009  
Vector source - ESPON, Eurostat GISCO, JRC TransTools

The railway density has been calculated by dividing line length to region surface in 2010 (km of rail by 1000sq.km).



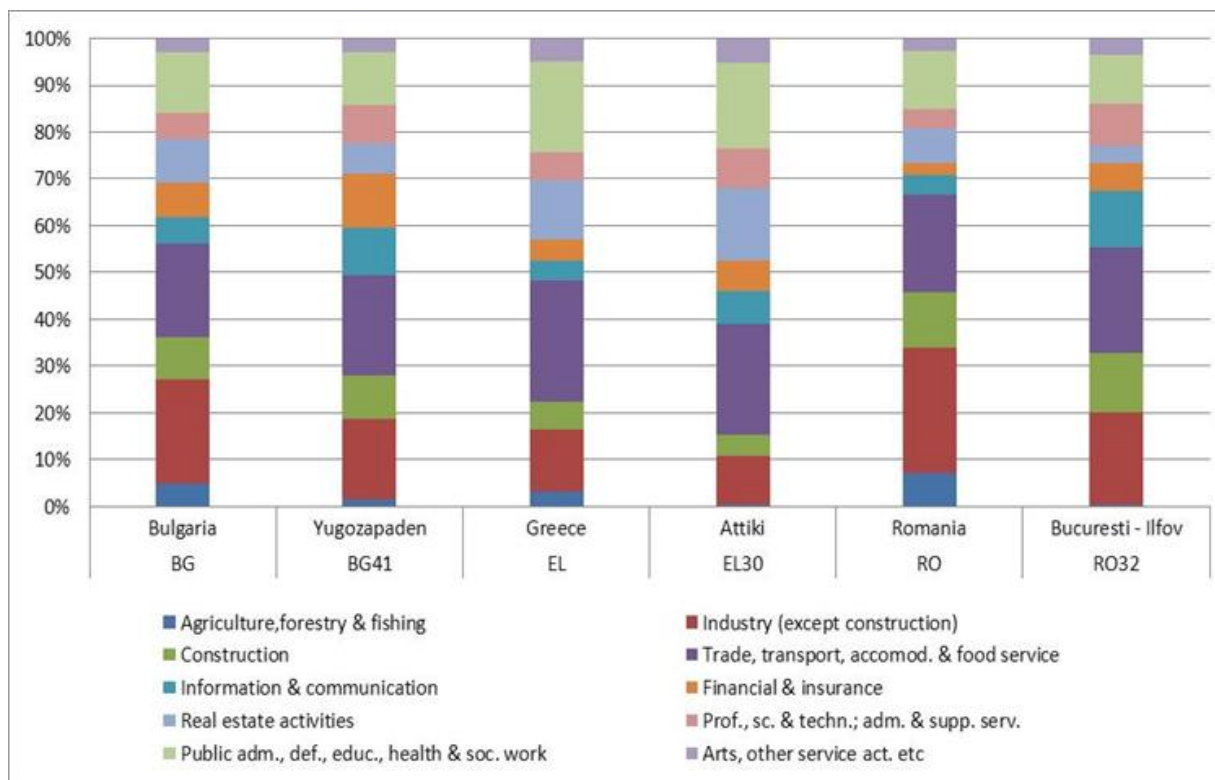
Map 4 Road Connexity and Connectivity Indices by NUTS 2 in SE Europe



**Table 1 GVA per economic sector % in the three countries and capitals in 2009**

| <b>Country/capital (NUTS 2)</b>   | <b>Bulgaria</b> | <b>Sofia<br/>/ BG41</b> | <b>Greece</b> | <b>Attiki<br/>/ EL30</b> | <b>Romania</b> | <b>Bucharest<br/>/ RO32</b> |
|---|-----------------|-------------------------|---------------|--------------------------|----------------|-----------------------------|
| Agriculture, forestry & fishing   | 4.8             | 1.5                     | 3.1           | 0.3                      | 7.2            | 0.3                         |
| Industry (except construction)  | 22.1            | 17.2                    | 13.4          | 10.4                     | 26.8           | 19.7                        |
| Construction  | 9.2             | 9.2                     | 5.8           | 4.6                      | 11.7           | 12.9                        |
| Trade, transport,<br>accommodation & food<br>service                                    | 20              | 21.5                    | 26            | 23.8                     | 20.9           | 22.6                        |
| Information & communication   | 5.7             | 10.3                    | 4.3           | 6.9                      | 4.3            | 11.9                        |
| Financial & insurance   | 7.1             | 11.4                    | 4.4           | 6.4                      | 2.5            | 5.9                         |
| Real estate activities  | 9.4             | 6.6                     | 12.5          | 15.5                     | 7.3            | 3.8                         |
| Professional, scientific &<br>technical, administrative &<br>support services           | 5.5             | 8.1                     | 6             | 8.7                      | 4.4            | 9.1                         |
| Public administration,<br>defence, education, health &<br>social work activities        | 13.2            | 11.2                    | 19.5          | 18.2                     | 12.3           | 10.2                        |
| Arts, other services, activities<br>of households & extra-<br>territorial organizations | 2.9             | 3                       | 4.9           | 5.3                      | 2.6            | 3.6                         |
| Own elaboration, based on Eurostat data   |                 |                         |               |                          |                |                             |

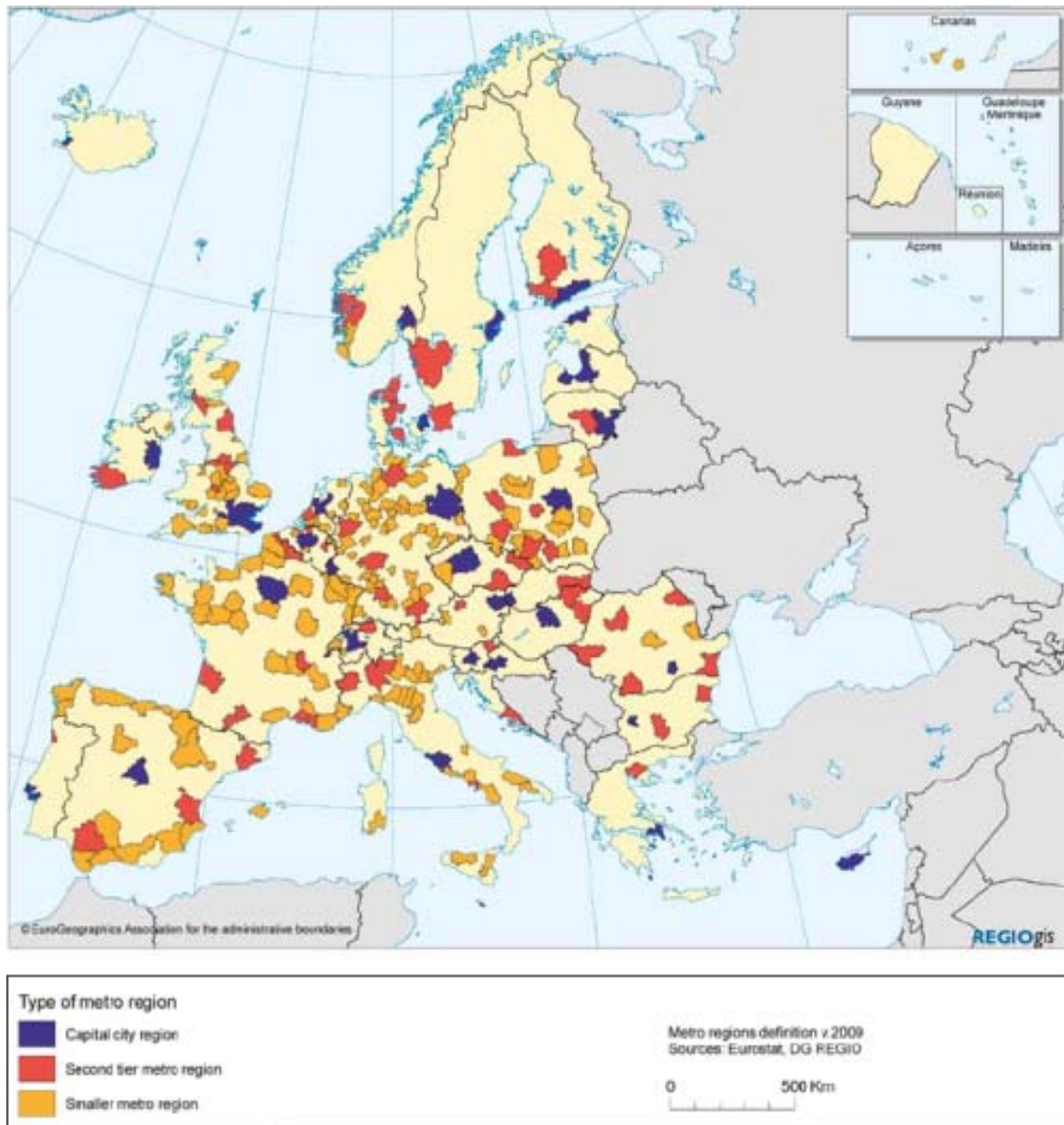
Figure 1 GVA per economic sector in 2009 in the three countries and capitals



Own elaboration, based on Eurostat data



Map 5 Types of metropolitan regions by Eurostat: Capital city regions, Second tier metro regions, smaller metro regions



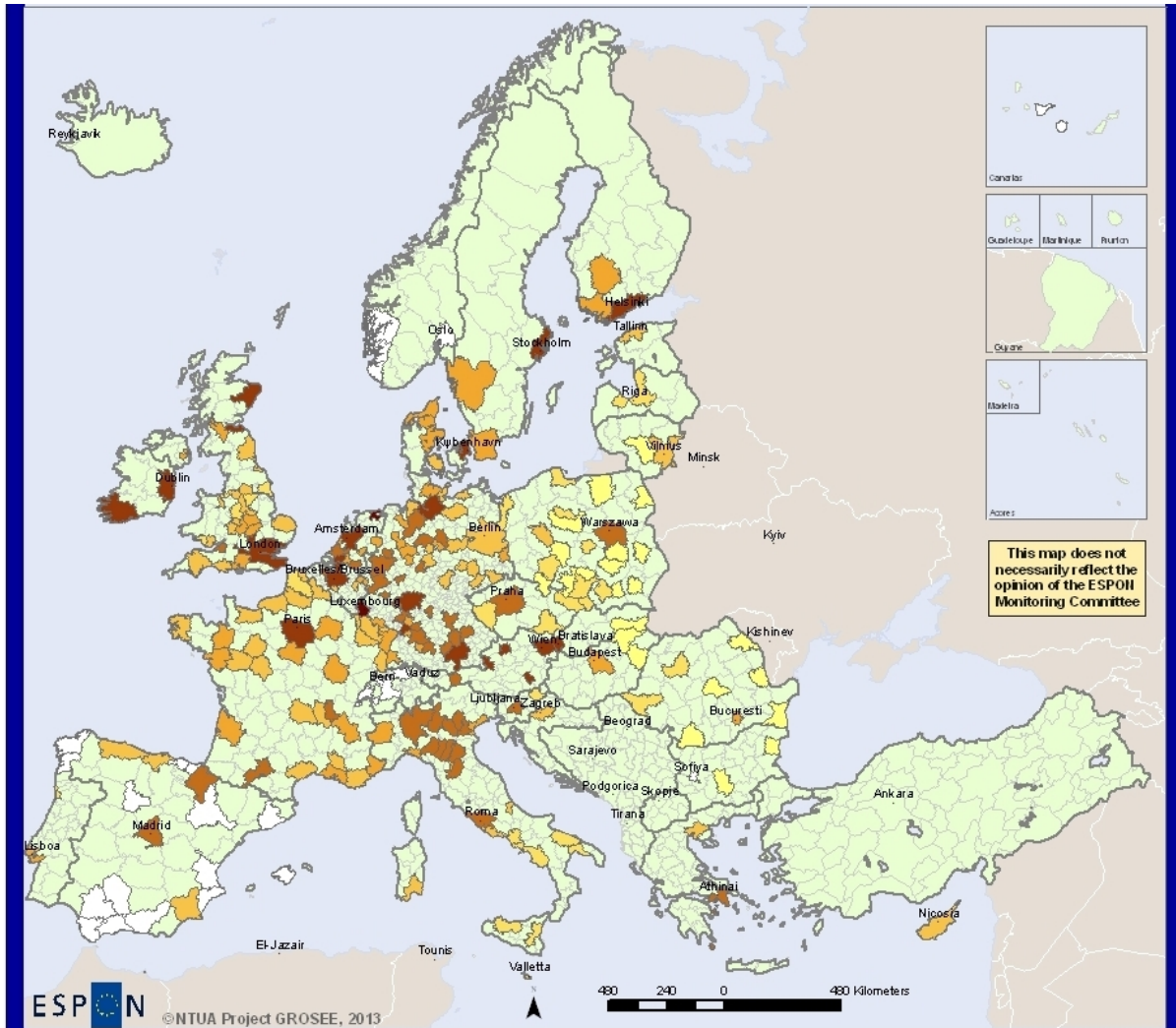
Source:

[http://epp.eurostat.ec.europa.eu/statistics\\_explained/index.php/Regional\\_typologies\\_overview](http://epp.eurostat.ec.europa.eu/statistics_explained/index.php/Regional_typologies_overview)

**Table 2 Indicators used for the case study metros per NUTS level of approximation**

| Indicators per aspect of competitiveness  | NUTS level of data and the MR approximation |
|---|---|
| <i>Economic performance</i>   |   |
| GDP PPS per capita as percentage of the EU27 average  | NUTS3                                       |
| Gross Value Added (GVA) at basic prices per activity sectors  | NUTS2                                       |
| <i>Innovation / R&amp;D</i>   |   |
| Overall R&D expenditure as percentage of GDP  | NUTS2                                       |
| Number of patents per millions of inhabitants   | NUTS3                                       |
| Broadband penetration rate as percentage of total households  | NUTS2                                       |
| <i>Labour force/human potential</i>   |   |
| Labour productivity (in relation to the EU27 average) *   | NUTS3                                       |
| Employment rate as percentage of active population aged 20-64   | NUTS2                                       |
| Unemployment rate (percentage of active population aged 15-74)  | NUTS2                                       |
| Population aged 30-34 with tertiary education   | NUTS2                                       |
| <p>* Labour productivity was calculated as the ratio of the regional GDP in millions of PPS per 1000 employees</p>  |   |
| <p>** Tertiary education – provided by universities and other higher education institutions – is the level of education following secondary schooling</p> |   |
| <p>See for the indicators in previous sections of GROSEE and among other in: ESPON Atlas 2013.</p>  |   |

Map 6 EU metros: GDP PPS 2009 in percentage of the EU average (=100)



ESPON

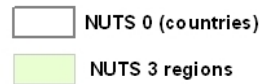
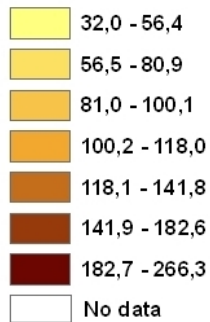
©NTUA Project GROSEE, 2013

EL DROPEA UNICIN  
Part "Investing in the Future" Regions Development Fund  
INVESTING IN YOUR FUTURE

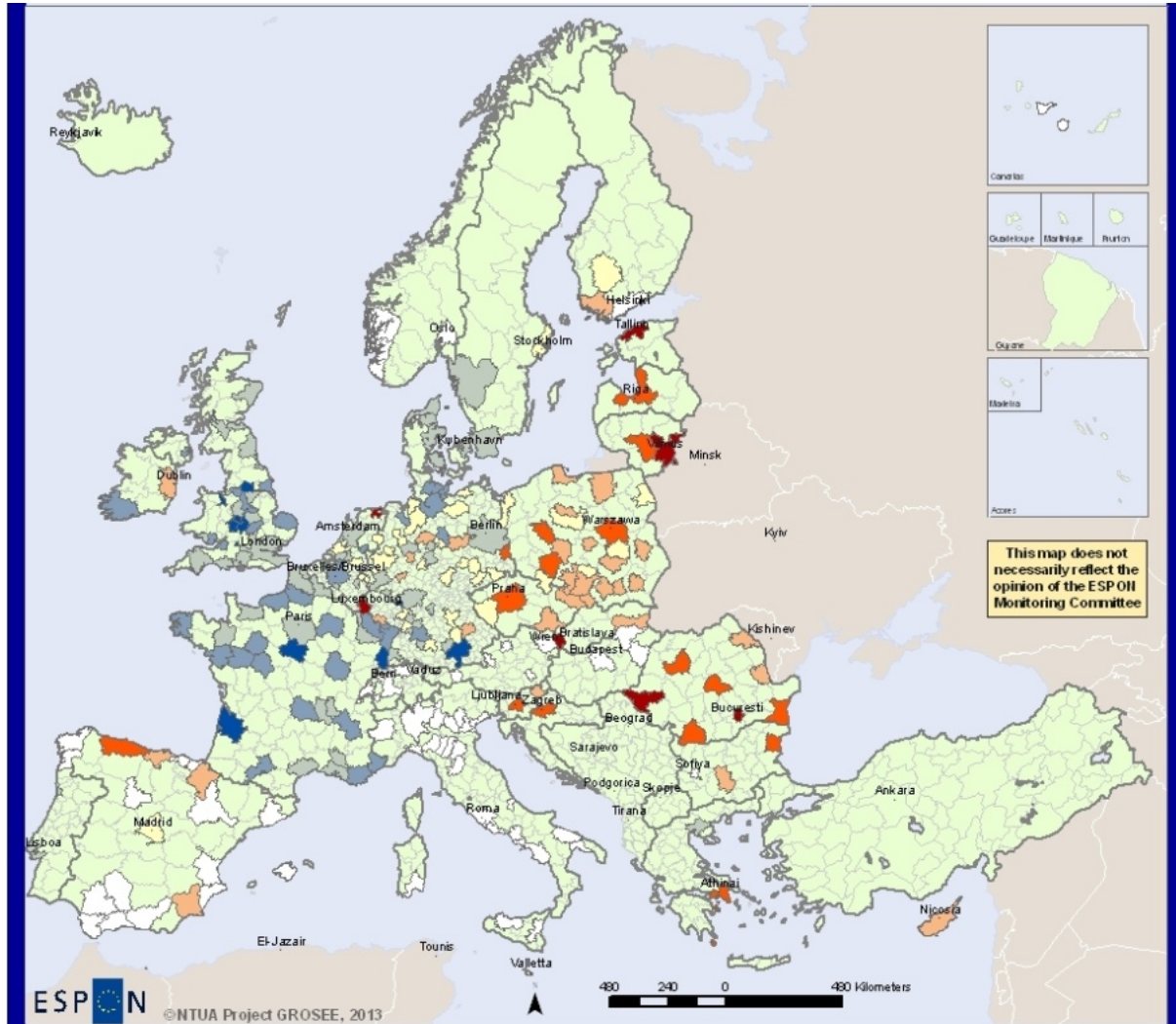
Regional level: NUTS 3, metropolitan regions (DG REGIO)

Source: Eurostat, 2012  
Origin of data: Eurostat, 2012  
© EuroGeographics Association for administrative boundaries

**Metropolitan regions:  
GDP PPS 2009 in percentage  
of the EU27 average (=100)**



Map 7 EU metros: Gains or losses 2001-2008 in percentage points of the GDP PPS EU27 average (=100)



ESPON NTUA Project GROSEE, 2013

EUROPEAN UNION  
Part-financed by the European Regional Development Fund  
INVESTING IN YOUR FUTURE

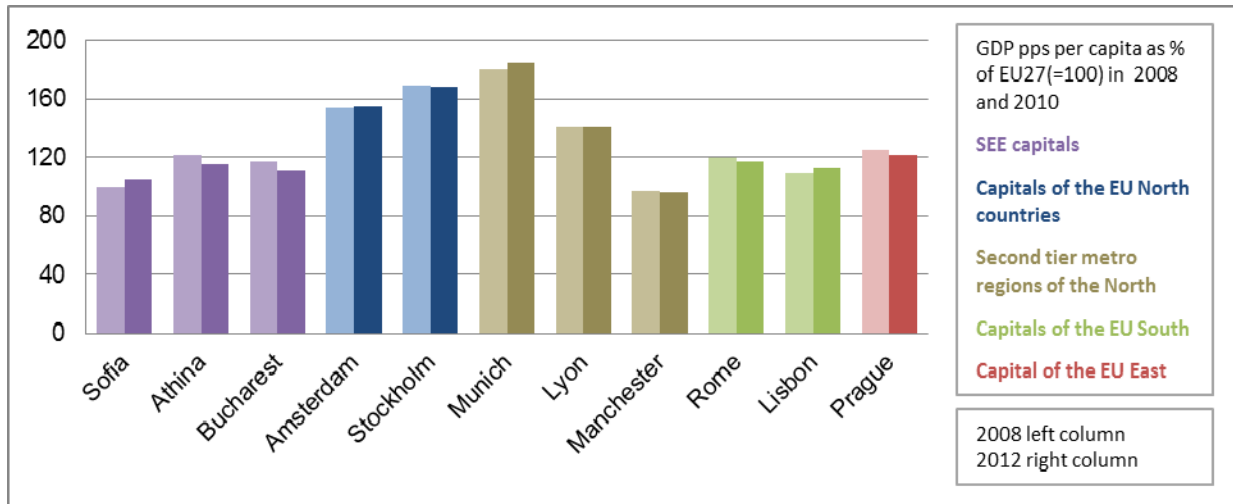
Regional level: NUTS 3, metropolitan regions (DG REGIO)  
Source: Eurostat, 2012  
© Euro Geographics Association for administrative boundaries

**Metropolitan regions:  
Gains or losses 2001-2008  
in percentage points  
of the EU27 average (=100) GDP PPS**

- 22,90 - -14,10
- 14,09 - -7,40
- 7,39 - -1,20
- 1,19 - 5,20
- 5,21 - 13,00
- 13,01 - 26,30
- 26,31 - 60,10
- No data

- NUTS 0 (countries)
- NUTS 3 regions

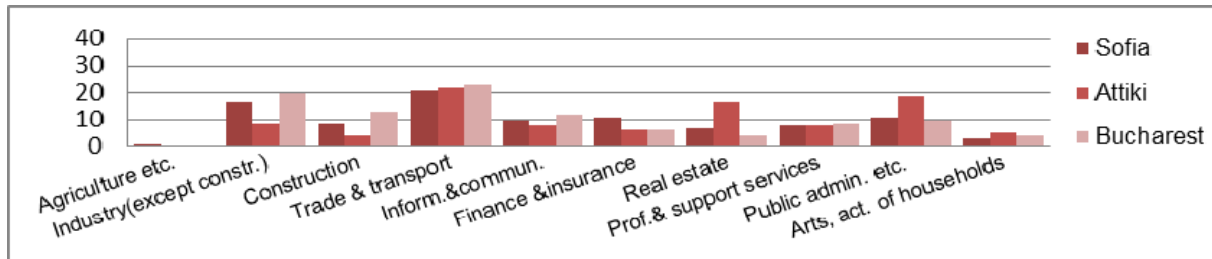
**Figure 2 SEE capitals and case studies metros: GDP PPS per capita as % of EU27 average (=100) in 2008 and 2010**



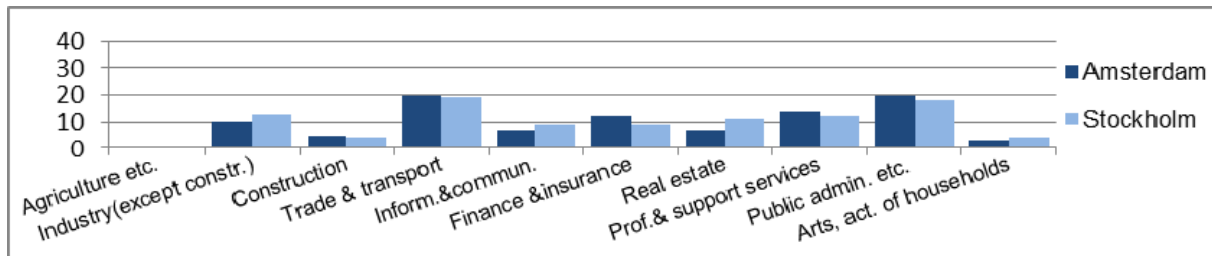
Approximation NUTS3 of the metros (Eurostat), Rome: approximation NUTS2  
Own elaboration, based on Eurostat data

**Figure 3 SEE capitals and case studies metros: Gross value added per economic sector in % of total GVA at basic prices in 2009**

**SEE capital city metros**

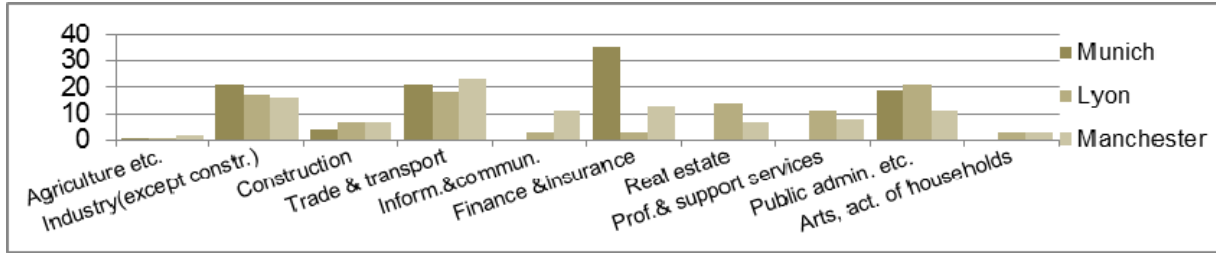


**“North” capital city metros**



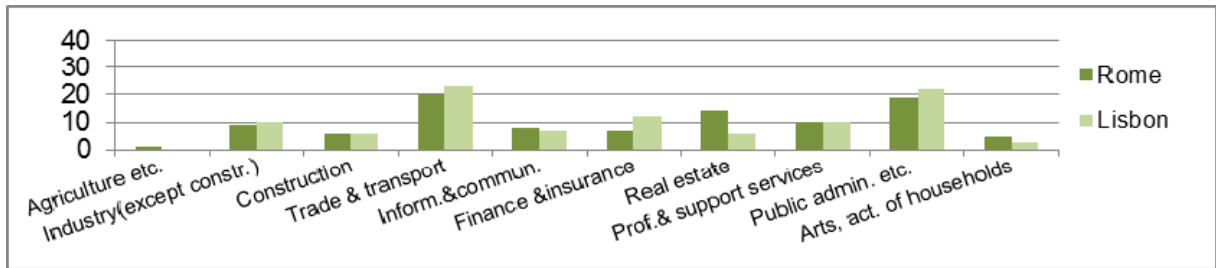
**“North” second tier metros**



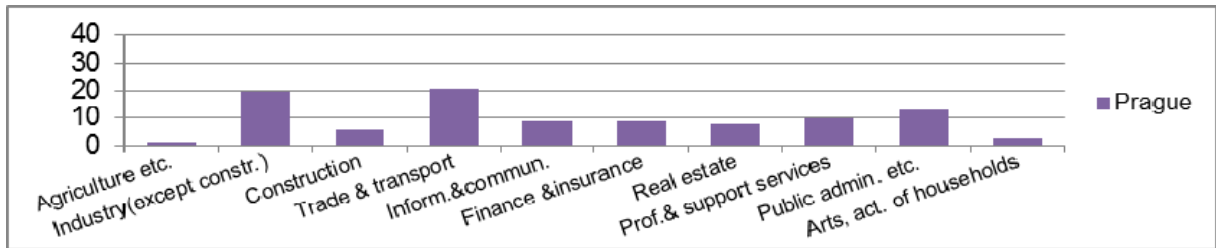


\*Data for Munich available at larger categories (1.Agriculture etc., 2.Industry (except construction), 3.Construction, 4.Trade, transport, information & communication, 5.Finance, insurance, real estate, professional & support services, 6.Public administration, arts, activities of households etc.)

### “South” capital city metros



### “East” capital city metro



**Table 3 SEE capitals and case studies metros: Labour productivity as ratio of GDP in millions of PPS per 1000 of employees, 2008, 2010, 2008-2010 change in percentage points**

| Types of metros   | Metros           | 2008 | 2010 | 2008-2010<br>change in<br>percent. points |
|---|------------------|------|------|---|
| <b>SEE capitals</b>   | <b>Sofia</b>     | 39   | 40   | 2   |
|   | <b>Attiki</b>    | 84   | 81   | -3  |
|   | <b>Bucharest</b> |      | 58   | -3  |
| <b>Capitals of the EU North</b>   | Amsterdam        | 92   | 93   | 1   |
|   | Stockholm        |      | 79   | 0   |
| <b>Second tier metros of the EU north</b>   | Munich           | 82   | 82   | 0   |
|   | Lyon             | 73   | 73   | 0   |
|   | Manchester       | 61   | 61   | 0   |
| <b>Capitals of the EU South</b>   | Rome             | 85   | 81   | -3  |
|   | Lisbon           | 54   | 55   | 2   |
| <b>Capitals of the EU East</b>  | Prague           | 61   | 62   | -1  |
| <b>Approximation NUTS3 of the metros (Eurostat), Rome: approximation NUTS2.<br/>Own elaboration, based on Eurostat data</b> |                  |      |      |   |

# ANNEX V

## List of Abbreviations

|          |  |
|----------|--|
| SEE      | South East Europe  |
| R&D      | Research and Development   |
| EU       | European Union   |
| TEN-T    | The Trans-European Transport Network   |
| GROSEE   | Espon Project Growth Poles in South East Europe                                      |
| FP       | Framework Programme  |
| NUTS     | Nomenclature of Territorial Units for Statistics                                     |
| LAU      | Local Administrative Unit  |
| ESPON    | European Observation Network for Territorial Development and Cohesion                |
| SMART    | Criteria for guidance in the setting of the objectives                               |
| SWOT     | Analysis or methodology to evaluate Strengths, Weaknesses, Opportunities and Threats |
| MEGA     | Metropolitan European Growth Areas   |
| FUA      | Functional Urban Area  |
| GDP      | Gross Domestic Product   |
| PUSH     | Potential Urban Strategic Horizons   |
| PIA      | Polycentric Integration Areas  |
| TRACC    | Espon Project Transport accessibility at regional/local scale and patterns in Europe |
| RO       | Romania  |
| BG       | Bulgaria   |
| GR       | Greece   |
| EUROSTAT | Organization for data collection   |
| BBU      | Baneasa Airport  |
| OTP      | Otopeni Airport  |
| FYROM    | Former Yugoslav Republic of Macedonia  |
| EC       | European Commission  |



|          |  |
|----------|--|
| FMA      | Functional Metropolitan Area   |
| FOCI     | Espon Project Future Orientation for Cities                            |
| ECR2     | Espon Project Economic Crisis: Resilience of Regions                   |
| SGPTD    | Espon Project Second Tier Cities and Territorial Development in Europe |
| PPS      | Power Purchasing Standard  |
| GVA      | Gross Value Added  |
| FDI      | Foreign Direct Investments   |
| CORDIS   | Community Research and Development Information Service                 |
| MR       | Metropolitan Region  |
| APS      | Advanced Producer Services   |
| HT       | High Tech  |
| EPO      | European Patent Office   |
| CC       | Core City  |
| CU       | Coordination Unit  |
| OMR      | Outer Metropolitan Area  |
| NGO      | Non Governmental Organization  |
| ICT      | Information and Communication Technology                               |
| EU CSF   | European Union Community Support Framework                             |
| IMF      | International Monetary Funds   |
| INTERREG | Initiative for stimulating cooperation                                 |
| GaWC     | Globalization and World Cities   |
| CORDIS   | Community Research and Development Information Service                 |

# ANNEX VI

## Interviews guidelines with representatives of stakeholders

### The city and its metropolitan area

1. What do you think is the spatial extension of the metropolitan area?
2. Which criteria should be taken into consideration for the delimitation of the metropolitan area?
3. Should the metropolitan area have administrative and executive powers like a territorial administrative unit?
4. How will the present social and economic disparities between the city core and its metropolitan region influence the future development of the city core and the metropolitan area?
5. How might the demographic potential, the gender structure or the migration influence the future evolution of the urban dynamics?
6. What are in your opinion the strategic economic branches for the city core and its metropolitan area and how could they influence and support future development of the overall economy?
7. What was the influence of the economic relocated activities from the city to the metropolitan area?
8. How important was the contribution of foreign investors coming from Sofia and Athens and other capitals to the local economy?
9. By taking into consideration the current characteristics of the unemployment rate and poverty, how do you appreciate the future evolution of these phenomena and what effects could they have in the evolution of the metropolitan area?
10. How do you perceive the role of the land conversion (deindustrialization, relocations, and extramural conversion to built-up areas) and the urban regeneration process in creating new development assets? How do you see the achievement of the city's new master plan? What do you expect from it?
11. On a scale from 1 (the most important) to 5 (the least important), how can you rank the following indicators, considering their contribution to the life quality – level of incomes, criminality rate, pollution, health assistance, quality of education.

12. On a scale from 1 (very good) to 5 (very poor), how do you appreciate the accessibility from Bucharest to its metropolitan area by means of transportation (by car, by train, by bus)?
13. Could you propose some priority measures to improve these aspects?
14. Which should be the development directions of the metropolitan public transport?
15. Where should be the intermodal nodes located in order to have a more fluent transition between the city core and its metropolitan area?
16. How are Bucharest and its metropolitan area influencing each other in terms of waste management and pollutant activities? What is their level of cooperation? What about the green areas?
17. How important are the relations with the metropolitan region for the city core?
18. How important are the relations with the city core for the metropolitan region?

#### **Cooperation between the three capitals and inside of Balkan area**

19. Are there some main cooperation areas between Bucharest, Sofia and Athens (e.g. public transport, infrastructure, waste management, environmental protection, territorial management plans, other)? On which ones should the next INTERREG and Cross-border programs focus on?
20. Specify the city's strengths and weaknesses in terms of cooperation development with the other two capitals. What should be the outcomes of the city cooperation with the other two capitals?
21. How do you see the future development of cooperation between the three capitals?
22. What is the present status of the relationships between the three capitals and other big cities in the Balkans?
23. Do you see Istanbul and Belgrade as main partners or competitors taking into consideration their economic and cooperation potential and their competitiveness?
24. What should be the role of the three capitals in structuring an urban network in the Balkans?
25. What should be the main concern of a new strategy for the future development of the Balkan urban system, including the Western Balkan big cities, and also Chisinau and Istanbul?

#### **Cooperation with the European core**

26. What do you believe about the cooperation between the Capital and the most developed areas (countries) from Central and Western Europe? Could you mention the most important cooperation areas?
27. For a better exceeding of the crisis period what is the most desirable cooperation between the Capital and other western European cities?
28. Do you believe that the trans-European corridor modernization could represent an important element for a better connection of the capital to the European core?
29. Can you define some policies that might influence cooperation between the Balkan urban system and European core? What kind of policies should be elaborated to strengthen the importance of Athens-Sofia-Bucharest axis?
30. How can the Balkan urban system be made functional (integrated) at an international scale, given the geographical position between European and West Asian urban systems?

# ANNEX VII

## List of institutions from which representatives participated to the interviews (work in progress)

### **Romania**

County Council Giurgiu  
Romanian-Bulgarian Chamber of Commerce and Industry  
Agency for Regional Development Sud-Muntenia  
Agency for Regional Development Bucuresti-Ilfov  
Municipality of Otopeni  
Institute of National Economies  
Institute of Geography of the Romanian Academy  
Agency for Environmental Protection Ilfov  
Agency for Environmental Protection Bucuresti

### **Bulgaria**

Municipality of Sofia  
University of Architecture, Civil Engineering and Geodesy  
Ministry of Regional Development  
Municipality of Sofia  
University of architecture, civil engineering and geodesy  
Ombudsman of Sofia municipality  
Bulgarian Industrial association  
Arch. Borislav Borisov, member of the Regional chamber of architects – Sofia and municipal councilor

### **Greece**

Greek Ministry of Development and Competitiveness  
Greek Ministry of Environment, Energy and Climate Change – Direction for spatial planning and urban development  
Greek Ministry of Environment, Energy and Climate Change – Direction of environment

Region of Attiki

Organization for Planning and Environmental Protection of Athens

Municipality of Athens

Athens Urban Transport Organization

Athens Chamber of Commerce and Industry

WWF (World Wide Fund of Nature)

ENVIPLAN – Private bureau for urban and regional studies