

The European Commission's science and knowledge service

Joint Research Centre



Data and evidence in support to Integration Policies

Migration flows and integration policies:
data evidence and best practices in the EU

Michele Vespe

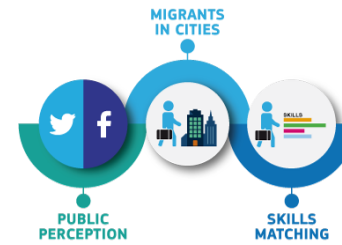
Joint Research Centre, European Commission

Athens, 22-23 November 2018

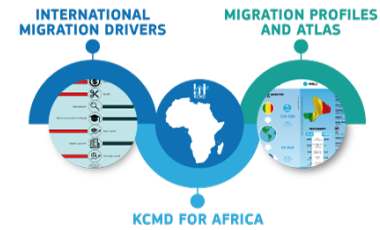
Knowledge Centre on Migration and Demography



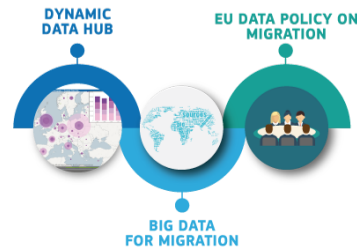
INTERNAL MIGRATION



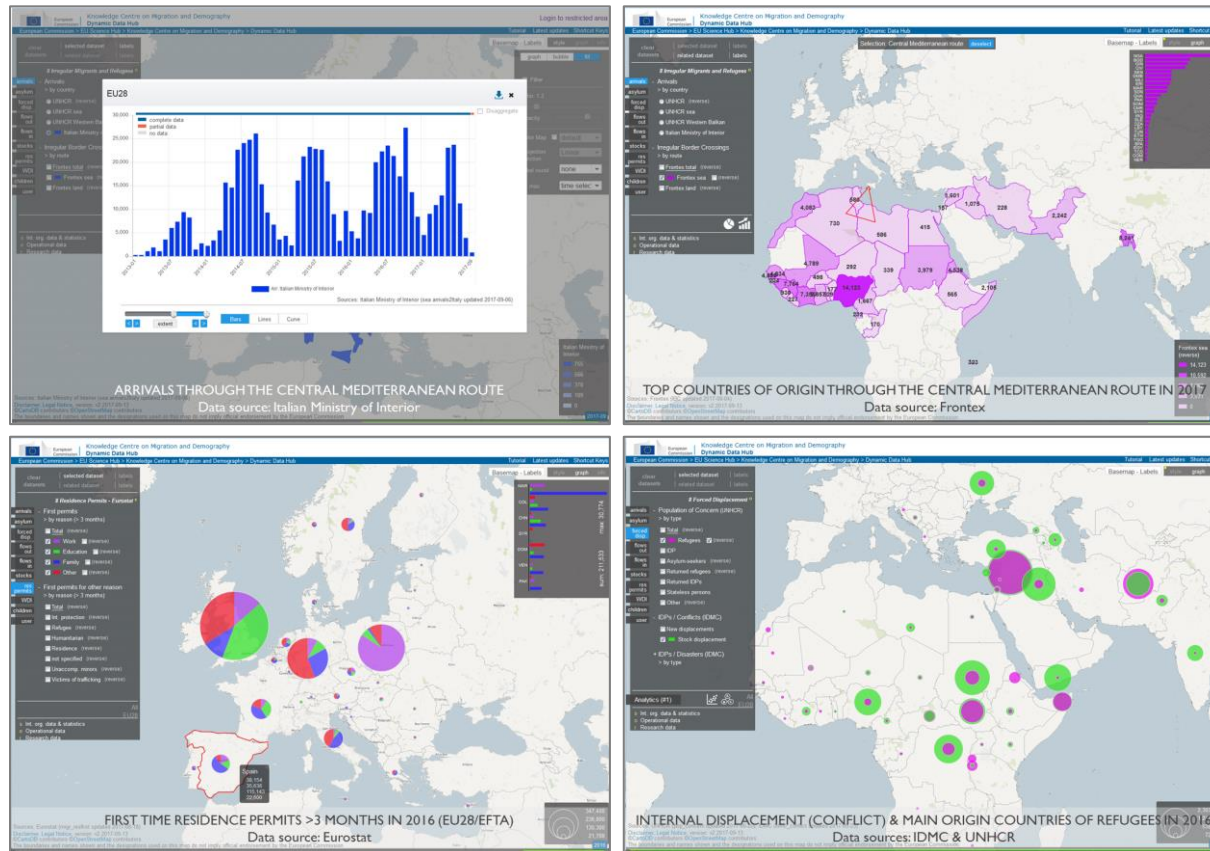
EXTERNAL MIGRATION



DATA FOR MIGRATION



The Dynamic Data Hub



50+ datasets collected by EU Institutions, Agencies and MSs, and international organisations worldwide

To help policy makers, researchers and stakeholders **to analyse data**

Cross-domain data on stocks, flows, children in migration, forced displacement, demographic and socio-economic indicators

the **Dynamic** Data Hub will be enriched with more sets of data...

<https://bluehub.jrc.ec.europa.eu/migration/app/index.html>

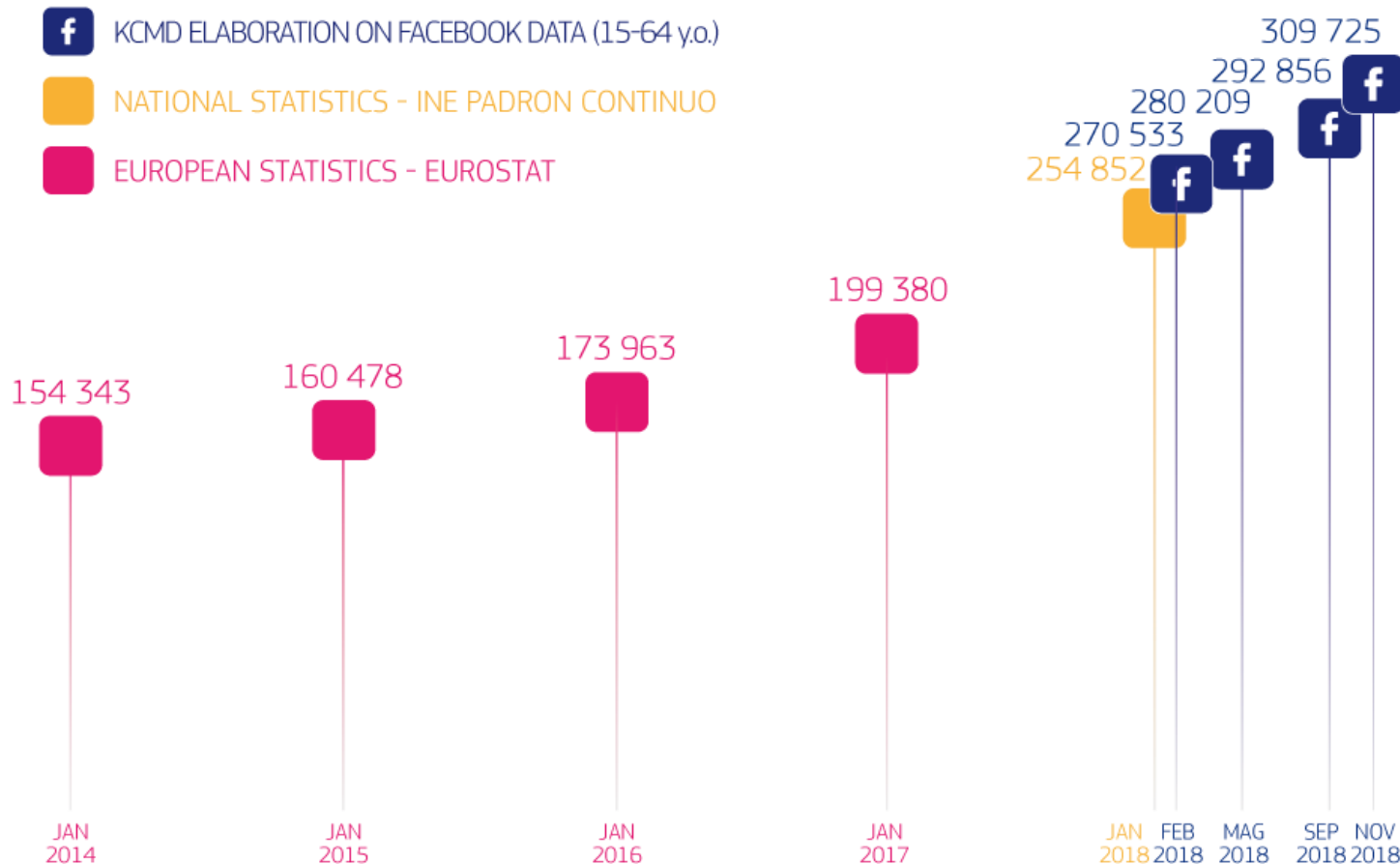
Big Data for Migration (BD4M) Alliance



The European Commission and the International Organization for Migration launch the **Big Data for Migration Alliance (BD4M)**, a global initiative to unlock the potential of big data sources and provide valuable insights related to migration



Facebook complementing world statistics on the stock of migrants









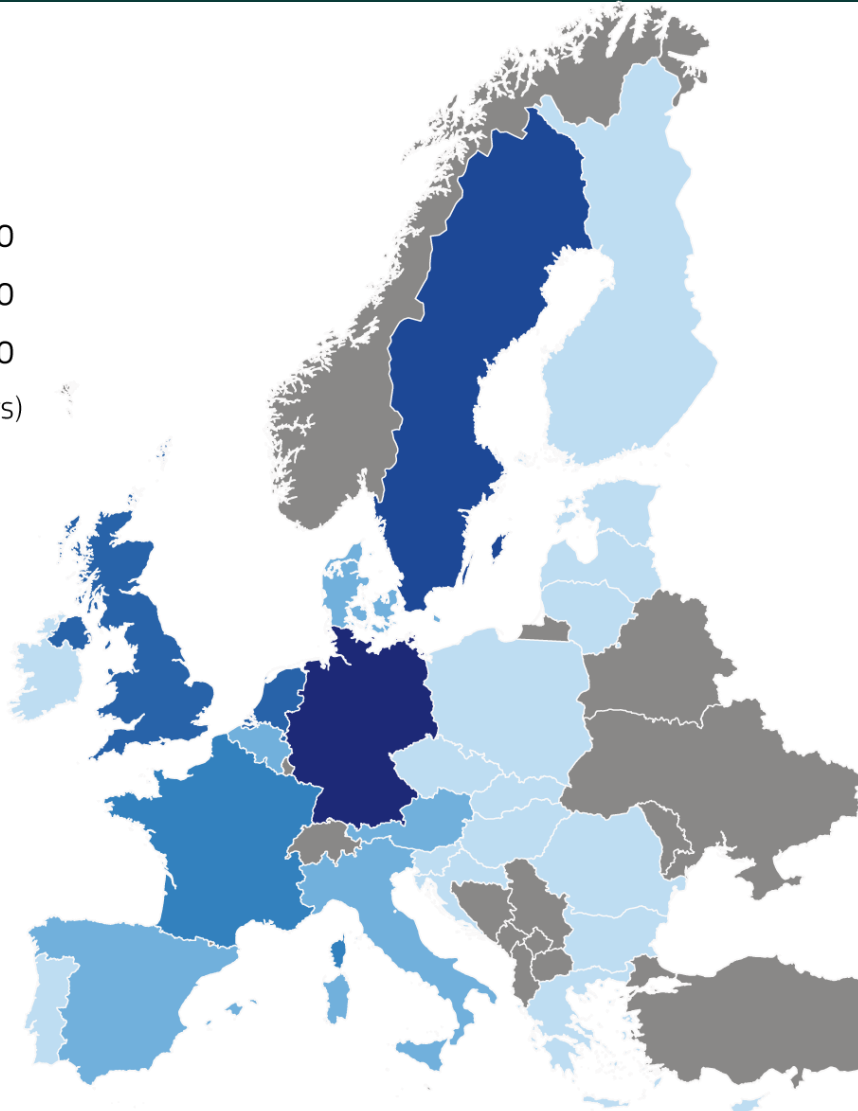
Latest EU official statistics: 1-Jan-17,
Spanish Statistical Office: 1-Jan-18

Facebook Advertising Platform data:
high refresh rate – real time census

"Migration Data using Social Media" Spyrtatos, S.,
M. Vespe, F. Natale, I. Weber, E. Zagheni and M.
Rango, doi:10.2760/964282, 2018

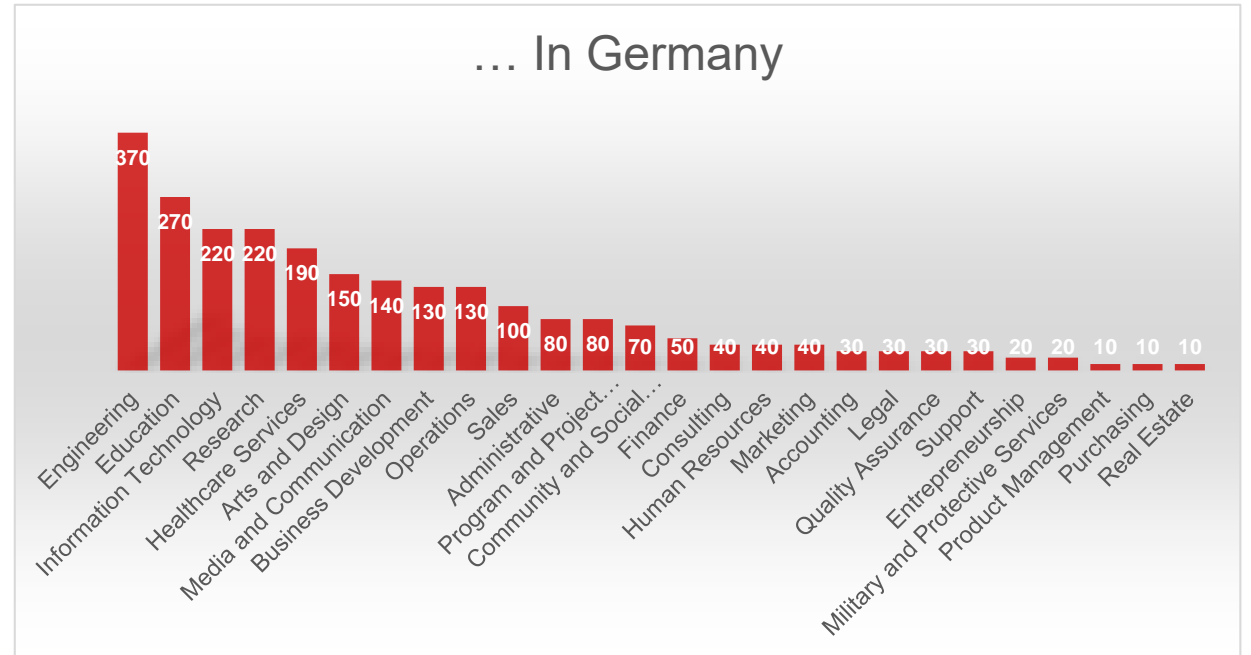
Human Capital of recently arrived migrants using LinkedIn

-  < 200
 -  200 - 500
 -  500 - 1000
 -  1000 - 2000
 -  2000 - 3000
 -  3000 - 4000
- (Absolute numbers)

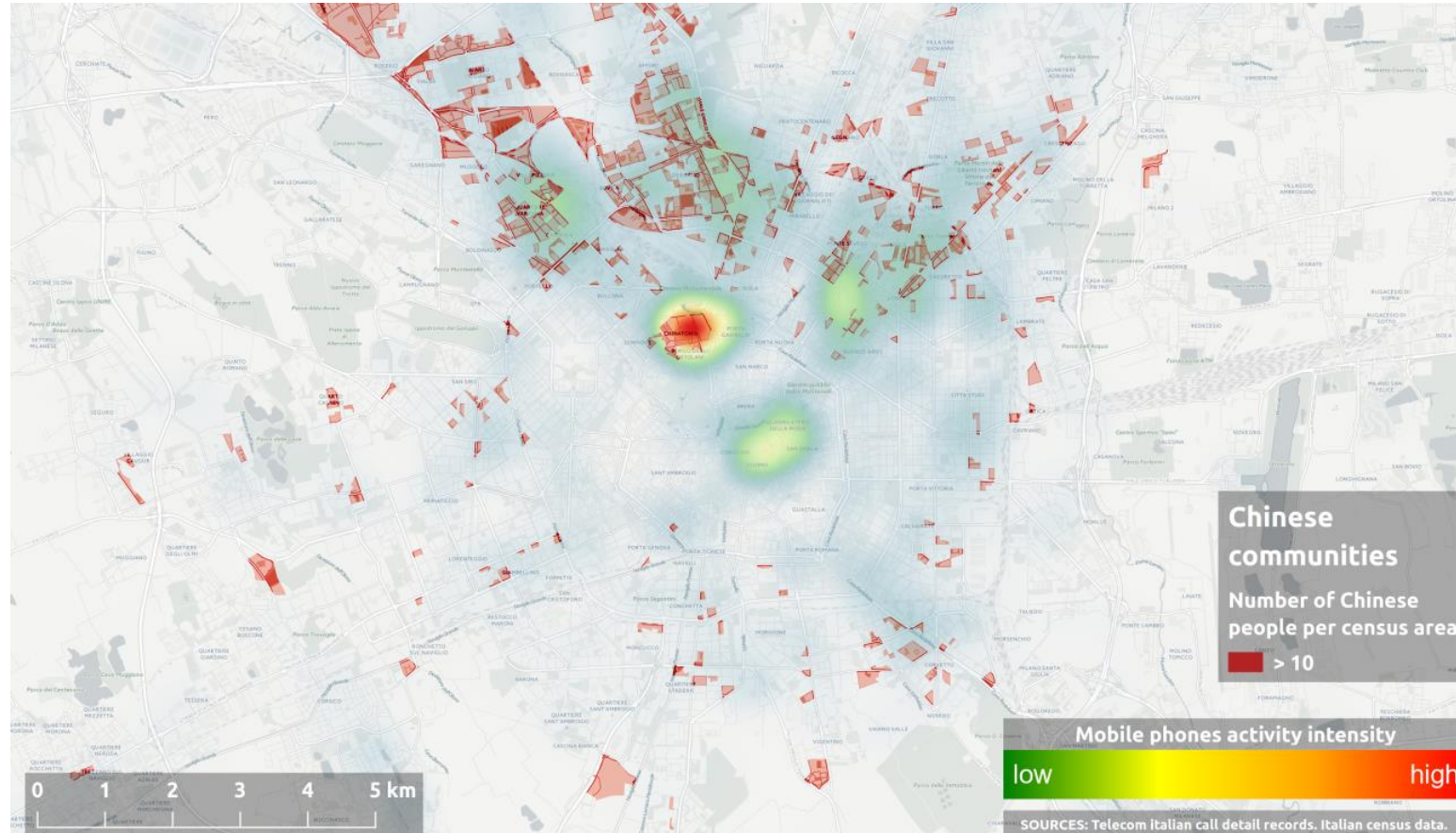


Example of highly-skilled migrants using LinkedIn advertising platform

... In Germany



Mobile phones data to study social interaction with cities of migrant communities

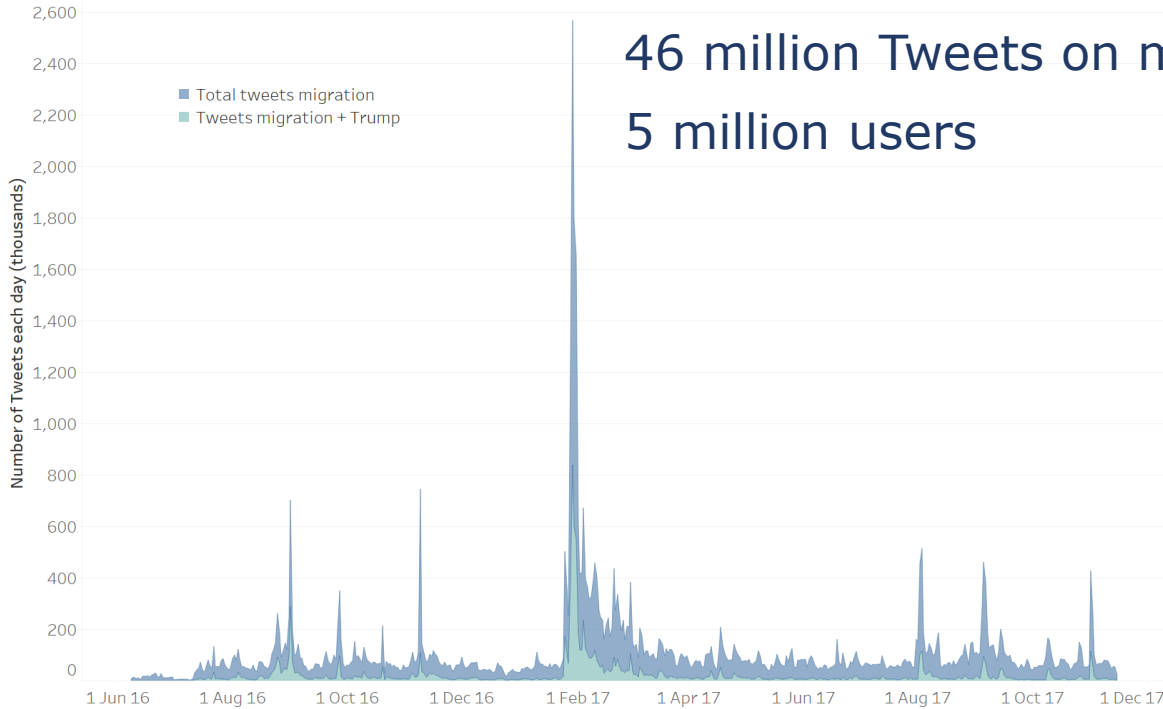


Density of mobile phone traffic with China and areas of highest concentration of migrants from 2011 Census

Sources:

- Italian Census Data &
- Call Detail Records, Telecom Italia

Discourses on migration in Twitter



Propagation of information between clusters of users classified by their ideology

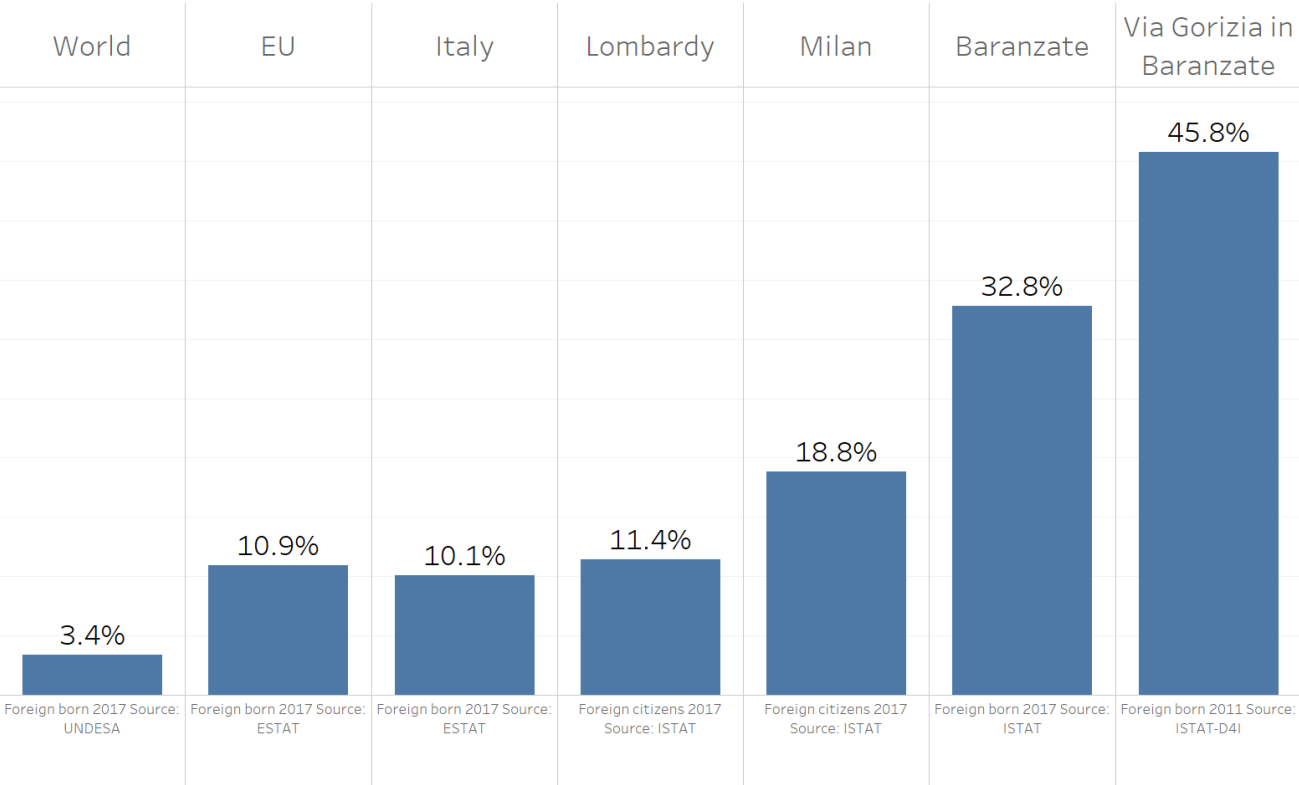
More liberal

More conservative



- Tweets propagating in other clusters
- Tweets propagating in the same cluster

Share of migrants: from world statistics to local statistics



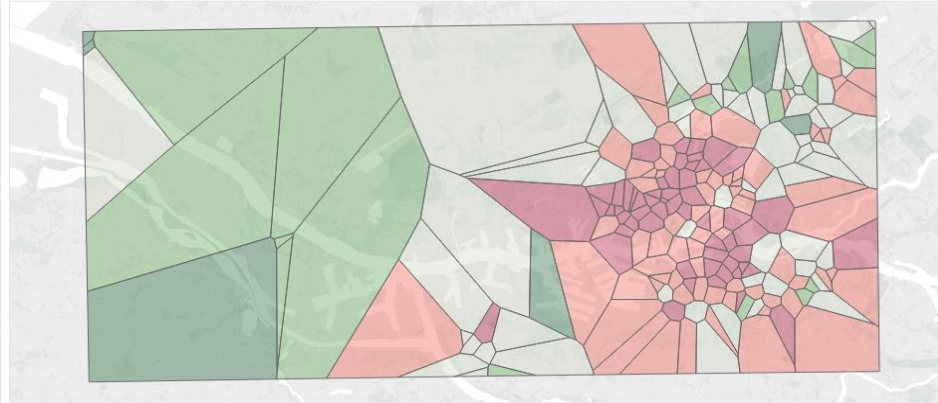
How does the share of migrants in neighborhoods affect politics?

Share of migrants

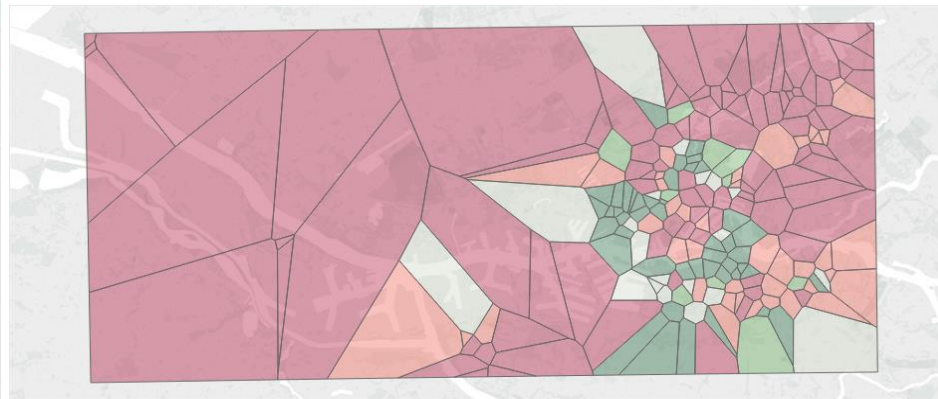


1% 15%

Share of votes for PVV

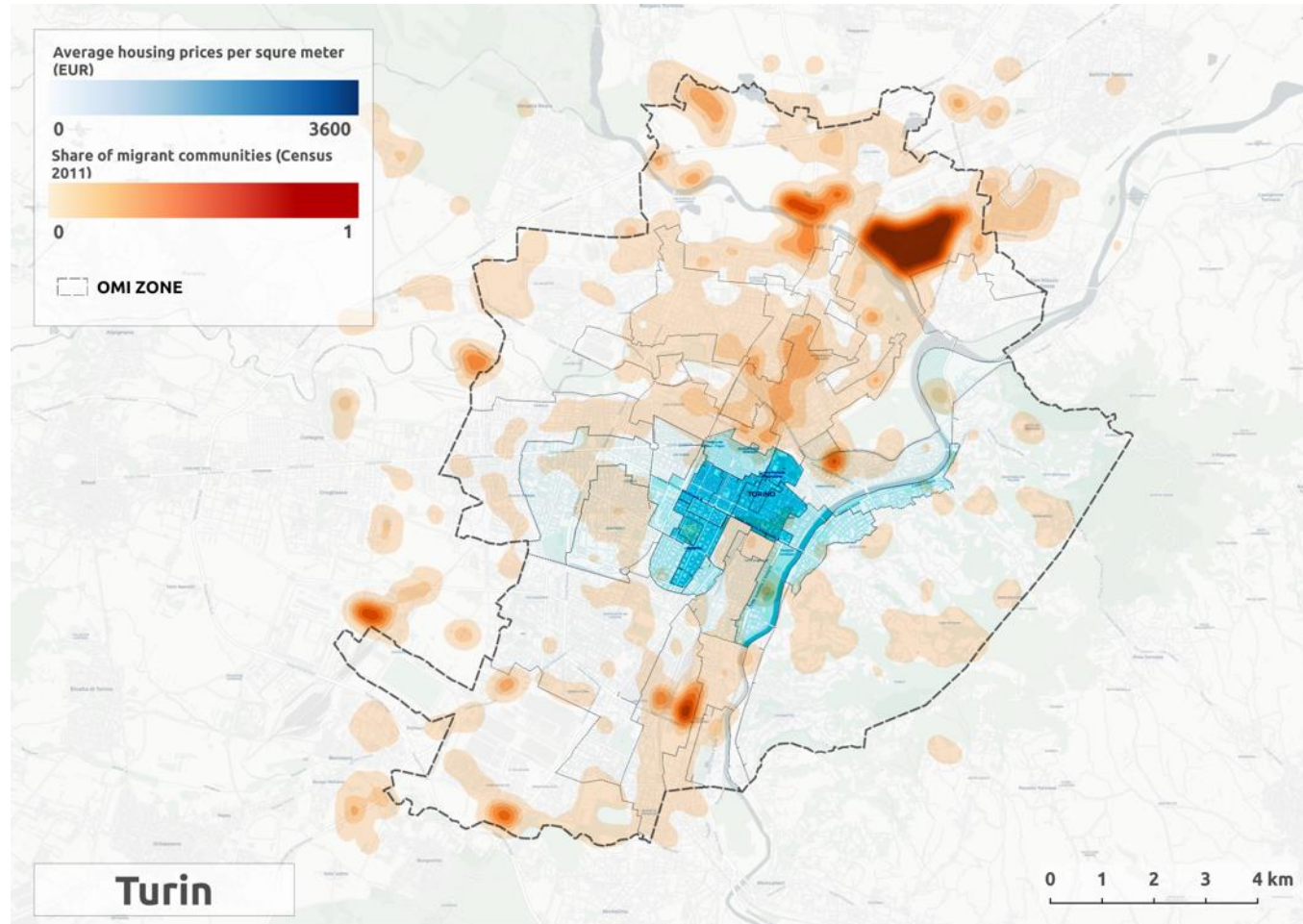


Share of votes for DENK



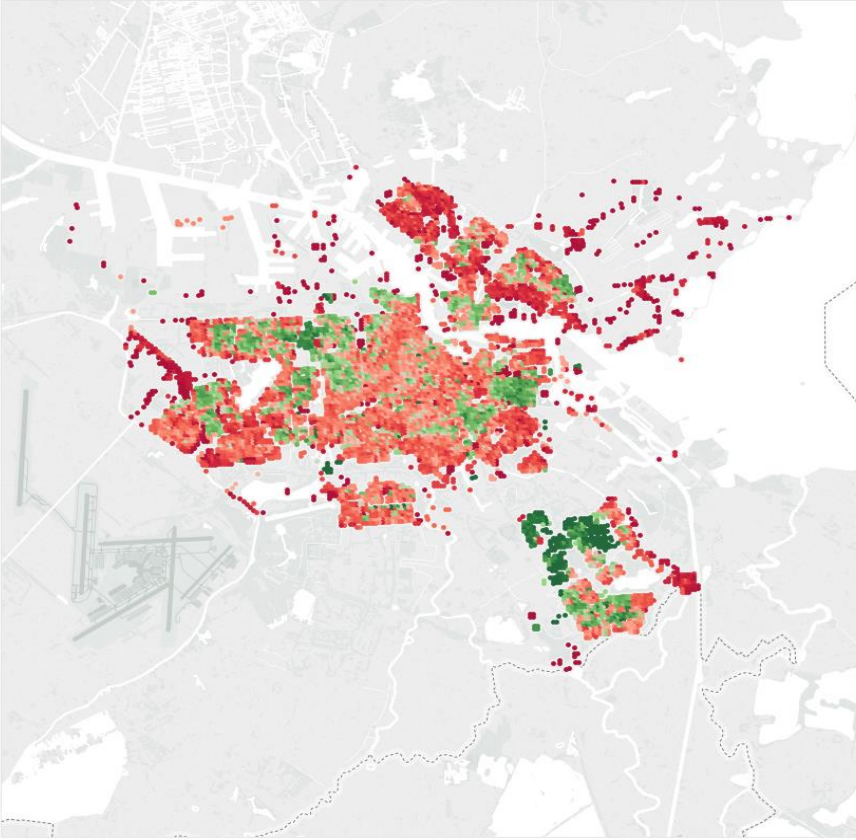
4% 55%

High concentration of migrants and housing market

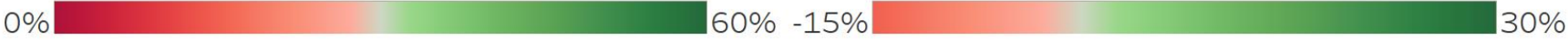
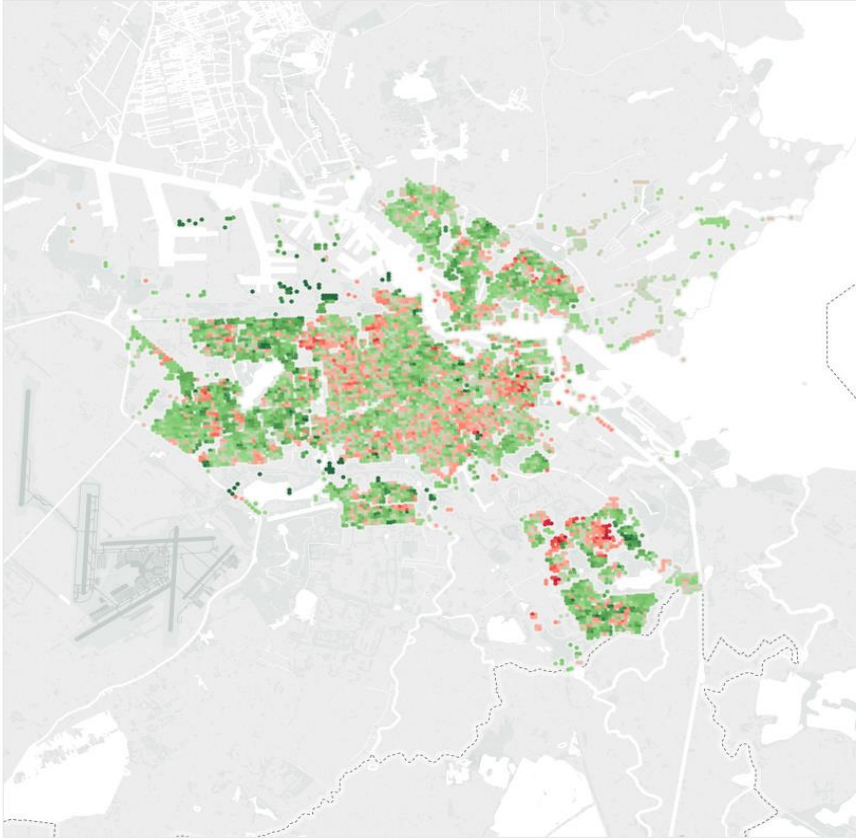


Is residential segregation an inevitable outcome of increasing migration?

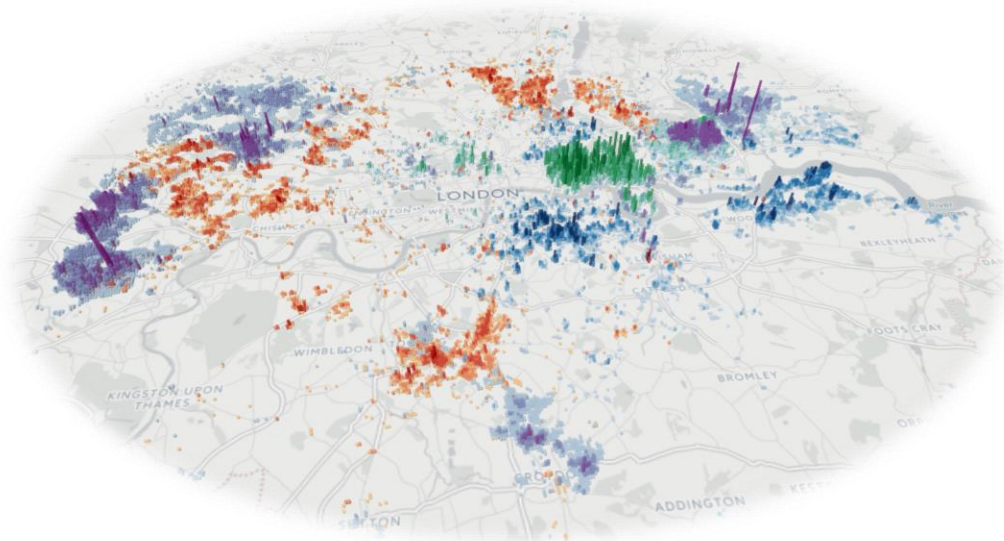
Share of migrants in 2001



Change in the share of migrants 2001 - 2011



D4I - data challenge



Final workshop in Brussels on 27/11/2018

More info and registration at:

<https://bluehub.jrc.ec.europa.eu/datachallenge/>

data science	NamSor Applied Onomastics NamSor SAS ISTI-CNR
diversity	Erasmus University Rotterdam University of Rome La Sapienza Institute for Research into Superdiversity, University of Birmingham London School of Economics and Political Science
housing	Gran Sasso Science Institute
labour market	University College London Migration Policy Centre, European University Institute, Florence The Vienna Institute for International Economic Studies
politics and sentiments	Bocconi University Graduate Institute of International and Development Studies, Geneva, Switzerland Cornell University
public services	Wissenschaftszentrum Berlin für Sozialforschung WZB Berlin Social Science Research Center University of Tartu, Estonia
segregation	Department of Political Sciences, University of Naples Federico II Université Paris 1 Panthéon Sorbonne University of Liverpool Universitat Autònoma de Barcelona Bremen International Graduate School of Social Sciences Institute of Geography and Spatial Planning-University of Lisbon
transport	Dublin Institute of Technology National Technical university of Athens Greece

Conclusions

- Data can help balancing the public debate around an often misperceived theme such as migration
- Policy advice and knowledge management for migration require full awareness of data opportunities and limitations
- Data timeliness, disaggregation by time, space and attributes can be addressed through research and non-traditional sources



Any questions?

You can find us at

@M_Vespe

michele.vespe@ec.europa.eu

EC-kcmd@ec.europa.eu

<https://bluehub.jrc.ec.europa.eu/migration/app>