

ADES

Airports as Drivers of Economic Success in Peripheral Regions

Targeted Analysis 2013/2/17

Annex 3.3 Maps covering the Province of Savona* | Version 28/02/2013

*In order to make stakeholder regions more comparable all cartographic materials for the Province of Savona have been produced according to the NUTS 2 classification which, in this case, corresponds to Liguria



This report presents the final results of a Targeted Analysis conducted within the framework of the ESPON 2013 Programme, partly financed by the European Regional Development Fund.

The partnership behind the ESPON Programme consists of the EU Commission and the Member States of the EU27, plus Iceland, Liechtenstein, Norway and Switzerland. Each partner is represented in the ESPON Monitoring Committee.

This report does not necessarily reflect the opinion of the members of the Monitoring Committee.

Information on the ESPON Programme and projects can be found on www.espon.eu

The web site provides the possibility to download and examine the most recent documents produced by finalised and ongoing ESPON projects.

This basic report exists only in an electronic version.

© ESPON & Department of Sciences for Architecture (DSA), University of Genoa, 2012

Printing, reproduction or quotation is authorised provided the source is acknowledged and a copy is forwarded to the ESPON Coordination Unit in Luxembourg.

ISBN 978-2-919777-29-7

List of authors

Department of Sciences for Architecture (DSA) – University of Genoa, Italy
Professor Maria Linda Falcidieno, Full Professor of Drawing, Director of DSA
Prof. Arch. Mosè Ricci, Full Professor of Urban Design
Dr. Arch. Federica Alcozer
Arch. Sara Favargiotti, Researcher
Arch. Romina Ghezzi
Arch. Beatrice Moretti

BAK Basel Economics, AG, Switzerland
Prof. Dr. Urs Müller, Director and Chief Economist
Christoph Strueby, Research Associate
Larissa Müller, Research Associate

Knowledge and Innovation Intermediaries Consulting Ltd (KiNNO), Greece
Yiannis Geragotellis, Managing Partner
Dr. Konstantinos Fouskas
Charis Loupassi

Jyväskylä University School of Business and Economics, Finland
Professor Hannu Tervo
Dr. Kirsi Mikkala, Research coordinator
Kari Itkonen, Researcher
Pekka Pyöry, Research assistant

With local stakeholders input by:

Arch. Antonio Schizzi, Provincia di Savona, Italy

Stathis Papachristopoulos, Vice Director for Regional Development Funds, Greece

Laura Ahonen, Project Manager, European Officer City of Jyväskylä, Finland

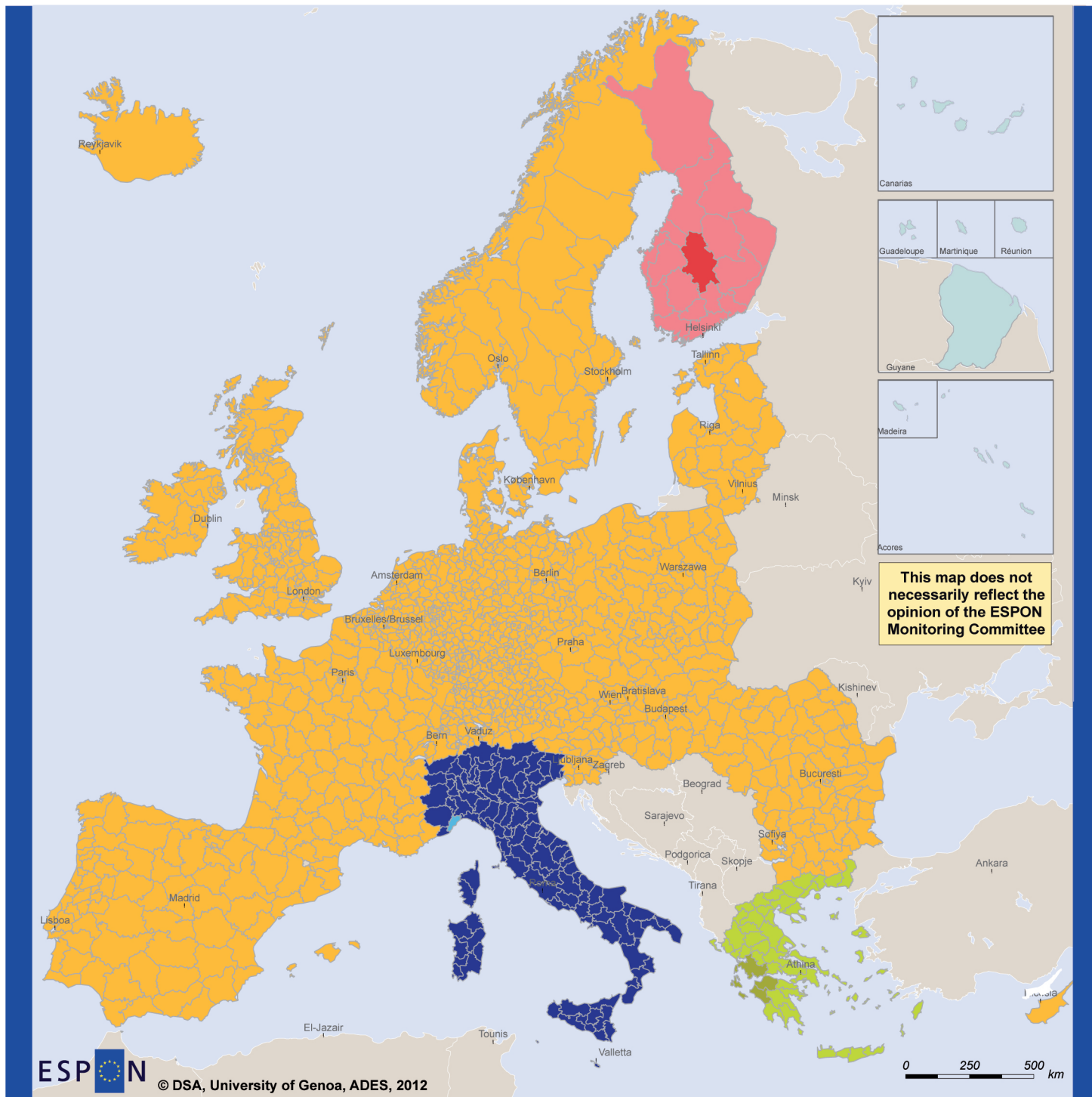
With further input by:

Tietoykkönen, Finland

Table of figures

Geographical location of stakeholder regions	5
Geographical location of regional airports in the case study regions	6
Surface, population and density in the case study regions	7
Airports in Italy	8
Accessibility by airports at the Province of Savona.....	9
Accessibility by highways to airports at the Province of Savona.....	10
Accessibility by secondary roads to airports at the Province of Savona	11
Accessibility by intercity trains to airports at the Province of Savona.....	12
Accessibility by regional trains to airports at the Province of Savona	13
Harbours at the Province of Savona	14
Beaches with blue flags at the Province of Savona	15
Natural parks and reserves at the Province of Savona.....	16
Beaches with orange flags at the Province of Savona.....	17
Industrial districts at the Province of Savona	18
Number of companies and employees at the Province of Savona.....	19
Shopping malls at the Province of Savona	20
Commercial import-export at the Province of Savona.....	21
Research institutes at the Province of Savona	22
Universities at the Province of Savona	23
Sport complexes at the Province of Savona	24
Hospitals at the Province of Savona	25
Comprehensive map for the Province of Savona.....	26
Villanova d'Albenga airport at the Province of Savona	27
Strategy of airport network at Villanova d'Albenga airport	29
REuse strategy at Villanova d'Albenga airport: industrial airport	30
REuse strategy at Vilanova d'Albenga airport: EcoAgriport.....	31
Villanova d'Albenda airport masterplan: logistic airport.....	32

ADES Stakeholder Regions in Europe



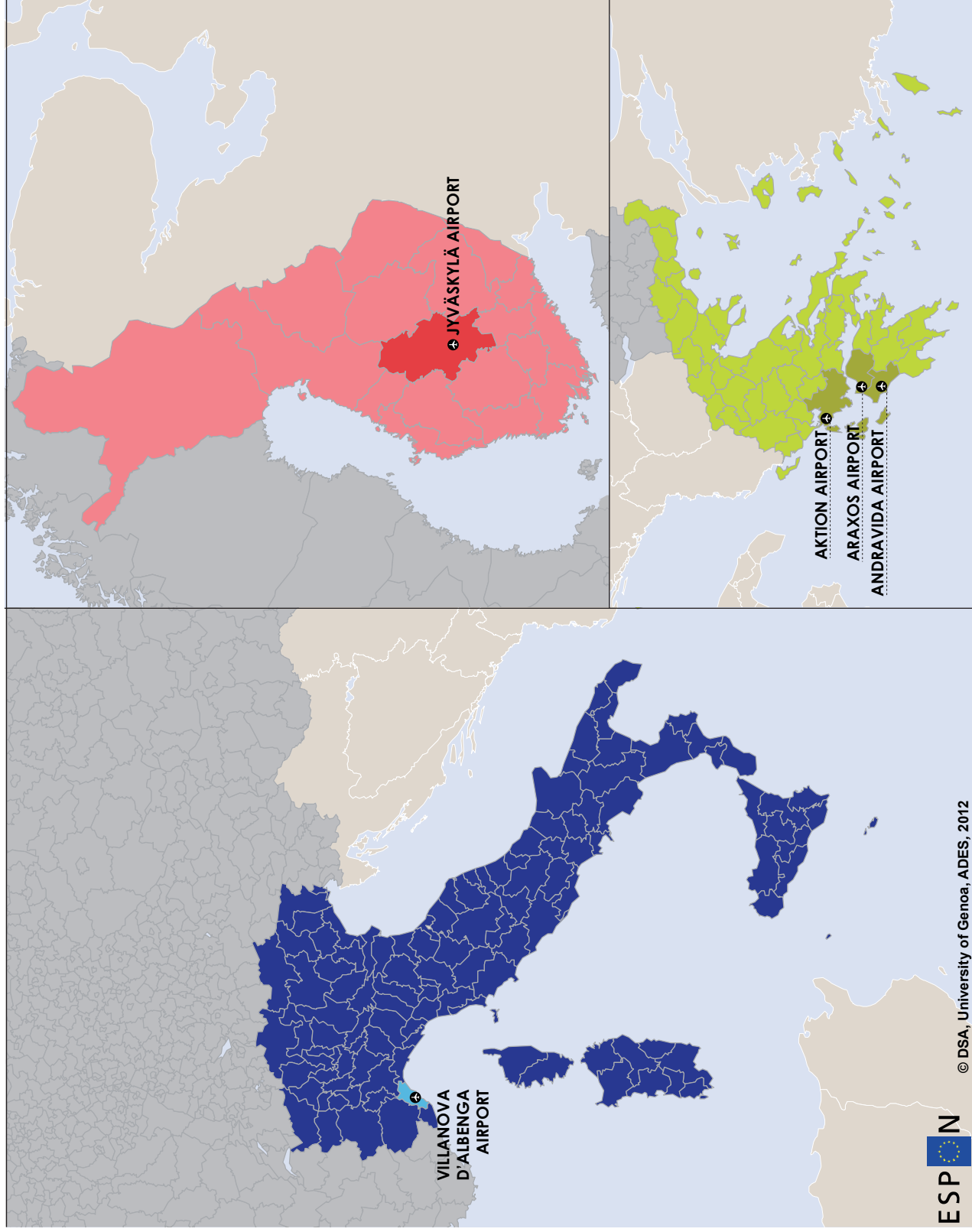

 EUROPEAN UNION
 Part-financed by the European Regional Development Fund
 INVESTING IN YOUR FUTURE

Regional level: NUTS 3
 Source: <http://philcarto.free.fr/>
 Origin of data: European map
 © EuroGeographics Association for administrative boundaries

Legend

- Finland
- Central Finland
- Greece
- Western Greece
- Italy
- Provincia di Savona



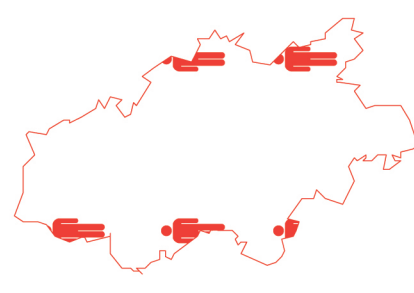






ADES Stakeholder Airports



Regional level: NUTS 3
 Source: <http://phicarto.free.fr/>
 Origin of data: National Maps
 © EuroGeographics Association for administrative boundaries

EUROPEAN UNION
 Part-financed by the European Regional Development Fund
 INVESTING IN YOUR FUTURE

Comparison of surface, population and density of Stakeholder Regions

SURFACE km ²	POPULATION inh.	DENSITY inh./km ²
 <p>19950 km²</p>	 <p>274 000 inh.</p>	 <p>13,65 inh./km²</p>
 <p>11350 km²</p>	 <p>741 282 inh.</p>	 <p>66,37 inh./km²</p>
 <p>1545 km²</p>	 <p>287 551 inh.</p>	 <p>186,12 inh./km²</p>

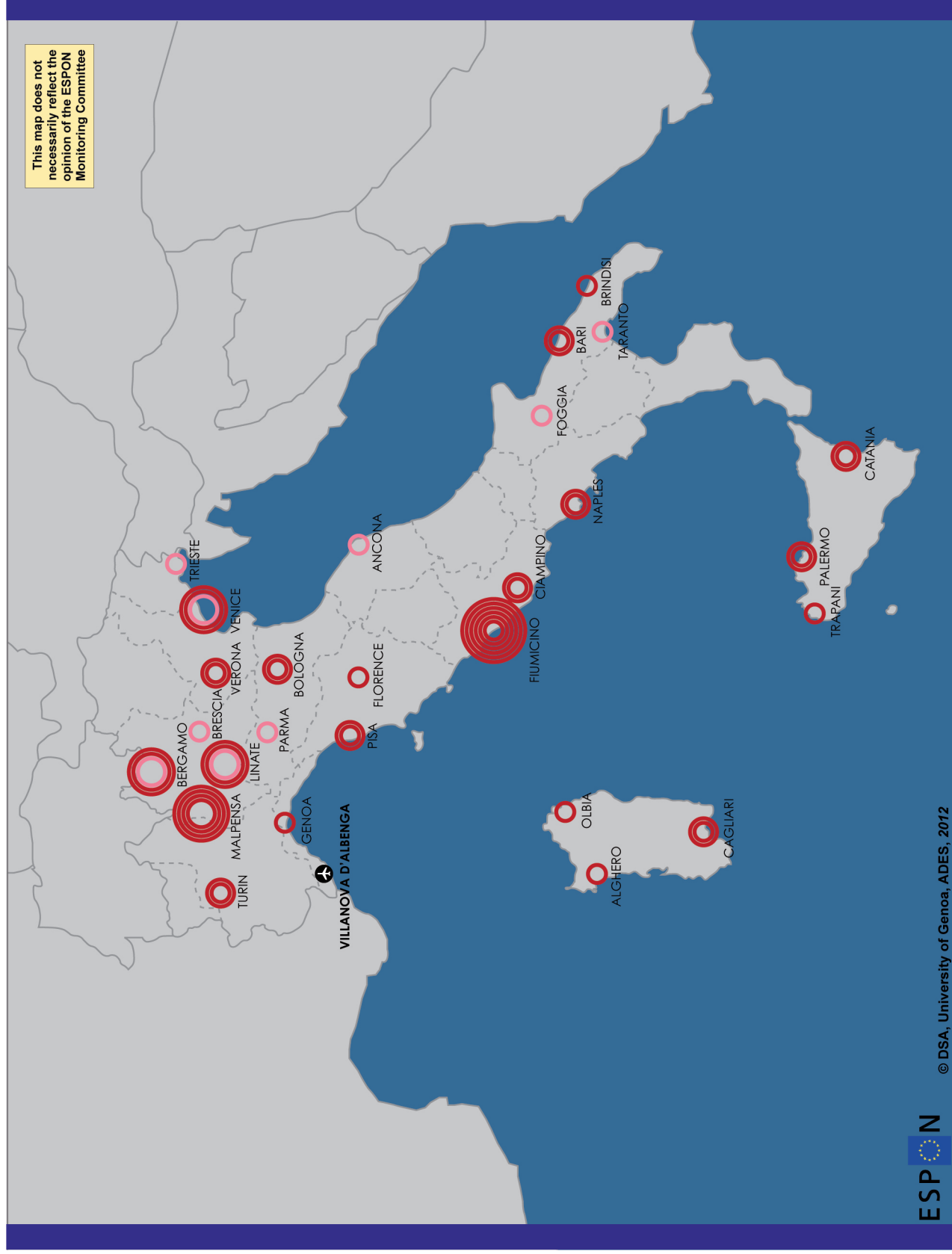
Legend

Central Finland

Western Greece

Provincia di Savona

Airports in Italy



MOTORWAY

Greece 553 km
Finland 779 km

Italy 6.661 km

RAILWAYS NETWORK

Greece 2.571 km
Finland 8.816 km

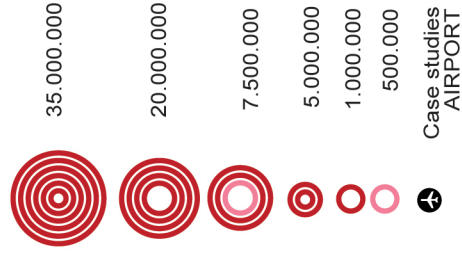
Italy 24.179 km

AIRPORTS

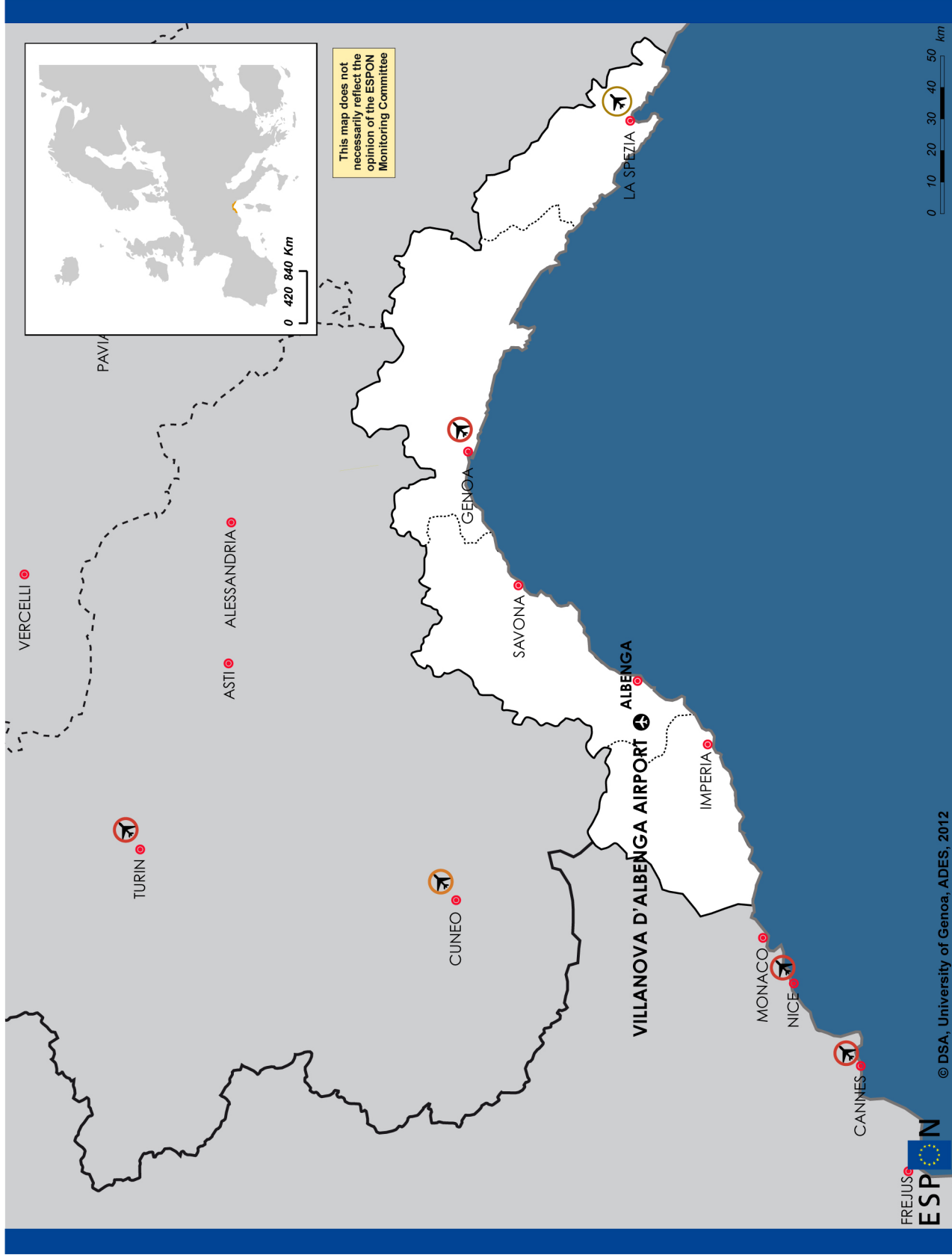
Greece 38
Finland 22
Italy 27

Legend

Passengers in 2010

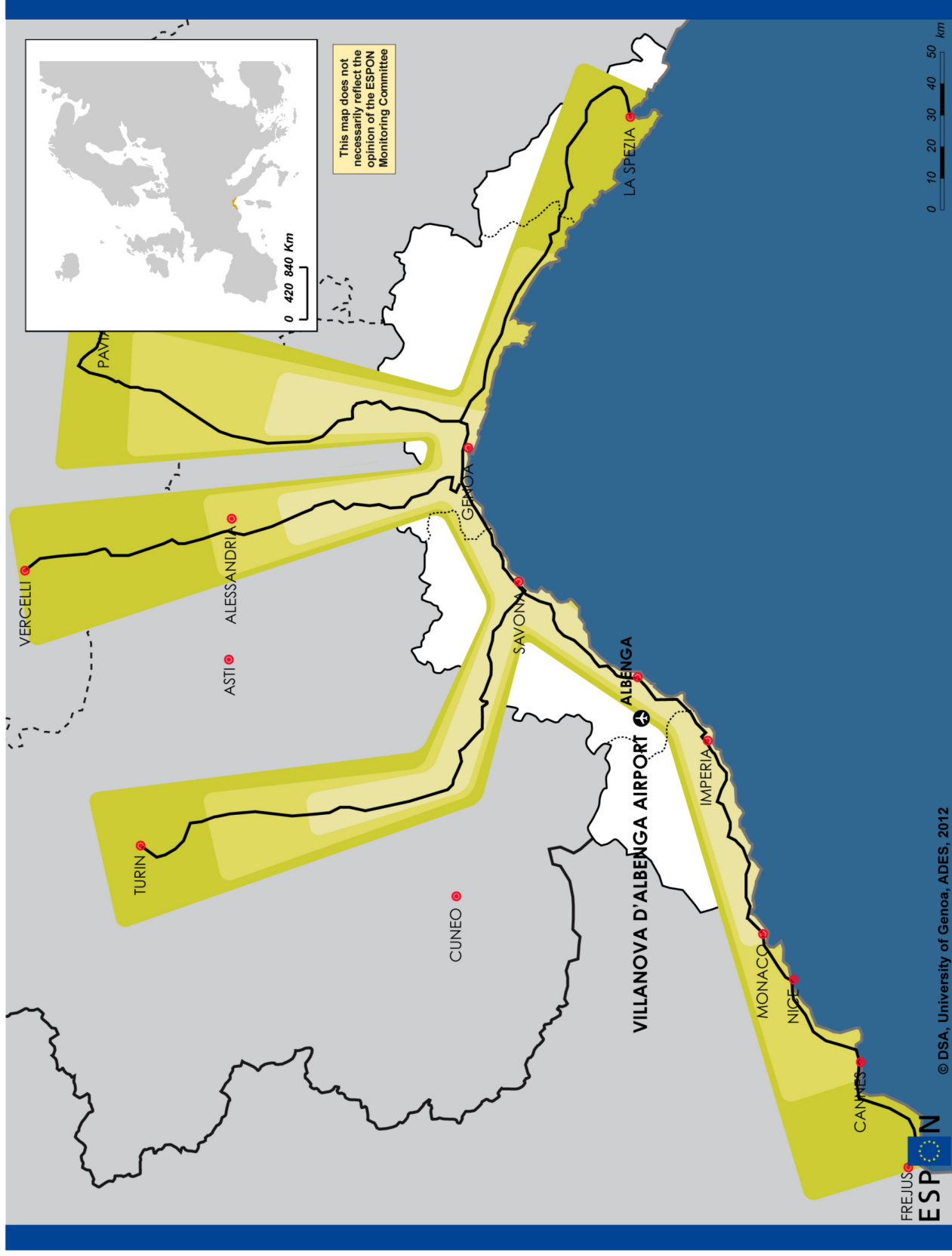


Accessibility by Airports in Province of Savona

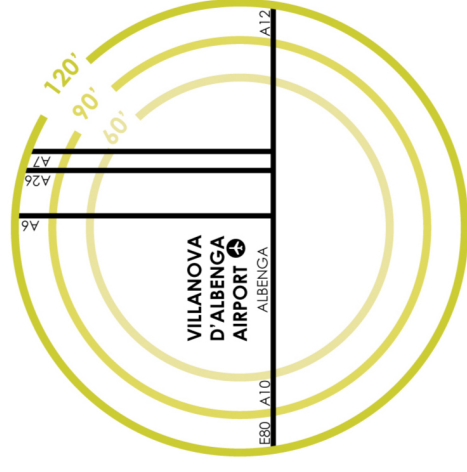


FREJUS
ESPON
© DSA, University of Genoa, ADES, 2012

Accessibility by highways to airports in Province of Savona



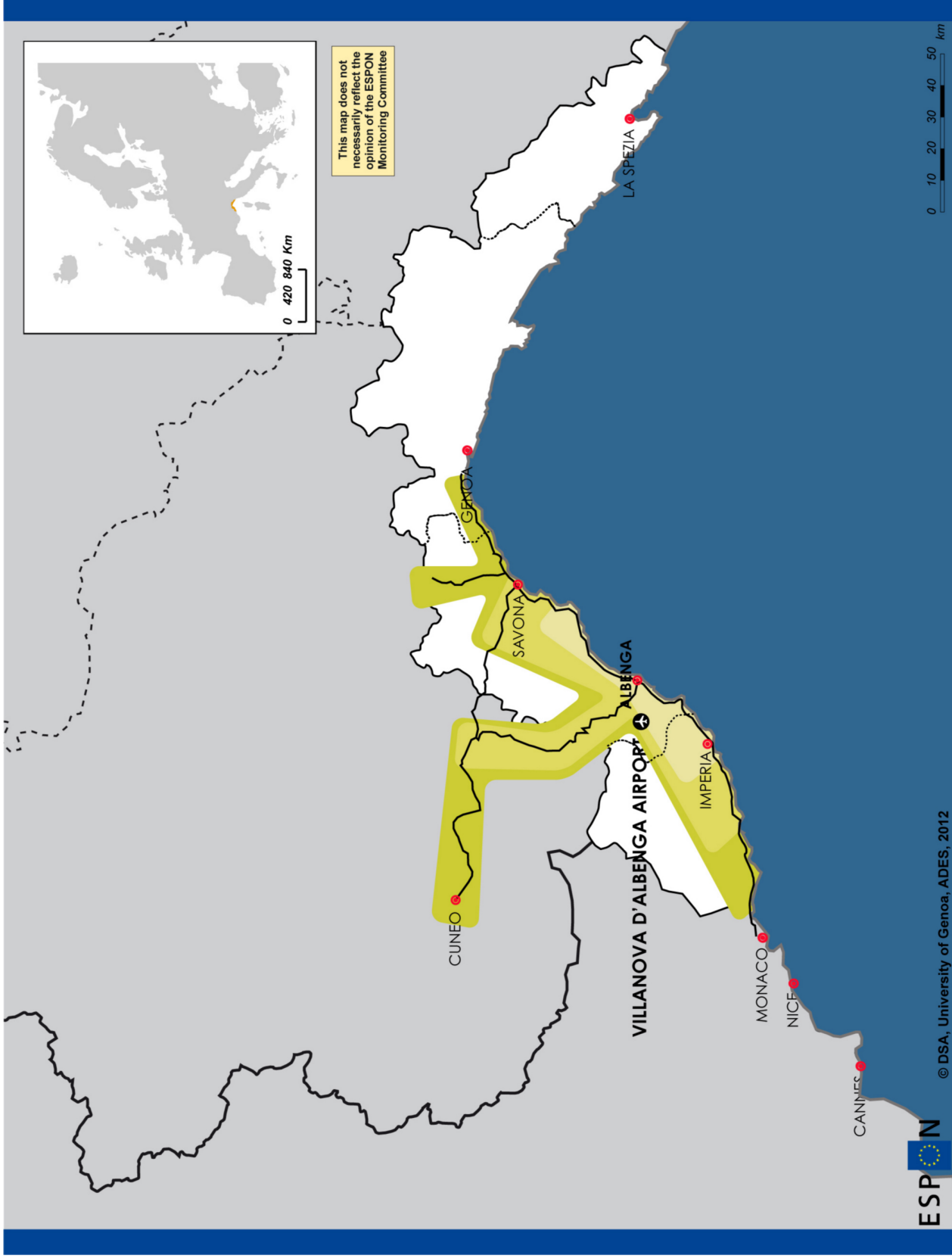
Diagram



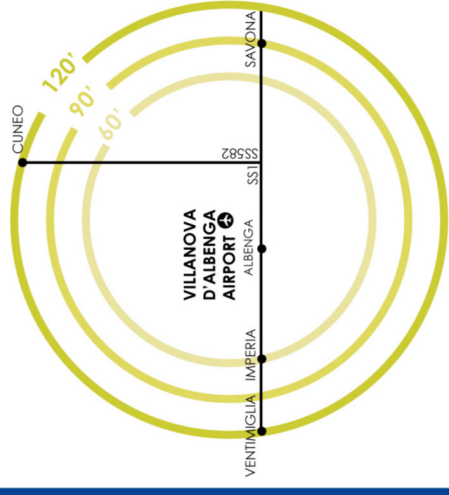
Legend

- Existent highways
- 60-90-120 minutes

Accessibility by secondary roads to airports in Province of Savona



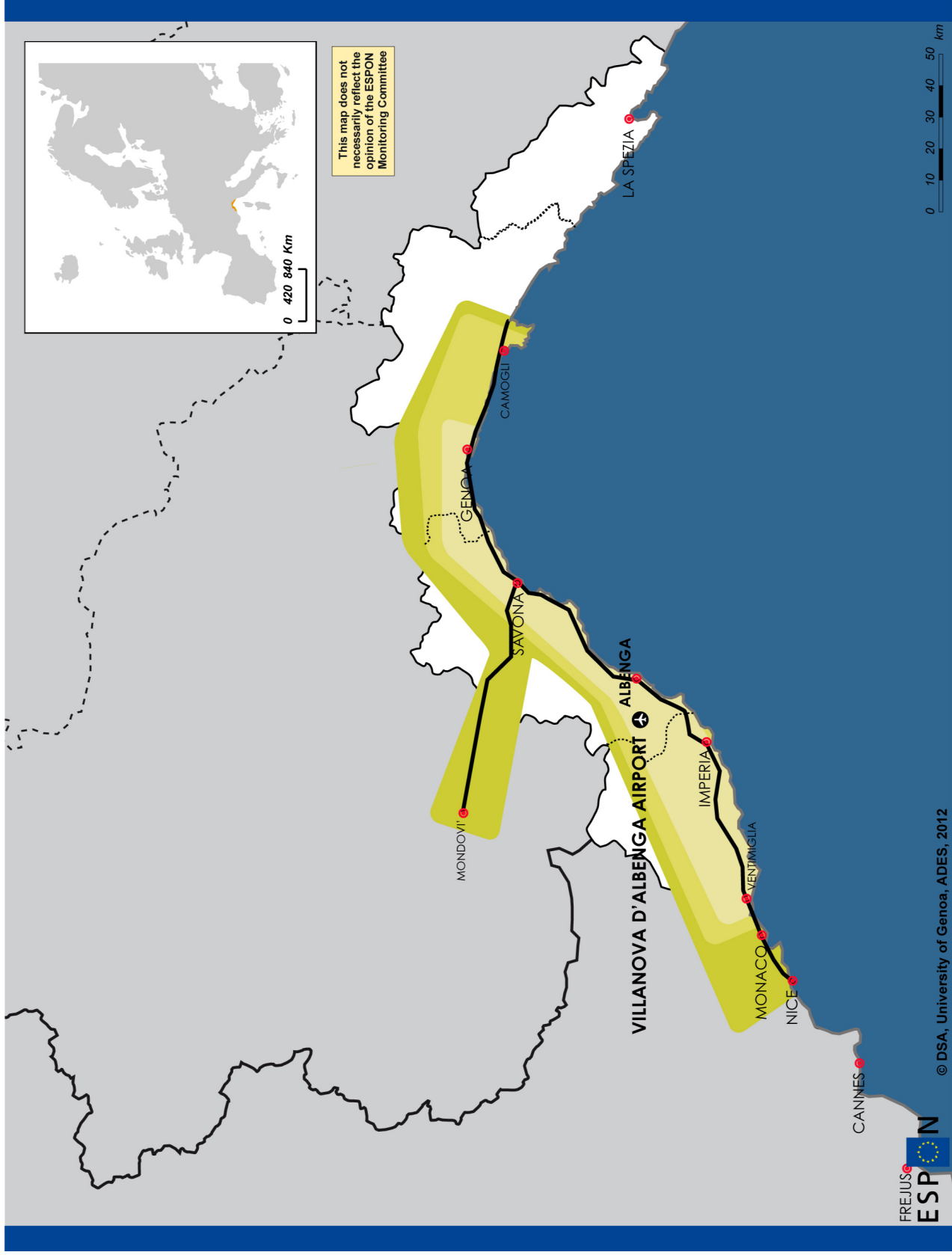
Diagram



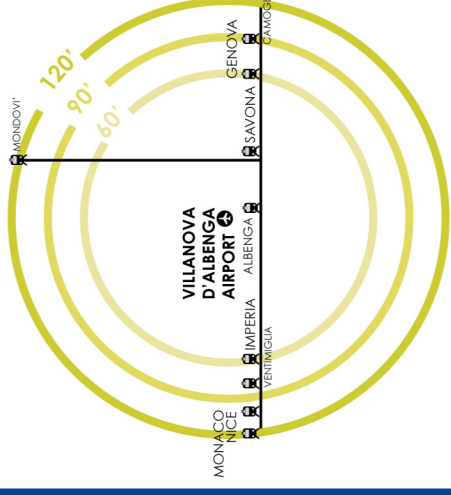
Legend

- Existing road
- 60-90-120 minutes

Accessibility by Intercity trains to airports in Province of Savona



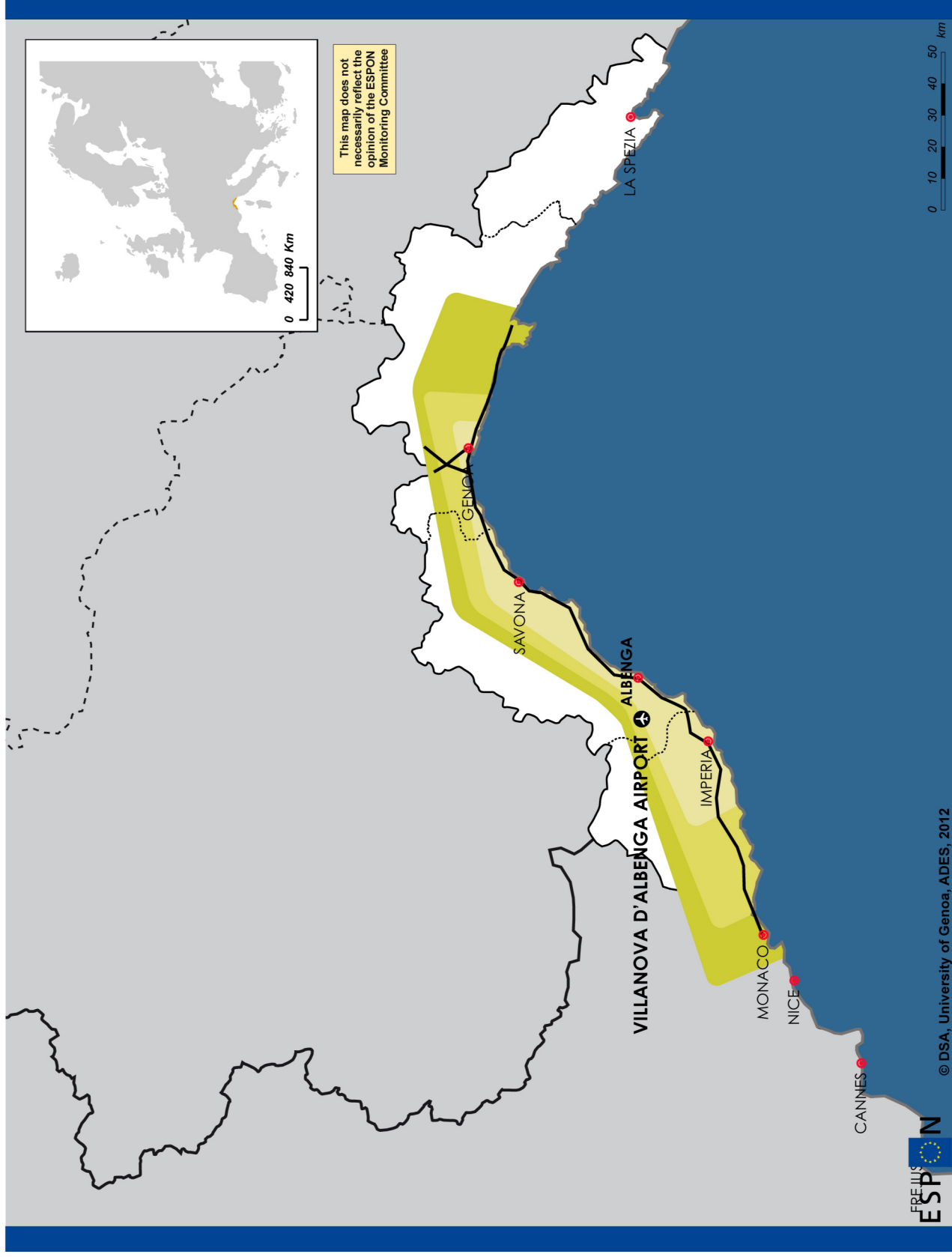
Diagram



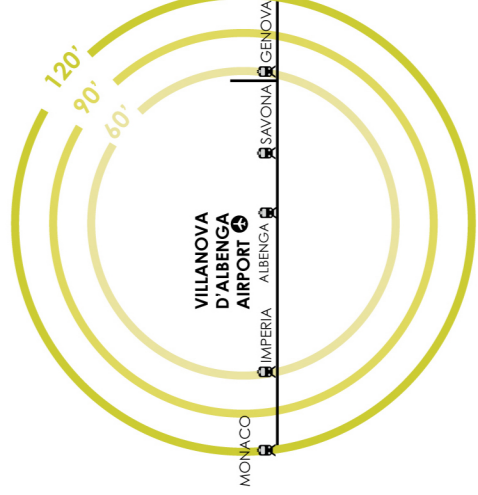
Legend

- Existing railway
- 60-90-120 minutes

Accessibility by regional trains to airports in Province of Savona



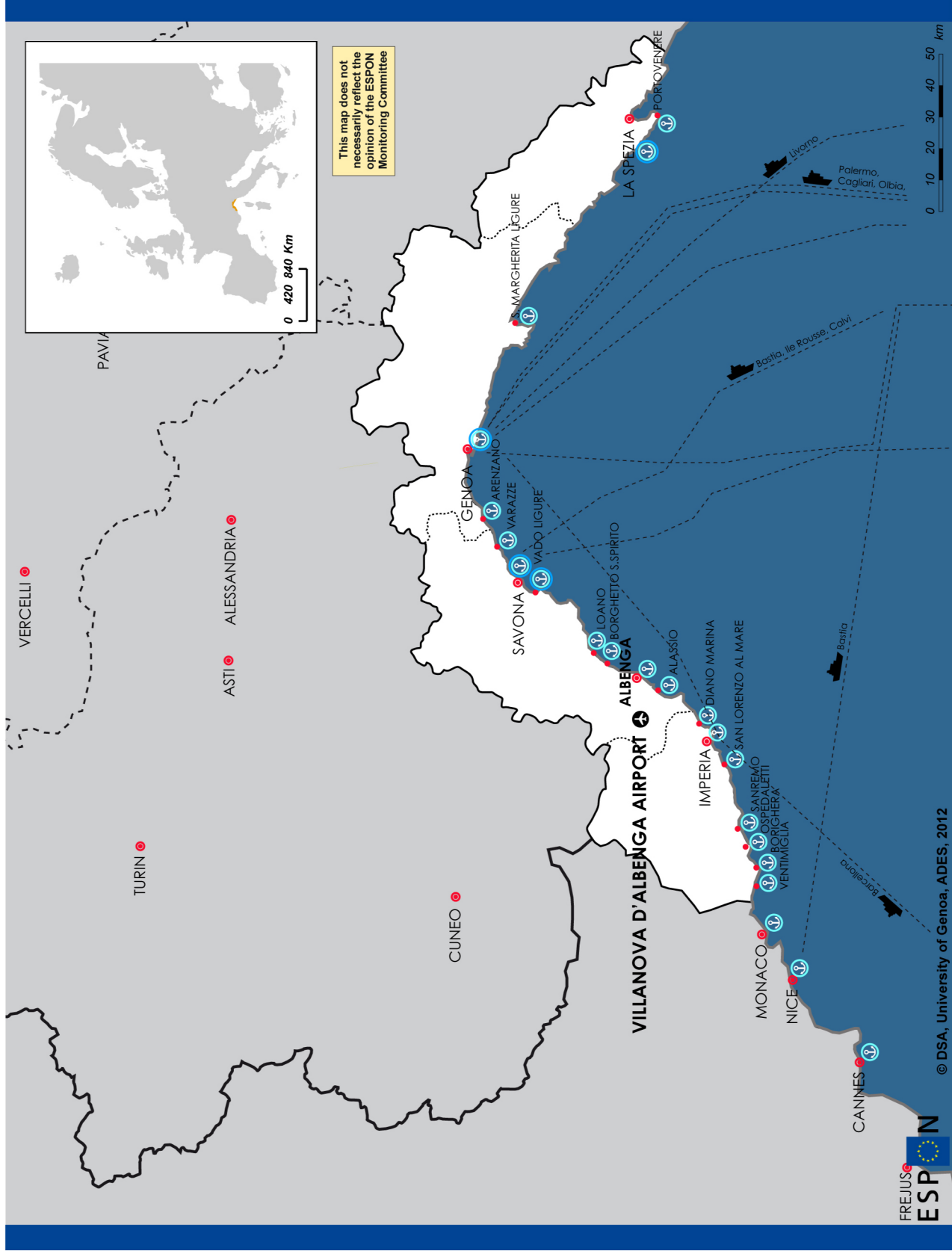
Diagram



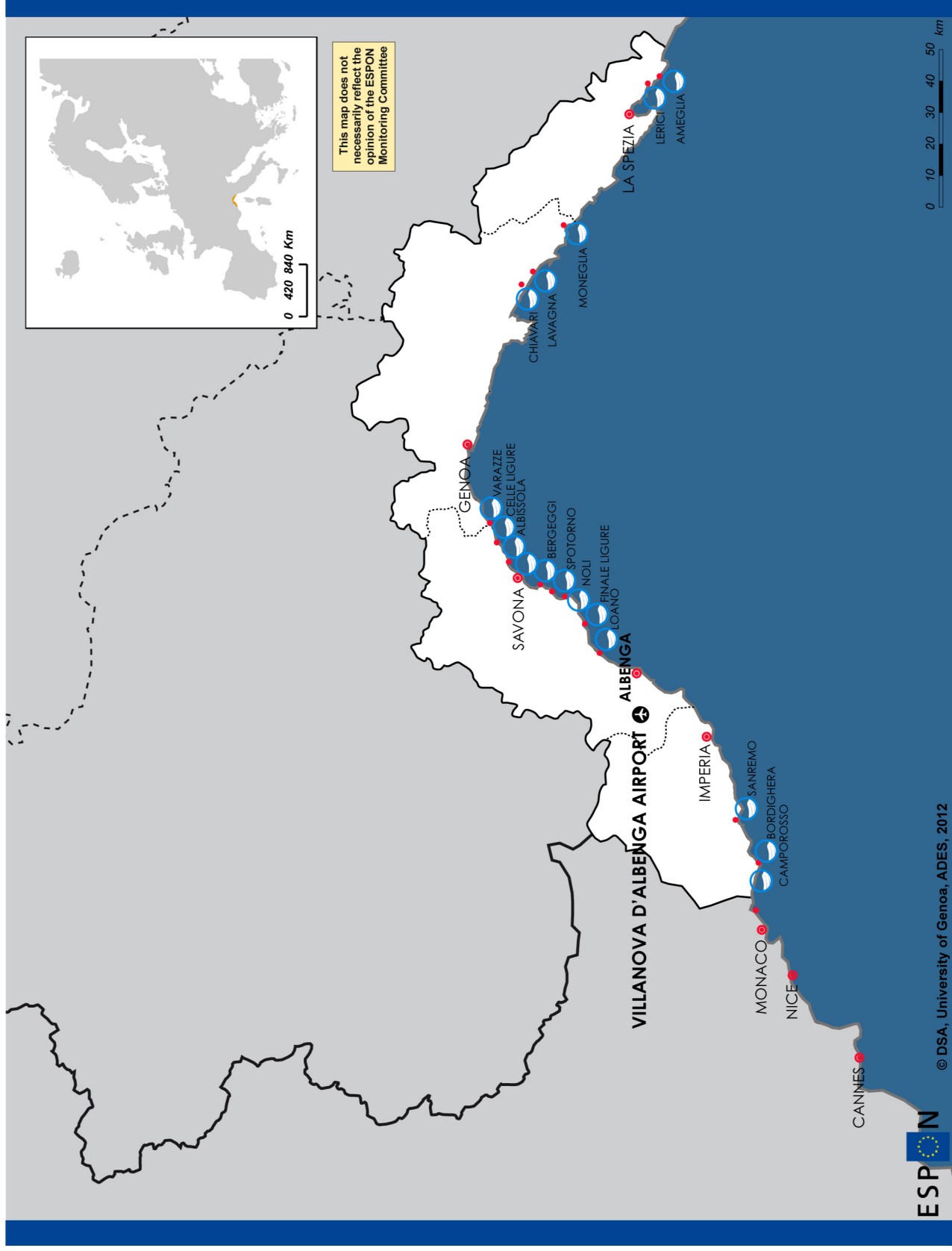
Legend

- Existing railway
- 60-90-120 minutes

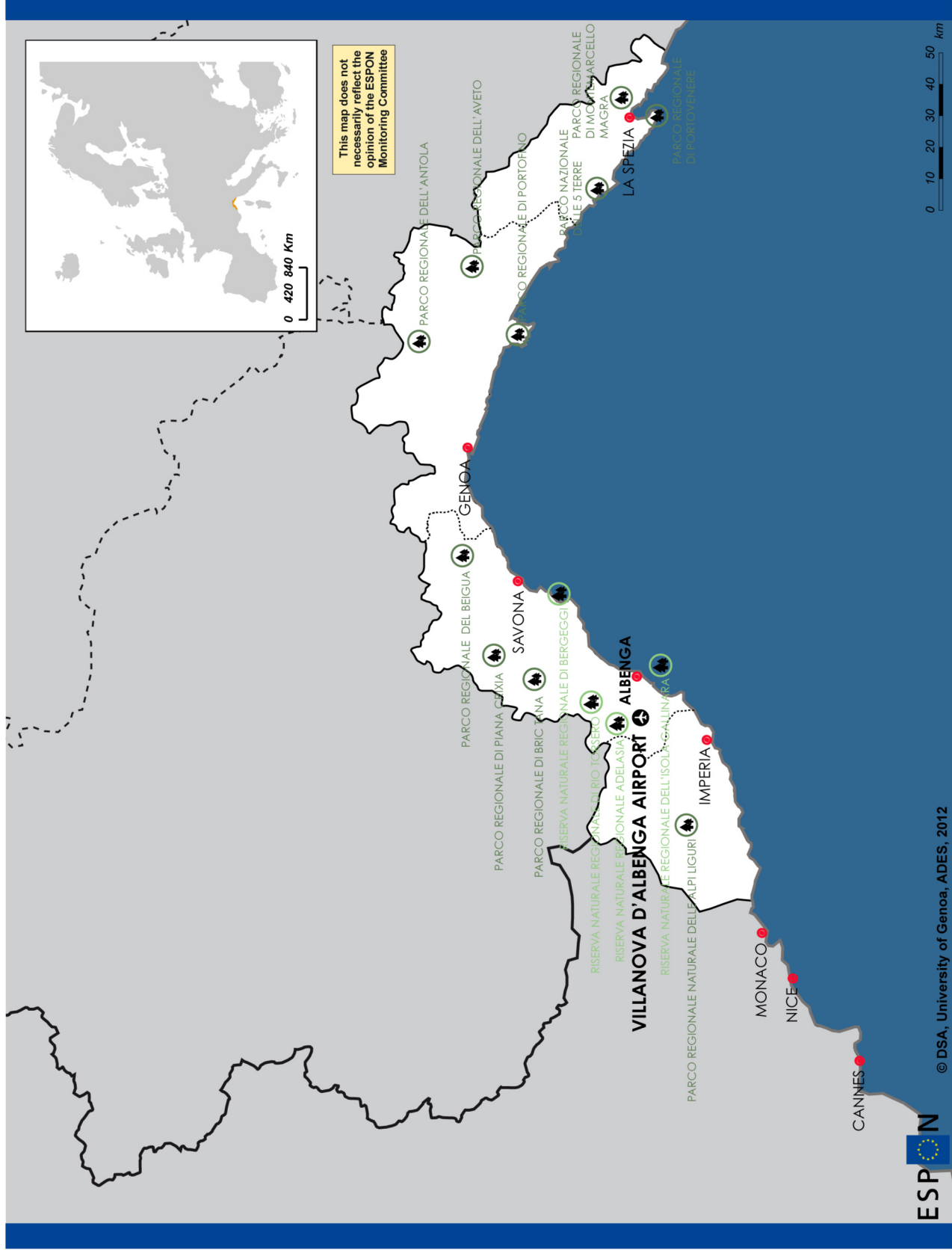
Harbours in Province of Savona



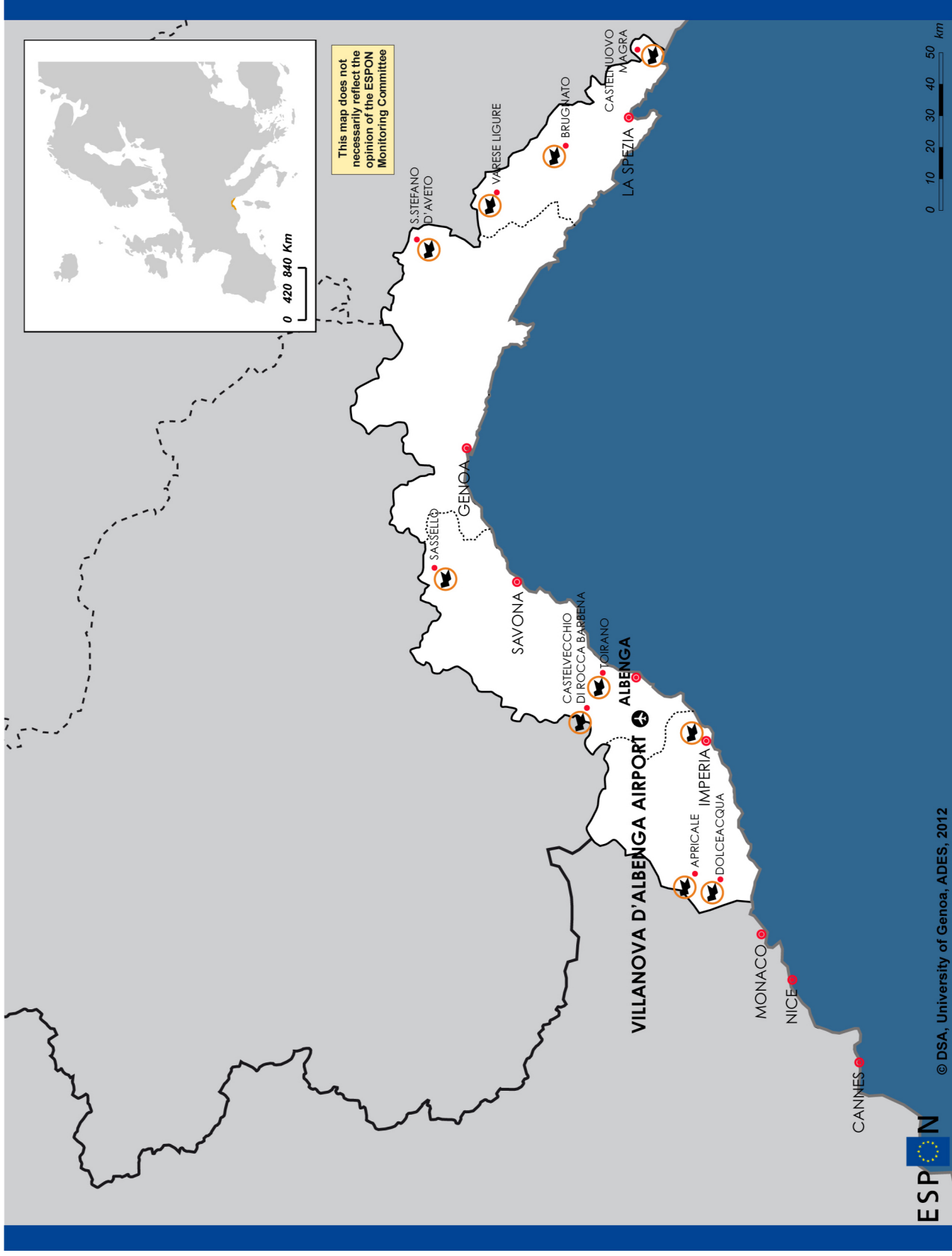
Blue Flags in Province of Savona



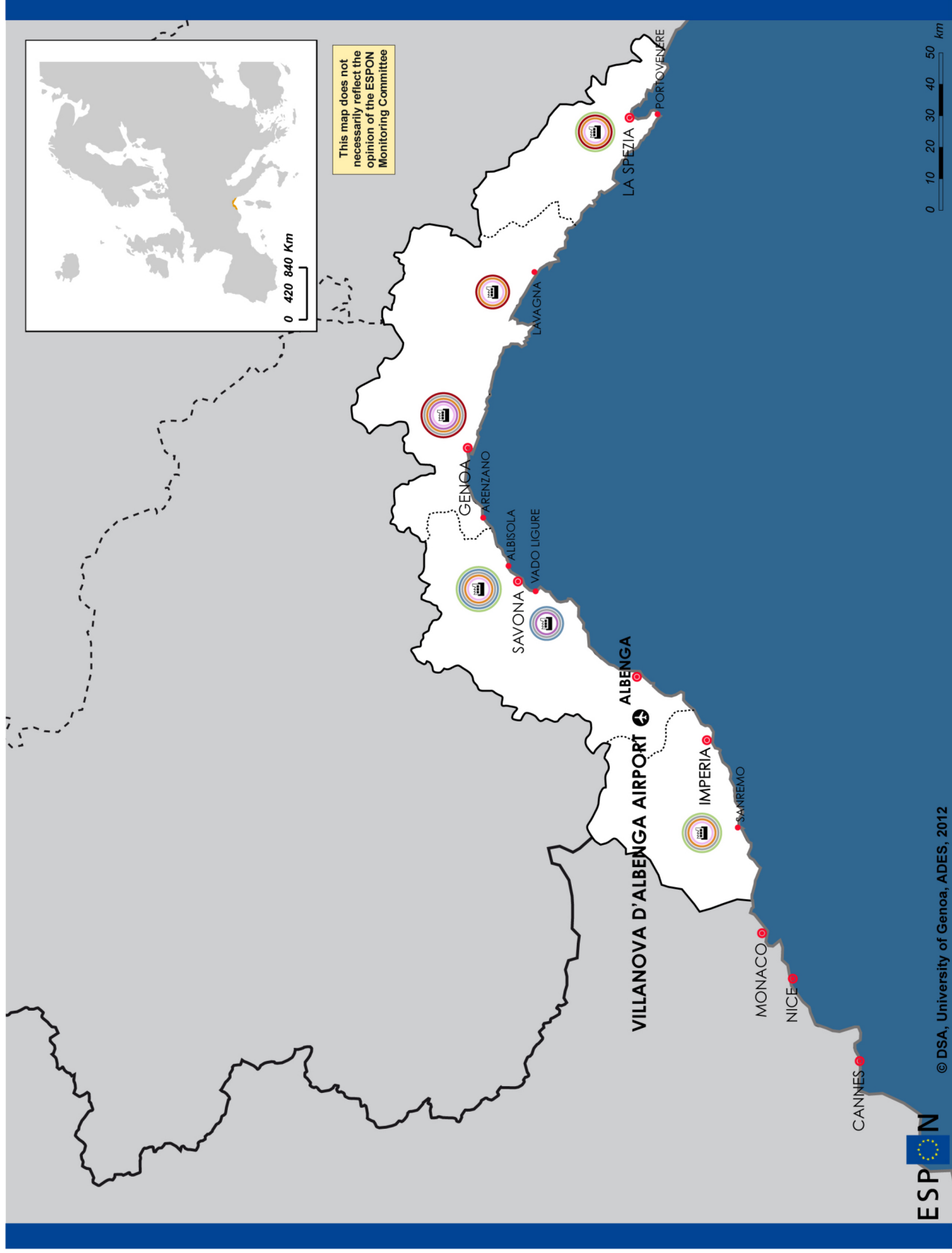
Natural parks and reserves in Province of Savona



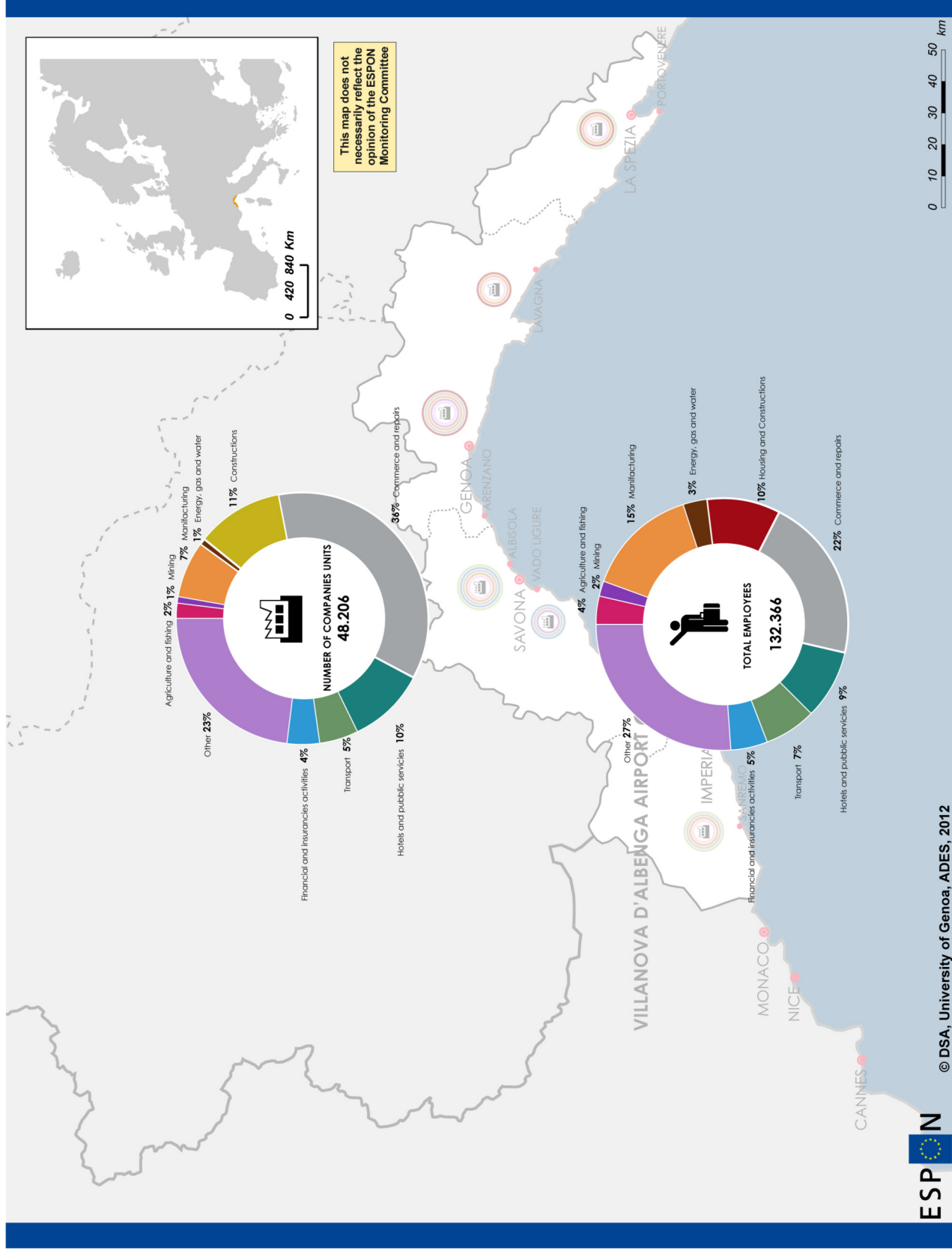
Orange Flags in Province of Savona



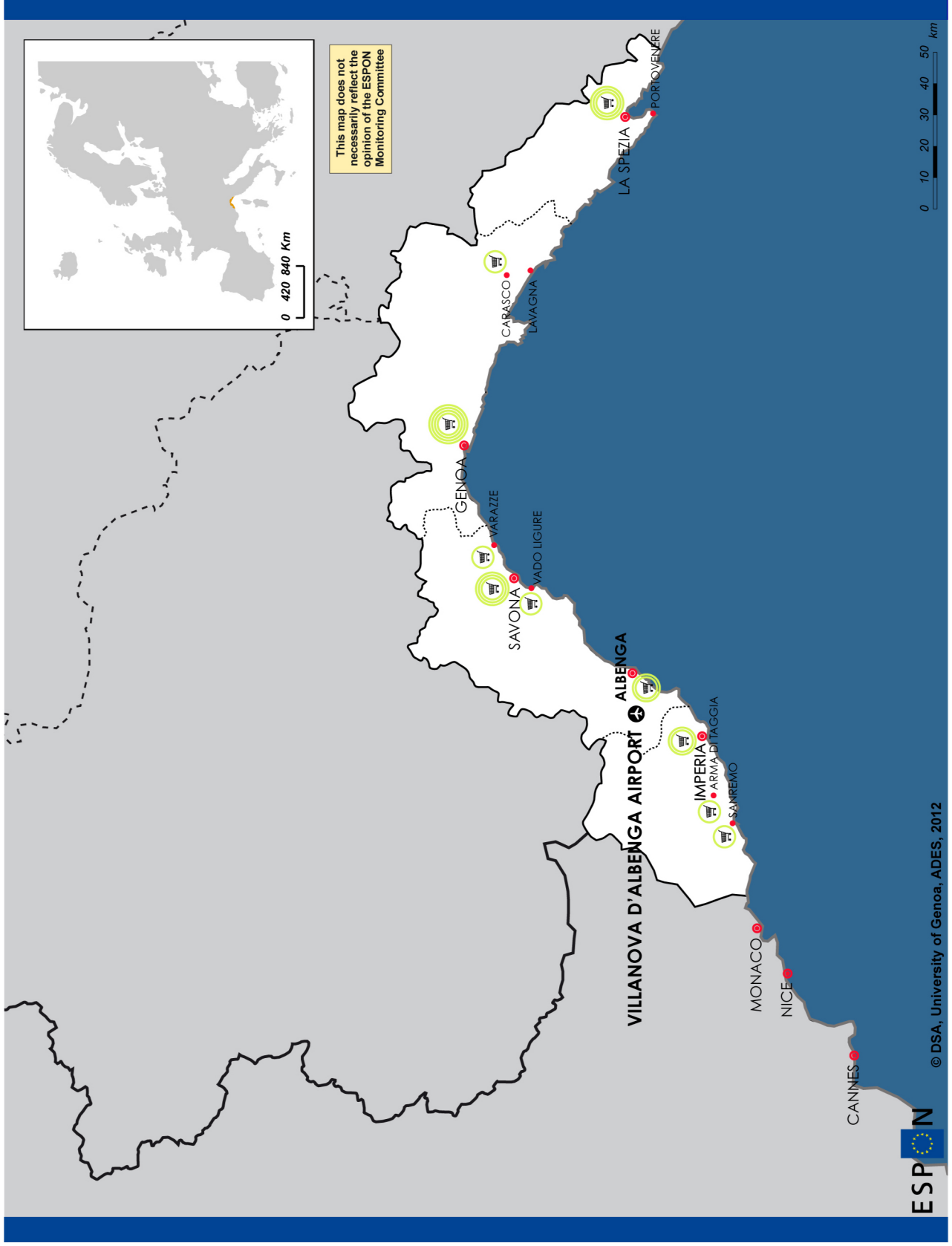
Industrial districts in Province of Savona



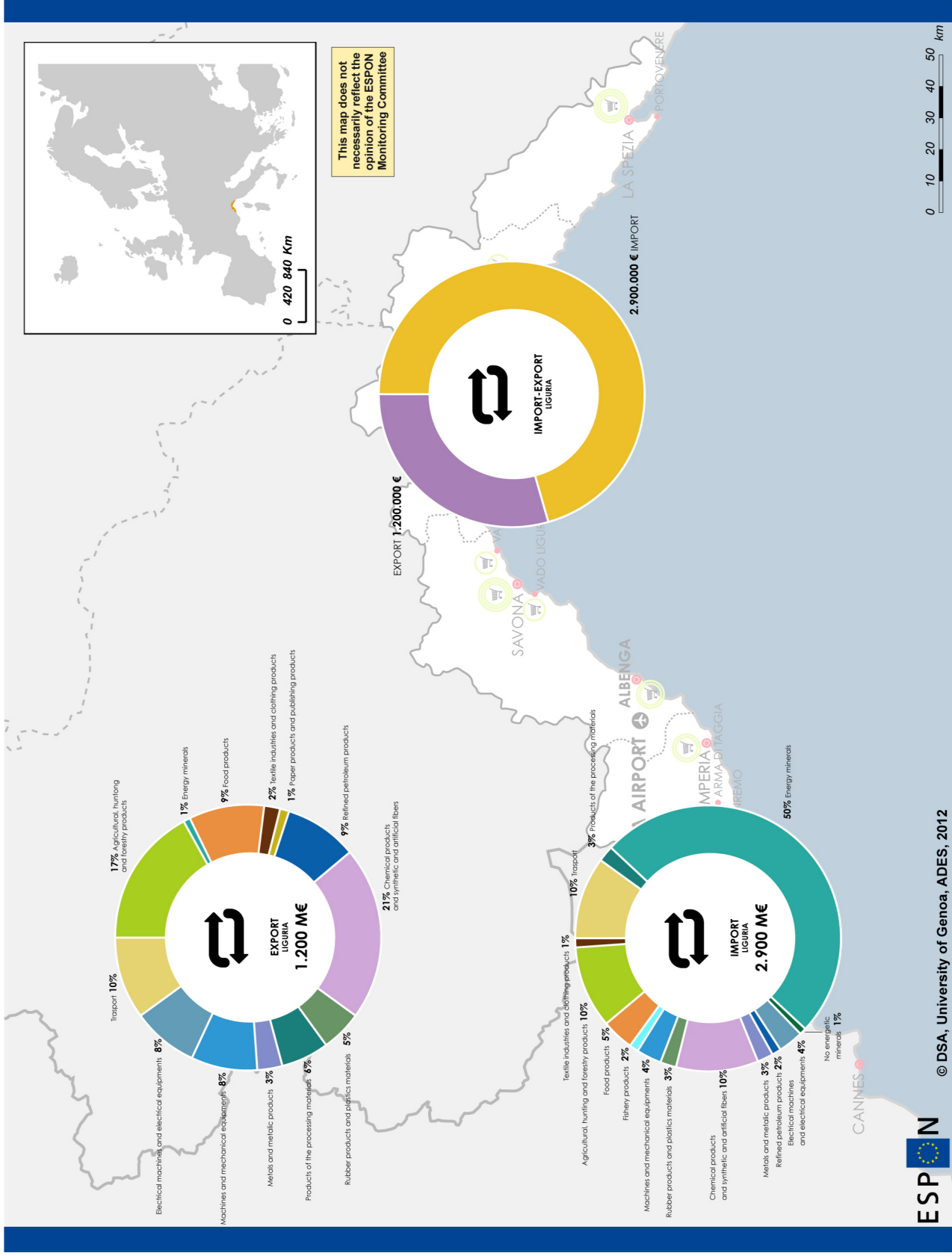
Number of companies and employees in Province of Savona



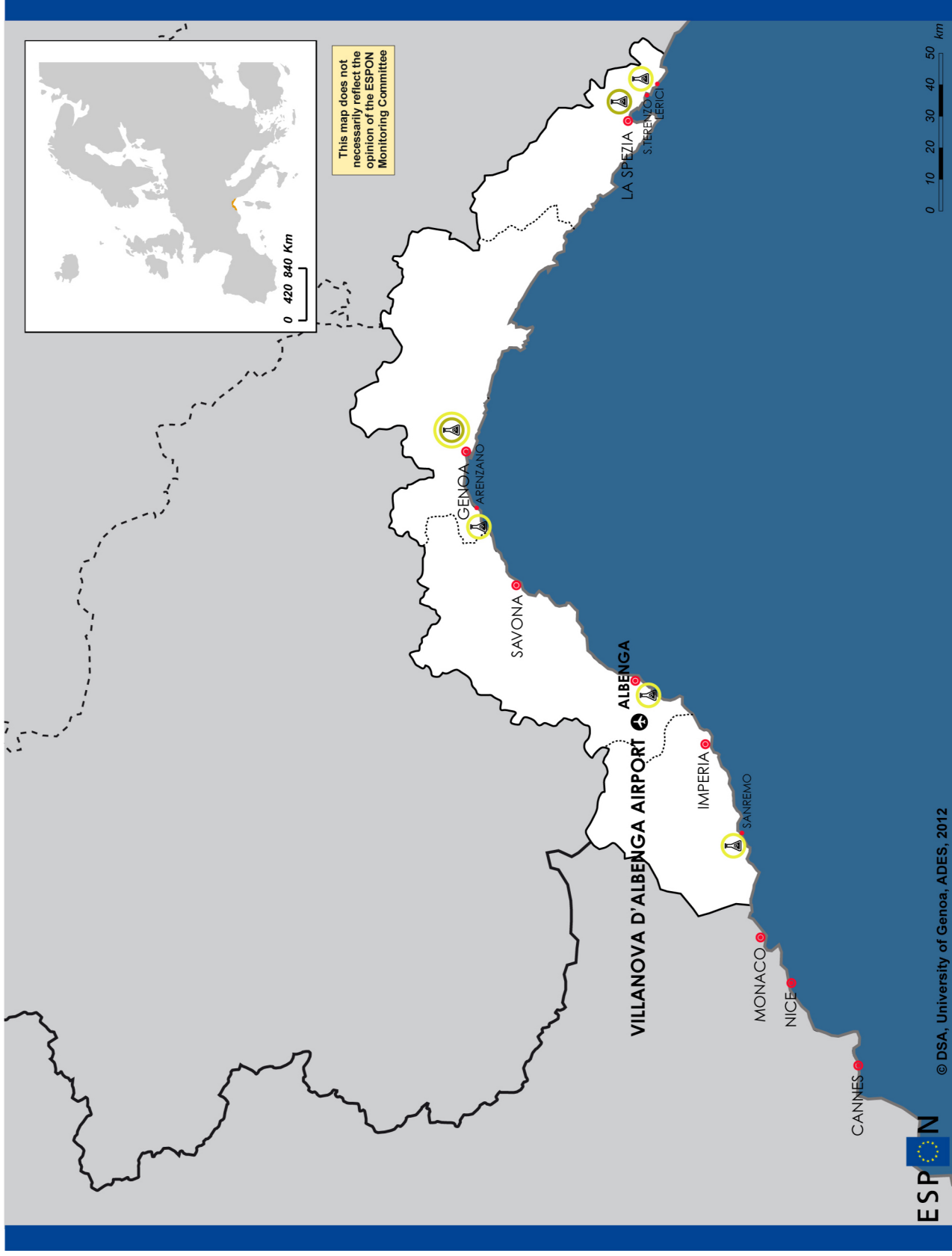
Shopping malls in Province of Savona



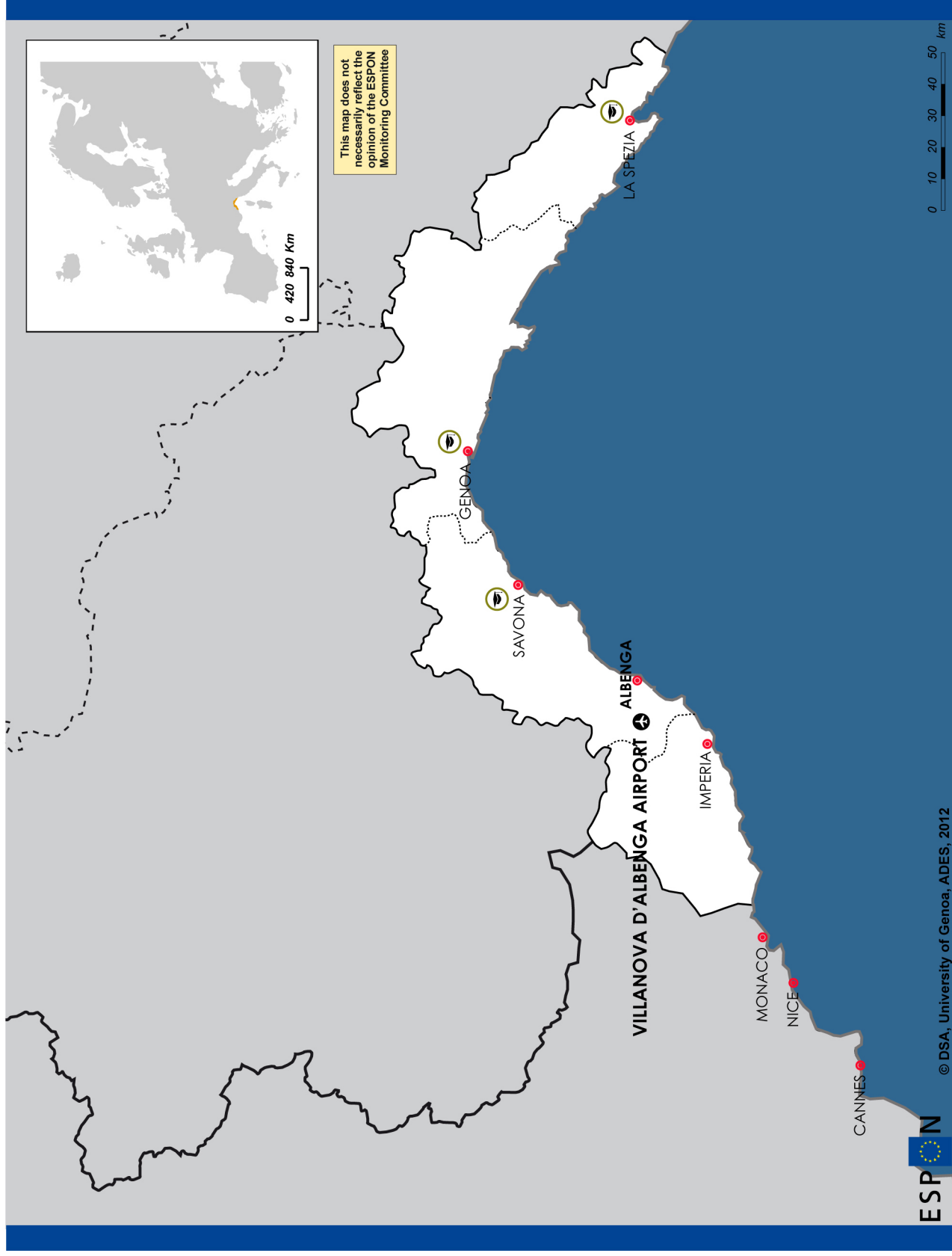
Commercial Import-Export in Province of Savona



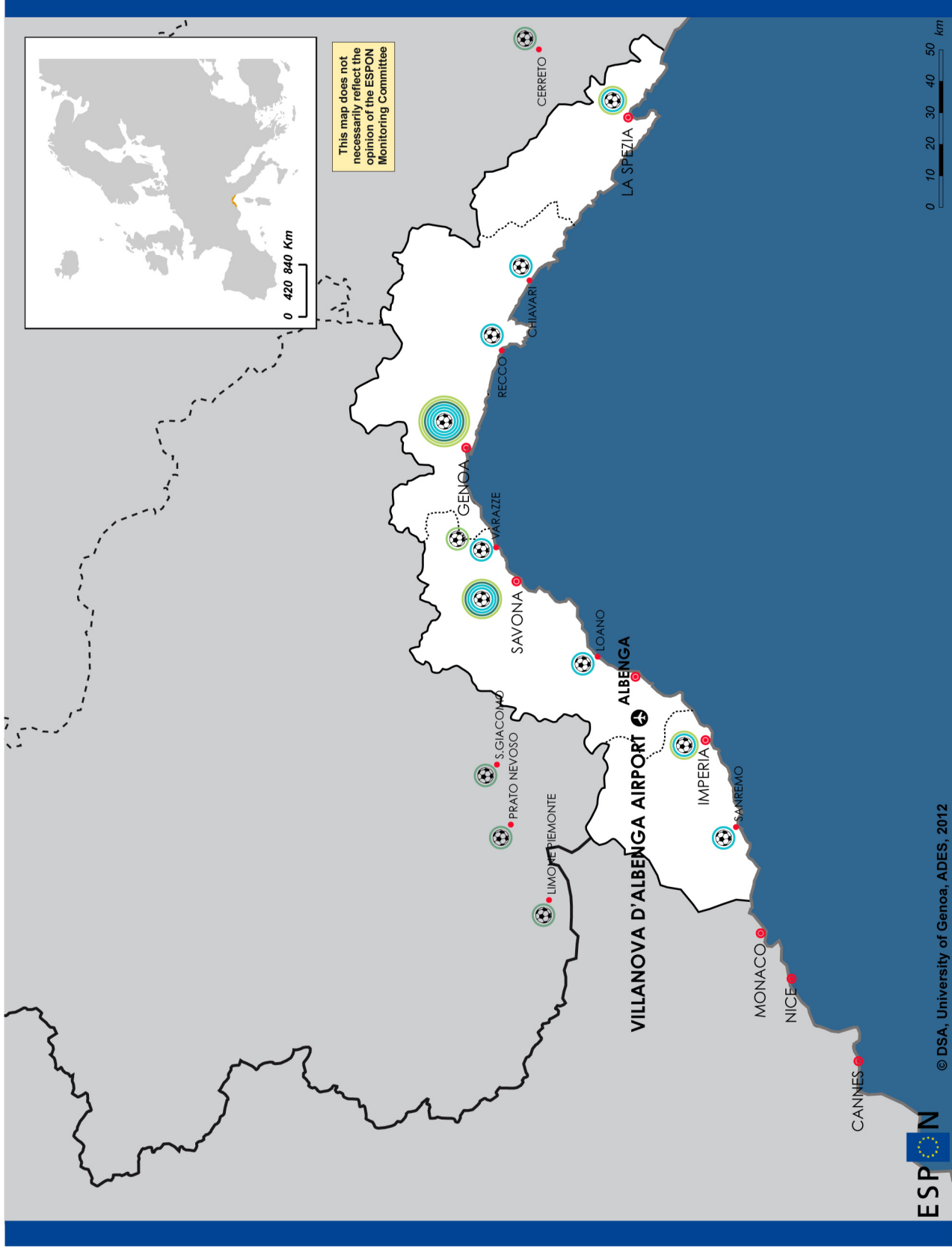
Research institutions in Province of Savona



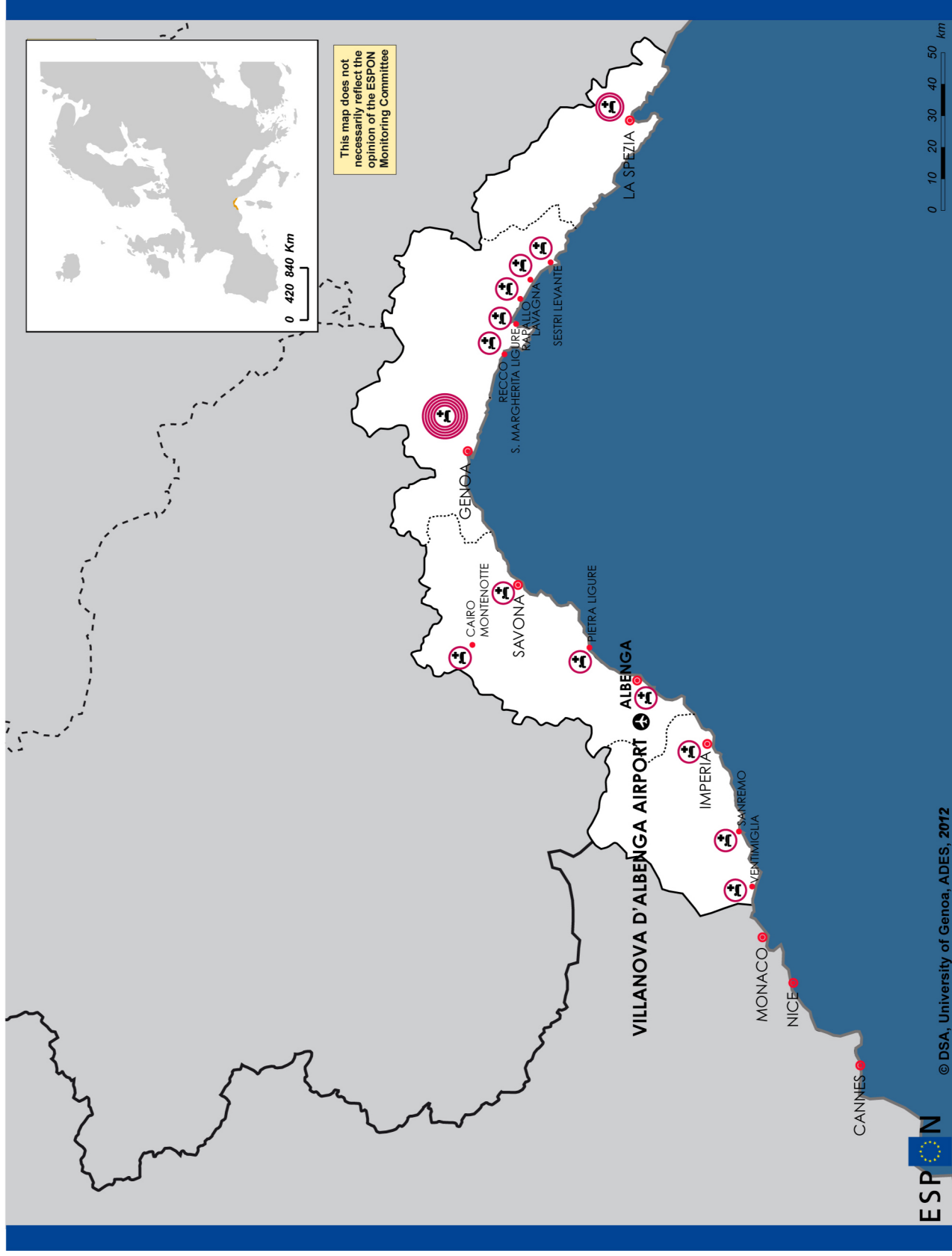
Universities in Province of Savona



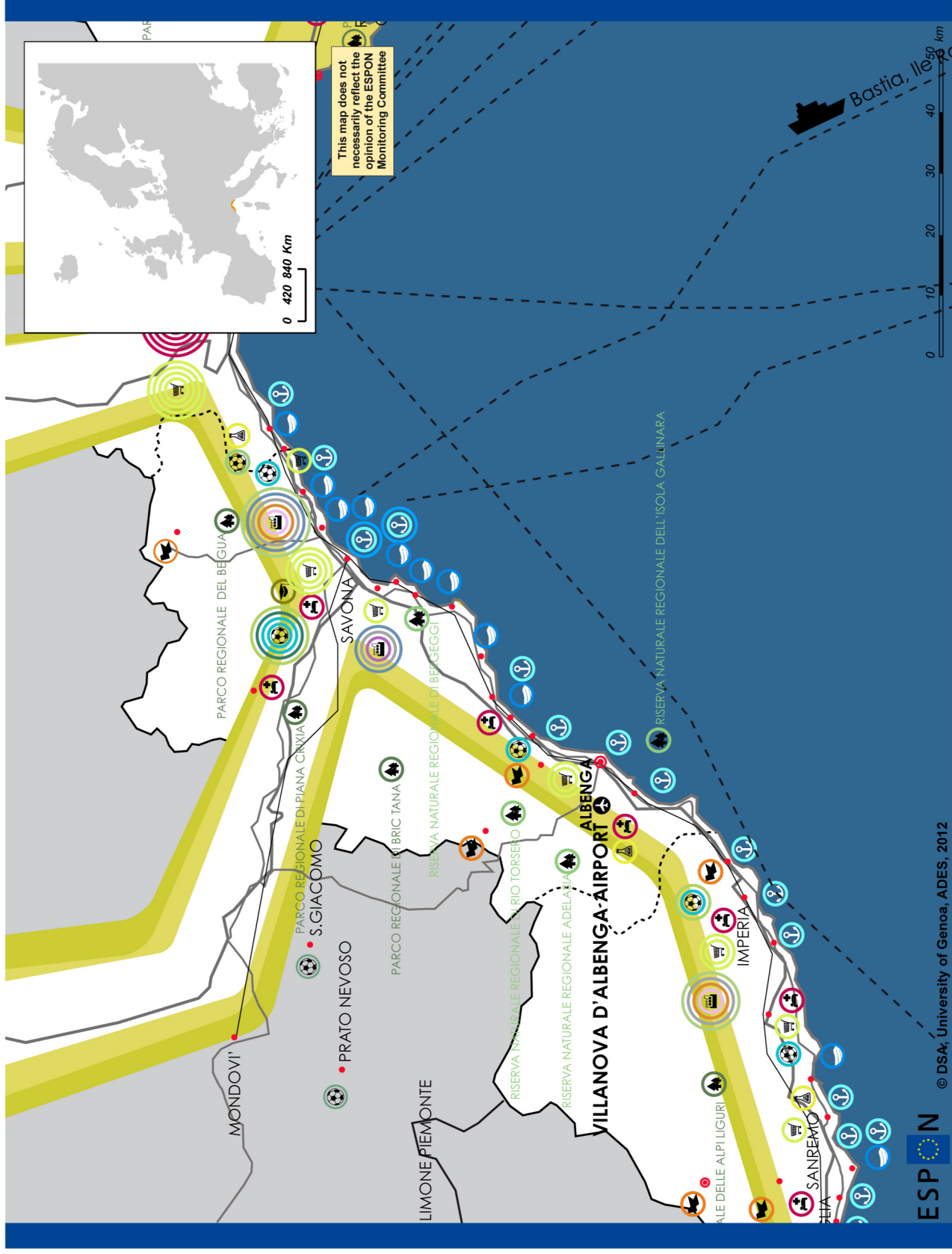
Sport complex in Province of Savona



Hospitals in Province of Savona



Comprehensive Map for Province of Savona



Infrastructures

- Inland ports
- Turistic harbours
- Ades airport
- Small airport
- Airfields
- trains
- existing highways
- secondary roads

Industry&Commerce

- shopping malls
- financial and insurances
- commerce and repairs
- activities
- mining
- transport
- hotel and public services
- housing and construction
- manufacturing
- agriculture

Public Services

- hospitals
- swimming pool
- golf
- athletic track
- ski resort
- football stadium

Education&Research

- universities
- research institutions academic
- research institutions academic

Tourism

- Natural park
- Cultural heritage
- Orange flags
- Beaches with blue flag

- 60-90-120 minutes
- number of flag

Regional level: NUTS 2
 Source: University of Genoa (DSA) 2012
 Origin of data: Descriptive maps ADES 2012
 © EuroGeographics Association n° for administrative boundaries

ID_Villanova d'Albenga Airport



VILLANOVA AIRPORT VLA
44° 02' 45" N 08° 07' 45" E

ELEVATION (SLM) 45M
RUNWAY LENGHT 1429M
SURFACE ASPHALT
TYPOLOGY CIVIL (PRIVATE)

LANDINGS -
PASSENGERS -

FACILITIES PARKING, AVIATION
SCHOOL, PRIVATE JET SERVICES
CONNECTIONS ALBENGA
SAVONA, GENOVA, VENTIMIGLIA

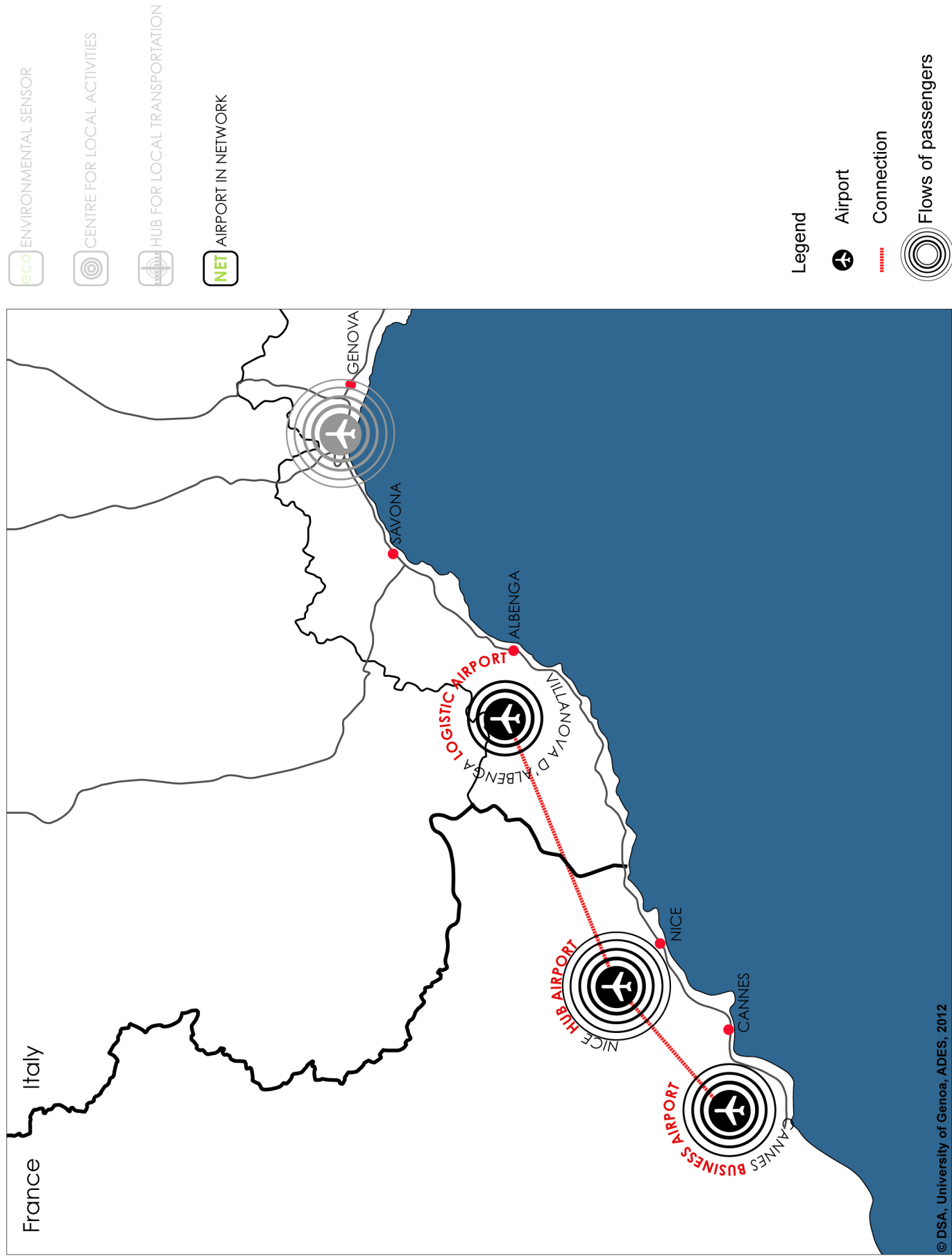
Legend

 Airport terminal

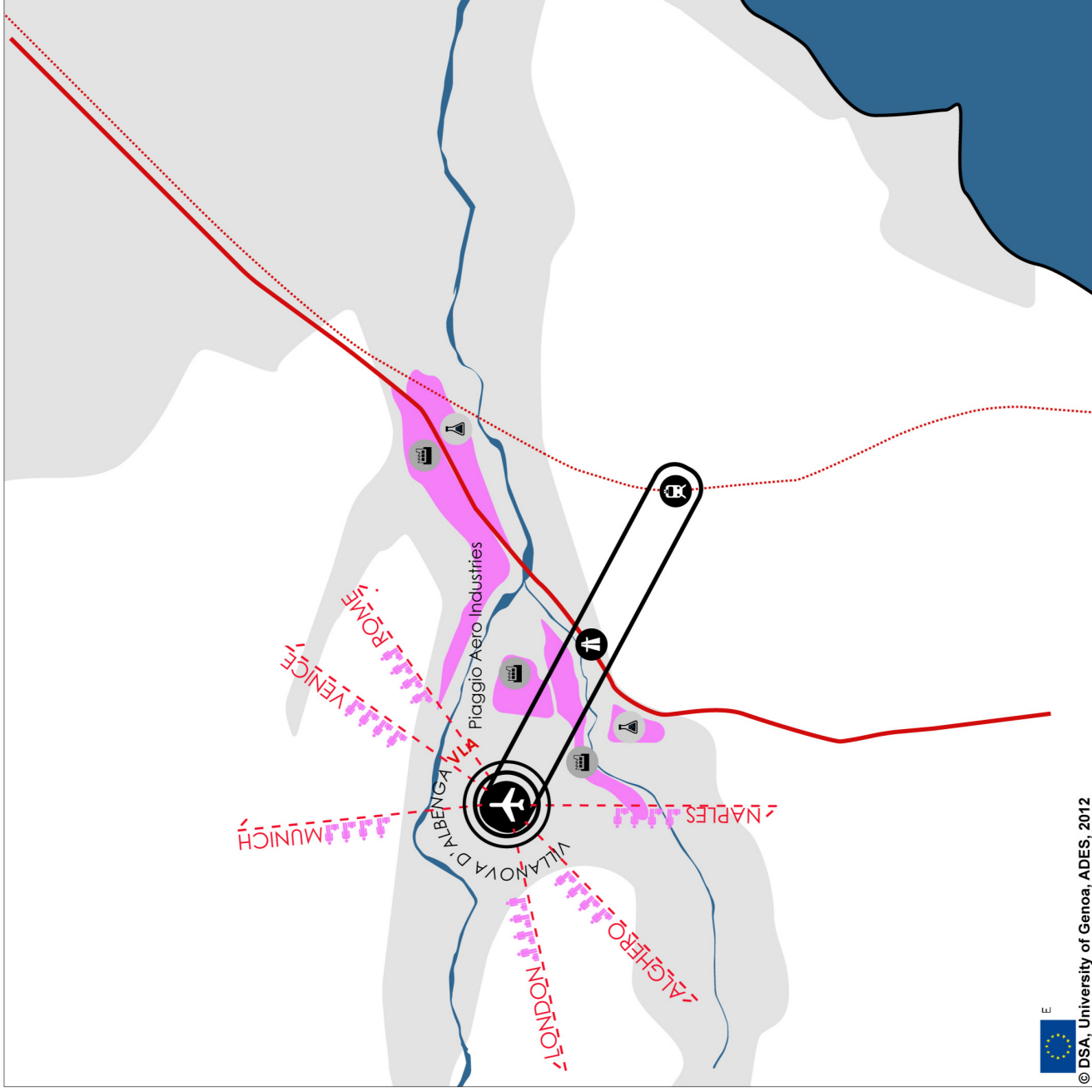
 Runway

 Buffer zone

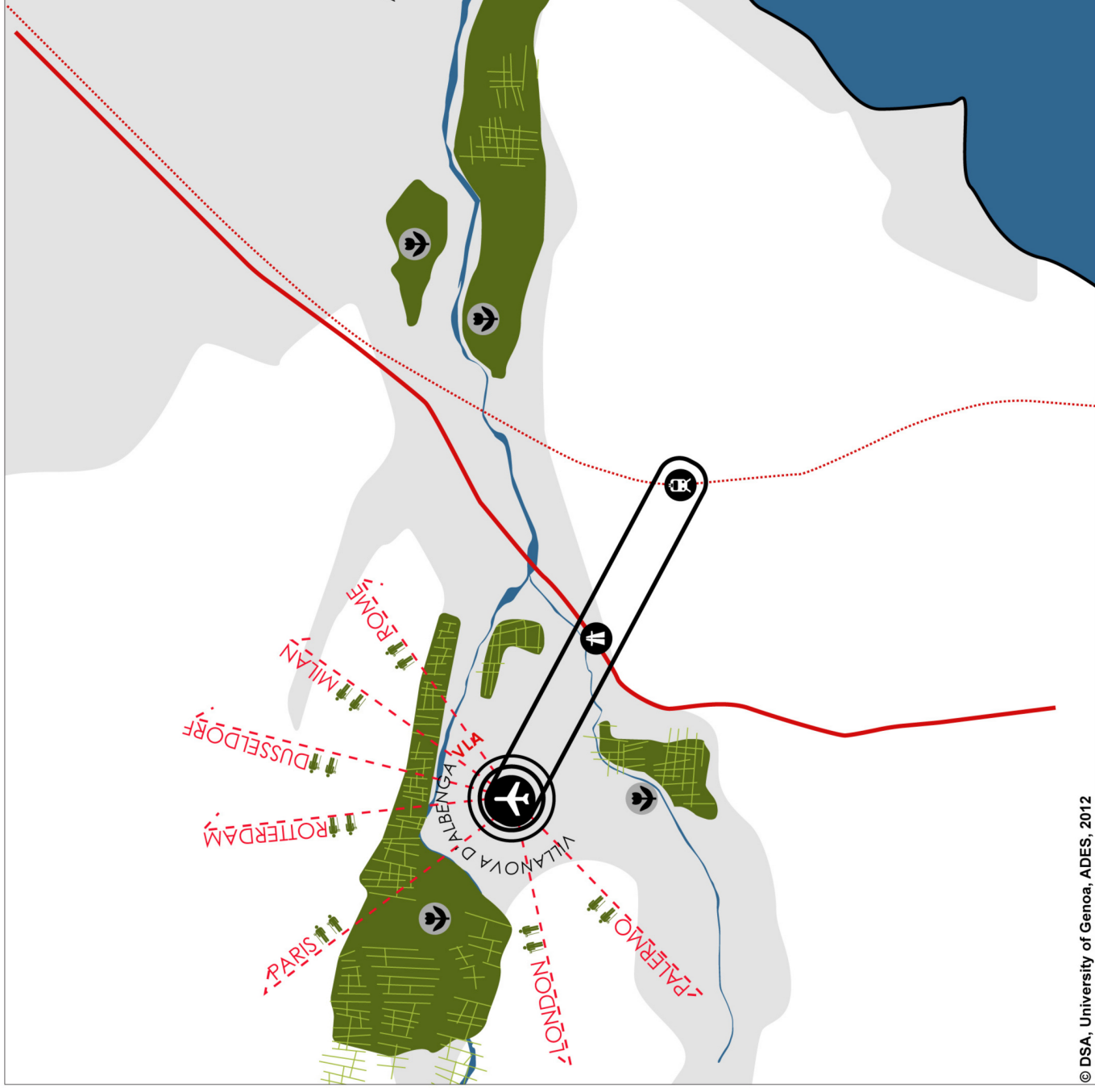
Strategy of Airport Network in Villanova d'Albenga Airport



REuse strategy in Villanova d'Albenga Airport: Industrial Airport



REuse strategy in Villanova d'Albenga Airport: ECO-Agriport



ECO ENVIRONMENTAL SENSOR

CC CENTRE FOR LOCAL ACTIVITIES

HT HUB FOR LOCAL TRANSPORTATION

NET AIRPORT IN NETWORK

Legend

Airport

Connection highway-railway- airport

Agriculture

Fruits

Flowers

city, New destinations

Villanova d'Albenga Airport Masterplan: Logistic Airport



Legend

- Logistic Airport
- Industrial Platform
- Agriculture
- Renewable energy
- Urban facilities
- Connection highway-railway-airport
- Green corridors
- Buffer zone

www.espon.eu

The ESPON 2013 Programme is part-financed by the European Regional Development Fund, the EU Member States and the Partner States Iceland, Liechtenstein, Norway and Switzerland. It shall support policy development in relation to the aim of territorial cohesion and a harmonious development of the European territory.