



Co-financed by the European Regional Development Fund



Inspire Policy Making with Territorial Evidence

Migration flows and integration

Data evidence and best practices in the EU

Dr Laurent Frideres, ESPON EGTC

Conference goals



Data



Policies



Exchange

Refugee and asylum seeker flows



ESPON and Interact joining forces



Pilot action “Interreg response to migration-related challenges”

Background

As in the Conclusions of General Affair Council of 19 November 2015, where it is stated that the Council:

“CONSIDERS that Interreg programmes, even though operating with a medium and long-term perspective, may support, where necessary and justified, and in complementarity with other appropriate funding streams, to help respond to migration related challenges within the framework of existing programme priorities and agreed intervention logic; RECOGNISES the potential role for the ESPON and the INTERACT programme within the scope of their agreed objectives of providing territorial evidence (ESPON) and supporting Interreg Managing Authorities and other programme bodies (INTERACT) in this”;

What ESPON does

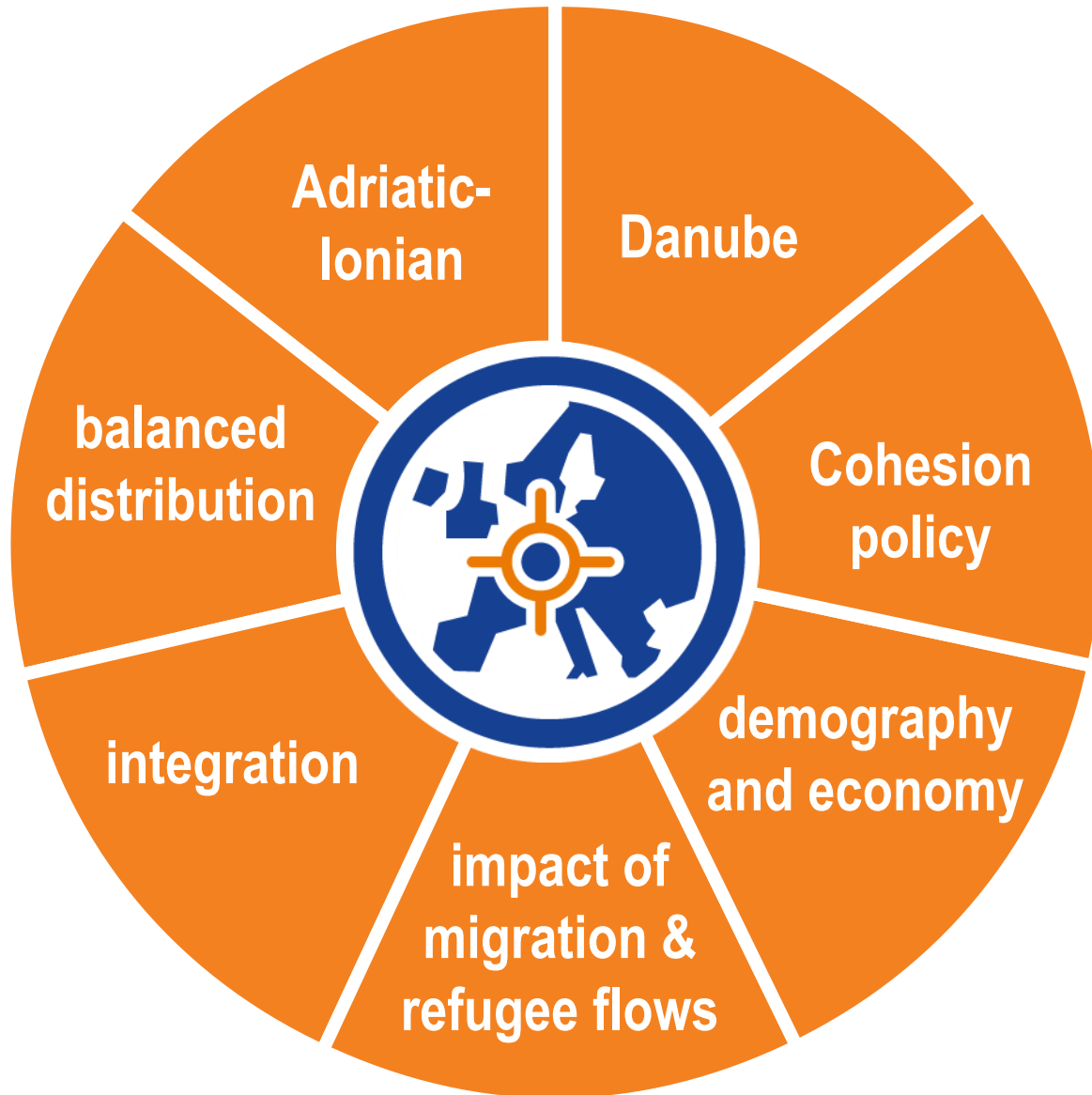




Our applied research

www.espon.eu/refugee





Our targeted analysis

www.espon.eu/migration





Our bigger picture

www.espon.eu/post-2020



11:45

Territorial research and engineering



Thank you

Laurent Frideres, ESPON EGTC, laurent.frideres@espon.eu

This presentation will be made available at: www.espon.eu/athens