



ACTAREA – Thinking & Planning in Areas of Territorial Cooperation

ESPON peer-learning workshop „Future Vision 2030“, Stettin 2019
Stefan Obkircher

ACTAREA / Project Background

> ESPON [TA]: Targeted Analysis

> Stakeholders:

- Swiss Federal Office for Spatial Development (ARE)
- German Federal Ministry of Transport and Digital Infrastructure
- International Spatial Development Conference Lake of Constance (ROK-B)

> Service Provider:

- Spatial Foresight, Luxembourg
- University of Geneva, Switzerland
- University of Erlangen, Germany

ACTAREA / Research on Soft Territorial Cooperation Areas

> The objective of the project:

- identify good governance-practices, their implementation and their long-term impacts
- identify policy frameworks and strategies of cooperation initiatives
- develop practical guidance on how to implement and coordinate the implementation of policies in action areas in relation to existing levels of governance.

> European survey = 100 territorial cooperation instances

- 12 European case studies (incl. ROK-B)
- 12 Swiss case studies = Action areas

ACTAREA-Handbook

Guide to developing soft territorial cooperation

>The soft cooperation planning tools are:

- **Institutional mapping:** instrument for designing cooperation in relation to other territorial collaborations and institutions dealing with territorial development.
- **Mapshots:** an instrument for the design of cooperation in relation to geographical features, socio-economic patterns and (perceived) cooperation dynamics.

>The Aim of the handbook is to

- bridge the gap between territorial evidence and the implementation of soft cooperation
- support the inclusion of evidence into participatory processes

ACTAREA

Case-Study Lake Constance

Neighbourly Relations

An aerial photograph showing a city divided by a river. The upper part of the image shows a dense urban area with various buildings, including a prominent yellow industrial building. A bridge is under construction across the river, with two yellow cranes visible. The lower part of the image shows a residential area with many houses and smaller buildings. The river flows from the left towards the right.

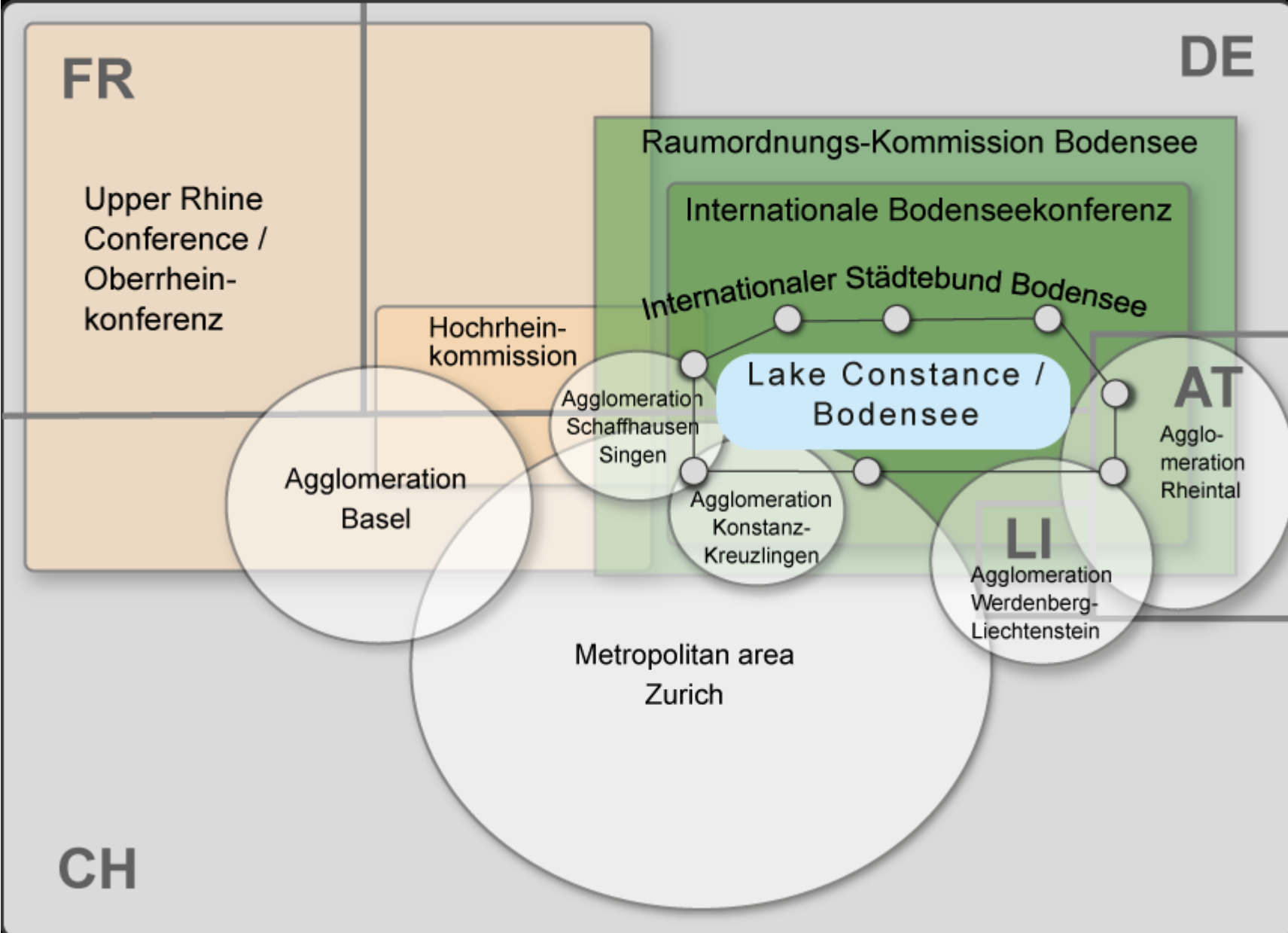
Switzerland

Alpine Rhine / Border

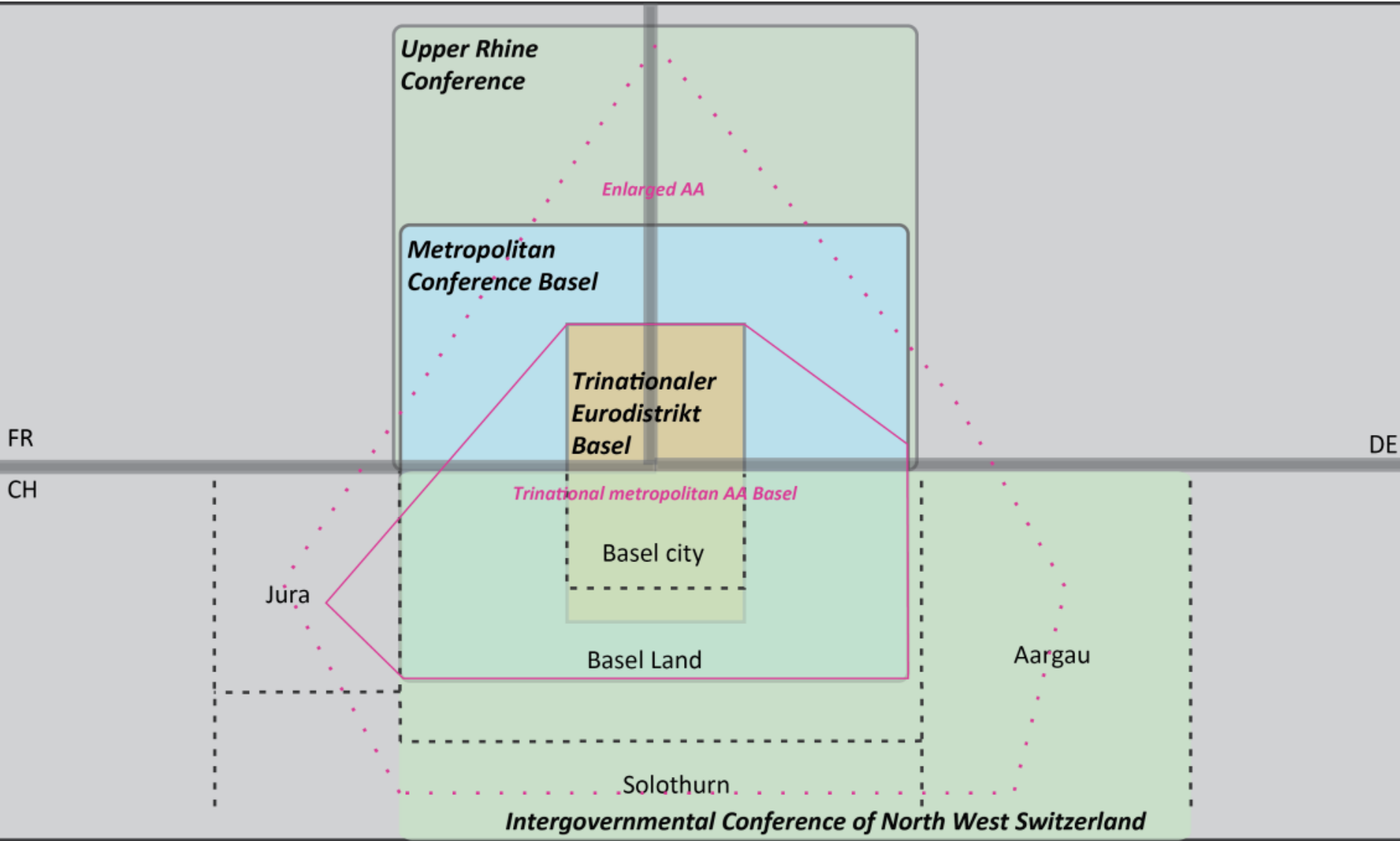
Austria

Institutional Mapping

Institutional Map Lake Constance



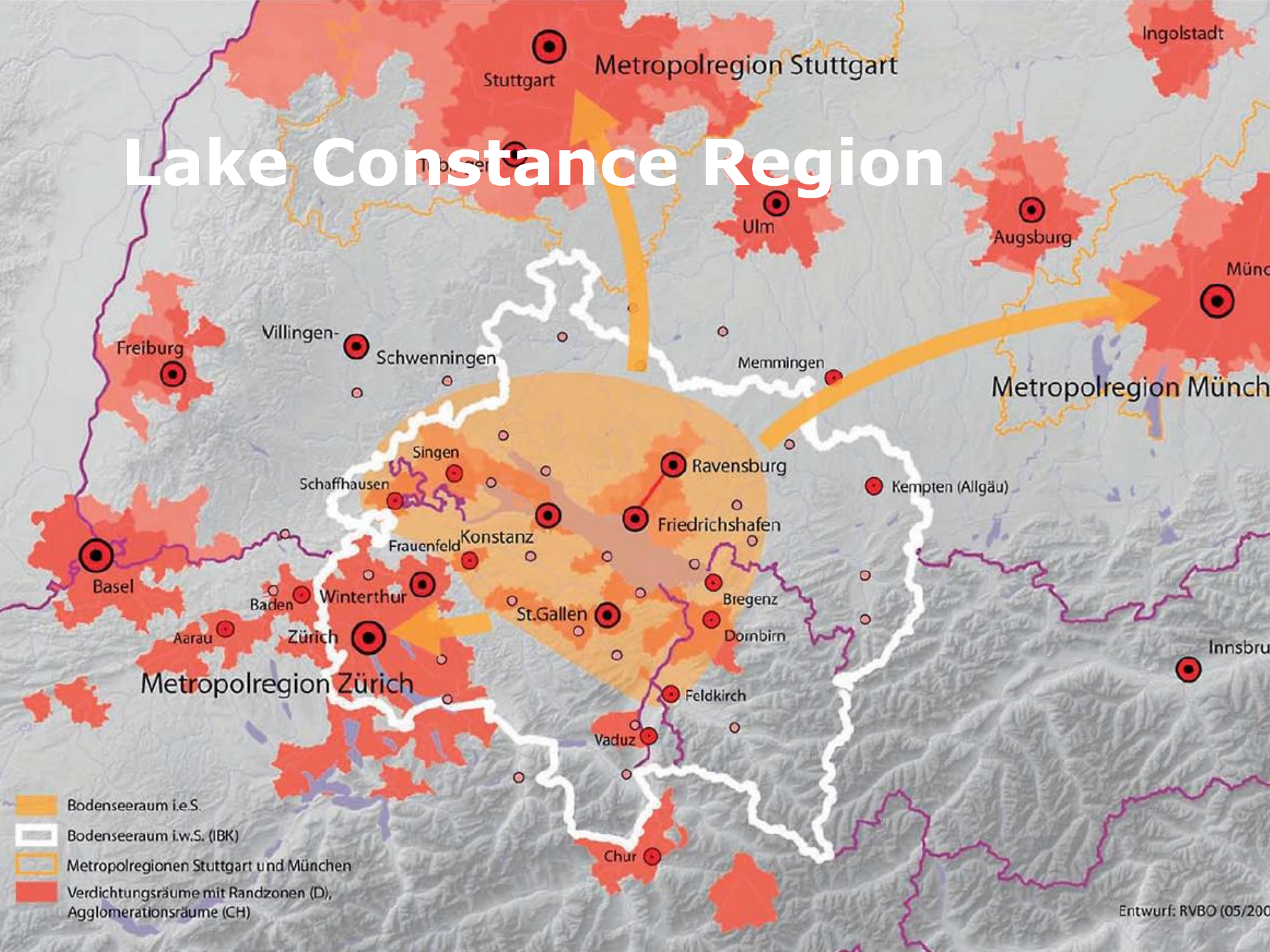
Institutional Map Basel



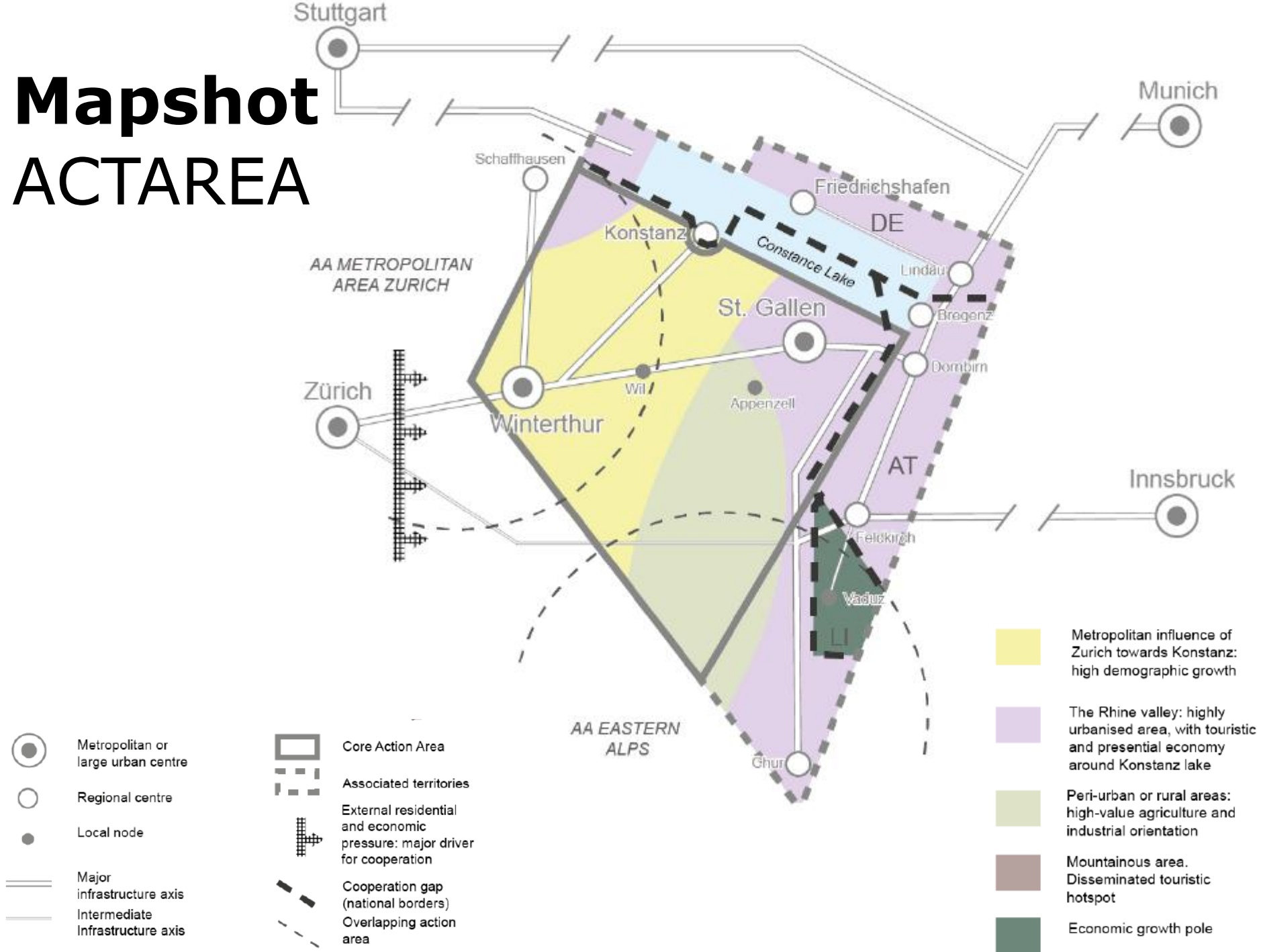
Mapshots



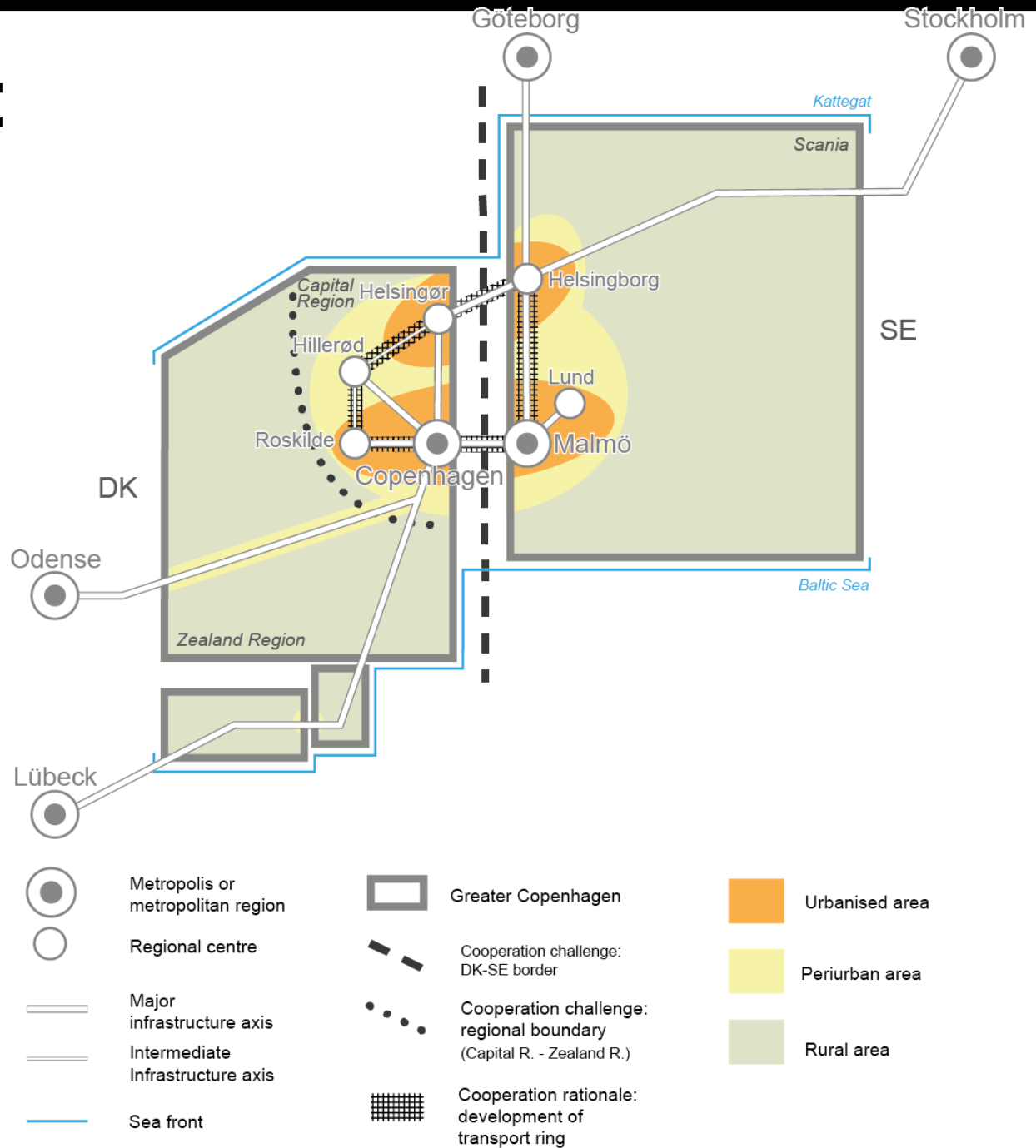
Lake Constance Region



Mapshot ACTAREA



Mapshot ACTAREA



Thank you for your attention!

Stefan Obkircher

Federal State of Vorarlberg

Department for Spatial Planning

stefan.obkircher@vorarlberg.at

0043 5574 511 27127

