

# Common Future Vision for the German-Polish Interaction Area Horizon 2030



## Goal I.2

**Taking into account the implications  
of neighbourly relations for local  
and regional development**

Dirk Dreßler, Saxon State Ministry of the Interior  
Dr Maciej Zathey, Institute for Territorial Development

*ESPON workshop, Szczecin 24-25.06.2019*

## Common Future Vision By 2030...

- » each local and regional development strategy will include a chapter on the implications of neighbourly relations.
- » the practice of sharing social and technical infrastructure resources along the Oder-Neisse line will have become common

*Neighbourly relations and their implications will be explicitly accounted for when drawing-up local and regional development strategies.*

*Experience and potentials of border towns and twin cities as “laboratories” of cooperation and gateways of exchange between Poland and Germany will be used intensively.*

# Implementation of Vision 2030 Smart Integration

1. **INTERREG Poland-Saxony 2014-2020**
2. **Lead partner: Saxon Ministry of the Interior**
3. **Partner: Lower Silesia - Marshal's Office and the Institute for Territorial Development**
4. **01.02.2017 –31.01.2020 (36 months)**
5. **Project value: 1.340.653,22 EUR**
6. **European Regional Development Fund 85% (1.139.555,12 EUR)**

## Smart Integration

**Main goal:**

strengthening and intensifying administrative cooperation in the field of spatial and regional development in the Lower Silesia-Saxon border area (support area), in particular with regard to combating negative demographic changes.

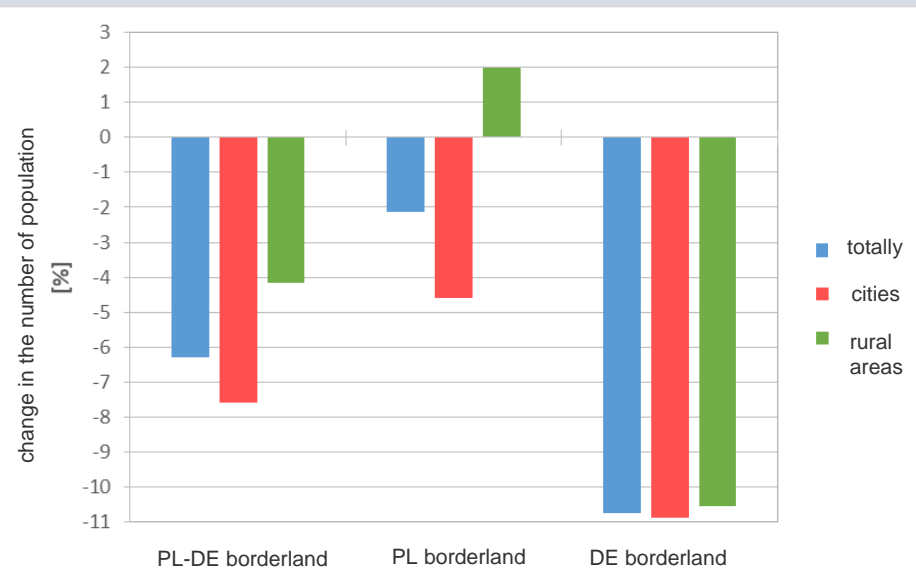
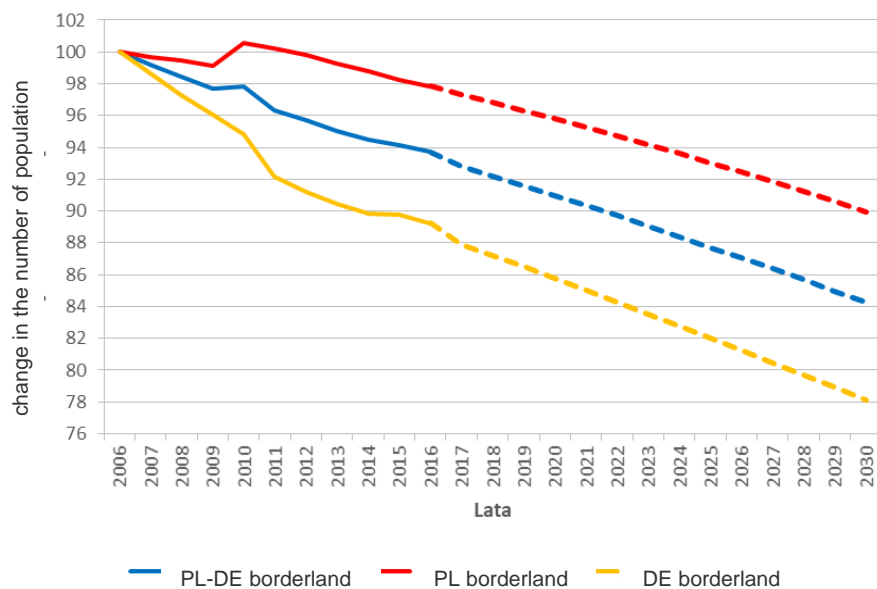
**Main products:**

Socioeconomic analysis, Study of the Lower Silesian and Saxon area of connections.



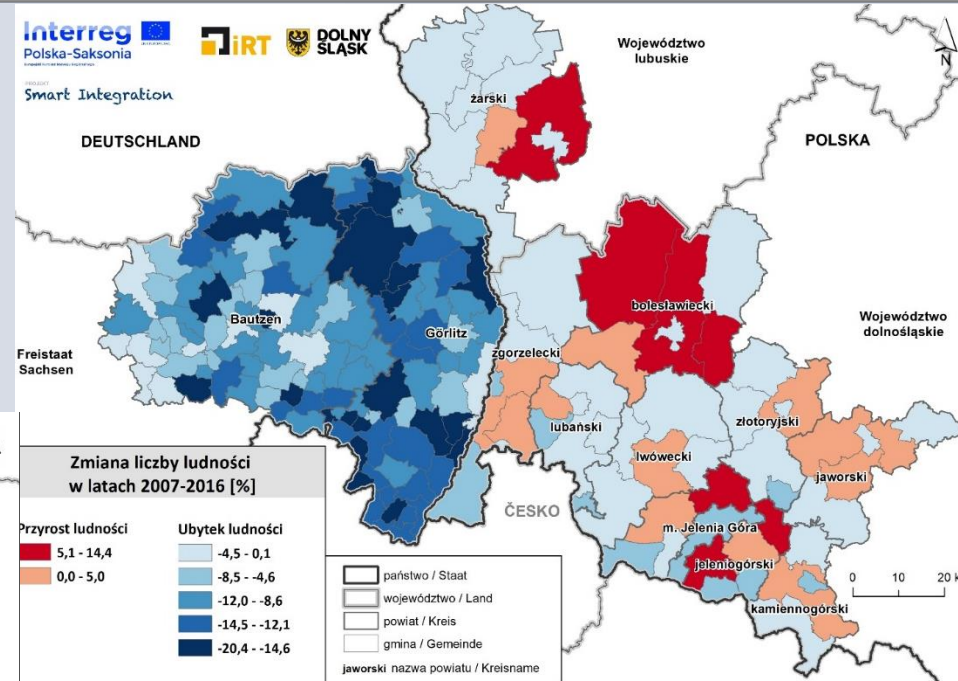
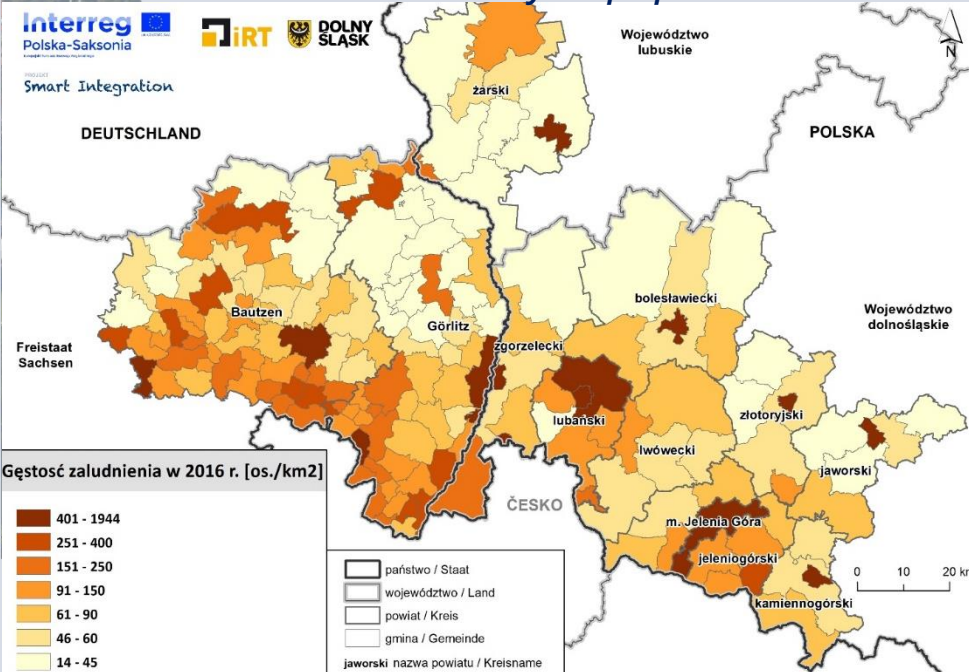
## Socioeconomic analysis - demography

- declining population,
- decrease in the number of inhabitants in cities (small and medium)



- disproportions in the level of population

density of population in 2016



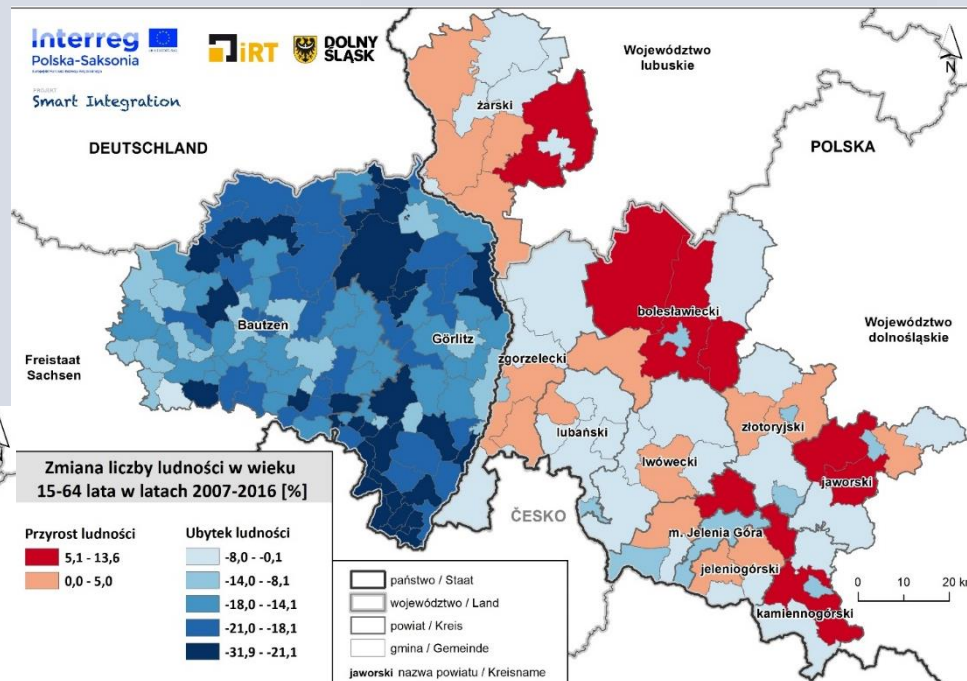
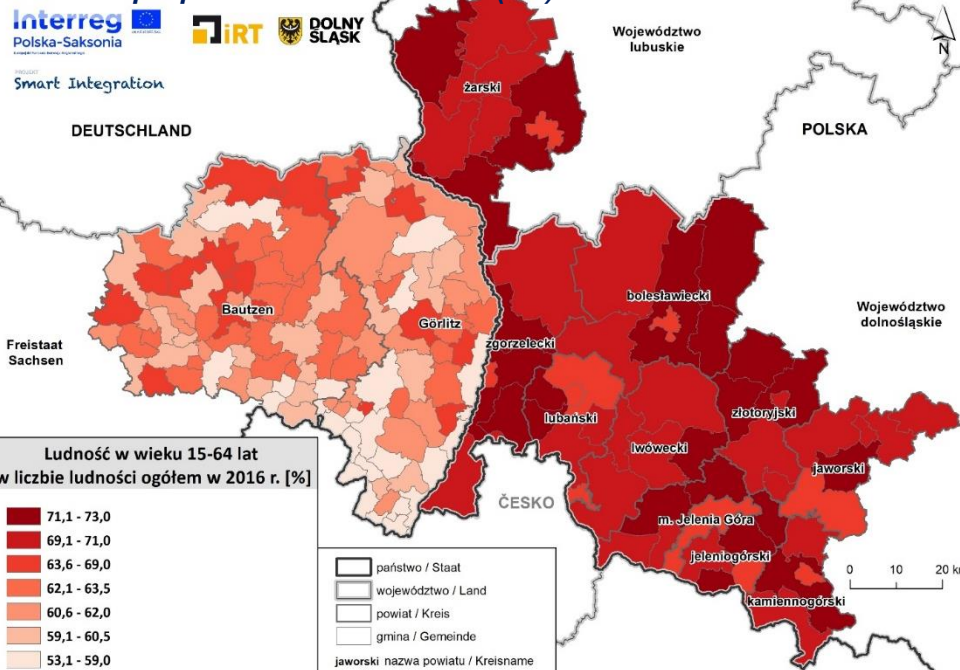
change in the number of people 2007-2016 (%)

- deepening depopulation process, especially depopulation of rural areas in the peripheral areas of the region (Sudety)



- negative natural increase and migration balance

share of population aged 15-64 in the total population in 2016 (%)

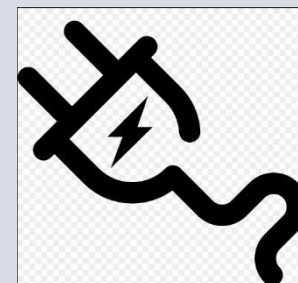


change in the number of people aged 15-64 in 2007-2016 (%)

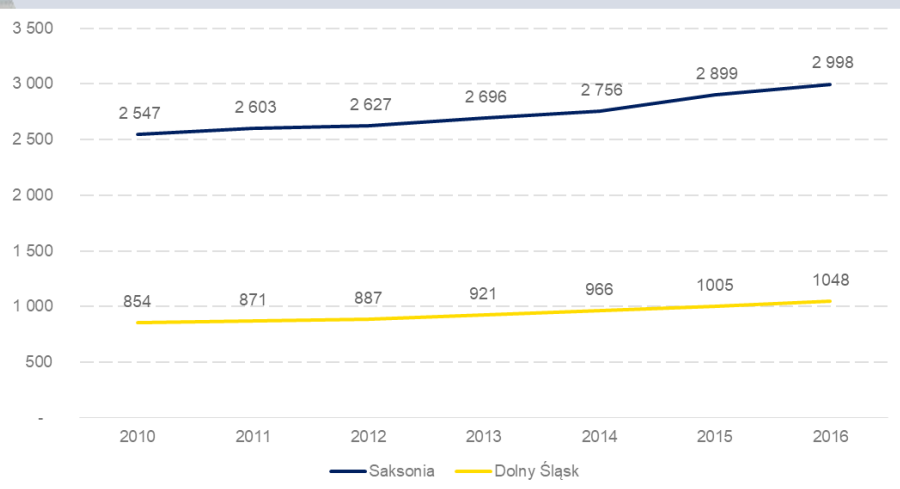
- unfavorable transformations of the population structure by age

# Socioeconomic analysis - services

## fees for services



## everyday shopping basket



### Poland

- *electricity* 7,52 7,11
- *sewage* 105,87 145,88
- *cold water* 81,44 101,64

**2010 2016**

### Germany

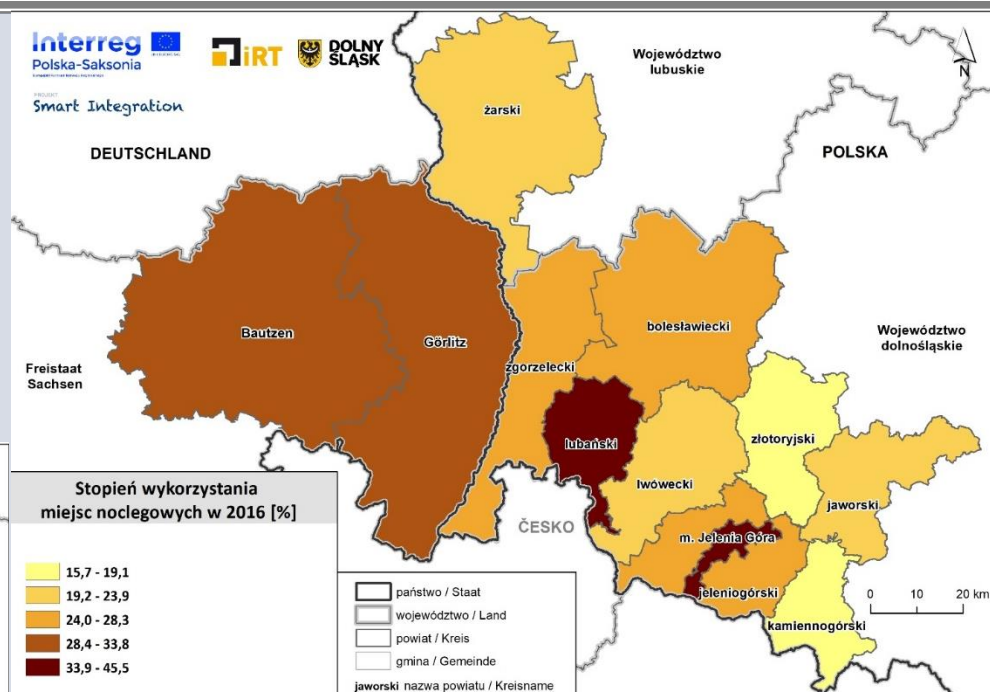
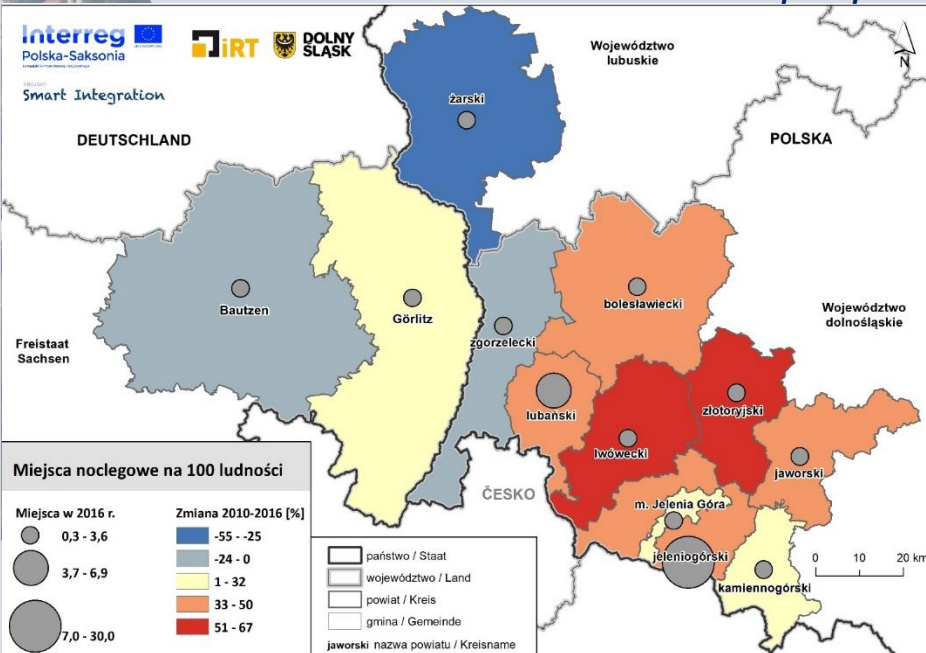
- *electricity* 25,08 28,40
- *sewage* 346,87 360,00
- *cold water* 263,73 271,00

	2010	2016
<b>Poland</b>	17,95	17,35
<b>Germany</b>	31,35	33,15



- outstanding qualities of the natural environment and cultural heritage, which are a chance for tourism development,
- common cultural and historical heritage of the cross-border region, which is a platform for building cooperation and creating a common tourist brand

*accommodation for 100 people*

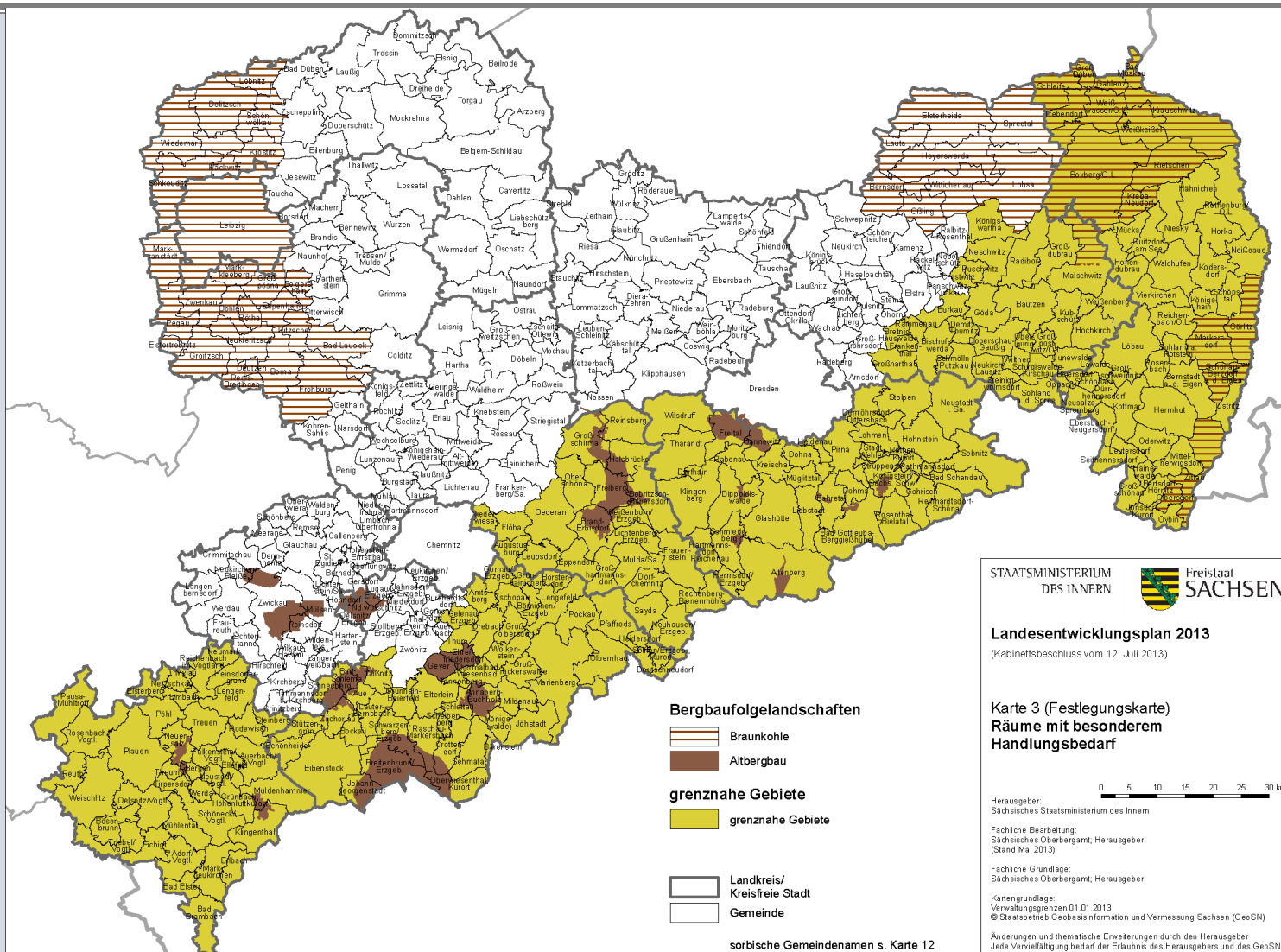


*use of accommodation in 2016 (%)*

- increasing number of people using accommodation on both sides of the border (with a slight advantage of the Polish side), which proves the increase in the number of tourists interested in

# Development Plan of the Free State of Saxony

Areas with special need for action



STAATSMINISTERIUM  
DES INNERN



**Landesentwicklungsplan 2013**  
(Kabinettsbeschluss vom 12. Juli 2013)

**Karte 3 (Festlegungskarte)**  
**Räume mit besonderem Handlungsbedarf**

Herausgeber:  
Sächsisches Staatsministerium des Innern

Fachliche Bearbeitung:  
Sächsisches Oberbergamt, Herausgeber  
(Stand Mai 2013)

Fachliche Grundlage:  
Sächsisches Oberbergamt, Herausgeber

Kartengrundlage:  
Verwaltungsgrenzen 01 01 2013  
© Staatsbetrieb Geobasisinformation und Vermessung Sachsen (GeoSN)

Änderungen und thematische Erweiterungen durch den Herausgeber  
Jede Vervielfältigung bedarf der Erlaubnis des Herausgebers und des GeoSN.

0 5 10 15 20 25 30 km

## Saxon – Lower Silesia cross border study

### Main objective

Common strategie for future spatial development for Interaction Area

### Strategic goals

- support of mutal assitance and exchange concerning common challenges
- Strengthening cross border interrelations

## Saxon – Lower Silesia cross border study

action programme with guiding principles,  
needs for action and solutions

### Fields of action

1. Service of general interest and access to goods and services
2. accessibility by transport
3. economy and innovation
4. tourism, culture and natural environment

## Saxon – Lower Silesia cross border study

### supply of goods and services (public services)

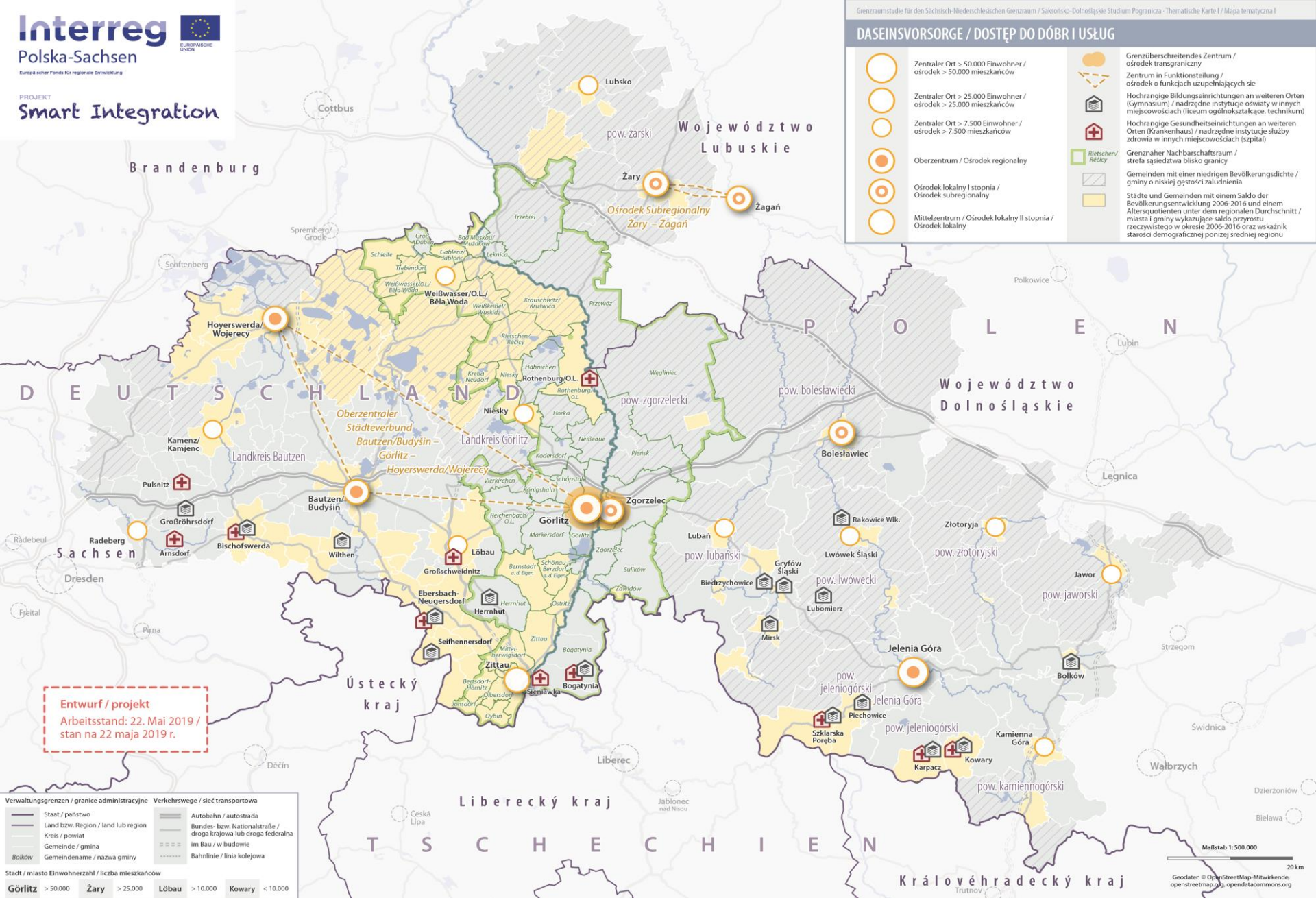
- ➔ strengthening cooperation in rural area
  - bundling supply of goods
  - concentration on transport links for interaction area

### *next steps*

- ➔ identifying interaction areas
- ➔ development of integrated mobility concepts
- ➔ Establishment of multi-functional regional and advice centres (so called „Mobility Centres“)

**DASEINSVORSORGE / DOSTĘP DO DÓBR I USŁUG**

	Zentraler Ort > 50.000 Einwohner / osrodek > 50.000 mieszkańców		Regionübergreifendes Zentrum / ośrodek transregionalny
	Zentraler Ort > 25.000 Einwohner / osrodek > 25.000 mieszkańców		Zentrum in Funktionstellung / ośrodek o funkcjach uzupelniających sie
	Zentraler Ort > 7.500 Einwohner / osrodek > 7.500 mieszkańców		Hochrangige Bildungseinrichtungen an weiteren Orten (Gymnasium) / nadzrednie instytucje oświaty w innych miejscowościach (liceum ogólnokształcące, technikum)
	Oberzentrum / Ośrodek regionalny		Hochrangige Gesundheitseinrichtungen an weiteren Orten (Krankenhaus) / nadzrednie instytucje służby zdrowia w innych miejscowościach (szpital)
	Ośrodek lokalny I stopnia / Ośrodek subregionalny		Grenznaher Nachbarschaftsraum / strefa sąsiedztwa blisko granicy
	Mittelzentrum / Ośrodek lokalny II stopnia / Ośrodek lokalny		Gemeinden mit einer niedrigen Bevölkerungsdichte / gminy o niskiej gęstości zaludnienia
			Städte und Gemeinden mit einem Saldo der Bevölkerungsentwicklung 2006-2016 und einem Altersquotienten unter dem regionalen Durchschnitt / miasta i gminy wykazujące saldo przyrostu rzeczywistego w okresie 2006-2016 oraz wskaźnik starości demograficznej poniżej średniej regionu



Entwurf / projekt  
 Arbeitsstand: 22. Mai 2019 /  
 stan na 22 maja 2019 r.

Verwaltungsgrenzen / granice administracyjne		Verkehrswege / sieć transportowa	
	Staat / państwo		Autobahn / autostrada
	Land bzw. Region / land lub region		Bundes- bzw. Nationalstraße / droga krajowa lub droga federalna im Bau / w budowie
	Kreis / powiat		Bahnlinie / linia kolejowa
	Gemeinde / gmina		
	Bolków		
	Gemeinde / gmina		
	Gemeinde / gmina		
	Stadt / miasto Einwohnerzahl / liczba mieszkańców		
	Görlitz > 50.000		
	Żary > 25.000		
	Löbau > 10.000		
	Kowary < 10.000		

Maßstab 1:500.000  
 20 km  
 Geodaten © OpenStreetMap-Mitglieder, openstreetmap.org, openstreetmap.org

## Saxon – Lower Silesia cross border study

### supply of goods and services (public services)

- ➔ Strengthening cross border cooperation  
(close to the border)
  - cross border provision of public services
  - easy access to cross border public services

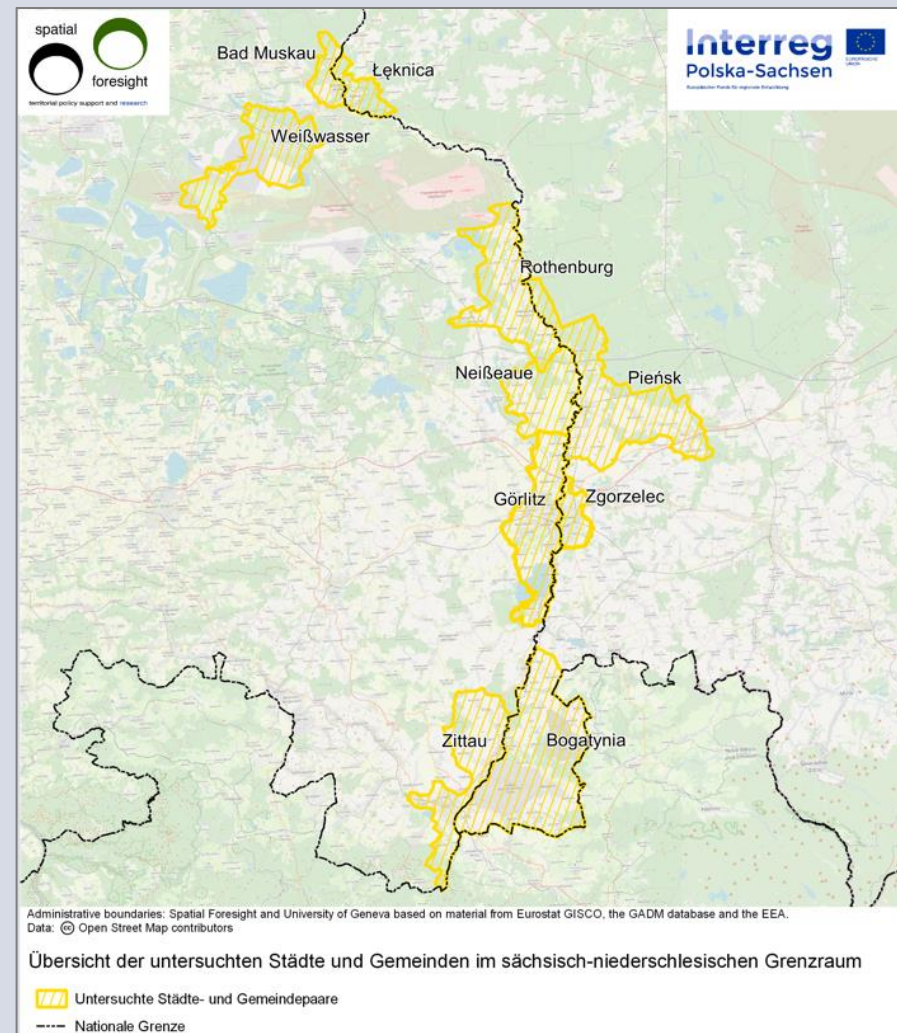
### *Next steps*

- ➔ *Development of a Catalogue of public services*
- ➔ *Preparation and implementation of pilot projects*

## Expertise on possibilities for action in the Saxon-Polish border region to ensure public services through cross border intermunicipal cooperation

### Centre of analysis

German Municipalities	Polish Municipalities	Supplementary area
Bad Muskau	Łęknica	Weißwasser (Oberlausitz) (DE)
Neißeau	Pieńsk	Rothenburg (DE)
Görlitz	Zgorzelec	
Zittau	Bogatynia	Liberec (CZ)





Identified needs (Selection)	Policy field	Spatial focus	Perspective of implementation
Joint tourist office	Tourism	Bad Muskau - Łęknica	short-term
Bilingual Kindergarden (access for childs on both sides the border )	Education	all municipalities, focused on Hirschfelde and Trzciniec Dolny	short and mid-term
Cross border public transport system	Public transport	Görlitz – Zgorzelec (may be regional extensions Neißeau – Pieńsk)	mid-term
Cross border home-based health care	Healthcare	Neißeau – Pieńsk and Bad Muskau – Łęknica	mid-term
Cross border schools	Secondary schools	all Municipalities, focused on Bad Muskau – Łęknica(Weißwasser)	mid and long-term
Bilingual cross border primary schools	Primary schools	all Municipalities, focused on Neißeau – Pieńsk and Görlitz – Zgorzelec	long-term

© Spatial foresight/Hempel Krzymuski Partner

# Challenges

- Reducing the language barrier

## Projektzeitraum

1. September 2017 bis 31. August 2019

## Finanzierung



Das Projekt wird finanziert aus Mitteln des Europäischen Fonds für Regionale Entwicklung im Rahmen des Kooperationsprogramms INTERREG Polen-Sachsen 2014-2020 sowie aus Mitteln des DODN und des Landkreises Görlitz.

Wir freuen uns auf die Zusammenarbeit und laden Kitas, Pädagogen/Pädagoginnen und alle Interessierten sehr herzlich zur Mitarbeit ein!

## Kontakt (Projektpartner)

Landratsamt Görlitz  
Sächsische Landesstelle für  
frühe nachbarsprachige Bildung (LaNa)



Bahnhofstraße 24  
02826 Görlitz



## Groß für Klein • Duzi dla małych

Transgraniczna współpraca dla wspierania edukacji  
przedszkolnej w zakresie kultury i języka sąsiada

Grenzüberschreitende Zusammenarbeit zur Förderung  
der interkulturellen und nachbarsprachigen Bildung  
im Bereich der Vorschulerziehung



Projekt „Groß für Klein – Duzi dla małych: Transgraniczna współpraca dla wspierania edukacji przedszkolnej w zakresie kultury i języka sąsiada”



- positive example: „Big for Small” cross-border cooperation to support pre-school education in the field of neighbor's culture and language

- Using the potential of border and twin cities as „laboratories" for cooperation:  
Europastadt Görlitz/Zgorzelec

## REVIVAL!

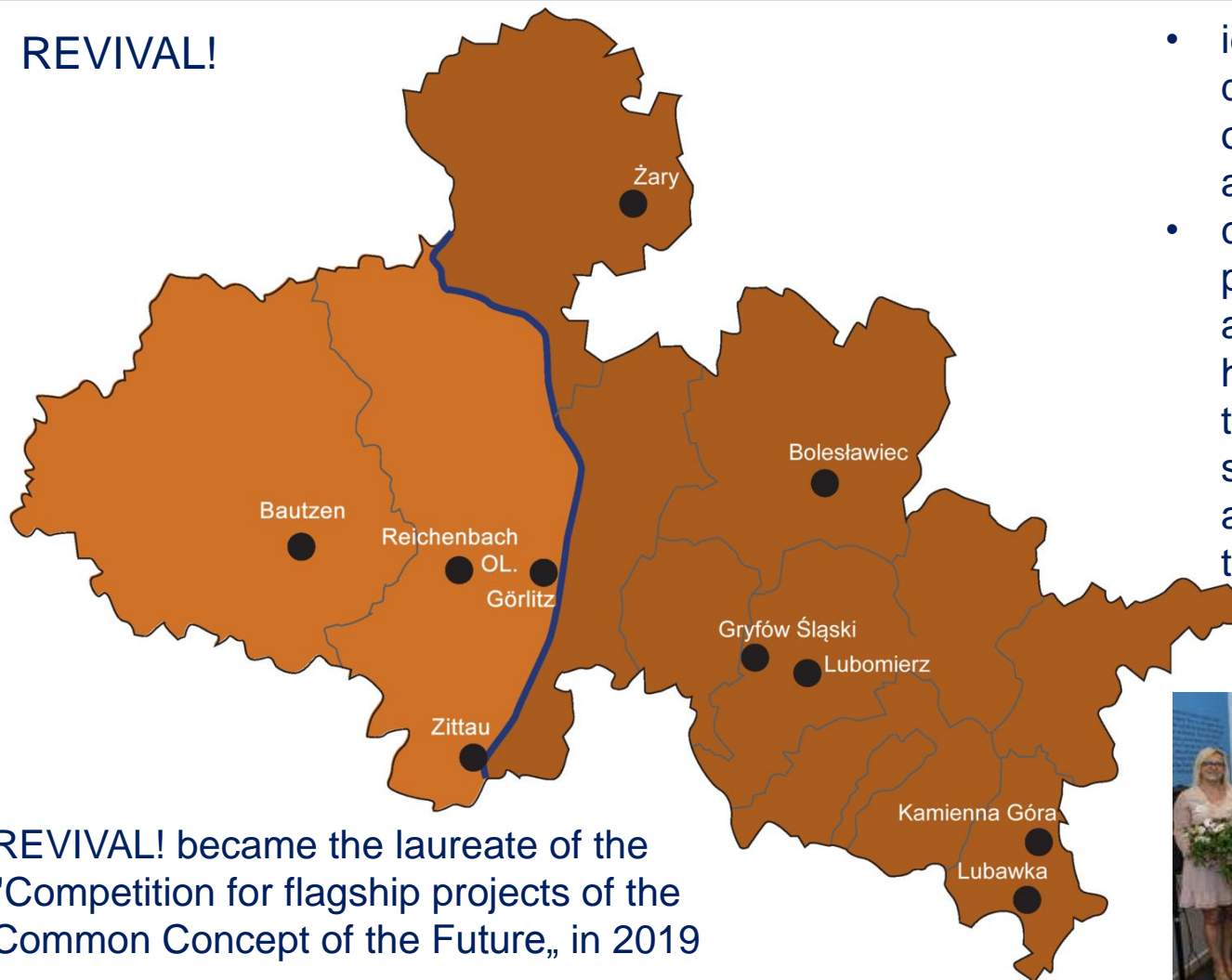
Cultural heritage and revitalization of historical old towns of Lower Silesia and Saxony

<http://revival.ioer.eu/>



- INTERREG Poland-Saxony 2014-2020.
- Lead Partner: Leibniz-Institut für ökologische Raumentwicklung (IÖR) – Drezno, Interdisziplinäres Zentrums für ökologischen Stadtumbau (IZS) – Görlitz
- Time: october 2018 – september 2020,
- Partners:
  - TU Dresden - Internationales Hochschulinstitut Zittau (IHI) - Zittau,
  - Lower Silesia– Institute for Territorial Development,
  - Europastadt Görlitz/Zgorzelec,
  - Cities: Bolesławiec, Bautzen, Gryfów Śląski, Kamienna Góra, Lubawka (Chełmsko Śląskie), Lubomierz, Reichenbach, Zittau, Żary,
- Budget: 1 032 906 euro,
- European Regional Development Fund 85% (877 544 euro).

## REVIVAL!



- identify common development opportunities for small and medium-sized cities
- contribute - through preserving their architectural and cultural heritage and revitalizing their historical centers - to sustainable development and high quality of life on the Polish-German border

REVIVAL! became the laureate of the "Competition for flagship projects of the Common Concept of the Future,, in 2019





# Thank you

Dirk Dreßler, Saxon State Ministry of the Interior  
Dr Maciej Zathey, Institute for Territorial Development

*ESPON workshop, Szczecin 24-25.06.2019*