

# CFV 2030      Metropolises and urban centres as geographic anchors

Strengthen gateway functions  
Better use of complementary functions  
Promote cooperation between cities and their surrounding

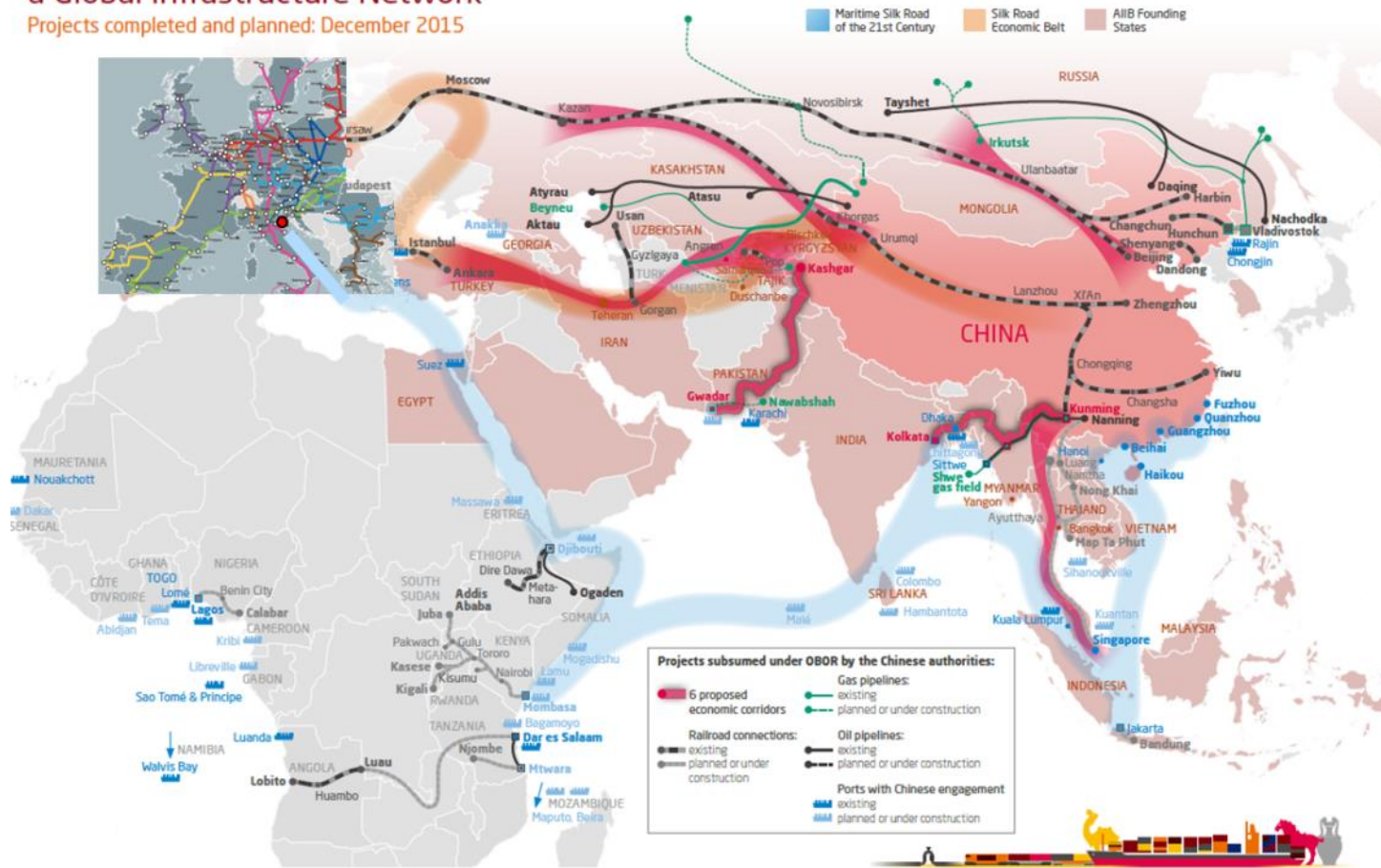
ESPON Workshop June 2019

# Strengthen gateway functions



# The global perspective

MERICS China Mapping  
**One Belt, One Road: With the Silk Road Initiative, China Aims to Build a Global Infrastructure Network**  
 Projects completed and planned: December 2015



© Netherlands Institute of International Relations 'Clingendael', Elcano Royal Institute, Mercator Institute for China Studies, French Institute of International Relations (Ifri).

# New CEF core network corridor axes in the German-Polish Interaction Area

CEF II proposal EU Com 06.06.2018



Quelle: EU / Gemeinsame Landesplanungsabteilung

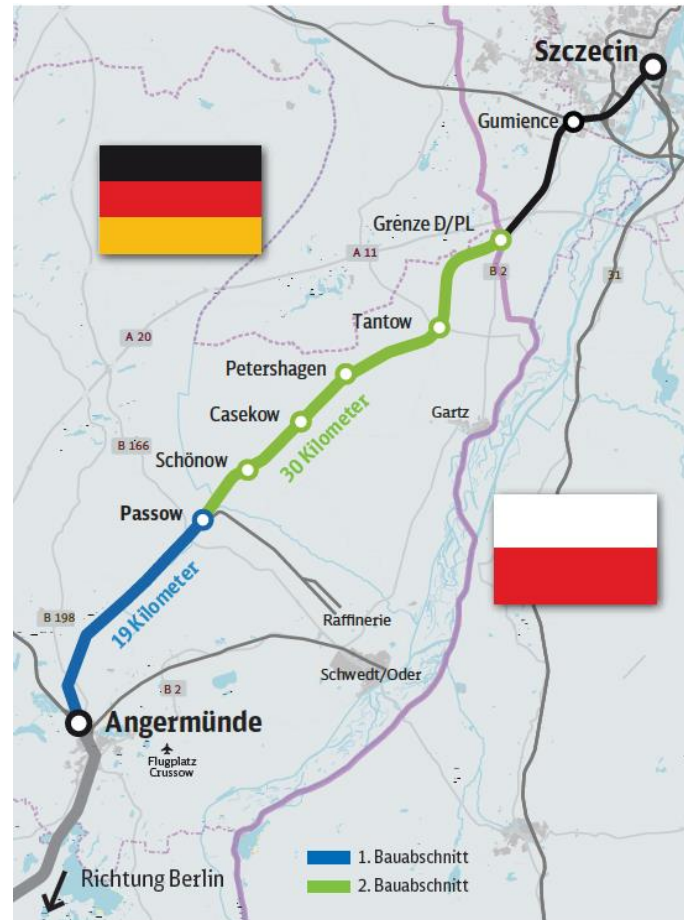
1. Extension  
Berlin – Szczecin
2. Extension  
Magdeburg –  
Falkenberg –  
Wrocław – Katowice
3. Berlin – Wrocław  
pre-determined  
section in the  
comprehensive  
network

# The example Berlin - Szczecin



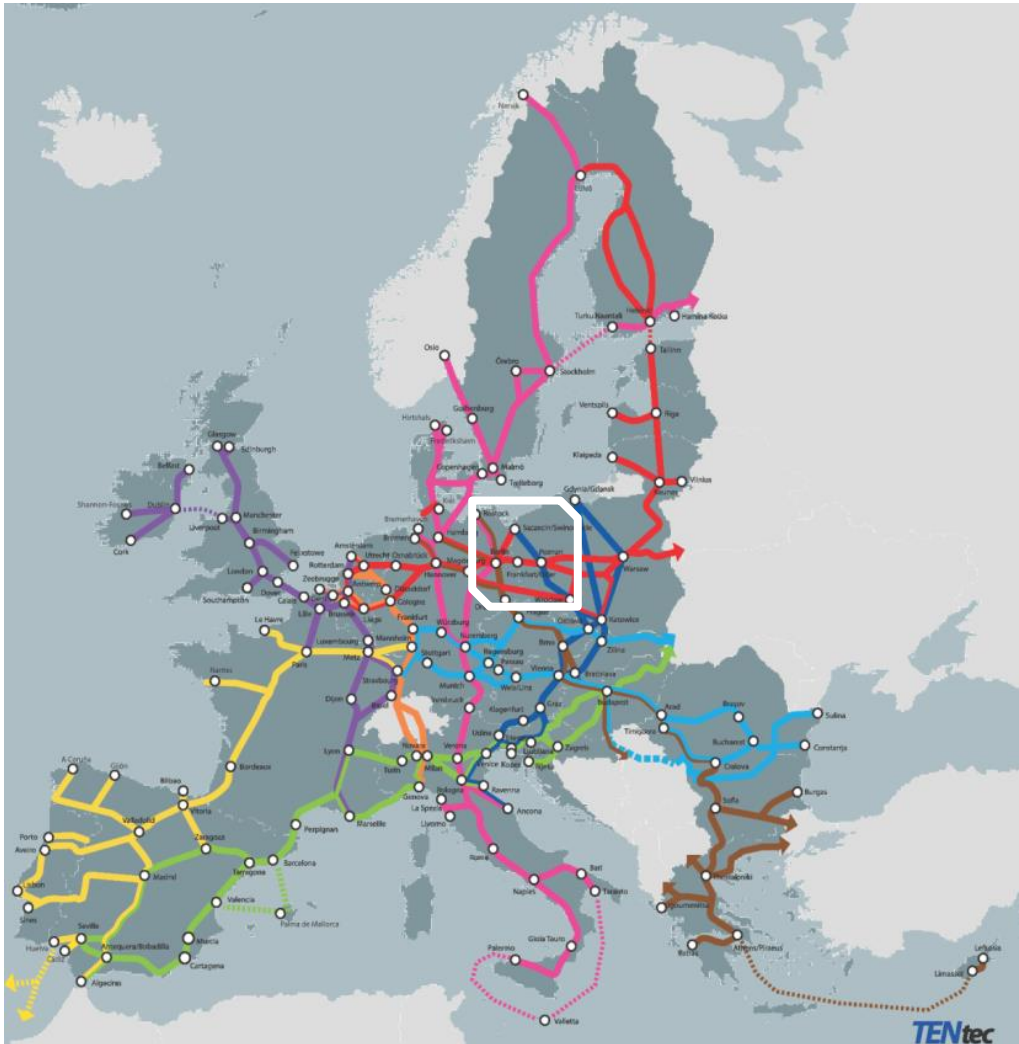
Mobility for tomorrow

upgrading the  
Angermünde– Border – (Szczecin) route



Over the next few years, the route  
between Angermünde and Szczecin  
will be made fit for the future

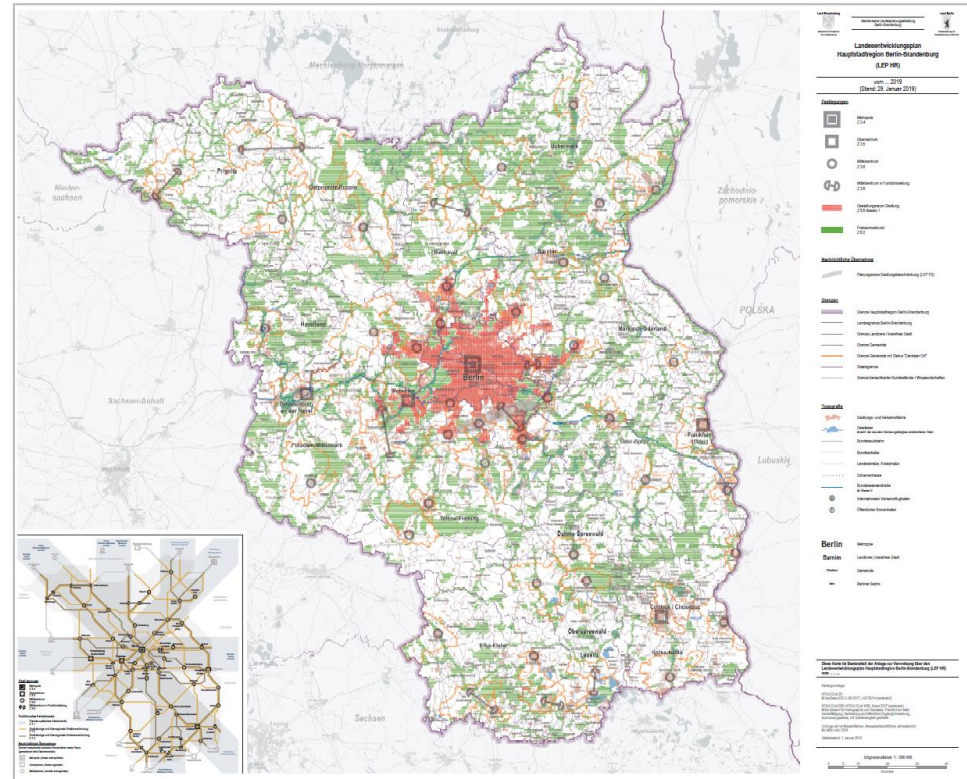
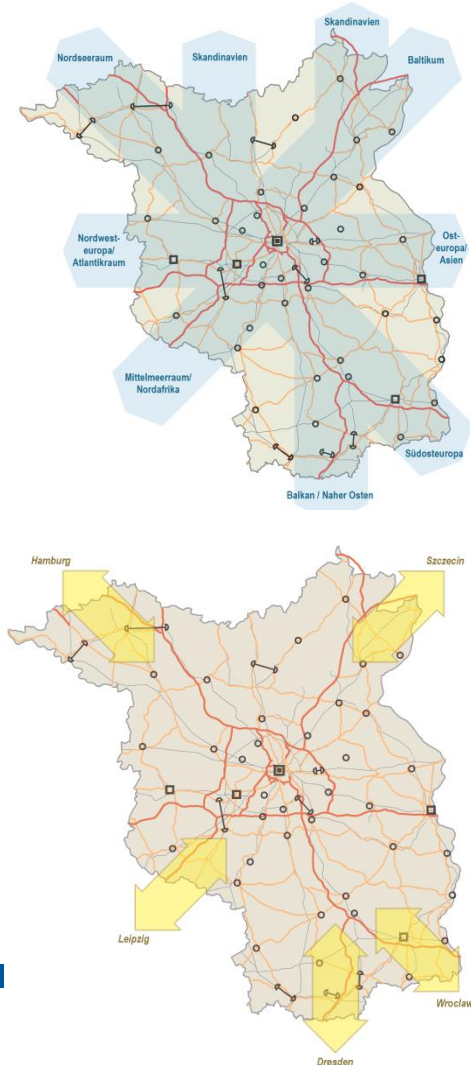
# The German-Polish Interaction Area and the European Transport Network



**Future adjustments to corridor alignment**

*as proposed in CEF II Draft Regulation, currently under negotiation*

# Networking and Cooperation in the Capital Region BE-BB



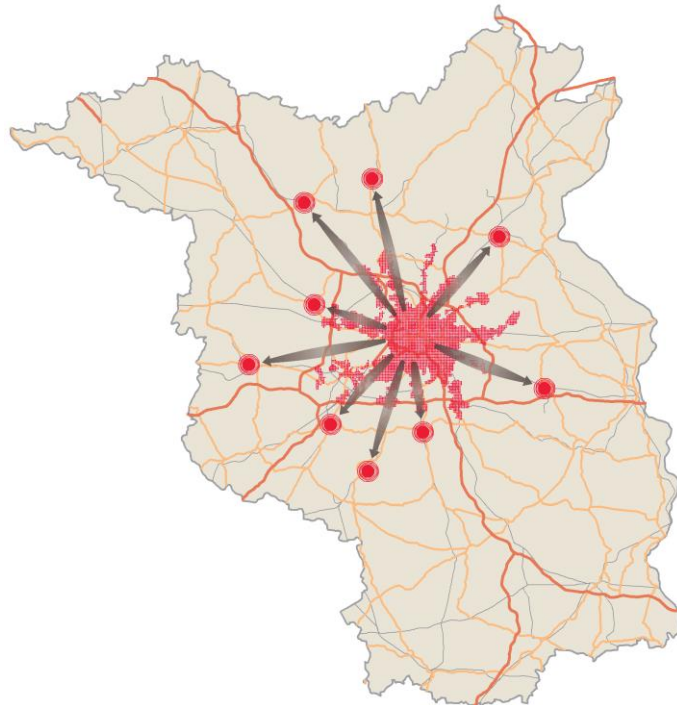
State Development Plan Capital Region - LEP HR (01.07.2019)

# Cross border transport planning

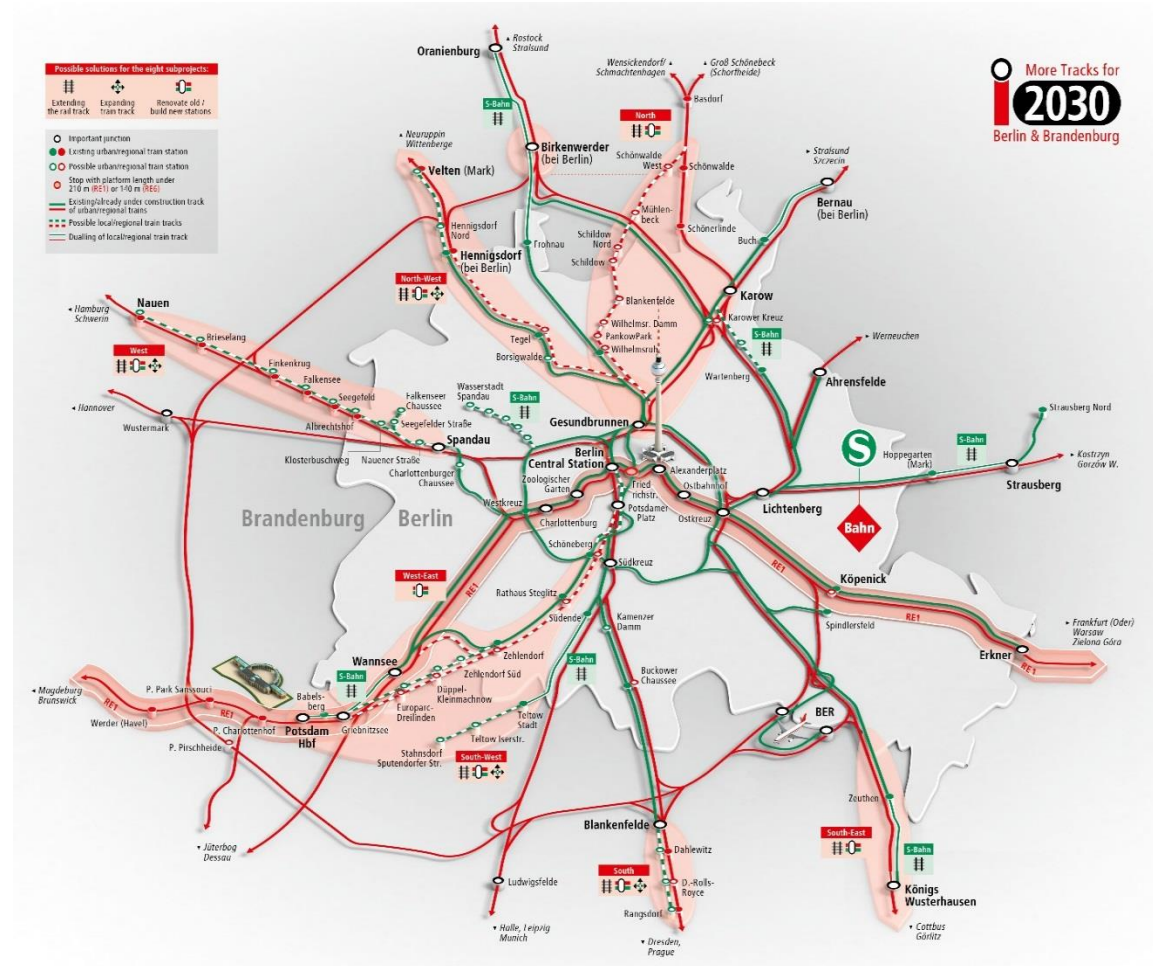




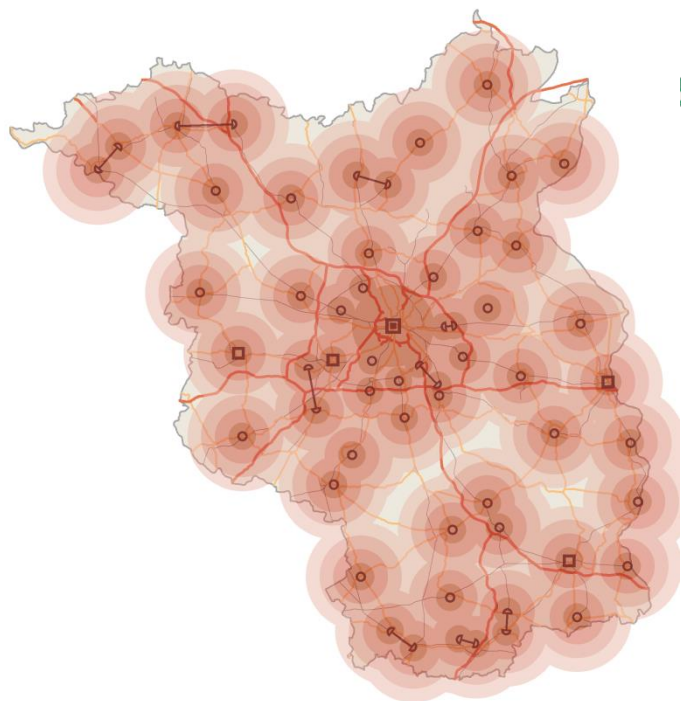
# i2030 – Efficient rail connections for the growing capital region



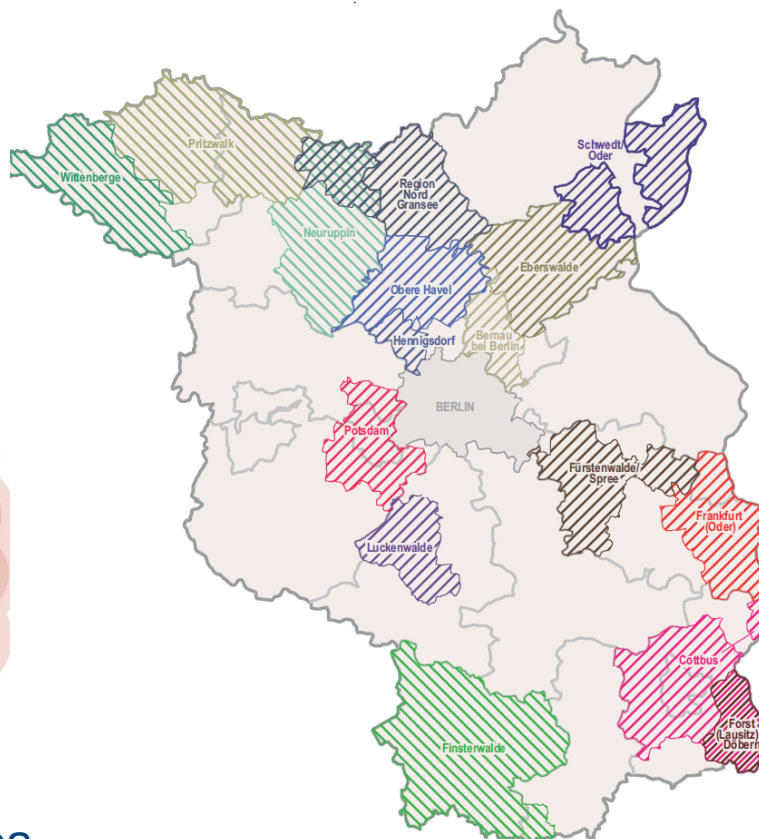
Promote cities in the 2<sup>nd</sup> row around the metropolis



# Competition for urban – rural cooperation



Cities - anchors in the area



## STADT·UMLAND·WETTBEWERB BRANDENBURG



### Übersicht ausgewählte Strategien (Lead Partner)

-  Hauptverfahren
-  Schnellläufer

#### Grenzen

-  Bundesland
-  Landkreis/kreisfreie Stadt

Kartenbasis: © GeoBasis-DE / BKG 2014 / LGB 2014, LBE 02/14,  
Datenbasis: ML20, LBV36 2015



Dezernat Raumbeobachtung und Stadtmonitoring | 2015