

Inspire Policy Making with Territorial Evidence

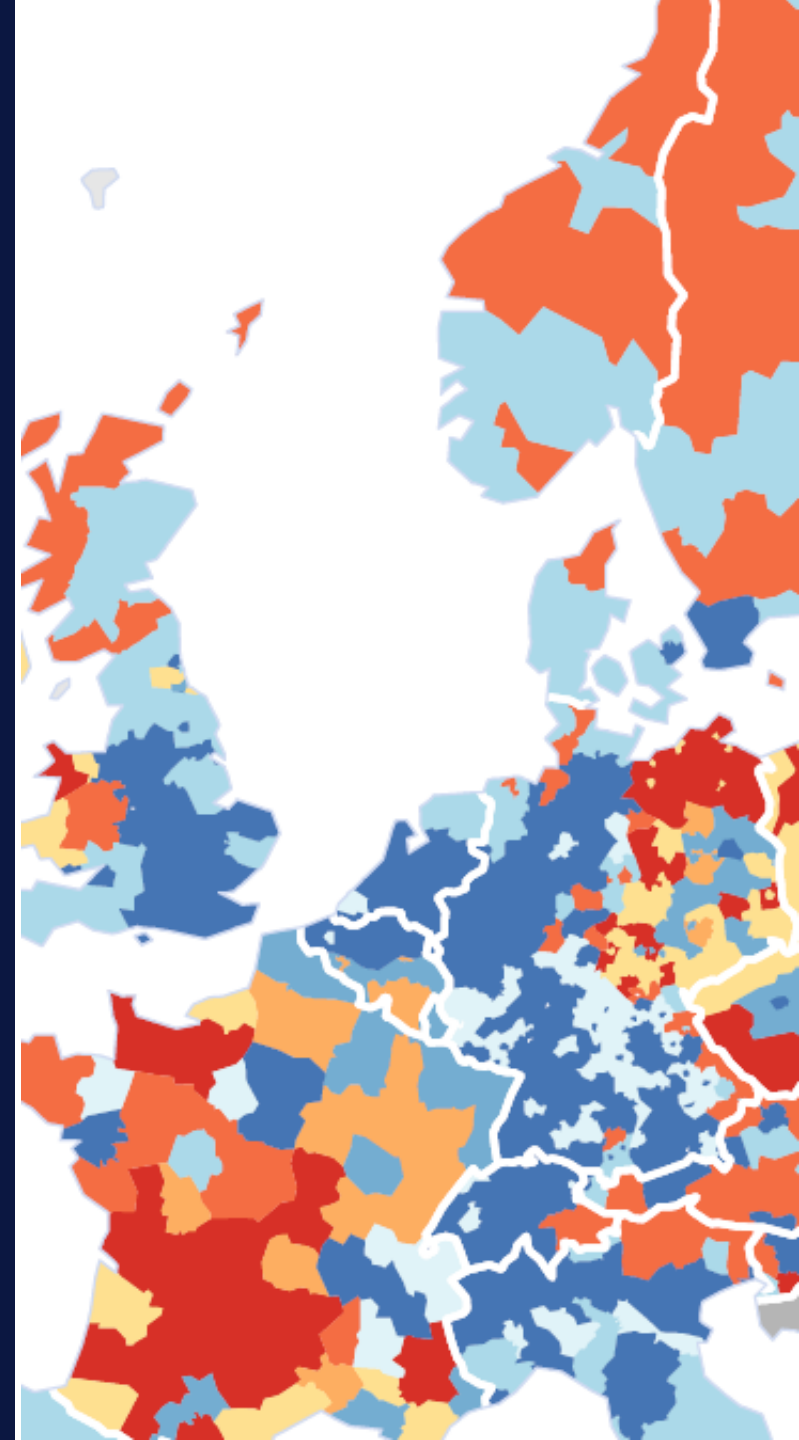
// Implementation of the Single Operation- Progress of Activities

Ilona Raugze, Director, ESPON EGTC



1

ESPON outputs 2017



Applied research and Targeted analyses

Activities

SMEs in European
regions and cities

Inner peripheries

Flows

The geography of
new employment
dynamics

The world
in Europe

Sustainable future

Territories and low
carbon economy
approach

Possible European
Territorial Futures

Circular economy, 100% renewables
Property markets

Governance

SPIMA

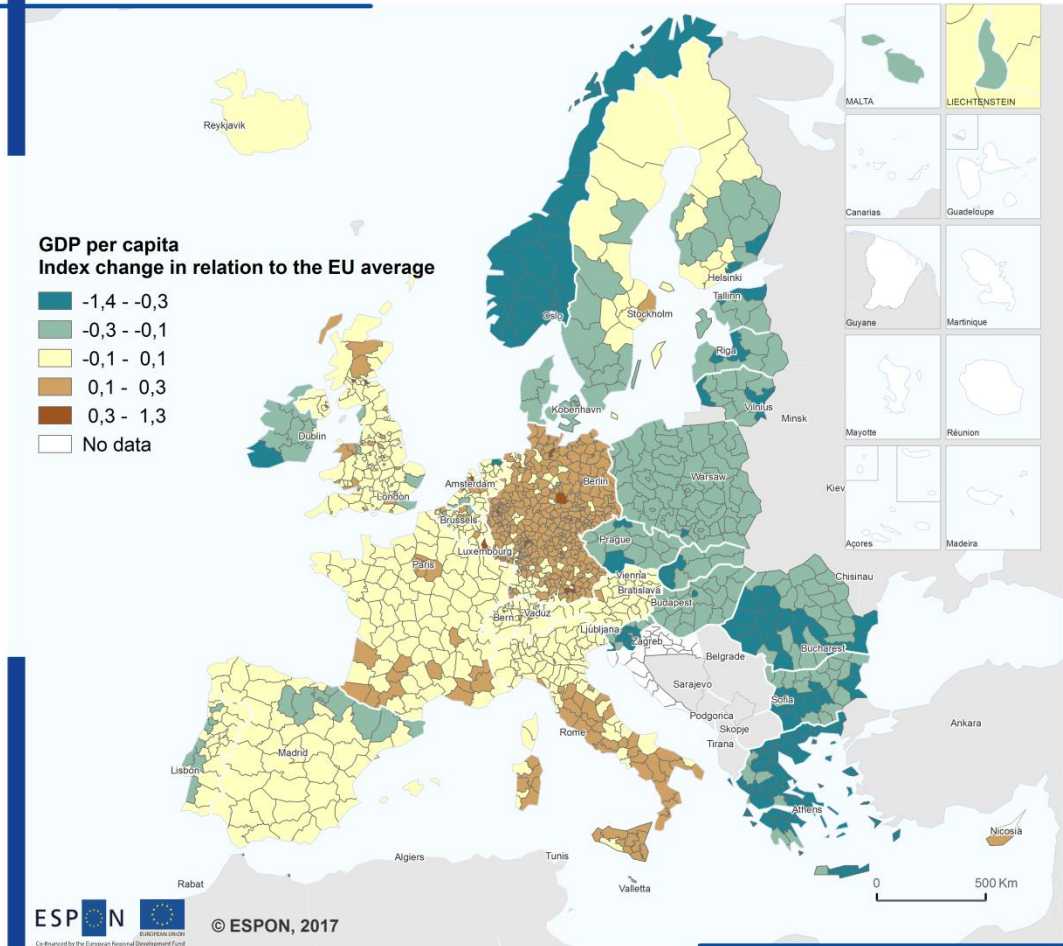
ACTAREA

ReSSI



EU Territorial Review

Tentative cohesion effects of European disintegration 2030

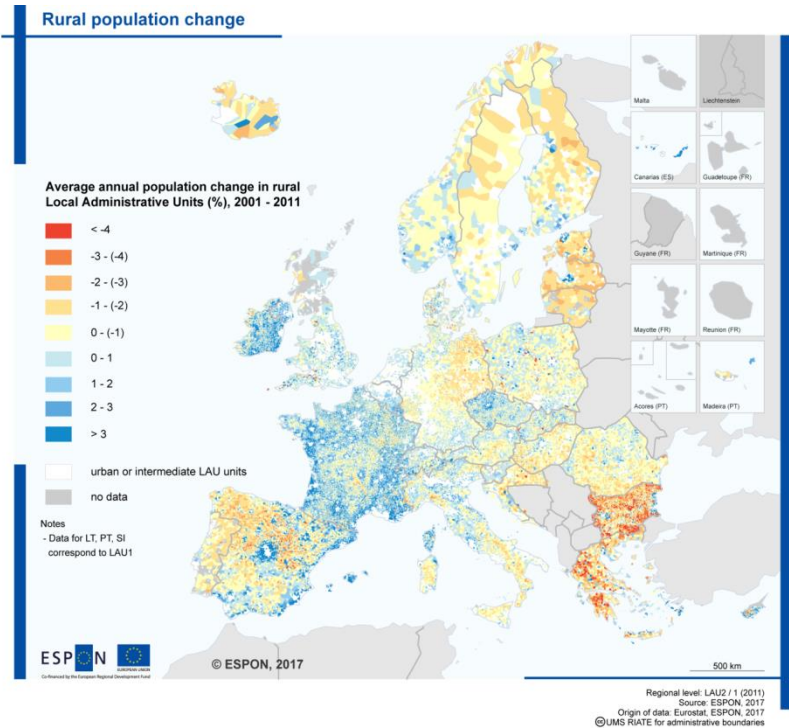


Regional level: NUTS 3 (version 2006)
Source: Spiekermann and Wegener Urban and Regional Research (S&W), Territorial Futures, 2017
Origin of data: SASI Model
CC - UMS RIATE for administrative boundaries

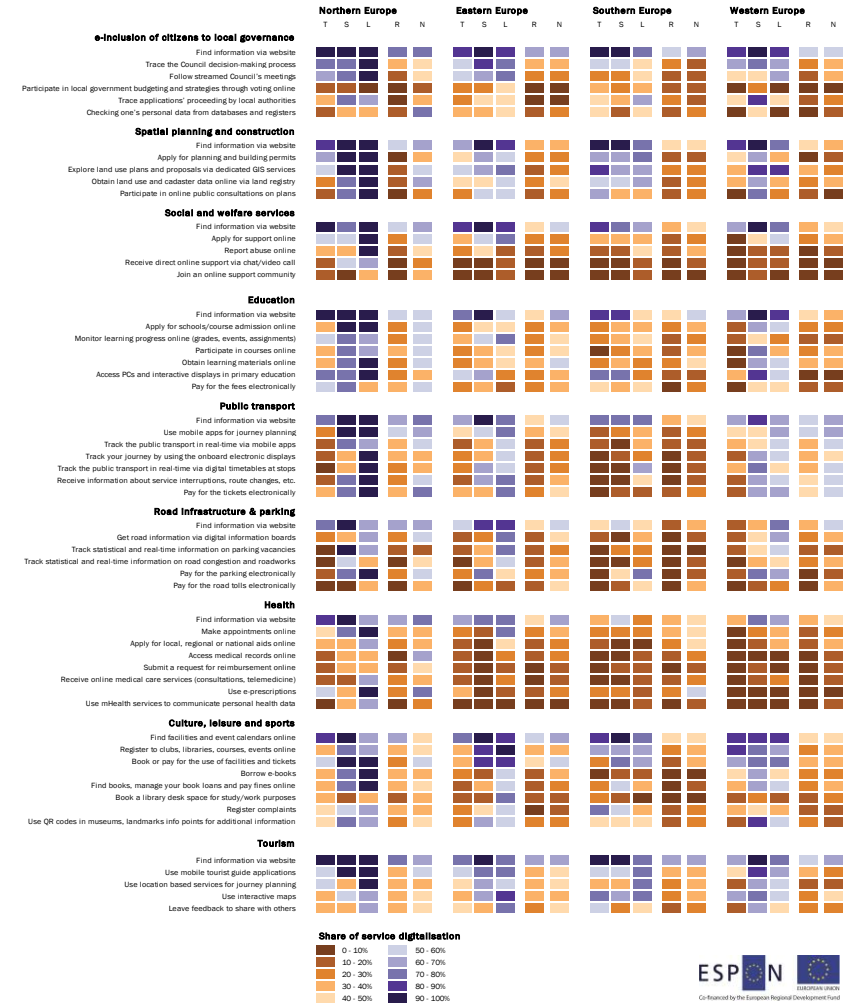


Policy briefs

- Shrinking rural regions in Europe
- Digital transition of public services



Share of services that are digitalised at the levels of towns (T), small and medium-sized cities (S) and large cities (L); at regional level (R) and/or at national level (N)



Ex-ante TIA workshops

Date	Responsible institution	Workshop
March 6	CoR	Smart Specialization Strategies (RIS3): impact for regions and inter-regional cooperation
March 17	DG REGIO/DG MOVE	Revision of Directive 2000/59/EC on Port Reception Facilities for ship generated waste and cargo residues
April 5	DG REGIO/DG ENV	Development of Minimum Quality Requirements for Reused Water in Agricultural Irrigation and Aquifer Recharge (new EU legislation)
May 11	DG REGIO/DG MOVE	Revision of Directive 2009/33/EC on the promotion of clean and energy-efficient road vehicles



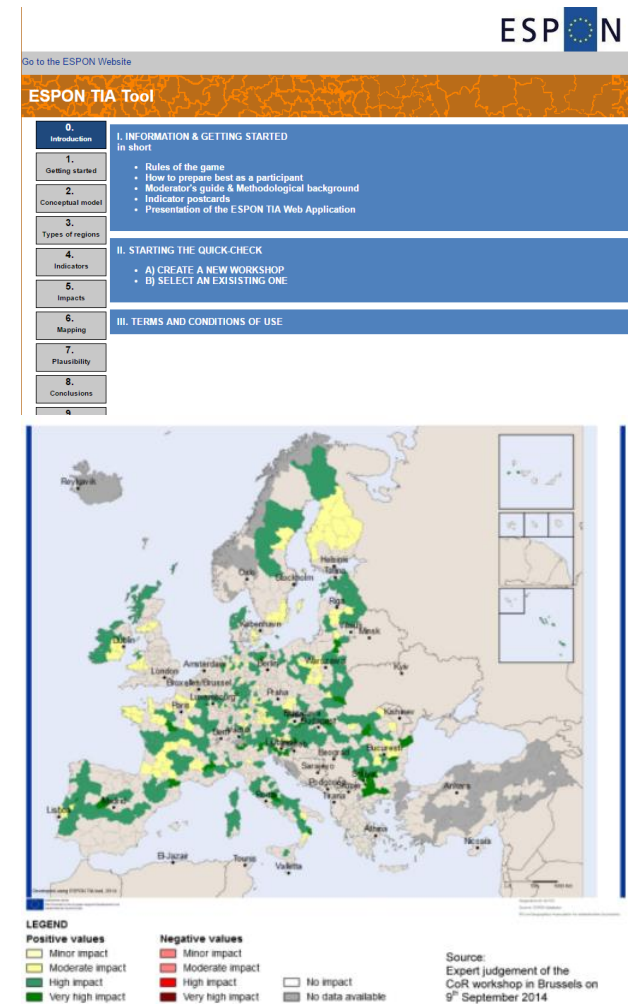
Results of TIA workshops

- Positive opinion of the Regulatory Scrutiny Board (RSB) for the Impact Assessment for the revision of Port Reception Facilities

“The TIA has been much appreciated by the Board”
(DG MOVE)

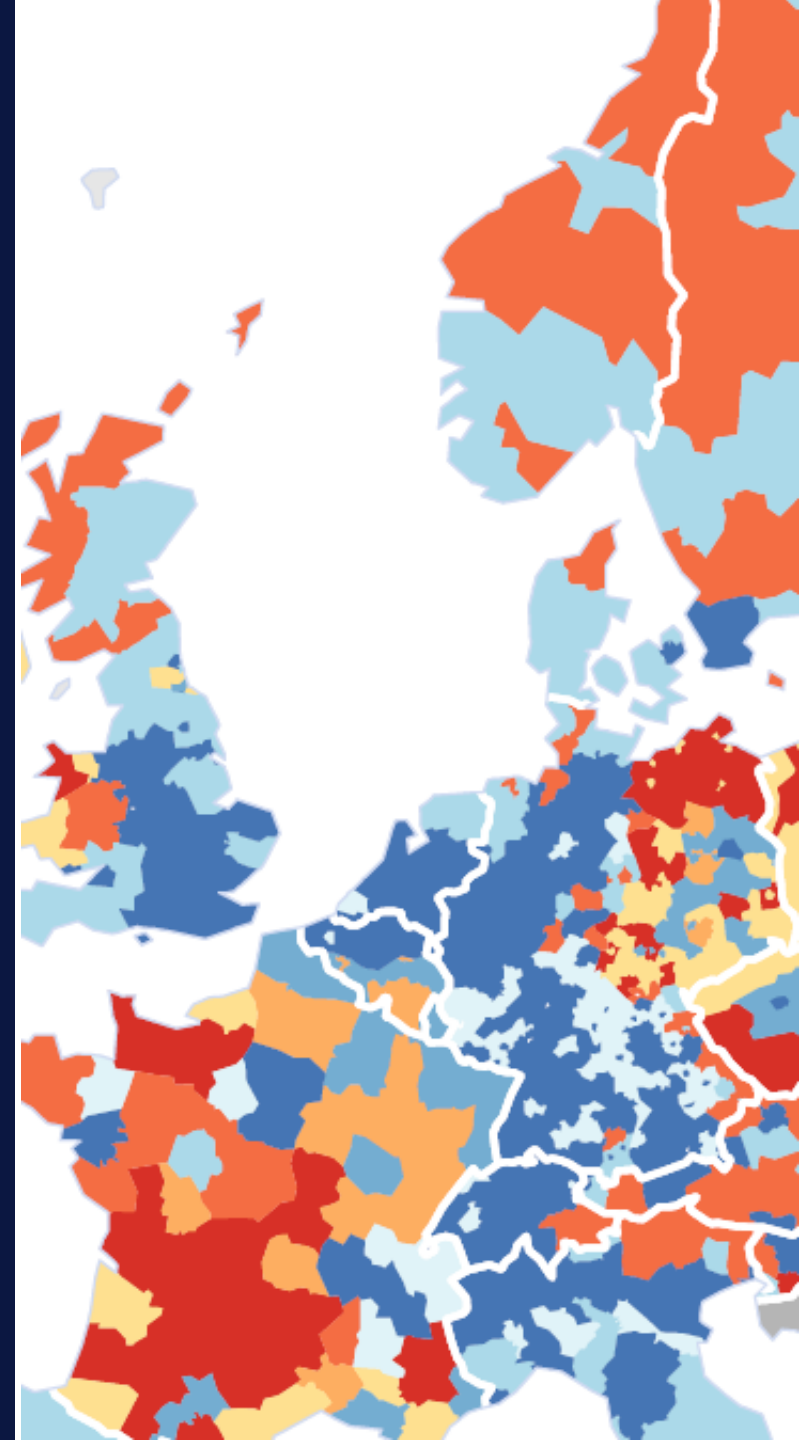
- The Regulatory Scrutiny Board issued a positive opinion (with comments) on the Impact Assessment of the clean vehicles directive

“It was certainly useful to have the information from the TIA in the IA report! It helped to underline the fact that there is no particular regional identity that is hit harder than others, which was taken into account by the board.” (DG MOVE)

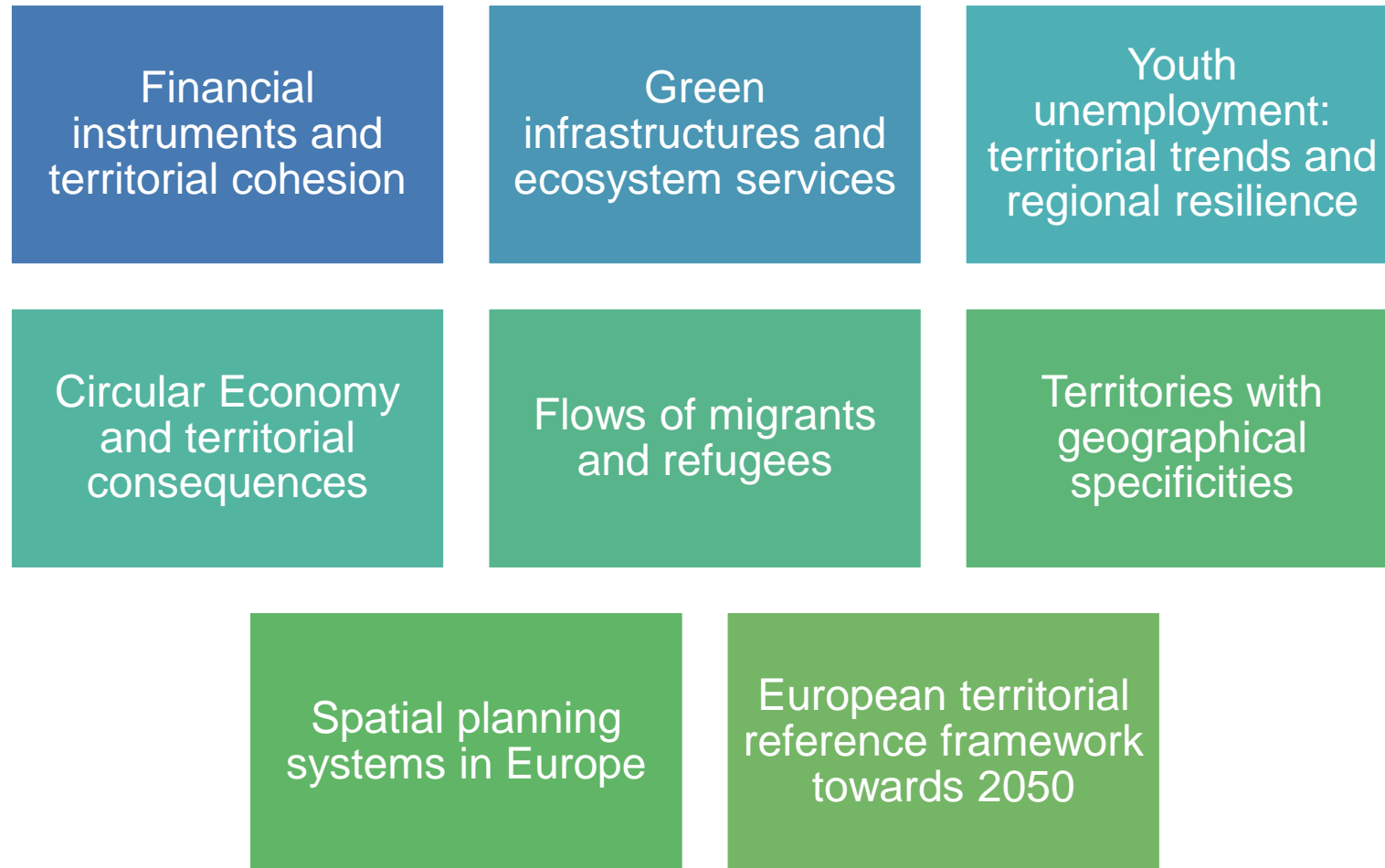


2

Ongoing ESPON activities 2018-2019



Applied research



Targeted analyses

Linking protected areas to territorial development - networks of high-biodiversity

Territorial scenarios for the Baltic Sea Region

Territorial and urban potentials connected to migration and refugee flows

Alps2050 – Common spatial perspectives for the Alpine Space. Towards a common vision

Cross-border Public Services

Future Digital Health in EU

Cultural Heritage as a strategic territorial development resource

Territorial Impact Assessment for Cross-Border Cooperation

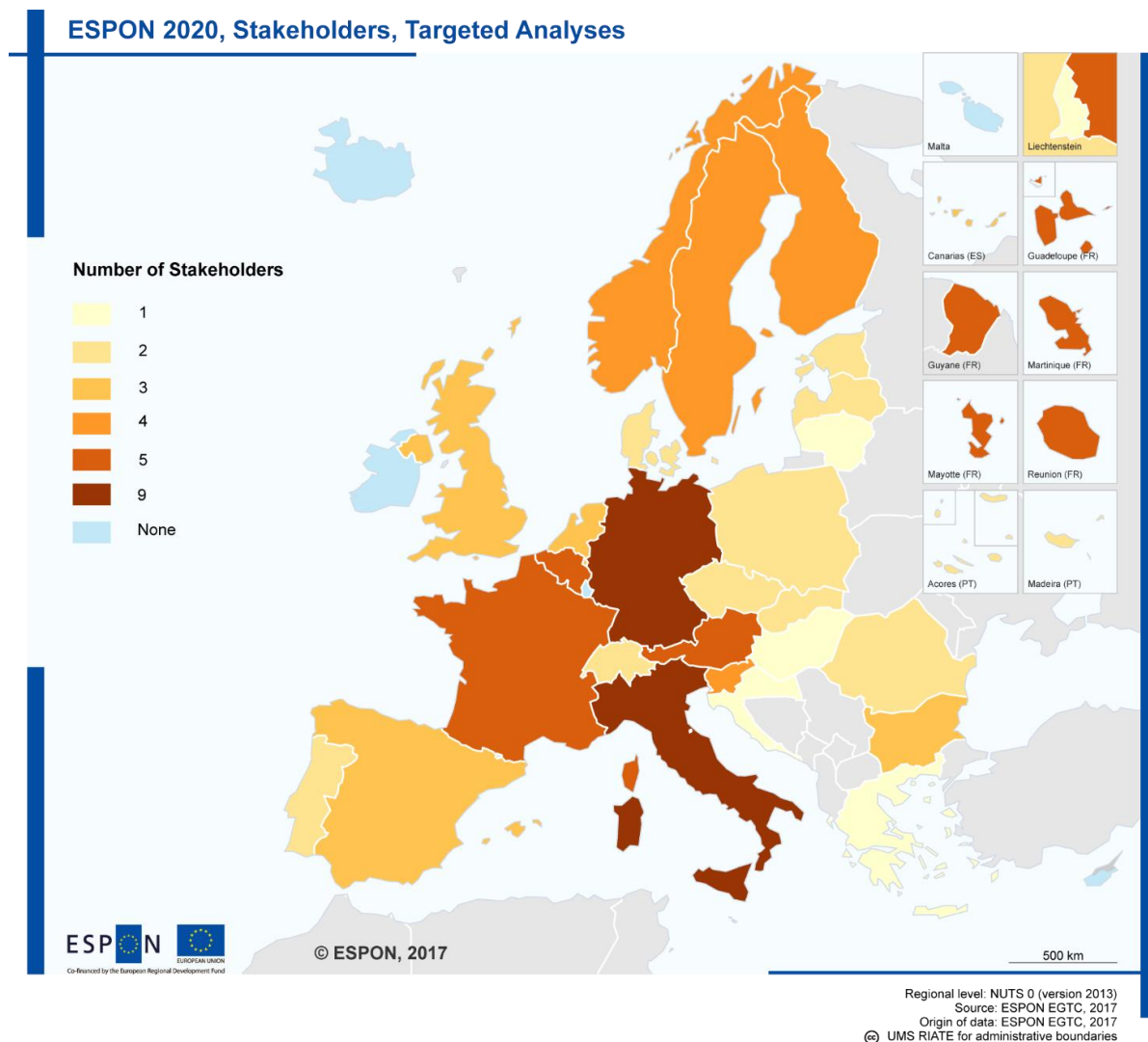
Maritime spatial planning and land-sea interactions

Potentials of big data for integrated territorial policy development in the European growth corridors

Improving Urban-Rural connectivity in non-metropolitan regions



Geographical coverage so far...84 stakeholders



Monitoring and tools

**Database
portal**

**TIA web-
application**

**Online
MapFinder**

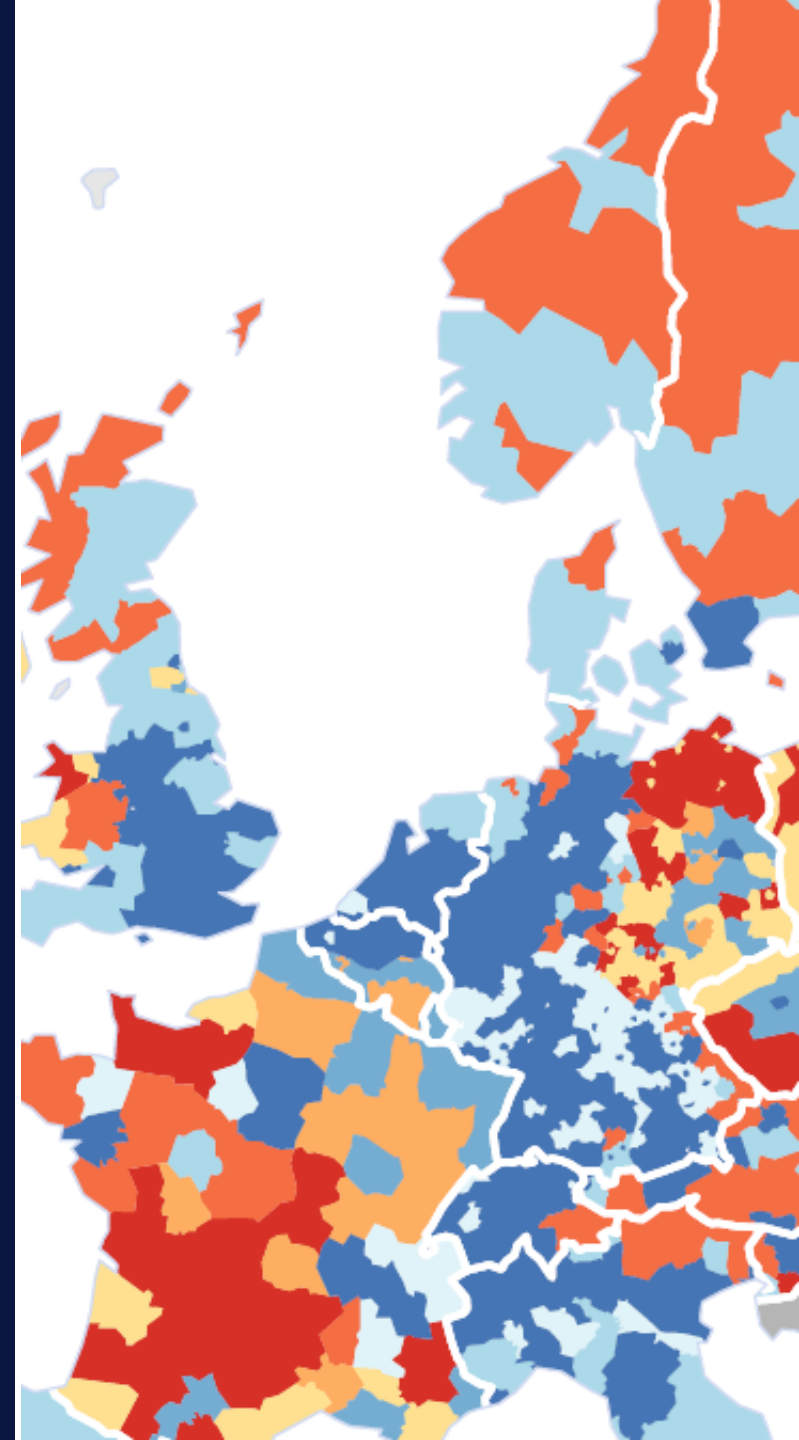
**Monitoring
Platform**

FUA tool

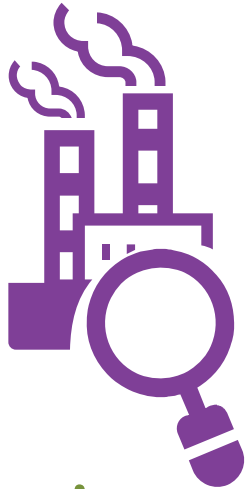


3

What's next...



6 Applied research activities



Targeted Analyses

- ***Do not miss it!***
11 more activities to be selected during ESPON 2020 (6 in 2018)
- ***Next cut-off dates***
26 January 2018 and June 2018
- ***Peer learning workshops***
Stakeholders as ambassadors and multipliers...
- ***Join LinkedIn group for Partner search***



European outreach events

ESPON workshop
on indicators for
integrated territorial
development
(January 2018)

ESPON seminar in
Bulgaria
(28 May-1 June
2018)

ESPON Scientific
conference
(Autumn 2018)

ESPON seminar in
Austria
(5-6 December
2018)

ESPON peer-
learning workshops
(throughout the
year)



Transnational outreach activities



Help us to serve you better



www.espon.eu/survey2017



// Thank you

Ilona Raugze, ESPON EGTC

This presentation will be made available at: www.espon.eu/tallinn2017