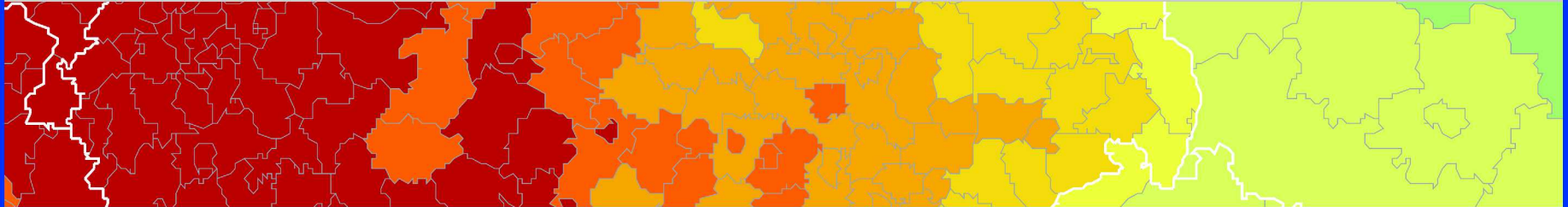




Inspire policy making by territorial evidence



ESPON Seminar

“Territories Acting for Economic Growth: Growth:

**Using territorial evidence to meet
challenges towards 2020”**

Integrated Strategies in regional development

Graziella Guaragno- Emilia-Romagna Region



EUROPEAN UNION
Part-financed by the European Regional Development Fund
INVESTING IN YOUR FUTURE

Integrated territorial strategies

territory is not only a physical support, but a **set of resources** that are both material and intangible, natural and anthropogenic, collective by nature, public and private, which are **the potential for development**

Territory is also the matching point of all policies of all levels and any sector

Planning has to manage this complexity into an integrated territorial strategy

Moreover territorial Planning is more and more important to merge European funds possibilities with local economical and social resources

Integrated territorial strategies

Regional territorial policies

ESIF programming

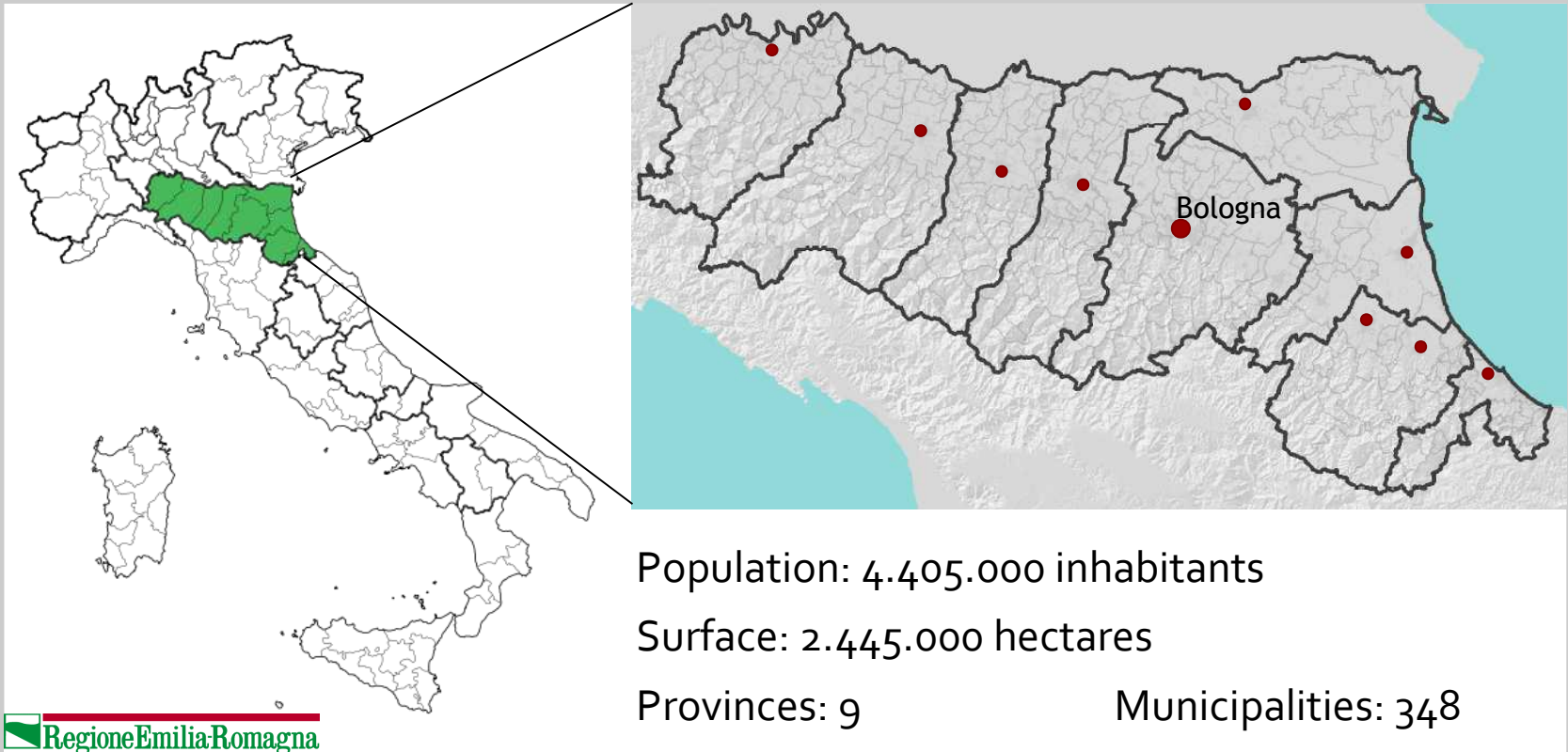
TCE projects

Municipal strategic
plans

Macro regional strategies

Emilia-Romagna Region

Location and basic data



Emilia-Romagna Regional Territorial Plan

The PTR defines the objectives to assure development and social cohesion, improve the competitiveness of the regional territorial system, guarantee the reproducibility, the qualification and the optimization of social and environmental resources (regional law 20/2000).



The PTR is a reference point for

- ➔ policies of all sectors
- ➔ all spatial planning instruments

Emilia-Romagna Regional Territorial Plan

PTR MISSION

to include Emilia-Romagna in the European space, as a main regional relationship system to ensure regional cohesion, to internationalize local systems, to re-generate and innovate the Territorial Capital, to increase cohesion and competitiveness within the global scenario

Setting the strategy: 4 PRIORITIES

1. to promote a knowledge society and a diffused knowledge system
2. to enhance social networks and the “community dimension”
3. to manage city networks
4. to strengthen ecosystem networks



PTR Territorial dimension

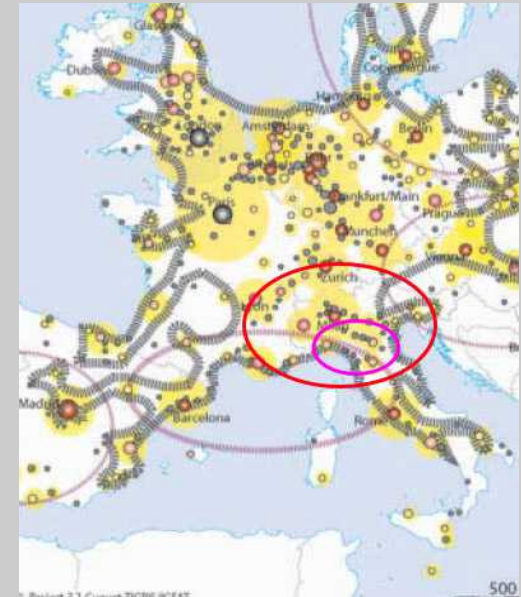
Spatial structure and urban hierarchy in 2030



Trend Scenario



Competitiveness-oriented Scenario



Cohesion-oriented Scenario

Urban typology:

- Global City
- European Engine
- Strong MEGA
- Potential MEGA
- Weak MEGA
- Regional/Local City

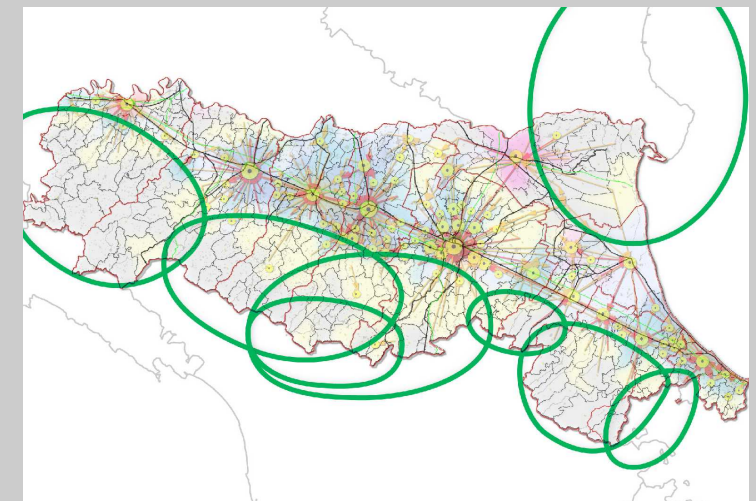
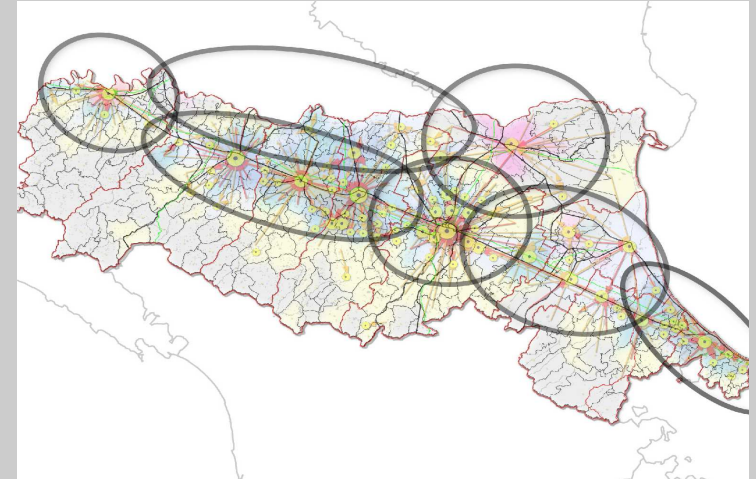
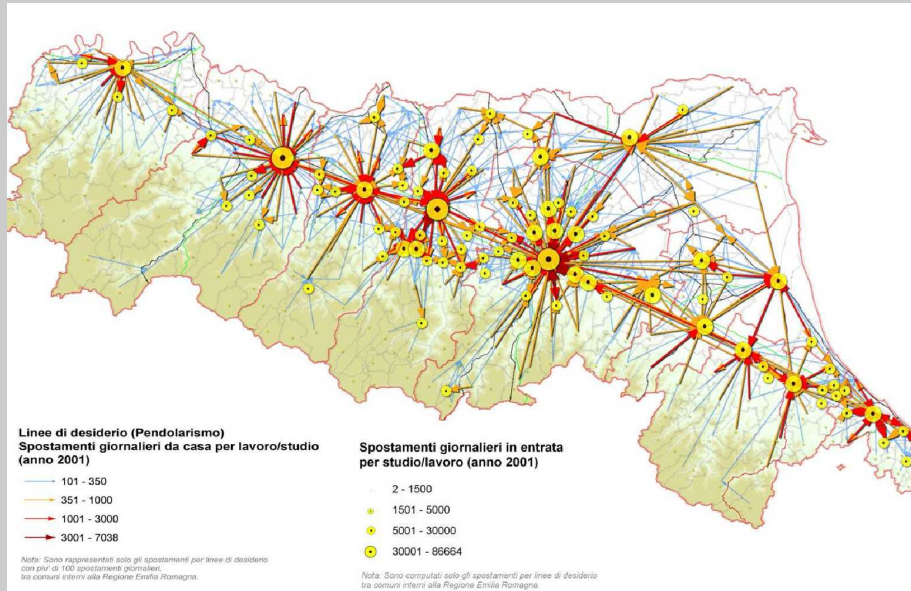
● Attraction and polarisation potential of metropolitan area

● Area of concentration of flows and activities



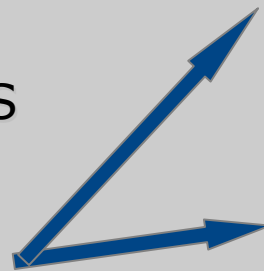
ESPON approach and scenarios

PTR Territorial dimension

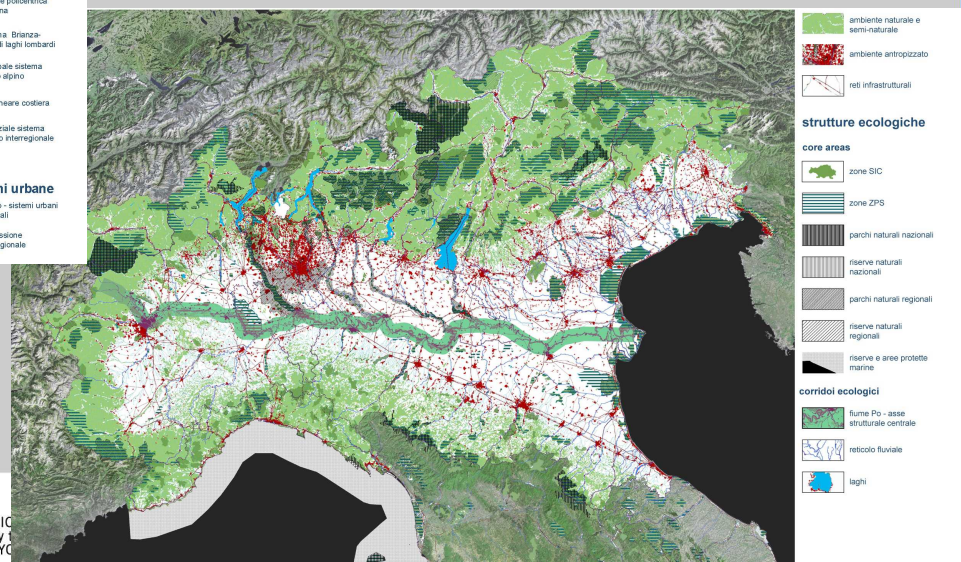
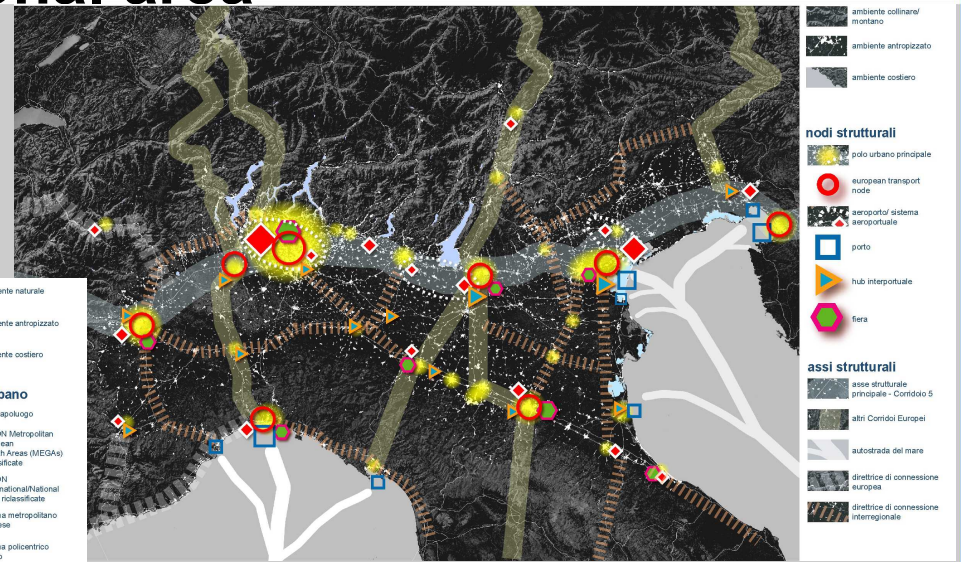
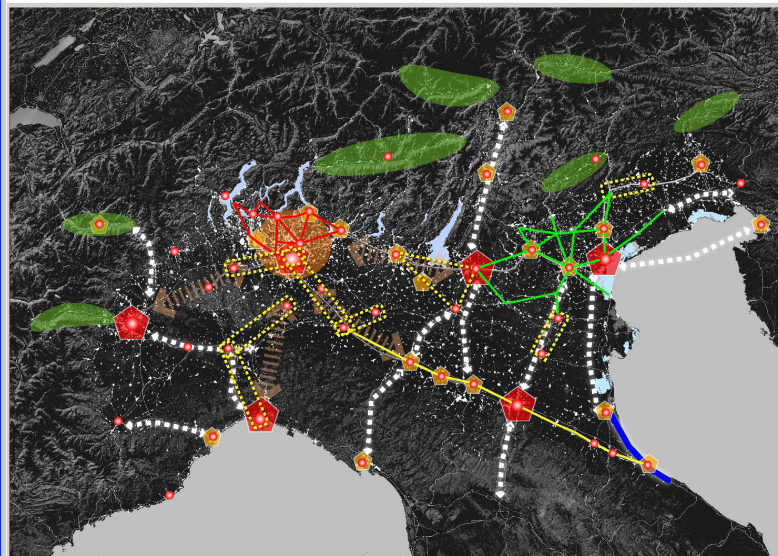


FUNCTIONAL URBAN AREAS

WIDE AREAS SYSTEMS



Alpine-Po valley interregional area



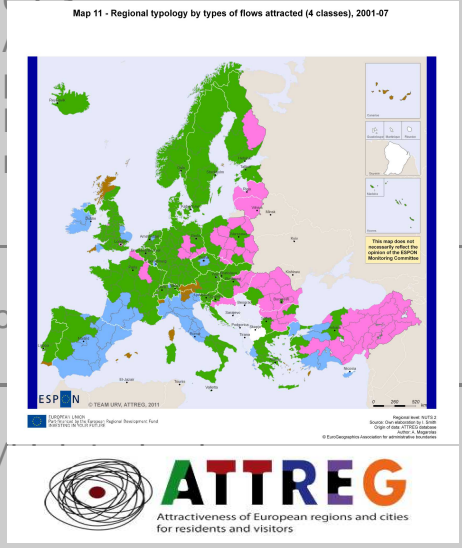
PTR Territorial Capital

The Regional Territorial Plan objectives

TC assets	territorial quality	territorial efficiency	territorial identity
ECOSYSTEM-LANDSCAPE CAPITAL	territorial integrity and continuity of the ecosystem network	territorial safety and capacity for regeneration of natural resources	beauty and variety of the landscapes and biodiversity
SOCIAL CAPITAL	wellbeing and high quality of life for the population	social equity and reduction in poverty	multicultural integration, high participation and sharing of collective values (civicness)
COGNITIVE CAPITAL	high quality education, training and research	high capacity in the regional system for innovation	attraction and retention of knowledge and skills in the territories
SETTLEMENT-INFRASTRUCTURE CAPITAL	orderly development of land, health and livability in urban systems	high levels of accessibility on the local and global scale, low consumption of resources and energy	sense of belonging of citizens and the city as a public place

PTR monitoring system

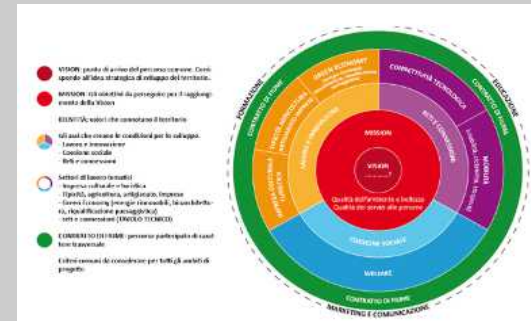
PTR objectives for cognitive capital	Indicators		
<p>Educational, capacity building and research system of high quality</p>	<p>C1.1 Population aged 25 – 64 based on education level</p>	<p>C1.2 30-34 age people with a level of education 5-6</p>	<p>C1.3 Lifelong learning: participation figures for the 25 to 64 age group in educational training</p>
<p>High innovation capacity of the regional system</p>	<p>C2.1 Investment in Research & Development part of GDP</p>	<p>C2.2 Reduced market or</p>	<p>C2.3 Market or</p>
<p>Attraction and holding of knowledge and competences within regional territories</p>	<p>C3.1 Employment by level of education</p>	<p>Employment in high and medium/low manufacturing out of total labour</p>	



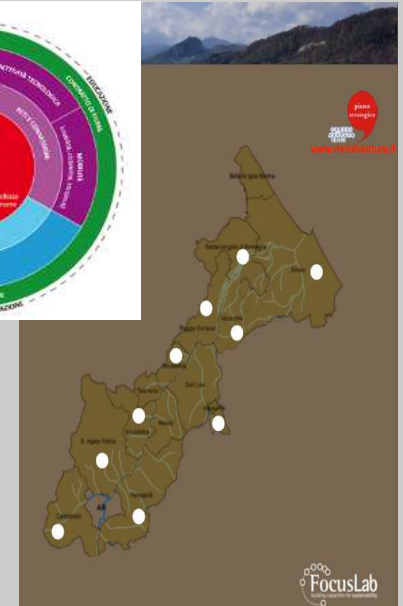
Municipal Strategic Plans



Bologna



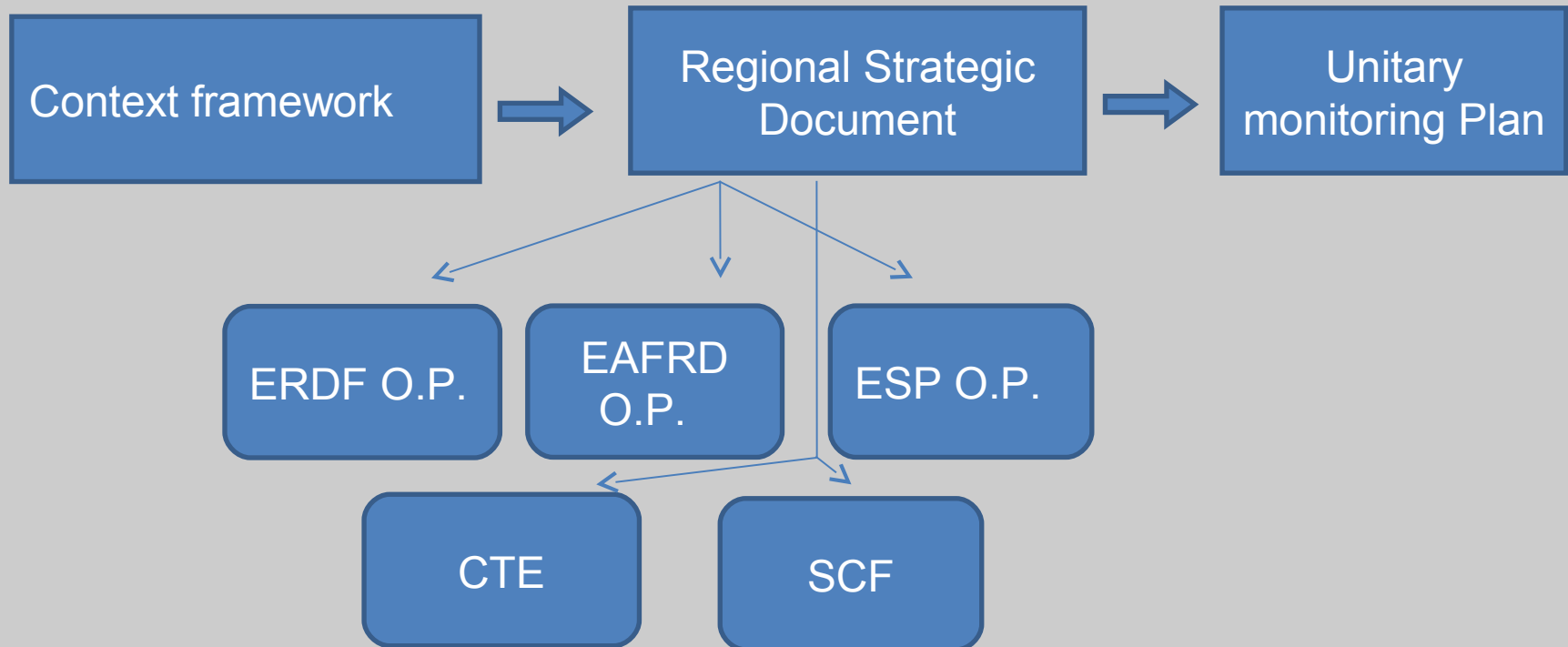
Rimini



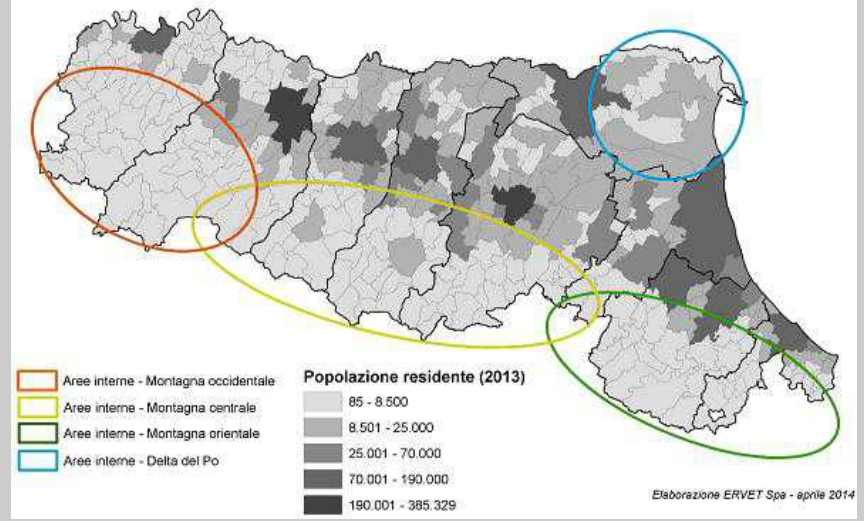
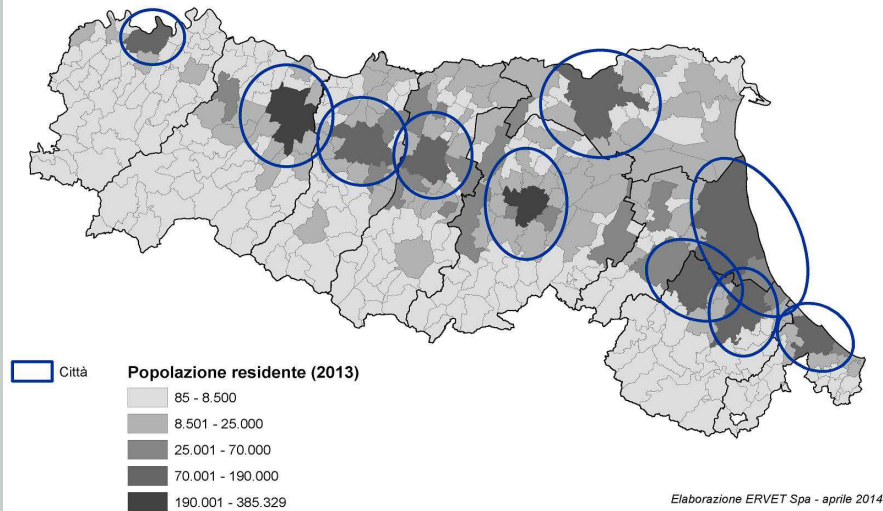
Reggio-Emilia



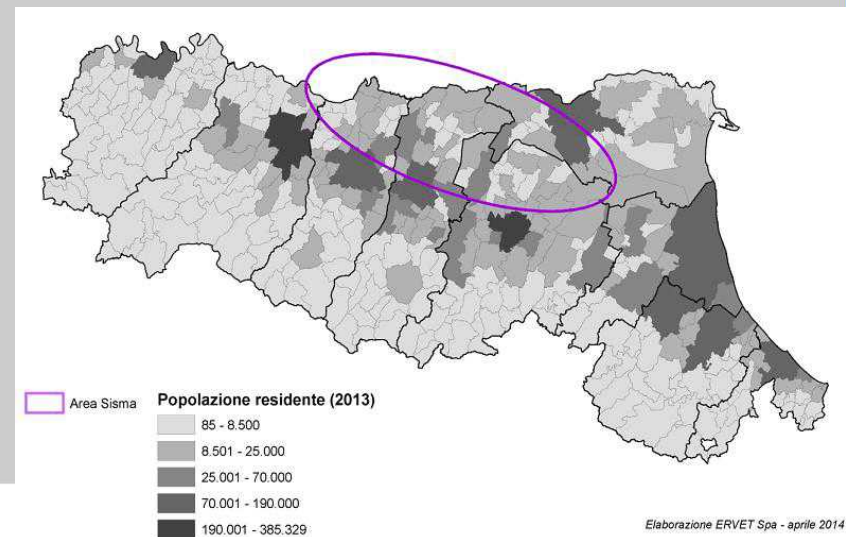
Regional Strategic Document (DSR)



DSR territorial dimension



- Town
 - Inner areas
- + Herthquake area



Macro regional strategies



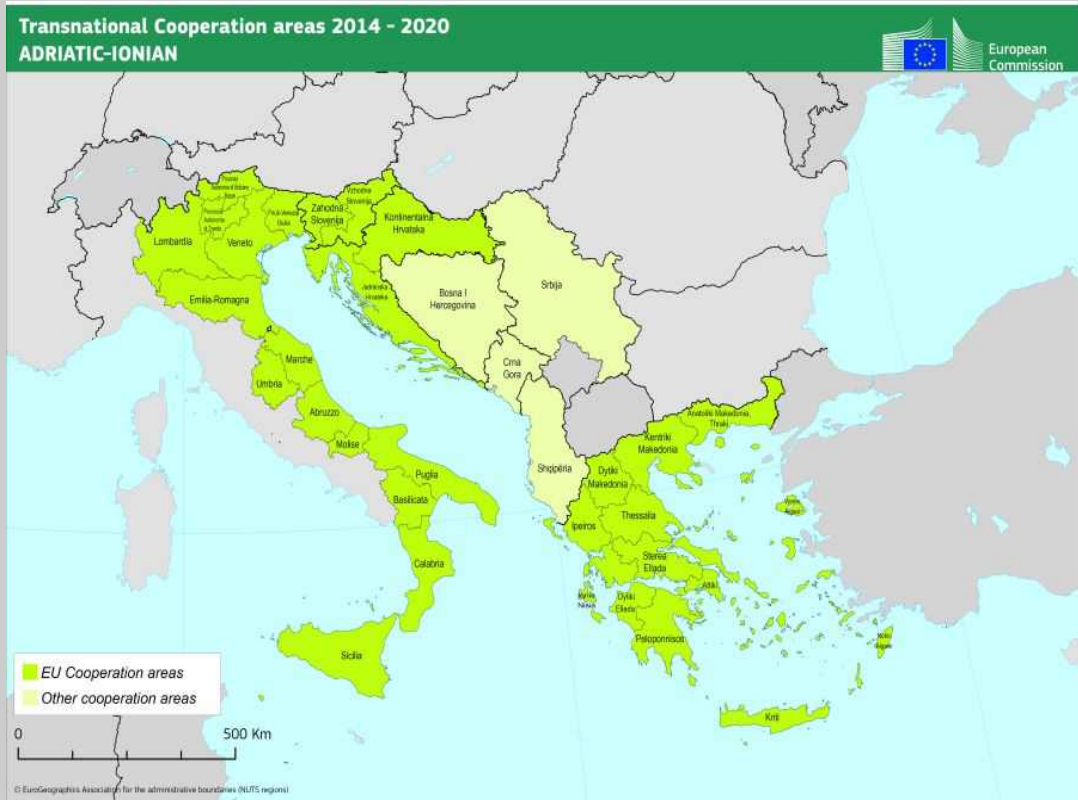
EUSAIR Strategy

8 countries involved:

4 EU countries: Croatia, Greece, Italy, Slovenia;

3 candidate countries: Albania, Montenegro, Serbia;

1 potential candidate country: Bosnia and Herzegovina



The area affects a region primarily defined by the **Adriatic and Ionian Maritime Strategy**, also covering important **terrestrial surface area**. EUSAIR treats the marine, coastal and terrestrial areas as interconnected systems

Integrated strategy advantages

- **a place-based development**, able to optimise local potentials
- **a long term perspective** to face the fast changing Society demands ensuring an overall sustainability
- **the inter-sectorial integration of policies**, in order to balance different needs and expectations, exploiting synergies and managing potential conflicts
- **an integrated funding approach**, for an effective public intervention able to merge local economical and social resources

Need to strengthen



a territorial dimension in policy making

The richness of EU is its **territorial diversity**

Territorial evidence should be tailored on local specificities, also providing detailed analysis and focus on specific areas



a policy oriented territorial analysis

Policy makers, stakeholders and practitioners involvement during analysis definition, development and validation

Thanks for your attention

www.regione.emilia-romagna.it