

// ESPON 2020 Database Portal

Sharing Essential ESPON Data

1

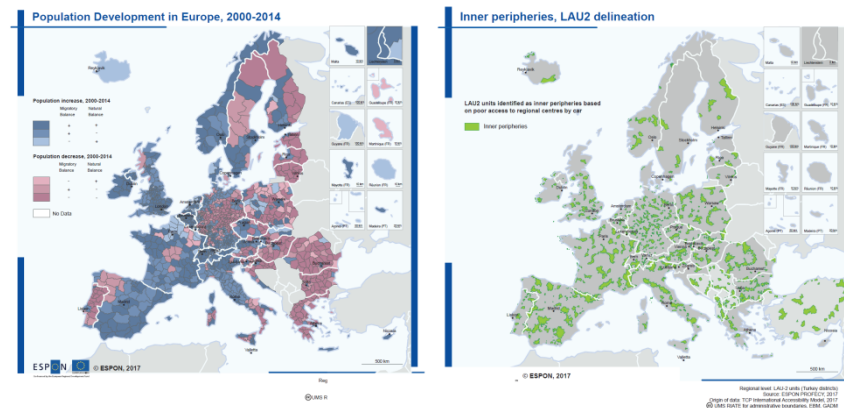
What do we want to achieve with the **ESPON Database Portal?**



Vision > data used by ESPON projects & EGTC, and by external users

Relevant and accessible data

- Essential data > Core indicators (~40) and Project key indicators (~150)



- Non redundancy > check incoming data against data currently in the database, grouped indicators
- Quality > complete, error free, up-to-date (Core data)
- Traceability > content and genealogies described for better interpretation and reuse of data
- Direct access > one or two entry points max, quick results, data directly readable by popular software

Vision > an evolutive system

Flexibility and openness



- Modularity > database, tools, interface decoupled
- Versatility > allow for multiple formats – geospatial data, statistical data, documents
- Interoperability > use of standards, delivery as webservices
- Openness > use of open source technologies such as PostgreSQL/PostGIS, Geonetwork, Django, Angular
- Updatability > easy upload of new data, allow for changes in territorial units

2

Some features of the **ESPON** Database Portal



Discoverability > simple lists to filter

ESPON

Co-financed by the European Regional Development Fund

[MAIN DATA](#)
[ZOOM IN DATA](#)
[PROJECT ARCHIVES](#)
[DOCUMENTS](#)
[ABOUT](#)
[DATA UPLOAD](#)
[LOGIN](#)

🔍 ↺
☰

Publication	Project	From (Year)	To (Year)	Territorial nomenclature	Territorial level	
Theme ▾	Area ▾					
<div style="display: flex; justify-content: space-between;"> <div> Core indicators Key indicators Background information </div> <div> <input checked="" type="checkbox"/> key and core indicators only <input type="checkbox"/> core indicators only <input type="checkbox"/> key indicators only <input type="checkbox"/> all indicators </div> </div>						
✓				Dimensions	Years	Territorial
<input type="checkbox"/>	Population, total, by broad age groups, by 5 year age groups				1990-2011	NUTS3
<input type="checkbox"/>	Live births				2000-2010	NUTS3
<input type="checkbox"/>	Life expectancy, by age, gender				2002-2004	NUTS2
<input type="checkbox"/>	Natural change of population				1996-2005	NUTS3
<input type="checkbox"/>	Net migration, total, by age groups (+ statistical adjustment)				1990-2012	NUTS3
<input type="checkbox"/>	Live births				2000-2010	NUTS3
<input type="checkbox"/>	Deaths, total, by 5 year age groups and gender				1990-2012	NUTS3
<input type="checkbox"/>	Life expectancy, by age, gender				2002-2004	NUTS2
<input type="checkbox"/>	Natural change of population				1996-2005	NUTS3
<input type="checkbox"/>	Net migration, total, by age groups (+ statistical adjustment)				1990-2012	NUTS3
<input type="checkbox"/>	Gross domestic product (GDP) at current market prices by Million euro, Million PPS (purchasing power standard), Purchasing Power Standard per inhabitant				1999-2008	NUTS3
<input type="checkbox"/>	Gross value added at basic prices, million EURO				2005	NUTS3
<input type="checkbox"/>	Disposable income of households				1996-2007	NUTS2
<input type="checkbox"/>	Economically active population by sex, age (1 000)				1999-2010	NUTS2
<input type="checkbox"/>	Employment by sex, broad age groups (1 000)				2005-2013	NUTS2
<input type="checkbox"/>	Employment rates by sex, broad age groups (%)				2000-2009	NUTS2
<input type="checkbox"/>	Employment by age, economic activity (NACE Rev. 2) - 1 000				2005-2010	NUTS2
<input type="checkbox"/>	Unemployment by sex, age (1 000)				1999-2015	NUTS2

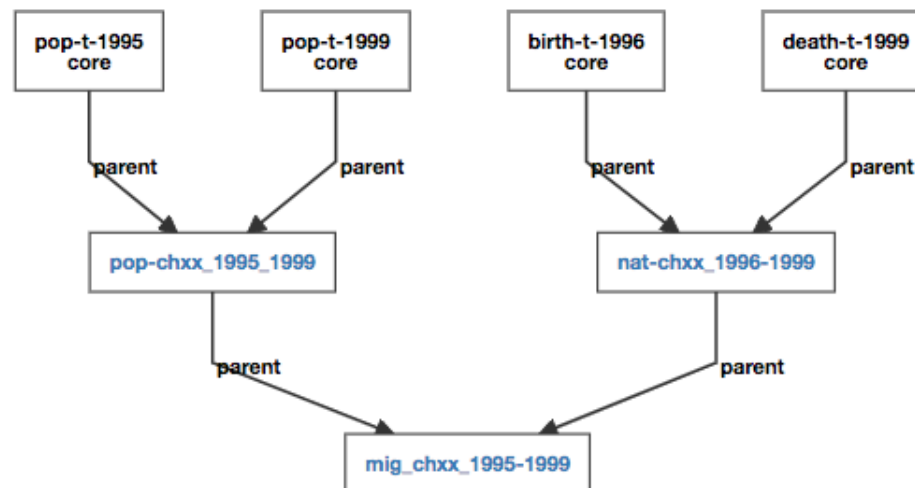
Methodology explained > genealogies

The genealogy of projects key indicators is described

- Textual description

“Migratory population change : difference between total population change and natural population change”

- Visual display



Easy data access > direct download

Download data in various formats

- Tabular
 - Excel
 - JSON
 - CSV
 - ...
- Geospatial
 - Shapefile
 - GeoJSON
 - ...

✓	Core indicator name	Dimensions	Years	Territorial	↓	⬇	📊	☰
<input type="checkbox"/>	Population, total, by broad age groups, by 5 year age groups and gender		1990-2011	NUTS3	↓	⬇	📊	☰
<input type="checkbox"/>	Live births		2000-2010	NUTS3	↓	⬇	📊	☰
<input type="checkbox"/>	Life expectancy, by age, gender		2002-2004	NUTS2	↓	⬇	📊	☰
<input type="checkbox"/>	Natural change of population		1996-2005	NUTS3	↓	⬇	📊	☰
<input type="checkbox"/>	Net migration, total, by age groups (+ statistical adjustment)		1990-2012	NUTS3	↓	⬇	📊	☰

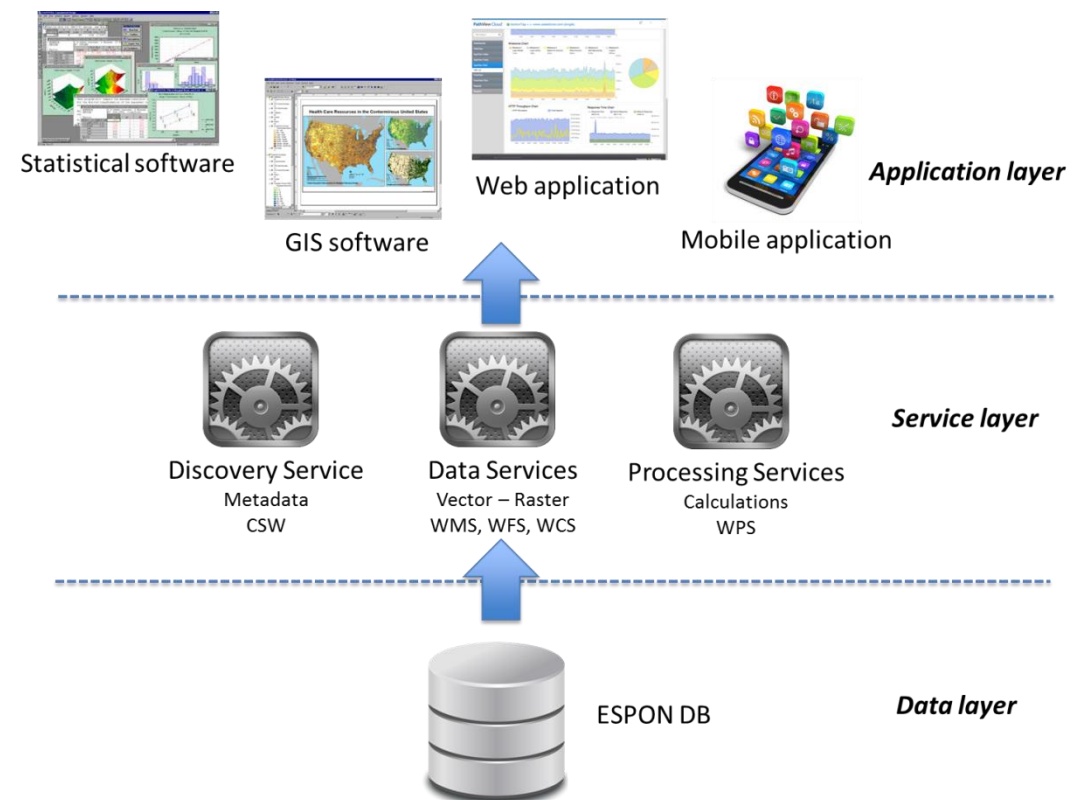
Select download format ▼



Easy data acces > Web services

Interoperability through Web services

- Data discovery > Metadata => CSW
- Data visualization > Quick-looks => WMS
- Data access
 - Standard formats => WFS
 - “ESPON DB” Web services
 - Feed the User Interface
 - Feed ESPON tools (e.g. TIA)
 - General public
- Data update (for admin)
 - link with Eurostat services
 - data modification (update of Core Indicators)



Interactions with **ESPON** projects

Data delivery as an interactive process

- Mutual understanding of project outputs and database concepts
- Building trust on the data
- Value the originality of ESPON knowledge

// Thank you

Marjan van Herwijnen, ESPON EGTC

Hy Dao, Denisa Rodila, University of Geneva