

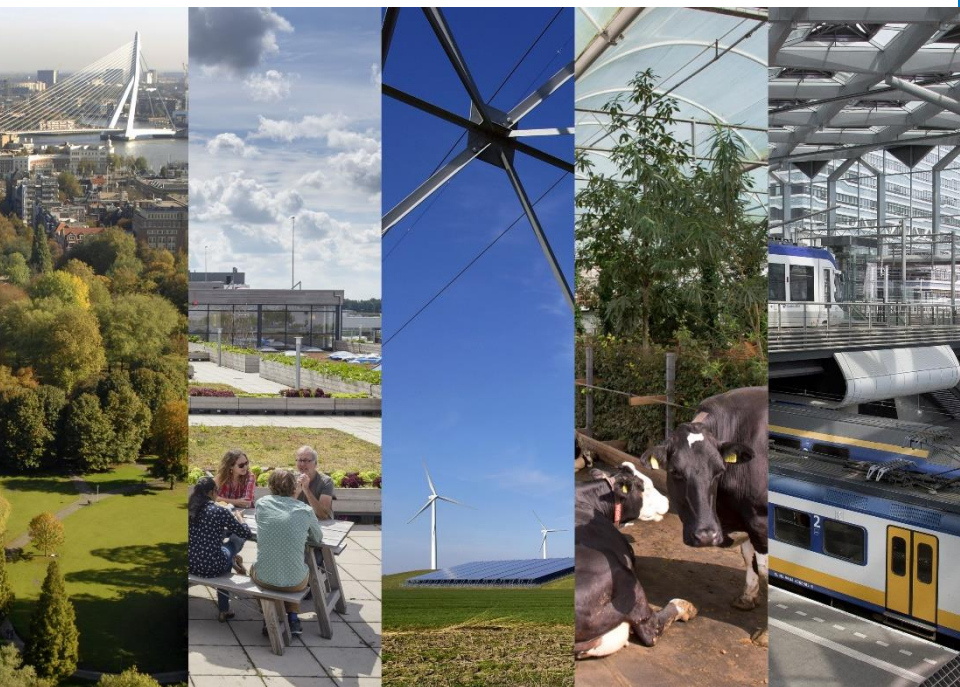


# National Strategy on Spatial Planning and the Environment

*Work in progress*

Emiel Reiding  
Director NOVI

Espon / 17 april 2019







# Why NOVI ?



Opgaven

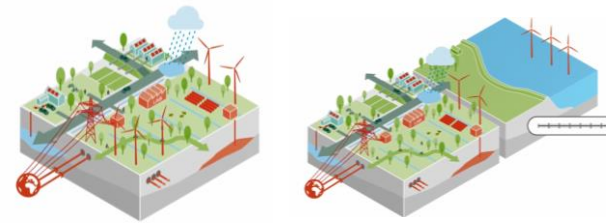


## Claims

- Land use
- Norms: environment, noise, health, safety



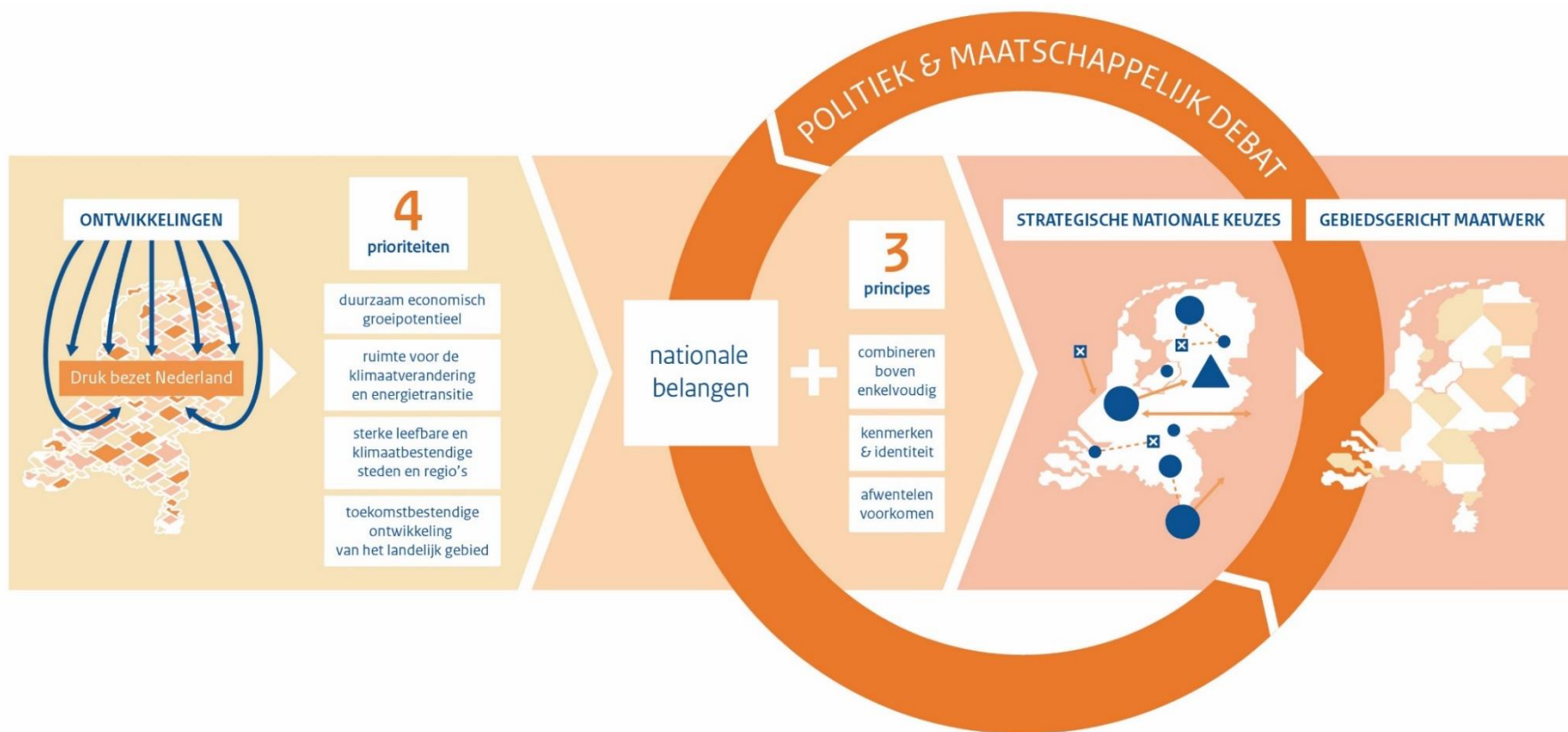
**Combining** where possible  
**Choices** where needed



## Added value NOVI

- Growing need for integrated approach to reach goals

# Decision making





## I A sustainable and competitive economy

### Spatial challenges

- Maintaining a strong, international competitive, and sustainable economy
- Transition of harbours and industrial areas
- Circular economy
- Strengthen the business climate
- Automatization and digitalization
- International infrastructure and mobility



## Example: use of land and sea





## 2 A carbon neutral and climate resilient society

### Spatial challenges

- Sustainable and carbon neutral built environment
- Sustainable infrastructure for heat exchange and geothermics
- Room for the generation of renewable energy such as from the sun and wind
- CCS (storage) and CCU (use)
- Mobility





## Example: harbour and industry



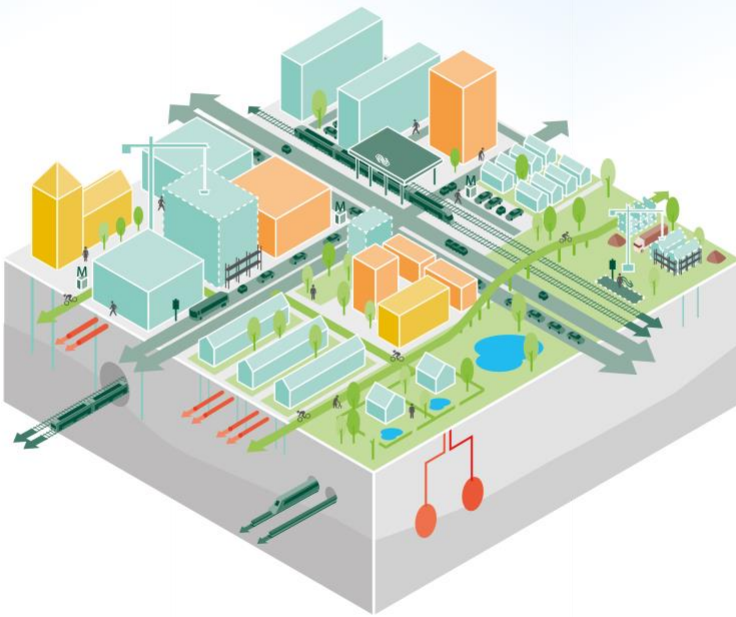




### 3 Sustainable and accessible working and living environment

#### Spatial challenges

- Smart mobility
- Health and safety
- Mobility and transport
- Climate adaptation (green and blue)
- Sustainable built environment
- A high quality of living and for business





## Example: more dense cities





## 4 A sustainable and valuable rural environment

### Spatial challenges

- Sustainable and vital agriculture
- Protection and sustainable use of cultural heritage
- Protection and sustainable use of nature and open spaces
- Increasing biodiversity
- High quality of water, air and soil
- Healthy use of natural resources
- Accessibility of rural areas





## Example: circular farming



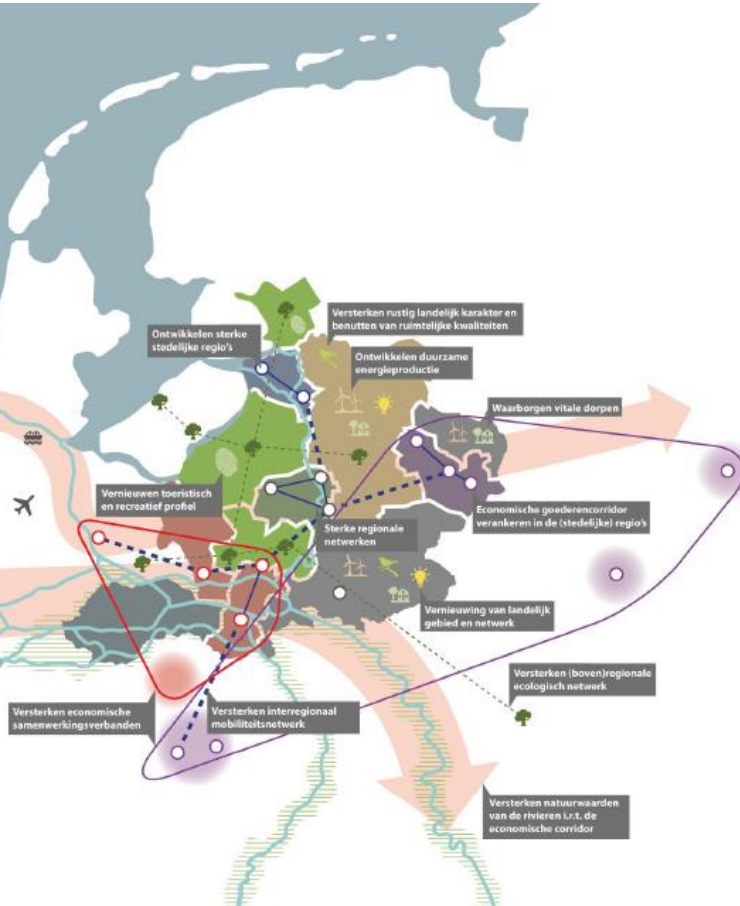


# The NOVI: a continuous dialogue





Bovenregionale kansen  
Kaart



## Process & Implementation

- Draft june; final end 2019/start 2020
  - “Areas with perspective”
  - Administrative agreement
    - Regional Agenda